

SCALE AND ELEVATION DATUM BASED ON LIMITED GROUND CONTROL
 RESULTING IN GOOD RELATIVE, BUT UNCERTAIN ABSOLUTE MAP ACCURACY
 DOWNWARD FROM AERIAL PHOTOGRAPHY AT AN APPROPRIATE SCALE
 OF 1 INCH EQUALS 2640 FEET FLOWN IN 1968

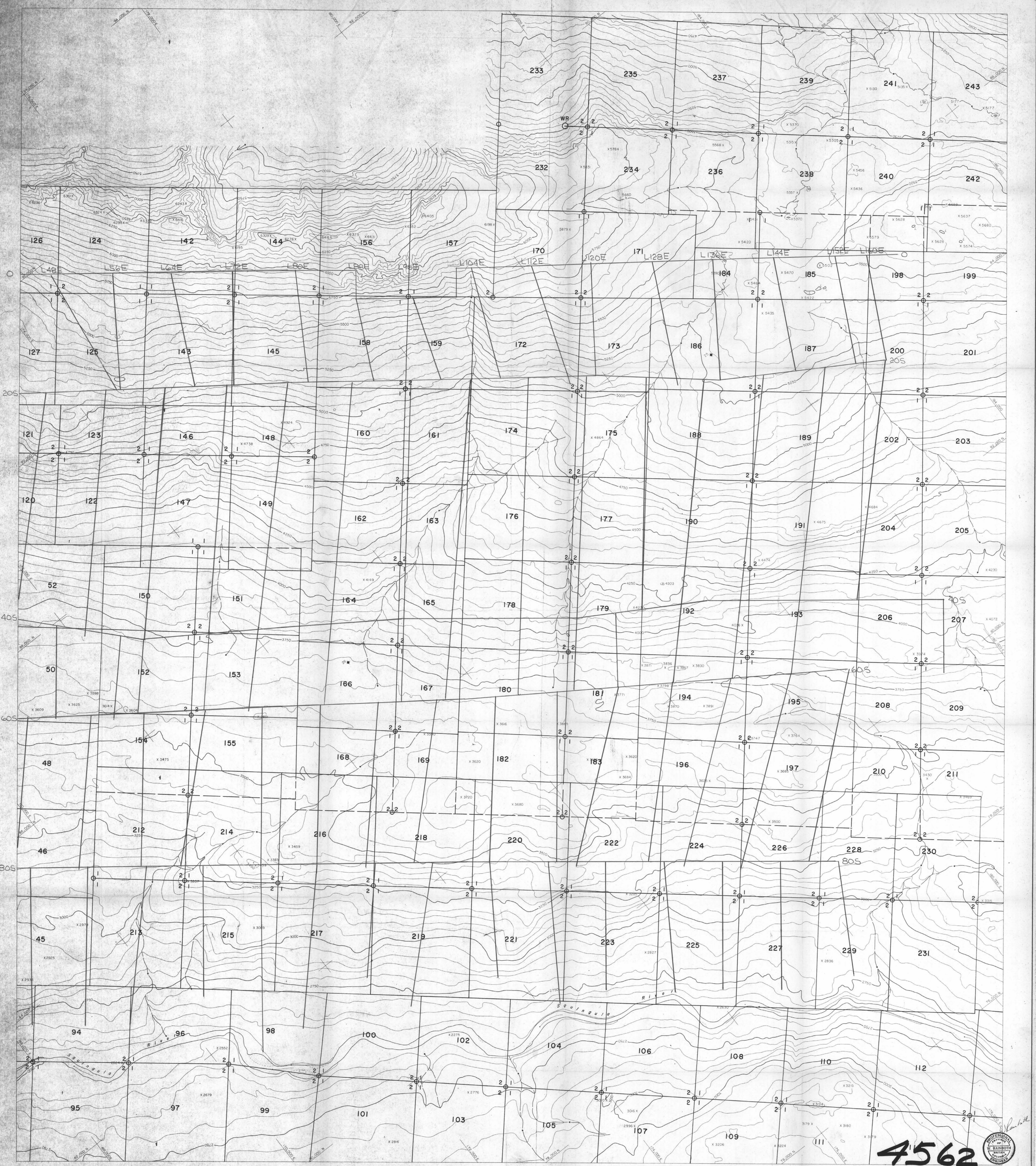
TO ACCOMPANY A GEOCHEMICAL-GEOPHYSICAL REPORT
 BY G. BRACE & W. RAINBOTH, P.E.G. - SEPT. 10, 1972

TOPOGRAPHIC MAP

4562

M3

CANADIAN SUPERIOR EXPLORATION LIMITED
 of
 M3
 ACCESS REPORT
 No. 1 RED GROUP
 PRELIMINARY RECONNAISSANCE TYPE MAPPING
 No. 4562 M.S. #3
 Compiled by
 MELHANEY SURVEYING & ENGINEERING LTD.
 Vancouver, B.C.
 1000 West Pender St.
 SCALE 1" = 400' CONTOUR INTERVAL 50' DATE MARCH, 1973 05911-0 SHEET NO. 1 OF 2



4562



SCALE AND ELEVATION DATUM BASED ON LIMITED GROUND CONTROL. RESULTS IN 5000 RELATIVE BUT UNCERTAIN ABSOLUTE MAP ACCURACY. COMPILED FROM AERIAL PHOTOGRAPHY AT AN APPROXIMATE SCALE OF 1 INCH EQUALS 24 400 FEET FLOWN IN 1963.

TO ACCOMPANY A GEOCHEMICAL-GEOPHYSICAL REPORT BY G. BRACE & W. BARNHART, P. ENG. - SEPT. 10, 1975

		CANADIAN NATIONAL EXPLORATION LIMITED	
		AREA No. 2 RED GROUP	
Department of Mines and Petroleum Resources ASSESSMENT REPORT		PRELIMINARY RECONNAISSANCE TYPE MAPPING	
TOPOGRAPHIC MAP #4562 MAP #4		Compiled by MELHANNEY SURVEYING & ENGINEERING LTD. West Beaver St.	
SCALE 1:50,000	DATE MARCH, 1973	JOB NO. 05911-0	SHEET NO. 2 OF 2