

4688

GEOCHEMICAL REPORT

ON A PART OF THE
CYPRESS CLAIM GROUP

To October 29, 1973

Situated near

HECATE BAY

seven air miles north of Tofino
Alberni Mining Division, British Columbia

Latitude 49°16'N; Longitude 125°56'W
N.T.S. 92F/5

Based on Field Work between October 18, 1973 and October 25, 1973.

Vancouver, B.C.
November 5, 1973.

J. DeLeen, MA Sc., P.Eng.
P.T. McCulloch, B.Sc., M.S.

Department of	
Mines and Technical Resources	
ASSESSMENT REPORT	
NO. 4688	M.P.

TABLE OF CONTENTS

	Page
SUMMARY	1
CONCLUSIONS	1
LOCATION, ACCESS, AND TOPOGRAPHY	2
CLAIM OWNERSHIP	2
GEOCHEMISTRY	5
METHOD OF ASSAY	5
RESULTS	6
EXPENSES	7

LIST OF FIGURES

- Figure 1 #1 Location Map
Figure 2 #2 Cypress Claim Map

LIST OF PLATES

- Plate 1 #3 Geology
Plate 2 #4 $\frac{\text{Cu}}{\text{Mo}}$ Geochemistry and Rock Sample Locations

GEOCHEMICAL REPORT ON A PART OF THE CYPRESS CLAIM GROUP

SUMMARY

Between October 18, 1973 and October 25, 1973 a three-man field crew employed and in part subcontracted by Texada Mines Ltd. completed 18,000 feet of line cutting and collected 150 soil and silt samples.

The work was conducted on mining claims Cypress 7 - 9.

This report describes the copper and molybdenum geochemistry of the group and discusses the results. A geochemical map is included at the end of this report.

CONCLUSIONS

As a result of this survey the area of anomalous copper in the soils is extended to the south.

No significant molybdenum values were found in the soil on the Cypress claim group.

LOCATION, ACCESS, AND TOPOGRAPHY

The Cypress claim group is located in the Alberni Mining Division between Hecate Bay and Cypre River, seven miles north of Tofino, B.C. The claims are on map 92F/5 West Half (N.T.S.) and are centered about Latitude 49°16'N and Longitude 125°56'W (Figure 1).

The topography varies from rolling hills in the east to the steep slopes of the Catface Range in the west. The elevation varies from 0 to 2,000 feet.

The claim group is accessible by boat or float plane from Tofino and is traversed by a logging road. Logging is still active on and adjacent to the claim group.

CLAIM OWNERSHIP

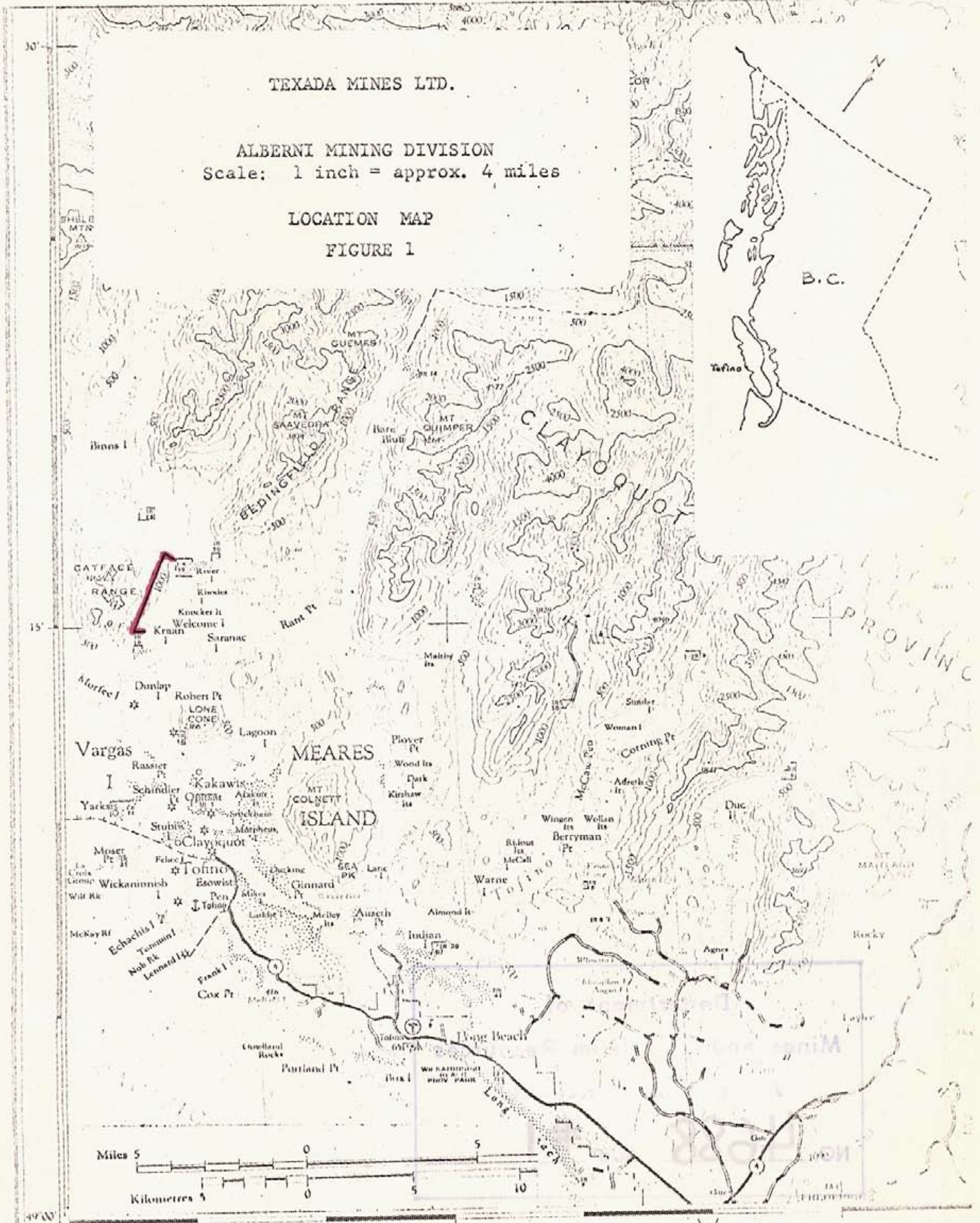
The Cypress group is optioned by Texada Mines Ltd. and consists of 28 claims as follows (Figure 2):

<u>Name of Claim</u>	<u>Record No.</u>	<u>No. of Claims</u>
Cypress No. 1 to 2 inclusive	5061- 5062	2
Cypress No. 3 to 10 inclusive	6162- 6169	8
Cypress No. 12	7810	1
Cypress No. 13 to 15 inclusive	10226-10228	3
Top No. 1 to 8 inclusive	16638-16645	8
Top No. 9 to 12 inclusive	19297-19300	4
Top No. 13 to 14 inclusive	19330-19331	<u>2</u>
		28 claims

TEXADA MINES LTD.

ALBERNI MINING DIVISION
Scale: 1 inch = approx. 4 miles

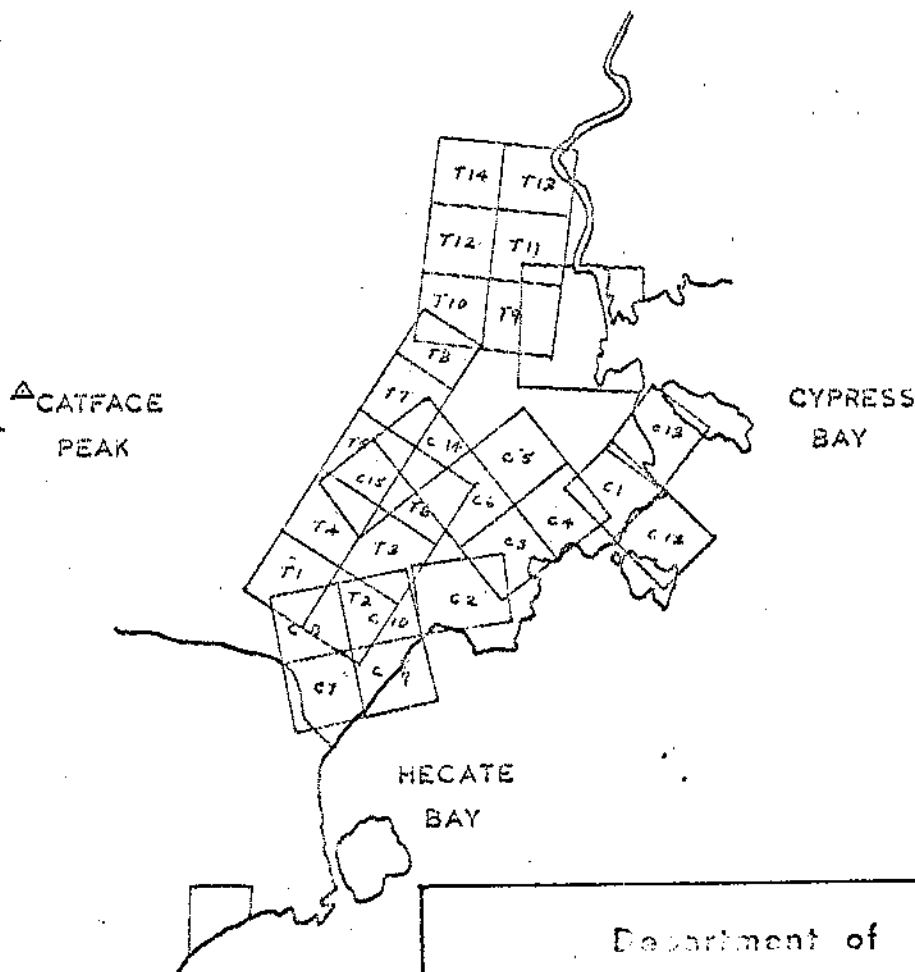
LOCATION MAP
FIGURE 1



4688-M-1

LEGEND

C - Cypress
T - Top



Department of
 Mines and Technical Resources
 ANNUAL REPORT
 NO. **4688** MAP **#2**

FIGURE 2

CC 5490 (12/79)

GEOCHEMISTRY

Introduction

The Catface intrusion is exposed in the southwest part of the area. Bedrock is at or near the surface over all but the southeast part of the area. Previous soil and silt geochemical sampling has indicated that this area may be enriched in copper. Therefore geochemistry was expected to be a useful tool in locating areas of anomalous copper and/or molybdenum. To this end soil samples were taken on grid lines approximately 230 feet apart, with samples taken every 100 feet, resulting in a total of 150 soil and silt samples.

Overburden on the steep hillsides consists of a thin layer of glacial till under a dense mat of moss and/or roots. In some areas moss covers talus and no samples were obtained. Most of the area was logged some years ago. The result is a dense jungle of new trees, underbrush, and old logging slash which further complicates sample gathering. Sampling was restricted to sites where the soil is relatively undisturbed.

Soil samples were restricted to the yellow brown to brown "B" soil horizon where possible. In some cases a mixture of "B" and "C" was obtained. Soil samples were taken with a mattock and/or auger, whichever was more convenient. The depth of sampling ranged from 0.3 feet to 2.5 feet. "Silt" samples were mainly sandy silts. The samples were bagged and sent to Vancouver Geochemical Laboratories Ltd. in Vancouver for analysis.

METHOD OF ASSAY

The samples were dried and sieved; the -80 mesh fraction was dissolved by hot HClO_4 and HNO_3 digestion and the resulting solution analyzed by atomic absorption.

RESULTS

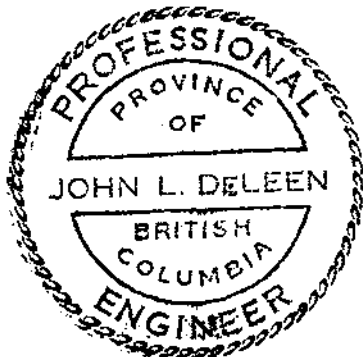
Statistical techniques cannot be used on the Cypress property to define anomalous samples because the samples are not randomly distributed, but are concentrated along a geologically favorable area, and around a known geochemically favorable zone. As a result there is a high mean copper content in the soils and a large variance among samples. For this reason arbitrary values of 100 ppm and 200 ppm copper were used as lower limits of anomalous and very anomalous respectively. This corresponds to the lower limits used in an earlier report in April, 1973.

In proposing the geochemical program on the Cypress claim group it was hoped that copper (and molybdenum) would increase in and near the intrusion which outcrops in the southwest corner of the grid.

As a result of this program the area of anomalous copper geochemistry was extended south and east from the claim post at the western margin of the Cypress claim group. The anomalous zone is broad and extends downslope from the area previously outlined. Local, very anomalous zones are present, however these are small and also extend downslope.

No areas of significant molybdenum analyses were found.

Vancouver, B.C.
November 5, 1973



John DeLeen
J. DeLeen, MA Sc., P.Eng.
P.T. McCullough, B.Sc., M.S.

P. McCullough

EXPENSES

Line Cutting and Geochemical Sampling

Manex Mining Limited:

2 men for 8 days)	
Truck Rental)	
Power Saw Rental)	\$1,123.57

Texada Mines Limited:

Wages:	
P.T. McCullough, \$52.00/day x 11 da.	572.00
Meals	31.75
Room	23.10
Ferry	8.00
Axe files	4.82
Plane Charter	72.00
Room and Board (18 man days)	270.00
Geochemical Analysis	<u>247.50</u>

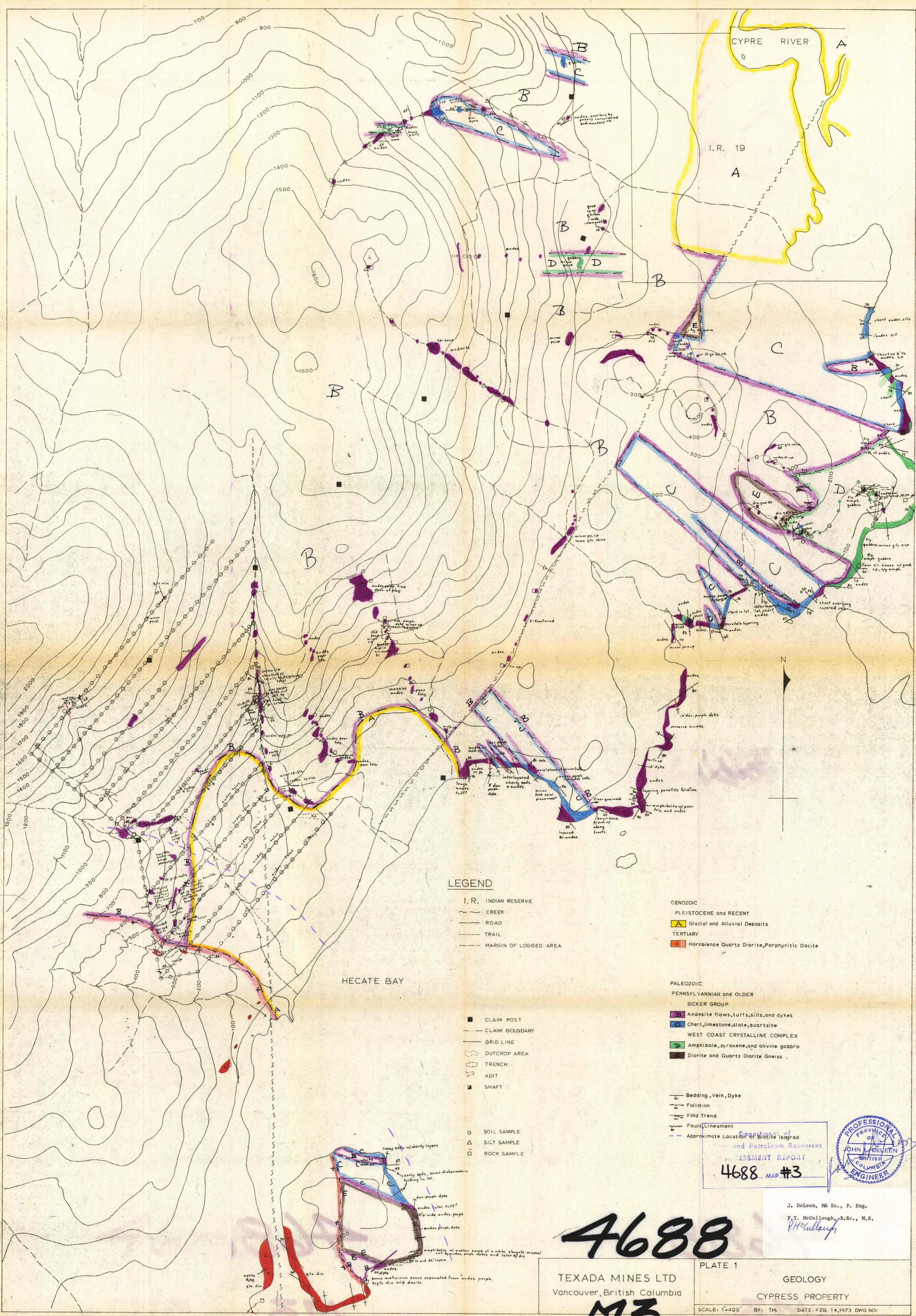
TOTAL \$2,352.74

Declared before me at the *City*
of *Vancouver*, in the
Province of British Columbia, this *7th*
day of *November*, 19*72*, A.D.

P. McCullough

J. G. G. G.
A Commissioner for taking Affidavits within British Columbia or
A Notary Public in and for the Province of British Columbia.

SUB-MINING RECORDER



LEGEND

I. R. INDIAN RESERVE

CREEK

ROAD

TRAIL

MARGIN OF LOGGED AREA

CLAIM POST

CLAIM BOUNDARY

GRID LINE

OUTCROP AREA

TRENCH

ADIT

SHAFT

SOIL SAMPLE

SILT SAMPLE

ROCK SAMPLE

CENOZOIC

PLEISTOCENE and RECENT

Glacial and Alluvial Deposits

TERTIARY

Hornblende Quartz Diorite, Porphyritic Dacite

PALEOZOIC

PENNSYLVANIAN and OLDER

SICKER GROUP

Andesite flows, tuffs, sills, and dykes

Chert, limestone, slate, quartzite

WEST COAST CRYSTALLINE COMPLEX

Amphibole, pyroxene, and olivine gabbro

Diorite and Quartz Diorite Gneiss

Bedding, Vein, Dyke

Foliation

Fold Trend

Fault, Lineament

Approximate Location of Biotite Isograd

Department of Energy and Petroleum Resources

ASSESSMENT REPORT

4688 MAP #3



J. DeLeen, MA Sc., P. Eng.

P. T. McCullough, B.Sc., M.S.

PH McCullough

4688

TEXADA MINES LTD
Vancouver, British Columbia

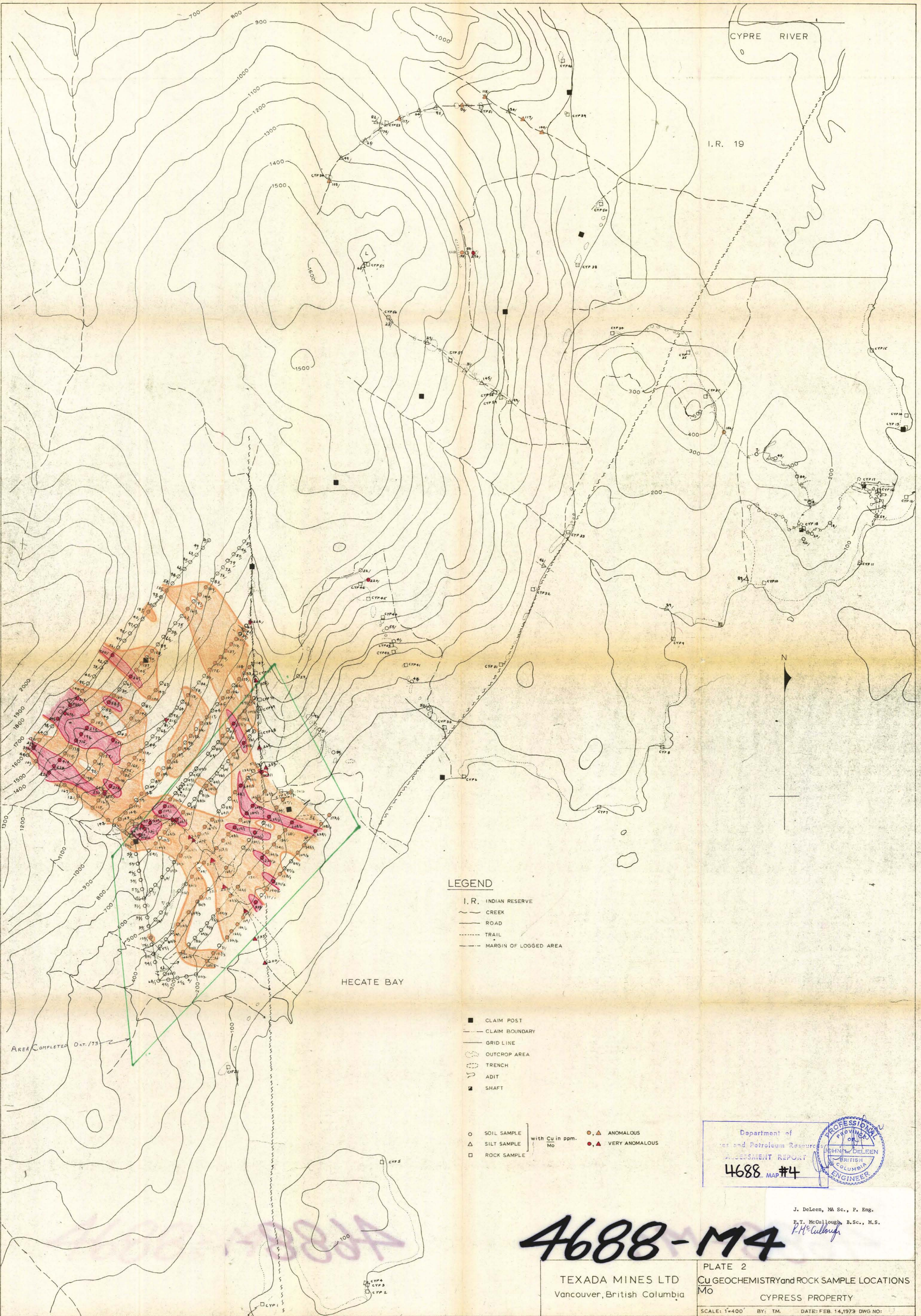
M3

PLATE 1

GEOLOGY

CYPRESS PROPERTY

SCALE: 1"=400' BY: TM. DATE: FEB. 14, 1973 DWG NO:



CYPRESS RIVER
I.R. 19

LEGEND

- I.R. INDIAN RESERVE
- CREEK
- ROAD
- - - TRAIL
- - - MARGIN OF LOGGED AREA

- CLAIM POST
- - - CLAIM BOUNDARY
- GRID LINE
- OUTCROP AREA
- TRENCH
- ADIT
- SHAFT

- SOIL SAMPLE
 - △ SILT SAMPLE
 - ROCK SAMPLE
- with Cu in ppm. Mo
- , △ ANOMALOUS
 - , ▲ VERY ANOMALOUS

Department of
Energy and Petroleum Resources
ASSESSMENT REPORT
4688 MAP #4



J. DeLeen, MA Sc., P. Eng.
P.T. McCullough, B.Sc., M.S.
P.H. McCullough

4688-M4

TEXADA MINES LTD
Vancouver, British Columbia

PLATE 2
Cu GEOCHEMISTRY and ROCK SAMPLE LOCATIONS
MO
CYPRESS PROPERTY

SCALE: 1"=400' BY: TM. DATE: FEB. 14, 1973 DWG NO: