

4703

SOIL GEOCHEMICAL REPORT
TRI GROUP OF MINERAL CLAIMS

CANEX PLACER LIMITED
ENDAKO MINES DIVISION

OMINECA MINING DIVISION

ENDAKO, B.C.

(Latitude 54°15', Longitude 125°00')

Field Work undertaken from 18 June to 21 June, 1973.

J. Cyr

Department of	
Mineral and Geoscience Resources	
Report No. 4703	
NO	MSP

November 13, 1973

TABLE OF CONTENTS

	<u>Page</u>
Introduction	1
Summary	1
Mineral Claim Group	1
Topography and Access	1
General Geology	2
Survey Control	2
<u>Soil Geochemical Survey</u>	2
Introduction	2
Sampling	2
Assay Method	3
Results	3
Statement of Expenses	3-4
Conclusion	4
 <u>Appendices</u>	
I Certification	6
II Statement of Qualification	7
#1 III Mineral Claim Map 1" = 1/4 mile	
#2 IV Soil Geochemical Survey: Molybdenum 1" = 1/4 mile	
#3 V Soil Geochemical Survey: Lead 1" = 1/4 mile	
#4 VI Soil Geochemical Survey: Zinc 1" = 1/4 mile	
#5 VII Soil Geochemical Survey: Copper 1" = 1/4 mile	
#6 VIII Soil Geochemical Survey: Silver 1" = 1/4 mile	
IX Declaration for Statement of Expenses	
#7 Location map	

INTRODUCTION

Soil geochemical survey was conducted over Tri Group of Mineral Claims from 18 June to 21 June, 1973. The work was undertaken for assessment purposes on mineral claims which are owned by Canex Placer Limited, Endako Mines Division. The property is located at Hanson Lake approximately eleven miles due north of Endako Village.

SUMMARY

A total of 399 samples were collected at 200-foot-intervals along ten north-south lines. Samples were assayed for Mo, Cu, Pb, Zn and Ag content. Coincident higher values in Mo, Pb and Ag form an anomaly in southern third of the mineral claim block. Scattered higher values of Mo, Cu, Pb, Zn and Ag occur over the northern two-thirds of the mineral claim block.

MINERAL CLAIM GROUP

The Tri Group of Mineral Claims is located at Hanson Lake, approximately eleven miles due north of Endako Village in the Omineca Mining Division. The property is geographically located in the southeast quadrant of quadrilateral Latitude 54° and Longitude 125°.

The thirty-seven mineral claims were staked from 18 June to 21 June, 1973, and were recorded as Tri 1-37 inclusive Mineral Claims, record numbers 125966 - 126002 inclusive on 25 June, 1973. They are grouped as the Tri Group. An appended map (Appendix III) shows spatial location of mineral claims on 1" = ¼ mile scale.

TOPOGRAPHY AND ACCESS

Hanson Lake is situated in the elongated easterly-trending Shovel Creek valley. Glaciation has had a pronounced effect on development of valley which characteristically has steep-sided walls and relatively broad flat bottom. Relief is about 1,000 to 1,500 feet. Mineral claim block is located on north-facing slope of Hanson Lake. Most southerly claims are situated close to crest of hill south of Hanson Lake.

An eleven-mile access road was constructed to Hanson Lake from Duncan Creek partially during autumn 1971 and completed in July 1972. Until road completion, Hanson Lake was accessible only by float plane or helicopter. The Tri Group of Mineral Claims, being situated on south side of Hanson Lake is still only accessible by air support or by boat from road terminus.



4703 M7

GENERAL GEOLOGY

Numerous rock exposures were observed on mineral claim area and consist of gray to pink quartz monzonite of the Topley Intrusions. Rock is generally coarse equigranular to subporphyritic and is probably correlative with Glenannan Quartz Monzonite unit (Lode Metals in British Columbia, 1965, pp 114-135). Rhyolitic and basaltic dykes are intrusive into quartz monzonite on claim block area. Traces of molybdenite and chalcopyrite have been observed on mineral claims.

SURVEY CONTROL

Aerial photographs on 1" = ½ mile scale were utilized for ground location control. Sample lines were established by chain and compass. An east-west line was established as a baseline through center of claim group and ten widely-spaced sample lines were produced northward and southward from this line.

SOIL GEOCHEMICAL SURVEY

Introduction

Soil geochemical samples were collected at 200-foot intervals from ten southerly-trending lines spaced from 750 feet to 1,500 feet apart.

Soil development was poorly to well developed over the mineral claim group. Glacial till with varying depths of dark wet humic clay, colluvium and lithosols are abundant in the southern third of the mineral claim group.

Vegetation over north-facing slope is variable with balsam, spruce and minor jackpine prevailing over eastern third of claim area. Water table across this heavily-forested slope is locally very shallow and these conditions are characteristically reflected with dense growths of devils club, willow and alder. Thick second-growth jack pine predominates over a burn area across western two-thirds of claim group.

Sampling

Majority of soil samples were obtainable from small four-to six-inch deep holes; occasionally deeper depths were required where humus layer was thick. Samples were collected wherever possible from B-horizon. Where soil development was poor, samples were frequently collected from composites of A-, B- or C-horizons. Occasionally organic-rich material was sampled when humus depth was excessive. Teflon spoons were utilized to scoop about 150 grams of material into heavy kraft paper envelopes. Samples were generally dried under room temperature conditions prior to shipment to laboratory.

Assay Method

All soil samples were assayed for Mo, Cu, Pb, Zn and Ag at Placer Development Geochemistry Laboratory, Vancouver, B.C.

The processing and analytical method of soil geochemical samples at Placer Geochemistry Laboratory are as follows. Samples are dried in a hot air-dryer, then sifted in -80 mesh nylon sieves. Portions of -80 mesh fractions are weighed with precision torsion balance. Samples are digested in a mixture of hot perchloric and nitric acid, and then prepared for analysis by atomic absorption spectrophotometry. A Perkin-Elmer 403 instrument is used for analysis of molybdenum, copper, lead and zinc. Other portion of sample is digested in boiling nitric acid, then water and 20% T.O.T.P. dissolved in heptane are added. The solution is shaken and centrifuged prior to analyzing for silver by atomic absorption.

Results

Soil geochemical survey has indicated an extensive molybdenum anomaly with lessor coincident Pb and Ag anomalies on southern third of mineral claim group. Spotty high Cu values occur randomly over the claim group. Zn content is low with the exception of a few assays which are appreciably higher than background along the southern boundary of the claim group. Mo forms the predominant anomaly with a number of values significantly higher than average regional background.

Appended soil geochemical maps (Appendicies IV to VIII) show sample locations, metal contents and interpretation of results.

STATEMENT OF EXPENSES

The following expenditures were incurred by Canex Placer Limited, Endako Mines Division for conducting soil geochemical survey over Tri Group of Mineral Claims.

Personnel Costs

<u>Personnel</u>	<u>Period Employed</u>	<u>Time and Rate</u>	<u>Cost</u>
B.W. Bosdet	18 June-21 June	45 hr @ 3.70	\$166.50
P. Buckley	18 June-21 June	47 hr @ 4.15	195.05
J. Cyr	18 June-21 June	48 hr @ 5.90	283.20
R. Lau	18 June-21 June	48 hr @ 4.05	194.40
A.J. Peters	18 June-21 June	47 hr @ 4.80	225.60
C. Scott	18 June-21 June	48 hr @ 3.85	184.80
S.W. Wilson	18 June-21 June	43 hr @ 4.15	178.45
			<hr/>
			\$1,428.00
			\$1,428.00
Add 15% Office Overhead			214.20
			<hr/>
			\$1,642.20

		<u>Cost</u>
Fixed-wing Transportation, Trans-Provincial Airlines, June 18, 1973 Flight No. 28541	\$165.00	
Fixed-wing Transportation, Trans-Provincial Airlines, June 21, 1973 Flight No. 29627	\$175.00	
	<u>\$340.00</u>	340.00
		<u>1,982.20</u>
Geochemical Assaying 399 samples @ \$3.50 Mo, Cu, Pb, Zn and Ag determinations Note: Cost of assaying samples falling outside Mineral Claims not included.	\$1,396.50	<u>1,396.50</u>
		\$3,378.70
<u>Map Compilations</u>		
A. J. Peters 38 hrs @ 4.80		182.40
<u>Camp Operation Costs</u>		
B. W. Bosdet 2 days @ \$10.00/man day	\$ 20.00	
P. Buckley 2 days @ \$10.00/man day	20.00	
J. Cyr 2 days @ \$10.00/man day	20.00	
R. Lau 2 days @ \$10.00/man day	20.00	
A. J. Peters 2 days @ \$10.00/man day	20.00	
C. Scott 2 days @ \$10.00/man day	20.00	
S. W. Wilson 2 days @ \$10.00/man day	20.00	
	<u>140.00</u>	
<u>Total Soil Geochemical Survey Expenditures =</u>		<u>\$3,701.10</u>

CONCLUSION

Soil geochemical survey indicated a coincident Mo-Pb-Ag anomaly on southern third of Tri Group of Mineral Claims and a weak Zn anomaly on southern boundary of Tri Group of Mineral Claims. Traces of molybdenum and copper mineralization were seen on outcrops within the mineral claim group.

Submitted by:



J. Cyr,
Geologist
Canex Placer Limited
Endako Mines Division

JC:jp
App.

APPENDICIES

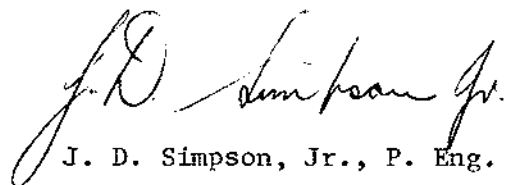
- I Certification
- II Statement of Qualification
- III Mineral Claim Map 1" = $\frac{1}{4}$ mile
- IV Soil Geochemical Survey: Molybdenum 1" = $\frac{1}{2}$ mile
- V Soil Geochemical Survey: Lead 1" = $\frac{1}{4}$ mile
- VI Soil Geochemical Survey: Zinc 1" = $\frac{1}{4}$ mile
- VII Soil Geochemical Survey: Copper 1" = $\frac{1}{2}$ mile
- VIII Soil Geochemical Survey: Silver 1" = $\frac{1}{4}$ mile
- IX Declaration for Statement of Expenses

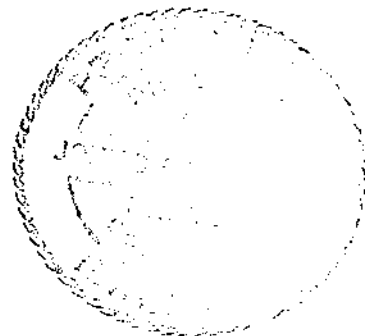
APPENDIX I

CERTIFICATION

I, J. D. Simpson Jr., of Canex Placer Limited, Endako Mines Division, Endako, B.C., do hereby certify that:

1. I am a registered Professional Engineer in the Province of British Columbia.
2. I have carefully reviewed the data and examined the report of J. Cyr on exploration work which was undertaken on 18 June to 21 June, 1973, on Tri Group of Mineral Claims. The mineral claims are owned by Canex Placer Limited, Endako Mines Division, and are located in the Omineca Mining Division near Endako, B.C. (Latitude $54^{\circ}15'$, Longitude 125°).
3. To the best of my knowledge the interpretation of data, conclusions and expenditures which are claimed for the performance of work are valid.


J. D. Simpson, Jr., P. Eng.



APPENDIX II

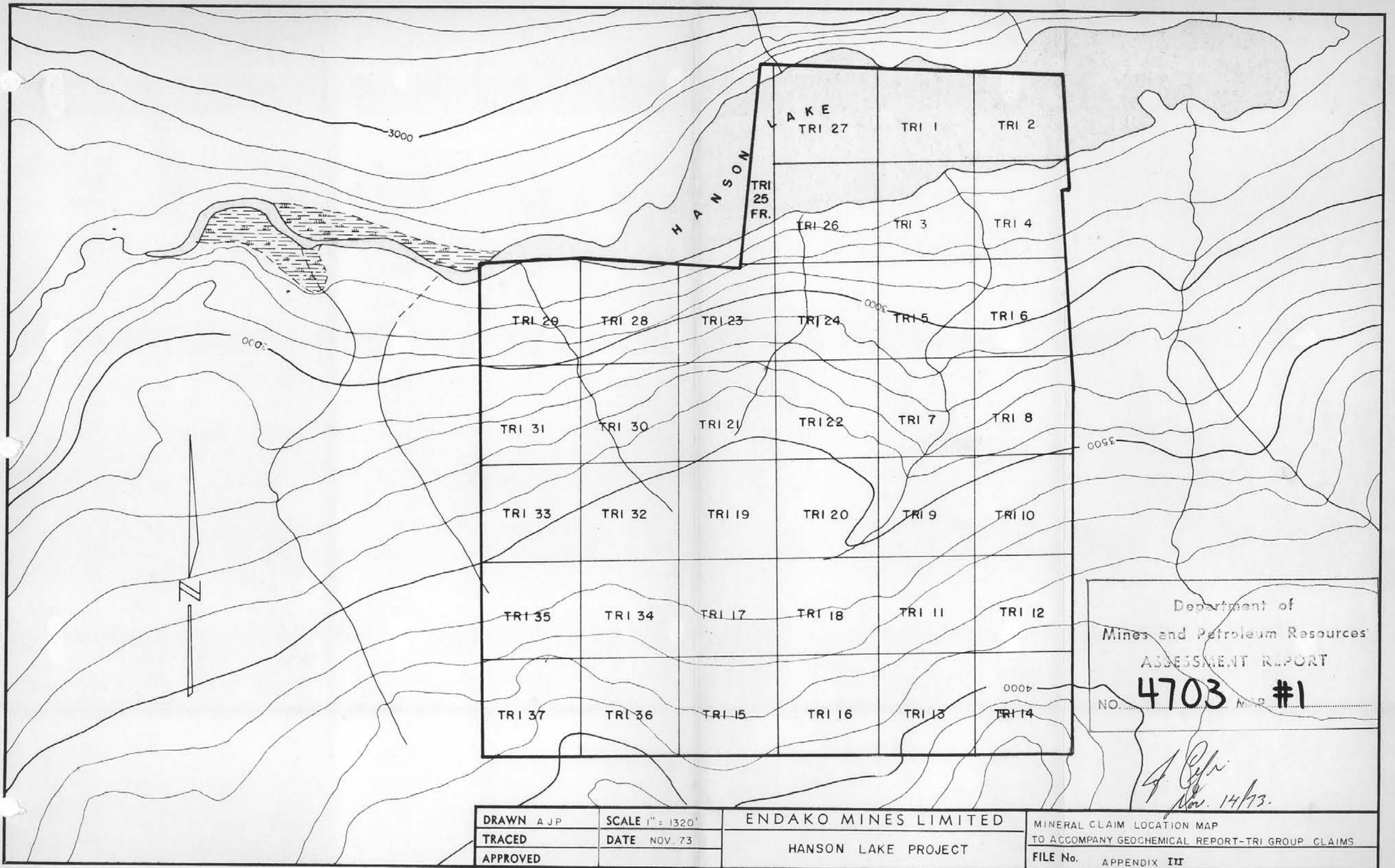
STATEMENT OF QUALIFICATION

I, J. B. Cyr, of Canex Placer Limited, Endako Mines Division, Endako, B.C. do hereby certify that:

1. I am a geologist.
2. I am a graduate of the University of Saskatchewan with a B.Sc. degree in Geology in 1970.
3. From 1970 until the present, I have been engaged in exploration geology in British Columbia. During summer months as an undergraduate I conducted field work in northern Saskatchewan and Northwest Territories.



J. B. Cyr



DRAWN AJP
TRACED
APPROVED

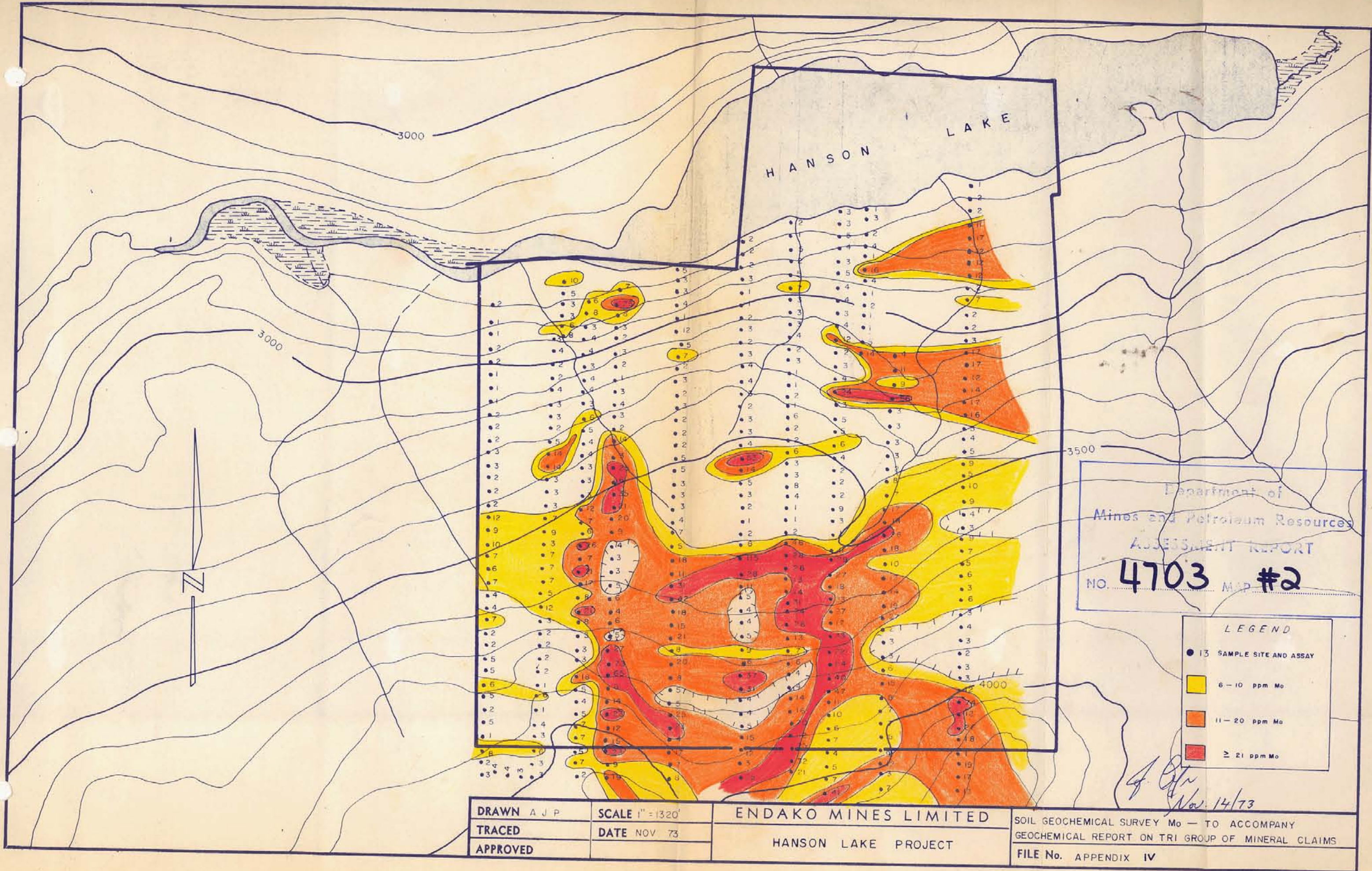
SCALE 1" = 1320'
DATE NOV. 73

ENDAKO MINES LIMITED
HANSON LAKE PROJECT

MINERAL CLAIM LOCATION MAP
TO ACCOMPANY GEOCHEMICAL REPORT-TRI GROUP CLAIMS
FILE No. APPENDIX III

Department of
Mines and Petroleum Resources
ASSESSMENT REPORT
NO. 4703 #1

A. C. [Signature]
Nov. 14/73.



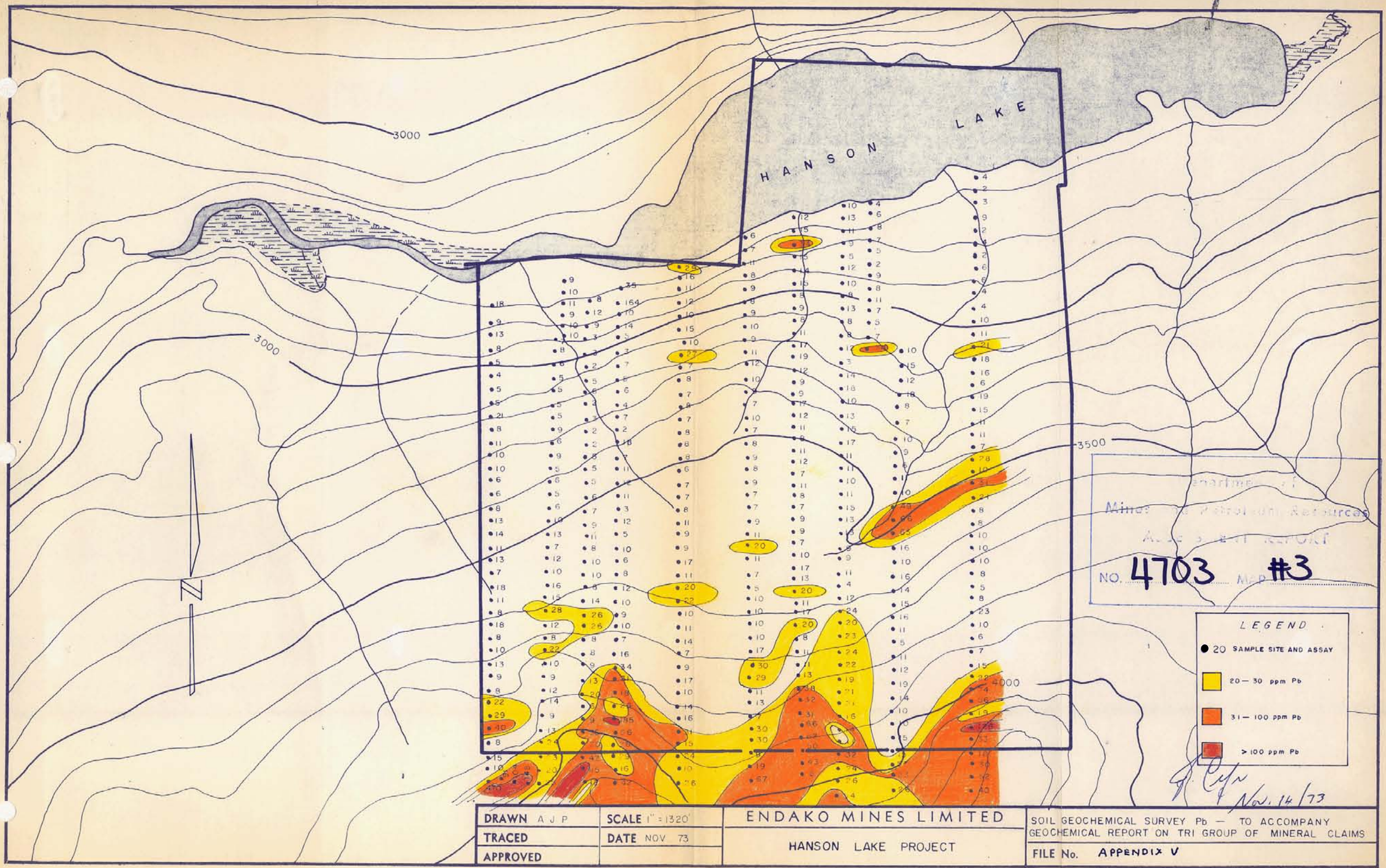
Department of
 Mines and Petroleum Resources
 ASSESSMENT REPORT
 NO. **4703** MAP #2

LEGEND

- 13 SAMPLE SITE AND ASSAY
- 6 - 10 ppm Mo
- 11 - 20 ppm Mo
- ≥ 21 ppm Mo

A. J. P.
 Nov. 14/73

DRAWN A J P	SCALE 1" = 1320'	ENDAKO MINES LIMITED	SOIL GEOCHEMICAL SURVEY Mo - TO ACCOMPANY GEOCHEMICAL REPORT ON TRI GROUP OF MINERAL CLAIMS FILE No. APPENDIX IV
TRACED	DATE NOV 73	HANSON LAKE PROJECT	
APPROVED			



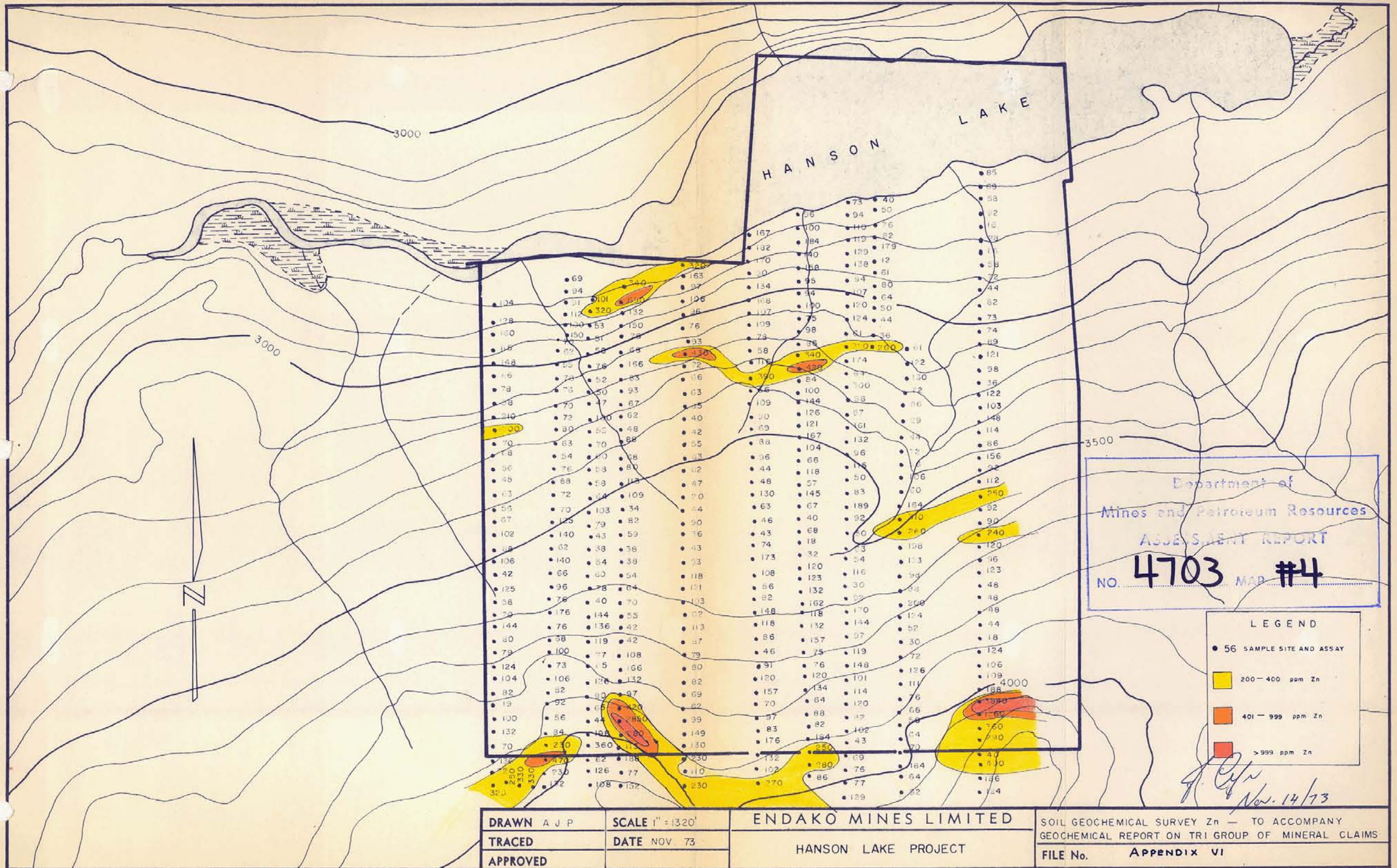
Mineral Resources
 4703 #3

LEGEND

- 20 SAMPLE SITE AND ASSAY
- 20 - 30 ppm Pb
- 31 - 100 ppm Pb
- > 100 ppm Pb

G. Ryan
 Nov. 14/73

DRAWN A J P	SCALE 1" = 1320'	ENDAKO MINES LIMITED	SOIL GEOCHEMICAL SURVEY Pb - TO ACCOMPANY
TRACED	DATE NOV 73	HANSON LAKE PROJECT	GEOCHEMICAL REPORT ON TRI GROUP OF MINERAL CLAIMS
APPROVED			FILE No. APPENDIX V



Department of
 Mines and Petroleum Resources
 ASSESSMENT REPORT
 NO. **4703** MAP **#4**

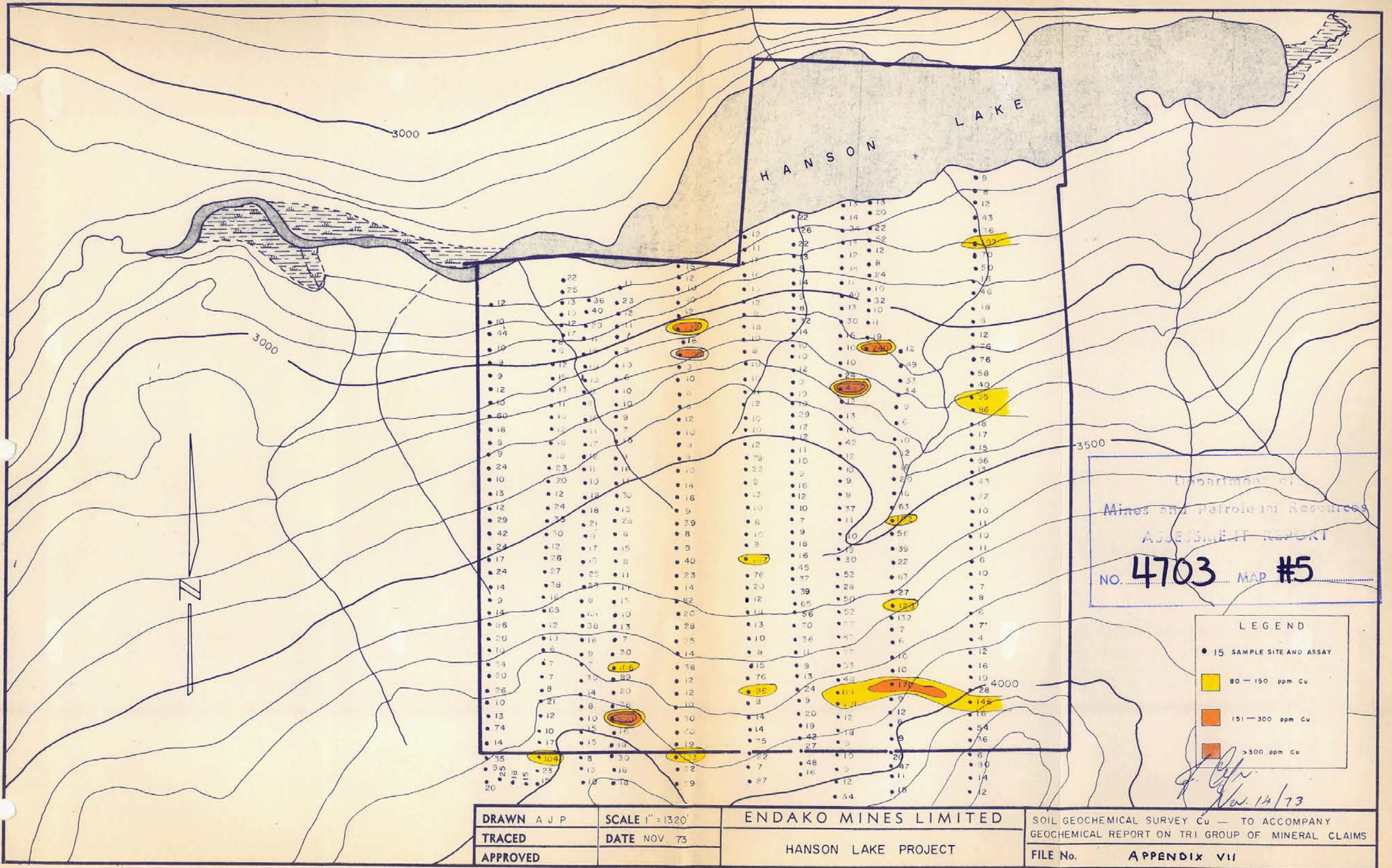
LEGEND

- 56 SAMPLE SITE AND ASSAY
- 200 - 400 ppm Zn
- 401 - 999 ppm Zn
- > 999 ppm Zn

J. C. [Signature]
 Nov. 14/73

DRAWN A J P	SCALE 1" = 1320'	ENDAKO MINES LIMITED
TRACED	DATE NOV 73	
APPROVED		
		HANSON LAKE PROJECT

SOIL GEOCHEMICAL SURVEY Zn - TO ACCOMPANY
 GEOCHEMICAL REPORT ON TRI GROUP OF MINERAL CLAIMS
 FILE No. **APPENDIX VI**



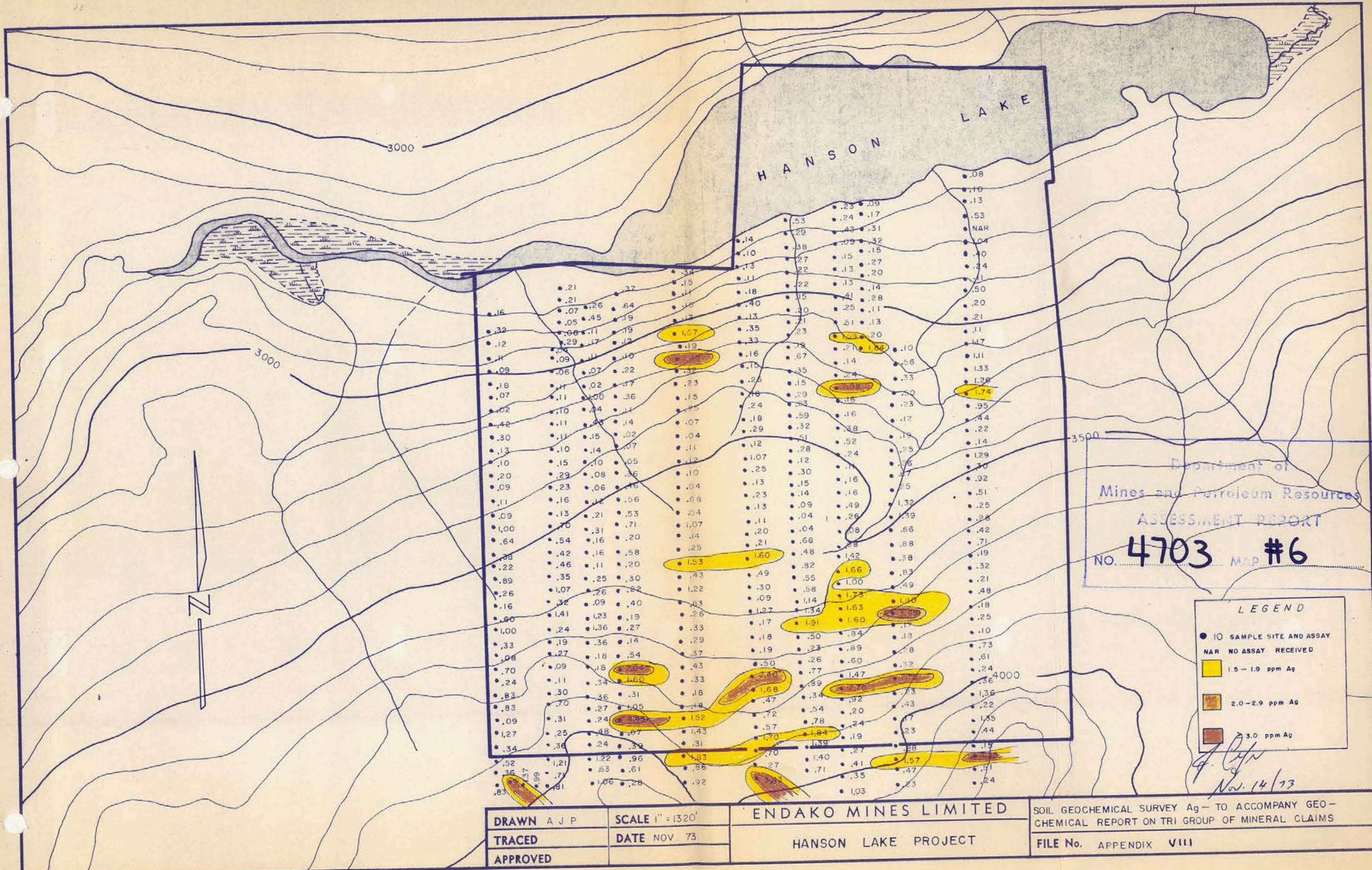
Department of
Mines and Petroleum Resources
ASSESSMENT REPORT
NO. 4703 MAP #5

LEGEND

- 15 SAMPLE SITE AND ASSAY
- 80 - 150 ppm Cu
- 151 - 300 ppm Cu
- >300 ppm Cu

J. C. [Signature]
Nov. 14/73

DRAWN A J P	SCALE 1" = 1320'	ENDAKO MINES LIMITED	SOIL GEOCHEMICAL SURVEY Cu — TO ACCOMPANY GEOCHEMICAL REPORT ON TRI GROUP OF MINERAL CLAIMS
TRACED	DATE NOV. 73		
APPROVED		HANSON LAKE PROJECT	FILE No. APPENDIX VII



Department of
Mines and Petroleum Resources
ASSESSMENT REPORT
NO. 4703 MAP #6

LEGEND

- IO SAMPLE SITE AND ASSAY
- NAR NO ASSAY RECEIVED
- 1.5 - 1.9 ppm Ag
- 2.0 - 2.9 ppm Ag
- > 3.0 ppm Ag

A. J. P.
Nov. 14/73

DRAWN A J P	SCALE 1" = 1320'	ENDAKO MINES LIMITED	SOIL GEOCHEMICAL SURVEY Ag - TO ACCOMPANY GEO-CHEMICAL REPORT ON TRI GROUP OF MINERAL CLAIMS		
TRACED	DATE NOV 73			HANSON LAKE PROJECT	FILE No. APPENDIX VIII
APPROVED					

APPENDIX IX

DOMINION OF CANADA:
 PROVINCE OF BRITISH COLUMBIA.
 To Wit:

In the Matter of

Expenditures for Geochemical Survey on Tri Group of Mineral Claims from 18 June to 21 June, 1973.

I, J. B. CYR

of CANEX PLACER LIMITED, ENDAKO MINES DIVISION

in the Province of British Columbia, do solemnly declare that the following expenditures have been incurred by Canex Placer Limited, Endako Mines Division, in carrying out soil geochemical survey for assessment work purposes on Tri 1-37 inclusive Mineral Claims. Work done outside claim boundaries was not included as assessment work.

<u>Personnel</u>	<u>Dates Employed</u>	<u>Time and Rate</u>	<u>Cost</u>
B.W. Bosdet	18 June- 21 June	45 hr @ 3.70	\$166.50
P. Buckley	18 June- 21 June	47 hr @ 4.15	195.05
J. Cyr	18 June- 21 June	48 hr @ 5.90	283.20
R. Lau	18 June- 21 June	48 hr @ 4.05	194.40
A.J. Peters	18 June- 21 June	47 hr @ 4.80	225.60
C. Scott	18 June- 21 June	48 hr @ 3.85	184.80
S.W. Wilson	18 June- 21 June	43 hr @ 4.15	178.45
			\$ 1,428.00
Office Overhead @ 15% of 1,428.00			214.20
Subtotal personnel costs			\$ 1,642.20
<u>Transportation Costs</u>			
Transprovincial Airlines Ltd., Flight Nos. 28541 and 29627			340.00
<u>Geochemical Assaying Costs</u>			
Determinations for Mo, Cu, Pb, Zn and Ag. 399 samples @ \$3.50			1,396.50
<u>Map Compilations</u> - A.J. Peters 38 hrs @ \$4.80			182.40
<u>Camp Operations Costs</u>			
B.W. Bosdet	2 days @ \$10.00/man day	\$20.00	
P. Buckley	2 days @ \$10.00/man day	\$20.00	
J. Cyr	2 days @ \$10.00/man day	\$20.00	
R. Lau	2 days @ \$10.00/man day	\$20.00	
A.J. Peters	2 days @ \$10.00/man day	\$20.00	140.00
			140.00
<u>Total Soil Geochemical Survey Expenditures</u>			\$ 3,701.10

And I make this solemn declaration conscientiously believing it to be true, and knowing that it is of the same force and effect as if made under oath and by virtue of the "Canada Evidence Act."

Declared before me at the Village
 of Burns Lake, in the
 Province of British Columbia, this 15th
 day of November 1973, A.D.

J. Cyr

[Signature]
 A Commissioner for taking Affidavits for British Columbia or
 A Notary Public in and for the Province of British Columbia