

4728

93E/15E, 15W

GEOCHEMICAL AND MAGNETOMETER SURVEYS

MIN 5-9 MINERAL CLAIMS

OMINECA M.D. B.C.

126-54 NW

11-7-73 : 20-8-73

Alfred R. Allen, P.Eng.

For:

SAIWA RESOURCES LTD. (N.P.L.)

Vancouver, B.C.

Department of
Mines and Metallurgical Resources

ASSESSMENT REPORT

NO.

4728

MAP

By:

ALLEN GEOLOGICAL ENGINEERING LTD.
601 - 325 Howe Street
Vancouver, B.C.

October 15, 1973.

CONTENTS

INTRODUCTION..... 1.
LOCATION AND ACCESSIBILITY..... 2.
PROPERTY..... 2.
TOPOGRAPHY..... 2.
GEOLOGY..... 3.
GEOCHEMICAL SURVEY..... 4.
 Survey Procedure..... 4.
 Survey Results..... 4.
MAGNETOMETER SURVEY..... 5.
 Survey Procedure..... 5.
 Survey Results..... 6.
SUMMARY AND CONCLUSIONS..... 6
RECOMMENDATIONS..... 7.
REFERENCES..... 8.

MAPS:

- #1 1. Location Map
- #2 2. Claims Map
- #3 3. Geochemical Survey
- #4 4. Magnetometer Survey
- #5 5. Geochemical and Magnetic Anomalies
- #6 Property map

* * * * *

GEOCHEMICAL AND MAGNETOMETER SURVEYS

MIN GROUP

OMINECA M.D. B.C.

INTRODUCTION

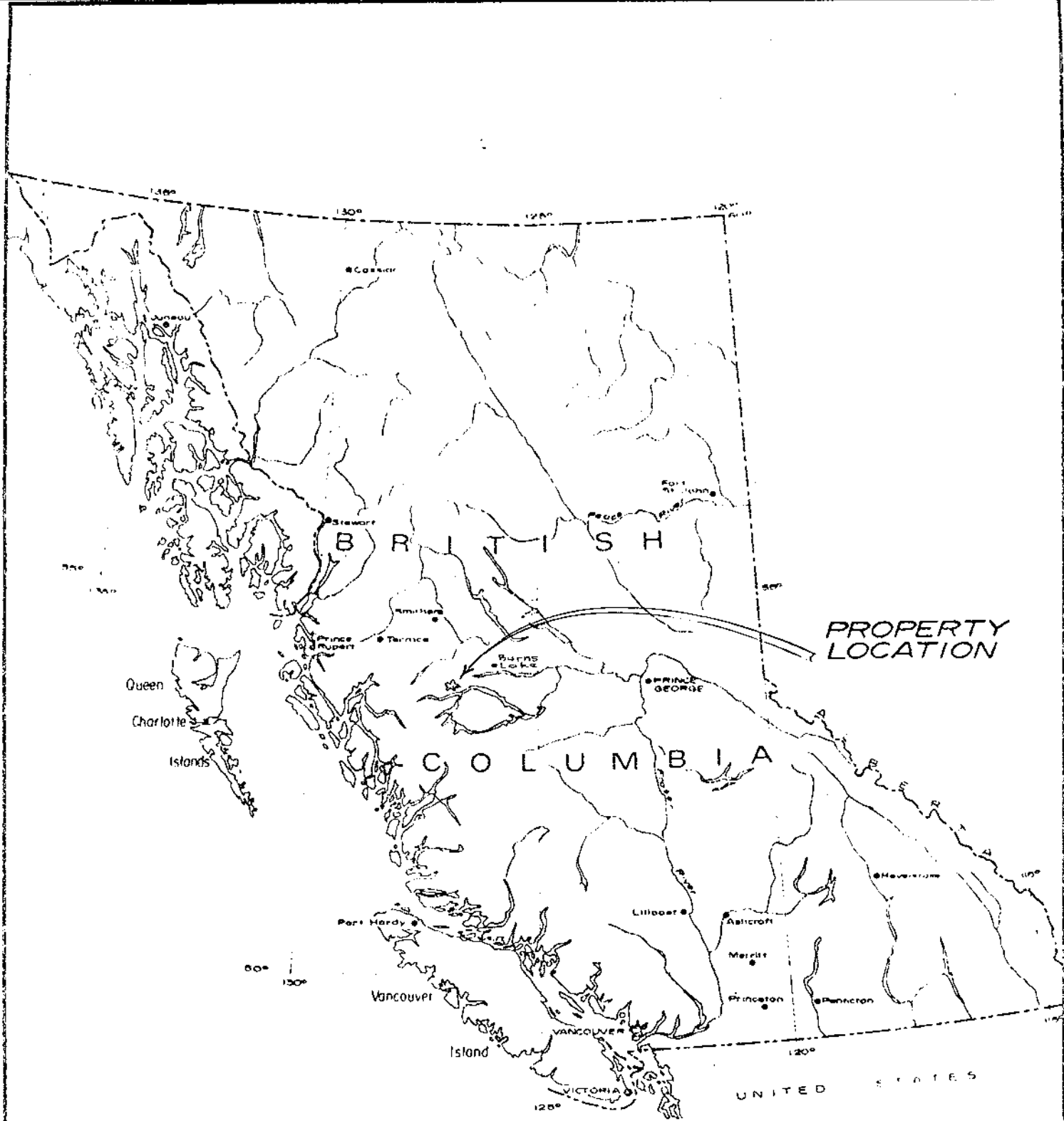
Geochemical and magnetometer surveys were conducted over a 400 foot by 100 foot surveyed grid on the MIN 5-9 claims July 11 - August 20, 1973.

The writer, who had previously examined the property, acted as consulting engineer. The field crew was comprised of Alan McRae, D. Jensen, R.D. Clarke, R. Olsen, and T. Honchu and G. Romanelli.

At each 100 foot station soil samples were taken from the B zone, and magnetometer readings noted with a Scintrex MF 2 magnetometer.

The purpose of the survey was to detect variations in the vertical component of the magnetic field, and the copper and molybdenite content of the overburden.

The object of this report is to present the results of the surveys, and provide interpretations of same with regard to potential copper-molybdenum mineralization underlying the grid area.



Department of
 Mines and Technical Resources
 ASSESSMENT REPORT
 NO. **4728** MAP **#1**

SAIWA RESOURCES LTD. (NPL)	
LOCATION MAP	
SCALE: 1" = 136 Mls.	
Drawn by	Date OCT. 15/73
Checked by	Drq no. 2.
ALLEN GEOLOGICAL ENGINEERING LTD.	

LOCATION AND ACCESSIBILITY

The property is located in central British Columbia, 50 miles southwest of Burns Lake.

Geographic location is longitude $126^{\circ} - 45'$ west and $53^{\circ} - 50'$ north latitude.

Access by motor vehicle is via excellent logging roads which extend westerly from the Burns Lake - Ootsa Lake road.

PROPERTY

Saiwa Resources Ltd. (N.P.L.) hold the following mineral claims by location.

MIN 1-20 Recorded June 1, 1972, 111916 - 111935

The key lines and posts were examined by the writer and found to be staked in accordance with the British Columbia Mineral Act.

TOPOGRAPHY

The property lies in an area of subdued topography about 4 miles west of Ootsa Lake on the lower southerly slopes of Shelford Hills.

Elevation is 3,500 feet above sea level.

Drainage is southeasterly into Ootsa Lake.

MIN 2	MIN 1	MIN 12	MIN 11
MIN 4	MIN 3	MIN 14	MIN 13
MIN 6	MIN 5	MIN 16	MIN 15
MIN 8	MIN 7	MIN 18	MIN 17
MIN 10	MIN 9	MIN 20	MIN 19

Department of
Mines and Petroleum Resources
ASSESSMENT REPORT

NO. **4728** MAP **#2**

SAIWA RESOURCES
LTD. (N.P.L.)

SKETCH PLAN
MIN 1-20 MINERAL CLAIMS

500 0 500 1000 1500

No:2

Scale - FT.

Oct. 15/73

ALLEN GEOLOGICAL ENG. LTD
D. Eng.

GEOLOGY

The area is underlain by Jurassic sedimentary and volcanic rocks of the Hazelton Group. Coast Range intrusives occur throughout the region. It is with quartz diorite porphyry intrusives that the copper-molybdenum mineralization is associated on the MIN group.

A partially exposed mineral deposit on the MIN 7 claim includes silicified volcanic rocks and probably altered sediments which have been extensively fractured and penetrated by quartz stringers with associated sulphides and oxides of iron, copper and molybdenum. Dykes or plugs of differentiated granitic rocks, containing similar metallic mineralization, have been intruded into the older volcanic and sedimentary rocks. The exposed area is approximately 300 feet in diameter.

The included minerals, in order of abundance, are pyrite, chalcopyrite, molybdenite, magnetite and pyrrhotite (?).

Although fracturing and alteration of these rocks on the exposed area is intensive the general structural trend appears to be northwesterly.

Representative specimens have been collected by the writer, and E.O. Chisholm in February 1973, reported that two grab samples assayed as follows:

<u>Copper %</u>	<u>Molybdenum%</u>
0.44	0.028
0.22	0.08

GEOCHEMICAL SURVEYSurvey Procedure

A Base Line was established with a chain and compass survey along the central line of the MIN 5-9 inclusive in a north-south direction. At 400-foot intervals parallel east-west lines were surveyed by chain and compass to the claim boundaries. Stations were established every 100 feet along the cross lines. Lines were blazed and flagged.

A sample of soil was taken from the "B" zone at each station and placed in a geochemical sample bag marked with the station location. At each sample location notes were made regarding topography, vegetation, and other pertinent data.

The samples were shipped to Crest Laboratories of Vancouver, dried, screened to -80 mesh, digested with HCl O_4 and HN O_3 and by atomic absorption equipment assayed for copper and molybdenum.

Copper results are shown on the accompanying map in parts per million.

Molybdenum results were mostly 2 parts per million. The assays higher than 2 are shown on the accompanying map, below the copper assay, and circled.

Survey Results

As indicated on the accompanying maps the areas containing the highest copper content in the "B" zone of the overburden are located south and east of the area tested by trenching and stripping and are as follows:

680 E to 750 E : 970 N to 1280 N : 82 to 112 ppm Cu.
490 E to 680 E : 360 N to 650 N : 92 to 108 ppm Cu.
50 W to 270 W : 190 N to 690 N : 88 to 170 ppm Cu.
480 E to 740 E : 50 S to 70 N : 84 to 106 ppm Cu.

The copper content of these anomalous zones is such that a thorough check by additional field work should be made over each area.

The molybdenum results were spotty, but the highest were at or close to copper anomalies.

MAGNETOMETER SURVEY

Survey Procedure

On the same grid pattern established over the MIN 5-9 claims a magnetometer survey was conducted.

A Scintrex MF 2 instrument was used.

The vertical component of the magnetic field was recorded at each station. Twice daily diurnal checks were made. Corrected readings in gammas were noted in a field book.

The results are shown on the accompanying map, without, for clarity, the last digit of each reading, i.e., 59 represents 590 gammas.

Survey Results

Three areas of strong magnetic effects were outlined as shown on the accompanying map.

On the MIN 7 & 8 claims

From 550 W to 380 E and 690 S to 1490 N : 640 to 2800 gammas

On the MIN 5 & 7 claims

From 1140 N to 1870 N and 780 E to 1360 C : 820 to 880 gammas

On the south boundary of MIN 9 & 10 claims

From 1200 S to 1600 S and 310 W to 1260 E : 800 to 1070 gammas

The area of trenching and stripping is located on the south boundary of the largest and strongest anomaly. This area warrants thorough checking and the work should be extended 600 feet to the northeast, over the location of the "S" shaped anomaly.

The anomaly on the south boundary appears to be strong and warrants investigation.

Geochemical and magnetic anomalies are shown on map #5. After a detailed field examination of the anomalous areas, test holes may be spotted at selected locations to test bedrock to about 200 feet of depth.

SUMMARY AND CONCLUSIONS

Geochemical and magnetometer surveys were conducted over the MIN Group of mineral claims, southwest of Burns Lake in the Shelford Hills area.

SUMMARY AND CONCLUSIONS (continued)

Prior exploratory work had exposed a zone about 300 feet in diameter showing copper and molybdenum along with iron mineralization in a complex of silicified and fractured sedimentary and volcanic rocks with quartz diorite porphyry intrusives.

The results of the geochemical and magnetometer surveys point to additional field data requirements over anomalous areas at and near the known zones of mineralization.

A drilling programme is warranted to check the zones to depths of about 200 feet below the surface.

RECOMMENDATIONS

The following programme is recommended for the MIN Group of claims:

	<u>Estimated Cost</u>
1. Check the geochemical and magnetometer anomalies on the ground and sketch as much geological data as available,	\$ 1,000.00
2. Locate twenty-five drill sites and prepare same for drilling,	1,500.00
3. Drill 25 vertical holes using percussion equipment to approximately 200 feet of depth. Assay 10-foot samples where mineral content warrants,	17,000.00
4. Office, supervision and overhead,	3,500.00
5. Contingencies,	<u>2,000.00</u>
Estimated total costs,	\$ 25,000.00

Estimated completion time for this programme is 30 days.

Respectfully submitted,

ALLEN GEOLOGICAL ENGINEERING LTD.

Per Alfred R. Allen P. Eng.
Alfred R. Allen

Vancouver, B.C.
October 15, 1973.

REFERENCES

- Duffell, S., G.S.C. Paper 52 - 21, Memoir 299 , 1959
- Chisholdm, E.O., Report on MIN Claims, February 28, 1973.
- Allen, A.R., Report on MIN Claims, July 1973.

* * * * *

Alfred R. Allen

Geochemical and Magnetometer Surveys

MIN GROUP: OMINECA M.D.

11-7-73 : 20-8-73

EXPENDITURES

Crew

Alan McRae, Langley, B.C.-Operator, July 11-31 and Aug. 10-20	\$ 900.00
D. Jensen, " " Assistant, " "	900.00
R.D. Clarke, " " " "	900.00
Alan McRae, Langley, B.C.-Operator, Aug. 10-20	600.00
R. Olsen, " " Assistant, "	550.00
T. Honchu, " " " "	400.00
G. Romanelli " " " "	400.00
A.R. Allen, Vancouver, B.C., Consulting Engineer, September 20, 24-30 inclusive, October 1, 9, 15, 16	1000.00
Truck, 4-w-d	999.00
Station Wagon	405.00
Food and camp supplies	426.15
Magnetometer Rental	360.00
Assaying	1343.55
Office, reports, mapping, typing	65.00
	<hr/>
	\$ 9248.70

Declared before me at the *City*
of *Vancouver*, in the
Province of British Columbia, this *17*
day of *October*, 1973, A.D.

Alfred R. Allen

A. J. Gervette
A Commissioner for taking Affidavits within British Columbia or
A Notary Public in and for the Province of British Columbia.

SUB-MINING RECORDER

FIELD CREW

Geochemical and Magnetometer Surveys

MIN Group Omineca M.D.

11-7-73 : 20-8-73

Alan McRae,	Operator,	Langley, B.C.
D. Jensen,	Assistant,	" "
R.D. Clarke	"	" "
R. Olsen,	"	" "
T. Honchu,	"	" "
G. Romanelli,	"	" "

Allen Geological Engineering Limited

601-325 HOWE STREET, VANCOUVER 1, B.C.

Office 682-5747 Residence 922-0227

CERTIFICATE

October 15, 1973.

I, Alfred R. Allen, certify that:

I am a graduate of the University of British Columbia and hold the following degrees therefrom:

BASc Geological engineering 1939

MASc Geological Engineering 1941

I am a member of the Association of Professional Engineers of the Province of British Columbia.

I have practised my profession for the past twenty-eight years.

I hold no interest in the properties or securities of Saiwa Resources Ltd. (N.P.L.), or affiliates thereof, nor do I expect to receive any, directly or indirectly.

The report on the Geochemical and Magnetometer Surveys MIN 5-9 Mineral Claims, Omineca M.D., B.C., is based on an examination of the property by the writer on July 5, 1973.

I consent to this report being filed with the British Columbia Securities Commission.



Alfred R. Allen

Allen Geological Engineering Limited

601-325 HOWE STREET, VANCOUVER 1, B.C.

Office 682-5747 Residence 922-0227

October 15, 1973.

British Columbia Securities Commission
756 Fort Street
Victoria, B.C.

Dear Sirs:

Re: Saiwa Resources Ltd. (N.P.L.)

I hereby consent to the use of my report Dated October 15, 1973, on the Geochemical and Magnetometer Surveys MIN 5-9 Mineral Claims, Omineca M.D., B.C., for Saiwa Resources Ltd. (N.P.L.), in any prospectus or statement of material facts or other material to be filed with the British Columbia Securities Commission or the Vancouver Stock Exchange by Saiwa Resources Ltd. (N.P.L.)

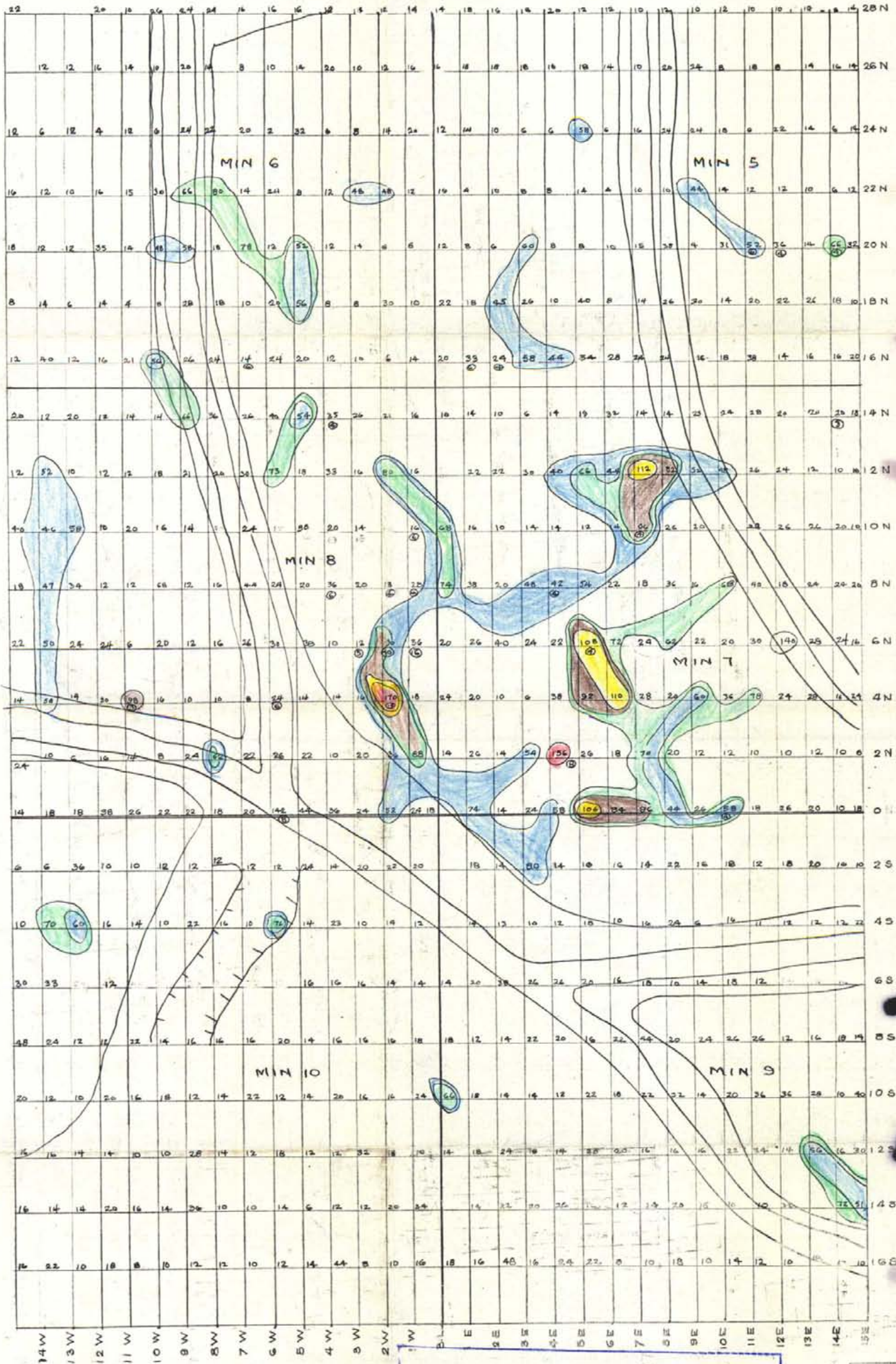
Yours very truly,

 P.Eng.

Alfred R. Allen

For:

ALLEN GEOLOGICAL ENGINEERING LTD.



LEGEND

Copper in p.p.m.

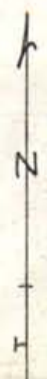
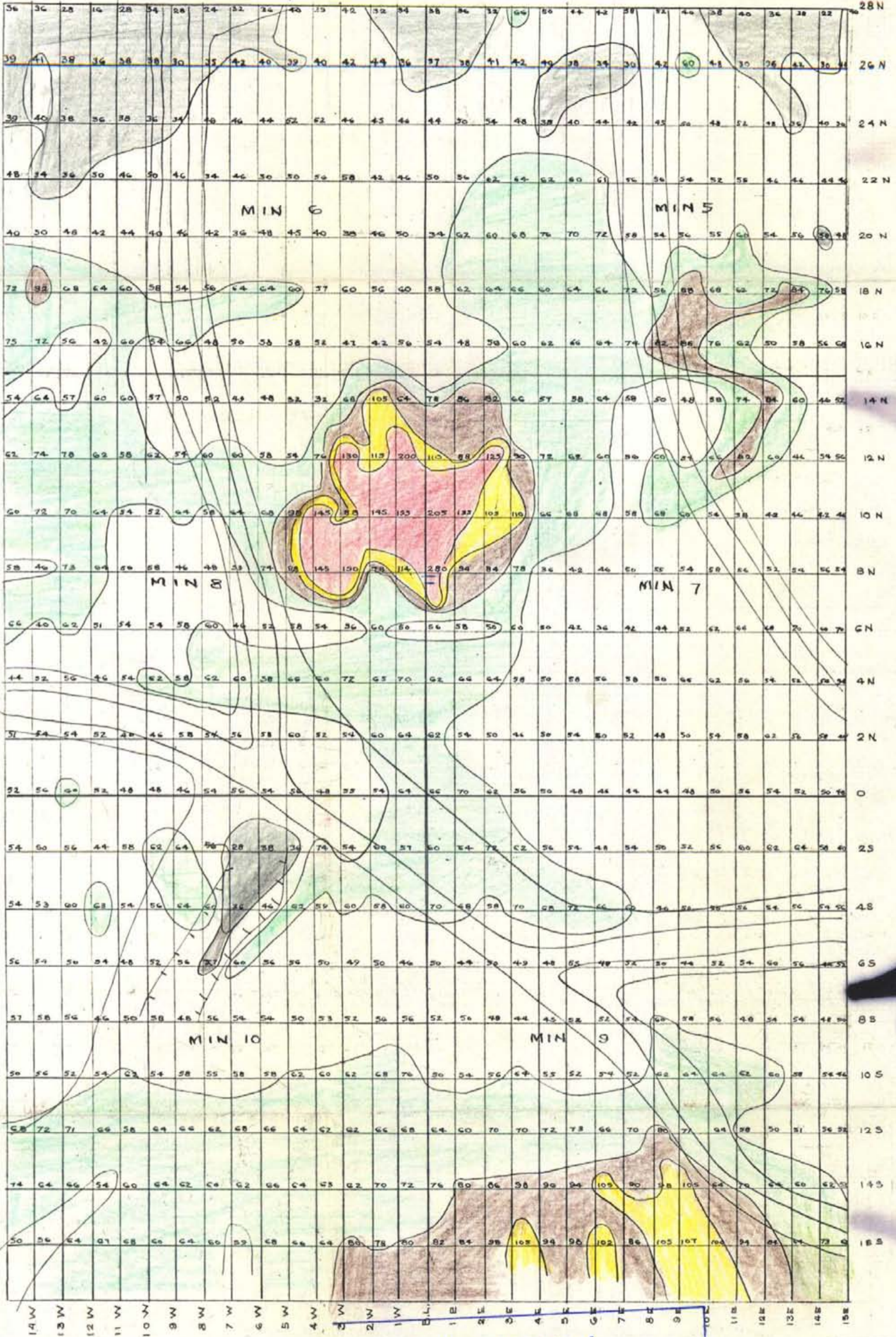
0	40
41	60
61	80
81	100
101	120
121 +	

Molybdenum p.p.m.
Other samples

Notes
All soil samples taken from the B zone.

Department of
Minas and Petroleum Resources
ASSESSMENT REPORT
NO. **4728** MAP **#3**

SAIWA RESOURCES (INCORPORATED)
SHELPOUR HILLS PROPERTY: B.C.
GEOCHEMICAL SURVEY
No 3
SCALE - FEET
September 29/73
Allen Geochemical Engineering
Allen R. Eng.



4728
M4

LEGEND

Gammes

0 - 390	
400 - 590	
600 - 790	
800 - 890	
1,000 - 1190	
1,200 - +	

Notes:
All readings corrected for diurnal
& for simplicity shown above without
last digit i.e. 39 = 590 gammes.

Department of
Mines and Petroleum Resources
ASSESSMENT REPORT
NO. 4728 MAP #4

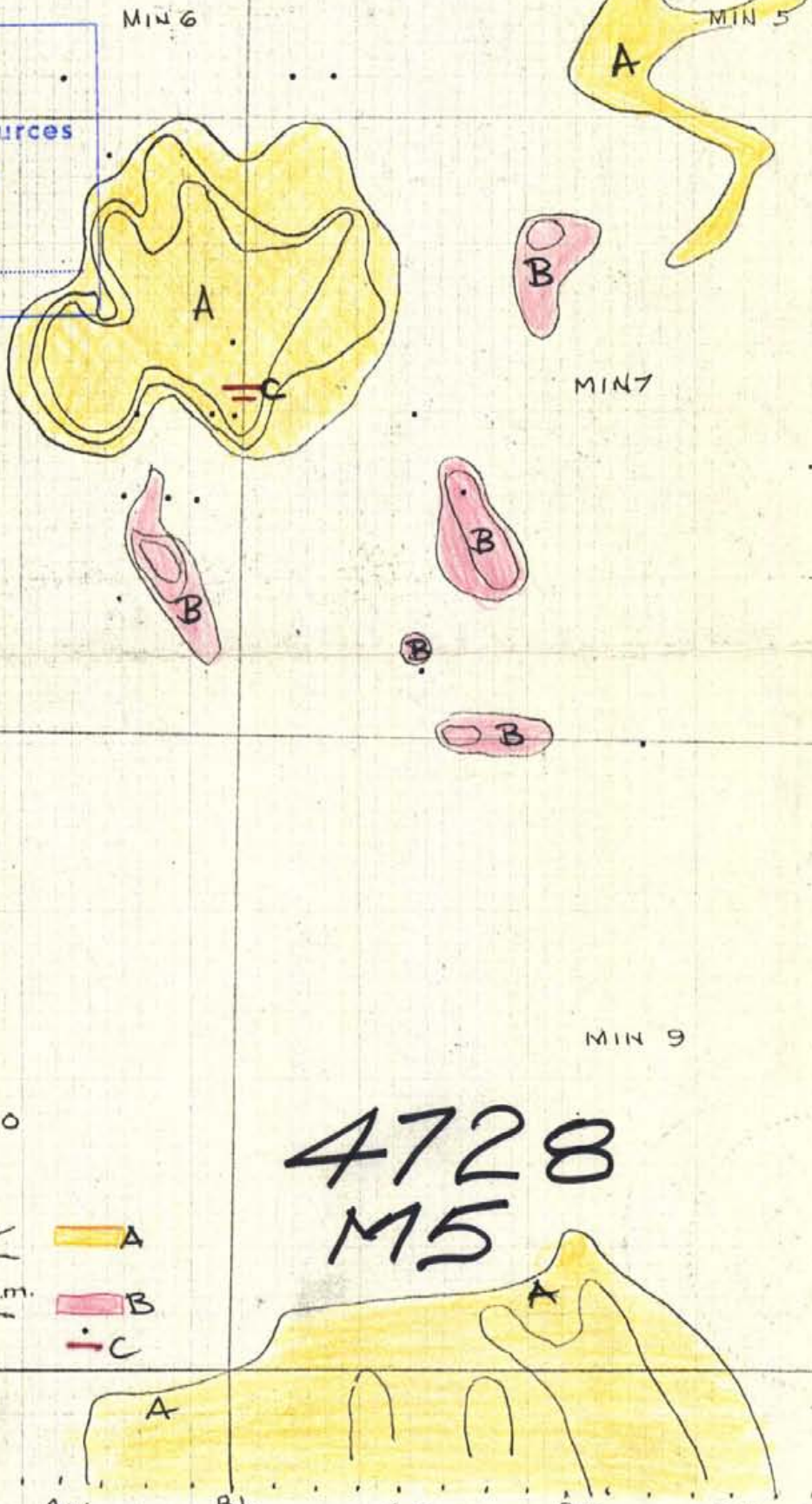
SAIWA RESOURCES (P) (P) LTD.
SHELFORD HILLS PROPERTY B.C.
MAGNETOMETER SURVEY
SCALE - FEET
No. 4
September 29/73
Allen Geological Engineering
R. Allen P. Eng.

SAIWA RESOURCES
ANOMALIES
GEOCHEMICAL & MAGNETOMETER
 Scale 1" = 400'



Department of
 Mines and Petroleum Resources
 ASSESSMENT REPORT
 NO. **4728** MAP **#5**

18N
 16N
 12N
 8N
 4N
 0
 4S
 8S
 12S

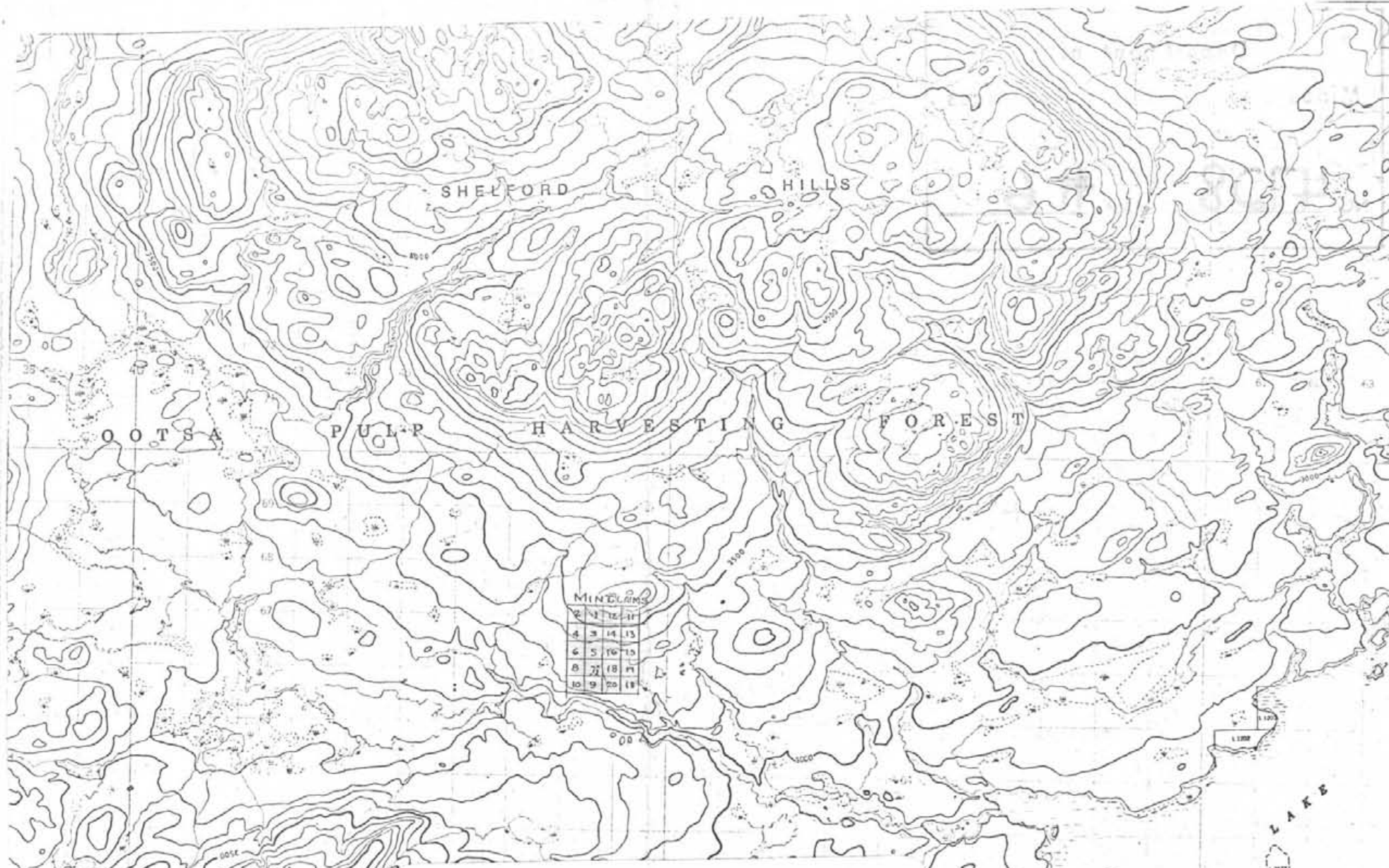


Magnetics: 800-2800 f ■ A
Copper: 81-170 ppm. ■ B
Molybdenum 3-14 ppm
Trenches — C

4728
M5

16W 12W 8W 4W BL 4E 8E 12E 15E

To Accompany Report: Allen Geological
 No. 5 *Alfred Allen* Engineering, Sept. 22/73



MINELANDS

2	12	11
4	14	13
6	16	15
8	18	17
10	20	19

SAIWA RESOURCES LTD. (N.P.L.)

PROPERTY MAP

No. S-3

Feb. 5/74

Allen Geological Engr. Ltd

per Alfred Allen P. Eng.

4728
M6

