

4815

COMINCO LTD.

EXPLORATION

NTS: 93 N/15,
94 C/2

WESTERN DISTRICT

19 DECEMBER 1973

93 N/15 E, 15 W

GEOCHEMICAL SURVEY

ON THE

CRIN MINERAL CLAIMS

OMINECA MINING DIVISION

REPORT BY

N. L. SZABO

PERIOD OF WORK

MAY 1, 1973 TO DECEMBER 15, 1973

Department of
Mines and Petroleum Resources
ASSESSMENT REPORT
NO. **4815** MAP.....

TABLE OF CONTENTS

	<u>PAGE</u>
SUMMARY.....	1
INTRODUCTION.....	1
GEOLOGY.....	1
GEOCHEMICAL SURVEY.....	1
Method.....	1
Sample Preparation and Analysis.....	1
Data Presentation.....	1
RESULTS.....	2
Crin Group No. I	2
Crin Group No. II	2
CONCLUSIONS	2
 ATTACHMENTS:	
EXHIBIT "A"	
#1 Plate 1 - Location Map, Crin Claims	1" = 80 miles
#2 Plate 2 - Claim Map, Crin Claims	1" = 1 mile
#3 Plate 3 - Zn Geochemistry (Crin Group I)	1" = 400'
#4 Plate 4 - Pb Geochemistry (Crin Group I)	1" = 400'
#5 Plate 5 - Zn Geochemistry (Crin Group II)	1" = 400'
#6 Plate 6 - Pb Geochemistry (Crin Group II)	1" = 400'

COMINCO LTD.

EXPLORATION

WESTERN DISTRICT
19 DECEMBER 1973

GEOCHEMICAL SURVEY
ON THE CRIN MINERAL CLAIMS

SUMMARY:

A soil survey consisting of approximately 29 miles of lines sampled at 200' intervals and 6.66 miles sampled at 100' intervals was conducted on the two groups of the Crin claims. A number of lead and zinc anomalies were outlined, in general the anomalies were coincident with showings already known.

INTRODUCTION:

The Crin claims are located twelve air miles north of Germansen Landing in North-Central British Columbia in the Omineca Mining Division. The claims are in two separate groups, Crin 1 to Crin 16 (Group II), and Crin 17 to Crin 56 (Group I). Access to the property is by scheduled flight from Prince George to Germansen Landing and by helicopter from there to the claim group.

GEOLOGY:

The Crin claims are underlain by limestones and shales. The "Omineca limestone belt" of Middle Devonian Age consists of interbedded arenaceous and argillaceous limestones; dense, crystalline, and crinoidal limestones; dolomites; and dolomitic limestones. The limestones are overlain by argillite and slate. A number of low grade zinc showings occur in the limestone, dolomite formation.

GEOCHEMICAL SURVEY

Method

The soil survey was done by Newcastle Explorations Ltd. under the supervision of the writer and F. Martonhegyi. Lines were spaced at 200' intervals and samples were collected along the lines at either 200' or 100' intervals. Soils in general were not well developed on the property and the "horizon" sampled was the grass like material occurring beneath the Ae horizon.

Sample Preparation and Analysis

All samples were oven dried then sieved. The -80 mesh fraction was then analyzed for hxPb and hxZn using a hot nitric acid attack to bring ions into solution. Analysis was done with a Tectron 5 atomic absorption unit using standard techniques. Statistical analysis gave the following threshold ($\bar{x} + 2S$) values: $\text{Pb}_t = 144$ ppm, and $\text{Zn}_t = 265$ ppm.

Data Presentation

Plate 1 - Location Map, Crin Claims	1" = 80 miles
Plate 2 - Claim Map, Crin Claims	1" = 1 mile
Plate 3 - Zn Geochemistry (Crin Group I)	1" = 400'
Plate 4 - Pb Geochemistry (Crin Group I)	1" = 400'
Plate 5 - Zn Geochemistry (Crin Group II)	1" = 400'
Plate 6 - Pb Geochemistry (Crin Group II)	1" = 400'

RESULTS

Crin Group No. I

Anomalous Zn values extend over the entire length of grid two. The best part of the anomaly overlies known mineralized showings and has a coincident lead anomaly associated with it. No other significant lead anomalies are found on grids.

Two coincident lead zinc anomalies on grid three, (22N + 8W and 30N + 8W) are associated with minor showings. No other anomalies of significance occur on grid three.

Crin Group No. II

One large coincident lead zinc anomaly extends from approximately 4N to 44N. The best portions of the anomaly lie over two areas of known mineralization.

CONCLUSIONS:

The geochemical soil survey over some of the Crin claims has outlined a number of anomalous areas, however, all significant anomalies are associated with low grade showings already known.

Submitted by: Nicholas L Szabo
N.L. Szabo
Geochemist

Endorsed for
Release by: W.T. Irvine
W.T. Irvine, P.Eng.
Manager, Exploration

NLS/pm
19 December 1973

Attachments:

Exhibit "A"	
Plate 1 - Location Map, Crin Claims	1" = 80 miles
Plate 2 - Claim Map, Crin Claims	1" = 1 mile
Plate 3 - Zn Geochemistry (Crin Group I)	1" = 400'
Plate 4 - Pb Geochemistry (Crin Group I)	1" = 400'
Plate 5 - Zn Geochemistry (Crin Group II)	1" = 400'
Plate 6 - Pb Geochemistry (Crin Group II)	1" = 400'

Distribution:

Administration
Mining Recorder
Western District
NLS

DOMINION OF CANADA:
PROVINCE OF BRITISH COLUMBIA.
To Wit:

In the Matter of

STATUTORY DECLARATION RELATING
TO EXPENDITURES ON THE GEOCHEMICAL
SURVEY ON THE CRIN GROUPS, OMINECA
MINING DIVISION

I, **NICHOLAS LOUIS SZABO**

of **CITY OF VANCOUVER**

in the Province of British Columbia, do solemnly declare that

- (1) COPIES OF A REPORT REGARDING A GEOCHEMICAL SURVEY ON CERTAIN CLAIMS SITUATED IN THE OMINECA MINING DIVISION ARE BEING FILED WITH THE MINING RECORDER IN VANCOUVER.
- (2) ATTACHED HERETO, AND MARKED WITH THE LETTER "A" UPON WHICH I HAVE SIGNED MY NAME AT THE TIME OF DECLARING HEREOF, IS A STATEMENT OF EXPENDITURES INCURRED IN CONNECTION WITH THE GEOCHEMICAL SURVEY OF THE SAID CLAIMS SHOWING IN ADDITION THE PERIOD DURING WHICH THOSE MAKING THE SAID SURVEY PERFORMED THEIR WORK.

And I make this solemn declaration conscientiously believing it to be true, and knowing that it is of the same force and effect as if made under oath and by virtue of the "Canada Evidence Act."

Declared before me at the City
of Vancouver, in the
Province of British Columbia, this 21
day of December 1973, A.D. } Nicholas L Szabo

Joan June
A Commissioner for taking Affidavits within British Columbia or
A Notary Public in and for the Province of British Columbia.

Sub - mining Recorder

In the Matter of

.....
.....
.....
.....

Statutory Declaration
(CANADA EVIDENCE ACT)

COMINCO LTD.

EXPLORATION
NTS: 93 N/15
94 C/2

WESTERN DISTRICT

EXHIBIT "A"

COST OF GEOCHEMICAL SOIL SURVEY

CRIN GROUPS I & II

NORTH CENTRAL BRITISH COLUMBIA

OMINECA MINING DISTRICT

Report writing by N.L. Szabo, Project Geologist 2 man days @ \$80/day	\$ 160.00
Field Supervision N.L. Szabo, 2 man days @ \$80/day F. Martonhegyi, geologist, 2 man days @ \$70/day, V. Budrevics, geological assistant 2 man days @ \$45/day	\$ 390.00
Domicile: 6 man days @ \$10/day	\$ 60.00
Drafting and compiling 4 man days @ \$50/day	\$ 200.00
Linecutting (baseline) 2½ miles (local help) 9 man days @ \$37.50/day	\$ 337.50
Soil sampling, Newcastle Explorations 29 miles of lines @ 200' centers at \$45/mile 6.66 miles of lines @ 100' centers at \$67.50/mile	\$1,305.00 \$ 449.55
1095 samples analyzed for Pb and Zn at \$1.50/sample	\$1,642.00
Helicopter for mobilization, camp moves, demobilization Jet ranger 3½ hrs At \$260/hr Bell GB2 1½ hrs At \$160	\$ 910.00 \$ 240.00
TOTAL:	\$5,694.05

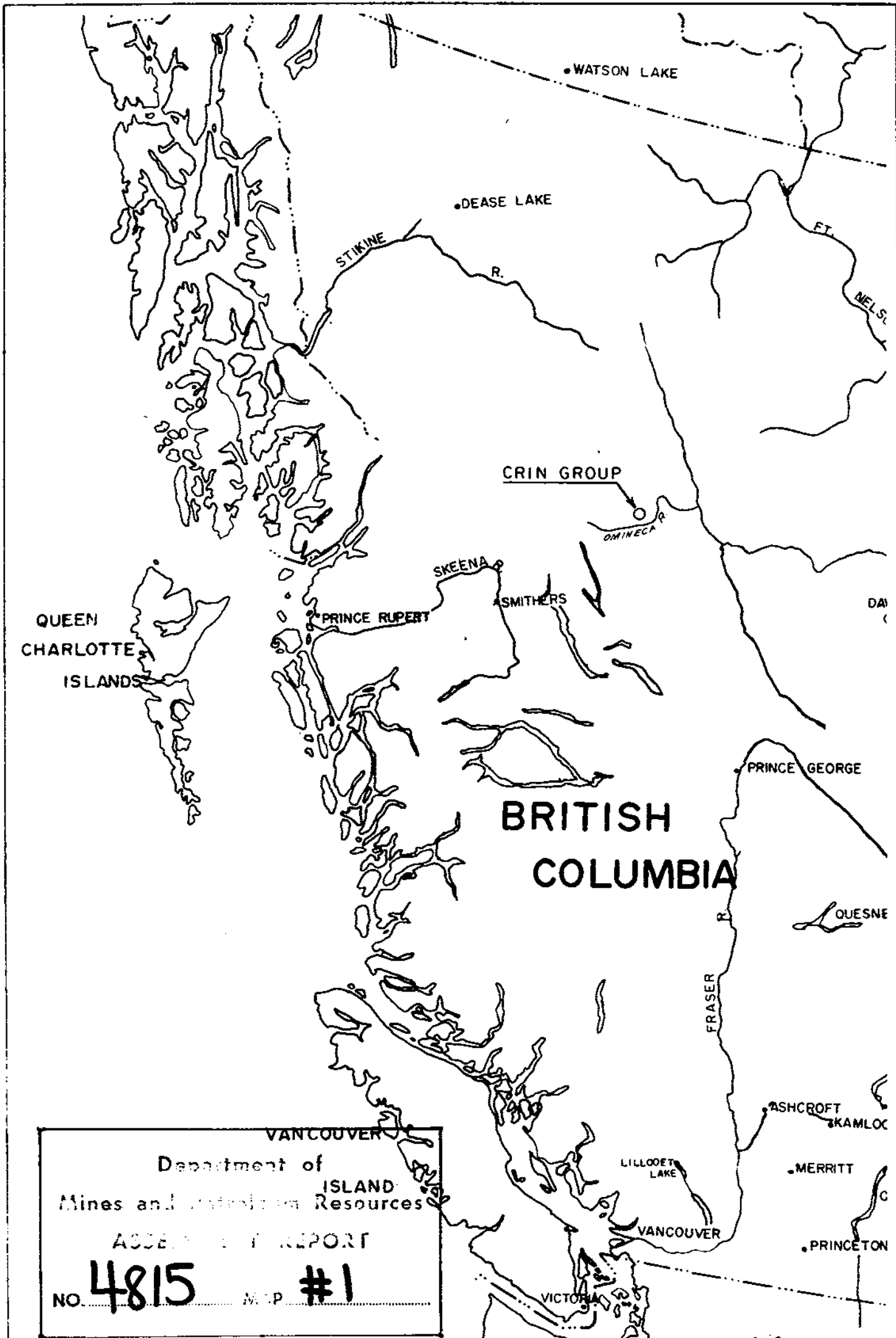
SAMPLING AND ANALYSIS WERE DONE BETWEEN MAY 1, 1973 AND DECEMBER 15, 1973

SIGNED: Nicholas L Szabo
N. L. Szabo
Geochemist

THIS IS EXHIBIT "A" TO THE STATUTORY DECLARATION OF NICHOLAS L. SZABO
DECLARED BEFORE ME THIS 21 DAY OF December 1973.

Jacques J. J. J.
A NOTARY PUBLIC IN AND FOR THE
PROVINCE OF BRITISH COLUMBIA

Sub-mining Recorder



VANCOUVER
 Department of
 Mines and Technical Resources
 ISLAND
 ASSESSMENT REPORT
 NO. **4815** MAP **#1**

To accompany report by
N. L. Szabo *N. L. Szabo*



Drawn by: FM	Traced by:
Revised by	Date
Revised by	Date

**CRIN GROUP
 LOCATION MAP**

Scale: 1" = 80 Miles Date: Dec., 1973 Plate: 1

COMINCO LTD.

EXPLORATION

WESTERN DISTRICT

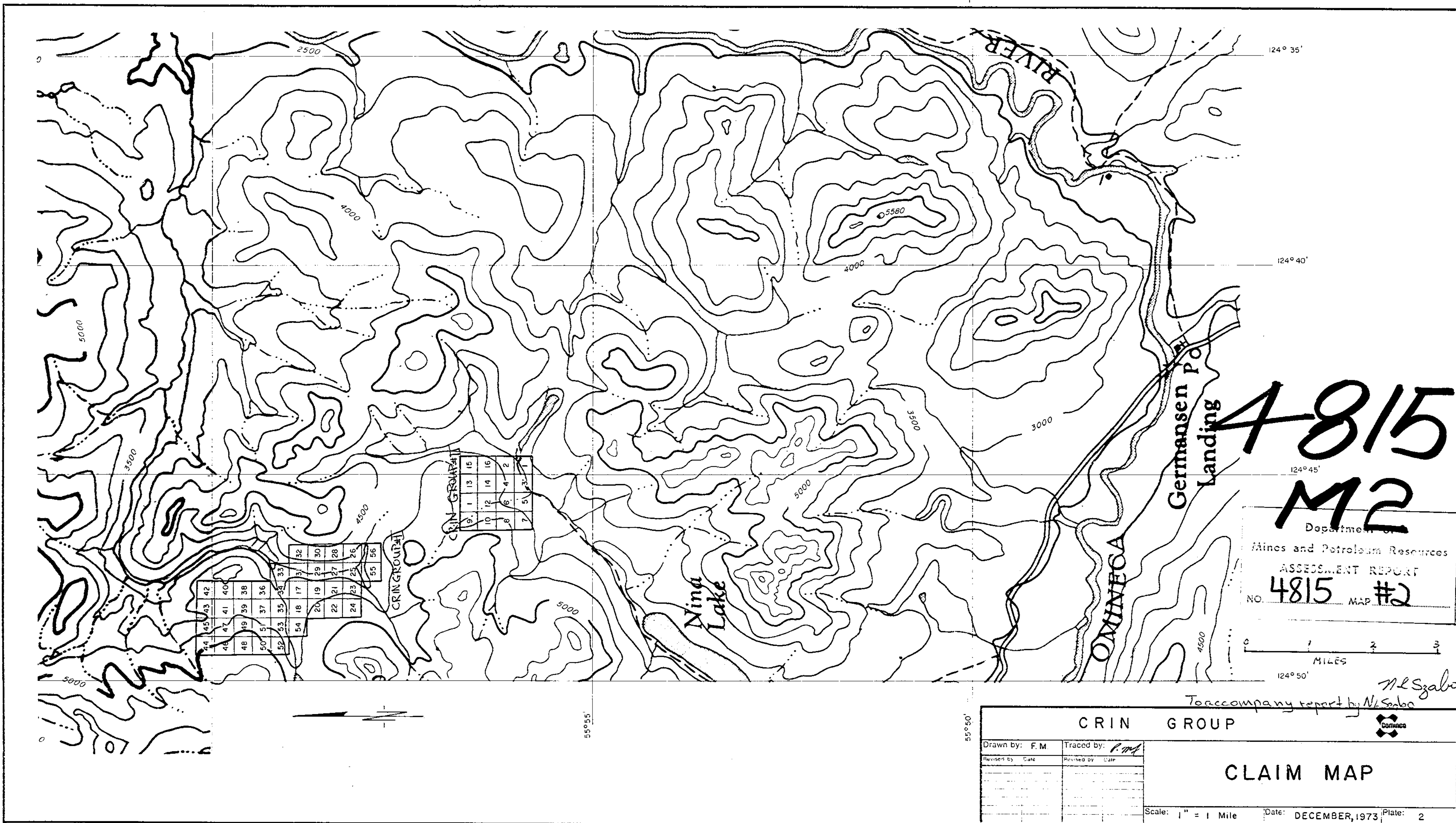
STATEMENT OF QUALIFICATIONS

N. L. Szabo was responsible for conducting the geochemical survey described herein. Mr. Szabo has received his M.Sc. from the University of Connecticut and expects to receive his Ph.D. in the coming academic year from the University of New Brunswick. He has worked with the New Brunswick Mines Branch and the Geological Survey of Canada, and I consider him a competent and experienced geochemist.

Signed:

J. Richardson.

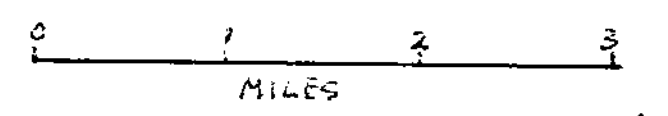
J. Richardson, P. Eng.



4815

M2

Department of
Mines and Petroleum Resources
ASSESSMENT REPORT
NO. 4815 MAP #2



To accompany report by N. Szabo

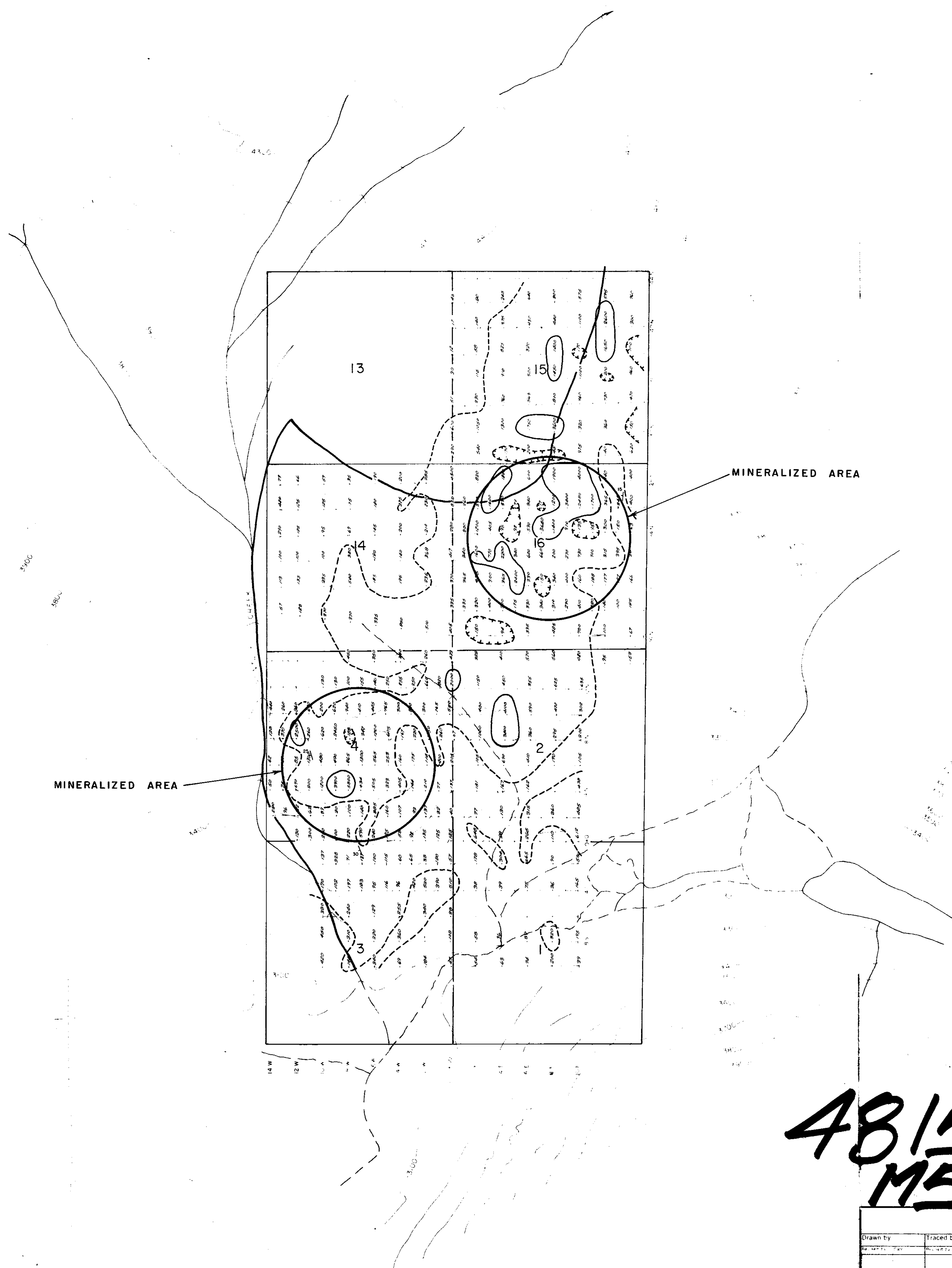
N. Szabo
Comac

CRIN GROUP

Drawn by: F.M.	Traced by: P.M.
Revised by: _____	Revised by: _____
Date: _____	Date: _____

CLAIM MAP

Scale: 1" = 1 Mile Date: DECEMBER, 1973 Plate: 2



LEGEND

- Slate - (Penn. - Perm.)
- Carbonate (Ord. - Mid. Dev.)

SOIL GEOCHEMISTRY

- Zn threshold (265 ppm)
- Zn threshold x 5 (720 ppm)

MINERALIZED AREA

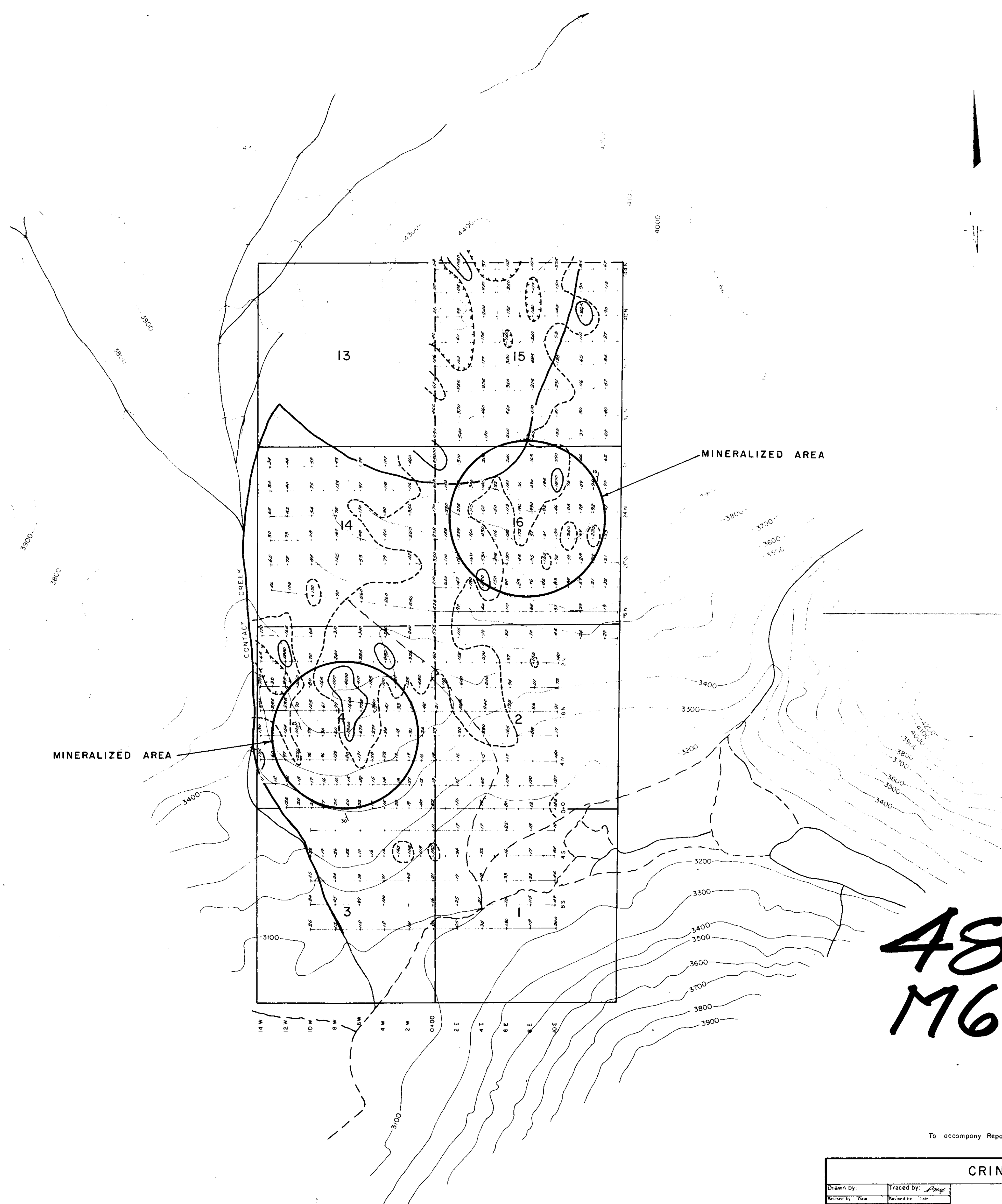
MINERALIZED AREA

**4815
M5**

Department of
 Mines and Geology Resources
 ANNUAL REPORT
 NO. **4815** P. #5

To accompany Report by N.L. Szabo *N.L. Szabo*

CRIN CLAIMS	
Drawn by Traced by <i>CSJ</i>	Zn Geochemistry GRID 1 CLAIM NOS. 1 - 16 Scale 1" = 400' Date November 2, 1973 Plate 5



LEGEND

- Slate - (Penn. - Perm.)
- Carbonate (Ord. - Mid. Dev.)

SOIL GEOCHEMISTRY

- - - - - Pb threshold (144 ppm)
- Pb threshold x 5 (720 ppm)

4815
M6

Department of
 Mine and Geologic Resources
 Pennsylvania Geological Survey
 NO. 4815 MAP #6

To accompany Report by N.L. Szabo *N.L. Szabo*

CRIN CLAIMS		Pb Geochemistry GRID 1 CLAIM NOS. 1-16 Scale: 1" = 400' Date: November 2, 1973 Plate: 6
Drawn by	Traced by <i>Pope</i>	
Revised by	Revised by	

