

92E/15W, 92L/2W
GEOCHEMICAL REPORT

N.T.S. 92L/2

on the

ZEB GROUP

NEAR ZEBALLOS

VANCOUVER ISLAND, BRITISH COLUMBIA

owned by

CANADIAN SUPERIOR EXPLORATION LIMITED

by

THOMAS I. SHARPS, P.ENG.

4819

92E/15W,
92L/2W

PROPERTY DESCRIPTION: ZEB 1, 2, 3, 4, 5, 6
(RECORD NOS. 20242 - 20247 inclusive)

LOCATION: Headwaters of Hidden valley Creek
ZEBALLOS MINING CAMP
Lat. 50°05'N., Long. 126°45'W.
ALBERNI MINING DISTRICT

DATE STARTED: August 4, 1973

DATE COMPLETED: September 22, 1973

Department of	
Mines and Technical Resources	
ANALYTICAL REPORT	
NO.	4819

CONTENTS

	Page
A. INTRODUCTION	1
B. HISTORY OF PROPERTY	2
C. GEOLOGICAL EVIDENCE AND PURPOSE OF GEOCHEMICAL SURVEY	3
D. GEOCHEMISTRY	
1. METHODS	4
2. DISCUSSION OF RESULTS	5
E. CONCLUSIONS AND RECOMMENDATIONS	6

APPENDIX I

STATEMENT OF EXPENDITURES

ILLUSTRATIONS:

- # 1 Figure 1 Soil Geochemistry Gold.
- # 2 Figure 2 Soil Geochemistry Copper
- # 3 Figure 3 Soil Geochemistry Mercury

A. INTRODUCTION

This report describes geochemical assessment work to be applied against claims located near Zeballos at lat. 50°05'N., long. 126°45'W., in the Alberni Mining District, Vancouver Island, British Columbia. The claims held by Canadian Superior Exploration Limited of Vancouver, British Columbia include the ZEB 1, ZEB 2, ZEB 3, ZEB 4, ZEB 5 and ZEB 6 (Record Nos. 20242 - 20247 inclusive).

Geochemical sampling was restricted to the common boundary line between the ZEB 1, 3, 5 claims and ZEB 2, 4, 6 claims and to the common boundary line between the ZEB 4 and ZEB 6 claims.

The property is situated at the headwaters of Hidden Valley Creek approximately one mile N.E. of Zeballos. Elevations on the property range from 1,000 to 2,500 feet above mean sea level.

Access to the property is best made by tractor road out of Zeballos to the adjoining BANKO claims on Bingo Creek and thence by foot through the bush in a northwesterly direction.

B. HISTORY OF PROPERTY

The ZEB 1 through ZEB 6 claims were staked on August 3, 1973 by Raymond Lasmanis, Geologist and Agent for Canadian Superior Exploration Limited.

On August 4, 1973 Raymond Lasmanis assisted by Shane Bowden, student trainee, undertook a limited geochemical survey of the claims. On September 22, 1973 Raymond Lasmanis extended that survey.

Soil samples were taken at 100 foot intervals along claim lines. During this survey 57 samples from the "B" soil horizon were collected for geochemical analysis for copper, gold and mercury.

C. GEOLOGICAL EVIDENCE AND PURPOSE OF GEOCHEMICAL SURVEY

The ZEB claims cover the northwest extension of a bed of limestone which is mineralized by gold bearing massive pyrrhotite where it is exposed on the canyon walls of Bingo Creek on the BANKO claims to the southeast. At Bingo Creek the limestone bed is approximately 30 feet thick, lies between beds of andesite tuff and dips steeply to the northeast. This limestone is in part altered to actinolite which contains quartz-calcite-pyrrhotite stringers and grains and masses of pyrrhotite without the quartz and calcite. The pyrrhotite contains a small amount of chalcopyrite as well as variable but significant amounts of gold. As limestone is also reported (B.C. Department Mines Bulletin No. 27, Stevenson, J.S., 1950) to occur on Hidden Creek to the northwest of the ZEB claims along strike from the limestone found at the BANKO showing it is postulated that gold bearing limestone may exist on the ZEB claims between these two showings.

The purpose of the geochemical survey on the ZEB claims was to determine if anomalous conditions exist there which might be reflective of the extension of the auriferous limestone from the BANKO claims onto the ZEB claims.

D. GEOCHEMISTRY

1. Methods

- (a) Soil samples weighing approximately 50 grams were taken from the "B" horizon by means of a geologist's rock hammer and packaged in brown kraft paper sample envelopes. These samples were collected from sites within 10 feet of the designated stations with care being taken that they were true "B" horizon samples of soil with no humic content.
- (b) Samples were packaged in brown kraft paper sample envelopes expressly designed for that purpose and labeled as to location.
- (c) Samples were taken at 100 foot intervals along claim lines as depicted in the accompanying maps.
- (d) Samples were crushed and sieved through an 80 mesh nylon screen.
- (e) Analyses of soil samples were done by the firm of Bondar-Clegg and Company Ltd. in Vancouver, B.C.
- (f) Samples were analyzed for gold, mercury and copper.
- (g) To determine gold content 20 grams representing the original sample was fire assayed with the resultant button being dissolved in hot Aqua Regia for atomic absorption analysis. For copper a 1/2 gram representative sample was dissolved in hot Aqua Regia and analysed by atomic absorption. For mercury determinations samples were air dried and 1/2 gram samples were dissolved in controlled Aqua Regia and subjected to closed cell atomic absorption.

2. Discussion of Results

Gold values of over 10 ppb, copper values of over 40 ppm and mercury values of over 300 ppb are considered to be anomalous in the claim group area.

The geochemical survey of the ZEB claim group, although limited, has disclosed two areas which are anomalous for gold. One of these was encountered between stations 15N. and 21N. and the other between 8S. and 3N. and extending eastward to 5E. as depicted on the accompanying map. The anomaly found between stations 15 and 21N. may be reflective of the westward extension of the mineralized limestone found in the BANKO claims as it does lie within the projected area of that extension. The gold anomaly found between 8S. and 3N. may possibly be the surface expression of an east-west trending gold vein. Both of these gold anomalies are supported by high readings in those areas of both copper and mercury although the mercury readings do tend to be somewhat erratic.

E. CONCLUSIONS AND RECOMMENDATIONS

The anomalous area found between station 15N. and 21N. should be examined further and the ground should be trenched or pitted in that area to expose the bedrock. Further geochemical surveys should be carried out to delineate the anomaly found between 8S. and 3N. and extending to the east. Magnetometer, electromagnetic and self potential surveys of the claim area are recommended prior to any drilling.

These claims should be retained for further examination.

DEC. 20, 1973 *Thomas I. Sharps*

Thomas I. Sharps, P.Eng.

APPENDIX I

STATEMENT OF EXPENDITURES

In support of an affidavit on Application for Certificate of Work
on Mineral claims ZEB 1 - 6 inclusive.

1. Geochemical Survey

Salaries

R. Lasmanis, geologist, August 4 and September 22, 1973
2 days @ 78.41/day \$156.82

S. Bowden, assistant, August 4, 1973
1 day @ 27.27/day \$ 27.27

2. Living Expenses - 3 man days @ \$20.00/day \$ 60.00

3. Geochemical Analysis \$417.25

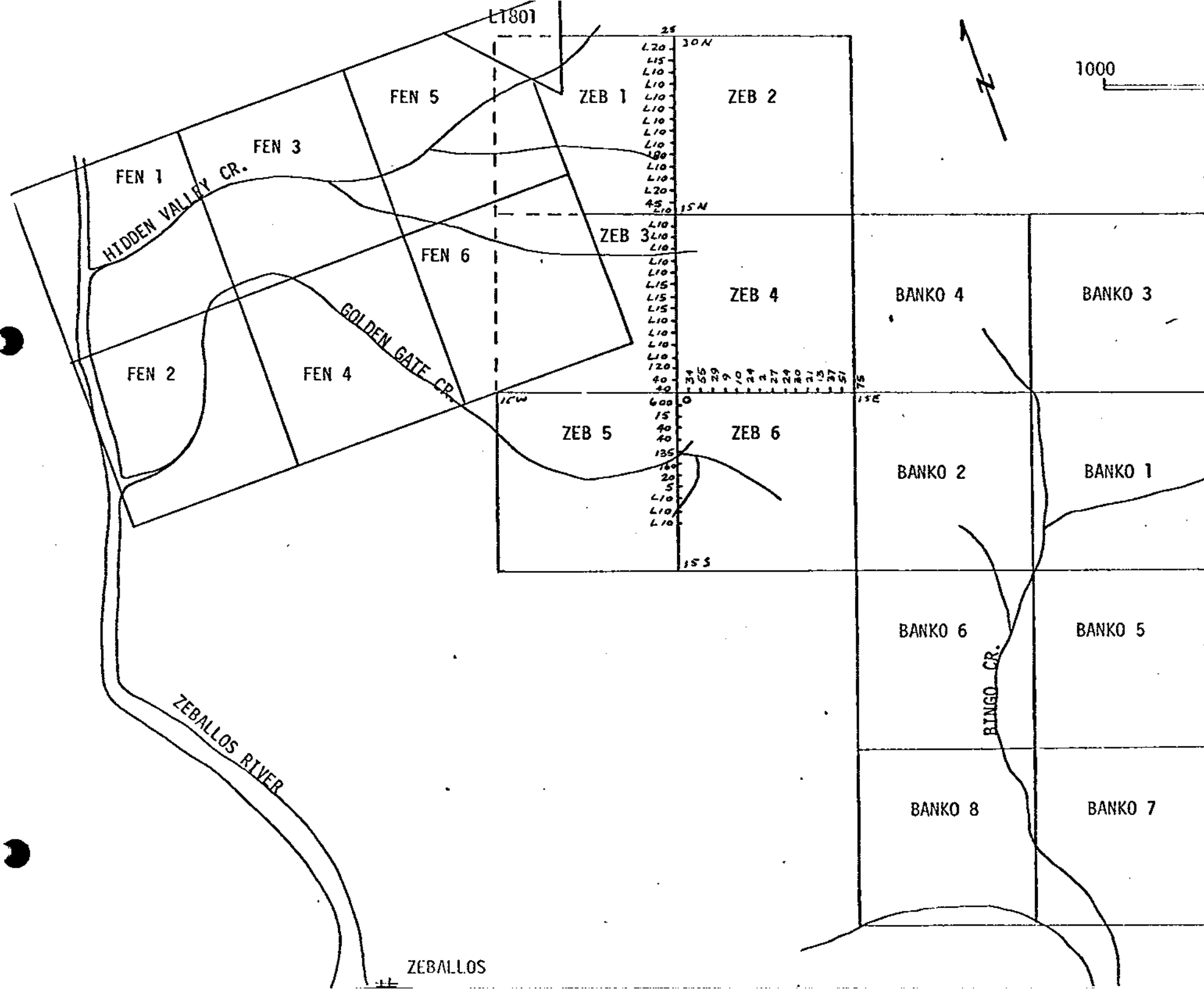
DIRECT COST OF SURVEYS \$661.34

Declared before me as the *City*
of *Vancouver*, in the
Province of British Columbia, this *20th*
day of *December* 1973, A.D.

Thomas J. Sharp

~~A Commissioner for taking Affidavits within British Columbia or
A Notary Public in and for the Province of British Columbia.~~

Sub-mining Recorder

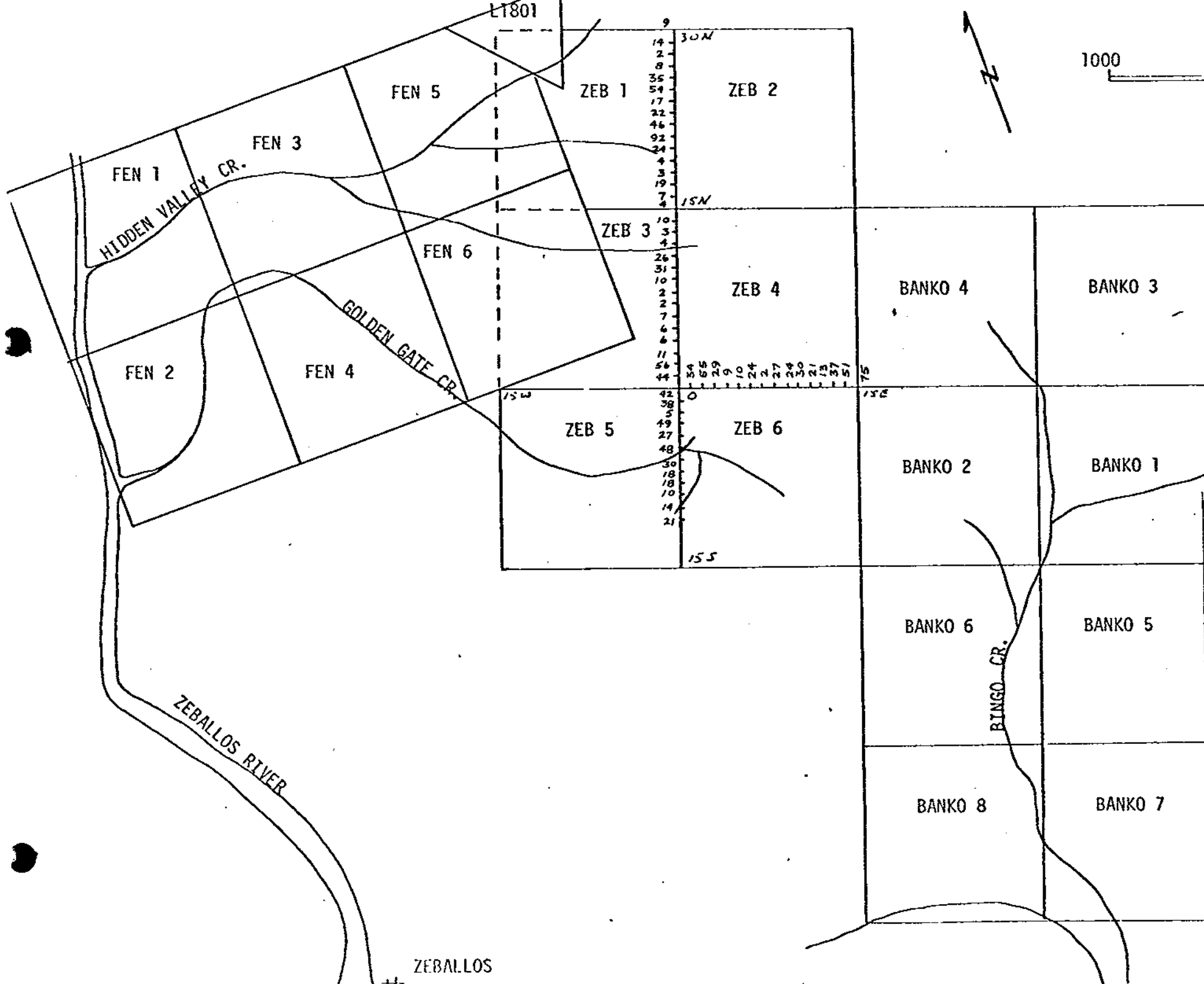


Department of
 Mines and Petroleum Resources
 ASSESSMENT REPORT
 NO. **4819** MAP #1

L denotes "less than"

CANADIAN SUPERIOR EXPLORATION LIMITED
 BANKO PROJECT
 ZEB GROUP
 Alberni Mining District
 NTS 92L/2
 SOIL GEOCHEMISTRY
 GOLD PPB

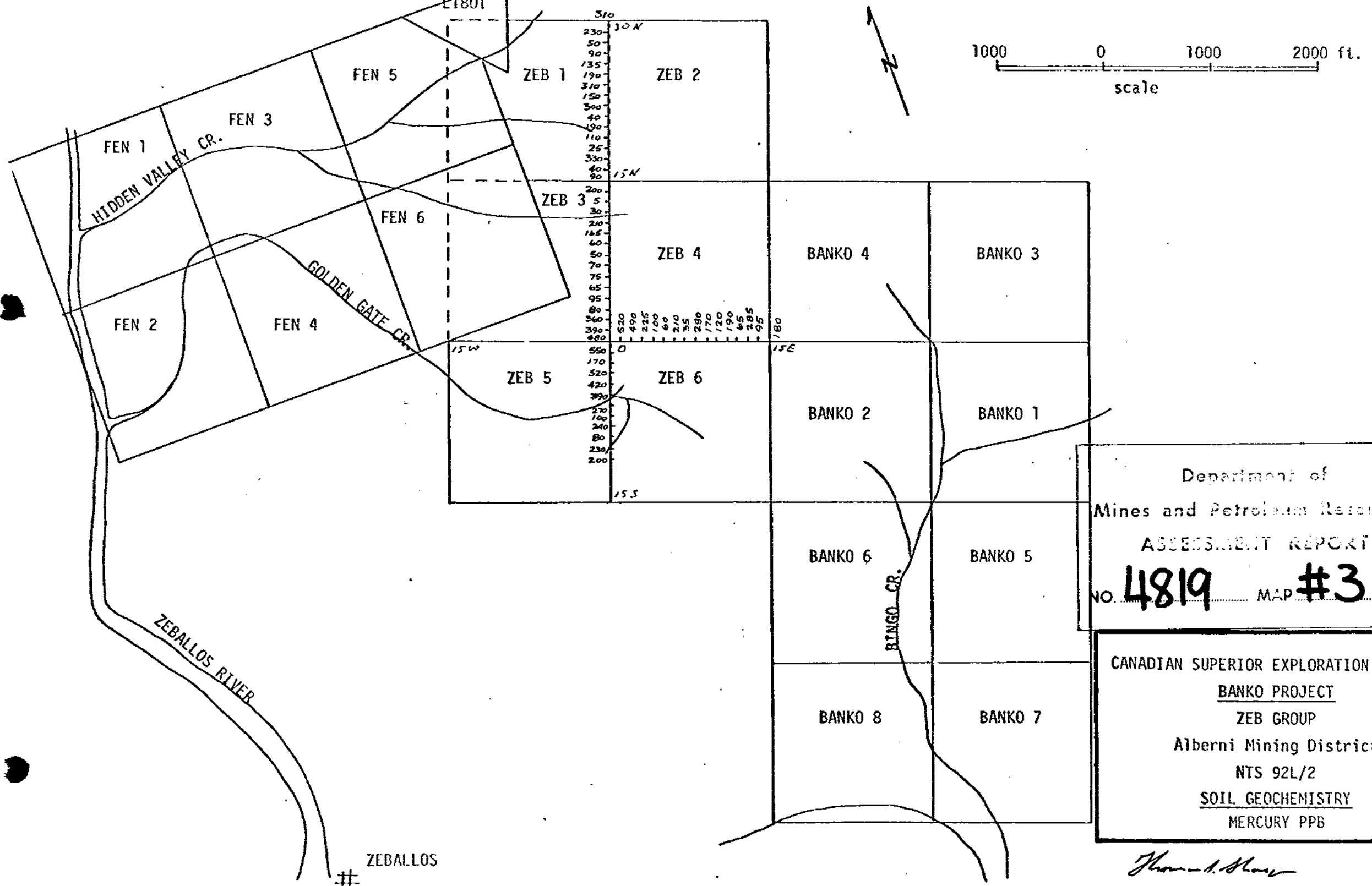
Thomas I. Gray



Department of
 Mines and Petroleum Resources
 ASSESSMENT REPORT
 NO. **4819** MAP #2

CANADIAN SUPERIOR EXPLORATION LIMITED
BANKO PROJECT
 ZEB GROUP
 Alberni Mining District
 NTS 92L/2
SOIL GEOCHEMISTRY
 COPPER PPM

Thomas I. Shaw



Department of
 Mines and Petroleum Resources
 ASSESSMENT REPORT
 NO. **4819** MAP **#3**

CANADIAN SUPERIOR EXPLORATION LIMITED
BANKO PROJECT
 ZEB GROUP
 Alberni Mining District
 NTS 92L/2
SOIL GEOCHEMISTRY
 MERCURY PPB

Thomas A. Shaw

ZEBALLOS
 #