



IP Survey - 1973
 L1905, 6050N, 7105

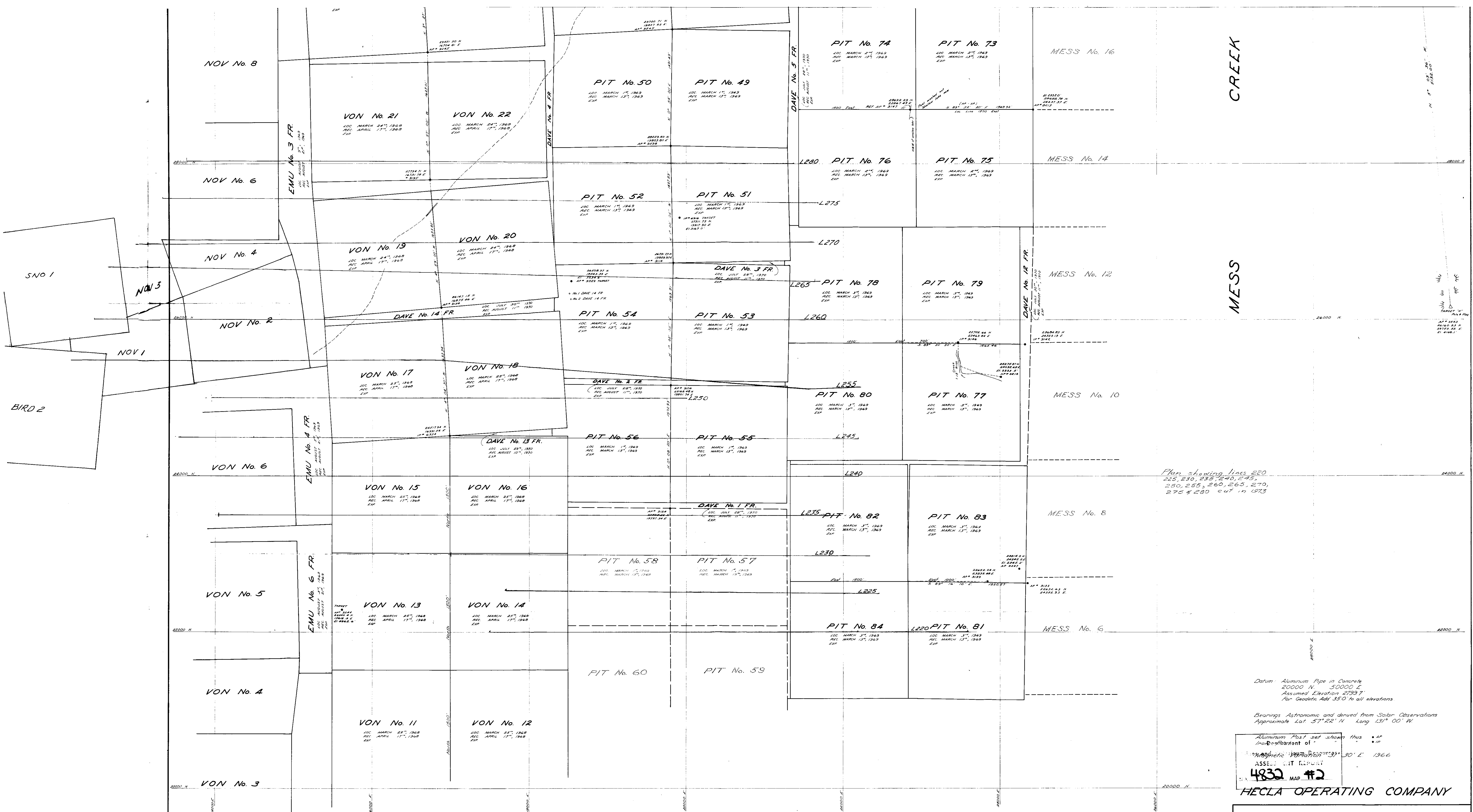
4832 MI

Department of
 Mineral and Geoscientific Resources
 Alberta
 CLAIM REPORT
 NO. 4832 #1

HECLA OPERATING CO.

LIARD PROJECT
 SHAFT CREEK B.C.
 CLAIM PLAN

Scale 1" = 2000' Date Feb. 1972 DWG No.



Plan showing lines 220, 225, 230, 235, 240, 245, 250, 255, 260, 265, 270, 275 & 280 cut in 1973

Datum: Aluminum Pipe in Concrete
 20000 N. 30000 E.
 Assumed Elevation 2199.7'
 for Geodetic, Add 35.0 to all elevations.

Bearings Astronomic and derived from Solar Observations
 Approximate Lat. 57° 22' N Long. 131° 00' W.

Aluminum Post set shown thus
 Inconspicuous Post shown thus
 ASSESSMENT REPORT
 4832 MAP #2

HECLA OPERATING COMPANY

MINERAL CLAIMS
 SCHAFT CREEK, B.C.

4832 M2

SCALE: 1 INCH = 400 FEET		DATE: 9 th SEPTEMBER, 1970		DWG. BY: M.M.	
UNDERHILL & UNDERHILL					
PROFESSIONAL ENGINEERS & B.C. LAND SURVEYORS					
DRAWING NUMBER					1289-5
NO.	DATE	REVISION	BY		