

4846

92I/7E

REY LAKE PROJECT

REPORT
ON

PERCUSSION DRILLING COSTS JUNE 13-AUG 5/73

AMERICAN SMELTING & REFINING COMPANY

LOCATED AT REY LAKE
approximately

16 MILES NORTH OF MERRITT, B.C.

ASHCROFT 92I/SE 50°-120°SE

D.H. Olson

January 1974

Department of	
Mines and Petroleum Resources	
ASSESSMENT REPORT	
NO. 4846	MAP.....

TABLE OF CONTENTS

	<u>PAGE NO</u>
ITEMIZED DRILLING COSTS	1
CALCULATION OF AVAILABLE ASSESSMENT CREDITS	2
APPENDIX "A" - ASSAY RESULTS	
#1 CLAIM MAP WITH DRILL HOLE LOCATIONS SCALE 1" = 1000'	
#2 KEY MAP - PROPERTY LOCATION Scale 1" = 2 Mi.	

ITEMIZED PERCUSSION DRILLING COSTS

Field Costs

Drilling 39 holes (PH 73-47 to 85) for a total of 9040' @ \$2.50 + costs/ft	\$ 23,360.00
June 13/73 - 5 Aug/73	
Access road building & drillsite preparation G. Garthwaite of Rey Creek Ranch, D-6 Cat May 26 - Aug 2/73	6,058.00
Slashing road right-of-way, W. Tymchuck Oct 1-21/73	2,900.00
Assaying 637 samples for Cu-Mo (ppm) Chemex Labs Limited	1,207.37
Freight - samples Merritt to Vancouver	29.43
Sample preparation (drying, splitting & packaging) C. Bossard, 30 days @ \$22.12/day June 13- 5 Aug/73	663.60
Road layout & hole survey D. Lemoine, 20 days @ 24.61/day , 13 June-5 Aug/73	492.20
Supervision and reports D.H. Olson, 20 days @ \$50/day 13 June - 5 Aug/73	1,000.00
Cook - R. Stutt and J. Shaw, 41 days @ \$700/mo	1,053.33

SUBSISTENCE & ACCOMMODATION

J. McKay - driller - 41 days @ \$14.32	587.12
R. Horning - driller - 41 days @ 14.32	587.12
C. Bossard -student assistant- 30 days @ \$14.32	429.60
D. Lemoine - labourer - 20 days @ \$14.32	286.40
D.H. Olson, Supervisor, 20 days @ \$14.32	286.40

Cost/ft. - $\frac{38,940.57}{9040} = \$ 4.31$

\$ 38,940.57

APPLICATION OF PERCUSSION HOLES PH73-64,67 & 68 AS ASSESSMENT TO CLAIMS REY 143-152, inclusive, RECORD NOS. 57982-57991, AND REY 71 & 72, RECORD NOS. 52224 & 52225, RESPECTIVELY WITHIN THE NORTHWEST GROUP.

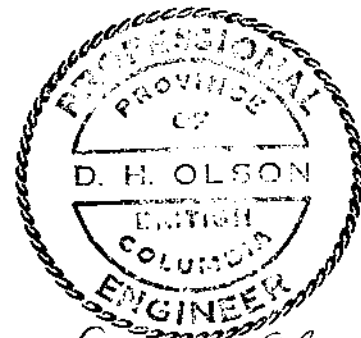
<u>HOLE NO.</u>	<u>HOLE LENGTH FEET</u>	<u>DEPTH OF O'BURDEN</u>	<u>INCLINATION</u>	<u>COLLAR ELEV.*</u>	<u>LAT.</u>	<u>DEPARTURE</u>
PH 73-67	100	70	-90°	4570	19,900N	12,750E
PH 73-68	250	26	-90°	4710	18,375N	11,300E
PH 73-64	300	19	-90°	4410	23,900N	13,700E
<u>TOTAL</u>	<u>650</u>					

TOTAL ASSESSMENT CREDIT APPLICABLE

$$650' \times \$4.31/\text{ft} = \$ 2,801.50.$$

SEE APPENDIX "A" FOR ASSAY RESULTS CORRELATABLE WITH HOLE DEPTHS IN THE ABOVE-MENTIONED PERCUSSION HOLES.

* - Approximately.



D. H. Olson

APPENDIX "A"

<u>PERCUSSION HOLE NO.</u>	<u>INTERCEPT</u>		<u>ASSAY</u>	
	<u>FROM</u>	<u>TO</u>	<u>PPM Cu</u>	<u>PPM Mo</u>
PH 73-67	70	80	28	1
	80	90	36	1
	90	100	32	1
PH 73-68	30	40	130	1
	40	50	132	1
	50	60	140	1
	60	70	36	1
	70	80	46	5
	80	90	53	7
	90	100	52	1
	100	110	26	1
	110	120	20	1
	120	130	23	1
	130	140	86	1
	140	150	35	1
	150	160	32	1
	160	170	45	1
	170	180	102	4
	180	190	40	1
	190	200	32	1
	200	210	144	1
	210	220	114	1
	220	230	36	1
230	240	30	1	
240	250	34	1	
PH 73-64	20	30	31	2
	30	40	36	1
	40	50	25	2
	50	60	25	1
	60	70	19	1
	70	80	22	1
	80	90	29	1
	90	100	26	1
	100	110	20	1
	110	120	19	1
	120	130	37	1
	130	140	33	1
	140	150	38	1
	150	160	76	2
	160	170	48	1
	170	180	29	1
	180	190	27	1
	190	200	36	1
	200	210	33	1
	210	220	28	2
	220	230	27	1
	230	240	26	1
	240	250	27	1
250	260	26	1	
260	270	24	1	
270	280	22	1	
280	290	18	1	
290	300	19	1	



REY LAKE PROJECT AREA

4846
M2

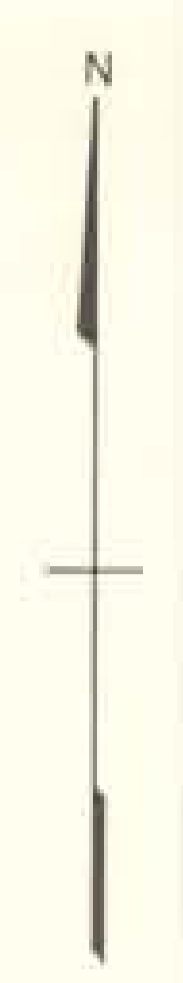
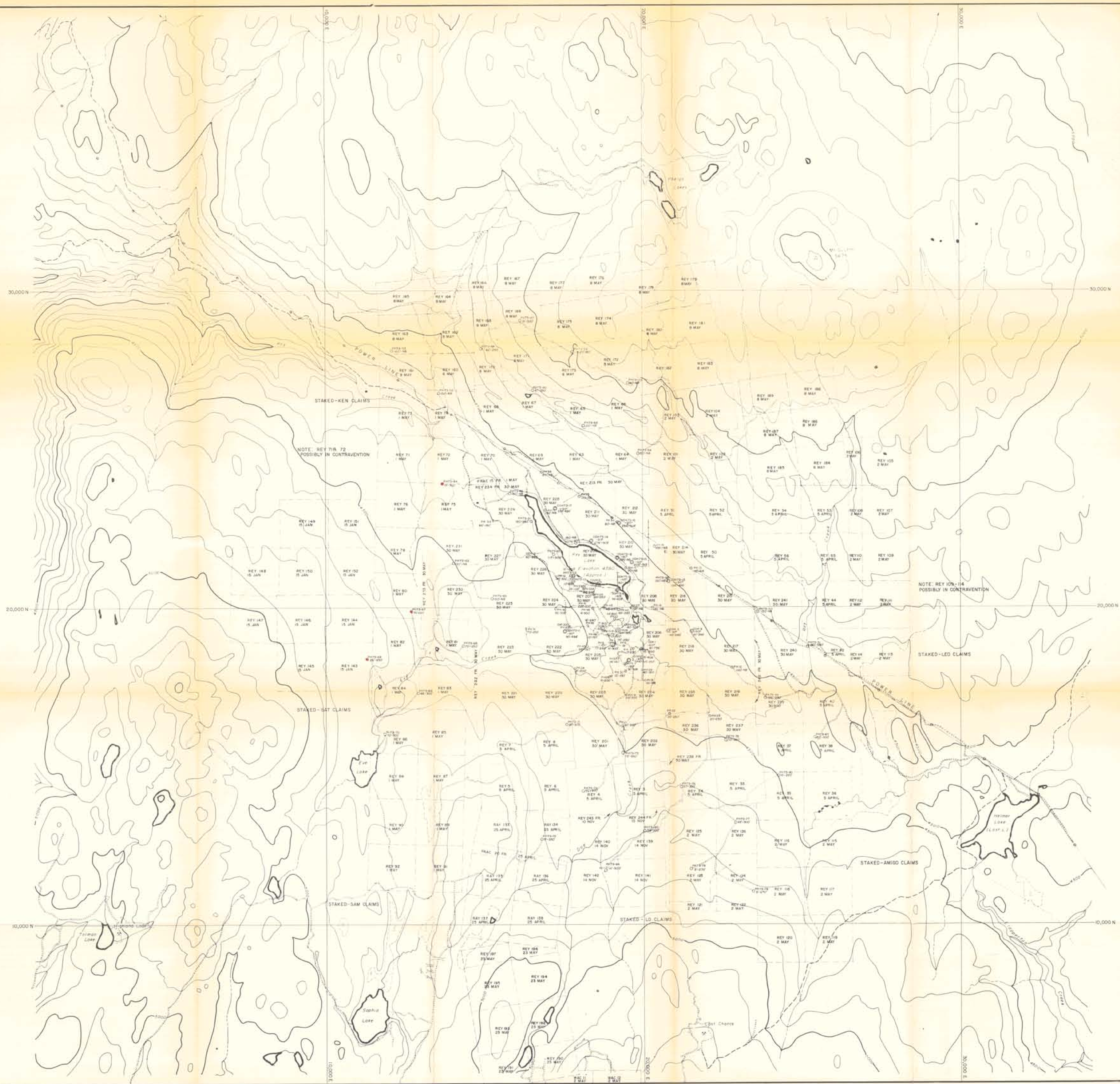


AMERICAN SMELTING & REFINING CO.
VANCOUVER B.C.

REY LAKE PROJECT KEY MAP

SCALE 1" = 2 MI.	DRAWN D.H.O.	DATE JAN./78	FILE 921/5E
---------------------	-----------------	-----------------	----------------

Department of
Mines and Petroleum Resources
ASSESSMENT REPORT
NO. 4846 MAP # 2



EXPLANATION

- REV 204 30 MAY CLAIM SURVEYED - NAME & ANNIVERSARY DATE
- REV 230 30 MAY CLAIM NOT SURVEYED - NAME & ANNIVERSARY DATE
- PH 42 65-220 PERCUSSION HOLE DRILLED 1972 DEPTH FROM COLLAR TO BEDROCK & BOTTOM OF HOLE - NO BEDROCK
- PH 73-78 6-270 PERCUSSION HOLE DRILLED 1973
- DDH # 167 DIAMOND DRILL HOLE DRILLED 1972 INCLINATION OF HOLE DEPTH FROM COLLAR TO BEDROCK & BOTTOM OF HOLE
- DDH 73-17 339-634 DIAMOND DRILL HOLE DRILLED 1973

Department of
Mines and Petroleum Resources
ASSESSMENT REPORT
NO. 4846 MAP #1

SCALE IN FEET

4846 M1



AMERICAN SMELTING & REFINING Co VANCOUVER B.C.	
REY LAKE PROJECT	CLAIM MAP
Drawn by: NEDIE MD.	DATE: NOV 1973
Drawn by: D.H. OLSON	FILE: NTS 92-1-52