

4863

104I/1W

Preliminary Topographic Map

of the

Kutcho Group

(S.M.R.B. 1 - 16 inclusive)

Liard Mining Division

Thirteen miles south of Rainbow Lake

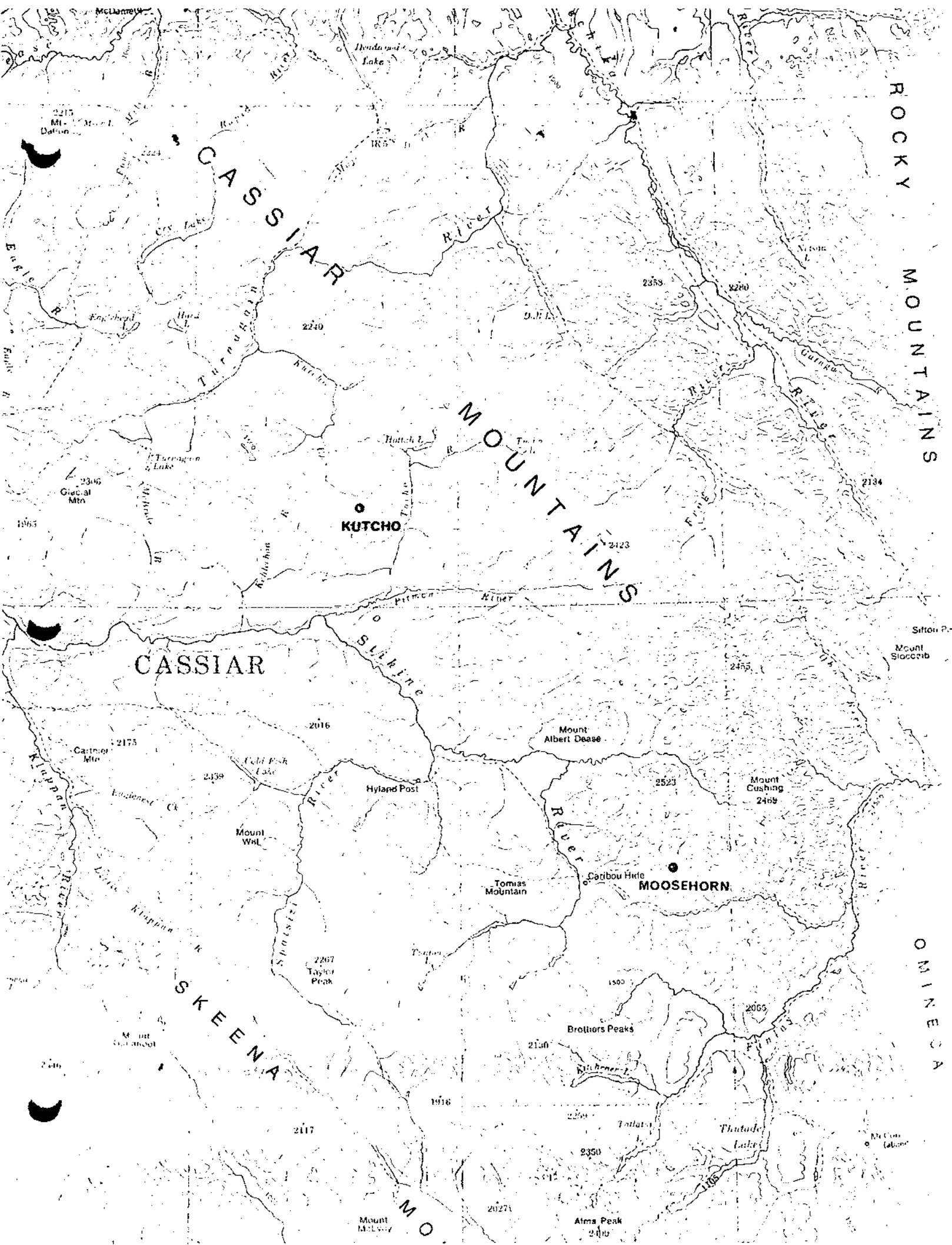
For and by

Sumac Mines Limited

January, 1974

Department of	
Mines and Petroleum Resources	
ASSESSMENT REPORT	
NO.	4863 MAP

T. R. Allen
31/1/74



ROCKY MOUNTAINS

CASSIAR

MOUNTAINS

CASSIAR

SKEENA

OMINECA

KUTCHO

MOOSEHORN

Mount McEwen

Alma Peak

McDon Lake

2215 Mt. Dalton

Hutch L.

Mount Albert Dease

Mount Cushing 2469

Thomas Mountain

Brotters Peaks

Kilbuck L.

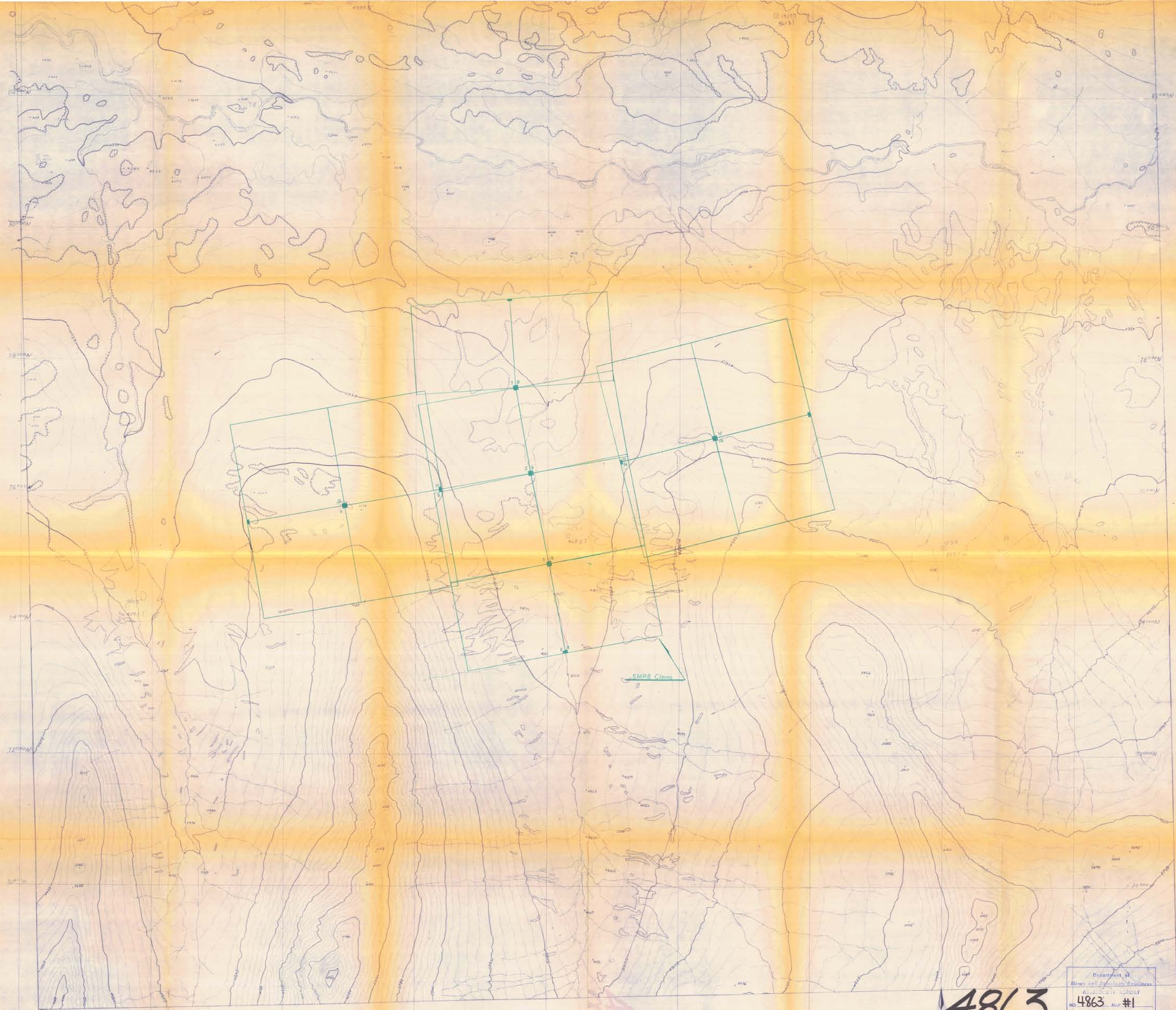
Thutode Lake

Sifton P. Mount Stoccrib



Department of
Mines and Geological Resources

NO. **4863** MAP **#2**



4863
M1

Department of
Mines and Technical Surveys
PROJECT # 4863
NO 4863 MAP #1

SUMITOMO METAL MINING CANADA LTD
KUTCHO CREEK
PRELIMINARY RECONNAISSANCE TYPE MAPPING

McElhanney
Surveying &
Engineering Ltd.
28 DEC 1973
09798-E
1 of 1