

# 4897

92I/11E

GEOLOGICAL REPORT ON DIAMOND DRILL HOLE

RAF 5-1, RAF 5 MINERAL CLAIM

KAMLOOPS MINING DIVISION

N.T.S. 92-I-11 50°31'N, 121°06'W

LORNE MINING CORP. LTD.

U. Paltser,

January 1974

Department of	
Mineral and Petroleum Resources	
ATLAS AND REPORT	
NO. 4897	MAP

## Table of Contents

	<u>Page</u>
Summary	1
Introduction	1
Location & Access	1 & 2
Geological Description of Diamond Drill Hole RAF 5-1	2
Conclusions and Recommendations	

## Appendicies

- I List of Personnel and Costs
- II Statement of Qualifications

## Maps and Illustrations

- #1 Fig. 1 Location Map (Scale 1:50,000')
- #2 Fig. 2 Drill hole Location (1" = 530')
- #3 Fig. 3 Section D.D.H. Raf 5-1 (1" = 100')  
(Drill log included)

Summary:

A drill hole on the Raf 5 claim in the Highland Valley area of British Columbia tested an I.P. chargeability anomaly situated near the perimeter of the Guichon batholith.

The drill core, which consisted of altered Skeena Quartz Diorite was completely lacking in sulphide mineralization and returned negligible copper and molybdenum values.

An increase in the intensity of alteration is thought to be the cause of the anomaly but the hydrothermal process did not include the introduction of copper bearing solutions.

Introduction:

In November 1973, a drill hole was completed on the Raf 5 claim owned by Lornex Mining Corp. Ltd. and located in the Highland Valley, British Columbia.

The drilling continued from November 13 to 19, 1973, under contract to Connors Drilling Ltd. of Vancouver, B.C., and was under the supervision of D.B. Petersen and U. Paltser.

One hole, to a depth of 401 feet, was drilled in an effort to explain an I.P. chargeability anomaly 500 feet wide, 1300 feet long and open to the west.

The anomaly is underlain by the Guichon batholith consisting of differentiated intrusive phases which have been proven to contain large deposits of copper-molybdenum mineralization. The presence of an unexplained anomaly in a favourable geological environment required a drill test.

Location and Access:

The property is located approximately 20 miles southeast of Ashcroft, B.C., and 5 miles NNW of the Lornex pit.

A gravel road which passes through the claim block provides excellent access from the highway.

Results of the Diamond Drilling Program:

The drill hole was collared on the flank of the chargeability anomaly and drilled at a dip of 45 degrees along azimuth 0 degrees. This orientation, though not aimed directly at the peak (Fig. 2), tested an area of moderately high chargeability (6-8 milliseconds) and provides an adequate evaluation and probable explanation for the response.

The only major rock type found in the core was Skeena Quartz Diorite displaying varying degrees and types of alteration which consequently effects the texture and appearance. (See attached drill log for details) In the intense propylitic zone in which epidote is diagnostic and hematite is common, the original mineralogy, colour and texture are undistinguishable. From 90 - 246 feet, abundant fractures in random orientation contain argillic alteration minerals and form a fragmental or brecciated texture.

Although alteration is very prevalent in the hole, the hydrothermal fluids seem to have been very deficient as a source for sulphides. Even pyrite which is usually peripheral in many deposits was absent.

Since the I.P. anomaly is not caused by sulphide mineralization, the changes in chargeability must be attributed to changes in the characteristics of the bedrock. Assuming that unaltered quartz diorite has a chargeability range from 2.0 - 4.0 milliseconds, the occurrence of alteration minerals must effect the physical characteristics and thereby produce "anomalous" results.

Conclusions and Recommendations:

The I.P. anomaly is not caused by sulphide mineralization but may reflect the degrees of alteration and fracturing in the Skeena Quartz Diorite.

Since alteration can be a measure of hydrothermal activity, the area does warrant further consideration particularly since outcrop is not abundant and geophysics is not infallible. However, no further work or follow-up drilling can be recommended for the anomaly.

  
\_\_\_\_\_  
U. Paltser

  
\_\_\_\_\_  
W. F. Gilmore, P. Eng.,

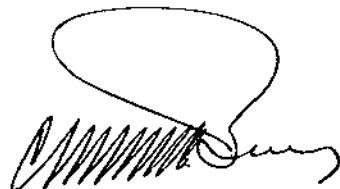
APPENDIX I

List of Personnel and Costs

<u>Employee</u>	<u>Position</u>	<u>Days Worked</u>	<u>Cost/Wage Per Day</u>	<u>Total</u>
D.B. Petersen	Sr. Geologist	Nov. 12, 13, 14 (3)	\$106	\$318
U. Paltser	Geologist	Nov. 19 (1)	\$ 80	\$ 80
E. Milne	Surveyor	Oct. 30 (1)	\$ 57	\$ 57
L. Brown	Rodman	Oct. 30 (1)	\$ 50	\$ 50

<u>Item</u>		<u>Rate</u>	<u>Total</u>
Drillers Accomodation	6 days X 4 men (24)	\$12 man-day	\$228
Other Personnel Accomo.	6 days X 1 man ( 6)	\$12 " "	\$ 72
Truck Rental	5 days	\$12.40/day	\$ 62
4 assay samples		\$ 8/sample	\$ 32
Diamond Drilling Costs	401' NQ wireline	\$ 8.44/ft.	<u>\$3,384.44</u>
Grand Total =			\$4,283.44

Declared before me at the city  
Vancouver, in the  
Province of British Columbia, this 4  
March 1974, A.D.



Jan [Signature]  
A Commissioner for taking Affidavits within British Columbia or  
A Notary Public for the Province of British Columbia

Sub-Mining Recorder

APPENDIX II

Statement of Qualifications

1. I am a graduate of Queen's University in Kingston, Ontario, where I obtained a B.Sc. in Applied Science (Geological Engineering).
2. Since graduating in 1970, I have been employed by Rio Tinto Canadian Exploration, as a field geologist in Quebec, Ontario, Saskatchewan and most recently in British Columbia.
3. During my employment with Rio Tinto, I have supervised and compiled reports on geological mapping and drilling projects.

U. Paltser

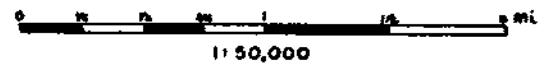
U. Paltser.

50°35'

34'

33'

32'



Department of  
Mines and Technical Resources  
ASSESSMENT REPORT  
NO. **4897** MAP #1

HIGHLAND

VALLEY

RAF  
GROUP

TAM  
GROUP

LR. 12

*W. P. ...*

LORNEX MINING CORPORATION LTD.

# LOCATION MAP

*W. P. ... Jan 15/74*

JAN. 1974

U. P.

Fig. 1

01.121

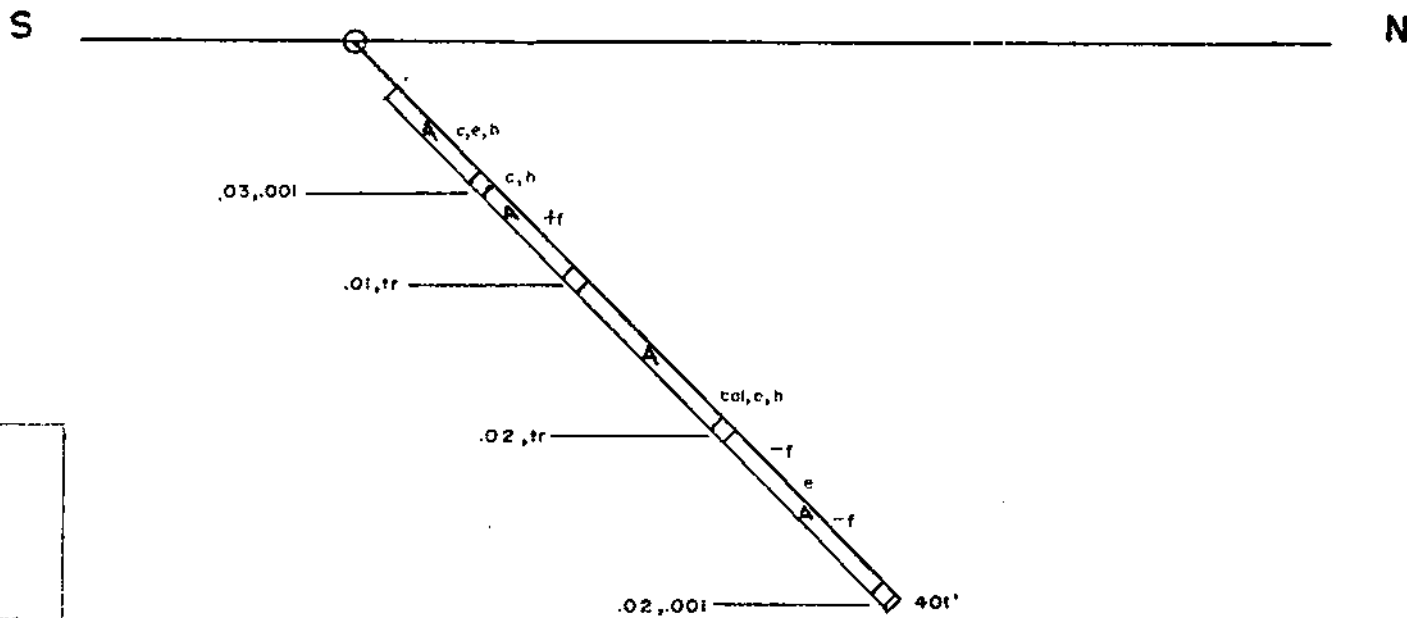
.60

.80

.06

.05

.04



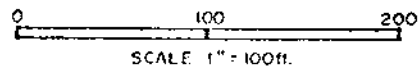
DEPARTMENT OF  
 MINES AND TECHNICAL SURVEYS  
 ASSOCIATION OF M.T.S.  
 NO. 4897  
 MAP #3

LEGEND

**A** SKEENA QUARTZ  
DIORITE

c chlorite  
 cal calcite  
 e epidote  
 h hematite  
 f fracturing

ASSAYS  
%Cu, %Mo



LORNEX MINING CORPORATION LTD.

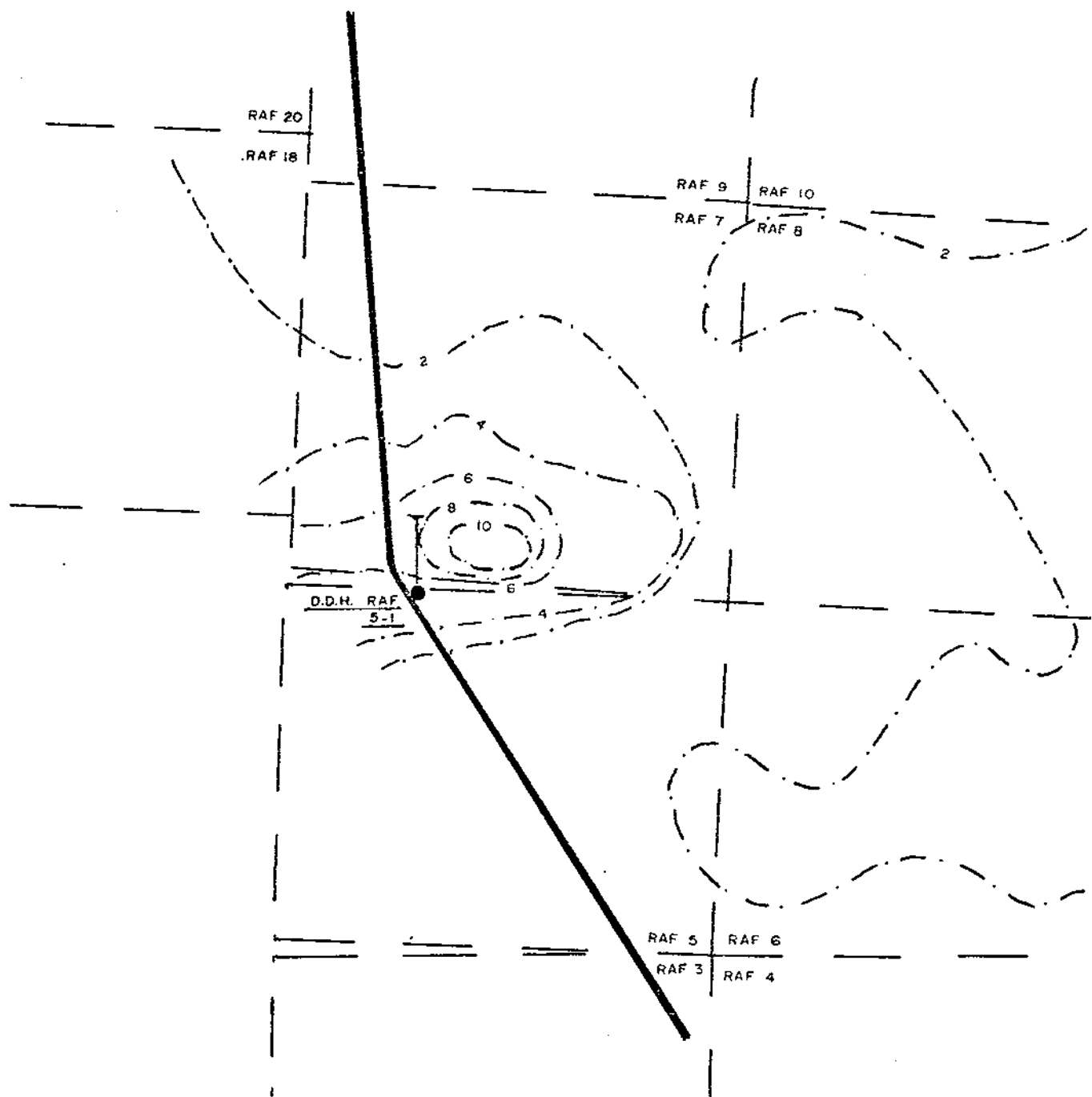
SECTION  
D.D.H. RAF 5-1

*W. Patten Jan 15/74*

*W. Patten*

JAN. 1974 U.P.

Fig. 3



Department of  
 Mines and Technical Resources  
 ASSESSMENT REPORT  
 NO. **4897** MAP **#2**

*W. Pittmore*

LEGEND

- D.D.H. Collar
- - - I.P. Chargeability Contour (millisec., 200' spacing)
- Claim Line
- Gravel Road

LORNEX MINING CORPORATION LTD.

DRILL HOLE LOCATION

*Ulo Pallesen Jan 15/74*



