

STELLAC EXPLORATIONS LTD.

GERMANSEN LANDING,
BRITISH COLUMBIA

PROSPECTOR'S REPORT

ON SUSIE #4 CLAIM

OF THE SUSIE CLAIM GROUP

6 MILES NW OF AIKEN LAKE

OMINECA MINING DIVISION

4900

by

DOUGLAS STELLING

Prospector

94C/5W

February 14, 1974

Filmed

Department of	
Mines and Technical Resources	
ANALYTICAL REPORT	
NO. 4900	MAP

- #1 Index map
- #2 Property "
- #3 Chip Sample & Prospecting Traverse
- #4 Claim map



Mines and Geology Resources

ASSESSMENT REPORT

INDEX MAP

SUSIE GROUP

NO.

4900

MAP

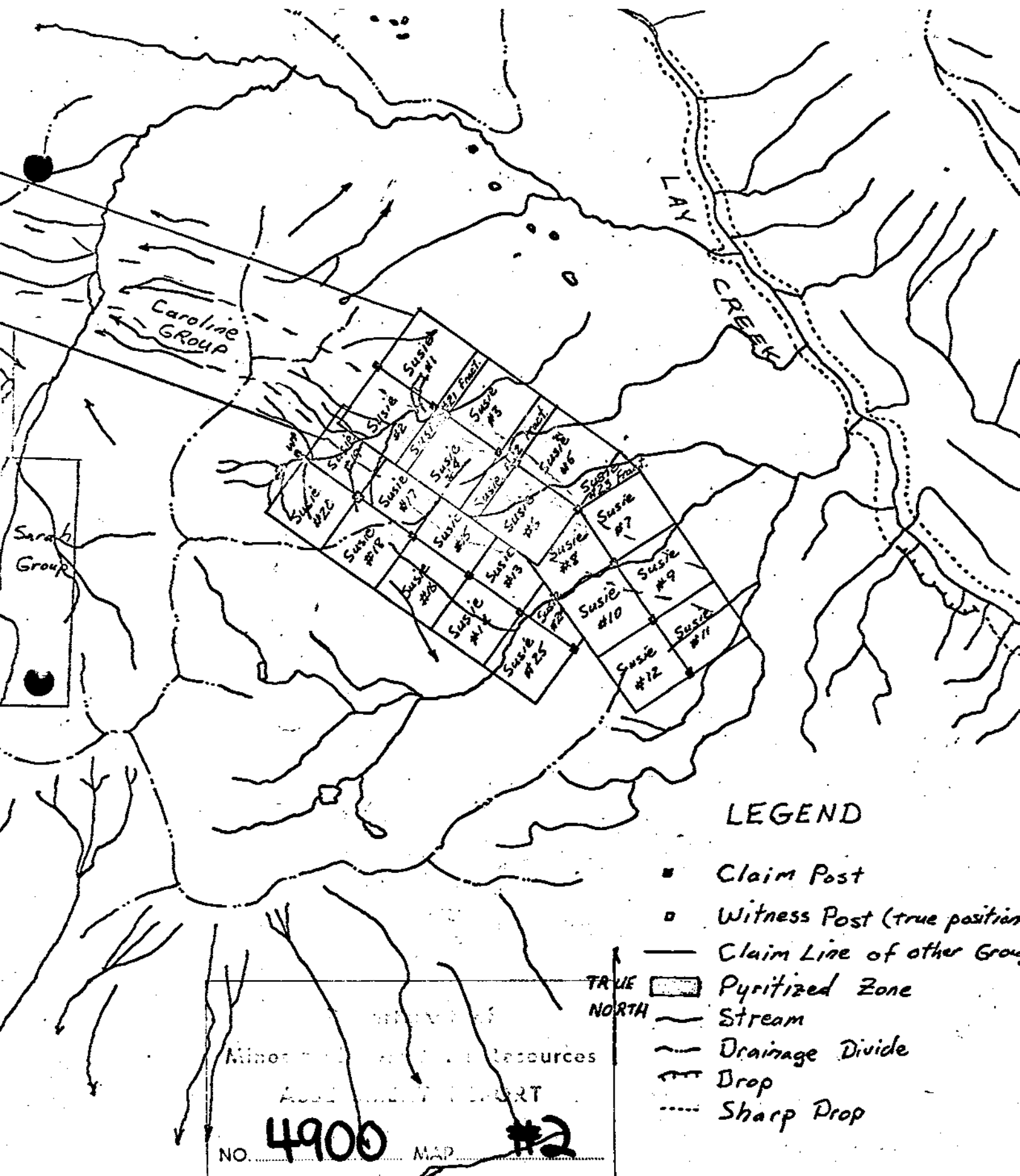
#1

Drawn By: D. Stelling

February 14, 1974

N.T.S. 94C

Scale: 1" = 4 miles



LEGEND

- Claim Post
- Witness Post (true position)
- Claim Line of other Group
- ▨ Pyritized Zone
- ~ Stream
- ~ Drainage Divide
- Drop
- Sharp Drop

TRUE NORTH

Minor Resources

ADJACENT PROPERTY

NO. **4900** MAP **#2**

INTRODUCTION

The located claims on which assessment credits are requested are as follows:

<u>Name of Claim</u>	<u>Record Nos.</u>	<u>Credit Requested</u>
Susie #15	121910	1 year
Susie #17-20	121912-15	1 year each
Susie #21-23 Fractions	121916-18	1 year each

The chip samples were obtained on September 7 and 8, 1973. This work was performed by Mr. Doug Stelling of Germansen Landing and Mr. Charles Norwich of Manson Creek, B.C. The assaying was done by Min-En Laboratories Ltd. of North Vancouver, B.C. and Can Test Ltd. of Vancouver, B.C.

Total expenditures on the claim group amount to \$830.00 for this project, for which \$800.00 is being requested to be applied toward assessment work credits.

PROPERTY AND OWNERSHIP

The Susie Group comprises^{of} a contiguous group of 22 full size claims and 3 fractions as follows:

<u>Name of Claim</u>	<u>Record Nos.</u>	<u>Date Recorded</u>
Susie #1-12 inclusive	113402-13	July 21, 1972
Susie #13-20 inclusive	121908-15	April 13, 1973
Susie #24 & 25	121919-20	April 13, 1973
Susie #21-23 Fractions	121916-18	April 13, 1973

These claims are all owned by the writer, Mr. Doug Stelling of Germansen Landing, B.C.

LOCATION AND ACCESS

The Susie Group of mineral claims is located about 6 miles northwest of Aiken Lake, B.C. in the Omineca Mining Division (N.T.S. Sheet 94 C/5W). This claim group covers the former Granite Basin showing owned and operated by Cominco in the 1930's. It covers steep terrain around the timber line, on the south side of the Lay Creek Valley between elevations of 4,000 and 6,000 feet above sea level. The geographical coordinates are: 56° 30' N, 125° 50' W.

HISTORY

The Consolidated Mining & Smelting Co.. of Canada (Cominco Ltd.) began work on the Granite Basin Property in 1935. Initially hundreds of channel samples were taken across solid outcrops. Following this initial work, interesting results were obtained in both a surface trench and in an adit tunnel, some 90 feet directly below (see maps, figures 2 & 3). Douglas Lay sampled the tunnel in 1939 for the Provincial Department of Mines and reported 0.2 oz. Au across 40 feet.

Stellac Exploration Ltd. (Owned by the writer) staked this property in 1972. Following the recommendations of Dr. D. L. Cooke, consulting geologist, Stellac carried out a program of rock chip sampling and soil sampling over parts of the property during the summer of 1972.

This report represents the work recommended by G. G. Potter in the report covering the above mentioned survey. Since this work was completed, a personal letter has been received from Mr. Emil Bronlund, which has substantially shed new light on the genesis and tenure of the gold and silver bearing rocks on these claims.

GEOLOGY

The property is underlain by volcanic flows and clastics and fine sediments of the Takla Group and by a series of porphyritic diorite dykes. These dykes are from 50 to 150 feet thick and show a sub-parallel northwesterly strike from the crest of the mountain ridge down the steep slopes toward the basin valley. They are for the most part heavily pyritized and contain no other visible sulfides

This property was originally staked by Consolidated Mining & Smelting Co. of Canada on a heavily pyritized system of intrusive dykes, which outcrop across a width of more than 1500 feet. Originally it was believed that the mineralization was related to these intrusive dykes. However, subsequent work done by Mr. E. Bronlund has indicated that the mineralization is related to 3 sparsely pyritized, post-intrusive shear zones. Gold and silver assays of interest have been associated with these shear zones.

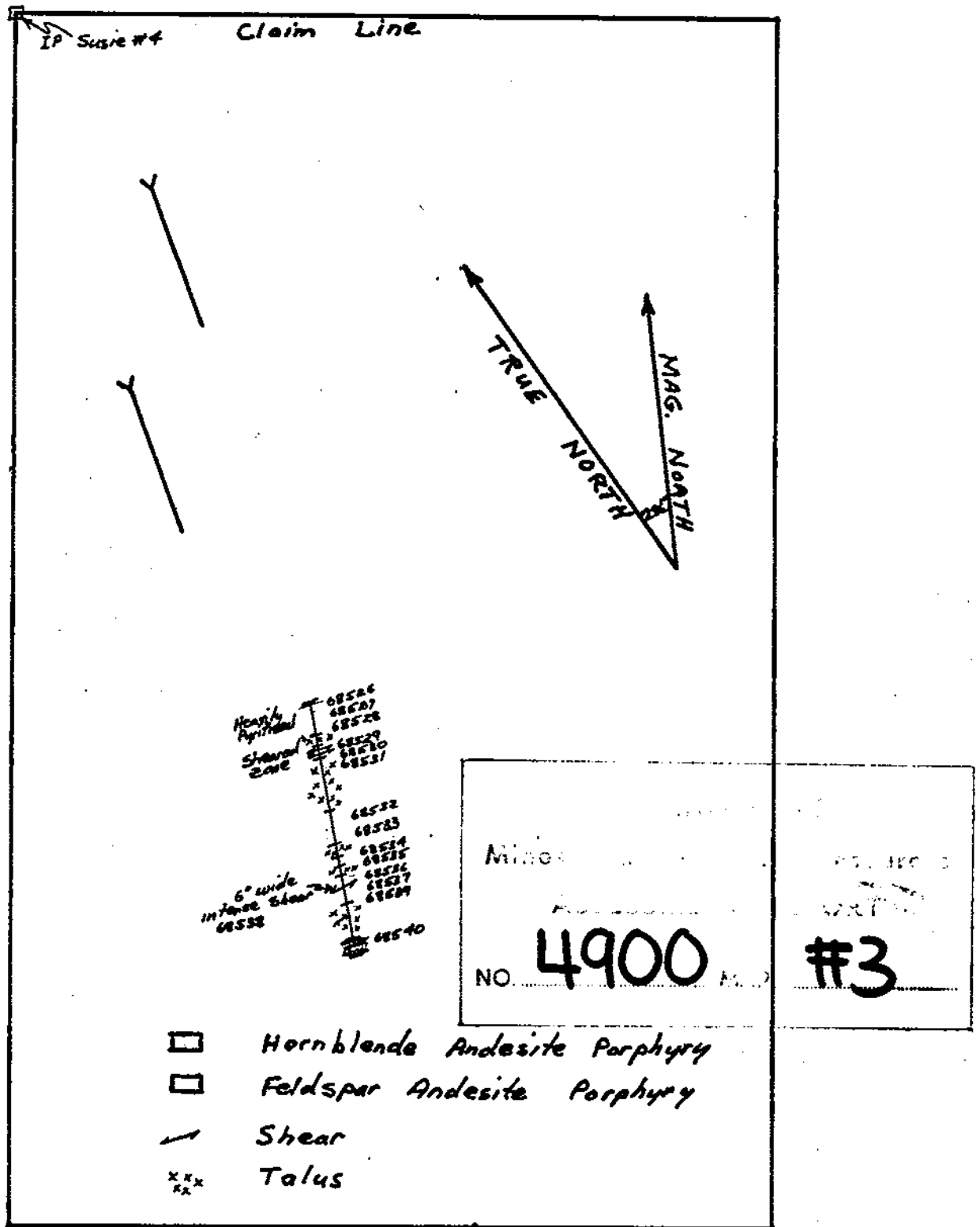
The samples obtained on this survey were primarily of feldspar andesite porphyry composition. The last sample was obtained from a hornblende andesite porphyry. The greatest mineralization seems to be related to a system of shears outcropping across 22 feet in the feldspar andesite porphyry rocks.

ROCK CHIP SAMPLING

On September 8 and 9, 1973, 15 chip samples were collected across 65 feet. A total of 156 feet was prospected and sampled during these two days. The samples were collected by obtaining a continuous number of chips, almost representing a channel sample of about two inches in width. The samples ranged in length from 6 inches to 10 feet. All sample collection sites were clearly marked by red flagging tape and all samples were placed in plastic bags 9X12 inches in size and were marked according to the sample number. The assay work was completed by Min-En Laboratories Ltd. of 705 W. 15 St., North Vancouver, B.C. and Can Test Ltd. of 1650 Pandora St., Vancouver, B.C.

RESULTS

The results of the chip sampling survey indicate that the greatest mineralization is associated with a system of shearing. The very helpful letter from Mr. Bronlund substantiates this conclusion and offers further targets for exploration. The future exploration work on the property will be directed toward exploring these shear zones and following up some anomalies within the soil covered portion of the claims, which were delineated in a previous survey.



Chip Sample and Prospecting Traverse
Susie #4 Mineral Claim
Scale 1" = 100'

February 12, 1974

MIN-EN LABORATORIES LTD.

705 WEST 15TH STREET
 NORTH VANCOUVER, B.C.
 Phone: 980-5814

Certificate of Assay

TO: Doug Stelling

PROJECT No. _____

Bag #25,

DATE Dec 14/73.

Fort St. James, B.C.

File No. 661

SAMPLE No.	PER % Ag	Au		
	oz/ton	oz/ton		
68526	.07	.004		
27	.06	.003		
28	.07	.003		
29	.13	.008		
30	.18	.012		
31	.14	.013		
32	.07	.001		
33	.09	.001		
34	.08	.001		
35	.10	.002		
36	.07	.002		
37	.06	.001		
38	.08	.001		
39	.06	4.001		
68540	.08	4.001		

MIN-EN Laboratories Ltd.

CERTIFIED BY Gilbert V. Henriouille



CAN TEST LTD.

To: MIN-EN Laboratories Ltd.
705 West 15th Street
North Vancouver, B.C.
Attention: Mr. John Barakso

1850 PANDORA STREET, VANCOUVER 6, B.C. • TELEPHONE 254-7278
 Telex 04-507737
**SEMI QUANTITATIVE SPECTROGRAPHIC
 ANALYSES CERTIFICATE**

File No. **6483 A**
 Date **January 15, 1974**

We hereby Certify that the following are the results of semi quantitative spectrographic analyses made on **Ore Pulp** samples submitted.

		1	2	3	4	5	Sample Identification
Aluminum	Al	8.	8.	8.			Sample 1: 68529 Sample 2: 68532 Sample 3: 68537 Sample 4: Sample 5:
Antimony	Sb	ND	ND	ND			
Arsenic	As	ND	ND	ND			
Barium	Ba	0.3	0.2	0.1			
Beryllium	Be	ND	ND	ND			
Bismuth	Bi	ND	ND	ND			<p>Percentages of the various elements expressed in these analyses may be considered accurate to within plus or minus 35 to 50% of the amount present.</p> <p>Semi-quantitative spectrographic analytical results for gold and silver are normally not of a sufficient degree of precision to enable calculation of the true value of ores. Therefore, should exact values be required, it is recommended that these elements be assayed by the conventional Fire Assay Method. Quantitative and Fire Assays may be carried out on the retained pulp samples.</p> <p>Silicon, aluminum, magnesium, calcium and iron are normal components of complex silicates.</p> <p>MATRIX — Major constituent MAJOR — Above normal spectrographic range TRACE — Detected but minor amounts N.D. — Not detected * — Suggest assay (above 0.3%)</p> <p>All results expressed as <u>Per cent</u></p> <p>Note: Pulps retained one week.</p> <p>ALL REPORTS ARE THE CONFIDENTIAL PROPERTY OF CLIENTS. PUBLICATION OF STATEMENTS, CONCLUSION OR EXTRACTS FROM OR REGARDING OUR REPORTS IS NOT PERMITTED WITHOUT OUR WRITTEN APPROVAL. ANY LIABILITY ATTACHED THERETO IS LIMITED TO THE FEE CHARGED.</p> <p>CAN TEST LTD.</p> <p><i>J.K. Gil</i></p> <p>Spectroscopist</p>
Boron	B	ND	ND	ND			
Cadmium	Cd	ND	ND	ND			
Calcium	Ca	1.	5.	5.			
Chromium	Cr	0.01	0.03	0.003			
Cobalt	Co	ND	ND	ND			
Copper	Cu	0.007	0.007	0.007			
Gallium	Ga	ND	ND	ND			
Gold	Au	Trace	Trace	Trace			
Iron	Fe	5.	5.	5.			
Lead	Pb	ND	ND	ND			
Magnesium	Mg	2.	1.	3.			
Manganese	Mn	0.1	0.1	0.1			
Molybdenum	Mo	0.001	ND	ND			
Niobium	Nb	ND	ND	ND			
Nickel	Ni	0.001	0.003	0.003			
Potassium	K	5.	2.	2.			
Silicon	Si	Matrix	Matrix	Matrix			
Silver	Ag	Trace	Trace	Trace			
Sodium	Na	1.	5.	5.			
Strontium	Sr	0.01	0.03	0.03			
Tantalum	Ta	ND	ND	ND			
Thorium	Th	ND	ND	ND			
Tin	Sn	ND	ND	ND			
Titanium	Ti	0.5	0.4	0.5			
Tungsten	W	Trace	Trace	Trace			
Uranium	U	ND	ND	ND			
Vanadium	V	0.01	0.007	0.007			
Zinc	Zn	ND	ND	ND			

STATEMENT OF EXPENDITURES
ON THE SUSIE CLAIM GROUP
6 MILES NW OF AIKEN LAKE
OMINECA MINING DIVISION

Rock Chip Sampling and Prospecting September 8 & 9, 1973

D. Stelling, field manager, 2 days @\$60.00	\$120.00
C. Norwich, field assistant, 2 days @ \$40.00	80.00

Assaying

15 samples analyzed for Au, Ag @ \$6.00	90.00
3 samples analyzed Spectrochemically @ \$20.00	60.00

Transportation (truck to Aiken Lake and one day each

packing in and out from property) 150.00

Camp Maintainance 4 days @ \$20.00/day 80.00

Preparation of maps and reports 250.00

TOTAL \$830.00

The above statement truly represents the amounts expended on these claims.




CERTIFICATE

I, DOUGLAS STELLING, of Germansen Landing, British Columbia, Canada,

HEREBY CERTIFY:

- 1) That I am a prospector and have been prospecting since 1969 in the Omineca Mining Division.
- 2) That I have attended the University of Arizona, College of Mines, from 1962 to 1965, where I majored in Geological Engineering.
- 3) That I am a member of the B.C.-Yukon Chamber of Mines.
- 4) That I am owner and operator of the company Stellac Exploration Ltd. , which was incorporated by myself for the purpose of mineral exploration in the province of British Columbia.

DATED this 14th day of February, 1974, at Germansen Landing, B.C.


DOUGLAS STELLING
Prospector

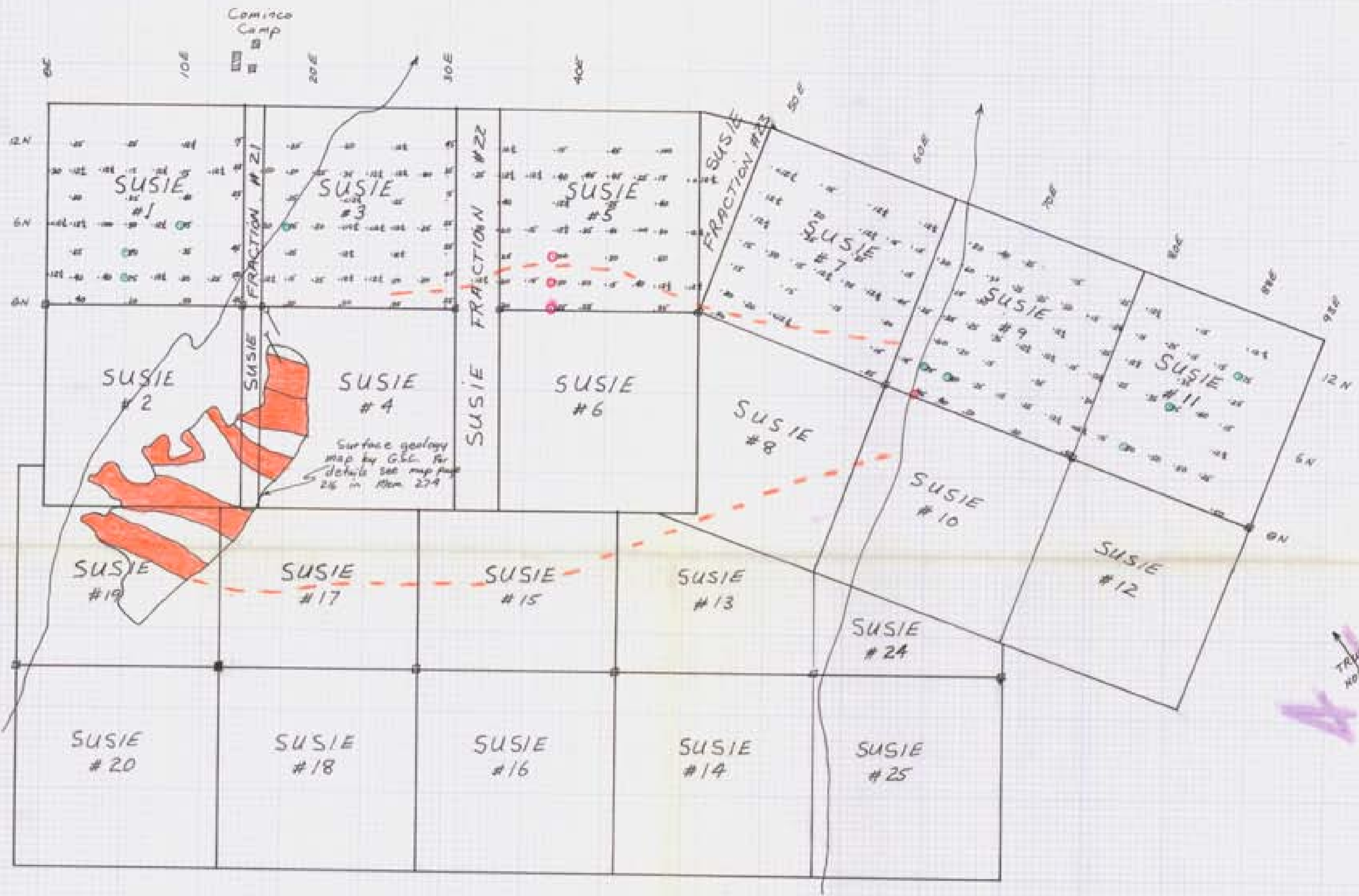


FIG 5

SUSIE GROUP

Department of
 Mines and Geological Resources
 ADDRESS: 4703 ST
 NO. 4487 #5

Zinc Geochemistry

Scale 1" = 600'

To accompany geochemical
 report on the Susie claims
 by R.G. Totten dated
 July 10, 1978

Robert Totten

LEGEND

- Pyrite Mineralization
- Limit of Rusty Zone
- Soil Sample Site
- ~ Creek
- Adit
- True Position of Claim Post
- Claim Post
- Building

4487-101

4487
M7

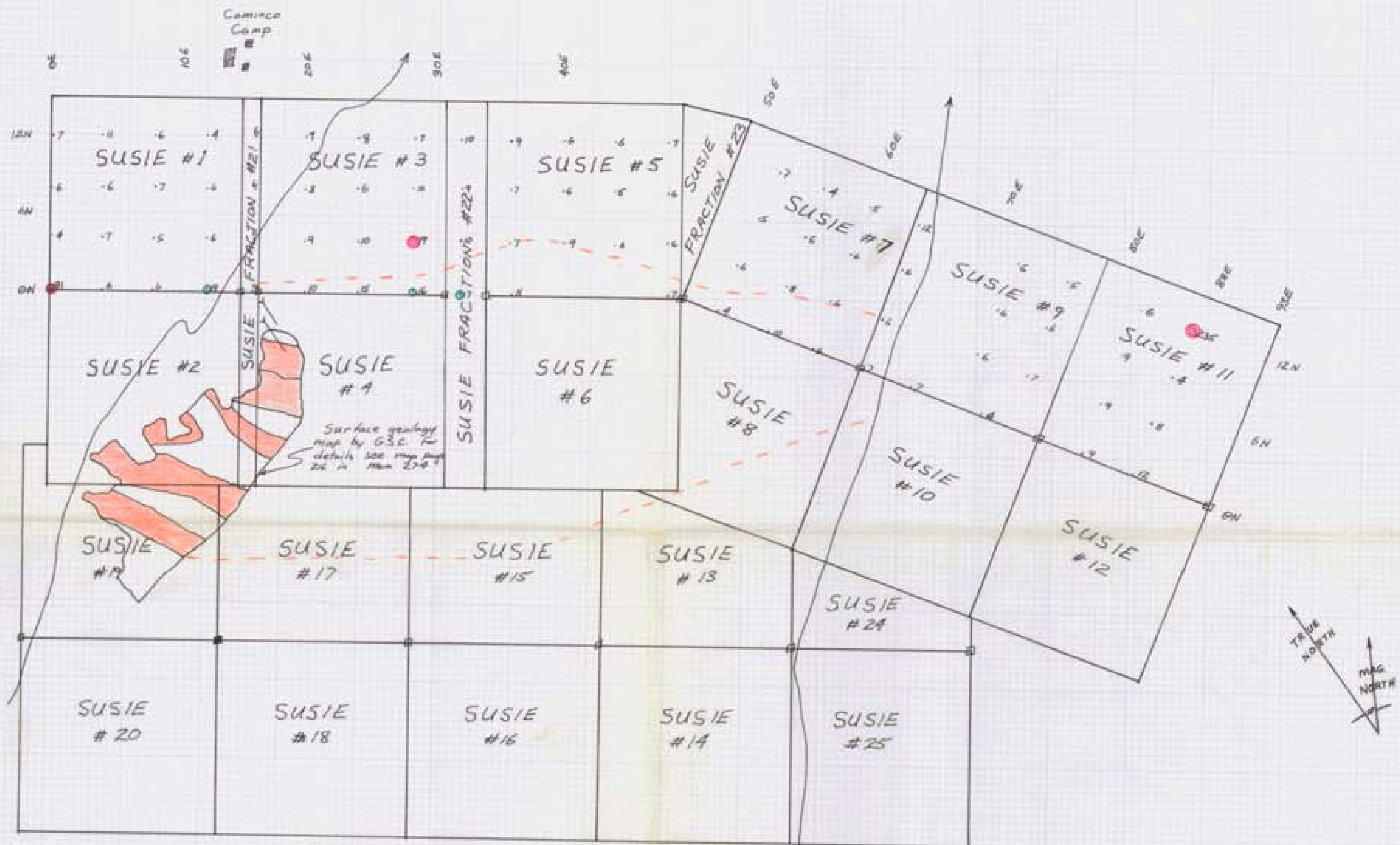


FIG 7

SUSIE GROUP

To accompany geochemical report on the Susie claims by R.A. Fisher dated July 10, 1973

R.A. Fisher

LEGEND

- Pyrite Mineralization
- - - Limit of Rusty Zone
- Soil Sample Site
- ~ Creek
- Adit
- True Position of Witness Post
- Claim Post
- Building

Department of
Mineral and Technical Resources
ASSESSMENT REPORT
NO. 4487 M7 #7

Scale 1" = 600'

4487
M7

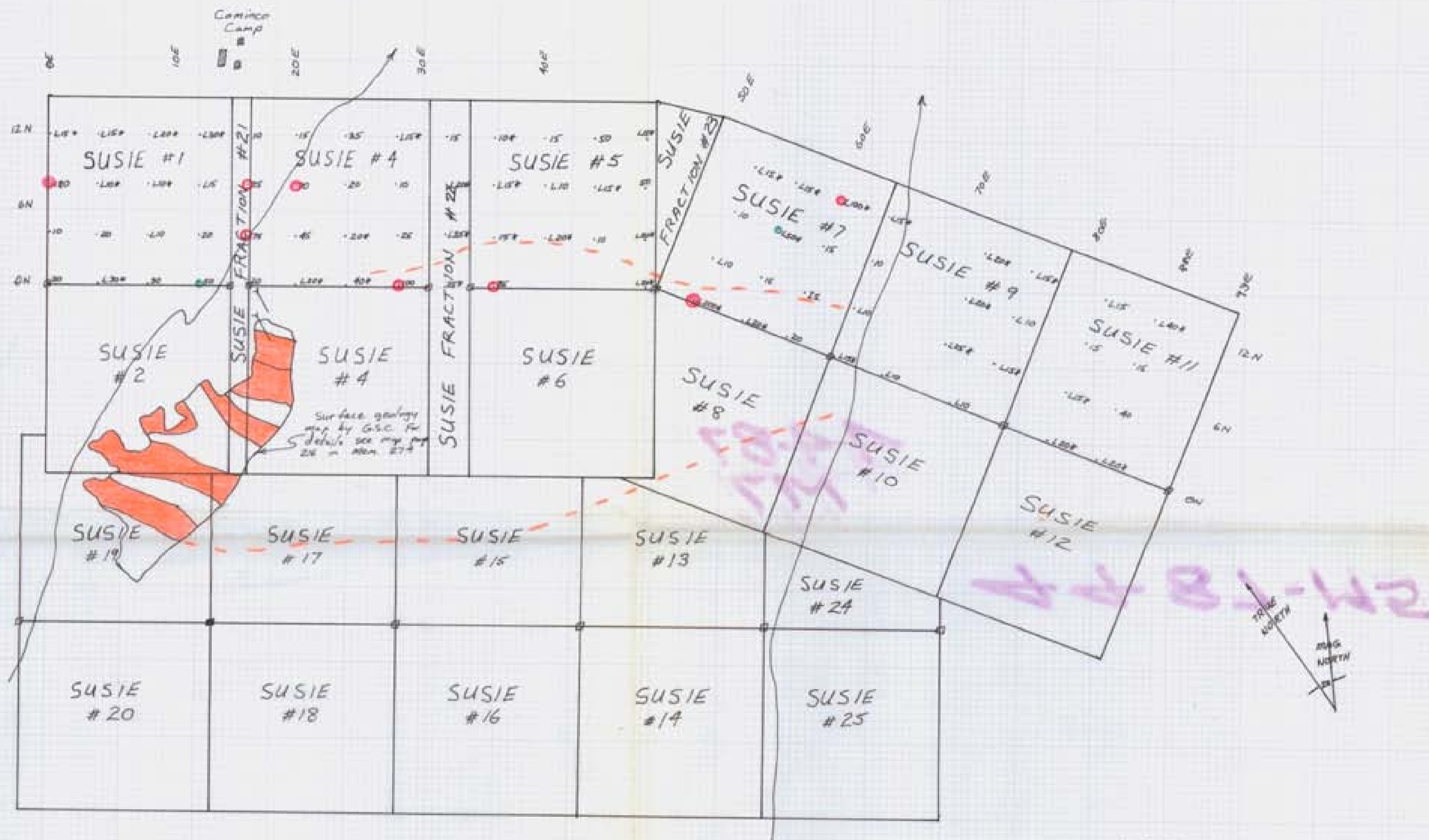


FIG 6

SUSIE GROUP

Department of
 Mines and Geoscience
 Gold Geochemistry
 NO 4487 M6 #6

Scale 1" = 600'

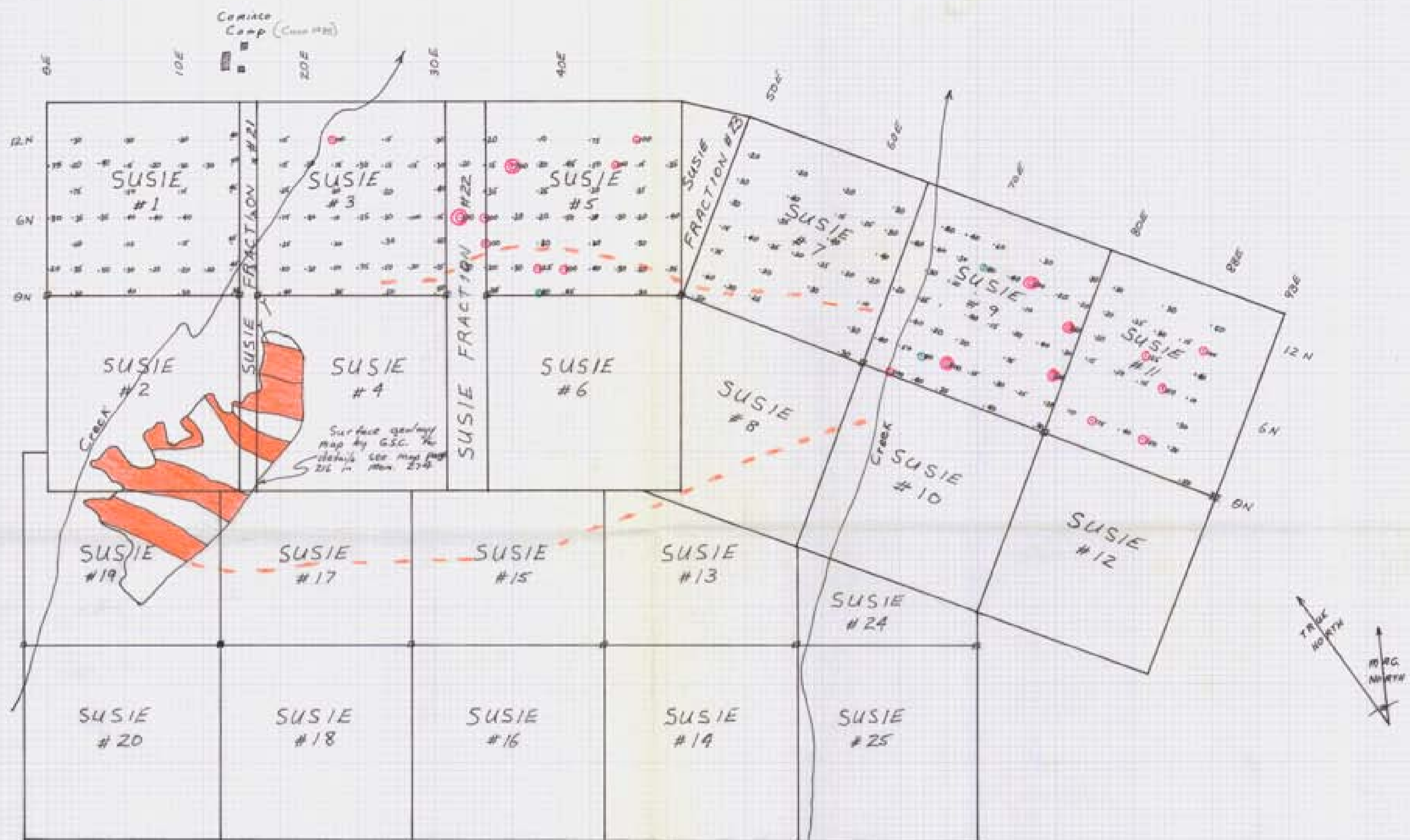
To accompany geological report
 on the Susie claims by R.G. Fisher
 dated July 10, 1973

R.G. Fisher

LEGEND

- Pyrite Mineralization
- Visible Rusty Zone
- Soil Sample Site
- L Denotes Less Than
- * Denotes Detection Limit
- ~ Creek
- Adit
- Claim Post
- ▣ Building

4487
M6



LEGEND

- Pyrite Mineralization
- Limit of Rusty Zone
- Soil Sample Site
- Creek
- Adit
- True Position of Witness Post
- Claim Post
- Building

Department of
Mines and Petroleum Resources
ASSESSMENT REPORT
NO. 4487 MAP #4

Fig 4
SUSIE GROUP
Copper Geochemistry

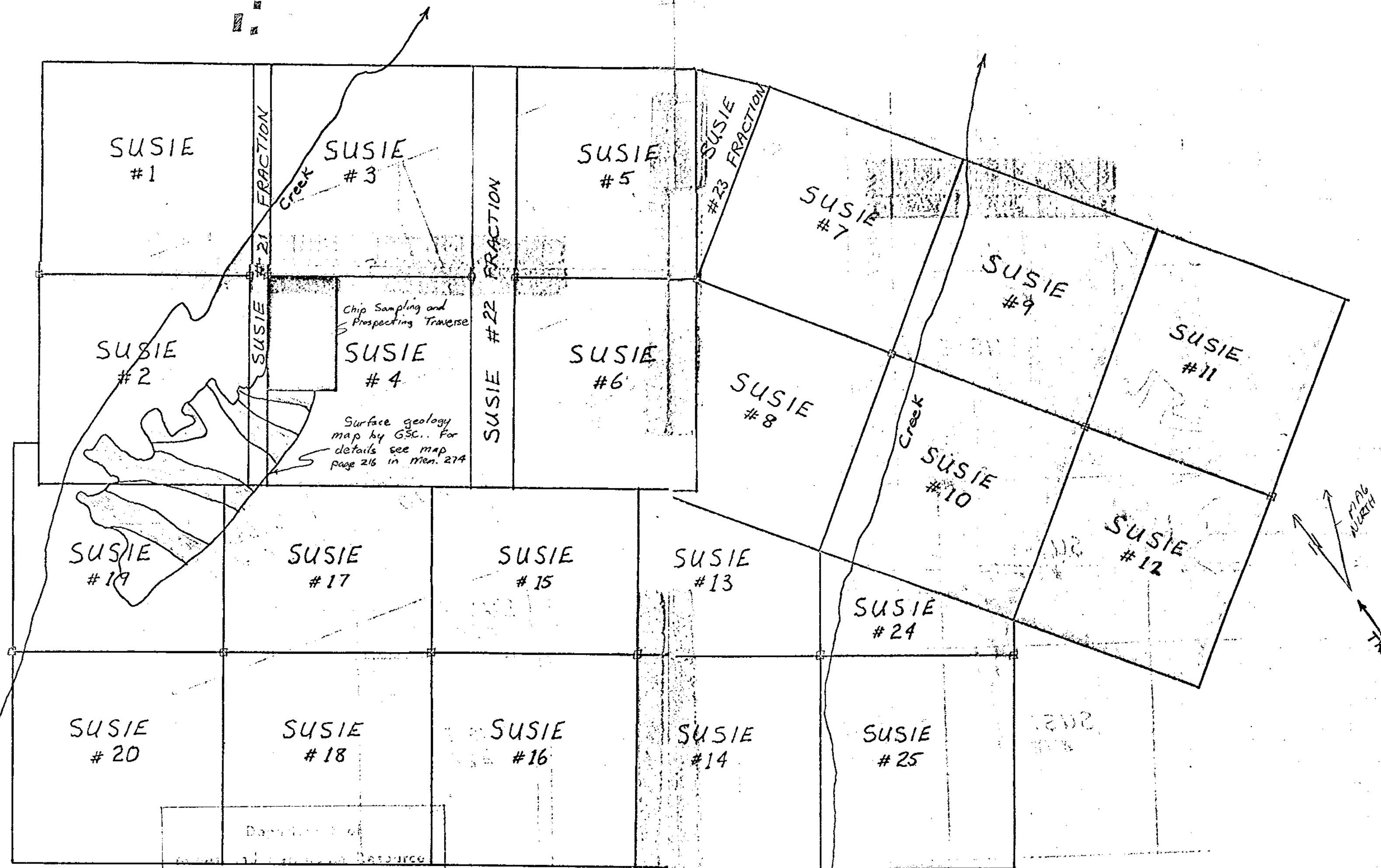
Scale 1" = 600'

To accompany geotechnical report on the Susie claims by R.G. Potts dated July 10, 1973

R.G. Potts

4487-174

old
COMINCO
Camp



ASSESSMENT REPORT
NO. **4900** MAP **#4**

DRAWN BY DORA STELLING
February 17, 1974

LEGEND

- Pyrite Mineralization
- Creek
- Adit
- Claim Post
- Building

SUSIE GROUP MINERAL CLAIMS

4900

MA

Scale: 1" = 600'

N^o 68537OFFICE
COPY

TO: COAST ELDRIDGE

PROFESSIONAL SERVICES DIVISION
Warnock Hersey International Ltd.

125 E. 4th AVE., VANCOUVER 10, B.C.

Date Sept 9, 1973Project Susie GroupDescription SUR-12contiguous w/ SUR-11
and across 6 feet

Assayed for _____

N^o 68535OFFICE
COPY

TO: COAST ELDRIDGE

PROFESSIONAL SERVICES DIVISION
Warnock Hersey International Ltd.

125 E. 4th AVE., VANCOUVER 10, B.C.

Date Sept 9, 1973Project Susie GroupDescription SUR-10Contiguous w/ SUR-9
and across 3 feet

Assayed for _____

N^o 68538OFFICE
COPY

TO: COAST ELDRIDGE

PROFESSIONAL SERVICES DIVISION
Warnock Hersey International Ltd.

125 E. 4th AVE., VANCOUVER 10, B.C.

Date Sept 9, 1973Project Susie GroupDescription SUR-14 iswith SUR-13 but
is 6' at school
and mostly broken material

Assayed for _____

N^o 68534OFFICE
COPY

TO: COAST ELDRIDGE

PROFESSIONAL SERVICES DIVISION
Warnock Hersey International Ltd.

125 E. 4th AVE., VANCOUVER 10, B.C.

Date Sept 9, 1973Project Susie GroupDescription SUR-9taken 4' at 525°
from SUR-8 across
6 feet

Assayed for _____

N^o 68539OFFICE
COPY

TO: COAST ELDRIDGE

PROFESSIONAL SERVICES DIVISION
Warnock Hersey International Ltd.

125 E. 4th AVE., VANCOUVER 10, B.C.

Date Sept 9, 1973Project Susie GroupDescription SUR-13Contiguous w/ SUR-12
and across 4 feet

Assayed for _____

N^o 68536OFFICE
COPY

TO: COAST ELDRIDGE

PROFESSIONAL SERVICES DIVISION
Warnock Hersey International Ltd.

125 E. 4th AVE., VANCOUVER 10, B.C.

Date Sept 9, 1973Project Susie GroupDescription SUR-11Taken 6' at 525°
from SUR-10 across
5 feet

Assayed for _____

N^o 68540OFFICE
COPY

TO: COAST ELDRIDGE

PROFESSIONAL SERVICES DIVISION
Warnock Hersey International Ltd.

125 E. 4th AVE., VANCOUVER 10, B.C.

Date Sept 9, 1973Project Susie GroupDescription SUR-15silicified andesite
(heavily pyritic)
21 feet from SUR-13 across 6'

Assayed for _____

N^o 68530 OFFICE COPY

TO: COAST ELDRIDGE
PROFESSIONAL SERVICES DIVISION
Warnock Hersey International Ltd.

125 E. 4th AVE., VANCOUVER 10, B.C.

Date Sept. 9, 1973

Project Sasie Group

Description SUR-5

Continuous w/ SUR-4

6' across 5' long

Assayed for _____

N^o 68526 OFFICE COPY

TO: COAST ELDRIDGE
PROFESSIONAL SERVICES DIVISION
Warnock Hersey International Ltd.

125 E. 4th AVE., VANCOUVER 10, B.C.

Date Sept 8 1973

Project Sasie Group

Description SUR-1

6 feet

at base

2-3'

Assayed for _____

N^o 68531 OFFICE COPY

TO: COAST ELDRIDGE
PROFESSIONAL SERVICES DIVISION
Warnock Hersey International Ltd.

125 E. 4th AVE., VANCOUVER 10, B.C.

Date Sept 9, 1973

Project Sasie Group

Description SUR-6

Take continuous w/

SUR-5 across 6'

Assayed for _____

N^o 68527 OFFICE COPY

TO: COAST ELDRIDGE
PROFESSIONAL SERVICES DIVISION
Warnock Hersey International Ltd.

125 E. 4th AVE., VANCOUVER 10, B.C.

Date Sat Sept. 8, 1973

Project Sasie Group

Description SUR-2

Take continuous w/ SUR-1

5 feet long

Assayed for _____

N^o 68532 OFFICE COPY

TO: COAST ELDRIDGE
PROFESSIONAL SERVICES DIVISION
Warnock Hersey International Ltd.

125 E. 4th AVE., VANCOUVER 10, B.C.

Date Sept 9, 1973

Project Sasie Group

Description SUR-7

Take 36' S250W

from SUR-7 across

6 feet

Assayed for _____

N^o 68528 OFFICE COPY

TO: COAST ELDRIDGE
PROFESSIONAL SERVICES DIVISION
Warnock Hersey International Ltd.

125 E. 4th AVE., VANCOUVER 10, B.C.

Date Sept. 8, 1973

Project Sasie Group

Description SUR-3

Take continuous with

SUR-2, 10 feet long

Assayed for _____

N^o 68533 OFFICE COPY

TO: COAST ELDRIDGE
PROFESSIONAL SERVICES DIVISION
Warnock Hersey International Ltd.

125 E. 4th AVE., VANCOUVER 10, B.C.

Date Sept 9, 1973

Project Sasie Group

Description SUR-8

Continuous with SUR-7

across 3 feet

Assayed for _____

N^o 68529 OFFICE COPY

TO: COAST ELDRIDGE
PROFESSIONAL SERVICES DIVISION
Warnock Hersey International Ltd.

125 E. 4th AVE., VANCOUVER 10, B.C.

Date Sept. 8, 1973

Project Sasie Group

Description SUR-4 (UP)

Shard face in

Feldspar pebbles

Gap of 9' from SUR-3

Assayed for _____