

4952

DRILLING REPORT FOR TEDI RESOURCES LTD.

May 6, 1974.

92 I/3E

Department of  
Mines and Technical Assistance  
NO. **4952**

TEDI RESOURCES LTD.  
118-815 West Hastings St.  
Vancouver, B.C. V6C 1B4

ITEMIZED VALUATION OF WORK PERFORMED.

(a) Period worked:

Twenty (20) days of supervision from April 8, 1974 to April 28, 1974.

Ten (10) days for bulldozer operator from April 8, 1974 to April 18, 1974.

Twenty-eight (28) days for bulldozer from April 1, 1974 to April 28, 1974.

(b) Cost of supervision for 20 day period	= 20x\$50.00	= \$1,000.00
Cost of bulldozer operator	= 80 hrs. x \$8.00	= \$ 640.00
Cost of bulldozer rental for 1 month		= \$1,000.00

(c) Cost of drilling 491' of BQ hole.

Casing 114' x 15.00	= \$1,710.00
Core 377' x 8.50	= \$3,204.50

Total cost for twenty day period	= \$7,554.50
----------------------------------	--------------

---

LOCATION OF CORE STORAGE.

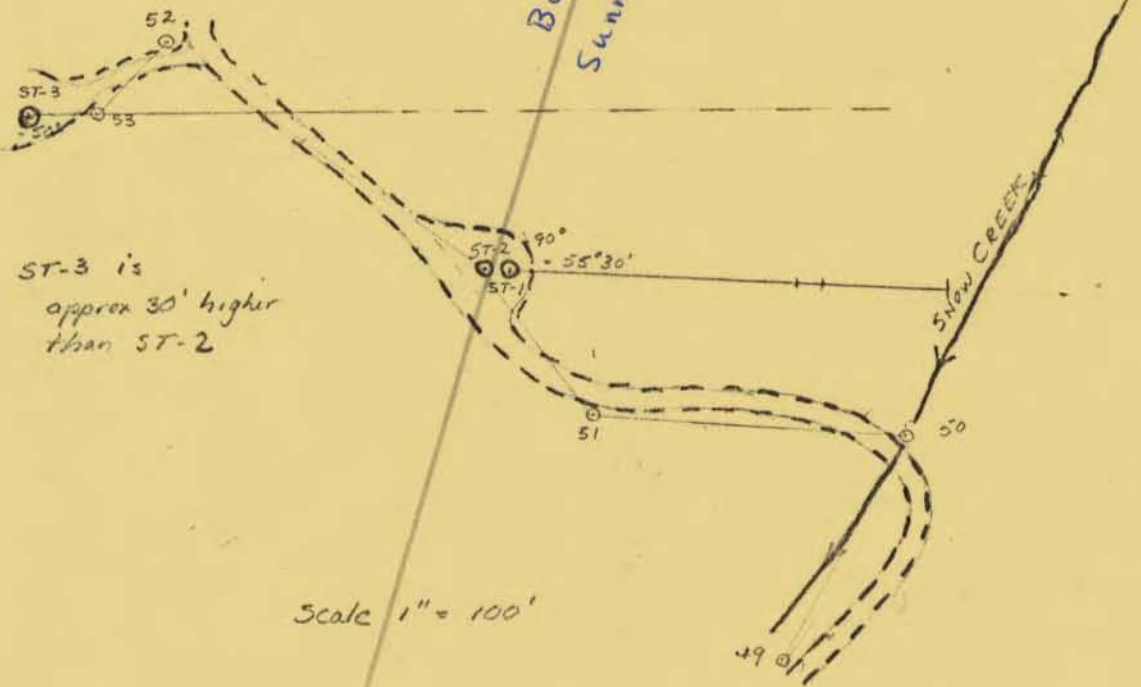
The core from ST-3 is stored in Vancouver, B.C. at 1661 Victoria Drive.





Location of D.D.H's  
ST-1, 2 & 3.

B.M. 25 19527  
Sunny Cave #1 10558M.



ST-3 is  
approx 30' higher  
than ST-2

Scale 1" = 100'

Department of  
Mines and Petroleum Resources  
ASSESSMENT REPORT  
NO. **4952** MAP **#2**

Van Silver Explorations Ltd.  
• INTERIM GRID

Property TEDI RESOURCES LTD.

Sheet No. 1 Hole No. ST#3

Project No. N.T.S.

Core Size: BQ

Lat. 11,564 N\*

Elev.

Dip -48°

Collared

Logged by: R.L.R.

Dep. 4,976 E\*

Depth 491'

Bearing 90°

Completed 28/4/74

ASSAYS

Footage	Rec'y	Rock Type/Alteration	Graphic Log	Mineralization/Structure	% Sulfides	Sample No.	Lt.				
0-114		Casing									
114-151		Grey-green med. gr. schistose volc. Some sections with purple tinge. Some siliceous sections.		Broken, with much limonite 146.5-149.							
151-152		Bleached, lighter coloured volc. section.									
152-161.5		Similar to 114-151.		Broken 160.6-161.5							
161.5-164		Grey-green silicified volc.									
164-178.3		Light grey, bleached-looking siliceous dyke. Possibly Rhyolite.		Some minor, very widely dispersed sulph. Occas. clay gouge on frac. Occas. narrow sulph. str. & blebs.							
178.3-194		Sim. to 161.5-164, but somewhat more schistose.									
194-226		Grey-green chloritic schist, mixed with bleached sections.		Some dissem. fine sulphides.							
226-232		Similar to above. Some epidote str.		But with increased dissem. sulph. Str. with galena 226.4.							
232-241		Schist, similar to above.		But less sulph. Str. with galena 237.6							
241-245		Bleached, lighter coloured section. Somewhat talcy.		Contains fair, fine dissem. sulphides.							
245-290		Grey-green, chloritic schist. Occas. qtz-carb. str. Occas. narrow grey-green f. gr. volc. sections.		With fair sulphides. Minor dissem. sulph.							
290-322		Mixture of grey-green f. gr. volc. & more schistose sections.		Minor sulphides.							

Van Silver Explorations Ltd.

Property TEDI RESOURCES LTD.

Sheet No. 2 Hole No. ST-3

Project No. N.T.S.

Core Size: BQ

Logged by: R.L.R.

Lat.	Elev.	Dip	Collared	ASSAYS			
Dep.	Depth	Bearing	Completed				
Footage	Rec'y	Rock Type/Alteration	Graphic Log	Mineralization/Structure	% Sulfides	Sample No.	Lt.
322-354.4	4	Grey-green f. to med. gr. volc.		Minor dissem. pyrite.			
354.4-359		Mostly bleached, white to greenish white f. gr. dyke. Very talcy & some clay gouge.		Minor dissem. fine sulphides.			
359-375		Similar to 322-354.4. But somewhat more schistose.		(368'-narrow str. with fine sulphides.)			
375-381		Grey-green med. gr. gabbro. Somewhat schistose.		More epidote, dissem. & in str.			
381-391.5	5	Grey-green, med. to f. gr. volc. Occas. narrow qtz-carb str.					
391.5-392.4		Bleached, light-coloured dyke & clay gouge.		Fair sulphides. Section ends in qtz-carb. vein.			
392.4-405.5		Grey-green f. gr. volc. 6" bleached, lighter grey-green dyke 402-402.5.		Occas. narrow epidote str. Occas. narrow qtz-carb str. - some with fair sulph.			
405.5-409		Silicified volc. Somewhat bleached appearance.					
409-412.5	5	Very light grey-green f. gr. dyke. Clay gouge 411.5		Some fine dissem. sulph.			
412.5 - 451.6		Grey-green med. to f. gr. volc. Occas. narrow Qtz-carb str. Ocas. schistose sec. 6" bleached section 420.5-421.		Occas. purple tinge due to narrow hematite str. Fair sulphides in clay gouge.			
451.6-453.7		Light grey-green, bleached-looking, dyke.		Good dissem sulph., especially in clay gouge at several points.			



ROBERT L. ROSCOE, P.ENG.  
4675 Skyline Drive,  
North Vancouver, B.C.

CERTIFICATE

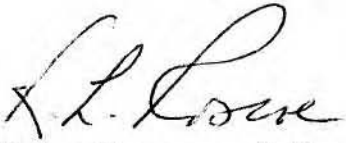
I, Robert L. Roscoe, certify as follows:

I am a registered member of the Association of Professional Engineers of the Province of British Columbia.

I graduated from Queen's University, Kingston, Ontario, in 1944 with a B.Sc. degree in Mining Engineering. I have also taken one year in post-graduate work in geology at the same university.

I have been associated with the mining industry in a professional capacity for twenty-seven years.

I have examined and logged diamond drill hole **ST** #3 which was drilled on the BOB #25 .

  
R.L. Roscoe, P.Eng.