

1. Pure silica (possibly land in a water course).
2. Altered siliceous rock.
3. Highly altered silica rock - perhaps containing jasper.
4. Breccia.
5. Altered siliceous rock - brecciated.
6. Altered silica rock with redeposited quartz and agate.
7. Silicified limestone (recrystallized).
8. Siliceous rock, altered and laid down possibly by water.
9. Altered silicarock with altered limestone chalcedony stringers.
10. Highly siliceous altered in part to agate (chalcedony).
11. As #7.
12. Altered silica rock

AREA OF CONSIDERABLE VOLCANIC ACTION AND THERMAL ACTION.

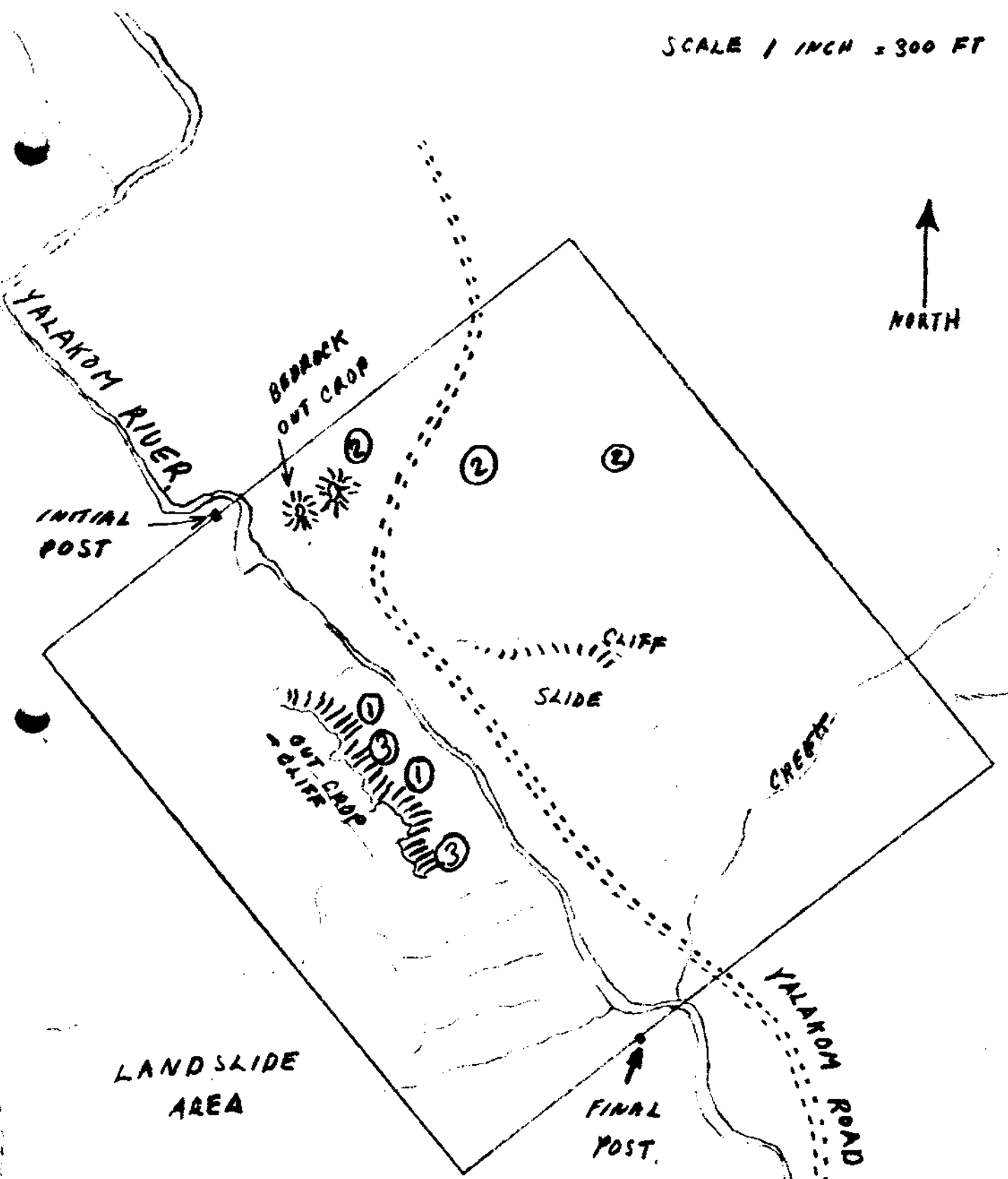
Department of
Mines and Petroleum Resources
ASSESSMENT REPORT
NO. 4991 MAP

Photo Copy

Department of
Mines and Petroleum Resources
ASSESSMENT REPORT

NO. **4991** MAP _____

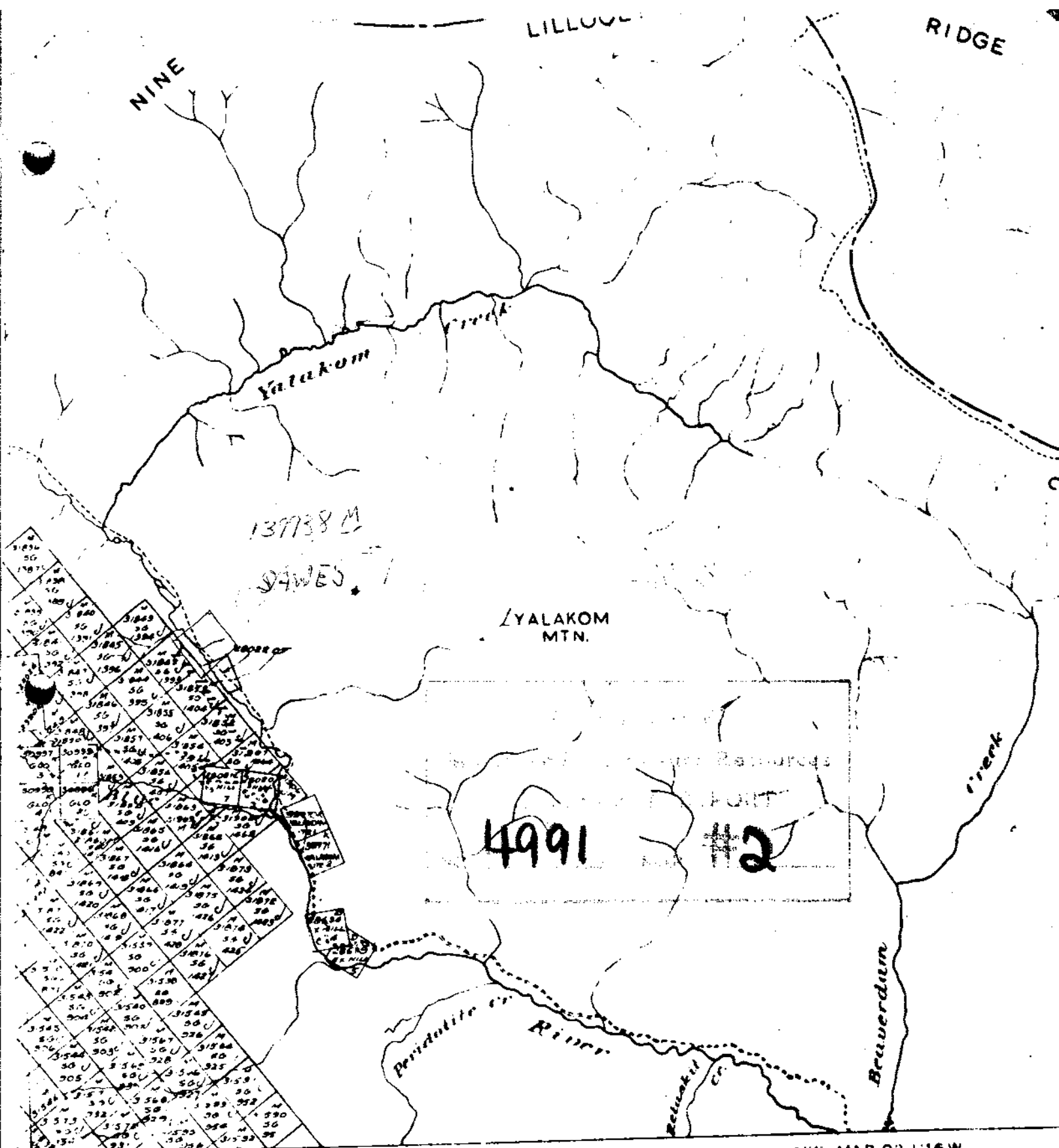
SCALE 1 INCH = 300 FT



LANDSLIDE AREA

- ① TRENCHING
- ② SURFACE SAMPLING
- ③ OPEN CUTS

NO. 4991 #1



122°30'

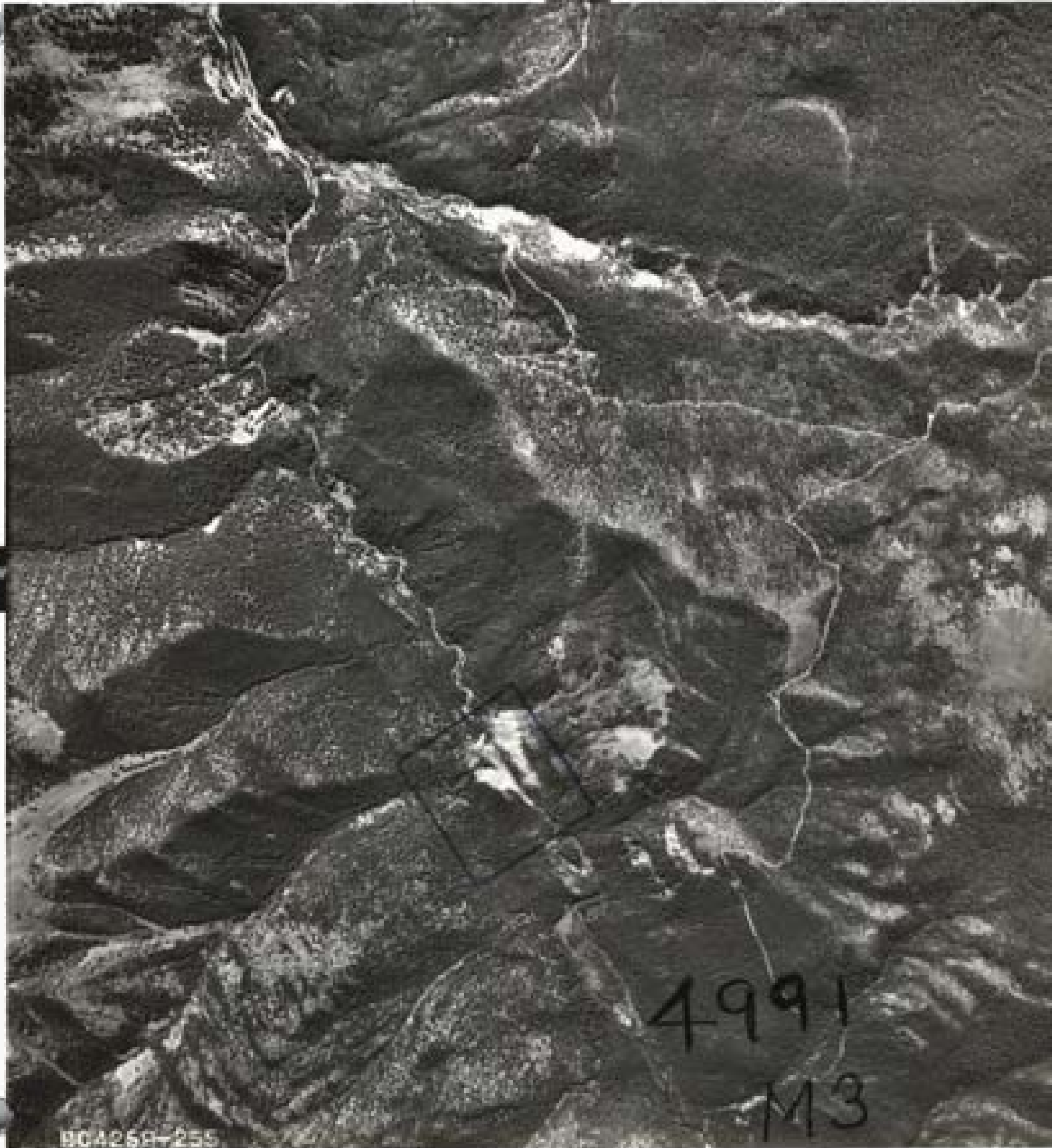
TO SOUTH SEE MAP 92J/16W

For up-to-date information on claims in any area you should apply to the Mining Recorder for the Mining Division concerned

DEPARTMENT OF MINES AND PETROLEUM
VICTORIA, B.C.

MINERAL CLAIM MAP 92O/1W

SOUTH



4991

M3

NOA268-255

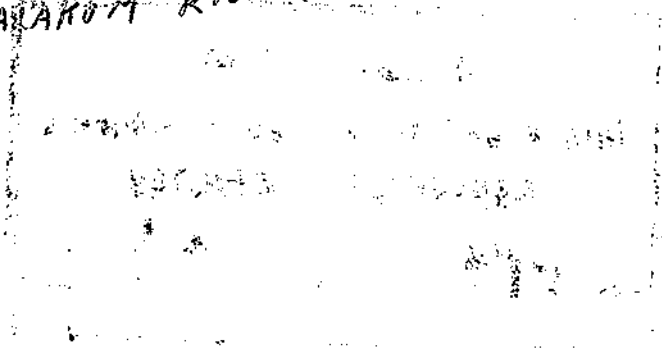
↗ ↘ sec map.

↓ NORTH

↑ YALANOH RIVER

on
Yallakom River
app. one mile downstream
from Yallakom creek.
SANWES # 1

APPROX 1 1/2 MILES UPSTREAM
FROM CONFLUENCE OF BLUE CREEK
AND YALAKOM RIVER.



Department of	
Mines and Petroleum Resources	
ASSESSMENT REPORT	
NO. 4991	MAP #3

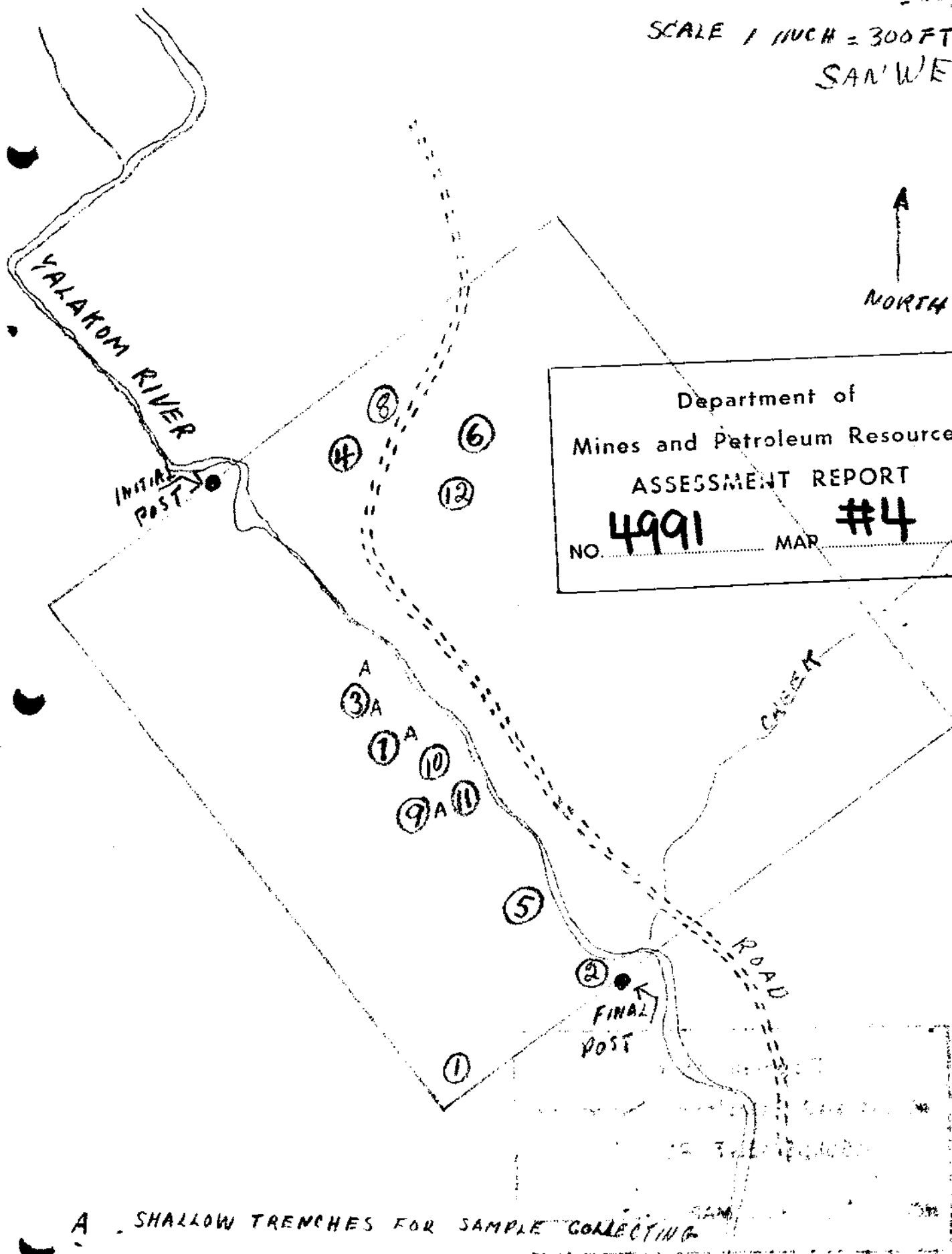
SCALE 1 INCH = 300 FT
SANWES #1

NORTH

Department of
Mines and Petroleum Resources

ASSESSMENT REPORT

NO. 4991 MAR. #4



A SHALLOW TRENCHES FOR SAMPLE COLLECTING

① TO ⑫ SURFACE, SAMPLES TAKEN
SEE DESCRIPTION ATT. LETTER