

5005

82E/5W
PROSPECTING REPORT

82E/5W

RENO MINERAL CLAIMS
OWNER: ALBERT FALKENSTEIN
OSOYOOS MINING DIVISION
1974 work

5005

50005

PROSPECTING REPORT

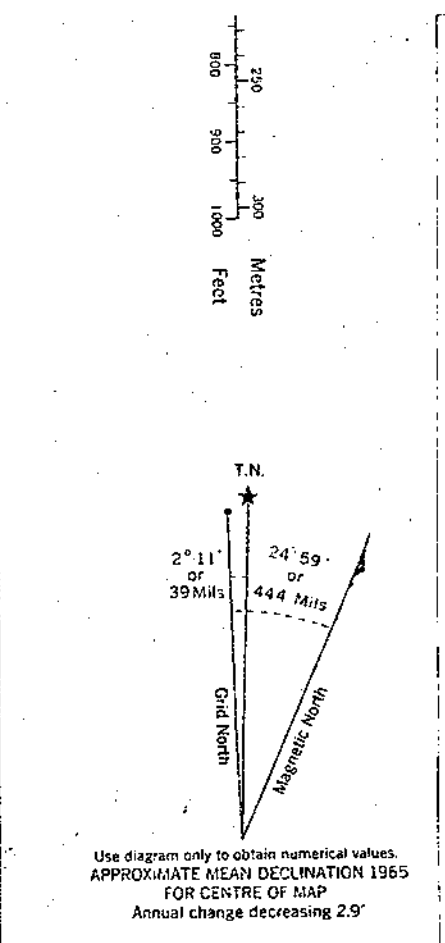
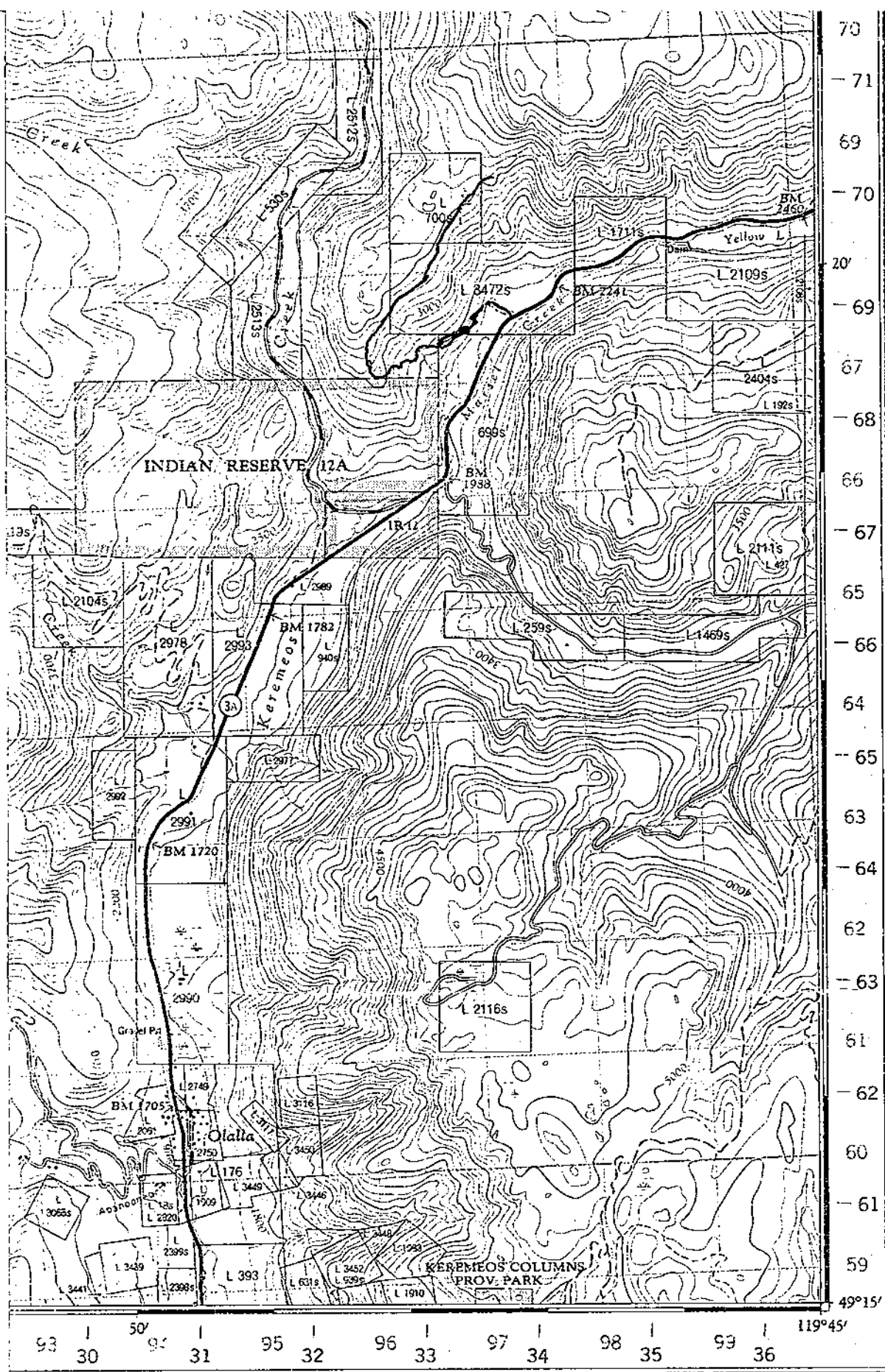
RENO MINERAL CLAIMS

OWNER: ALBERT PA. KENSTLER

OSYOOS MINING DIVISION

1974 work

82E/5
W



GRID ZONE DESIGNATION	100,000 M. SQUARE IDENTIFICATION
11 U	
TO GIVE A REFERENCE TO NEAREST 100 METRES	
EXAMPLE:	BUILDING
EASTING: Read number on grid line immediately to left of point. Estimate tenths of a square from this line eastward to point.	89 5 895
NORTHING: Read number on grid line immediately below point. Estimate tenths of a square from this line northward to point.	74 5 745
MILITARY GRID REFERENCE	895745
Nearest similar grid reference 100,000 metres (about 63 miles)	

ONE THOUSAND METRE
 UNIVERSAL TRANSVERSE MERCATOR GRID
 ZONE 11

BROWN NUMBERED TICKS INDICATE
 THE 1000 METRE U.T.M. GRID
 ZONE 10

Établie en 1954, par la DIRECTION DES LEVÉS ET DE LA CARTOGRAPHIE, MINISTÈRE DE L'ÉNERGIE, DES MINES ET DES RESSOURCES, d'après des photographies aériennes prises en 1959. Vérification des ouvrages en 1960. Imprimée en 1968.

Ces cartes sont en vente au Bureau de distribution des cartes, ministère de l'Énergie, des Mines et des Ressources, Ottawa.

TABLEAU D'ASSEMBLAGE DU SYSTÈME DE RÉFÉRENCE CARTOGRAPHIQUE

92H/3E	82E/12W
92H/8E	PENTICTON 82E/5W
92H/1E	82E/4W

INDEX TO ADJOINING MAPS OF THE NATIONAL TOPOGRAPHIC

- Building..... Bâtement.....
- School..... École.....
- Church..... Église.....
- Mine or Open cut..... Mine ou fosse à ciel ouvert.....
- Lighthouse..... Phare.....
- Power transmission line..... Ligne de transport d'énergie.....
- River with bridge..... Rivière avec pont.....
- Stream, intermittent or dry..... Cours d'eau intermittent ou à sec.....
- Lake, intermittent, irregular..... Lac intermittent, irrégulier.....
- Marsh or Swamp..... Marais ou marécage.....
- Depression contour..... Courbes de cuvette.....
- Barn..... Grange.....
- Post office..... Bureau de poste.....
- Cemetery..... Cimetière.....

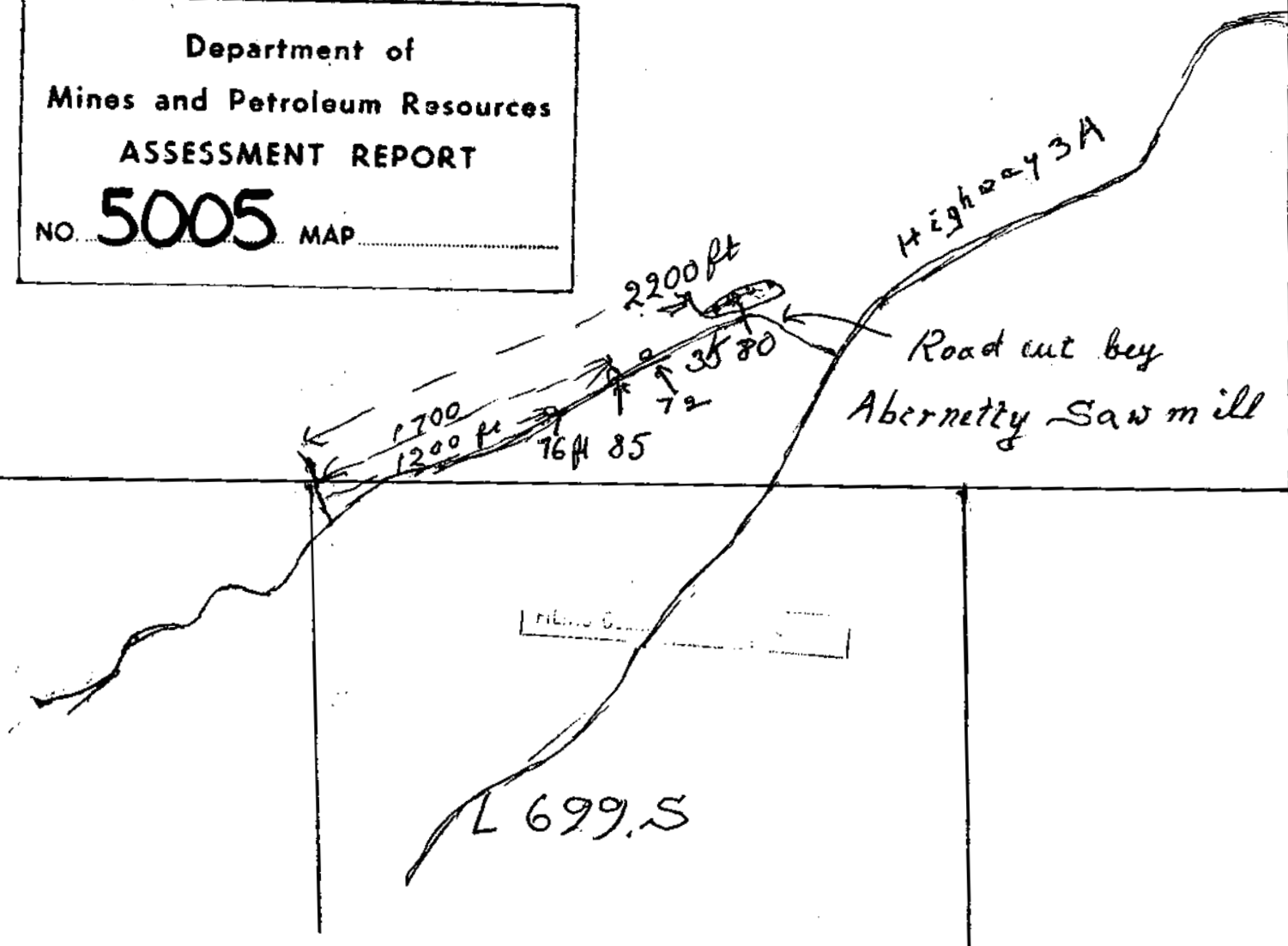
Department of
 Mines and Petroleum Resources
 ASSESSMENT REPORT
 No. 5005 MAP #1

5005 M1

L3472S

Department of
Mines and Petroleum Resources
ASSESSMENT REPORT

NO. **5005** MAP



The DD. holes are all horizontal, the distance is measured from northwest corner of Lot L 699 s; If the drawings are not exactly to proportion, the distance are approxy. corect.

The DD. holes marked on drawings, 85 ft 35 ft 15 ft are drilled from June 1973 to May 1974.

Albert Falkenstein

The mountain where the Reno Claims are situated, have had a big movement approx. 20000 years ago. A big chunk 400 ft. long and 80 ft. high, is lying alongside of the Highway, leaving a 10-30 ft. layer behind. The original rock is in some places exposed; A Gold, Silver, Nickel bearing pyroxinite olivine, partly altered to serpentine, is exposed, to find the continuation of the serpentine, I have to drill through the overlying rock. In doing this I encountered a 10 ft wide black chert with Columbite in it, at 80 ft. I hit the Serpentine. In June 1973 I started several times, encountered badly fractured quartz that damaged the diamond bits the 4th attempt I got through to 85 ft. the drilling of all holes was done in Claim No. ~~7~~^a 7. I have checked yesterday and the distance as shown in the drawings below.

