

5075

92F/13E

PERCUSSION DRILLING ASSESSMENT REPORT

ON THE

**PANTHER PROPERTY, UPPER QUINSAM LAKE,
VANCOUVER ISLAND**

by

Getty Mining Pacific, Limited - July 1974

92F/13E

5075

H.N. HORNING PERCUSSION DRILLING LTD.

c/o Rude, Gould & Elliott,
200-185 Victoria Street,
Kamloops, B.C.

August 1, 1974

Getty Mines Limited,
614-510 West Hastings Street,
Vancouver, B.C.
V6B 1L8

IN ACCOUNT WITH
H.N. Horning Percussion
Drilling Ltd.

| 1974 | Hole | Feet Drilled From | To | Total | Depth of Overburden (Ft.) |
|---------|------|----------------------|-----|--------------|------------------------------|
| July 19 | 1 | 0 | 100 | 100 | 10 |
| 20 | 1 | 100 | 330 | 230 | |
| 20 | 2 | 0 | 200 | 200 | 20 |
| 21 | 2 | 200 | 360 | 160 | |
| 21 | 3 | 0 | 220 | 220 | 20 |
| 22 | 3 | 220 | 400 | 180 | |
| 22 | 4 | 0 | 120 | 120 | 25 |
| 23 | 4 | 120 | 350 | 230 | |
| 23 | 5 | 0 | 220 | 220 | 20 |
| 24 | 5 | 220 | 350 | 130 | |
| 24 | 6 | 0 | 300 | 300 | 10 |
| 25 | 6 | 300 | 350 | 50 | |
| 25 | 7 | 0 | 350 | 350 | 7 |
| 25 | 8 | 0 | 20 | 20 | 5 |
| 26 | 8 | 20 | 300 | 280 | |
| 26 | 9 | 0 | 150 | 150 | 25 |
| 27 | 9 | 150 | 300 | 150 | |
| 27 | 10 | 0 | 250 | 250 | 20 |
| 28 | 10 | 250 | 350 | 100 | |
| 28 | 13 | 0 | 300 | 300 | 10 |
| 28 | 11 | 0 | 100 | 100 | 17 |
| 29 | 11 | 100 | 350 | 250 | |
| 29 | 12 | 0 | 350 | 350 | 4 |
| 29 | 14 | 0 | 90 | 90 | 9 |
| | | | | 4,530 | |

Department of
Mines and Petroleum Resources
ASSESSMENT REPORT
NO. **5015** MAP

Getty Mines Limited

IN ACCOUNT WITH
H.N. Horning Percussion
Drilling Ltd.

| | |
|--|--------------------|
| 4,530 feet drilled @ \$2.50 per foot | \$11,325.00 |
| 4 batches M9 grout used @ \$20.00 per batch | 80.00 |
| Moving in and out including ferry charges | <u>308.00</u> |
| | <u>\$11,713.00</u> |

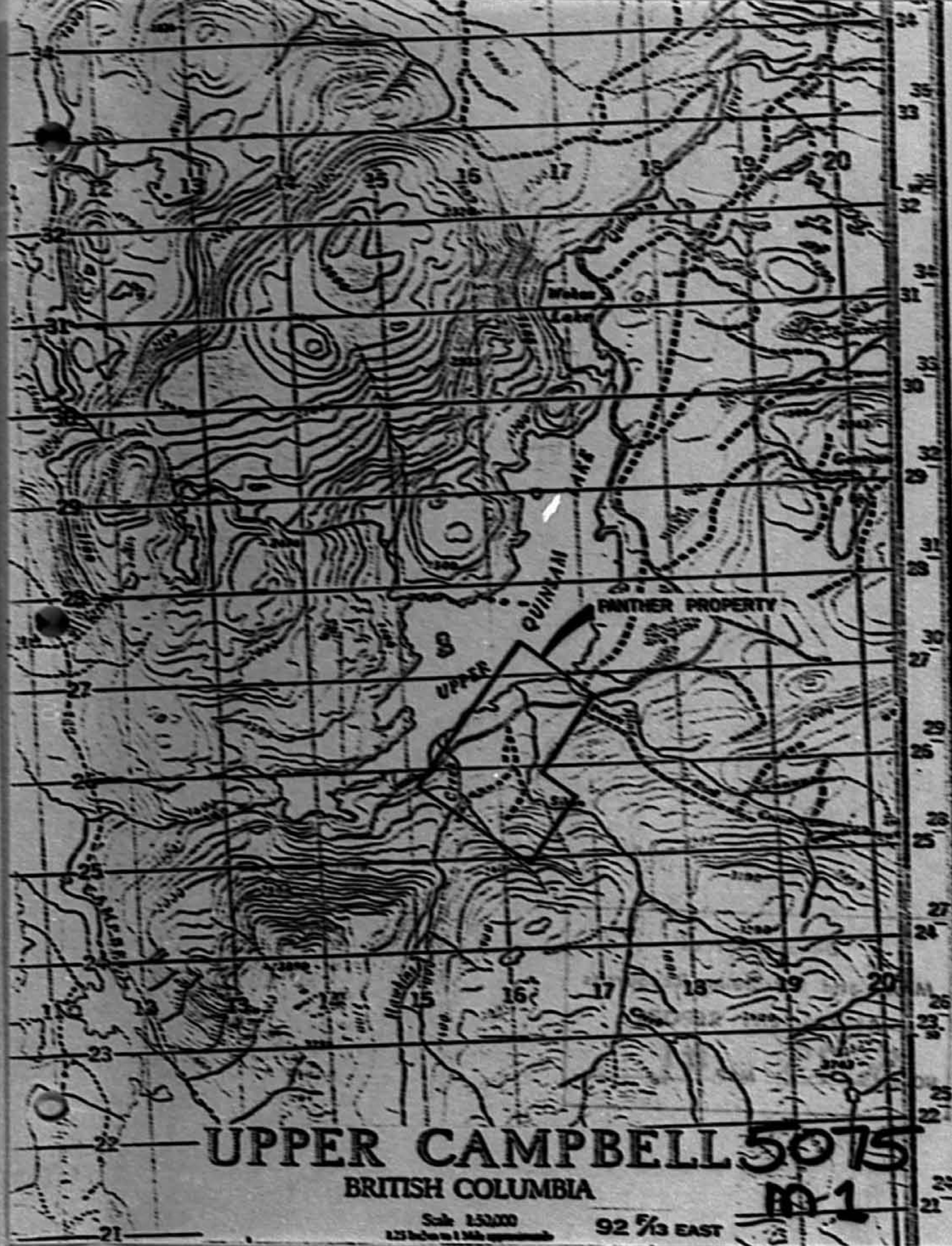
Department of
Mines and Petroleum Resources
ASSESSMENT REPORT
NO. **5075** M.P.

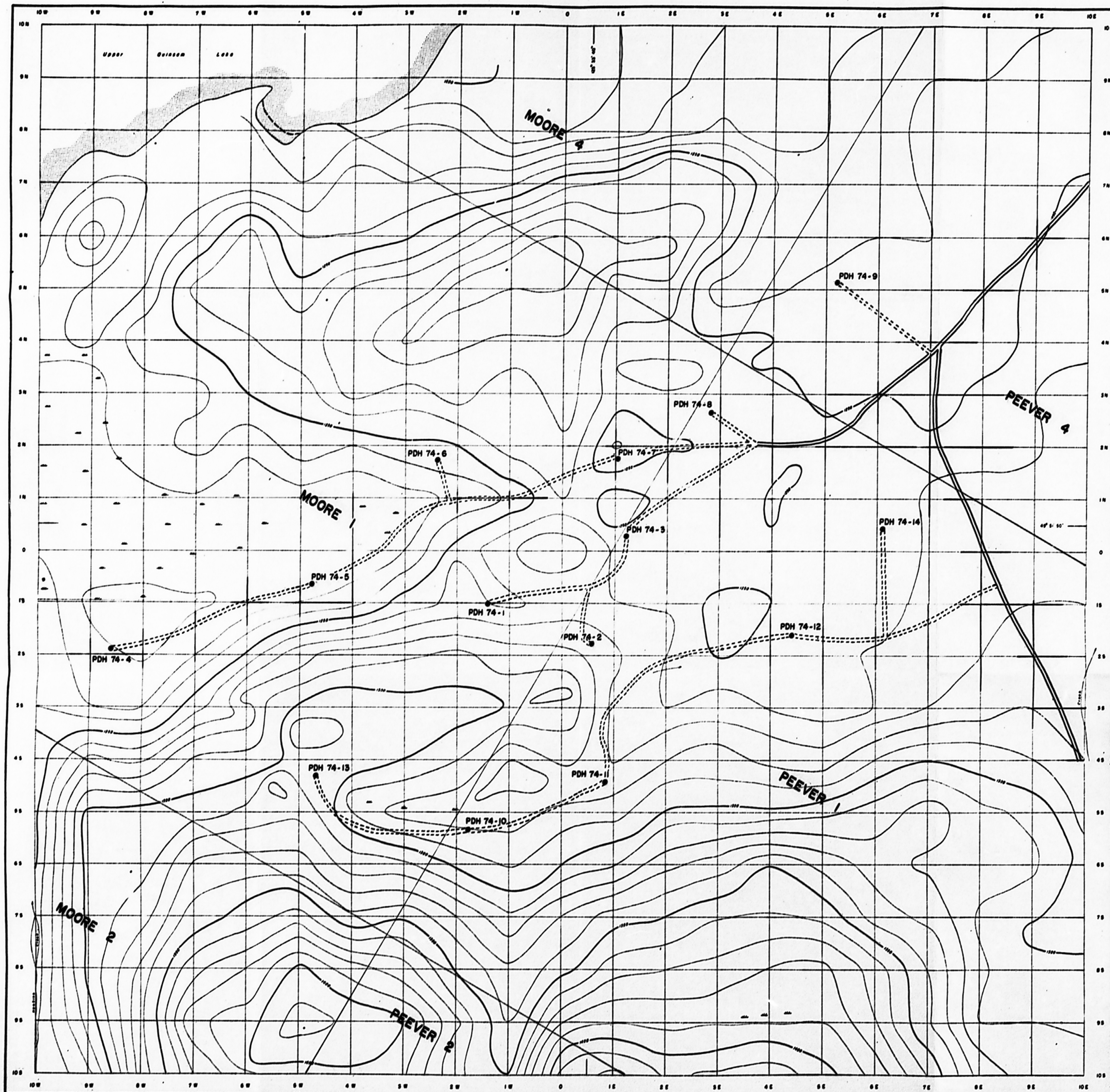
UPPER CAMPBELL 5075
BRITISH COLUMBIA

Scale 1:50,000
1:50,000 = 1 Mile approximately

92 2/3 EAST

10-1

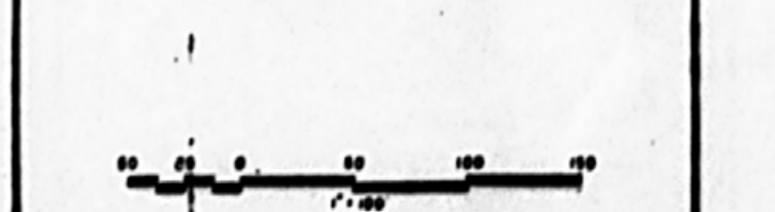




5075
M2

Department of
Mines and Petroleum Resources
ASSESSMENT REPORT
NO. 5075 MAP #2

==== ROADS CONSTRUCTED IN 1974



Getty Mines Limited
PARTNER PROPERTY
NORANDA MINING DIVISION - VANCOUVER ISLAND

DRILL HOLE PLAN

Scale of 1" = 100'
Sheet No. 2108

