

# 5083

REPORT ON GEOCHEMICAL SURVEY - 1974

WAP PROPERTY, CLEARWATER AREA

KAMLOOPS MINING DIVISION

N.T.S. 92P/16W

## 92P/16W

Claims:    WAP 43-71 (Record Nos 126108-126136)  
              WAP 73    (Record No 126138)  
              WAP 75-84 (Record Nos 126140-126149)

for:            AMOCO CANADA PETROLEUM COMPANY LTD.,  
by:             S.L. Putter                                July 15, 1974

Department of  
Mines and Petroleum Resources  
ASSESSMENT REPORT  
NO. **5083** MAP \_\_\_\_\_

## TABLE OF CONTENTS

	Page
SUMMARY AND CONCLUSIONS.....	1
DESCRIPTION OF WAP CLAIMS.....	3
LOCATION AND ACCESS.....	4
OWNERSHIP.....	4
GEOCHEMISTRY.....	5

## APPENDIX

ASSESSMENT DETAILS AND BREAKDOWN OF COSTS	7
CERTIFICATE.....	10

## FIGURES

#1 LOCATION MAP .....	1 inch = 100 miles
#2 CLAIM MAP .....	1 inch = 3,300 feet

## MAPS

#3 GEOCHEMISTRY - Cu (ppm)	1 inch = 400 feet
#4 GEOCHEMISTRY - Mo (ppm)	1 inch = 400 feet
#5 GEOCHEMISTRY - Zn (ppm)	1 inch = 400 feet
#6 GEOCHEMISTRY - Ag (ppm)	1 inch = 400 feet

## SUMMARY AND CONCLUSIONS

The WAP property is situated in the Kamloops Mining Division of central British Columbia, 80 miles north of Kamloops and 220 miles northeast of Vancouver. It consists of 150 claims in good standing until at least June 28, 1975. This report encompasses a geochemical survey performed on the South Group, a 40-claim block comprising claims WAP 43-71, WAP 73 and WAP 75-84. All claims are 100 per cent owned by Amoco Canada Petroleum Company Ltd.

Access to the property is by logging roads from Clearwater, some 25 miles to the southeast.

Between May 29 and June 9, 1974 a total of 123 geochemical stream sediment samples were collected by Amoco Canada Petroleum Company Ltd. personnel from two creeks and their tributaries draining Double and Patricia Lakes. The samples were analyzed for copper, molybdenum, zinc and silver by Min-En Laboratories Ltd., North Vancouver, using Atomic Absorption methods.

The only anomaly found consisted of two values of 95 and 136 ppm molybdenum in a small first-order stream on a tributary of the creek draining Double Lake. Coincident moderately high, but not anomalous, molybdenum and silver values occur in the tributary over a total distance of 1500 feet both below and above the mouth of the anomalous first-order stream. No other anomalies were found.

The geochemical results indicate the presence of a definite area anomalous in molybdenum. In that no definite anomalies occur in streams immediately northwest and southeast of the anomalous tributary, the source of the anomaly is apparently limited in extent.

DESCRIPTION OF WAP CLAIMS

The WAP claims are located in the Kamloops Mining Division of central British Columbia. The claims were staked by Amoco Canada Petroleum Company Ltd. personnel as part of the Clearwater Regional Reconnaissance Project during the summer of 1973.

The following 150 WAP claims were recorded and are in good standing.

	<u>Record Nos</u>	<u>Expiry Date</u>
WAP 1-10	126066-126149	June 28, 1975
WAP 12	126077	June 28, 1975
WAP 14-71	126079-126136	June 23, 1975
WAP 73	126138	June 28, 1975
WAP 75-84	126140-126149	June 28, 1975
WAP 85-138	126542-126595	August 6, 1974
WAP 145-156	126596-126607	August 6, 1974
WAP 1Fr-4Fr	not available	July 11, 1975

For assessment purposes, this report encompasses work performed on the following claim group:

SOUTH GROUPRecord Nos

WAP 43-71

126108-126136

WAP 73

126138

WAP 75-84

126140-126149

LOCATION AND ACCESS

The WAP claims are situated in the Kamloops Mining Division, 80 miles north of Kamloops, B.C., and 220 miles northeast of Vancouver, B.C.

Access to the claims is by logging roads, approximately 25 miles northwest from Clearwater. The roads are maintained by Clearwater Timber Products from whom permission to travel the roads is required. The WAP #1-84 claims are bounded on three sides by Logging Roads No. 2, 6, and 8.

An up-to-date road construction map is available from the Clearwater Timber Products office in Clearwater.

OWNERSHIP

All 150 WAP claims are 100 per cent owned by Amoco Canada Petroleum Company Ltd.,

GEOCHEMISTRY

Between May 29 and June 9, 1974, a total of 123 geochemical samples of stream sediment were collected primarily from each of the two major creeks and their tributaries draining Double and Patricia Lakes. Samples on the major creeks were taken every 400 feet and on their tributaries every 200 feet.

The samples were analyzed for copper, molybdenum, zinc and silver by Min-En Laboratories Ltd., North Vancouver, employing the following procedure:

After drying the samples at 95°C stream sediment samples were screened by 80 mesh sieve to obtain the minus 80 mesh fraction for analysis. One gram of each sample was then digested for six hours with an  $\text{HNO}_3\text{-HClO}_4$  mixture. After cooling the samples were diluted to standard volume and the solutions analyzed by Atomic Absorption Spectrophotometer.


Molybdenum values over the entire survey range from 5 to 136 ppm. The only anomaly found consisted of two values of 95 and 136 ppm molybdenum in a small first-order stream on a tributary of the creek draining Double Lake. Moderately high, but not

anomalous, molybdenum values greater than 60 ppm occur consistently in the tributary over a total distance of 1500 feet both below and above the mouth of the anomalous first-order stream.

Silver values range from 0.2 to 2.0 ppm. No anomalies were found, although moderately high values greater than 1.2 ppm occur coincident with the similarly consistent moderately high molybdenum values.

Copper values range from 3 to 91 ppm; zinc values range from 11 to 92 ppm. No anomalies were found in these elements.

July 15, 1974

  
\_\_\_\_\_  
S. L. Putter, B.Sc. M.Sc. (App)  
Geologist

July 15, 1974

  
\_\_\_\_\_  
H.E.O. Neugebauer



APPENDIXASSESSMENT DETAILS AND BREAKDOWN OF COSTS

Property: WAP  
Mining Division: Kamloops  
Province: British Columbia  
Location: Clearwater area  
Owner and Operator: Amoco Canada Petroleum Company Ltd.  
Claims:

<u>South Group</u>	<u>Record Nos</u>
WAP 43-71	126108-126136
WAP 73	126138
WAP 75-84	126140-126149

GEOCHEMICAL SURVEY

Date Started: May 29, 1974  
Date Finished: June 9, 1974  
Number of Samples: 123 (South Group)

Salaries

<u>No of Days</u>	<u>Dates</u>	<u>Name</u>	<u>Rate/Month</u>	<u>Total</u>
6	May 29,31 June 2,5,6,7	J.McFaul1	\$777.00	\$233.10
6	May 29,31 June 2,5,6,7	T.Krushel	\$582.75	\$174.82
7	May 31 June 1,2,4,5, 6,9	B.Gurney	\$610.50	\$213.68
7	May 31 June 1,2,4,5, 6,9	G. Wine	\$610.50	\$213.68
1	May 31	B.Katila	\$832.50	\$ 41.63
			TOTAL	<u>\$876.91</u>

Food and Accommodation in Field

32 man-days (including supervision) @ \$8.00 \$256.00

Ground Transportation

1/4 month of truck rental @ \$450.00	\$112.50	
Oil and Gas	<u>15.00</u>	\$127.50

Geochemical Analysis of 123 samples

123 stream sediment samples - 4 elements @ \$2.50		
Preparation	<u>0.35</u>	\$350.55
Shipping of samples		5.80
Sample bags - \$33/1000 bags		<u>4.06</u> \$360.41

SOUTH GROUP

Salaries	\$876.91
Food and Accommodation in field	256.00
Ground transportation	127.50
Geochemical analysis of 123 samples	<u>360.41</u>
TOTAL.....	\$1,620.82

July 15, 1974

*S. L. Putter*

Sinai L. Putter, B.Sc. M.Sc. (App)

July 15, 1974

*H. E. O. Neugebauer*

H.E.O. Neugebauer

Declared before me at the *City*  
of *Amnour*, in the  
Province of British Columbia, this *6<sup>th</sup>*  
of *August* 1974, A.D.

*S. L. Putter*

*J. P. Phillips*

A Commissioner for taking Affidavits within British Columbia or  
A Notary Public in and for the Province of British Columbia.

Sub-mining Recorder

## CERTIFICATE

I, Sinai L. Putter, of the Municipality of Richmond, in the Province of British Columbia, hereby certify:

1. That I am a geologist and a Fellow of the Geological Association of Canada with a residence address at Suite 304, 645 Minoru Boulevard, Richmond, B.C.
2. That I am registered as an Engineer in Training of the Association of Professional Engineers of the Province of British Columbia.
3. That I hold a B.Sc. degree and an M.Sc. (Applied) degree from McGill University.
4. That I have been practising my profession as a geologist for over six years.
5. That the work herein reported was performed under my direct supervision.

Dated at Vancouver, this 15th day of July, 1974.



S.L. Putter, B.Sc., M.Sc. (App)

MAP OF  
**BRITISH COLUMBIA**

SCALE IN MILES



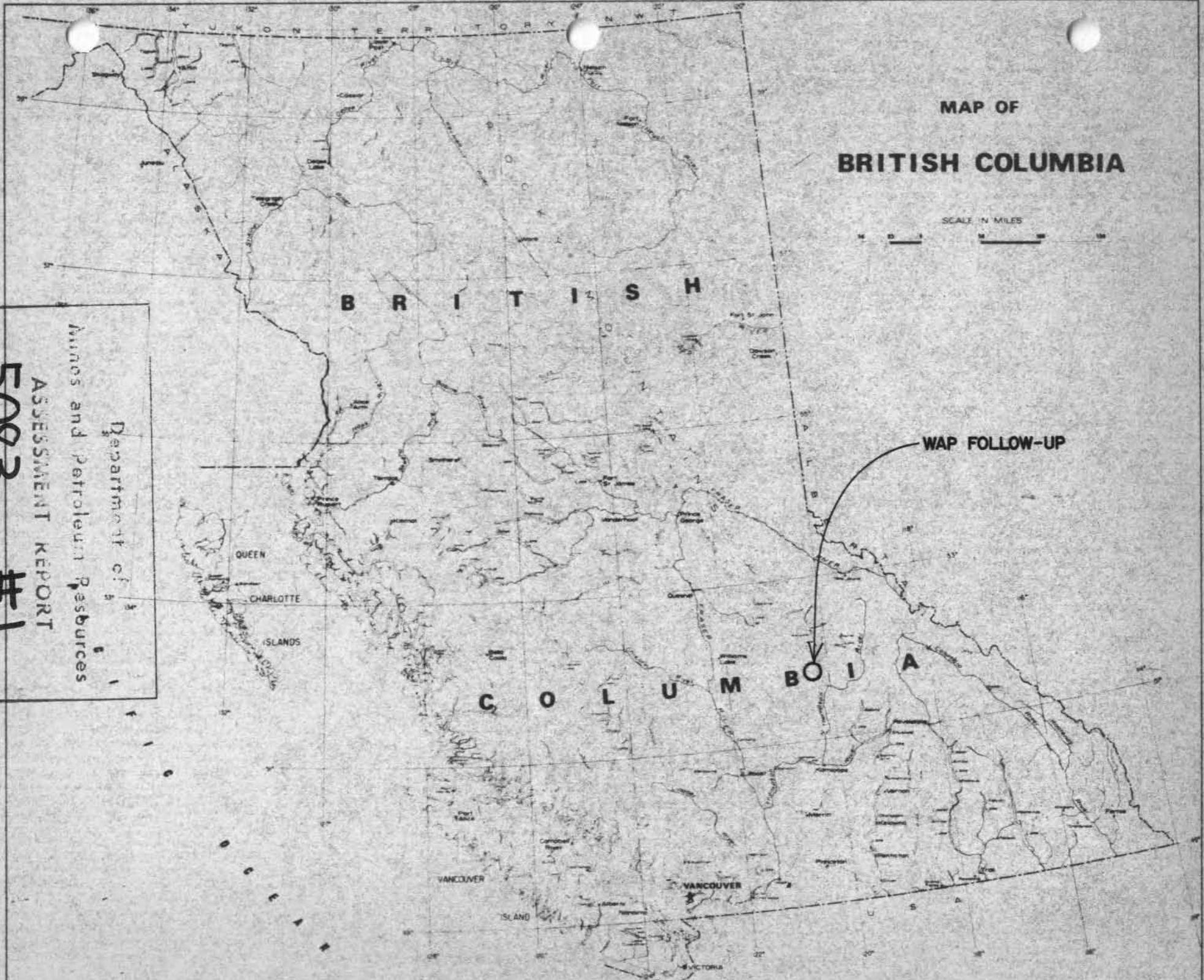
B R I T I S H

C O L U M B I A

WAP FOLLOW-UP



Department of  
Mines and Petroleum Resources  
ASSESSMENT REPORT  
NO. **5083** MAP # **1**





WAP NO.1 FR.

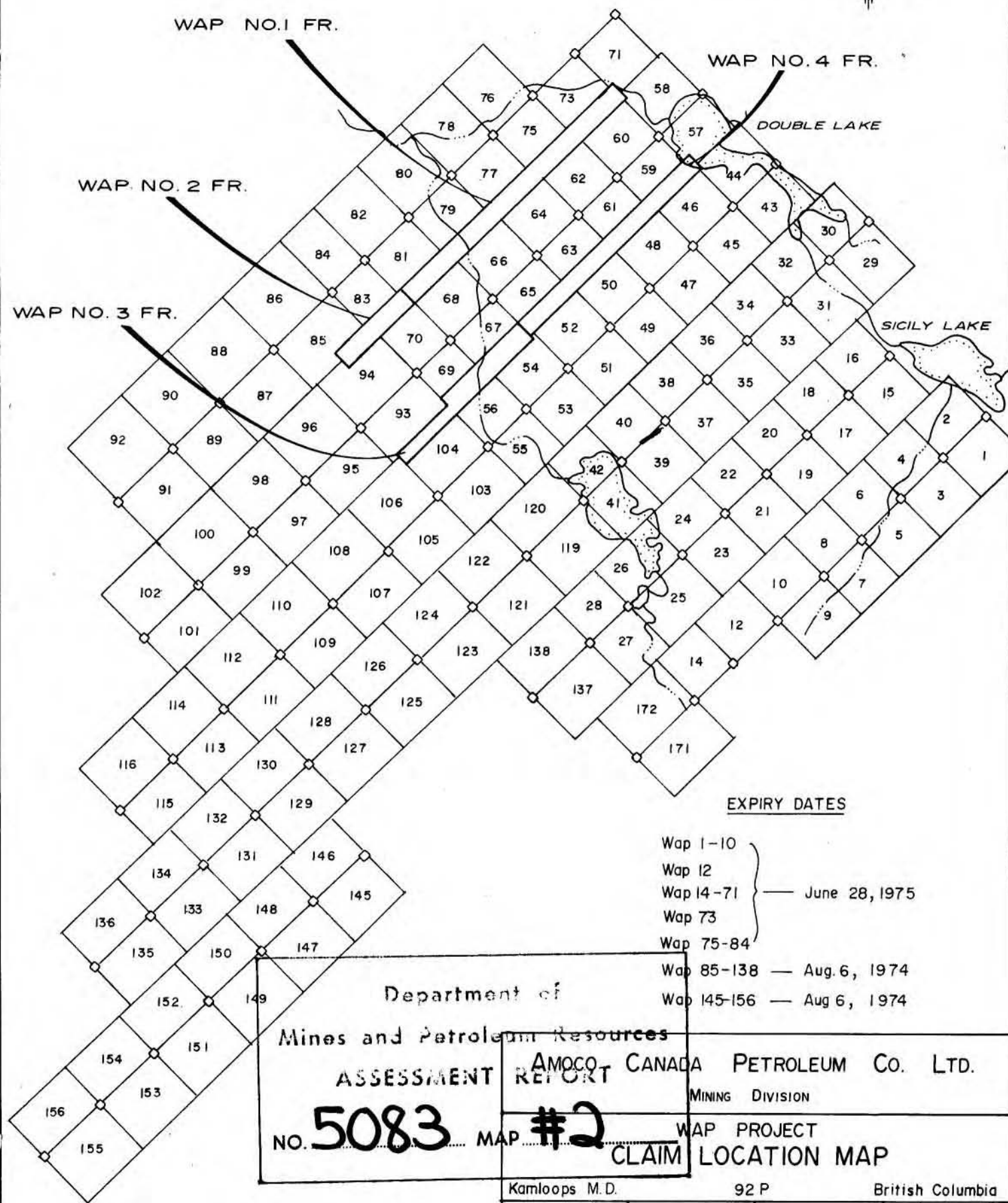
WAP NO.4 FR.

WAP NO.2 FR.

DOUBLE LAKE

WAP NO.3 FR.

SICILY LAKE



EXPIRY DATES

- Wap 1-10
- Wap 12
- Wap 14-71
- Wap 73
- Wap 75-84
- Wap 85-138 — Aug. 6, 1974
- Wap 145-156 — Aug 6, 1974

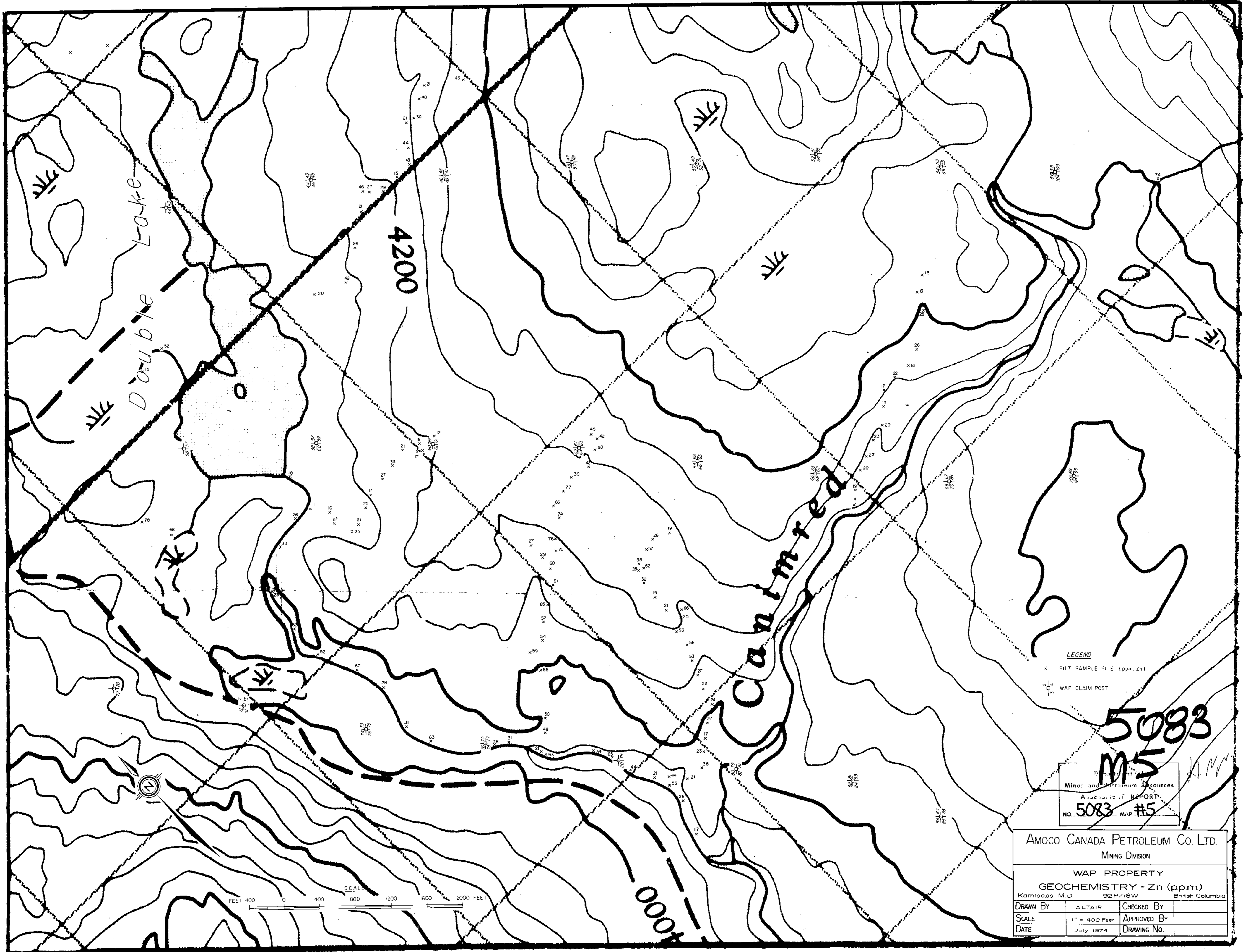
Department of  
Mines and Petroleum Resources

AMOCO CANADA PETROLEUM CO. LTD.  
ASSESSMENT REPORT  
MINING DIVISION

NO. **5083** MAP # **2** WAP PROJECT  
CLAIM LOCATION MAP

Kamloops M.D.		92 P	British Columbia
Drawn By	Altair	Checked By	
Scale	1" = 3300'	Approved By	
Date	July, 1974	Drawing No.	





**LEGEND**  
 X SILT SAMPLE SITE (ppm Zn)  
 [Symbol] WAP CLAIM POST

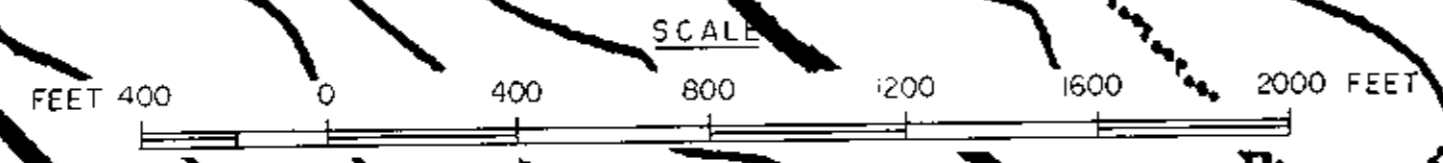
**5083**  
**M5**

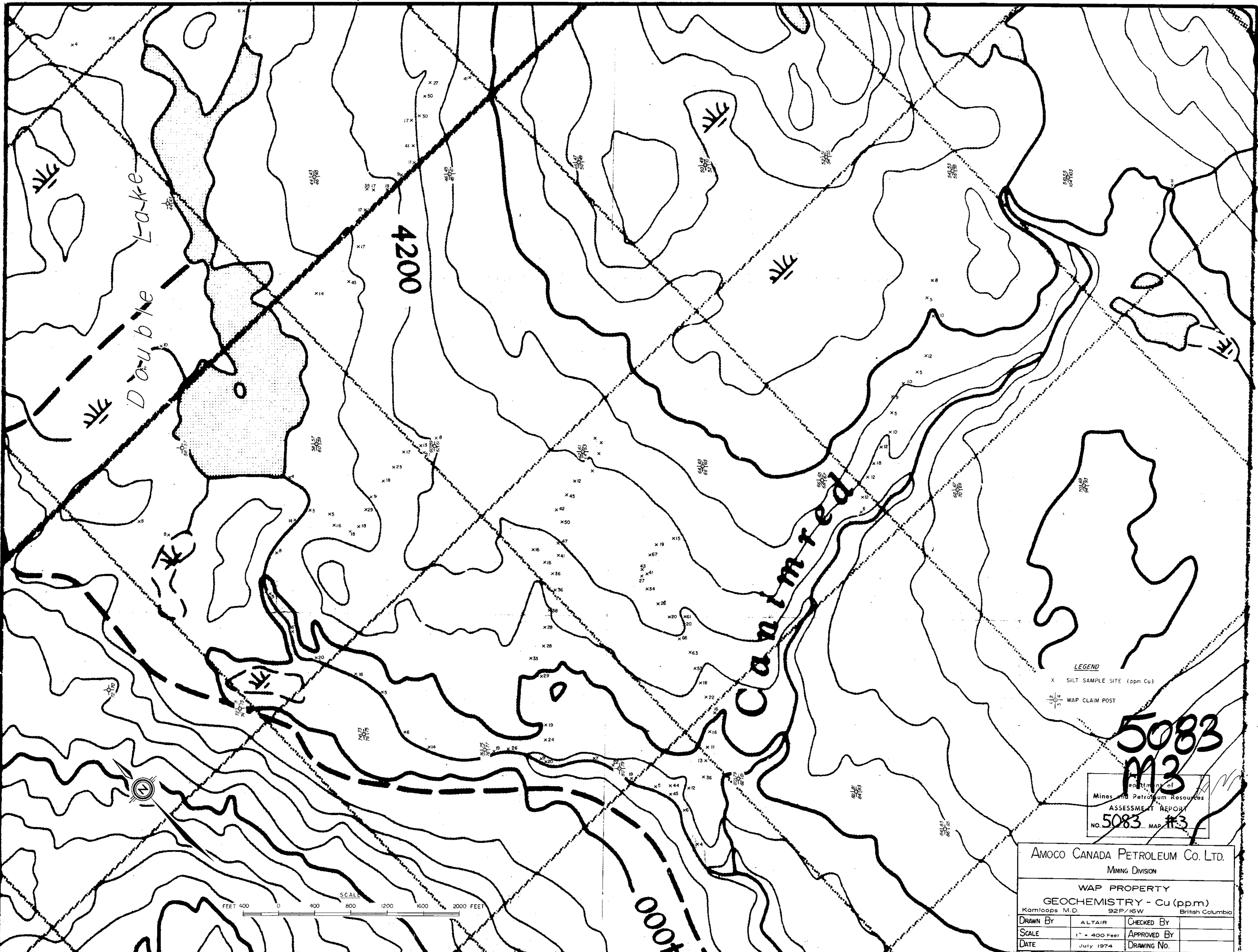
Department of  
 Mines and Petroleum Resources  
 A JOURNAL REPORT  
 NO. 5083 MAP #5

AMOCO CANADA PETROLEUM CO. LTD.  
 MINING DIVISION

WAP PROPERTY  
 GEOCHEMISTRY - Zn (ppm)  
 Kamloops M.D. 92P/16W British Columbia

DRAWN BY	ALTAIR	CHECKED BY	
SCALE	1" = 400 Feet	APPROVED BY	
DATE	July 1974	DRAWING NO.	





**LEGEND**  
 X SILT SAMPLE SITE (ppm. Cu)  
 WAP CLAIM POST

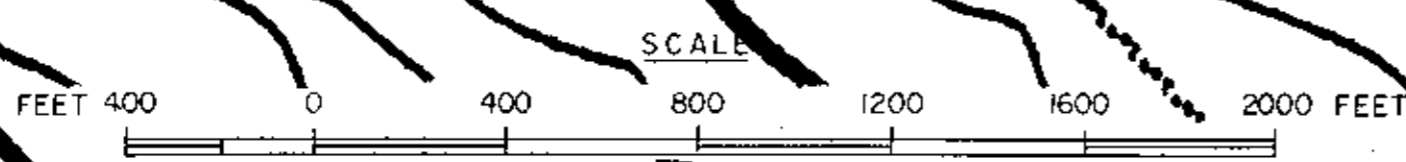
**5083**  
**M3**

Department of  
 Mines and Petroleum Resources  
 ASSESSMENT REPORT  
 NO. 5083 MAP #3

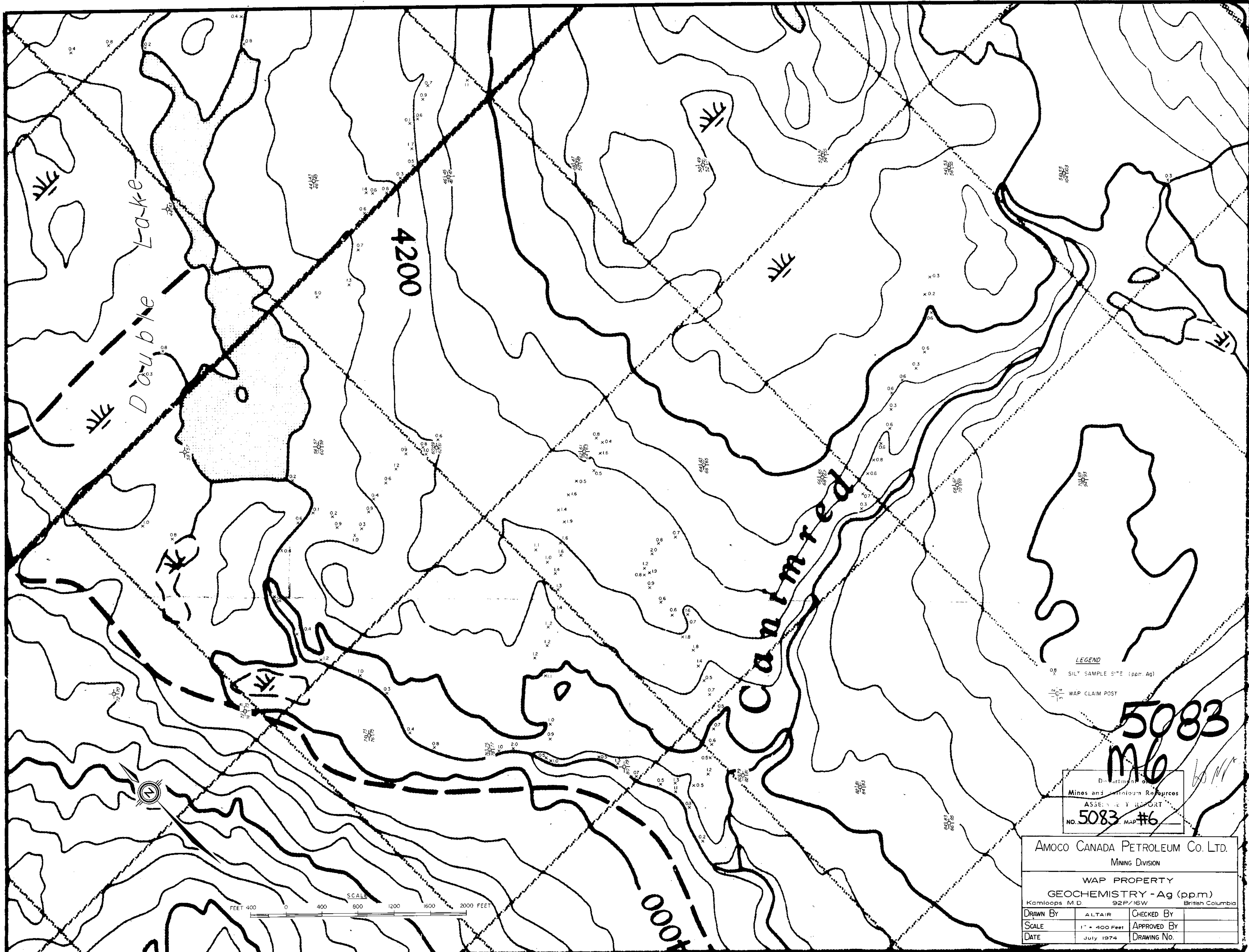
AMOCO CANADA PETROLEUM CO. LTD.  
 MINING DIVISION

WAP PROPERTY  
 GEOCHEMISTRY - Cu (ppm)  
 Kamloops M.D. 92P/16W British Columbia

DRAWN BY	ALTAIR	CHECKED BY	
SCALE	1" = 400 Feet	APPROVED BY	
DATE	July 1974	DRAWING No.	







**LEGEND**  
 x SILTY SAMPLE SITE (ppm Ag)  
 WAP CLAIM POST

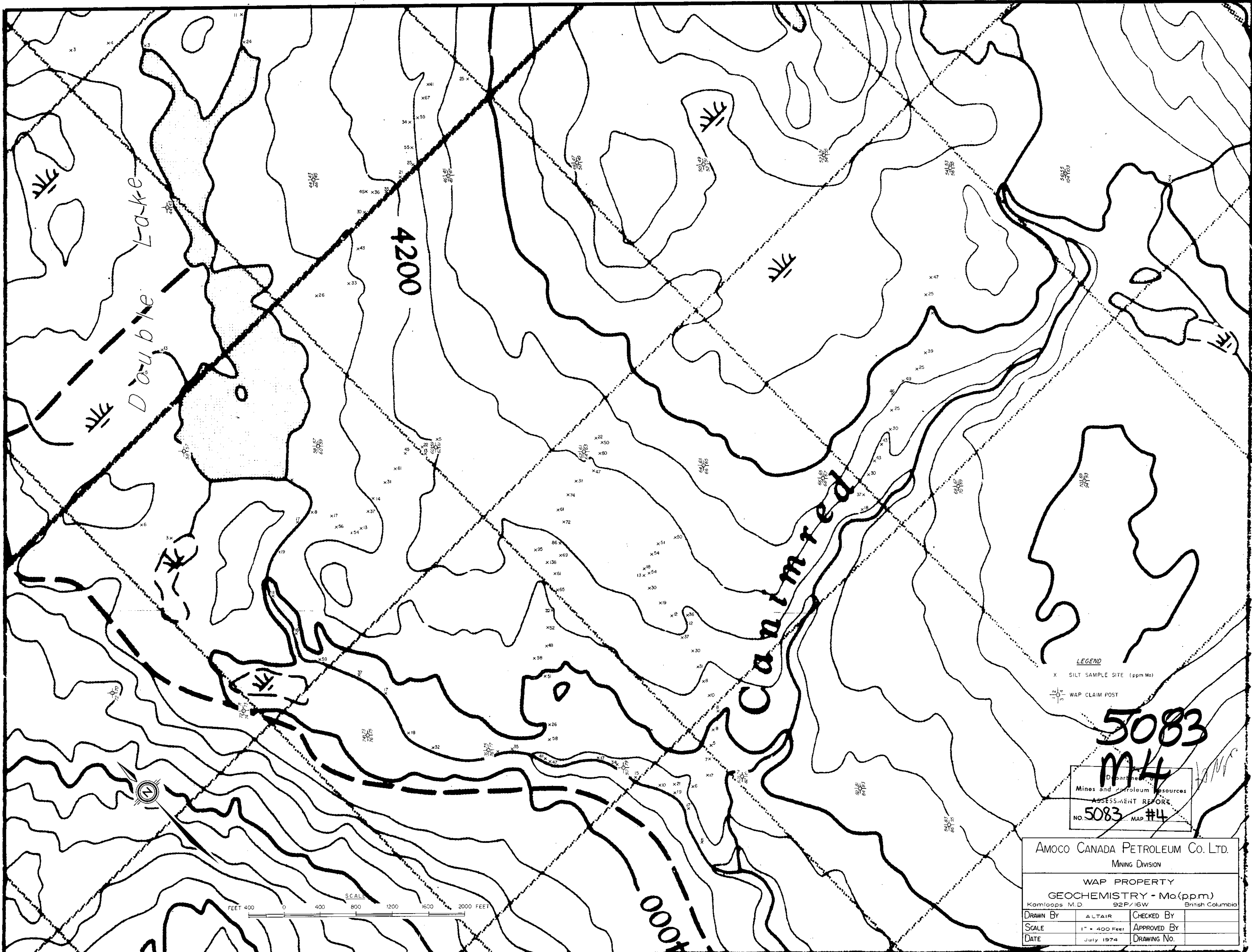
**5083**  
**M6**

Department of  
 Mines and Technical Surveys  
 ASSESSMENT REPORT  
 NO. **5083** MAP #6

AMOCO CANADA PETROLEUM CO. LTD.  
 MINING DIVISION

WAP PROPERTY		
GEOCHEMISTRY - Ag (pp.m)		
Kamloops M.D. 92P/16W British Columbia		
DRAWN BY	ALTAIR	CHECKED BY
SCALE	1" = 400 Feet	APPROVED BY
DATE	July 1974	DRAWING NO.

SCALE  
 FEET 0 400 800 1200 1600 2000 FEET



**LEGEND**

- X SILT SAMPLE SITE (ppm Mo)
- WAP CLAIM POST

**5083**  
**M4**

Department of  
 Mines and Petroleum Resources  
 ASSESSMENT REPORT  
 NO. 5083 MAP #4

AMOCO CANADA PETROLEUM CO. LTD.  
 MINING DIVISION

WAP PROPERTY		
GEOCHEMISTRY - Mo(ppm)		
Kamloops, B.C. 92P/16W British Columbia		
DRAWN BY	ALTAIR	CHECKED BY
SCALE	1" = 400 Feet	APPROVED BY
DATE	July 1974	DRAWING No.

