

1974 Assessment Report

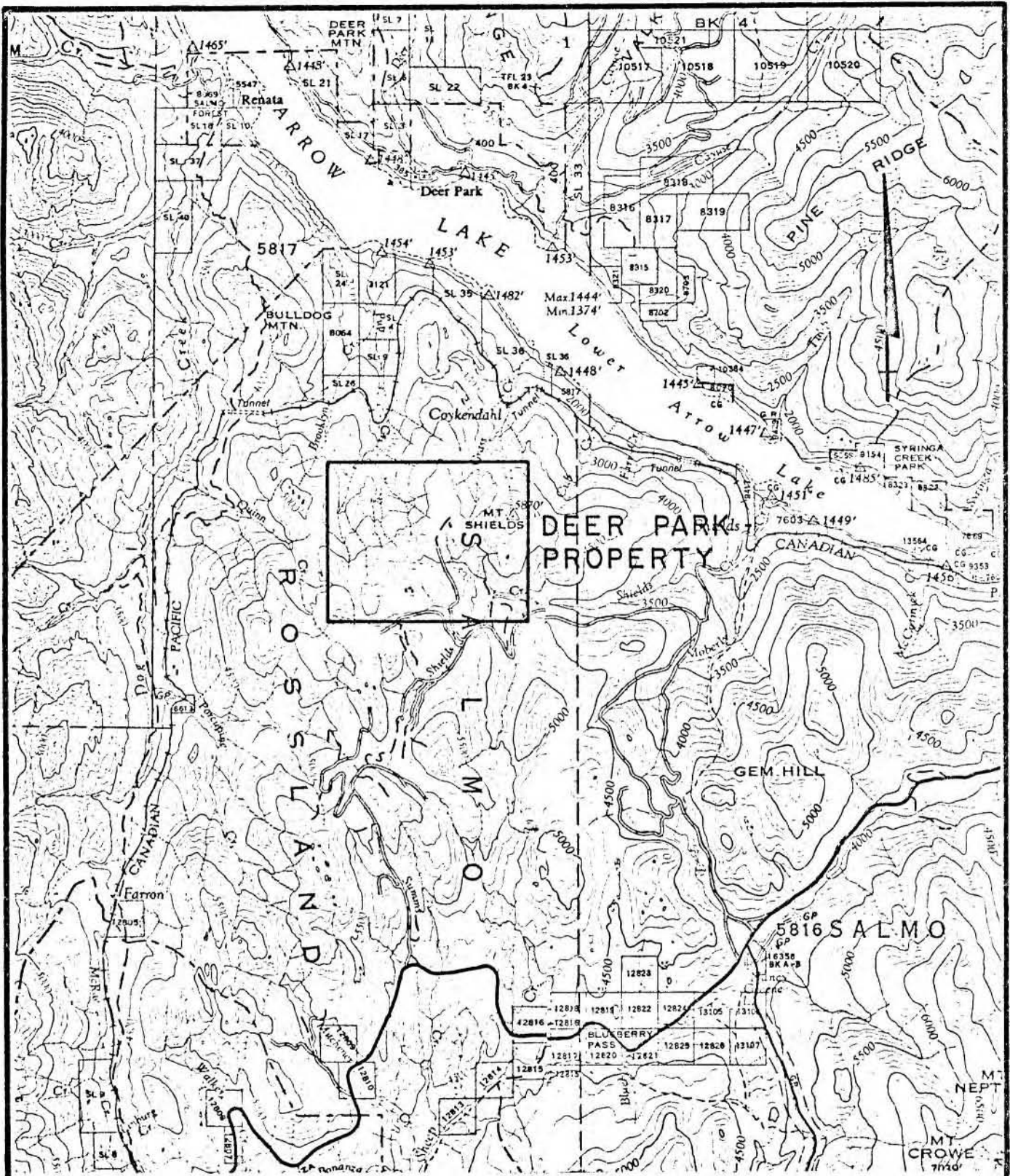
5101

82E/8E

TITLE	Deer Park Property
AUTHOR	H.W. Sellmer
DATE	August, 1974
COMMODITY	Mo
LOCATION-Area	Castlegar
-Mining Division	Trail Creek
-Coordinates	Latitude 49°20'N Longitude 118°02'
-NTS	82 E 8
CLASS	Prospect - Drilled

AMAX VANCOUVER OFFICE

Department of
Mines and Petroleum Resources
ASSESSMENT REPORT
NO. 5101 MAP



AMAX EXPLORATION INC.

DEER PARK PROPERTY

Department of CREEK MINING DIVISION — BRITISH COLUMBIA

Mines and Petroleum Resources **LOCATION MAP**

ASSESSMENT REPORT

SCALE MILES

5101

#1

NO. MAP #

N.T.S. Ref. 82 E 8

FIG. 1

GENERAL STATEMENT

During June and July 1974, 2890 feet of diamond drilling was completed on the Deer Park Property located in the Trail Creek Mining Division.

The property, situated within the Coryell Intrusion, was tested for possible MoS_2 mineralization.

Location and Access

The Deer Park Property (Figure 1, after page 1) is located at an elevation of 5,000 feet on a north branch of Upper Shields Creek. Lower Arrow Lake lies four miles to the north and the town of Castlegar on the Columbia River lies 18 miles to the east. Approximate coordinates for the center of the property are $49^{\circ}20'N$ and $118^{\circ}02'$.

The claims are accessible by road. Kinnaird, the nearest settlement, is 30 miles away. Approximately 17 miles of the total distance are along the Blueberry-Paulson Highway (#3). A gravel road heading north leaves the highway immediately east of the Rosslund cut-off, the junction between Highway #3 and #3B, and descends into the valley of Moberley Creek. Eight miles from the highway a road turns off to the west and follows the south side of Shields Creek. A branch to the north leads onto the property. The latter part of the road is rough and locally steep so that 4-wheel drive may be required in bad weather or when the road is soft or snow covered.

The Canadian Pacific Railroad skirts the south side of Lower Arrow Lake and passes within four miles of the central part of the property.

Previous Work

The Deer Park Property includes old workings formerly known as the "Midas Group" which probably date back to the turn of the century. The workings include two adits, some open cuts, and a shaft.

TABLE OF CONTENTS

GENERAL STATEMENT----- 1
 Location and Access----- 1
 Previous Work----- 1
DIAMOND DRILLING PROGRAM----- 2

TABLE I - CLAIM STATUS

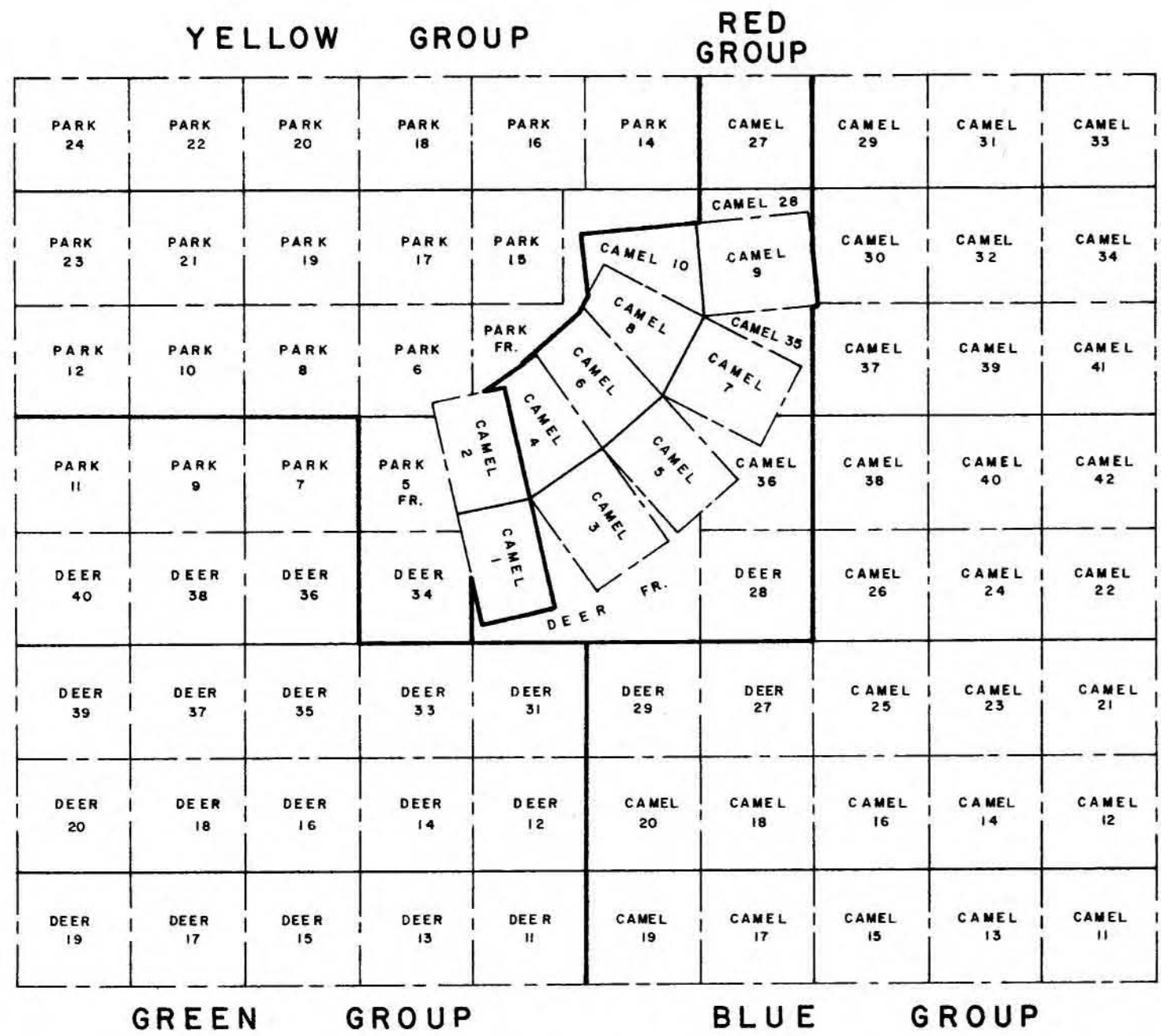
STATEMENT OF QUALIFICATIONS - H.W. Sellmer

APPENDICES

APPENDIX I - Assessment Data
 II - Cameron McCutcheon Drilling Limited Contract
 III - Billings for Program
 IV - Diamond Drill Logs DP-74-1
 DP-74-2
 DP-74-3
 DP-74-4
 DP-74-5

ILLUSTRATIONS

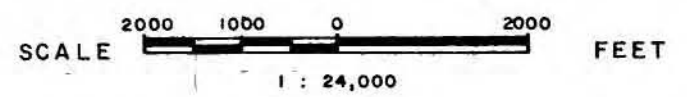
#1 Figure 1 - Location Map-----After Page 1
#2 2 - Claim Map----- (1"=2000')-----After Page 1
#3 3 - Diamond Drill Hole Location (1"=1000')--After Page 2



Department of
 Mines and Petroleum Resources
ASSESSMENT REPORT
 NO. **5101** MAP **#2**

AMAX EXPLORATION INC.
DEER PARK PROPERTY
 TRAIL CREEK MINING DIVISION — BRITISH COLUMBIA

CLAIM MAP



The property was owned by G. Blaney of Vancouver from the 1950's to 1970. R.L. Loudon of Southwest Potash made a brief examination of the property in 1964.

During 1968 Scurry-Rainbow optioned and carried out a limited amount of work on the property.

West Coast Mining and Exploration staked the property in 1970. They carried out geological mapping, geochemical sampling, and a magnetometer as well as an EM-16 survey over the present grid area. Their work outlined several geochemical and magnetic anomalies and indicated the presence of several breccia zones to the south of the old workings which had been the site of earlier efforts.

Seven holes, totalling 1,800 feet were drilled within or near breccia zones during 1971. Each of the holes intersected minor amounts of molybdenite mineralization. Hole #7 yielded by far the best intersection from 70 to 120 feet for a total of 50 feet averaging 0.22% Mo (approximately 0.3% MoS₂).

The property reverted to Veerman and Botel when West Coast Mining and Exploration, a syndicate, was disbanded. They submitted the property to AMAX in August of 1973.

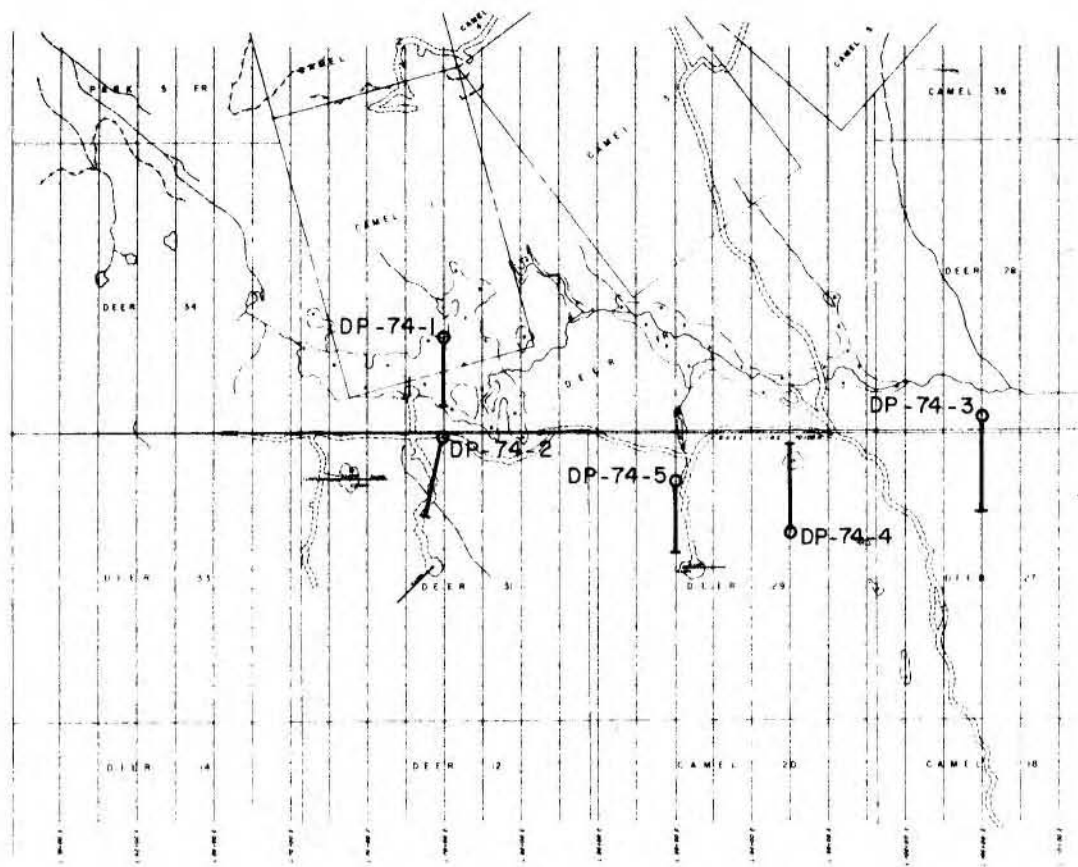
During October 1973, a grid was cut over the central portion of the property. Geological mapping, soil sampling, a magnetometer and an induced polarization survey were carried out over the grid.

DIAMOND DRILLING PROGRAM

The diamond drilling contract was awarded to Cameron McCutcheon Drilling Limited of Vancouver for a minimum of 2500 feet of BQ core (1-7/16" diameter).

Drilling commenced on June 23, 1974 and was completed by July 22, 1974. A total of 2890 feet was drilled in five holes as shown on appended sections.

Andesite, breccia, syenite, aphanitic feldspar porphyry and monzonite were encountered in the holes. Mineralization



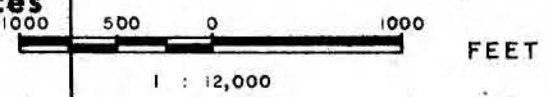
L E G E N D

- Claim post, claim location line.
- Claim boundary.
- Road.
- Stream.
- Swamp.
- Cliff face.
- Old D.D.H.
- DP-74-1 Diamond drill hole.

AMAX EXPLORATION INC.

DEER PARK PROPERTY
 TRAIL CREEK MINING DIVISION — BRITISH COLUMBIA

Department of
DIAMOND DRILL HOLE LOCATION
 Mines and Petroleum Resources
 ASSESSMENT REPORT
 NO. **5101** MAP **#3**



H.P.
 N. T. S. Ref. 82 E 8
FIG. 3

included pyrite, magnetite and minor to trace amounts of molybdenite and sphalerite.

Results of the program are represented by the logs and sections appended to the report.

D.D.H. #1 located on Camel #1
#2 located on Deer #31
#3 located on Deer #28
#4 located on Deer #29
#5 located on Deer #29

Drill core is stored on the property.

H. W. Sellmer

H.W. Sellmer

TABLE I - CLAIM STATUS

<u>Claim No.</u>	<u>Record No.</u>	<u>Anniversary Date</u>	<u>Rental Date</u>	<u>Group</u>
Deer 11	4481	August 6, 1980	August 6, 1976	Green
12	4482	August 6, 1982	August 6, 1978	Green
13	4483	August 6, 1980	August 6, 1976	Green
14	4484	August 6, 1980	August 6, 1976	Green
15	4485	August 6, 1980	August 6, 1976	Green
16	4486	August 6, 1980	August 6, 1976	Green
17	4487	August 6, 1978	August 6, 1976	Green
18	4488	August 6, 1978	August 6, 1976	Green
19	4489	August 6, 1978	August 6, 1976	Green
20	4490	August 6, 1978	August 6, 1976	Green
27	4515	August 10, 1980	August 10, 1976	Blue
28	4516	August 10, 1978	August 10, 1975	Red
29	4491	August 6, 1982	August 6, 1978	Blue
31	4492	August 6, 1982	August 6, 1978	Green
33	4493	August 6, 1982	August 6, 1978	Green
34	4494	August 6, 1979	August 6, 1976	Yellow
35	4495	August 6, 1980	August 6, 1976	Green
36	4496	August 6, 1980	August 6, 1976	Green
37	4497	August 6, 1978	August 6, 1976	Green
38	4498	August 6, 1978	August 6, 1976	Green
39	4499	August 6, 1978	August 6, 1976	Green
40	4500	August 6, 1978	August 6, 1976	Green
Deer Fr.	4467	August 6, 1978	August 6, 1975	Red
Park 6	4458	August 6, 1979	August 6, 1976	Yellow
7	4459	August 6, 1980	August 6, 1976	Green
8	4460	August 6, 1978	August 6, 1976	Yellow
9	4461	August 6, 1980	August 6, 1976	Green
10	4462	August 6, 1978	August 6, 1976	Yellow
11	4463	August 6, 1978	August 6, 1976	Green
12	4464	August 6, 1978	August 6, 1976	Yellow
14	4468	August 6, 1978	August 6, 1976	Yellow
15	4469	August 6, 1978	August 6, 1976	Yellow
16	4470	August 6, 1978	August 6, 1976	Yellow
17	4471	August 6, 1978	August 6, 1976	Yellow
18	4472	August 6, 1978	August 6, 1976	Yellow
19	4473	August 6, 1978	August 6, 1976	Yellow
20	4474	August 6, 1978	August 6, 1976	Yellow
21	4475	August 6, 1978	August 6, 1976	Yellow
22	4476	August 6, 1978	August 6, 1976	Yellow
23	4477	August 6, 1978	August 6, 1976	Yellow
24	4478	August 6, 1978	August 6, 1976	Yellow
Park Fr.	4465	August 6, 1979	August 6, 1976	Yellow
Park 5 Fr.	4466	August 6, 1979	August 6, 1976	Yellow

Table I - Continued

<u>Claim No.</u>	<u>Record No.</u>	<u>Anniversary Date</u>	<u>Rental Date</u>	<u>Group</u>
Camel 1	5148	March 14, 1976	March 14, 1975	Yellow
2	5149	March 14, 1976	March 14, 1975	Yellow
3	5197	Sept. 18, 1978	Sept. 18, 1975	Red
4	5198	Sept. 18, 1978	Sept. 18, 1975	Red
5	5199	Sept. 18, 1978	Sept. 18, 1975	Red
6	5200	Sept. 18, 1978	Sept. 18, 1975	Red
7	5201	Sept. 18, 1977	Sept. 18, 1975	Red
8	5202	Sept. 18, 1977	Sept. 18, 1975	Red
9	5203	Sept. 18, 1977	Sept. 18, 1975	Red
10	5204	Sept. 18, 1977	Sept. 18, 1975	Red
11	5205	Sept. 18, 1976	Sept. 18, 1975	Blue
12	5206	Sept. 18, 1976	Sept. 18, 1975	Blue
13	5207	Sept. 18, 1976	Sept. 18, 1975	Blue
14	5208	Sept. 18, 1976	Sept. 18, 1975	Blue
15	5209	Sept. 18, 1976	Sept. 18, 1975	Blue
16	5210	Sept. 18, 1976	Sept. 18, 1975	Blue
17	5211	Sept. 18, 1976	Sept. 18, 1975	Blue
18	5212	Sept. 18, 1976	Sept. 18, 1975	Blue
19	5213	Sept. 18, 1976	Sept. 18, 1975	Blue
20	5214	Sept. 18, 1976	Sept. 18, 1975	Blue
21	5215	Sept. 18, 1976	Sept. 18, 1975	Blue
22	5216	Sept. 18, 1976	Sept. 18, 1975	Blue
23	5217	Sept. 18, 1976	Sept. 18, 1975	Blue
24	5218	Sept. 18, 1976	Sept. 18, 1975	Blue
25	5219	Sept. 18, 1977	Sept. 18, 1975	Blue
26	5220	Sept. 18, 1976	Sept. 18, 1975	Blue
27	5221	Sept. 18, 1977	Sept. 18, 1975	Red
28	5222	Sept. 18, 1977	Sept. 18, 1975	Red
29	5223	Sept. 18, 1976	Sept. 18, 1975	Blue
30	5224	Sept. 18, 1976	Sept. 18, 1975	Blue
31	5225	Sept. 18, 1976	Sept. 18, 1975	Blue
32	5226	Sept. 18, 1976	Sept. 18, 1975	Blue
33	5227	Sept. 18, 1976	Sept. 18, 1975	Blue
34	5228	Sept. 18, 1976	Sept. 18, 1975	Blue
35	5229	Sept. 18, 1977	Sept. 18, 1975	Red
36	5230	Sept. 18, 1978	Sept. 18, 1975	Red
37	5231	Sept. 18, 1976	Sept. 18, 1975	Blue
38	5232	Sept. 18, 1976	Sept. 18, 1975	Blue
39	5233	Sept. 18, 1976	Sept. 18, 1975	Blue
40	5234	Sept. 18, 1976	Sept. 18, 1975	Blue
41	5235	Sept. 18, 1976	Sept. 18, 1975	Blue
42	5236	Sept. 18, 1976	Sept. 18, 1975	Blue

H. W. Sellmer - STATEMENT OF QUALIFICATIONS

1964 B.Sc. Geology (Honours) University of B.C.

1966 M.Sc. Geology University of B.C.

Amax Exploration, Inc. - May 1, 1966

Staff Geologist - Planned, organized and supervised small property and prospect evaluation programs utilizing geochemical, geophysical and geological techniques. Assessed results and proposed new programs.

1970 - District Geologist -

Supervised all exploration work in a district. Interpreted the results of all exploration techniques in terms of major program objectives. Recommended mineral properties for option and favourable geological areas for prospecting programs. Handled preliminary negotiations for mineral properties, reviewed and prepared exploration contracts. Planned, organized and supervised and reported on all exploration programs in a district.

1974 - Regional Manager-Western Canada-

Overall responsibility for the exploration effort of the Company in Western Canada.

APPENDIX II

AGREEMENT

This Agreement made this 6th day of February, 1974

BETWEEN AMAX EXPLORATION, INC.
601-535 Thurlow Street
Vancouver, B.C.
V6E 3L6

AND (hereinafter referred to as the "COMPANY")
CAMERON McCUTCHEON DRILLING LIMITED AND/OR *McCutcheon*
CANADIAN MINE SERVICES LTD.
620 - 475 Howe Street
Vancouver, B.C.
V6C 2B7

(hereinafter referred to as the "CONTRACTOR")

WHEREAS the COMPANY hereby requests that the CONTRACTOR carry out certain surface diamond drilling and other services, on the COMPANY'S property located 17 miles west of Castlegar British Columbia

AND WHEREAS the CONTRACTOR hereby agrees to perform said diamond drilling and other services requested, under the terms and conditions hereinafter contained.

1. SCOPE OF WORK

The work is to consist of a series of drill holes, drilled at locations specified by the COMPANY. A total minimum footage of 2,500 feet shall be drilled, but total footage may be extended beyond that amount, by mutual consent. Holes shall be drilled with BQWL tools producing 1 7/16" diameter core, as far as is reasonably practical. Maximum depth of any hole shall not exceed 1,500 feet, and minimum depth shall be 300 feet. Angles of holes shall be from minus 45 to minus 90 degrees.

2. COMMENCEMENT AND EXECUTION OF WORK

Work shall be commenced within the time limits specified by the COMPANY. Drilling operations shall be carried out with two shifts working seven

2. (Cont'd)

days per week or as near that schedule as can reasonably be maintained.

3. THE CONTRACTOR HEREBY COVENANTS AND AGREES:

- a) To provide all of the required drilling machinery and associated tools including, but not limited to, one track mounted model 38 drill capable of drilling BQ core to a depth of 1500 feet.
- b) That drilling crews will follow good drilling practice and shall use due care and diligence as shall enable them to recover as high a percentage of core as the nature of the ground being drilled shall permit. All cores shall be delivered to the COMPANY, in boxes provided by the CONTRACTOR at the drill sites.
- c) That it shall be responsible for, and will pay promptly all costs and charges, incurred by itself for labour, machinery, tools and supplies used in completing the work hereunder so that no lien or other such charge relative to the CONTRACTOR, may be registered against the COMPANY or the property. The CONTRACTOR shall be responsible for the payment of all assessments for Workmen's Compensation, Holiday Pay, Canada Pension, Unemployment Insurance, Sales Taxes, or other such applicable charges relative to its own labour and supplies purchased.
- d) The CONTRACTOR shall, at all times, enforce strict discipline and maintain good order among its employees and shall not retain on the work any unfit person or anyone not skilled in the work assigned to him. Any employee who is objectionable or unsatisfactory to the COMPANY shall be removed from the work and replaced by an employee satisfactory to the COMPANY.
- e) The CONTRACTOR shall keep his camp and drill sites free from waste and rubbish, and at the completion of his work he shall leave the camp area and all drill sites as nearly as possible in the condition such as it was prior to the commencement of the work (see Section 6f).
- f) The CONTRACTOR and its employees shall not disclose any information obtained in the course of the work performed or show cores or other samples procured in connection to third parties.

4. THE COMPANY HEREBY AGREES:

- a) Should cavities, loose or caving ground or excessive water flows be encountered in a hole so that further drilling in that hole is deemed impracticable, that hole may, by mutual consent, be abandoned, and, the CONTRACTOR be paid at rates so specified herein for all footage completed in that hole. However, should the COMPANY request that further work be carried out in the hole beyond this point, then the CONTRACTOR shall continue work in the hole, but such continuing work shall be at SITE COST rates.

- k) Truck rental: CONTRACTOR shall provide pickup for crew transportation and service at no cost to the COMPANY.
- l) Core boxes: If furnished by CONTRACTOR at \$5.00 per tray, including lids.
- m) Camp: CONTRACTOR will furnish room and board for its personnel. If possible CONTRACTOR will board COMPANY personnel at a cost of \$3.50 per meal.
- n) Site Costs where applicable shall be:
 - i) Labour \$10.00 per man hour
 - ii) Equipment \$11.00 per operating hour
\$ 6.00 per non operating hour
 - iii) Supplies consumed or lost in borehole at field replacement cost
- o) Demobilization of men and equipment - \$1200.00

6. INSURANCE AND GENERAL

- a) The CONTRACTOR, at its own cost, shall maintain insurance to the following limits; Liability and Property Damage \$1,000,000.00, Automobile Insurance coverage \$1,000,000.00. CONTRACTOR shall furnish the COMPANY on demand, insurer's certificates evidencing the existence of such insurance, which certificates shall specifically state that the policy covers the above mentioned requirements and stipulates that the policy shall not be modified or cancelled unless ten (10) days prior written notice thereof is furnished to the COMPANY.
- b) The CONTRACTOR agrees to indemnify AMAX, and its directors, employees and agent from all loss and expense including any court costs and other legal expenses arising out of all claims, demands, actions, processes and suits of every nature and kind whatsoever incident to or resulting from the operations of CONTRACTOR or of any subcontractor or agent or employee of the CONTRACTOR or any of them.
- c) The CONTRACTOR shall comply with all applicable municipal, provincial, territorial and federal legislation and regulations dealing with forest fires (by bringing in the necessary fire fighting equipment), pollution or similar matters and will be responsible for any violations of such legislation and regulations by him, his sub-contractors, and his employees, while providing services to the COMPANY hereunder.
- d) The CONTRACTOR shall not be held liable for any loss or damage suffered by reason of any cause beyond its active control such as riots, strikes, lockouts, Acts of God, or failure of transportation.
- e) Under the foregoing terms and conditions the CONTRACTOR does not guarantee to drill any hole to any specified depth. The CONTRACTOR will however, expend every reasonable effort to complete all holes to the satisfaction of the COMPANY.

f) The CONTRACTOR shall invoice the COMPANY semi-monthly for footage drilled and other services performed. Such invoices shall be due and payable within 30 days of invoice date. The COMPANY shall withhold \$2,000.00 from the last invoice until the drill sites have been cleaned up to the satisfaction of the COMPANY'S representative.

IN WITNESS WHEREOF the parties hereunto affixed their corporate seals in the presence of their respective proper officers first duly qualified in that behalf as of the day and year first above written.

727
The Corporate Seal of)
CAMERON McCUTCHEON DRILLING)
LIMITED AND/OR)
CANADIAN MINE SERVICES LTD.)
was hereunto affixed in the)
presence of)

*RC Norton, Vice Pres + Sec.
Grouse, V.P. - 08.*

The Corporate Seal of)
AMAX EXPLORATION, INC.)
was hereunto affixed in the)
presence of)

By: *Anthony D. Manna*
Vice President

Attest: *Joseph Schisler*
Assistant Secretary

APPENDIX III

CM

CAMERON McCUTCHEON DRILLING LIMITED

DIAMOND DRILLING CONTRACTORS

Telephone: 685-2261
Telex: 04-54311

619-620-475 Howe Street
Vancouver, B.C.
V6C 2B7

August 8, 1974



Amax Exploration, Inc.,
601 - 535 Thurlow Street,
Vancouver, B.C.
V6E 3L6

Invoice #23
Job 290

July 1974 Billing

Footage Drilled:

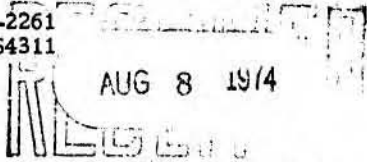
Hole #DD1	15' - 500' = 485' BQ drilling @ \$9.25 per foot	\$4,486.25	
Hole #DD3	0' - 500' = 500' BQ drilling @ \$9.25 per foot	4,625.00	
	501' - 695' = 195' BQ drilling @ \$9.50 per foot	1,852.50	
Hole #DD4	0' - 36' = 36' overburden drilling @ \$10.00 per foot	360.00	
	37' - 500' = 464' BQ drilling @ \$9.25 per foot	4,292.00	
Hole #DD5	0' - 23' = 23' overburden drilling @ \$10.00 per foot	230.00	
	24' - 500' = 477' BQ drilling @ \$9.25 per foot	<u>4,412.25</u>	\$20,258.00

Schedule "A" (attached):

101 man hours @ \$10.00 per hour	1,010.00	
Plus 10%	<u>101.00</u>	1,111.00

CM**CAMERON McCUTCHEON DRILLING LIMITED**

AMAX DIAMOND DRILLING CONTRACTORS

Telephone: 685-2261
Telex: 04-54311619-620-475 Howe Street
Vancouver, B.C.
V6C 2B7

Page 2

VANCOUVER OFFICE

Balance brought forward

\$21,369.00

Equipment Rental:

21 hours operating @ \$11.00 per hour	\$ 231.00	
Plus 10%	<u>23.10</u>	254.10

9 cat hours @ \$8.00 per hour		72.00
-------------------------------	--	-------

Acid Tests:

6 man hours @ \$10.00 per hour	60.00	
Plus 10%	<u>6.00</u>	66.00

Supplies:

2 feet casing @ \$12.60 per foot	\$ 25.20	
1 BW Casing Shoe #10ZW298	131.48	
3 x 100 #/bags cal seal cement		
Thussen Equipment #14,311	<u>48.95</u>	
Plus 10%	<u>205.63</u>	
	<u>20.56</u>	226.19

Unloading & Hauling Equipment to Site:

W. G. Bannert Invoice		
13 hours @ \$14.00 per hour	182.00	
Plus 10%	<u>18.20</u>	200.20

Demobilization:1,200.00\$23,384.49N.B. Invoice for off highway truck
during demobilization to follow.

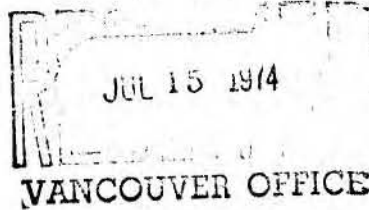
CM

CAMERON McCUTCHEON DRILLING LIMITED

DIAMOND DRILLING CONTRACTORS

Telephone: 685-2261
Telex: 04-54311

619-620-475 Howe Street
Vancouver 1, B.C.



July 11, 1974

Amax Exploration, Inc.,
601 - 535 Thurlow Street,
Vancouver, B.C.
V6E 3L6

Invoice #20
Job #290

JUNE 1974 BILLING

Mobilization

\$1,200.00 ✓

Footage Drilled:

Hole #DD2 0' - 20' = 20' overburden
drilling @ \$10.00 per foot 200.00 ✓

21' - 500' = 480' BQ drilling
@ \$9.25 per foot 4440.00 ✓

501' - 695' = 195' BQ drilling
@ \$9.50 per foot 1852.50 ✓

Hole #DD1 0' - 6' = 6' overburden
drilling @ \$10.00 per foot 60.00 ✓

7' - 15' = 9' BQ drilling
@ \$9.25 per foot 83.25 ✓ 6,635.75 ✓

Schedule "A" (Attached)

123 man hours @ \$10.00 per hour *check on* 1230.00 ✓
Plus 10% *may's daily sheets* 123.00 ✓ 1,353.00 ✓

Equipment Rental:

8½ hrs. operating @ \$11.00 per hour 93.50 ✓
Plus 10% 9.35 ✓ 102.85 ✓

Balance carried forward

.....2

*July 18/74 Called Bud McDonald - 685-2261
re: 10% charged here.
He said sec.(n) of contract "defines"
site cost and there is always 10%
added.*

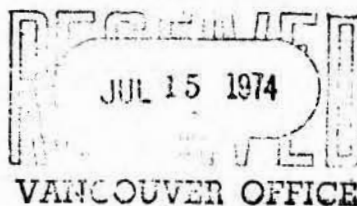
3357 JUL 18 '74

CM

CAMERON McCUTCHEON DRILLING LIMITED

DIAMOND DRILLING CONTRACTORS AX

Telephone: 685-2261
Telex: 04-54311



619-620 - 475 Howe Street
Vancouver, B.C.
V6C 2B7

- 2 -

Balance brought forward			\$9,291.60 ✓
June 29th and 30th 4½ cat hours @ \$8.00 per hour			36.00 ✓
Acid Tests:			
4 man hours @ \$10.00 per hour		\$40.00 ✓	
Plus 10%		<u>4.00</u> ✓	44.00 ✓
Core Boxes:			
100 only core boxes @ \$5.00 each			<u>500.00</u> ✓
			<u>\$9,871.60</u> ✓

APPROVED		DATE
Project	Exp. Code	AMOUNT
3671	587	9,871.60
CK# 3357		JUL 18 '74

Wickmans copy - No.

AMAX EXPLORATION, INC.
535 THURLOW STREET,
VANCOUVER 5, B.C.

PURCHASE ORDER

14853

THIS NUMBER MUST APPEAR ON ALL INVOICES, PACKAGES, ETC.

TO *Koykin Bros Cont. Ltd*

ADDRESS *Box 99, Sloan Park BC.*

SHIP TO

ADDRESS *VANCOUVER C.*

REQ. NO. OR DEPT.

DATE

FOR

JUN 29 1974

PLEASE NOTIFY US IMMEDIATELY IF YOU ARE UNABLE TO SHIP COMPLETE ORDER BY DATE SPECIFIED

QUANTITY	PLEASE SUPPLY ITEMS LISTED BELOW	PRICE
1	30 hrs. Cat work (D6C) @ \$25/hr	750 00
2		
3	Project # 587	
4		
5		
6		
7		
8		
9		
10		

ck # 3231
June 18/74
ck - MSL

DATE REQUIRED

HOW SHIP

PLEASE SEND

COPIES OF YOUR INVOICE

TERMS

Jim Mathewson
PURCHASING AGENT

APPENDIX IV


Company Amax Exploration, Inc. Project #587
 Mining Property Deer Park Option
 Division Trail Creek Started June 30, 1974
 Geographic 118°01'30" Completed July 5, 1974
 Coordinates 49°20'30" Logged by J.K.Mortensen

Bearing Due South
 Inclination - 44.5°
300' - 47°
 Depth 500'

Sheet 1 of 3 Hole No. 1
 Coordinates 78+00E
75+22N
 Altitude _____

Footage		Core Rec	% Rec											Remarks	
0	8														0-8 Overburden
															8-16 Altered pink syenite porphyry - weakly magnetic due to large amount magnetite with some hematite as fracture fillings and disseminated through core. Some pyrite mainly disseminated limonite alteration of iron minerals along fractures and to some extent throughout core is evident. Rock is well fractured, fractures show no apparent orientation.
															16-41 Grey syenite porphyry-grading to andesite feldspar in last 6'. Phenocrysts in porphyry range up to 1/2" in diameter. Mafics contained in the syenite are primarily biotite mica. Little or no magnetic character. Well fractured from 16 - 26', fractures at 8° to 40° to core axis, primarily 15° of frequency 2/inch to 3/foot. Poorly fractured from 26 to 41' (<1/ft) at angles 0° to 35° to core axis. Chloritization along fractures at 26'. Small amounts of magnetite, pyrite and hematite disseminated through core.
															41-336 - Pink syenite porphyry-moderately fractured, 1-6/foot at angles 20° to 70° to core axis, primarily 50°. Very weak magnetic character except near concentrations of magnetite. Andesite feldspar porphyry dykes at 88 to 89', 93 to 100' and 145 - 152'; andesite dykes at 249 - 251'. Quartz vein showing little mineralization at 201-203.

Hole No. 1
Sheet of

Footage	Core Rec	% Rec											Remarks		
															469-480 - Grey syenite porphyry - as above - poorly fractured (1 to 2/foot). Two sets of intersecting fractures one at 10° to core axis and one at 30° to 50° to axis. Chlorite and magnetite on fracture surfaces. MoS ₂ disseminated in core 477 to 479' in small amounts.
															480-500 - Breccia - well fractured (4/inch to 2/foot) at angles 39° to 65° to core axis. Two shear zones are visible at 490 to 491' and at 498-500'. Chlorite and small amounts of epidote and magnetite are present in these zones. Pyrite present in small amounts (<0.5%) disseminated and as fracture filling at 491' with MoS ₂ and magnetite.
															500' End of Hole
															 Logged by: J.R. Mortensen

Company Amax Exploration, Inc. Project #587 Bearing S10°W Sheet 1 of 4 Hole No. DP-74-2
 Mining Deer Park Option Property Deer Park Option Inclination 0-45.5° Coordinates _____
 Division Trail Creek Started June 23, 1974 300-50 77+78E
 Geographic 118°01'30" Completed June 29, 1974 605-48° 69+97N
 Coordinates 49°20'30" Logged by J.K. Mortensen Depth 695' Altitude _____

Footage	Core Rec	% Rec								Remarks
										0-12 Overburden
										12-94.7 Breccia - clasts from 1/2 to 8" in dia., include medium grained feldspar porphyry, pink and grey, syenite porphyry, and minor amounts of rhyolite Pyrite, magnetite and minor amounts of hematite appear as crystalline coatings on fracture surfaces. Pyrite is abundant from 0.5 to 1% as crystals in vuggy cavities with magnetite and disseminated throughout rock. Magnetite locally abundant on and near fractures and along fragment boundaries also as large crystalline blebs. Well fractured (from 3/4 inch to 1/foot) at angles 30° to 60° primarily 45° to core axis. Fluorite as small patches and in irregular veinlets. 1/4" fluorite stringers at 42.4' and 56.7'. Irregular pyrite stringers occur infrequently.
										94.7-173 - Pink syenite porphyry - feldspar phenocrysts up to 3/4" in diameter, average 1/4". Moderately fractured (2 - 3/foot) at angles 35° to 50° to core axis, primarily 40°. Pyrite is abundant (>1%) occurring infrequently as fracture fillings more commonly as small granular blebs and disseminated throughout core. MoS ₂ occurs in vuggy quartz veinlet at 133', also associated with pyrite and fluorite in small vugs throughout core

Footage	Core Rec	% Rec											Remarks		
															from 143 to 153'. Large amount fluorite as large granular blebs and along fractures. Hematite replaces magnetite near lower contact as fine crystalline coating on fracture surfaces.
															173-282 - Breccia - fragments from 1/8" to 1' in diameter mainly andesites and pink or grey syenite porphyries. A 10' section of pink syenite porphyry at 257-267' appear to be a large fragment rather than a separate rock unit as no distinct contacts are visible. Well fractured (3/4" - 1") at angles 30° to 55° to core axis, primarily 40°. Pyrite, fluorite, magnetite and hematite as fracture fillings and as large blebs. MoS ₂ in trace amounts occur with pyrite, fluorite and small amounts of hematite at 232', 247 - 250' and 272'. Pyrite becomes increasingly abundant near lower contact.
															282-293 - Coarse grained monzonite - weakly magnetic, 30% mafics, mainly biotite mica and magnetite. Poorly fractured 2 - 3/foot at 40° to core axis. Pyrite abundant (>2%) as small granular blebs and as fracture fillings. Core is cut by several small veinlets of andesite and andesite porphyry.
															293-342 - Andesite and andesite porphyry - well fractured, 3/4" to 1" at angles 10° to 90° to core axis primarily 50°. Weakly magnetic and contains small (<1/4" dia.) phenocrysts of feldspar and biotite mica. Pyrite, magnetite, and small amounts of hematite, chlorite and epidote appear as fracture fillings and as fine crystalline coatings on fracture surfaces. MoS ₂ in quartz stringers at 298' and 302'.

Footage	Core Rec	% Rec											Remarks			
																342-499 - Aphanitic feldspar porphyry - upper contact with andesite is nearly parallel to core axis (approx. 10°). Lower contact is gradational into breccia consisting almost entirely of fragments of aphanitic feldspar porphyry. Well fractured from 3/4" to 1/4" at angles 30° to 70° to core axis, primarily 50° with exception of fracture zone from 454 to 473' in which the fractures lie from 10° to parallel to the core axis. Magnetite pyrite and small amounts of hematite are present in stockwork throughout the core. Pyrite, magnetite, hematite, fluorite and some quartz also occur as fracture fillings and as small veinlets. Magnetite, pyrite and fluorite are also present in small amounts as small granular blebs. Core is also cut by several andesite porphyritic dykes ranging from 2" to 2' in width at angles of approx. 40° to core axis.
																499-550 - Breccia - fragments almost entirely made up of previous rock unit cemented by pyrite, magnetite, fluorite and some hematite. Fragments from 1/4" to 2' in diameter. Pyrite is abundant (>2%) primarily as fracture fillings and cementing fragments. Core is poorly fractured in upper part of breccia zone (<1/ft) and increases towards lower contact (3 - 4/ft). Slip planes occur at 515', 527', and 532-536', at angles 10° to 15° to core axis. Evidence of movement nearly parallel to the core axis is present. Some serpentine occurs along the slip planes.
																550-574 - Fault zone - fault plane lies at approx. 30° to core axis - heavy alteration; serpentine and pyrite are abundant; appear to be product of alteration of overlying unit (aphanitic feldspar porphyry and andesite feldspar porphyry).

Company Amax Exploration, Inc.
 Mining Trail Creek
 Division Trail Creek
 Geographic 118°01'30"
 Coordinates 49°20'30"

Project 587
 Property Deer Park Option
 Started July 6, 1974
 Completed July 12, 1974
 Logged by J.K. Mortensen

Bearing Due south
 Inclination 0' - 42.5°
695' - 45°
 Depth 695'

DP-74-3
 Sheet 1 of 4 Hole No.
 Coordinates 106+00E
71+00N
 Altitude

Footage	Core Rec	% Rec											Remarks	
														0-22 Overburden
														22-695 Breccia - sub-sections below
														22-119 - Breccia - fragments from 1/2" - 6" primarily aphanitic feldspar porphyry and pink syenite porphyry. Matrix from crystalline (syenite) to consolidated groundmass. Weak to moderately magnetic in some sections. Well fractured from 6" to 2' at angles 10° to 40° to core axis, primarily 30°. Pyrite content from 2% to 5%. Some chloritization associated with andesite clasts also along fractures in upper 40 feet of section. Small amounts hematite associated with pyrite on fracture surfaces. MoS ₂ at 74 - 76' as fine crystalline coating on open spaces in core.
														119-127 - Aphanitic feldspar porphyry - well fractured, 2" - 4', some chlorite and hematite as coatings on fracture surfaces.
														127-128.5 - Breccia - as above - clasts primarily aphanitic feldspar porphyry
														128.5-144 - Aphanitic feldspar porphyry - moderately fractured, 2" - 2' at angles 30° to 40° to core axis, primarily 30°. Considerable chemical leaching

DP-74-4

Company Amax Exploration, Inc. Project #587 Bearing Due north Sheet 1 of 3 Hole No.
 Mining Trail Creek Property Deer Park Option Inclination 0-45° Coordinates 95+92E
 Division Trail Creek Started July 14, 1974 500-48° 66+37N
 Geographic 118°01'30" Completed July 17, 1974 Altitude
 Coordinates 49°20'30" Logged by J.K. Mortensen Depth 500'

Footage	Core Rec	% Rec											Remarks	
														0-28 Overburden
														28-209 - Breccia - subsections as below
														28-158- heavily altered breccia - well fractured 6" to 5' at angles 25° to 60°, primarily 40° to core axis. Clasts mainly syenite porphyry. Rock very friable. Small amounts hematite and magnetite. Large amount limonite alteration of iron minerals. Montmorillonite on some fractures and as granular blebs in core. Andesite feldspar porphyry 112 - 121' showing somewhat less alteration than the breccia. Contact angles of dyke not measurable. Very weakly magnetic 77 to 112' ground core - 12' recovered.
														158-196 - breccia - clasts 3/4" to 2' mainly andesite and aphanitic feldspar porphyry. Matrix mainly crystalline calcite and fluorite. Poorly fractured 1' to 1/3'. No magnetic character. Hematite abundant in lower 15' of section as fracture fillings with small amounts of pyrite. MoS ₂ on fracture at 187'.
														196-209 - altered breccia - weakly magnetic; montmorillonite, pyrite and hematite on fractures and as small granular blebs in core. Well

Footage	Core Rec	% Rec											Remarks	
														fractured at angles 20° to 60°, primarily 50° to core axis. Slip plane at 204' at angle 230° to core axis - slickensides at 50° to core axis.
														209-299 Pink syenite porphyry - moderately to strongly magnetic. 209' to 220' due to large amount magnetite in stockwork with hematite and small amounts pyrite, chlorite and fluorite. Weakly magnetic 220' - 299'. Well fractured from 209' - 251', 5" to 6" at angles 10° to 50°, primarily 40° to core axis. Poorly fractured 251 to 299', 1 to 2' at angles 15° and 30° to axis, fractures in this section mainly cemented with hematite and magnetite. Core is cut by andesite dyke at 215 to 216' (upper contact at 60° to core axis, and andesite feldspar porphyry dykes at 252' - 253' and 254' - 256' (see below)
														MoS ₂ on same fractures at 214 to 230', 271-273' and 279'. Chalcopyrite occurs at 248' with hematite on fractures and from 255' to 274' on fractures and as small granular blebs in the core.
														299-306 Gradational unit - upper contact angle 30°, lower contact angle 50°. Poorly fractured, 2' at angles 15°, 30°, and 40°. No magnetic character.
														299-299.4 - andesite feldspar porphyry
														299.4-300 - grey syenite porphyry
														300 - 304 - pink syenite porphyry
														304 - 305 - grey syenite porphyry
														305 - 306 - andesite feldspar porphyry
														306-310.5 pink syenite porphyry - as above; hematite and fluorite cementing fractures

Footage	Core Rec	% Rec											Remarks
													310.5-311.5 - Andesite feldspar porphyry - very weakly magnetic; upper contact angle 30°, lower contact 60°
													311.5-355 - Pink syenite porphyry - as above- weakly to moderately magnetic in upper 23' of section due to increasing amounts of magnetite in stockwork with small amounts chlorite and hematite. Fracture angles 15°, 30° and 50°. Much chlorite in stockwork from 339'. Some brecciation from 342 to 355'. Calcite and quartz cementing fragments at 343' and as a 0.5 foot vein. MoS ₂ disseminated at 342-343, 351 and 354'
													355-429 - Breccia - weakly to moderately magnetic due to magnetite in groundmass, locally higher particularly near andesite clasts. Clasts from 1/4" - 4" mainly andesite and pink syenite porphyry. Pyritized zone (>2%) 425 to 429'. Shear zone at 403-404' at 20° to axis; slickensides at 40° to axis. 1" fluorite - quartz stringer at 412' at 20° to axis. MoS ₂ disseminated in groundmass and on fracture surfaces with pyrite, chalcopyrite, and fluorite at 362.5 to 364', 379-386', 406-407' and 426'. Also on slip planes at 403-404' with chlorite, pyrite and chalcopyrite.
													429-500 - grey syenite porphyry - some local brecciation. Phenocrysts to 1/2" in diameter, mainly K-feldspar. Weakly to moderate magnetic increasing to strongly magnetic from 480 to 500'. Well fractured from 3/in to 4/ft at angles 35° to 40°, and 60°. Large amount open space. MoS ₂ at 464 to 475' as fine crystalline coating on cavities.
													500' End of Hole

Logged by: *Jim Mortensen*
J.K. Mortensen

Sheet of

DP-74-5

Company Amax Exploration, Inc.
 Mining
 Division Trail Creek
 Geographic 118°01'30"
 Coordinates 49°20'30"

Project #587
 Property Deer Park Option
 Started July 18, 1974
 Completed July 22, 1974
 Logged by J.K. Mortensen

Bearing Due south
 Inclination 0 - 45.5°
500 - 46°
 Depth 500'

Sheet 1 of 3 Hole No. _____
 Coordinates _____
90+18E
67+44N
 Altitude _____

Footage	Core Rec	% Rec											Remarks
													0-5 Overburden
													5-214 Monzonite - K-feldspar 60-65%, plagioclase feldspar 30%, quartz 10-15%. Very weakly magnetic 5 to 71'. Moderately to strongly magnetic 71 - 111' due to large amount magnetite in stockwork with hematite and pyrite and as large granular blebs with hematite, pyrite and some chalcopyrite. Combined hematite/magnetite content to 30% of rock at 71, 92-94, 145-147, and 160-161'. Individual grains not apparent in the section 132-179' and the rock approaches aphanitic in texture, showing some phenocrysts of K-feldspar. Andesite dykes from 190 to 195' (upper contact angle 15°, lower contact 30° to core axis), 197-204' (upper contact 50°, lower contact 25° to axis), and 210-213 (upper contact 25°, lower contact 60° to axis). Moderately fractured 5 to 70' and 132 to 179' at angles 5° to 70° to axis. Well fractured 70 to 132' and 179 - 214' at all angles showing no apparent orientation. Fractures from 70 to 214' mainly cemented with magnetite pyrite and hematite. One inch quartz vein at 96' with magnetite, pyrite and traces of chalcopyrite and MoS ₂ . Chlorite present on fractures and disseminated in core from 179-214'

Footage	Core Rec	% Rec											Remarks		
															214-229 - gradational unit 214-214.5 - andesite feldspar porphyry 214.5-228.5 - grey syenite porphyry 228.5-229 - andesite feldspar porphyry
															Phenocrysts mainly K-feldspar with some plagioclase feldspar and biotite mica. Weakly magnetic throughout, increasing slightly near contacts. Upper contact angle 60°, lower contact 55° to axis. Moderately fractured 2/in. to 2/foot at angles 20° and 60° to core axis. MoS ₂ on fracture at 225' with pyrite and fluorite.
															229-288 - Monzonite - as above - chlorite cementing fractures with hematite, magnetite and pyrite. Biotite rich andesite dyke at 257-272' (upper contact 10°, lower contact 15° to core axis). MoS ₂ as fine crystalline coating as fractures at 251' and 272'. Chalcopyrite disseminated in small amounts at 287'.
															288-299 - Biotite rich andesite - no magnetic character. Upper contact 40°, lower contact 30°.
															299-315 - Pink syenite porphyry - phenocrysts mainly K-feldspar, increasing in size to 1/2" in diameter at lower contact. No magnetic character. Moderately fractured 2 to 6/ft at angles 50 to 60° to core axis. Chlorite, hematite and pyrite on fractures.
															315-322 - biotite/chlorite - rich andesite dyke - no magnetic character. Well fractured 6/in to 3/ft

Footage	Core Rec	% Rec											Remarks		
															@ angles 5 to 10° and 50 to 60° to core axis. Chlorite and fluorite as fracture fillings.
															322-500 - Monzonite - 50% K-feldspar, 35% to 50% plagioclase feldspar, 0 to 10% mafics, mainly biotite and some magnetite 0 to 5% quartz. Very weakly magnetic, increasing to moderately magnetic in lower 15' of hole (due to more magnetite as mafics in the monzonite) locally higher near concentrations of magnetite or fracture fillings. Poorly to moderately fractured 3/in to 1/3 ft at angles 0 to 10° and 30 to 35° to core axis. Fractures at 345 to 347' running parallel to axis. At 350-352' two sets of fractures parallel to axis and intersections at 30°. Much chlorite on fracture surfaces with small amounts pyrite, magnetite and hematite. MoS ₂ in vuggy cavities with fluorite, pyrite and magnetite at 353'
															500' End of Hole
															Logged By: <i>Jim Mortensen</i> J.K. Mortensen