

5112

PROSPECTOR'S REPORT

ON

92F/3W

BEAR GROUP OF CLAIMS:

REFERENCE NUMBERS - Black Bear - 293
- Cinnamon Bear - 294
- Grizzly Bear - 300
- Ironside - 487

LOCATIONS:

On the West side of Kennedy River, approximately 1 1/2
Miles South of Canoe Creek or 3 1/2 Miles North of
Kennedy Lake, on Vancouver Island.

Latitude approximately - 49° 10' 30" N.

Longitude approximately - 125° 24' 30" W.

AUTHOR:

G. Kinneard, Free Miner and Registered Owner

Free Miner's Licence 115644

Expiring December 31, 1974

FIELD WORK DONE:

August 3 & 4, 1974

DATE REPORT COMPLETED: August 8, 1974

Department of
Mines and Petroleum Resources
ASSESSMENT REPORT
NO. 5112 MAP

<u>TABLE OF CONTENTS</u>	<u>PAGE</u>
List of Figures	1
Property Description, Location and Access	2
History	4
Survey Work done in 1974	6
Field Notes	11
Cost Analysis	18
Appendices	19

LIST OF FIGURES

- #1. Map of B.C.
- #2. Topographical Map of Kennedy Lake Area
- #3. Map of Location of Claims, in relation to Kennedy River,
showing physical features and surveyed area.
- 4. Copies of Record of Mineral Claim registered to G.E. Kinneard

PROPERTY DESCRIPTION, LOCATION AND ACCESS

This Group of Claims consists of four Mineral Claims, Reference Numbers 293, 294, 300, and 487, which were Crown Granted in 1905. They were surveyed and Reference Posts put in position, by the B.C. Land Surveyor, George Smith. The shape and location of the claims are clearly shown on the Topographical Reference Map called EFFINGHAM, Reference 92F/3 West Half. Copies of this map are available from the Mines and Technical Survey Branch of the Department of Lands and Forest, B.C. Scale - 1 - 50,000, or 1 1/4 inches to 1 mile.

The general location of the claims is approximately 3 to 3 1/2 miles north of the head of Kennedy Lake.

In the early days, access to these claims was gained by boat up through Kennedy Lake and then by portage and trail along the Elk River, now called the Kennedy River. Within the last three years, a highway has been paved, running from Port Alberni through to Tofino. This new paved highway runs along the east side of the Kennedy River, giving easy access to the claims, except for the fact that one has to have a boat to cross the river, as there are no bridges within 25 miles, either direction.

The Kennedy River is approximately 75 feet across, however, in mid summer, July and August, the water is low enough that it is quite safe to cross through the shallow rapids and pools.

In order to get to the claims from Nanaimo, B.C., you follow Highway 19 northerly to Parksville. At this point you turn West going along highway 4, through the City of Port Alberni, and continuing West for approximately 40 miles. The scenery in the area is magnificent, as the road winds along canyon areas in high mountainous terrain. Unfortunately, there are very few signs or reference points. A person can get a good location on the claims by watching for the bridge at Canoe Creek, which is marked on the EFFINGHAM Map. Measuring approximately 1 to 1 1/2 miles south from Canoe Creek, you watch for a gravel pit on the east side of the road. There is a large 12 foot metal shovel abandoned in an old gravel pit, near the east side of the highway. The road to the east, leading to the remains of the nine cabins shown on the map is approximately 500 feet south of this gravel pit area.

Looking eastward from this point, one gets a spectacular view of three very sharp mountain peaks, which we named Steeple Chase Mountains, in the MacKenzie Range. The high peaks of Mt. Maitland are also visible, looking to the southwest, from this point on the paved highway.

Access to the claims is by boat, across the river, where the southeast corner post is located, almost directly in line with a gravel bar in the river, which is also shown on the EFFINGHAM map.

BRITISH COLUMBIA

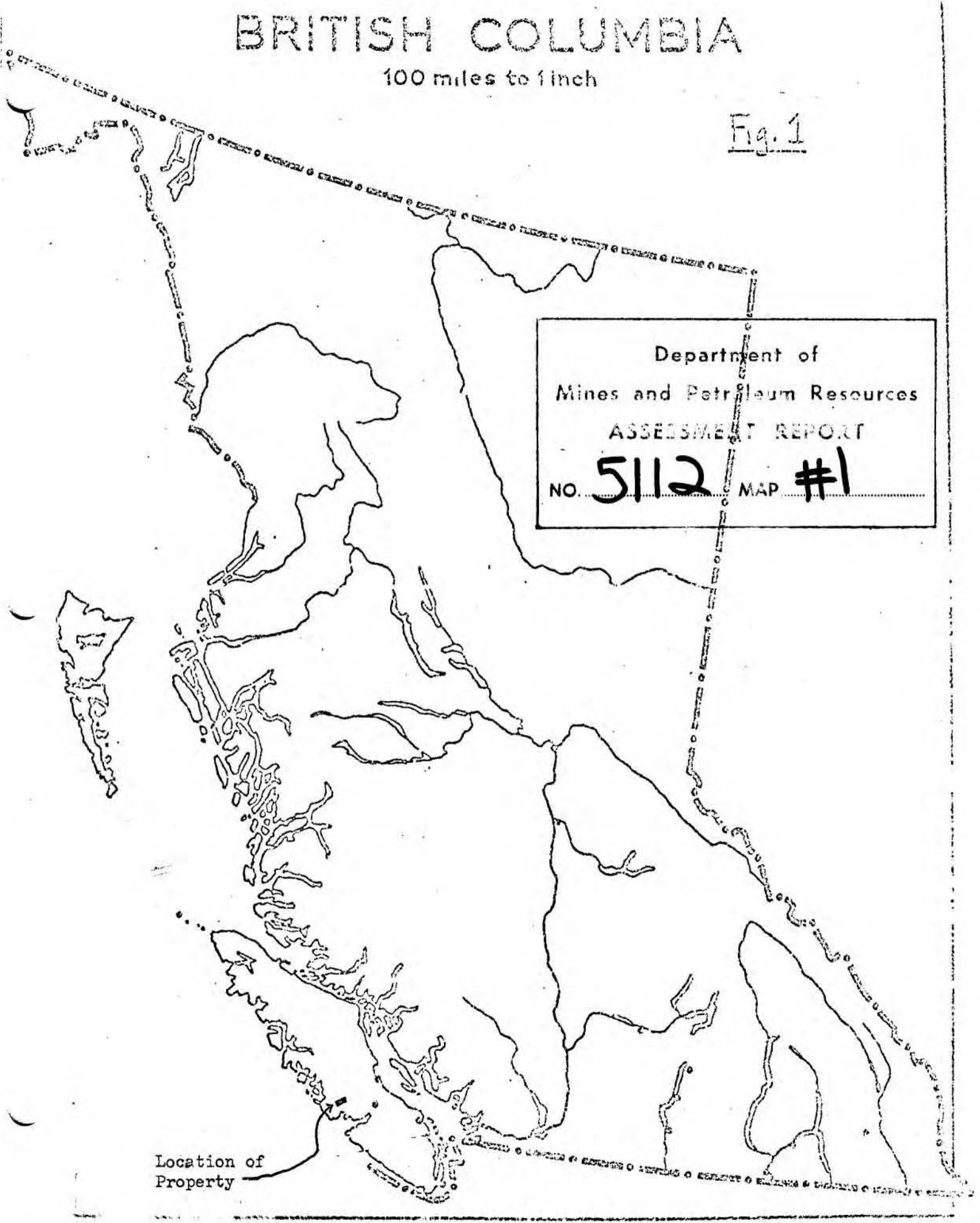
100 miles to 1 inch

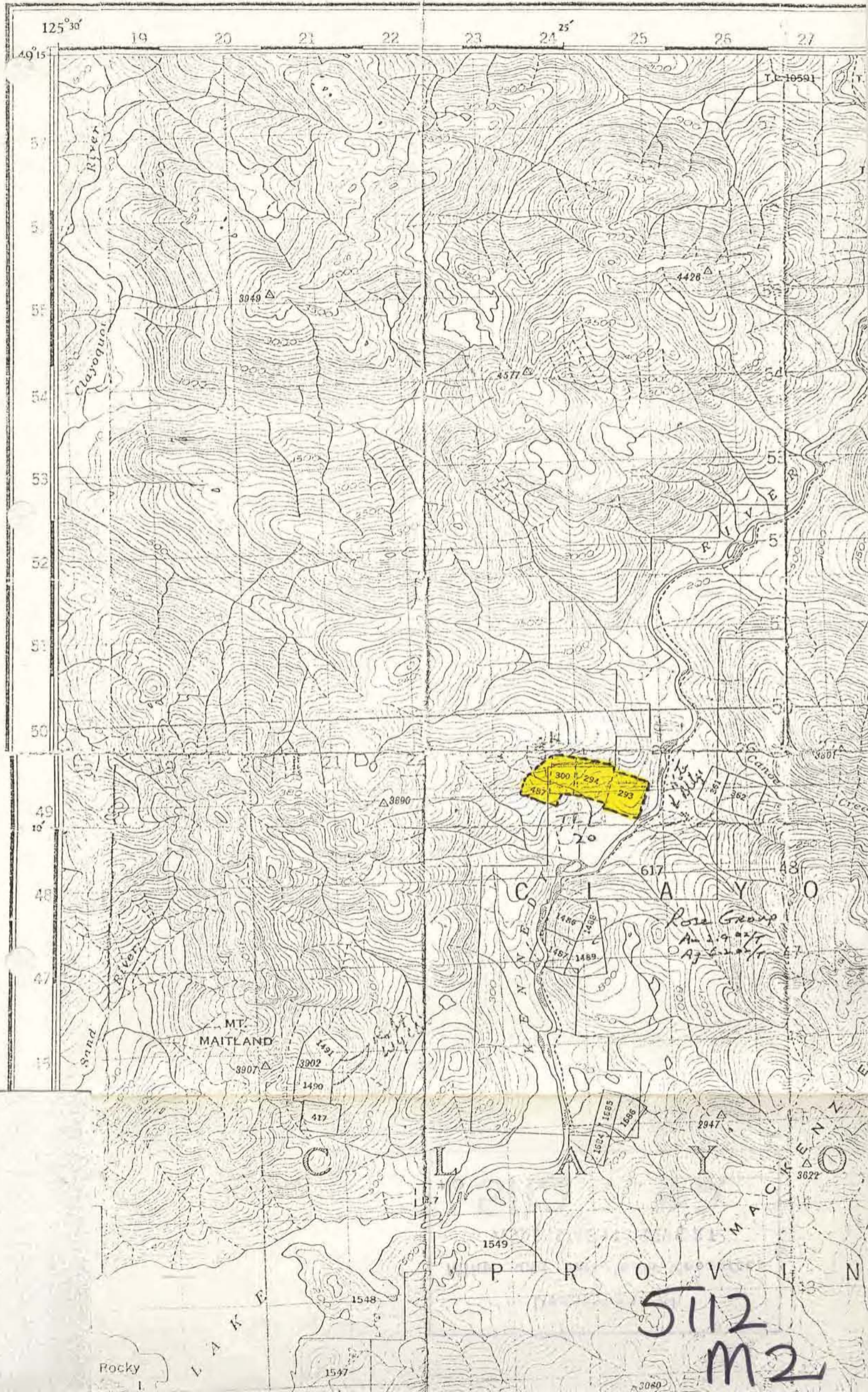
Fig. 1

Department of
Mines and Petroleum Resources
ASSESSMENT REPORT

NO. 5112 MAP #1

Location of
Property





Rose Group
Apr 19 1927
Apr 21 1927

5112
M2

HISTORY

These claims were originally staked in the period around 1899 to 1902, after the discovery of mineralization on the rock outcroppings near creeks running easterly from the high mountainous area, down toward the Kennedy River, which was previously known as the Elk River.

The claims were originally owned by Thomas O. MacKay, of the city of Victoria, who sold them to the Kennedy Lake Gold Mines Ltd., by an instrument dated the 10th day of November, 1938. The claims were surveyed by B.C. Land Surveyor, George Smith. Corner Reference Posts were put in and location lines established. He subsequently filed an Affidavit on the 9th day of July, 1905, attesting to the fact that these Reference Posts were in place. The claims show on topographical maps, under the Reference Numbers 293, 294, 300 and 487.

Brief references to these properties are made in Annual Mining Reports of 1902 and 1913, at which time the claims were called "The Bear Group". Refer to Mineral Deposit Inventory "A".

Very little information is available as to the work and the results obtained by previous owners, as there was apparently little or no requirement to report work or production in years gone by. We do know, however, that a tunnel exists on the Cinnamon Bear Claim, reported to be 246 ft. in length.

Mineralogy showed the rock to be a combination of quartz, feldspar, calcite with arsenopyrite, containing small amounts of gold. The property warrants further exploration.

SURVEY WORK - 1974 OPERATIONS

Inasmuch as the present owner has only acquired the Property recently, the first and logical step was to make a general survey of the area, to look over the geology, the terrain, and try to establish the location of Reference Posts, Location Lines and Tunnels.

During May and June, trips were made to the Kennedy Lake area, using maps to try to pinpoint the general location of these claims. The only creek noted in the area, which has a reference sign is that of Canoe Creek. Measurements were made, using the odometer of the truck from Canoe Creek South, and from Kennedy Lake North, by which we determined the approximate location of a group of cabins, being nine cabins, on an old Trail and Logging Road which is directly across the river, on the East side of Kennedy River, from the Bear Group. After a number of searches, we located the remains of these cabins, and a tunnel on the Claim 361, which are located within about 500 feet of the present paved highway, in a clump of trees.

Using the reference of the location of these nine cabins, we then measured north on the highway and south on the highway, to get a fairly clear picture of the location of the Black Bear Claim. This lies across the Kennedy River from the paved highway and consists of a fairly level area to the South. There is then

steep rising hills, forming a small mountain or hill, which rises four to five hundred feet, on the northerly two thirds of the ^{Black} Bear Claim. The other claims fall back towards the high mountainous area, to the West.

On Saturday, August 3rd., a trip was arranged, from Nanaimo, travelling north on Highway 19 to Parksville, and west on Highway 4, through Port Alberni, toward Kennedy Lake.

T. May and G. Kinneard of Nanaimo, took camping equipment, a boat, survey equipment and supplies, in order to make a trip over to the Black Bear claim, for the purpose of surveying the general geology in the area, and checking out the terrain. It was hoped that we could locate the old trail, running toward the cabin, and tunnel area, at the ore outcroppings, at the far or westerly edge of the Cinnamon Bear claim.

Starting early in the morning - 6:50 A.M. - we got equipment in order and then made a trip by boat, across the river, landing near the middle of the ^{Black} Bear claim, where the rock rises quite steeply to the west. We secured the boat and then made way up the ravines, towards the higher and steep rocky area on the Black Bear Claim. Checking the geology along the way, we noted that it was a grey blue type basalt rock (fine grain, dark shade).

Approximately 300 feet west of the river, we started placing ribbons on a random line, working our way westerly. We had

climbed to one of the highest points in the area by 9:50 A.M. It had been a cloudy day, with low lying mist and clouds, until this time. The sun started to break through and we followed a general direction of N. 50° W., placing station point ribbons approximately every 50 to 75 feet. We followed along the base of rock outcroppings and bluffs, checking the geology and noting that there were a few spots and indications of small quartz veins, but the rock in general was blue grey basalt. There were small indications of pyrite.

This area did not show any interesting signs of mineralization, so we turned approximately at a 90° angle and followed a route S. 40° W.. At Station R11-10, we noted a sign of heavy pyrite in basalt rock. Checking around the area, we found this was just a small showing and is indicative of the spotty pyrite effect in the basalt. We continued marking stations on this route up to R11-20. There was still no sign of the location line nor the trail which we had been looking for. We then made a turn westerly and followed the general direction of N. 50° W. again, marking stations up to R11-39. This brought us almost to the westerly edge of the Black Bear Claim, where we located a creek bed. We followed this down in a southerly direction, until we came to an area, which appeared to be the location line and position of Post No. 1.

Although we could not locate the original post, we did find a

large Cedar tree, approximately seven feet in diameter, which showed definite bearing marks, being approximately 12 inches high and grown in, but they were cathedral type blazes on four sides of this Cedar.

We then continued to follow the creek, going along the base of the cliffs, to the southerly area of the claim. We found these cliffs came out at the river, approximately 500 feet north of the south border of the claim. There is a definite flat area for approximately 500 feet from the mountainous steep cliffs, towards the south border of the Black Bear claim.

By this time it was getting towards 5:30 P.M., and there would not be sufficient time to make way back up the trail to the Cinnamon Bear Claim. We have established sufficient orientation on this claim to make it possible to locate, by measurement from the steep cliffs, southerly to locate the south-east corner post of the Black Bear Claim.

A further trip is planned to measure from that corner post to locate the old trail to the cabin, and eventually work a survey and random line, up the trail, across both the Black Bear Claim and the Cinnamon Bear Claim, to check out the outcroppings and tunnel on the Cinnamon Bear Claim.

A point of interest is that we did locate a small waterfall on the creek area, which runs close to the westerly edge of the Black Bear

Claim. This creek was about two to three feet across and we estimate the waterfall area to be approximately 200 feet north from the Number 1 location Post of the Black Bear claim. The rocks were stained blackish from the heavy loam type earth in this creek bed, but they proved to be only blue grey basalt. Going down this creek, southerly, to the point where it makes a turn to the East, we found that the rock changed to granitic type rock, in a small canyon like area, with the walls 20 to 30 feet high. There was no sign of mineralization in this canyon area.

BLACK BEAR, CINNAMON BEAR, IRONSIDE AND

GRIZZLEY BEAR CLAIMS - FIELD NOTES

SATURDAY, AUGUST 3, 1974

1:00 P.M. - left Nanaimo - sunny and hot - 80 degrees, clear and windy

8 miles, mileage - 69235

1:35 P.M. - 69255 - 20 miles - at Parkville

2:35 P.M. - 69285 - 30 miles - at Port Alberni - showed maps to David

Paquette.

3:45 P.M. - 69324 - 40 miles - at creek near old gravel pit with old bucket

on East side of road. (total of 90 miles one way)

Post eight inches, yellow painted top, 60 feet up gravel road,

Foresters Post, MacMillian Bloedel. Metal tag with reading:

SP - 74

SL #2

D Fir

Cabins are 200 feet up the road in clump of trees. Had lunch and checked nine old cabins, found one bottle.

7:00 P.M. - Moved to river - only road in vicinity to river.

7:20 P.M. - Met Pete Sterzenbach at campsite, bottle hunter - agreed to

10% comm ission on any valuable bottles located. Sterzenbach's

truck - B.C. Licence 735-472, Chev. ½ Ton C10. Also at campsite

Mustang Vhk-908

7:40 P.M. - Showed Pete site of old cabins (9) on East side of road.

8:00 P.M. - to

9:00 P.M. - made supper and prepared camp

9:30 P.M. - Sun three-quarters of the way up steep mountian - bed time.

SUNDAY, AUGUST 4, 1974 - Low cloud - estimated 60 degrees

6:50 A.M. - Got up, washed up and made breakfast. Had miserable night,

mos quitoes were very bad, no-see-ems worse in morning. Clear

moon light night, low cloud and fogged in about 4:00 A.M.

Mild weather - no rain.

7:30 A.M. - to

8:00 A.M. - Studied survey notes and sketches.

Plan to boat down river to next creek and sand bar to search for South East corner post of Black Bear.

- measure and survey and search for old trail

- chain and survey on old trail to try to locate outcropping and old tunnel on Cinnamin Bear - some 3000 feet up mountain.

- NOTE - Black Bear Claim is on West side of Kennedy River, appears to be rounded hill area, estimated to be 200 to 300 feet altitude, rising toward high mountains ridge to the West. Outcropping apparently is at an area where the mountain goes up steeply - 2000 to 3000 feet in.

General plan is to set up grid system, survey and list trail to mark stations, do Magnetic and Radem surveys to establish magnetic or conductive patterns to try to trace mineralization.

- Mosquitoes so thick we had fried mosquitoes and pancakes for breakfast.

8:05 A.M. - Rechecked survey notes - East boundary of Black Bear - it is North 18 degrees East (Astronomical)

North 40 degrees East (Magnetic)

9:00 A.M. - Paddled 300 feet down river and found sand bar on East side of river and large maple trees across from steep rock bank. Deep pools. Beautiful if you could cut trails in. We are 200 feet between rapids and gravel bars. Crystal clear water. Parked boat on sandy draw, at steep rock and cliff to the West of sandy draw.

9:50 A.M. - Climbed up side of draw going North 130 degrees West toward East Boundary. At top of hill - estimated 300 feet from River we started chaining and ribboned stations. Ribbons reading RL - 1.

Cloud lifting and the sun starting to show through.

Random line starting on top of mossy knoll approximately 1000 feet West of junction of creek and Kennedy River - across from logged area near the nine cabins (Rose Group).

Left my green coat at RL - 1, its to hot.

<u>Station</u>	<u>Direction</u>	<u>Distance</u>	<u>Comments</u>
RL - 2	N 38° W	71'	- to highest knoll in area looking North . (We are heading generally N 50° W - which is perpendicular to East boundary. Location Line is N 75° W (Ast.) minus 22° = 53° W (Magnitic)
RL - 3	N 50° W	45'	
RL - 4	N 50° W	60'	- base of rock bluff 30' feet high. Six feet to West small veins and quarts spots in basalt rock.
RL - 5	N 28° W	44'	- following base of rock bluff, lots of pyrite there in Mother rock.
RL - 6	N 14° W	50'	- steep cliff to West - going up it.
RL - 7	N 84° W	58'	- 50 feet us bloody steep rock Sunny - clouds breaking
RL - 8	N 70° W	40'	- on top of rock bluff

- | | | | |
|---------|---------|------|---|
| RL - 9 | N 45° W | 42' | - level , blue grey basalt
- We did not located East border
so we turned 90° to go South
40° West. |
| RL - 10 | S 40° W | 100' | - we should cross cut location line
and trail and/or South Boundary.
Crossed a small ravine, large
crevice - rock broken away
18 inches wide and 12 feet long.
Heavy pyrite in basalt - some
gold and silver fleks. |
| RL - 11 | S 40° W | 47' | - level |
| RL - 12 | S 60° W | 44' | - to edge of steep down cliff |
| RL - 13 | S 32° W | 48' | - Steep down slope |
| RL - 14 | S 40° W | 60' | - Across ravine |
| RL - 15 | S 32° W | 40' | - level |
| RL - 16 | S 32° W | 24' | - to top of another ravine, grey
basalt |
| RL - 17 | S 40° W | 100' | - across ravine - near bottom |
| RL - 18 | S 13° W | 91' | - steep up grade so we headed more
Southerly along side of ravine.
Same grey basalt. |
| RL - 19 | S 45° W | 54' | - to top of ridge, large cedar
root over turned. |
| RL - 20 | S 20° W | 72' | - top of second ridge
- Still no sign of trail nor location
line so we decided to go generally
North 50° West till we hit creek. |

1:00 P.M.

- Maybe we can find the curve in
the creek and the number one post.
Had lunch. It is sunny and clear.

RL - 21	N 42° W	87'	- Across ravine
RL - 22	N 50° W	42'	- Deep ravine to the left (50' down).
RL - 23	N 44° W	65'	- Steep down grade into ravine.
RL - 24	N 50° W	68'	- Continuing down hill. Cliffs of grey basalt.
RL - 25	N 52° W	100'	- level along side of ravine.
RL - 26	N 50° W	60'	- Angling up hill - side of ravine
RL - 27	N 48° W	66'	- "
RL - 28	N 48° W	36'	- "
RL - 29	N 44° W	73'	- Level along upper ridge. broken rock area - basalt
RL - 30	N 50° W	76'	- Steep down slope
2:00 P.M. RL - 31	N 50° W	47'	- "
RL - 32	N 50° W	82'	- "
RL - 33	N 50° W	68'	- Two-and-a-half foot cedar, maybe a bearing tree.
RL - 34	N 50° W	48'	- Down slope near bottom of ravine.
RL - 35	N 50° W	62'	- Hit bottom of ravine, is damp and a good blueberry patch.
RL - 36	N 50° W	58'	- Bottom of ravine is level, near big 5 feet in diameter and 7 foot dead fall - all are cedar trees
RL - 37	N 48° W	100'	- On bottom land - a slow down grade.
RL - 38	N 98° W	100'	- Heading Westerly down hill toward creek.
RL - 39	N 90° W	71'	- Down old creek bed.

3:00 P.M. RL - 40 N 120° W 100' - Sunny. Down slope on old creek bed.

RL - 41 N 115° W 49' - Bottom of creek bed.

3:20 P.M. Stopped recording as we followed creek bed heading South and South East. About 200 feet we hit water - a spring area and a small canyon. Wall of canyon about 30 feet high. The stream is two feet wide.

- Checked rocks - grey basalt.

- Two hundred feet further down canyon - a dam and falls. Rock changed to granite. Creek curves to the left from due South to S 40° E. Is a definite blaze in big cedar tree about eight feet in diameter. Blazes on four sides. Tree located on the East side of the creek.

- Made our way down to Kennedy River and found flat area with high timber. Location Post # 2 of the Black Bear Claim and the start of steep ascent area are right at the sand - gravel bar in the Kennedy River 100 feet South of jetting rock twenty feet into River from the West side.

5:30 P.M.- Located flat area referred to by the Surveyor. We also noted steep ascent 500 feet North of Southeast corner is the same area as the rocks that jut out into the River near a gravel bar, the last gravel bar for over a half mile to the South.

6:30 P.M. - Made our way up the River. Carried the boat through the rapids twice. Got back to camp at 7:00 P.M. We got soaked to the waist.

7:00 P.M. - to

8:00 P.M. - Changed into dry clothes and cleaned up. Had supper.

8:00 P.M. - to

9:30 P.M. - At Parkville

10:30 P.M. - Arrived back in Nanaimo. Mileage 69420

Original mileage at the start - 69235

Total Miles - - - - - 185

COST ANALYSIS

1.	<u>Transportation Costs</u> Mileage from Nanaimo to Mineral Claims on Kennedy River - Bear Group - and return 185 mi. @ 30¢ per mile - - - - -	55.50
2.	<u>Camping Supplies</u> 1 Night & 2 Days for 2 People, Food, Gas - - - - -	30.00
3.	<u>Labour</u> 2 People @ \$50.00 each X 2 Days - - - - - (Surveying, Marking Stations and Checking Geology)	200.00
4.	Writing Report, Preparing Maps and Records (Including previous research time) 2 Days - - - - -	125.00
5.	Blueprinting, Editing and Photocopying	<u>30.00</u>
	TOTAL EXPENSE CLAIMED AS ASSESSMENT WORK	440.50

APPENDICES

1. Copy of Mineral Claim Tax Sale
2. Collector's Certificate of Forfeiture
3. Assignment of Crown Granted Mineral Claims from MacKay to the Kennedy Lake Gold Mines
4. Copy of our Record of Mineral Claim, currently dated Feb. 19/74.
5. Mineral Deposit Inventory Sheet
6. Map of location of claims 293 and 294, in relation to Kennedy River, showing area surveyed August 3 & 4, 1974.

Please furnish me with the state of title in respect to the undermentioned, QUOTING ADDRESS IN EVERY CASE

Black Bear

H. W. Jordan,

Provincial Collector

Black Bear

DEC. 3 1948

THE GOVERNMENT OF
SOUTH AFRICA
DEPARTMENT OF MINES

TAXATION

ACT.

THE GOVERNMENT OF
THE PROVINCE OF NORTHERN CAPE

MINERAL CLAIM TAX SALE.

3a / 122
17
10

In the Beneficial Titles

VICTORIA, B.C.

ALBANI

B.C.

NOVEMBER 24th, 1948. Date

Description of Mineral Claim:
Black Bear, Lot 293,
Municipal District.

ASSESSED OWNER:

Kennedy Lake Gold Mines Ltd.

I hereby certify that the above mineral claim was offered for sale by me at tax sale held on
NOVEMBER 1st, 1948
and that there was no bid made for same.

Please furnish me with the state of title in respect to the undermentioned, QUOTING ADDRESS IN EVERY CASE

H. W. Jordan,

Provincial Collector

C

DEC 3

THIS FORM IS AN
EXHIBIT TO THE
ACT TO REGULATE
THE SALE OF
MINERAL CLAIMS

TAXATION



ACT

Sinnamon Bear

MINERAL CLAIM TAX SALE.

15/11/48
11/11/48
9/11/48

To the Registrar of Titles

BRITISH COLUMBIA, B. C.

Alberta

B.C.

(Date: November 24th, 1948)

Full Description of Mineral Claim:

"Sinnamon Bear" Lot 224, Jasper District

Name of Proposed Owner:

W. W. Lord Inc.,

I hereby certify that the above mineral claim was offered for sale by me at tax sale held on
November 1st, 1948 and that there was no bid made for same.

Please furnish me with the state of title in respect to the undermentioned. QUOTING
ADDRESS IN EVERY CASE.

W. W. Lord Inc.
W. W. Lord Inc., Provincial Collector.

63573



TAXATION



ACT

Grizzly Bear MINERAL CLAIM TAX SALE

To Be Returned to Title:

Grizzly, B. C.

Alberta, B.C.

(Date) 23rd February, 1953.

Full Description of Mineral Claim:

"Grizzly Bear" Lot 300,
Grangely District

Name of Absent Owner:

John D. Woodsworth.

I hereby certify that the above mineral claim was offered for sale by me at tax sale held on
23rd February, 1953, and that there was no bid made for sale.

Please furnish me with the state of title in respect to the undermentioned, QUOTING
ADDRESSES IN EVERY CASE.

[Signature]
Provincial Collector

(1) Registered Owner (if any) (address): *Unregistered*
(Harrison is unregistered in British Columbia)
I am here in good faith of the title of said
claim.
3857 Paul Hwy Road

(2) Registered Chargee (if any) (address):

(3) Application for Registration (address):

(4) Receiver Order or Authorized Assignment under the "Bankruptcy Act" (address):

(5) Assignment for Benefit of Creditor (address):

(6) Assignee (address):

MINERAL CLAIM. **61625**



COLLECTOR'S CERTIFICATE OF FORFEITURE.

(SECTION 158, CHAP. 282, "TAXATION ACT.")

18/2/43

ASSESSMENT DISTRICT. Albion	LOT NUMBER. 297. (194)
LAND DISTRICT. Clayton	NAME OF CLAIM. "Mason Road"
MINING DIVISION. Albion	NUMBER OF ACRES. 18.30
DATE OF TAX SALE. November 1st, 1943	DATE OF FORFEITURE. November 1st, 1947.
ASSESSED OWNER. Kennedy Lake Gold Mines, N.P.L.	AMOUNT DUE. Upset price at sale—Taxes - \$ 4.00 Interest 2.00 Costs - 7.00 \$ 13.00 Tax levied, redemption year 1943 TOTAL \$ 13.00

I, the undersigned, do hereby certify that on the 1st day of November A.D. 1947, I did offer for sale at public auction, after the statutory publication of notice, the above-named Mineral Claim for non-payment of taxes, interest, and costs of advertising due and payable under the "Taxation Act," and that the taxes, interest, and costs were legally due and unpaid at the date of said auction sale; and no sale of the said Mineral Claim having been effected, and the amount due being unpaid at the expiration of twelve months from the date of said auction sale, and being still unpaid, the said Mineral Claim is hereby forfeited to and vested in the Crown, for the use of the Province, free from all encumbrances.

Dated at Albion, this 15th day of November 1947.

[Signature]
Provincial Collector

Savinamon Bear
Form No. 10

MINERAL CLAIM

61626



COLLECTOR'S CERTIFICATE OF FORFEITURE.

(SECTION 158, CHAP. 282, "TAXATION ACT.")

ASSESSMENT DISTRICT. <i>Alberni</i>	LOT NUMBER. <i>24.</i>
LAND DISTRICT. <i>Clayoquot</i>	NAME OF CLAIM. <i>"Savinamon Bear"</i>
MINING DIVISION. <i>Alberni</i>	NUMBER OF ACRES. <i>50.00</i>
DATE OF TAX SALE. <i>November 1st, 1949</i>	DATE OF FORFEITURE. <i>November 1st, 1949</i>
ASSESSED OWNER. <i>Kennedy Lake Gold Mines, B.C. Ltd.</i>	AMOUNT DUE. Upset price at sale—Taxes - \$ <i>3.25</i> Interest <i>0.25</i> Costs - <i>2.00</i> \$ <i>5.50</i> Tax levied, redemption year <i>12.75</i> TOTAL \$ <i>17.25</i>

I, the undersigned, do hereby certify that on the *1st* day of *November* A.D. 19 *49*, I did offer for sale at public auction, after the statutory publication of notice, the above-named Mineral Claim for non-payment of taxes, interest, and costs of advertising due and payable under the "Taxation Act," and that the taxes, interest, and costs were legally due and unpaid at the date of said auction sale; and no sale of the said Mineral Claim having been effected, and the amount due being unpaid at the expiration of twelve months from the date of said auction sale, and being still unpaid, the said Mineral Claim is hereby forfeited to and vested in the Crown, for the use of the Province, free from all encumbrances.

Dated at *Alberni*, this *15th* day of *November* 19*49*.

H. W. Harding
H. W. Harding, Provincial Collector.

* 151 (29) 9159

MINERAL CLAIM.

Ironside
61037

Form T.C. 106

COLLECTOR'S CERTIFICATE OF FORFEITURE.

(SECTION 158, CHAP. 282, "TAXATION ACT.")

ASSESSMENT DISTRICT. <i>Alberta</i>	LOT NUMBER. <i>44</i>
LAND DISTRICT. <i>Sturgeon</i>	NAME OF CLAIM. <i>"Ironside"</i>
MINING DIVISION. <i>Alberta</i>	NUMBER OF ACRES. <i>3.16</i>
DATE OF TAX SALE. <i>November 1st, 1943</i>	DATE OF FORFEITURE. <i>November 1st, 1943</i>
ASSESSED OWNER. <i>Essex Lake Gold Mines, Ltd.</i>	AMOUNT DUE. Upset price at sale—Taxes - \$ <i>21.00</i> Interest - <i>1.00</i> Costs - <i>2.00</i> \$ <i>24.00</i> Tax levied, redemption year <i>1943</i> Total \$ <i>24.00</i>
<p>I, the undersigned, do hereby certify that on the <i>1st</i> day of <i>November</i>, A.D. 19<i>43</i>, I did offer for sale at public auction, after the statutory publication of notice, the above-named Mineral Claim for non-payment of taxes, interest, and costs of advertising due and payable under the "Taxation Act," and that the taxes, interest, and costs were legally due and unpaid at the date of said auction sale; and no sale of the said Mineral Claim having been effected, and the amount due being unpaid at the expiration of twelve months from the date of said auction sale, and being still unpaid, the said Mineral Claim is hereby forfeited to and vested in the Crown, for the use of the Province, free from all encumbrances.</p> <p>Dated at <i>Alberta</i>, this <i>25th</i> day of <i>January</i> 19<i>43</i>.</p> <p><i>H. B. Hardinge</i> H.B. Hardinge Provincial Collector.</p>	

Griseley Bear

(5530)

Form Tx. 90.



MINERAL CLAIM.

COLLECTOR'S CERTIFICATE OF FORFEITURE.

(SECTION 158, CHAP. 282, "TAXATION ACT.")

*139/200
Munich
C.C.*

ASSESSMENT DISTRICT. ALBERTA	LOT NUMBER. 300
LAND DISTRICT. CLAYOQUOT	NAME OF CLAIM. GRISLEY BEAR
MINING DIVISION. ALBERTA	NUMBER OF ACRES. 32.20
DATE OF TAX SALE. November 6th, 1950.	DATE OF FORFEITURE. November 6th, 1951.
ASSESSED OWNER. Juan D. Woodsworth.	AMOUNT DUE. Upset price at sale—Taxes - \$ 24.75 Interest 1.13 Costs - 3.75 \$ 29.63 Tax levied, redemption year 8.25 TOTAL \$ 37.88
<p>I, the undersigned, do hereby certify that on the 6th day of November A.D. 1950, I did offer for sale at public auction, after the statutory publication of notice, the above-named Mineral Claim for non-payment of taxes, interest, and costs of advertising due and payable under the "Taxation Act," and that the taxes, interest, and costs were legally due and unpaid at the date of said auction sale; and no sale of the said Mineral Claim having been effected, and the amount due being unpaid at the expiration of twelve months from the date of said auction sale, and being still unpaid, the said Mineral Claim is hereby forfeited to and vested in the Crown, for the use of the Province, free from all encumbrances.</p> <p>Dated at Alberta, this 20th day of November 1951.</p> <p><i>H. W. Harding</i> H. W. Harding, Provincial Collector.</p>	

Tran side & 2 Bears

91336

ASSIGNMENT OF CROWN GRANTED MINERAL CLAIMS

KNOW ALL MEN by these presents, that I, THOMAS O. MACKAY, of the City of Victoria, and Province of British Columbia, for and in consideration of SIX THOUSAND SHARES OF KENNEDY LAKE GOLD MINES, LTD. (H.P.L.) to be issued to me or my nominees by KENNEDY LAKE GOLD MINES, LTD. (H.P.L.) registered Office 1214 Broad Street, in the City of Victoria, Province of British Columbia, at or before the date hereof, the receipt whereof I do hereby acknowledge, have bargained, sold, assigned, transferred and set over, and by these presents do bargain, sell, assign, transfer and set over unto the said KENNEDY LAKE GOLD MINES, LIMITED (H.P.L.) their heirs and assigns all my Estate, right, title, interest, claim and demand whatsoever both at law and in equity, of, in and to the certain parcel or tract of land and premises situated in Kennedy River area, Clayoquot Mining Division, Vancouver Island, Province of British Columbia, containing by admeasurement 133e23 acres, more or less and being composed of Lot 294, Clannan Bear Mineral Claim, Lot 293 Black Bear Mineral Claim and Lot 407 Ironside Mineral Claim, in the Clayoquot Mining Division aforesaid.

TO HAVE AND TO HOLD the same with all and every the benefit that may or can be derived unto the said Kennedy Lake Gold Mines, Ltd. (H.P.L.) their heirs and assigns forever.

IN WITNESS WHEREOF, I hereby set my hand and seal this 10th day of November, 1938, at the City of Victoria, Province of British Columbia.

James Butcher
 Witness *James Mackay*

 Commissioner, Notary Public, etc. Title and Address of such Official

KNOW ALL MEN by these presents, that I, THOMAS O. MACKAY, of
the City of Victoria, and Province of British Columbia, for and in
consideration of SIX THOUSAND SHARES OF KENNEDY LAKE GOLD MINES, LTD. (N.P.L.)
to be issued to me or my nominees by KENNEDY LAKE GOLD MINES, LTD. (N.P.L.)
registered Office 1214 Broad Street, in the City of Victoria, Province of
British Columbia, at or before the date hereof, the receipt whereof I do
heroby acknowledge, have bargained, sold, assigned, transferred and set
over, and by these presents do bargain, sell, assign, transfer and set over
unto the said KENNEDY LAKE GOLD MINES, LIMITED (N.P.L.) their heirs and
assigns all my Estate, right, title, interest, claim and demand whatsoever
both at law and in equity, of, in and to the certain parcel or tract of
land and premises situated in Kennedy River area, Clayoquot Mining Division,
Vancouver Island, Province of British Columbia, containing by admeasurement
133.23 acres, more or less and being composed of Lot 294, Cinnamon Bear
Mineral Claim, Lot 293 Black Bear Mineral Claim and Lot 487 Ironside Mineral
Claim, in the Clayoquot Mining Division aforesaid.

TO HAVE AND TO HOLD the same with all and every the benefit that may
or can be derived unto the said Kennedy Lake Gold Mines, Ltd. (N.P.L.) their
heirs and assigns forever.

IN WITNESS WHEREOF, I heroby set my hand and seal this 10th day
of November, 1938, at the City of Victoria, Province of British Columbia.

Witness

A Commissioner, Notary Public, etc.

Title and Address of such Officer

MINERAL DEPOSIT INVENTORY

Property No. 536 Metal Industrial Mineral Placer Coal Lapidary Number of cards Name: Current Bear Group Previous _____C.G. lot name Cinnamou Bear No. 294

Owner _____ Operator _____

Location: Map No. 92F-47 N.T.S. Sheet 92F/2W L.L.Q. 49°125'SE Claim _____ El. 500'M.D. Alceni In park _____ E. & N. Phys. subd. K.T. AltesIsolated deposit Mineralized region Mining camp _____ Locality Kearney R.Discovery: Date 1902 Method _____Status: Producer Active Intermittent Inactive Exhausted L+ L M S S- Non-producer Pot. prod. Under exploration Prospect Occurrence Reserves: L+ L M S S- Tons _____ Grade _____Est. potential: L+ L M S S- Grade _____Development: Surface _____ Surveys: Geophys. Geochem. Geol. Underground 1 adit - 246'

Diamond drilling _____ Other drilling _____

Reports on Property: M.M. A.R. 1922-232; 1913-277

Dept. expl. forms _____

Assessment reports: Geological _____ Geophysical _____ Geochemical _____

Geological and maps _____

Reports on Region: Geological _____

Geophysical _____

Geochemical _____

Recorded by Sp. K. K. Date Feb '68 Revised by _____ Date _____

Summary description _____

Category of deposit veinWallrock(s) Diorite F.W. Formational name _____"Porphyry" H.W.Attitude of deposit: Strike 267° Dip 45-50°N Azimuth _____ Plunge _____Size: Length _____ Width 3-4' Depth _____

Character of mineralization _____

Main elements AuMineralogy quartz, feldspar, calcite, pyrite, arsenopyriteAssays Average: Au 0.10 oz/T.

Production: Tons _____ Grade _____

Remarks _____

Product(s) AuProperty No. 536

MINERAL DEPOSIT INVENTORY

535

Property No. 535 Metal Industrial Mineral Placer Coal Lapidary Number of cards

Name: Current Ironside + Grizzly Bear Previous Cinnamon Bear
 C.G. lot name Ironside No. 457
 Owner G.D. Dunn Operator Black Bear

Location: Map No. 92F-45 N.T.S. Sheet 92F/3W L.L.Q. 49°125'35" Claim El. 1200
 M.D. Alberni In park E. & N. Phys. subd. K.L. Atlas
 Isolated deposit Mineralized region Mining camp Locality Kennedy St.

Discovery: Date 1903? Method _____

Status: Producer Active Intermittent Inactive Exhausted L+ L M S S-
 Non-producer Pot. prod. Under exploration Prospect Occurrence
 Reserves: L+ L M S S- Tons _____ Grade _____
 Est. potential: L+ L M S S- Grade _____

Development: Surface Surveys: Geophys. Geochem. Geol.
 Underground _____
 Diamond drilling _____ Other drilling _____

Reports on Property: M.M. A.R. 1903-192
 Dept. expl. forms _____
 Assessment reports: Geological _____ Geophysical _____ Geochemical _____
 Geological and maps _____

Reports on Region: Geological _____
 Geophysical _____
 Geochemical _____

Recorded by J.P.C. Date Feb '62 Revised by _____ Date _____

Summary description _____

Category of deposit _____
 Wallrock(s) _____ Formational name _____

Attitude of deposit: Strike _____ Dip _____ Azimuth _____ Plunge _____

Size: Length _____ Width _____ Depth _____

Character of mineralization _____

Main elements _____

Mineralogy _____

Assays _____

Production: Tons _____ Grade _____

Remarks _____

Product(s) ?

Property No. 535

92F-45



Form A

DEPARTMENT OF MINES AND PETROLEUM RESOURCES

MINERAL ACT

RECORD OF MINERAL CLAIM

Map No. 92F3W Record No. 20450

Mining Receipt No. 89054E

Recorded at Port Alberni, B.C., this 19 day of February 1974

DO NOT WRITE IN THIS SHADED AREA FOR OFFICE USE ONLY

Mining Recorder

APPLICATION FOR REVERTED CROWN-GRANTED MINERAL CLAIM

(Sec. 57, Mineral Act)

Mining Division Alberni BC

I, D.E. Kinneard (Name)

agent for Self (Name)

7-94 Commercial St (Address)

(Address)

Nanaimo BC

F.M.C. No. 113604 issued May 11/73 F.M.C. No. issued

make application for a record of a mineral claim of the following reverted Crown-granted mineral claim(s).

If more than one claim appears in this application, the applicant(s) hereby certifies (certify) that the claims all adjoin and do not collectively exceed 40 acres.

Table with 5 columns: Name of Claim, Lot No., Mining Division, Land District, Acreage. Row 1: Port Dean, 293, Alberni, Clayquot, 42.1. Total 42.1

The prescribed fee, in the amount of \$ 5.00, is submitted herewith.

Signature of D.E. Kinneard

OFFICE USE ONLY box containing Time A.M./P.M. and MR STAMP

OWNER



Form A

DEPARTMENT OF MINES AND PETROLEUM RESOURCES

MINERAL ACT

RECORD OF MINERAL CLAIM

Map No. 9 2F3W Record No. 20451
Mining Receipt No. 89054E
Recorded at Port Alberni, B.C., this 19 day of February 19 74

DO NOT WRITE IN THIS SHADED AREA FOR OFFICE USE ONLY

Mining Recorder

APPLICATION FOR REVERTED CROWN-GRANTED MINERAL CLAIM

(Sec. 57, Mineral Act)

Mining Division Alberni

I, G.E. Kennedy agent for Self
(Name) (Name)
294 Commercial St (Address)
Nanaimo B.C. (Address)

F.M.C. No. 115600 issued May 1955 F.M.C. No. issued

make application for a record of a mineral claim of the following reverted Crown-granted mineral claim(s).

If more than one claim appears in this application, the applicant(s) hereby certifies (certify) that the claims all adjoin and do not collectively exceed 40 acres.

Table with 5 columns: Name of Claim, Lot No., Mining Division, Land District, Acreage. Row 1: Kennedy Bore, 294, Alberni, Clayquit, 80.6. Total: 80.6

The prescribed fee, in the amount of \$ 5.00, is submitted herewith.

Signature of G.E. Kennedy

OFFICE USE ONLY box containing Time A.M./P.M. and MR. STAMP

OWNER



DEPARTMENT OF MINES AND PETROLEUM RESOURCES

MINERAL ACT

RECORD OF MINERAL CLAIM

Map No. 92F3W Record No. 20452
Mining Receipt No. 89054E
Recorded at Port Alberni, B.C., this 19 day of February 1974

DO NOT WRITE IN THIS SHADED AREA FOR OFFICE USE ONLY

Mining Recorder

APPLICATION FOR REVERTED CROWN-GRANTED MINERAL CLAIM

(Sec. 57, Mineral Act)

Mining Division Alberni

G. E. Kinnear agent for S. L.
7-9-1 Commercial St
Nanaimo BC

F.M.C. No. 115644 issued March 9/73 F.M.C. No. - issued

make application for a record of a mineral claim of the following reverted Crown-granted mineral claim(s).

If more than one claim appears in this application, the applicant(s) hereby certifies (certify) that the claims all adjoin and do not collectively exceed 40 acres.

Table with 5 columns: Name of Claim, Lot No., Mining Division, Land District, Acreage. Row 1: Ironside, 487, Alberni, Clayquot, 35.16. Total: 35.16

The prescribed fee, in the amount of \$ 5.00, is submitted herewith.

G. E. Kinnear Signature

OFFICE USE ONLY box containing Time A.M./P.M. fields and MR STAMP area.

OWNER

Form A



DEPARTMENT OF MINES AND PETROLEUM RESOURCES

MINERAL ACT

RECORD OF MINERAL CLAIM

Map No. 92F3W

Record No. 20453

Mining Receipt No. 89054E

Recorded at Port Alberni, B.C., this 19 day of February 1974

DO NOT WRITE IN THIS SHADED AREA FOR OFFICE USE ONLY

Mining Recorder

APPLICATION FOR REVERTED CROWN-GRANTED MINERAL CLAIM

(Sec. 57, Mineral Act)

Mining Division All

I, G. E. Kinnear

agent for Self

7-90 Commercial St

Nanaimo B.C.

F.M.C. No. 115600 issued May 2/74

F.M.C. No. issued

make application for a record of a mineral claim of the following reverted Crown-granted mineral claim(s).

If more than one claim appears in this application, the applicant(s) hereby certifies (certify) that the claims all adjoin and do not collectively exceed 40 acres.

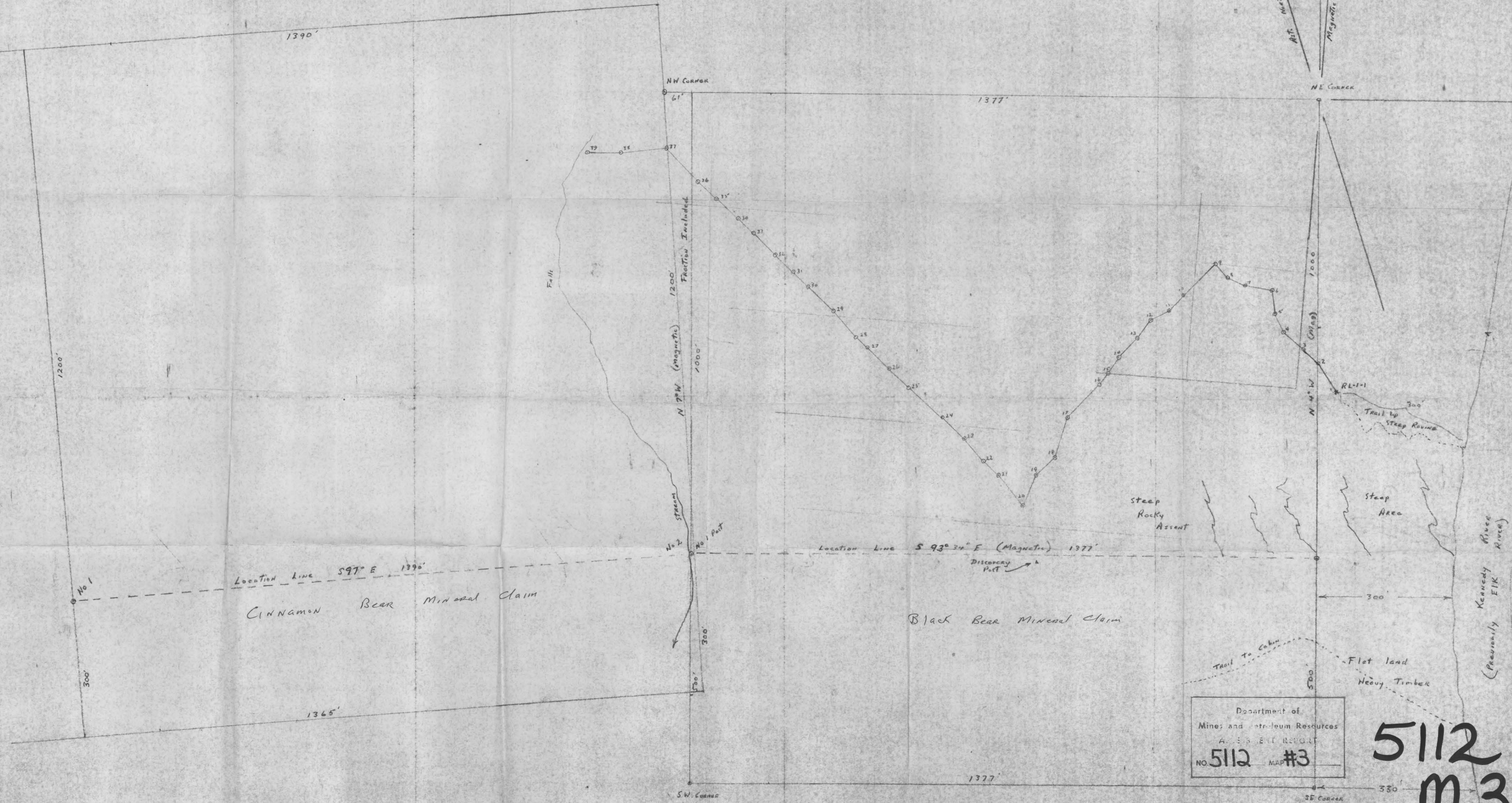
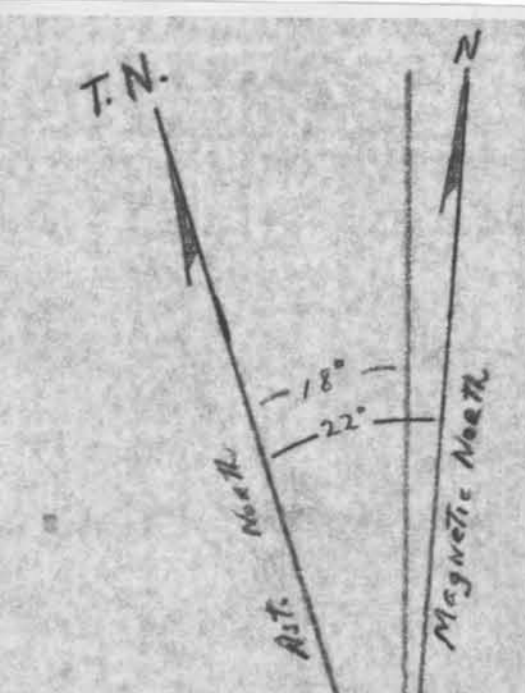
Table with 5 columns: Name of Claim, Lot No., Mining Division, Land District, Acreage. Row 1: Kinnear's Claim, 300, Alberni, Clayquot, 32.2. Total: 32.2

The prescribed fee, in the amount of \$ 5.00, is submitted herewith.

Signature of G. E. Kinnear

OFFICE USE ONLY box containing Time A.M./P.M. fields and MR STAMP area.

OWNER



Department of
Mines and Petroleum Resources
A-535-811 REPORT
NO. 5112 MAP #3

5112
M3

Scale 1" = 100'
Black Bear Mineral Claim - 293
Cinnamon Bear Mineral Claim - 294
Drawn by G. Kinnear Aug 6-1974