



DEPARTMENT OF MINES AND PETROLEUM RESOURCES

FORM B (Section 51) MINERAL ACT

Affidavit on Application to Record Work

1. I, ALFRED J. GARRAWAY Agent for ZULU EXPLORATIONS LTD (NPL)
725 SUFFOLK STREET EIGHTH FLOOR BENTALL BUILDING
VICTORIA, B.C. 1070 DOUGLAS STREET, VICTORIA, B.C.
Free Miner's Certificate No. 130152 Free Miner's Certificate No. 130151
Date issued JANUARY 17, 1974 Date issued JANUARY 17, 1974.

MAKE OATH AND SAY:

2. I have done, or caused to be done, work on the LAD FIVE GROUP 40 CLAIMS
LAD 89-110 & LAD 137-154 Mineral Claim(s)
Record No.(s) 67522-67543 & 67570-67587
Situate at BOWRON RIVER AREA in the CARIBOO Mining Division,
to the value of at least 8,000 dollars. Work was done from the 21 day
of AUGUST 1973, to the 21 day of AUGUST 1974
3. The following is a detailed statement of such work done in the 12 months in which such work is required to be done.

(COMPLETE APPROPRIATE SECTION(S) A, B, C, D, BELOW)

A. PHYSICAL (Trenches, open cuts, adits, pits, shafts, reclamation, and construction of roads and trails)

(Give details as required by regulations)

COST

TOTAL

I wish to apply \$ of this work to the claims listed below.
(State number of years to be applied to each claim and its month of record)

Department of
Mines and Petroleum Resources
ASSESSMENT REPORT
NO. 5113 MAP

ZULU EXPLORATIONS LTD (NPL)

DRILLING Z10 DRILL HOLE

The drill used was a Longyear No. 38

Wire Line Drill Size BQ with 1 7/16" core

LOCATION

Bowron River Area, 50 miles SE of Prince George
Cariboo Minig Division

On LAD 90 Mineral Claim

LOT 4845 or Coal Licence 454
on west side of Bowron River
120 feet from river bank

Azimuth.....1° quadrilateral 53° 121' NW
Reference Map.....93 H/13 W
Elevation.....2450
Inclination of Drill Hole.....90° from horizontal

Depth of Drill Hole.....818 feet

Depth of Overburden.....120 feet

BW casing to.....130 feet

The drill core is stored at the camp at the Garraway Mine, and will be
logged by Dr. John Hughes, Consulting Geologist.

MAPS

- #1 Claims map 1" = 1,500'
- #2 " " 1" = 1,000'
- #3 Topographical map

A. J. Garraway
Project Manager

Department of
Mines and Petroleum Resources
ASSESSMENT REPORT
5113 MAP

ZULU EXPLORATIONS LTD (NPL)

LAD FIVE GROUP

Z10 DRILL HOLE

July 5th, 1974.....August 16th, 1974.....6 weeks

3 Men.....6 weeks each

A. Kary, John Grzyb and A. J. Garraway

SALARIES

Salary each per month.....\$1,500.00 Gross

3 Men at \$1,500.00 per month.....\$4,500.00

Allowance for cooking.....\$ 500.00

Total per month.....\$5,000.00

3 Men at \$1,250.00 per week6 weeks.....\$7,500.00

MAINTENANCE OF CAMP

Food and Supplies.....\$ 720.00

Propane and Diesel Fuel.....\$ 132.00

Total.....\$ 852.00

TRANSPORTATION

International 4 x 4 Truck

Camp to Drill and Return

10 miles.....\$ 20.00

Total.....\$ 20.00

DIAMOND DRILL

4 BQ Bits

2 Tricone Bits

1B. W. Casing Shoe

1 Reaming Shell

Set of B. W. Chuck Jaws

6 Cups for Pump.....\$1,609.47

Drilling Mud.....\$ 542.71

Fuel.....Diesel and Gas.....\$ 250.00

Total.....\$2,402.18

\$10,774.18

Department of
Mines and Petroleum Resources
ASSESSMENT REPORT
NO. 5113
MAP

ZULU EXPLORATIONS LTD (NPL)

DRILL LOGS FOR Z10 DRILL HOLE

0 - 120.....Overburden, Casing to 130 feet
120 - 130.....Soft Grey Shales
130 - 160.....Grey Shales and Mud Seaks
160 - 180.....Grey Shales, Harder Sandstone Bands
180 - 210.....Hard Grey Shales, Sandstone Bands
210 - 250.....Grey and Dark Shales
250 - 300.....Hard Grey and Dark Shales
300 - 360.....Hard Dark Shales - 1' Coat at 350 feet
360 - 410.....Dark Shales with Grey Shale Bands
410 - 475.....Dark Shales - 6" Coal at 452'
475 - 525.....Dark and Grey Shales
525 - 582.....Grey Shales - 2' Conglomerate at 580'
582 - 585.....Conglomerate
585 - 625.....Grey Shales
625 - 690.....Grey and Dark Shales - Coal Stringers
690 - 740.....Dark Shales - Coal Stringers
740 - 790.....Dark Shales - 6" Coal at 765 feet
790 - 818.....Dark Shales

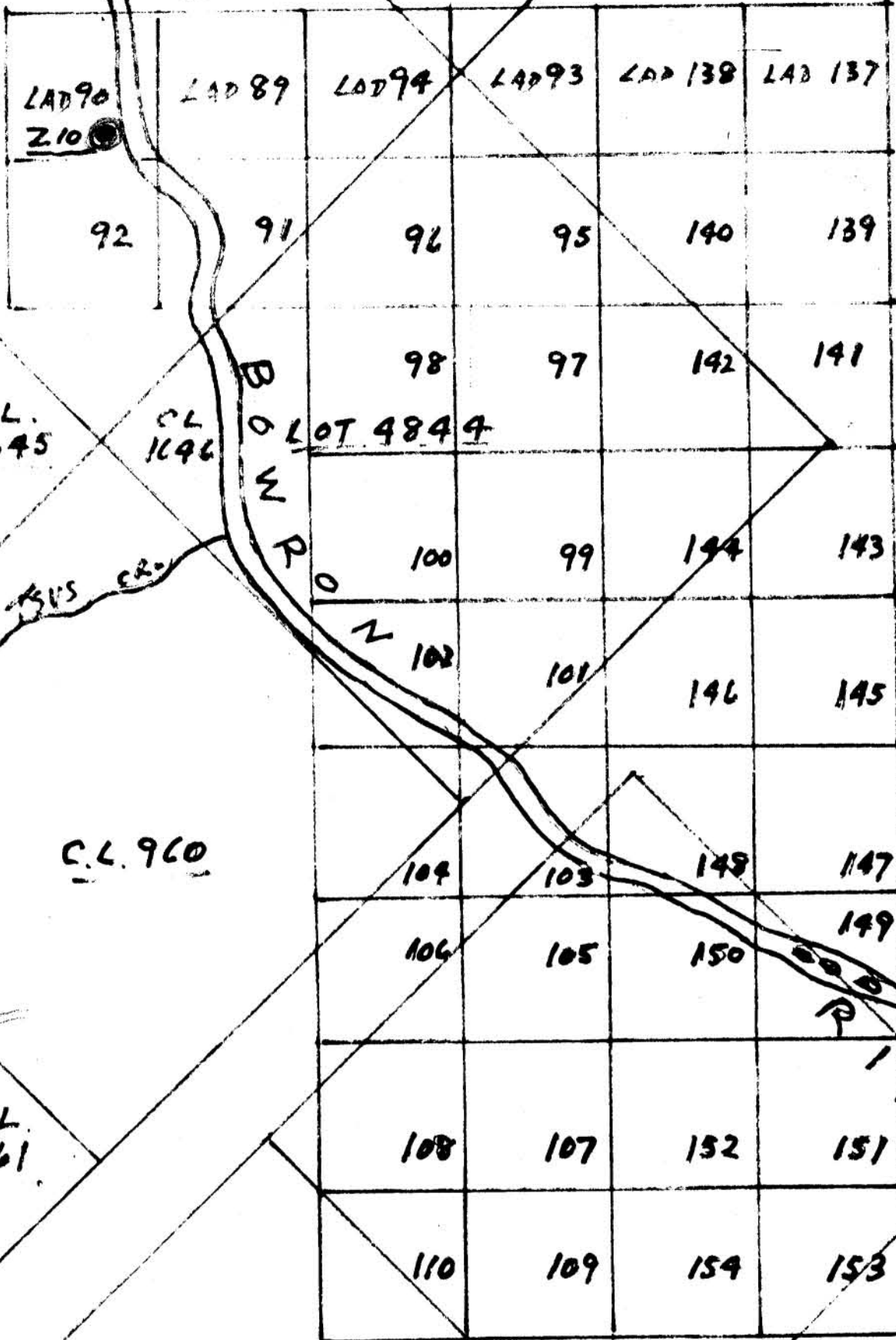
A. Garraway

Project Manager

5113

LOT 4845
CL 454

LOT 4846
CL 453



C.L. 1640

C.L. 1641

C.L. 1643

LAD FIVE GROUP



SCALE
1" = 1500'

Department of
Mines and Petroleum Resources
ASSESSMENT REPORT
NO. 5113 MAP #1

C.L. 1642

C.L.
959

Handwritten signature

LOT 4845
C.L. 454

LOT 4846
C.L. 453

LAD 90

LAD 89

LAD 94

LAD 93

LAD 138

Z10
DRILL
HOLE

92

91

96

95

140

98

97

142

C.L.
1645

B
O
N
P
O
N

C.L.
1646

LOT 4844

100

99

144

TSUS CREEK

102

101

146

C.L. 960

104

103

148

R
I
V
E
R

TRV
SCALE
1" = 1000'

C.L. 1641

LAD FIVE GROUP

C.L.
1690

Department of
Mines and Petroleum Resources

ASSESSMENT REPORT

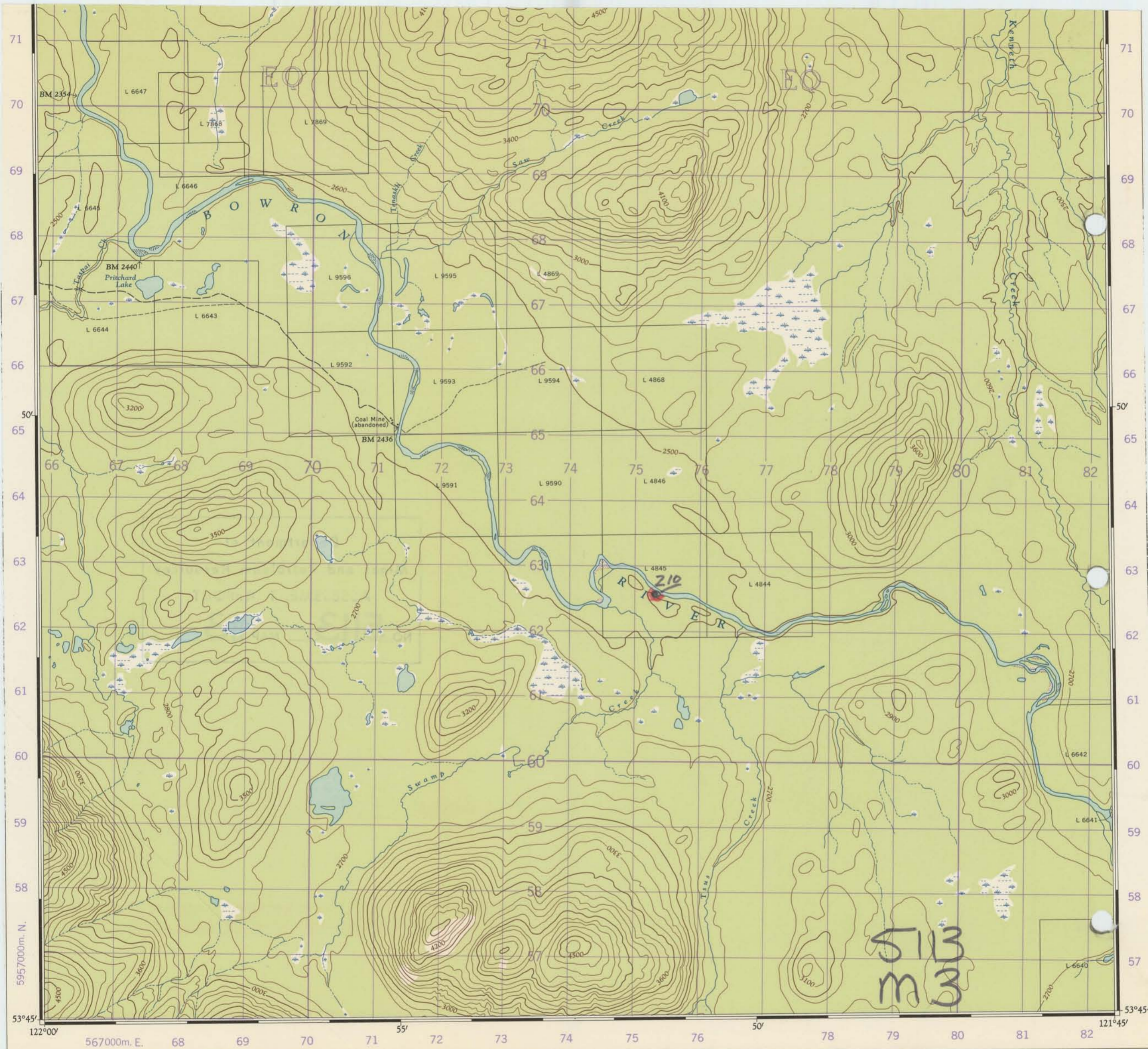
5113

#2

NO

MAP

Handwritten signature



Produced and printed by the SURVEYS AND MAPPING
 RANCH, DEPARTMENT OF MINES AND TECHNICAL
 SURVEYS, 1961, from air photographs taken in 1953 and
 1955.

HUTTON
 CARIBOO DISTRICT
 BRITISH COLUMBIA

Établie et imprimée par la DIRECTION DES LEVÉS ET
 LA CARTOGRAPHIE, MINISTÈRE DES MINES ET
 RELEVÉS TECHNIQUES en 1961, d'après les photographies
 aériennes prises en 1953 et 1955.