

RECEIVED

SEP 6 1974

GOVERNMENT AGENT  
SMITHERS, B. C.

---

JOHN R. POLONI P. Eng.  
Consulting Geologist

# 5136

93K/7E

REPORT

ON

DIAMOND DRILLING

STUART LAKE PROPERTY

WESTWIND MINES LTD.

by

John R. Poloni, B. Sc., P. Eng.

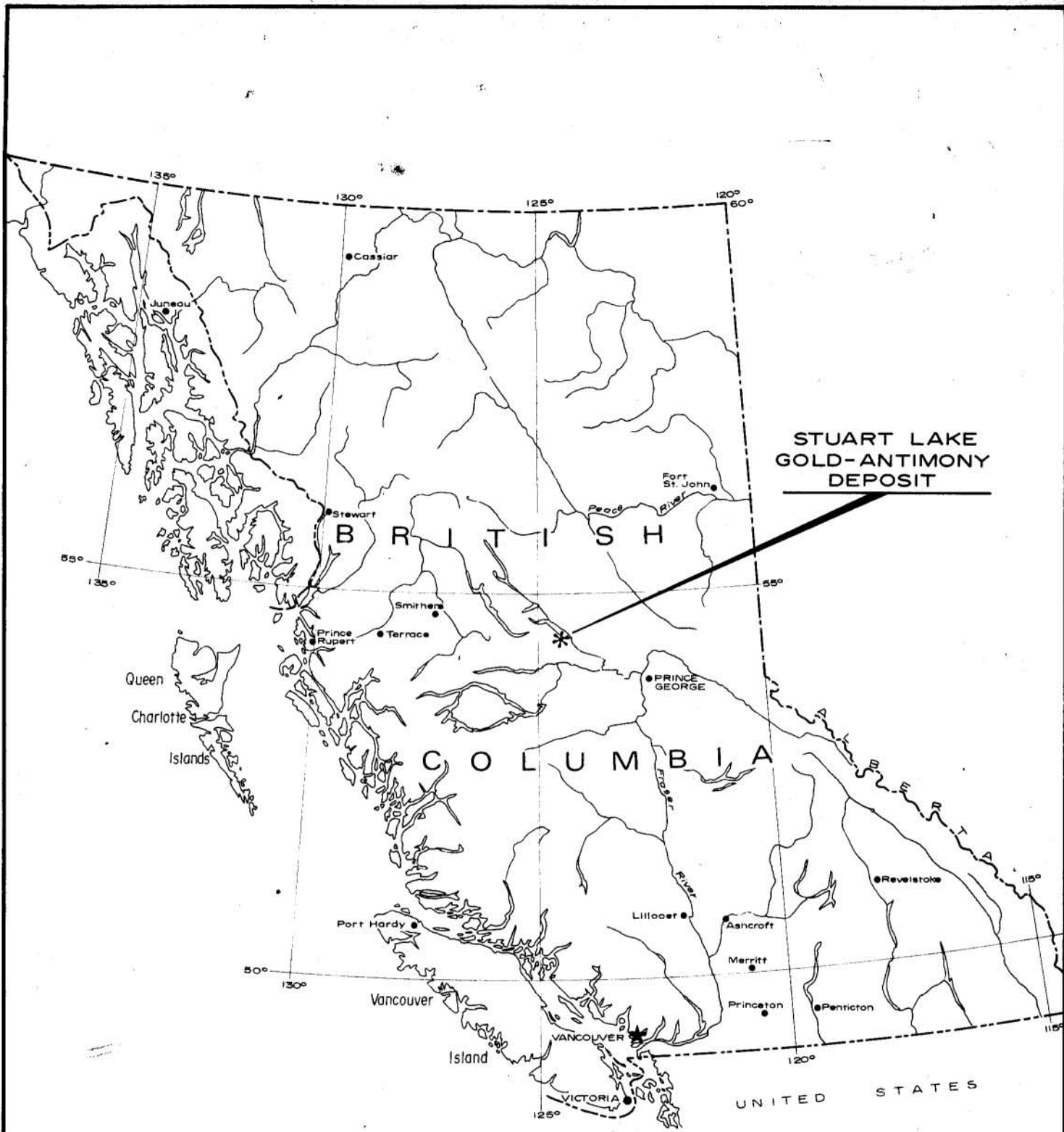
August 15, 1974.

Department of  
Mines and Petroleum Resources  
ASSESSMENT REPORT

NO. **5136** MAP.....

---

JOHN R. POLONI P. Eng.  
Consulting Geologist



**STUART LAKE  
GOLD-ANTIMONY  
DEPOSIT**

FIG. 1

Department of  
Mines and Petroleum Resources  
**ASSESSMENT REPORT**  
NO. **5136** MAP **#1**

**WESTWIND MINES LTD. (N.P.L.)**

**STUART LAKE  
GOLD-ANTIMONY DEPOSIT  
OMINECA M.D.**

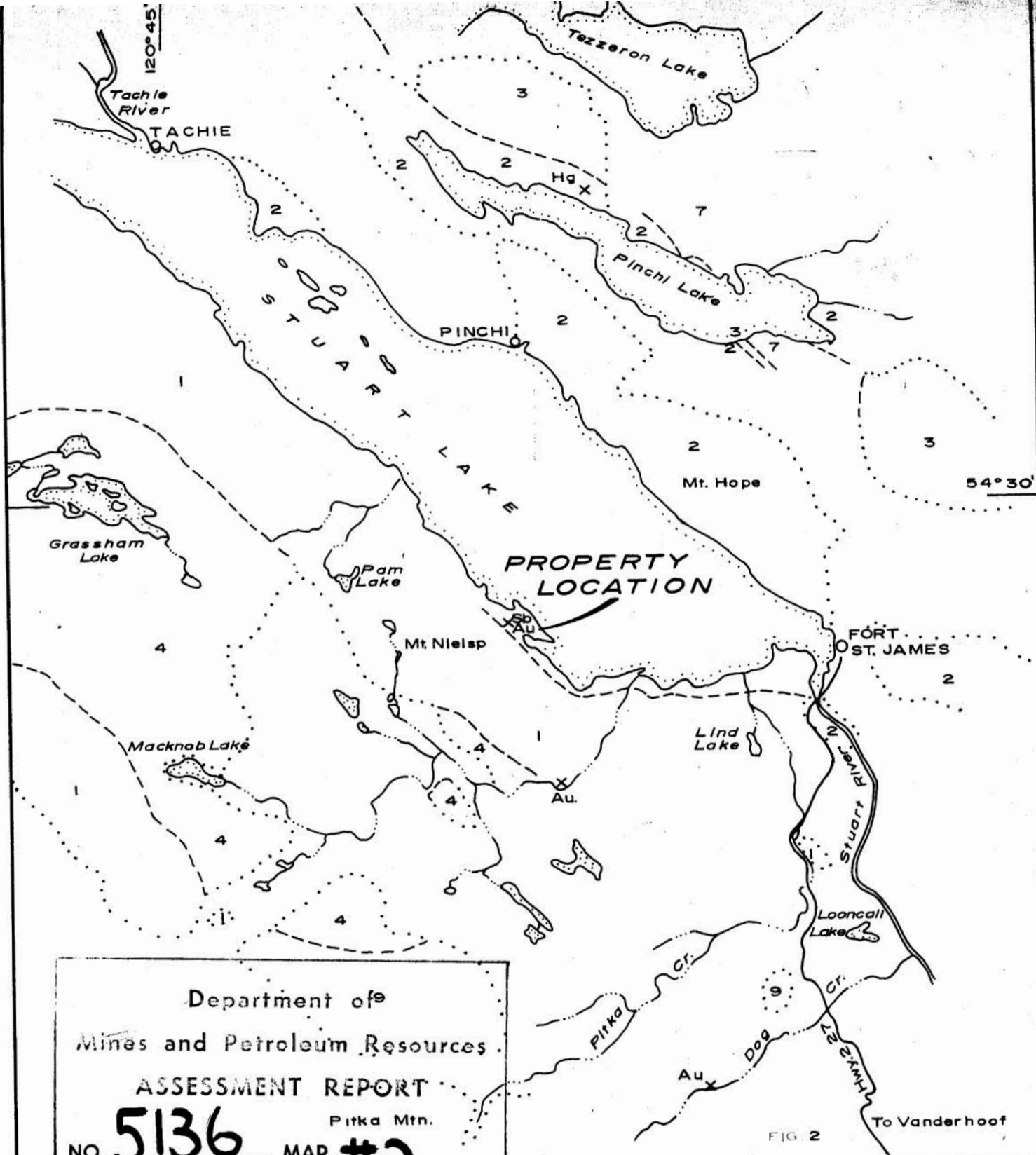
**PROPERTY LOCATION**

JOHN R. POLONI B.Sc., P. Eng.

SCALE: 1" = 136 Miles      AUGUST 15, 1974

TABLE OF CONTENTS

	<u>PAGE NO.</u>
1. SUMMARY.....	1
2. INTRODUCTION.....	2
3. LOCATION MAP - FIG. 2.....	3
4. PROPERTY.....	4
5. PHYSICAL FEATURES.....	4
6. HISTORY.....	5
7. GEOLOGY.....	5
8. ECONOMIC GEOLOGY.....	6
9. DIAMOND DRILLING.....	6
10. APPENDICES.....	8 - 13
Appendix A - Cost of Work Program..	8
Appendix B - Certificate.....	10
Appendix C - Diamond Drill Logs	
#1 Location Map	
Drill Sections.....	13
#2 General Geology	
#3 Claim map	
#4 Drill Hole Locations	
#5-#8 D.D.H. Sections	
#9 Longitudinal Section	



Department of  
 Mines and Petroleum Resources  
 ASSESSMENT REPORT  
 Pitka Mtn.  
 NO. **5136** MAP #**2**  
 LEGEND

- 1 ARGILLITE, CHERT, SLATE ANDESITE TUFF, CHERT CONGLOMERATE.
- 2 MASSIVE LIMESTONE ARGILLITE
- 3 SERPENTIZED PERIDOTITE
- 4 HORNBLEND DIORITE.
- 7 ANDESITE, RHYOLITE
- 9 ANDESITE, BASALT, DACITE

Ref. map : Dept. of Mines and Resources  
 Map 630 A

WESTWIND MINES LTD. (NPL.)

STUART LAKE  
 GOLD-ANTIMONY DEPOSIT  
 OMINICA M.D.

**GENERAL GEOLOGY**

JOHN R. POLONI B. Sc., P. Eng.

SCALE: 1" = 4 miles

AUGUST 15, 1974

FIG 2

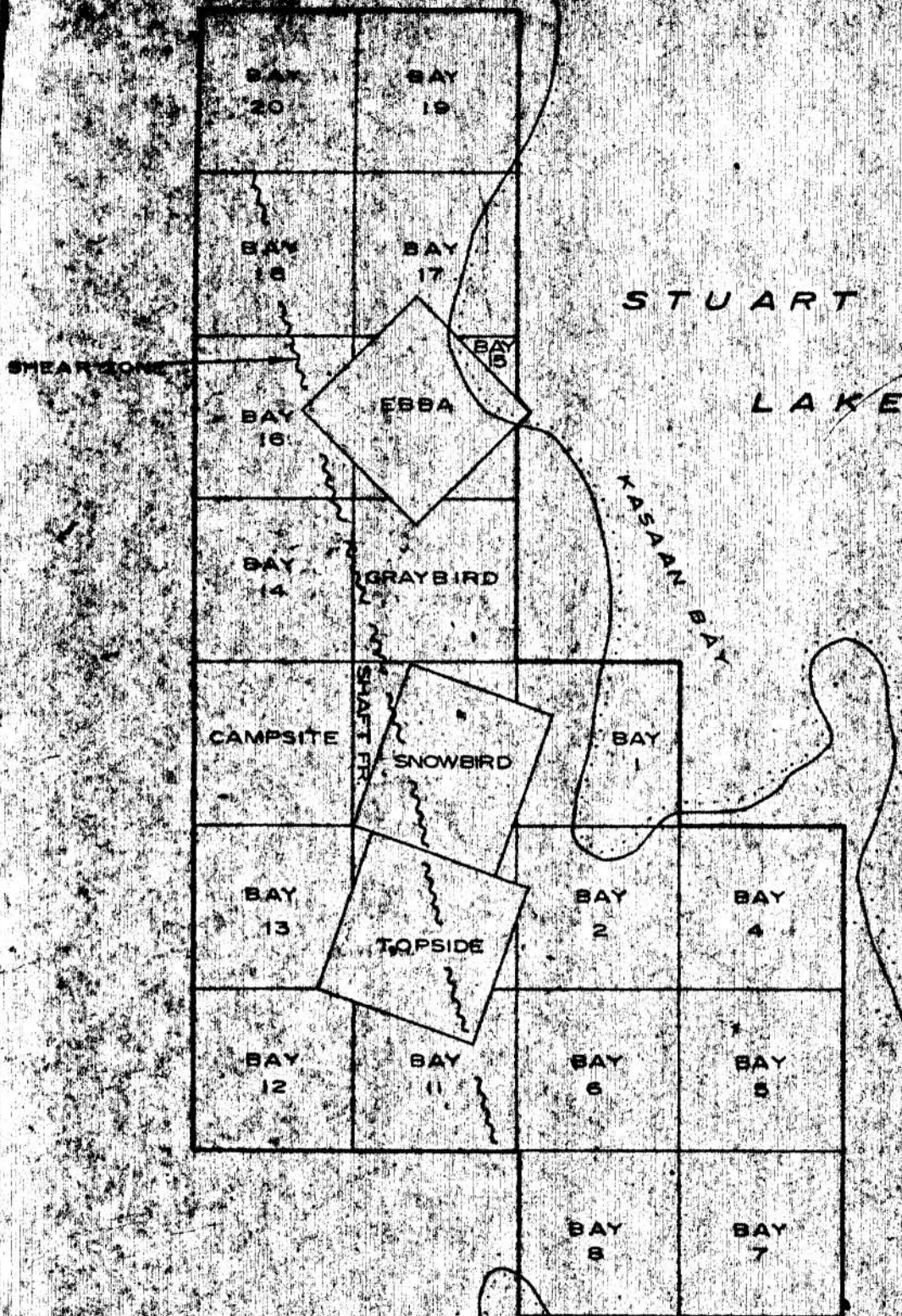
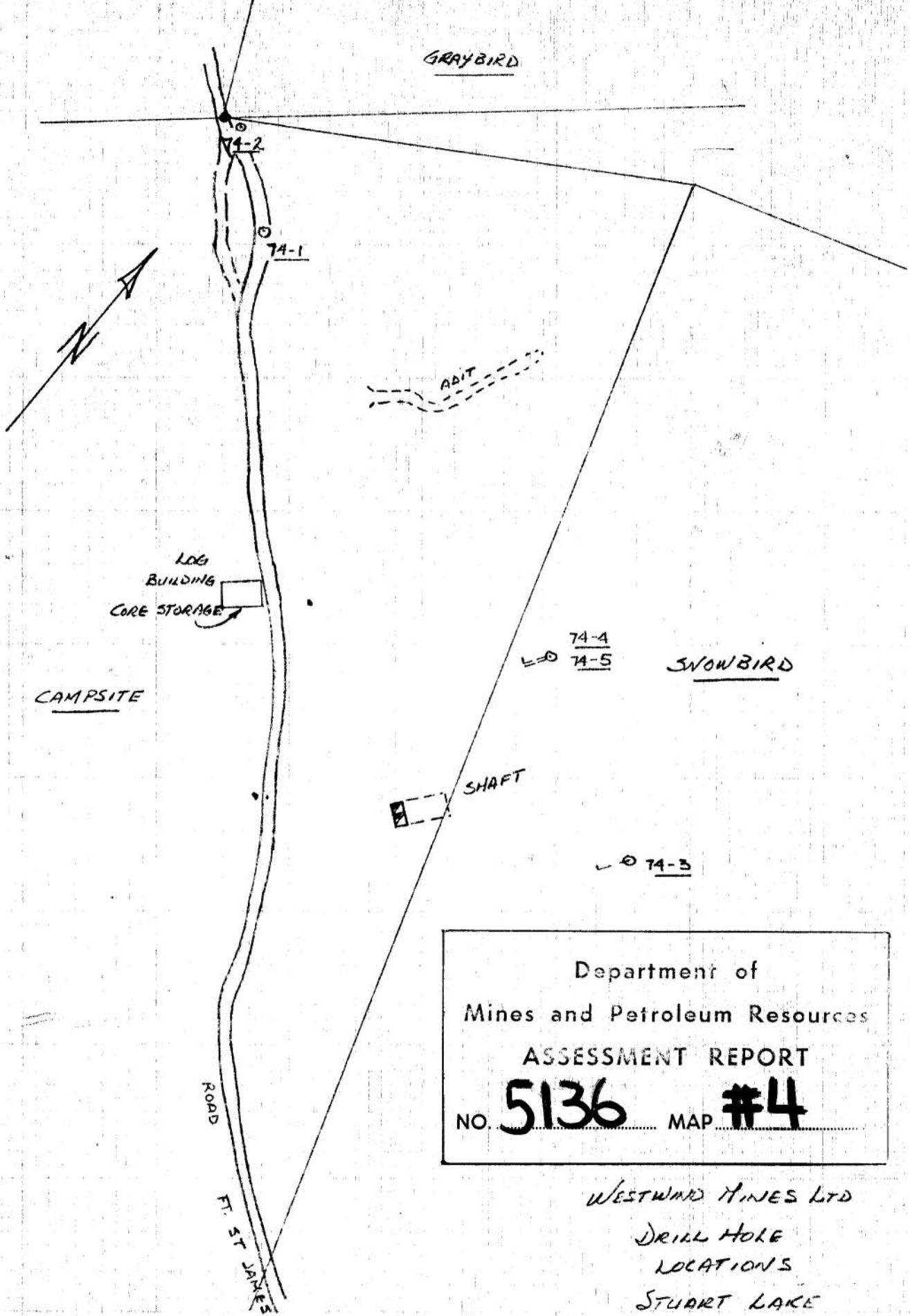


FIG. 3

Department of  
 Mines and Petroleum Resources  
 ASSESSMENT REPORT  
 NO. **5136** MAP **#3**

WESTWIND MINES LTD. (NPL)	
STUART LAKE GOLD-ANTIMONY DEPOSIT OMINECA M.D.	
CLAIM MAP	
JOHN R. POLONI, B.Sc., P. Eng.	
SCALE: 1" = 1500'	OCTOBER 26, 1973



Department of  
 Mines and Petroleum Resources  
 ASSESSMENT REPORT  
 NO. **5136** MAP **#4**

WESTWARD MINES LTD  
 DRILL HOLE  
 LOCATIONS  
 STUART LAKE  
 SCALE 1" = 100'  
 J.R. POLONI P. ENG.

SUMMARY

During July 1974 five B-Q wire line drill holes were completed to examine the Main Vein. These holes intersected the vein as expected. A total of 910.0' was undertaken.

Assessment was applied to extend the expiry dates for one year. Drill hole locations, and sections are included in this report accompanied by the diamond drill hole logs.



INTRODUCTION

The diamond drill program undertaken on the Stuart Lake Gold - Antimony property during July 1974 consisted of 910 feet of B-Q wire line drilling done under contract by Ray Jones Drilling Ltd. Five holes were undertaken to test a previously explored quartz-carbonate zone for gold and antimony.

This work was undertaken by Westwind Mines Ltd. during the period July 3 - 27, 1974, and is summarized in this report.

LOCATION MAP

Fig. 2

PROPERTY

The property consists of twenty-seven claims as listed below. Assessment work has been filed on all of the claims on August 7, 1974.

<u>Name</u>	<u>Record No.</u>	<u>Expiry Date</u>
Campsite	1896	Nov. 5, 1975
Ebba	1897	Nov. 5, 1975
Graybird	1898	Nov. 5, 1975
Topside	1899	Nov. 5, 1975
Snowbird	1900	Nov. 5, 1975
Shaft Fractional	8723	Oct. 20, 1976
Bay 1, 2	64566-67	Aug. 13, 1975
Bay (4-8)	79034-38	Aug. 8, 1976
Bay (11-20)	79039-48	Aug. 8, 1975
Bay 21, 22	103195-6	Sept. 3, 1975
Bay 23, 23 Fr.	105821-22	Oct. 20, 1975

PHYSICAL FEATURES

The claims are located at Latitude 54° 27' N. and Longitude 124° 30' W., approximately 12 miles westerly from Fort St. James at Kassin Bay on Stuart Lake. A gravel road provides access from Fort St. James to the property, a distance of 14 miles.

Moderate relief with elevations ranging between 2,400 feet and 2,600' above sea level are typical.

The buildings remaining on the property were constructed during the 1940's and all require rehabilitation if they are to be used.

#### HISTORY

The claims were initially staked in 1928 as the McMullen group, and were optioned by Westwind Mines in October 1973. A detailed history is presented in the authors report of October 1973, and the reader is referred to this.

#### GEOLOGY

The claims are underlain by steeply dipping interbedded argillites, slates quartzites, greenstones and serpentine of the Cache Creek group having a general northwesterly trend. Sections of volcanic breccia were observed in the drill core. Diorite dikes are found cutting the sediments.

A zone of ankerite carbonate, quartz, serpentine, and mariposite cut by a network of quartz veins and stringers at times containing pyrite, antimony, and gold is found crossing the central part of the property.

This is a shear zone having a northwesterly trend and being 150 to 200 feet wide with a northeast dip of 40 to 50 degrees. This zone has been observed to be strongly brecciated.

#### ECONOMIC GEOLOGY

The mineralization found to date consists of antimony, gold and pyrite occurring with mariposite in a carbonitized serpentine zone, having a northwesterly strike and being generally concordant with the bedding of the sediments.

The diamond drilling undertaken in 1974 examined only a small section of the Main Vein. One drill hole 74-3 was extended to intersect the Peg Leg Vein.

The Argillite Vein carried a narrow body of almost solid stibnite 30 feet long and 4.1 inches wide. This body was mined out by Consolidated Mining and Smelting. No drilling or exploration was done on this Vein in 1974.

#### DIAMOND DRILLING

During the program a total of 910.0 feet of B-Q wire line drilling was undertaken in five holes. Diamond Drill data is as follows:

<u>Hole No.</u>	<u>Location</u>	<u>Dip</u>	<u>Depth</u>	<u>Strike</u>
74-1	450' N.W. E of shaft	-90 <sup>o</sup>	121.0'	-
74-2	530' N.W. E of shaft	-90 <sup>o</sup>	141.0'	-
74-3	75' S.E. of E of shaft	-75 <sup>o</sup>	278.0'	S34 <sup>o</sup> W.
74-4	75' N.W. of E of shaft	-55 <sup>o</sup>	185.0'	S34 <sup>o</sup> W.
74-5	75' N.W. of E of shaft	-70 <sup>o</sup>	185.0'	S34 <sup>o</sup> W.

Copies of the diamond drill logs, a location plan, and sections of the holes are included in the report.

APPENDIX A

Cost of the Work Program

PROGRAM COST

Period

July 3 - 27, 1974

Work Undertaken

B-Q wire line Drilling under Contract

910.0'

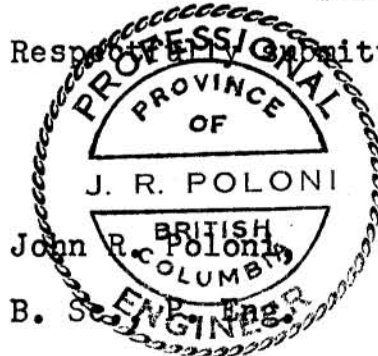
Engineering Costs

Road Work

Total Cost

\$10,000.00

Respectfully Submitted,



John R. Poloni  
B. S. Eng. Eng. R.



APPENDIX B

**Certificate**

CERTIFICATE

I, John R. Poloni, of 5502 - 8B Avenue, in Delta, in  
the Province of British Columbia

DO HEREBY CERTIFY THAT:

1. I am a Consulting Geologist.
2. I am a graduate of McGill University of Montreal, Quebec, where I obtained a B. Sc. degree in Geology in 1964.
3. I am a registered Professional Engineer in the Geological Section of the Association of Professional Engineers of the Province of British Columbia.
4. I have practiced my profession since 1964.
5. I am a Fellow of the Geological Association of Canada and a member of the Canadian Institute of Mining and Metallurgy.
6. I am a member of the Association of Geologists of Quebec.
7. I have supervised the work programs reported on here in during the period July 3 - 27, 1974.

CERTIFICATE con't.

8. I have no interest in the properties or securities of Westwind Mines Ltd., nor do I expect to receive or acquire any.

Dated this 15th Day of August 1974.



APPENDIX C

Diamond Drill Logs (74-1 - 74-5)

In Pocket

1. Location Map
2. Drill Sections

# DIAMOND DRILL RECORD

PROPERTY WESTWIND (STUART LAKE)

HOLE No. 74-1

DIP TEST		
Footage	Angle	
	Reading	Corrected
3.0'	-00	

Hole No. 74-1 Sheet No. 1 Lat. \_\_\_\_\_  
 Section \_\_\_\_\_ Dep. \_\_\_\_\_  
 Date Begun July 5, 1974 Bearing \_\_\_\_\_  
 Date Finished July 7, 1974 Elev. Collar \_\_\_\_\_

Total Depth 121.0'  
 Logged By J. Poloni

450' N.W. of E of Shaft along the road

DEPTH	FORMATION	SAMPLE No.	WIDTH OF SAMPLE	Au	Ag	Sb
0.0-28'	O/B					
28.0-29.3'	Slate with Py incl Bedding @ 10-15° Arg					
29.3-36.0	Qtz Carbonate Zone	501	29.3- 34.8-	4.7'		
	Dense white Qtz with banded Arg Mariposite	502	34.0- 36.0-	2.0'		
36.0-90.0	Slate with Minor Py Bedding @ 10-15° Arg Knotty Qtz inclusions to 1/2" @ 56.0' 1.3' altered zone Rx is					
	Slightly grey sil Minor Py					
	@ 67.0' Gougy fil ~~~ // to core					
	@ 67.0-78.5 Argillite is soft broken & mushy					
	Bedding of units @ 35°					
90.0-94.5	Vein & Qtz Carbonate					
	90.0-91.0 Qtz & Mariposite broken core	503	90.0- 94.5-	4.5'		
	91.0-91.5 Banded Arg					
	91.5-94.5 Qtz Vein & Mariposite					
94.5-100.0'	Arg Badly Fractured					



# DIAMOND DRILL RECORD

PROPERTY WESTWIND MINES LTD. (STUART LAKE)

HOLE No. 74-2

DIP TEST		
Footage	Angle	
	Reading	Corrected
0.0'	-00°	

Hole No. 74-2 Sheet No. 1 Lat. \_\_\_\_\_

Section \_\_\_\_\_ Dep. \_\_\_\_\_

Date Begun July 8, 1974 Bearing \_\_\_\_\_

Date Finished July 10, 1974 Elev. Collar \_\_\_\_\_

Total Depth 141.0'

Logged By J. Poloni

530' N.W. of E Shaft along road

DEPTH	FORMATION	SAMPLE No.	WIDTH OF SAMPLE			
0.0'-20.0'	O/B					
20.0'-85.0	Argillite					
	Dense silicious at times knotty					
	@ 30.0'-1" Qtz Str @ 70° Barren					
	@ 34.0 Ground Badly Broken					
	@ 38.0 Mud Gouge Fault Zone?					
	@ 41.0 Qtz Pebbles in Broken Core for 1"					
	@ 43.0 Qtz Pebbles in Broken Core for 1"					
	@ 53.0-55.0' Qtz - Carb zone					
	(Recovery 30%) Mariposite	504	53.0-55.0			
	Arg. Badly Broken to 64.0					
	@ 64-77.0' Broken Muddy Gouge					





# DIAMOND DRILL RECORD

PROPERTY WESTWIND MINES LTD.

HOLE No. 74-3

DIP TEST		
Footage	Angle	
	Reading	Corrected

Hole No. 74-3 Sheet No. 2  
 Section.....  
 Date Bcgun.....  
 Date Finished.....

Lat.....  
 Dep.....  
 Bearing.....  
 Elev. Collar.....

Total Depth 278'  
 Logged By J. Poloni

DEPTH	FORMATION	SAMPLE No.	WIDTH OF SAMPLE			
117-122.5	Carbonate Zone - Mariposite & Sulf Gougy Mat @ 121.0'	515	<del>117</del> 122.5	5.5		
122.5-129.0	Serpentine? As Above					
129.0-135.5	Breccia Zone	516	<del>129</del> 135.5	6.5'		
135.5-	Serpentine Soft Grey Minor Pyrite throughout					
	@ 181.0-183.0 Carbonate zone with Mariposite	517	<del>181.0</del> 183.5	2.5'		
183.5-193.0	Serpentine - soft gray minor Py & quartz stringers					
193-197.0	Similar - harder texture some carb stringers					
197-201.0	Brecciated some minor Py carb stringers					
201-205	Soft grey brecciated					
205-210.0	Carb zone mariposite Py	518	<del>206</del> 208	3.0		
210-214.0	Brecciated - Serpentine & Gouge					

# DIAMOND DRILL RECORD

PROPERTY WESTWIND MINES (STUART LAKE)

HOLE No. 74-3

DIP TEST		
Footage	Angle	
	Reading	Corrected
0.0'	-75°	

Hole No. 74-3 Sheet No. 1

Lat. ....

Total Depth 278'

Section .....

Dep. ....

Logged By J. Poloni

Date Begun July 11, 1974

Bearing S 34° W

Date Finished July 15, 1974

Elev. Collar .....

DEPTH	FORMATION	SAMPLE No.	WIDTH OF SAMPLE			
0.0-20.0	O/B					
20.0-68.2	Argillite Dense Black at times knobby Very Minor Qtz & Calc fils @ 40-50° Section of Py					
68.2-72.3	Qtz Carb Zone - Mariposite	506	68.2-72.3-	4.1		
		507	72.3-75.5-	4.2		
72.3-75.5	Altered Zone Light grey green	508	75.5-81.5-	5.0		
		509	81.5-88.0-	6.5		
76.5-93.7	Qtz - Carbonate Zone - Mariposite	510	88.0-93.7-	5.7		
		511	93.7-94.3-	1.1		
93.7-94.3	Qtz Vein #2 Zone Visible Sb N.Cs @ 70° F.Cs Blend					
94.3-97.5	Qtz Carb Zone Visible Sulf.	512	94.3-97.5-	2.7		
97.5-100.0	Qtz Vein N. & F.Cs Blend	513	97.5-100.0-	2.5		
100-109	Qtz Carb Zone Decreasing Mariposite Visible Sulf	514	100.0-109.0-	9.0'		
109-117	Serpentine? Sinuous wavy Qtz Fils and incl.					



# DIAMOND DRILL RECORD

PROPERTY WESTWIND MINES LTD. (STUART LAKE)

HOLE No. 74-4

DIP TEST		
Footage	Angle	
	Reading	Corrected
0-3'	-55°	

Hole No. 74-4 Sheet No. 1  
 Section \_\_\_\_\_  
 Date Begun July 16, 1974  
 Date Finished \_\_\_\_\_

Lat. \_\_\_\_\_  
 Dep. \_\_\_\_\_  
 Bearing \_\_\_\_\_  
 Elev. Collar 2520

Total Depth 185'  
 Logged By D.J. Gallen & J. Poloni

DEPTH	FORMATION	SAMPLE No.	WIDTH OF SAMPLE			
0-32	O.B.					
32-40	Slate					
40-88	Slate - Broken					
88-98	Brecciated - Gray soft minor pyrite					
98-105	Brecciated - Broken, Pyrite, Oxidized					
105-111	Brecciated - Hard Gray Pyrite					
111-119	Brecciated - Hard Gray Pyrite					
119-122	Brecciated - Hard Gray Pyrite Oxidized					
122-132	Brecciated quartz Stringer Pyrite					
132-134						
134-136	Quartz-Mariposite Pyrite	520	2.0'			
136-142	Quartz-Carb Mariposite Sb. Py.	521	6'0"			
142-144	Sb. Py. Core Ground Lost 1' Sb. Massive?	522	2'0"			
144-159	Brecciated Hard Grey Minor Py.					
	@ 159-163.5 Bx Zone					
163.5-169.5	Arg.					
		529	169.5-175			
169.5-182	Qtz.-Carb Zone	530	182			
	Mariposite throughout					
182-185	Serpentine					
	End of Hole 185'					

# DIAMOND DRILL RECORD

PROPERTY WESTWIND MINES LTD. (STUART LAKE)

HOLE No. 74-5

DIP TEST		
Footage	Angle	
	Reading	Corrected
0.0'	-70°	

Hole No. 74-5 Sheet No. 1  
 Section.....  
 Date Begun.....  
 Date Finished.....

Lat.....  
 Dep.....  
 Bearing.....  
 Elev. Collar.....

Total Depth 185'  
 Logged By J. Poloni

Same Location as 74-4

DEPTH	FORMATION	SAMPLE No.	WIDTH OF SAMPLE			
0.0-20.0'	O/B					
20.0-107.0	Argillite					
	Black fissile core broken rusty limonite section on fracture planes					
	@ 62.0-87.0					
	Ground more solid minor Qtz. fl @ 25°					
	@ 87.0-90.0					
	Bx Arg. Frags to 1" angular					
	@ 90.0-97.0					
	Massive dense Arg with Py cubes					
	@ 97.0-99.0					
	Bx. Arg.					
	@ 99.0-107.0					
	Mass. Arg. with Py. cubes					

# DIAMOND DRILL RECORD

PROPERTY WESTWIND MINES LTD.

HOLE No. 74-5

DIP TEST		
Footage	Angle	
	Reading	Corrected

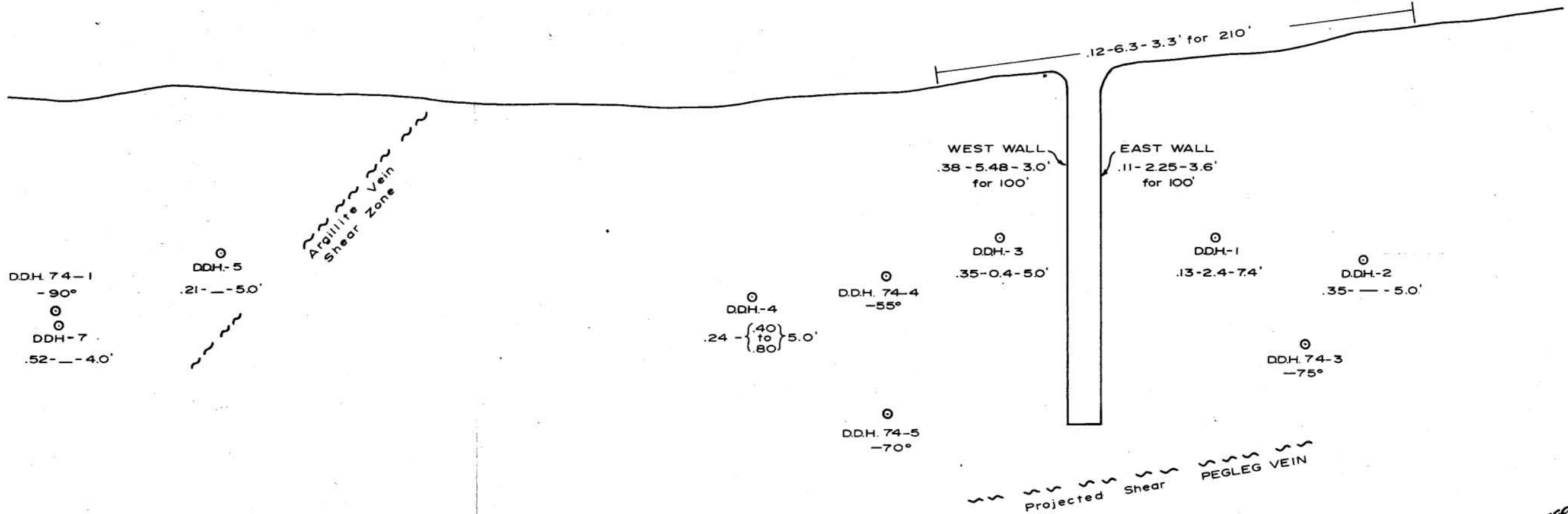
Hole No. .... Sheet No. 2  
 Section.....  
 Date Begun.....  
 Date Finished.....

Lat.....  
 Dep.....  
 Bearing.....  
 Elev. Collar.....

Total Depth 185'  
 Logged By J. Poloni

DEPTH	FORMATION	SAMPLE No.	WIDTH OF SAMPLE	Au.	Sb.		
107.0-119	Dense Hard Grey Sil Rx Minor Qtz. Fil @ 60°						
119.0-123	Arg.						
123-140.0	Dense Hard Grey Sil. Rx.						
140.0-146	Serpentine?						
146.0-149.0	Qtz-Carb Zone With Meriposite	531	146-				
		532	149-				
149.0-151	Rx. Qtz. Vein						
151-153	Qtz. Vein						
	60% Qtz. & Arg. fil. Broken Core						
	Visible Sb. @ 152 Py						
153-159	Arg. & Qtz. Fil	533	153-				
159-162.5	Qtz. Vein with Meriposite	534	159-				
162.5-172	Qtz. Carb. Meriposite	535	162.5-				
		536	167-				
172-185.0	Arg. & Bx. Arg.						
	End of Hole 185						

2500' EL.



DDH 74-2  
-90°

DDH 74-1  
-90°  
DDH-7  
.52 - 4.0'

DDH-5  
.21 - 5.0'

Argillite Vein  
Shear Zone

DDH-4  
.24 - {40 to 80} 5.0'

DDH 74-4  
-55°

DDH 74-5  
-70°

WEST WALL  
.38 - 5.48 - 3.0'  
for 100'

DDH-3  
.35 - 0.4 - 5.0'

EAST WALL  
.11 - 2.25 - 3.6'  
for 100'

DDH-1  
.13 - 2.4 - 7.4'

DDH-2  
.35 - 5.0'

DDH 74-3  
-75°

Projected Shear  
PEGLEG VEIN

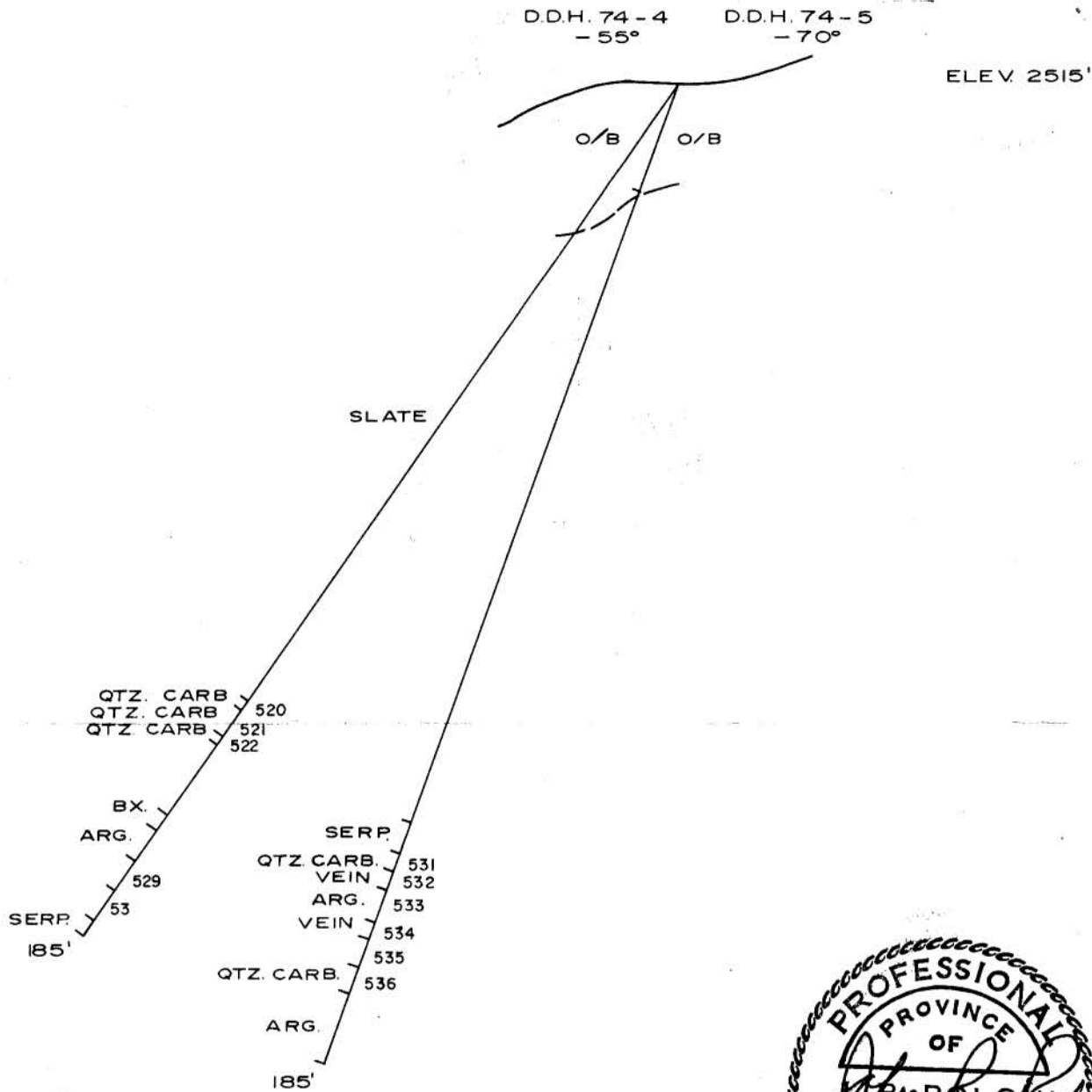
Department of  
Mines and Petroleum Resources  
ASSESSMENT REPORT  
NO. **5136** MAP **#9**



FIG. 6

LEGEND  
Au (oz.) Sb (%) Width  
.12 - 6.3 - 3.3'

WESTWIND MINES LTD. (N.P.L.)	
STUART LAKE GOLD-ANTIMONY DEPOSIT OMINECA M.D. LONGITUDINAL SECTION PLANE OF MAIN VEIN (LOOKING N.E.)	
JOHN R. POLONI B. Sc., P. Eng.	
SCALE: 1" = 50'	AUGUST 15, 1974



LEGEND

- QTZ. CARB. QUARTZ CARBONATE
- ARG. ARGILLITE
- SERP. SERPENTINE
- BX. BRECCIA



Department of  
 Mines and Petroleum Resources  
 ASSESSMENT REPORT  
 NO. **5136** MAP **#8**

WESTWIND MINES LTD. (N.P.L.)

STUART LAKE  
 GOLD-ANTIMONY DEPOSIT  
 OMINECA M.D.  
 SECTION  
 D.D.H. 74-4, 74-5  
 (LOOKING S.W.)

JOHN R. POLONI B. Sc., P. Eng.

SCALE: 1" = 30'      AUGUST 15, 1974



DD.H. 74-3  
-75°

ELEV. 2520'

O/B

ARG.

QTZ. CARB 506

ALTERED 507

508

QTZ. CARB 509

VEIN  
QTZ. CARB  
VEIN 510

511  
512  
513  
QTZ. CARB 514

SERP

CARB. 515

SERP

BX. 516

SERP

CARB. 517

QTZ - CARB. 518

QTZ. VEIN 519

278'

LEGEND

QTZ-CARB QUARTZ CARBONATE  
ARG. ARGILLITE  
SERP SERPENTINE  
BX. BRECCIA



Department of  
Mines and Petroleum Resources

ASSESSMENT REPORT

NO. **5136** MAP **#7**

WESTWIND MINES LTD. (INCL.)

STUART LAKE  
GOLD-ANTIMONY DEPOSIT  
OMINECA M.D.

SECTION  
D.D.H. 74-3

(LOOKING S.W.)

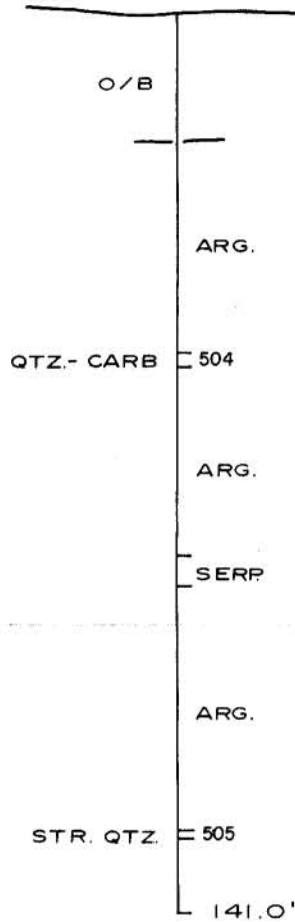
JOHN R. POLONI B. Sc., P. Eng.

SCALE: 1" = 30'

AUGUST 15, 1974

DDH.74-2  
-90

ELEV. 2490'



LEGEND

QTZ-CARB QUARTZ-CARBONATE  
ARG. ARGILLITE  
STR. STRINGER  
SERP SERPENTINE

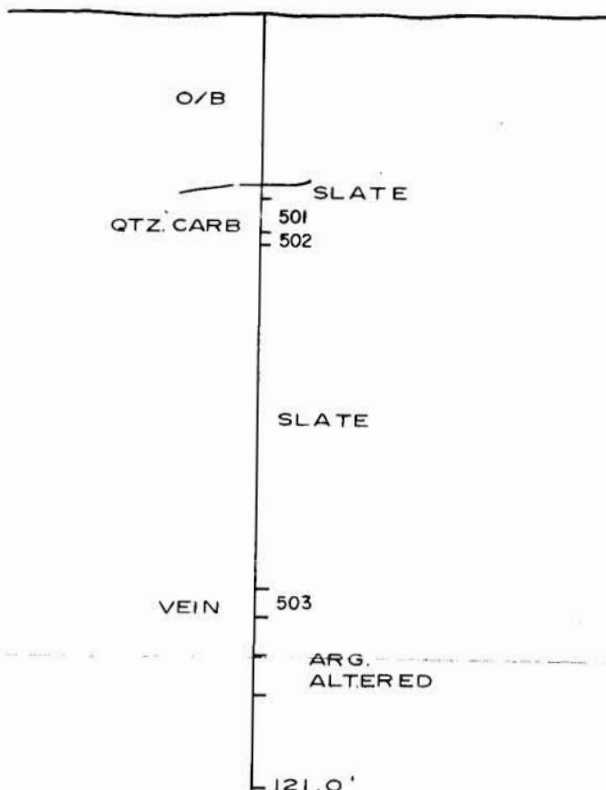


Department of  
Mines and Petroleum Resources  
ASSESSMENT REPORT  
NO. **5136** MAP **#6**

WESTWIND MINES LTD. (INCL.)  
STUART LAKE  
GOLD-ANTIMONY DEPOSIT  
OMINECA M.D.  
SECTION  
D.D.H. 74-2  
(LOOKING S.W.)  
JOHN R. POLONI B. Sc., P. Eng.  
SCALE: 1" = 30'      AUGUST 15, 1974

DDH.74-1  
-90°

ELEV. 2490'



LEGEND

QTZ. CARB. QUARTZ CARBONATE

ARG. ARGILLITE



Department of  
Mines and Petroleum Resources

ASSESSMENT REPORT

NO. **5136** MAP **#5**

WESTWIND MINES LTD. (N.P.L.)

STUART LAKE  
GOLD-ANTIMONY DEPOSIT  
OMINECA M.D.

SECTION  
DDH. 74-1  
(LOOKING S.W.)

JOHN R. POLONI B. Sc., P. Eng.

SCALE: 1" = 30'

AUGUST 15, 1974