

LOCATION MAP - GROUPS IV TO VII

CRY LAKE - JO4 I/I

5738

m
1.25,000

KIN & IRIS CLAIMS
(GROUP VII)

JENN CLAIMS
(GROUP IV)

KAN, PY &
BRUN CLAIMS
(GROUP VII)

JAMES RYAN CLAIMS
(GROUP V)

SPATSIZI PLATEAU

RIVER

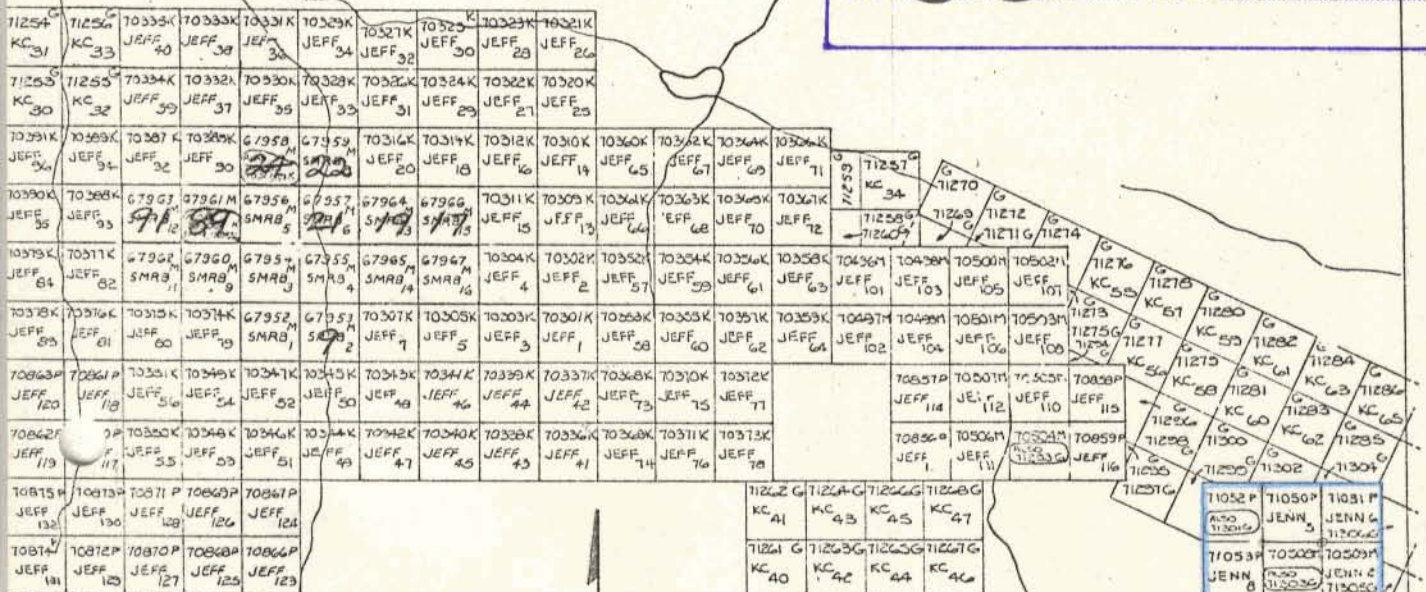
PLATEAU

CLAIM INDEX MAP - JENN, JANE + RYAN CLAIMS

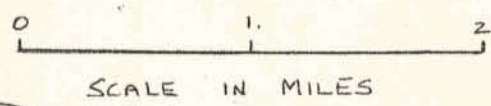
104 I 1/W.

Department of
Mines and Petroleum Resources
ASSESSMENT REPORT
NO. **5138** MAP #2

6



2P		
3P		
2		
4P	10976P PY 55	10978P PY 57
3P	10977P PY 56	10979P PY 58
4		



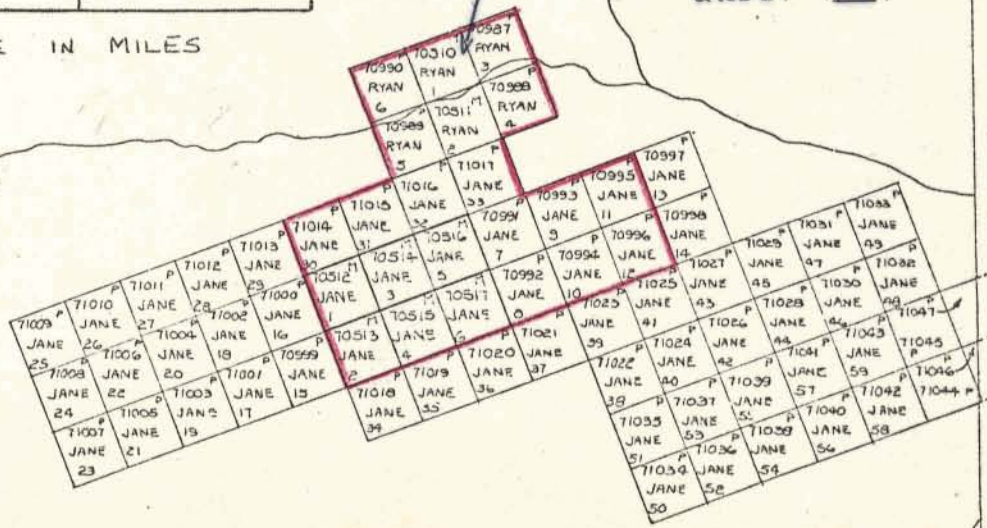
11262 G	11264 G	11266 G	11268 G
KC 41	KC 43	KC 45	KC 47
11261 G	11263 G	11265 G	11267 G
KC 40	KC 42	KC 44	KC 46

11052 P	11050 P	11031 P
JENN 8	JENN 6	JENN 4
11053 P	11051 P	11032 P
JENN 9	JENN 7	JENN 5

5

GROUP V.

GROUP IV.



4

125° 30'
58° 15'

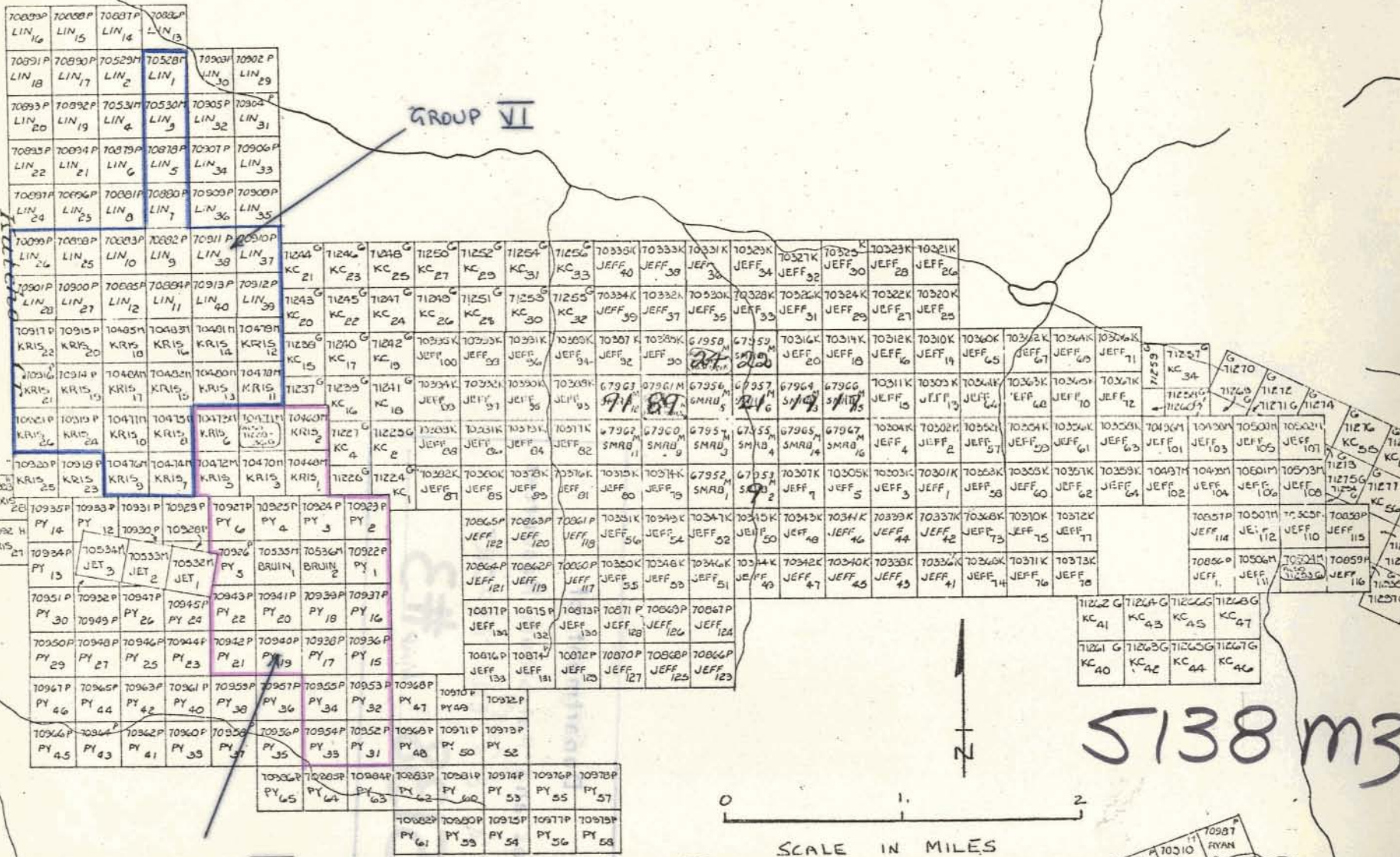
54575 H CHARRIS 3	54580 H CHARRIS 4	54605 H CHARRIS 5	54610 H CHARRIS 6
54577 H CHARRIS 2	54578 H CHARRIS 1		

CLAIM INDEX MAP - LIN, KRIS, BRUIN + PY CLAIMS

104 I/I W

6

GROUP VI



5

GROUP VII

71431 H BOW 20	71435 H BOW 18	71433 H BOW 16	71431 H BOW 14
71426 H BOW 19	71434 H BOW 17	71432 H BOW 15	71430 H BOW 13
71421 H	71425 H	71423 H	71421 H

70997 RYAN 6	70998 RYAN 5	70999 RYAN 4	70997 RYAN 3
70995 RYAN 2	70996 RYAN 1	70997 RYAN 0	70998 RYAN -1
70999 JANE 33	70998 JANE 32	70997 JANE 31	70996 JANE 30
70995 JANE 29	70994 JANE 28	70993 JANE 27	70992 JANE 26

DIAMOND DRILL CORE LOG

DRILL HOLE NO. Jenn #1 LOCATION: Jenn #1 claim

AZIMUTH: 171° CORE SIZE: BQ

INCLINATION: -50° CORE STORAGE: Property

DESCRIPTION

FROM	TO	DESCRIPTION
0	20	Overburden and casing.
20	110	Quartz Augen-Sericite Schist: fine-grained, greenish-grey; quartz eyes to 1/8" with acid fragments to 1/2"; weakly sheared at 70° c/a; chlorite and sericite on foliation planes; minor pyrite, trace chalcopyrite.
110	135	Chlorite-Talc Schist: fine-grained, green; few acid fragments; chlorite and talc on foliation planes at 70 - 75° c/a; moderately sheared; minor pyrite, trace chalcopyrite.
135	203	Quartz-Talc Schist: very fine-grained, grey; minor acid fragments; moderately sheared at 75° c/a; talc on foliation planes; minor pyrite, chalcopyrite.
203	269.5	Chlorite-Talc Schist: similar to 110' - 135', with chloritic and non-chloritic sections; sheared at 75° c/a; minor pyrite, trace chalcopyrite, bornite, tetrahedrite (?).
269.5	288	Quartz Augen-Sericite Schist: similar to 20' - 110', but more intensely sheared.
288	332	Dacite (?): very fine-grained, green; quartz eyes to 1/8"; weakly sheared at 75° c/a; chlorite and sericite on foliation planes; minor pyrite, trace chalcopyrite.
332	357	Quartz Augen-Talc (Sericite) Schist: like 269.5' - 288'.
	357	END OF HOLE.

J. Peter Neilans

DIAMOND DRILL CORE LOG

DRILL HOLE NO. Jane B-1 LOCATION: Jane #3 claim

AZIMUTH: 155° CORE SIZE: BQ

INCLINATION: -50° CORE STORAGE: Property

DESCRIPTION

FROM	TO	DESCRIPTION
0	6	Overburden and casing.
6	152	Chlorite-Sericite Schist: fine-grained, green and grey; finely laminated, granular; foliated strongly at 75 - 90° c/a; chlorite and sericite along foliation planes; occasional siliceous interbeds.
152	168	Quartz Sericite Schist: fine-grained, yellowish-grey; fine laminated, granular; kink folded; trace pyrite on foliation planes at 80° c/a.
168	177	Argillite: aphanitic, black; calcic, graphitic; brecciated in places; minor pyrite.
177	204	Quartz Sericite Schist: like 152' - 168'.
204	284.5	Chlorite-Epidote Schist: fine-grained, green; acid fragments in parts, generally homogeneous; finely laminated with grey-green silty layers; chlorite and epidote alteration; minor pyrite.
284.5	287	Quartz-Chlorite Schist: very fine-grained, light green, homogeneous; weakly sheared at 85° c/a.
287	293	Quartz-Sericite Schist: like 152' - 158'.
293	407	Chlorite-Epidote Schist: like 204 - 284.5'; more calcic; occasional quartzo-feldspathic section; minor pyrite.
407		END OF HOLE.

J. Peter Neilans

DIAMOND DRILL CORE LOG

DRILL HOLE NO.	Lin #1	LOCATION:	Lin #1 claim
AZIMUTH:	180°	CORE SIZE:	BQ
INCLINATION:	-50°	CORE STORAGE:	Property

DESCRIPTION

FROM	TO	
0	15	Overburden and casing.
15	62	Calcic Argillite-Breccia-Limestone: interbedded calcite rich units consisting of aphanitic, black, graphitic argillite, fine-grained, grey, crystalline limestone, and mottled, grey, sheared breccia; breccia contains fragments of limestone in an argillaceous matrix; trace pyrite.
62	87	Limestone: fine-grained, granular, grey to black; graphitic in places; trace pyrite, chalcopryrite.
87	104	Calcic Argillite-Breccia-Limestone: like 15' - 62'.
104	110	Banded Argillaceous Limestone: fine-grained, black; banded with white calcite bands parallel to foliation (80° c/a); minor pyrrhotite, pyrite.
110	207	Calcic Argillite-Breccia-Limestone: like 15' - 62'; pyrite, pyrrhotite and trace chalcopryrite.
	207	END OF HOLE.

J. Peter Neilans

DIAMOND DRILL CORE LOG

DRILL HOLE NO.	Kris A-1	LOCATION:	Kris #6 claim
AZIMUTH:	180°	CORE SIZE:	IEX
INCLINATION:	-50°	CORE STORAGE:	Property

DESCRIPTION

FROM	TO	
0	41	Overburden and casing.
41	81.5	Calcite-Quartz-Chlorite Schist: fine-grained, pale green; banded with calcite and chlorite rich zones; occasional quartz eye; foliated weakly at 50 - 60° c/a.
81.5	206	Argillite: fine-grained to aphanitic, black; occasional limey sections; graphitic; foliated at 50 - 90° c/a; Minor pyrite and pyrrhotite seams.
206	215.5	Calcite-Chert-Chlorite Schist: grey, fine-grained, granular; chert fragments to 1"; minor chlorite and calcite; pyrrhotite.
	215.5	END OF HOLE.

J. Peter Heilans

STATEMENT OF QUALIFICATIONS

I, J. Peter Neilans, of Vancouver, British Columbia, hereby certify the following qualifications:

(a) I obtained a B.A.Sc. degree in Geological Engineering (1973) from the University of British Columbia, Vancouver, B.C.

(b) I have been practising my profession as a geological engineer in Canada for the last year.

J. Peter Neilans

J. Peter Neilans

COST STATEMENT - GROUP IV.

A. <u>CAMP COST CALCULATION</u> (for entire drilling project)	
Equipment (tents, lumber, radios, etc.)	\$ 6,268.10
Fuel (stove oil, propane, gas, etc.)	1,362.37
Food	3,489.14
Air Support (includes mobilization costs)	11,298.55
Fixed Wing	\$ 3,360.21
Helicopter	7,938.34
	<hr/>
TOTAL:	\$22,418.16
	<hr/> <hr/>

\$22,418.16 ÷ 348 man-days = \$64.42/man-day
- camp costs were calculated at \$64.42/man-day

B. SALARY CALCULATION (Supervisory & Cook)

HOLE	DATES	PERSONNEL *	RATE	TOTAL
Jenn #1	27/7-30/7	P. Neilans (G)	2 d x \$35/d	\$ 256.00
		R. Wittebolle (A)	2 d x \$21/d	
		D. Lindwall (C)	4 d x \$36/d	

* (G) Geologist, (A) Assistant, (C) Cook

COST STATEMENT - GROUP V.

A. <u>CAMP COST CALCULATION</u> (for entire drilling project)	
Equipment (tents, lumber, radios, etc.)	\$ 6,268.10
Fuel (stove oil, propane, gas, etc.)	1,362.37
Food	3,489.14
Air Support (includes mobilization costs)	11,298.55
Fixed Wing	\$ 3,360.21
Helicopter	7,938.34
	<hr/>
	TOTAL: \$22,418.16
	<hr/> <hr/>

\$22,418.16 ÷ 348 man-days = \$64.42/man-day
- camp costs were calculated at \$64.42/man-day

B. SALARY CALCULATION (Supervisory & Cook)

HOLE	DATES	PERSONNEL*	RATE	TOTAL
Jane B-1	18/7-22/7	P. Neilans (G)	1.5d x \$35/d	\$192.00
		R. Wittebolle (A)	1.5d x \$21/d	
		D. Lindwall (C)	3 d x \$36/d	

* (G) Geologist, (A) Assistant, (C) Cook

COST STATEMENT - GROUP VI.

A. CAMP COST CALCULATION (for entire drilling project)

Equipment (tents, lumber, radios, etc.)		\$ 6,268.10
Fuel (stove oil, propane, gas, etc.)		1,362.37
Food		3,489.14
Air Support (includes mobilization costs)		11,298.55
Fixed Wing	\$ 3,360.21	
Helicopter	7,938.34	
		<hr/>
	TOTAL:	\$ 22,418.16

\$ 22,418.16 ÷ 348 man-days = \$64.42/man-day
- camp costs were calculated at \$64.42/man-day

B. SALARY CALCULATION (Supervisory & Cook)

HOLE	DATES	PERSONNEL*	RATE	TOTAL
Lin #1	3/8-8/8	P. Neilans (G)	6 d x \$35/d	\$ 552.00
		R. Wittebolle (A)	6 d x \$21/d	
		D. Lindwall (C)	6 d x \$36/d	

* (G) Geologist, (A) Assistant, (C) Cook

COST STATEMENT - GROUP VII.

A. CAMP COST CALCULATION (for entire drilling project)

Equipment (tents, lumber, radios, etc.)	\$	6,268.10
Fuel (stove oil, propane, gas, etc.)		1,362.37
Food		3,489.14
Air Support (includes mobilization costs)		11,298.55
Fixed Wing	\$	3,360.21
Helicopter		7,938.34
		<hr/>
	TOTAL:	\$ 22,418.16
		<hr/> <hr/>

\$ 22,418.16 ÷ 348 man-days = \$64.42/man-day
- camp costs were calculated at \$64.42/man-day

B. SALARY CALCULATION (Supervisory & Cook)

HOLE	DATES	PERSONNEL*	RATE	TOTAL
Kris A-1	23/7-27/7	P. Neilans (G)	2.5 d x \$35/d	\$140.00
		R. Wittebolle (A)	2.5 d x \$21/d	

* (G) Geologist, (A) Assistant

SUMMARY OF DRILLING - GROUP NO. VI

WELL NO.	GRID LOCATION	DATES	CONTRACTOR	DRILL TYPE	AZIMUTH	ANGLE	TOTAL LENGTH	HORIZ. PROJ.	VERT. PROJ.	TOTAL COST	COST/FOOT
Lin #1	L4E; 1+30N	3/8-8/8	Arctic Diamond Drilling Ltd.	BBS-1	180°	-50°	207'	133'	158'	\$ 8,476.01	\$ 40.95

SUMMARY OF DRILLING - GROUP NO. V.

HOLE NO.	GRID LOCATION	DATES	CONTRACTOR	DRILL TYPE	AZIMUTH	ANGLE	TOTAL LENGTH	HORIZ. PROJ.	VERT. PROJ.	TOTAL COST	COST/FOOT
Jane B-1	L20E; 2+25N	22/7-24/7	Arctic Diamond Drilling Ltd.	BBS-1	155°	-50°	407'	262'	312'	\$ 9,077.58	\$ 22.30

SUMMARY OF DRILLING - GROUP NO. IV.

HOLE NO.	GRID LOCATION	DATES	CONTRACTOR	DRILL TYPE	AZIMUTH	ANGLE	TOTAL LENGTH	HORIZ. PROJ.	VERT. PROJ.	TOTAL COST	COST/FOOT
Jenn #1	L0+25W; 3+50N	27/7-30/7	Arctic Diamond Drilling Ltd.	BBS-1	171°	-50°	357'	239'	274'	\$ 8,612.48	\$ 24.12

SUMMARY OF DRILLING - GROUP NO. ...I

WELL NO.	GRID LOCATION	DATES	CONTRACTOR	DRILL TYPE	AZIMUTH	ANGLE	TOTAL LENGTH	HORIZ. PROJ.	VERT. PROJ.	TOTAL COST	COST/FOOT
Kris A-1	L00; 3+50 N	23/7-27/7	D.W. Coates Enterprises Ltd.	Morex 350	180°	-50°	215'	138'	165'	\$ 5,435.19	\$ 25.28

DRILL COST SUMMARY

GROUP NO. IV.

HOLE NO.	DIRECT DRILL.	MOB/DEMOB	FUEL	HELICOPTER	CAMP	SALARIES SUPERVISORY/COOK	TOTAL	COST/FOOT
Jenn #1	\$ 3,611.80	\$ 811.53	\$ 350.59	\$ 2,036.48	\$ 1,546.08	\$ 256.00	\$ 8,612.48	\$ 24.12

DRILL COST SUMMARY

GROUP NO. V

HOLE NO.	DIRECT DRILL.	MOB/DEMOB	FUEL	HELICOPTER	CAMP	SALARIES SUPERVISORY/COOK	TOTAL	COST/FOOT
Jane B-1	\$ 4,082.80	\$ 811.53	\$ 399.69	\$ 2,432.00	\$ 1,159.56	\$ 192.00	\$ 9,077.58	\$ 22.30

DRILL COST SUMMARY

GROUP NO. VI

HOLE NO.	DIRECT DRILL.	MOB/DEMOB	FUEL	HELICOPTER	CAMP	SALARIES SUPERVISORY/COOK	TOTAL	COST/FOOT
Lin #1	\$ 2,218.30	\$ 811.53	\$ 203.28	\$ 1,792.00	\$ 2,898.90	\$ 552.00	\$ 8,476.01	\$ 40.95

DRILL COST SUMMARY

GROUP NO. VII

HOLE NO.	DIRECT DRILL.	MOB/DEMOB	FUEL	HELICOPTER	CAMP	SALARIES SUPERVISORY/COOK	TOTAL	COST/FOOT
Kris A-1	\$ 1,855.36	\$ 702.11		\$ 1,771.52	\$ 966.30	\$ 140.00	\$ 5,435.19	\$ 25.28

AUG 12 1974

ARCTIC DIAMOND DRILLING LTD.

P.O. Box 3204 18¹/₂ Industrial Road
Whitehorse, Yukon Territory Y1A 2V1

730 - 510 W. Hastings Street,
Vancouver, B.C.

Marwell Area - Phone ~~668-2440~~ 667-6434

Phone 688-3328

July 31, 1974

INVOICE #1610

IN ACCOUNT WITH:

Imperial Oil Limited,
1281 West Georgia Street,
Vancouver 5, B.C.

Drilling charges July 16 - 31, 1974 (Rainbow Lake Project)

Hole: 8 x 50° x BQ

Moving

109 man hours @ \$8.00 per hour =	\$872.00	
28 machine hours @ \$7.00 per hour =	<u>196.00</u>	\$1,068.00

Testing

4 tests @ \$23.00 per test =		\$ 92.00
------------------------------	--	----------

Overburden

0 - 19 = 19 feet @ \$8.40 per foot =		159.60
--------------------------------------	--	--------

Coring

19 - 500 = 481 feet @ \$8.40 per foot =	\$4,040.40	
500 - 607 = 107 feet @ \$9.15 per foot =	<u>979.05</u>	<u>\$5,019.45</u>
		\$6,339.05

Hole: B-1 x 50° x BQ

Moving

56 man hours @ \$8.00 per hour =	\$448.00	
18 machine hours @ \$7.00 per hour =	<u>126.00</u>	\$ 574.00

Testing

3 tests @ \$23.00 per test =		\$ 69.00
------------------------------	--	----------

Overburden

0 - 6 = 6 feet @ \$8.40 per foot =		\$ 50.40
------------------------------------	--	----------

Coring

6 - 407 = 401 feet @ \$8.40 per foot =		\$3,368.40
--	--	------------

Reaming Casing

6 - 9 = 3 feet @ \$7.00 per foot =		<u>\$ 21.00</u>	\$4,082.80
------------------------------------	--	-----------------	------------

Hole: A-1 x 50° x BQ

Moving

54 man hours @ \$8.00 per hour =	\$432.00	
17 machine hours @ \$7.00 per hour =	<u>119.00</u>	\$ 551.00

Testing

2 tests @ \$23.00 per test =		\$ 46.00
------------------------------	--	----------

ARCTIC DIAMOND DRILLING LTD. (

Page 2

Invoice #1610 - Imperial Oil Limited - Cont'd

<u>Overburden</u>			
0 - 9 = 9 feet @ \$8.40 per foot =	\$ 75.60	\$	75.60
<u>Coring</u>			
9 - 307 = 298 feet @ \$8.40 per foot =		\$2,503.20	
<u>Reaming Casing</u>			
9 - 11 = 2 feet @ \$7.00 per foot =		\$ 14.00	\$3,189.80

Hole: Jenn-1 x 50° x BQ

<u>Moving</u>			
56 man hours @ \$8.00 per hour =	\$448.00		
16 machine hours @ \$7.00 per hour =	<u>112.00</u>	\$	560.00
<u>Testing</u>			
2 tests @ \$23.00 per test =		\$	46.00
<u>Overburden</u>			
0 - 20 = 20 feet @ \$8.40 per foot =		\$	168.00
<u>Coring</u>			
20 - 357 = 337 feet @ \$8.40 per foot =		\$2,830.80	
<u>Reaming Casing</u>			
20 - 21 = 1 foot @ \$7.00 per foot =		\$ 7.00	\$3,611.80

Hole: -----

<u>Moving</u>			
100 man hours @ \$8.00 per hour =	\$800.00		
22 machine hours @ \$7.00 per hour =	<u>154.00</u>	\$	<u>954.00</u>

TOTAL INVOICE \$18,177.45

Deduct 384.00
 Pay Bal. 17,793.45

APPROVED

Hammond

653 = 17,793.45

Services -
Diamond Drilling

NB Item deducted
 Frontier Helicopters Ltd
 Invoice dated Aug 2/74
 Paid by Imperial Oil Ltd
 for Arctic D.D. account
 See attached copies
 J.S.

AUG 19 REC'D

ARCTIC DIAMOND DRILLING LTD.

P.O. Box 3204, 18th Industrial Road
Whitehorse, Yukon Territory Y1A 2V1

730 - 510 W. Hastings Street.
Vancouver, B.C.

Marwell Area - Phone 668-2440 667-0894

Phone 688-3328

August 8, 1974

INVOICE #1621

IN ACCOUNT WITH:

Imperial Oil Limited,
1241 West Georgia Street,
Vancouver 5, B.C.

APPROVED

[Signature]
6053

Drilling charges August 1 - 8, 1974 (Rainbow Lake Project)

Service - Diamond Drilling

Hole: Kris-0-1 x 50° x BQ

Moving

6 man hours @ \$8.00 per hour = \$ 48.00
3 machine hours @ \$7.00 per hour = 21.00 \$ 69.00

Testing

2 test @ \$23.00 per test = \$ 46.00

Overburden

0 - 6 = 6 feet @ \$8.40 per foot = \$ 50.40

Coring

6 - 307 = 301 feet @ \$8.40 per foot = \$2,528.40

Reaming Casing

6 - 7 = 1 foot @ \$7.00 per foot = \$ 7.00 \$2,700.80

Hole: Lin-1 x 50° x BQ

Moving

45 man hours @ \$8.00 per hour = \$360.00
19.5 machine hours @ \$7.00 per hour = 73.50 \$ 433.50

Testing

2 tests @ \$23.00 per test = \$ 46.00

Overburden

0 - 15 = 15 feet @ \$8.40 per foot = \$ 126.00

Coring

2 - 192 = 192 feet @ \$8.40 per foot = 11,612.80 \$2,213.70

Moving Out (to West Lake)

180 man hours @ \$8.00 per hour = \$1,440.00

Demobilisation Charge

(Re: article 14 of Contract) 1/2 x 1900.00 = \$ 950.00

TOTAL INVOICE

\$7,309.10

(Total Contract - 4,891 feet)

... to Calgary Aug 19

AUG 14 1974

INVOICE

Imperial Oil Limited,
3 - 1281 West Georgia Street,
Vancouver 5, B.C.

D.W. COATES ENTERPRISES LTD.

1668 - 1st AVENUE WEST
VANCOUVER 9, B.C.

INVOICE NO.: 761
JOB NO.: 211-8

Date: August 12, 1974.

RE: Dease Lake Area Drilling.

PERIOD: July 10 - 31, 1974.

Labour	\$ 4,222.75
Mobilization	504.65
Drill Rental	383.33
Pump Rental	86.67
Down-the-Hole Equipment	212.71
Operating Charge	154.70
Materials Consumed	1,586.77
Diamond Cutout	(1,281.77)
	<hr/>
	\$ 5,869.81
	<hr/> <hr/>

APPROVED
J. Mansel

 6053 =
 6055 =

Service Diamond Drilling

E. & O. E.

Labour:

C. Bouvier:	✓ 120 hrs. @ \$5.91/hr.	\$ 709.20	
	✓ 56 hrs. @ 8.87/hr.	496.72	
W. Coates :	✓ 104 hrs. @ \$4.51/hr.	469.04	
	✓ 56 hrs. @ 6.77/hr.	379.12	
Bonus:	✓ July 16 - 31, 1974:	<u>1,057.75</u>	
		\$3,111.83	
	✓ Employee Benefits @ 15%:	<u>466.77</u>	
		3,578.60	
	✓ Overhead & Profit @ 18%:	<u>644.15</u>	\$ 4,222.75

Mobilization

✓ 2 ✓ Air fares Vancouver to Watson Lake @ \$90.00	\$180.00	
✓ Canadian Freightways Inv. #483811	<u>258.83</u>	
	438.83	
✓ Plus 15%:	<u>65.82</u>	\$ 504.65

Drill Rental

Morex 350 Drill : ✓ 2/3 mo. @ ✓ \$575.00/month		\$ 383.33
--	--	-----------

Pump Rental

2 Hypro Pumps : ✓ 2/3 mo. @ ✓ \$65.00/month/pump		\$ 86.67
--	--	----------

Down-the-Hole Equipment

✓ 2/3 month @ \$55.00/month ✓	\$ 36.67	
✓ 652 feet @ .27/foot ✓	<u>176.04</u>	\$ 212.71

Operating Charge

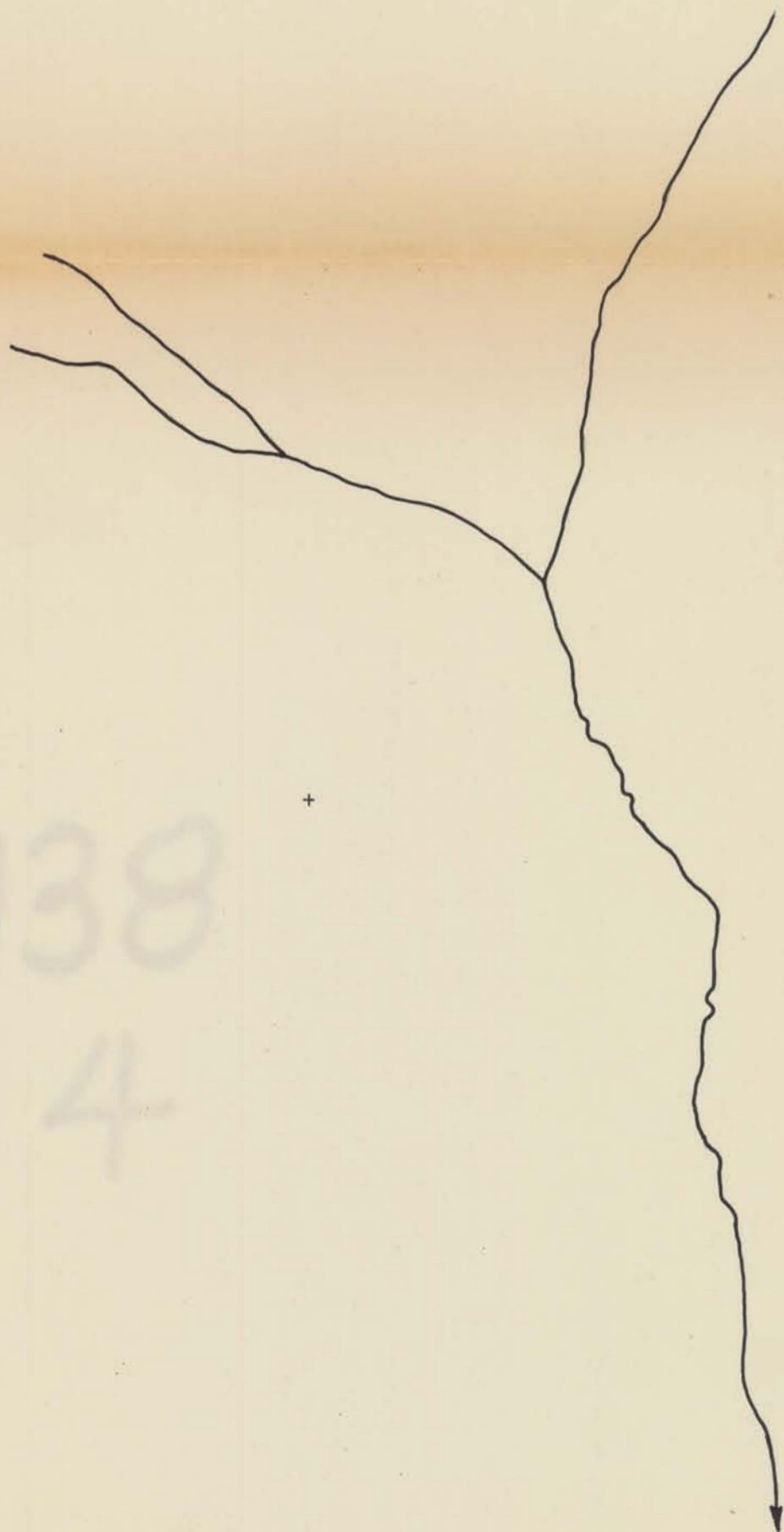
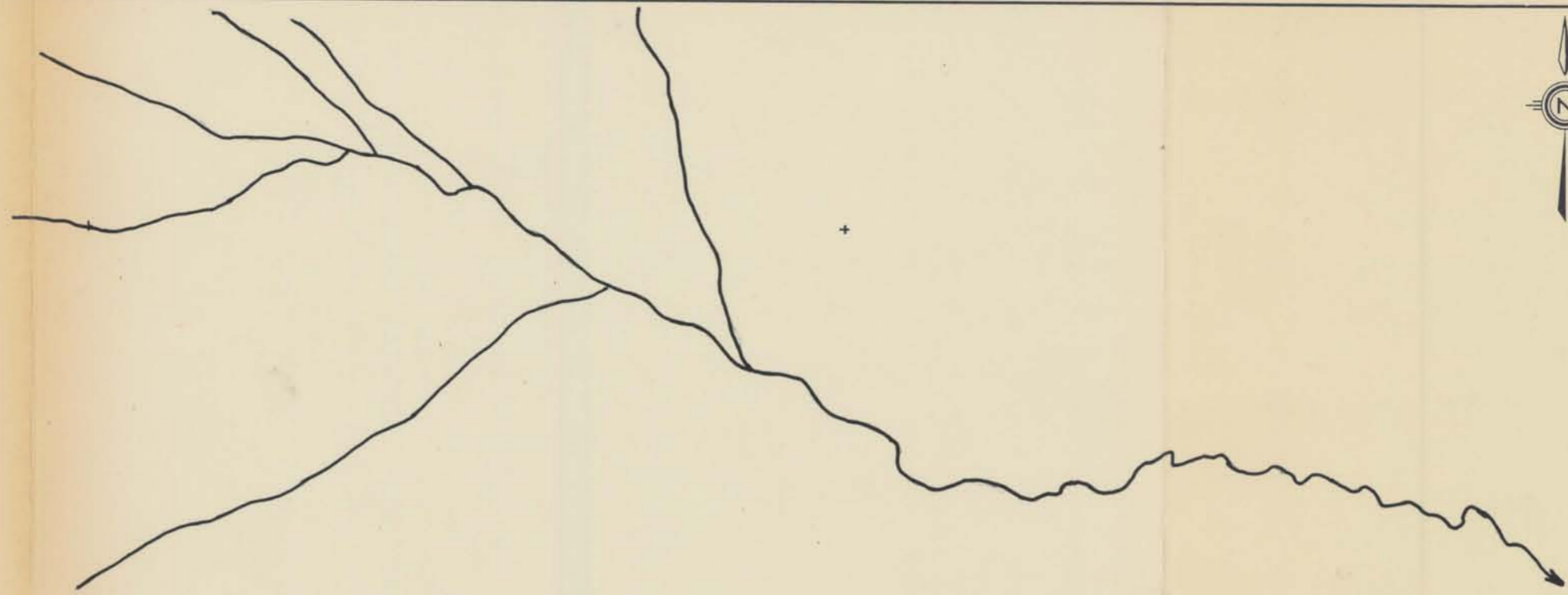
<u>Date</u>	<u>Hours</u>		
July 20	9 ✓		
" 21	8½ ✓		
" 22	9 ✓		
" 23	2½ ✓		
" 24	7½ ✓		
" 25	9 ✓		
" 26	9 ✓		
" 27	9 ✓		
" 28	1½ ✓		
" 29	7½ ✓		
" 30	9 ✓		
" 31	9½ ✓		
	<u>91</u> hours @ \$1.70/hr.		\$ 154.70

Consumed Materials

5	IEX	Fine Stone Morisette Core Bits @ \$117.30	\$ 586.50	
4	IEX	200's AA Core Bits @ \$83.40	333.60	
2	IEX	100's AA " " @ 82.65	165.30	
2	IEX	Morisette Reaming Shells @ \$122.00	244.00	
12	IEX	Core Springs @ \$4.20	50.40	
			<u>\$1,379.80</u>	
		Plus 15%:	206.97	\$ 1,586.77

Diamond Cutout

6	IEX	200's Bits (J.K.Smit)	141'	\$ 216.30	
6	IEX	100's " (" ")	151'	233.30	
12	IEX	100's " (" ")	254'	466.87	
5	IEX	100's " (Wesdrill)	97'	<u>198.11</u>	
				\$1,114.58	
		Plus 15%:		<u>167.19</u>	\$ (1,281.77)



LOCATION MAP
 JENN 1-9 CLAIMS
 GROUP IV.

Department of
 Mines and Petroleum Resources
 ASSESSMENT REPORT
 NO. 5138 MAP #4

SYMBOLS

- Drift-covered area
- Rock outcrop, area of outcrop, float
- Geological boundary (defined, approximate interpreted)
- Bedding, tops known (horizontal, inclined, vertical, overturned, dip unknown)
- Bedding, tops unknown (inclined, vertical, dip unknown)
- Schistosity, gneissosity, cleavage, foliation (horizontal inclined, vertical, dip unknown)
- Lineation, axes of minor folds (horizontal, inclined, vertical)
- Drag-fold (arrow indicates plunge)
- Fault (defined, approximate, interpreted)
- Fault (inclined, vertical)
- Fault (solid circle indicated downthrow side, arrows indicate relative movement)
- Thrust fault (approximate, interpreted)
- Shearing and dip
- Joint (horizontal, inclined, vertical, dip unknown)
- Syncline (defined, approximate)
- Anticline (defined, approximate)
- Anticline and syncline (overturned)
- Intensity (weak, moderate, strong)

- Trench
- Adit or tunnel
- Rock dump or tailings
- Quarry or mine
- Shaft, raise, winze
- Diamond-drill hole

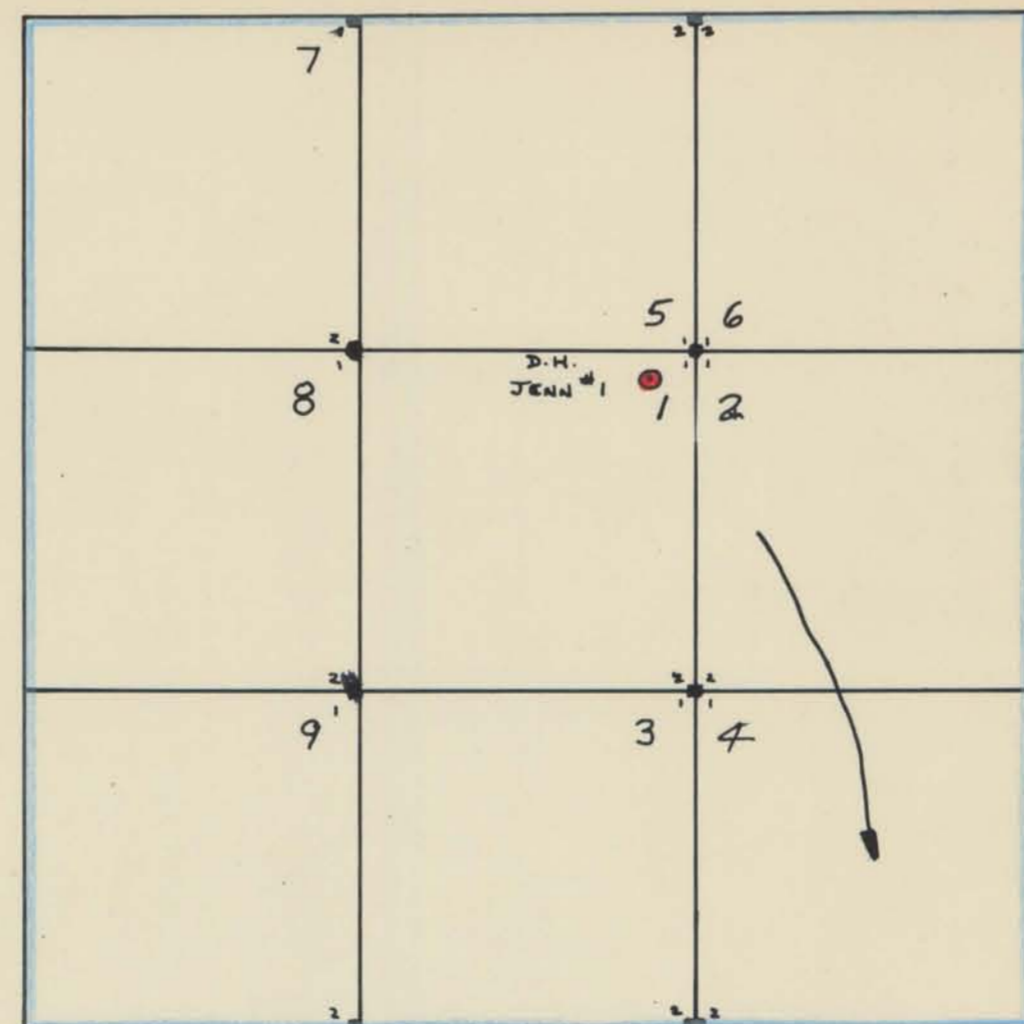
- Contours 2500 C.I.
- Stream or creek (Perennial, intermittent)
- Marsh
- Lake
- Road
- Jeep Road
- Trail
- Trees

1 inch to 800 feet.

IMPERIAL OIL LIMITED - MINERALS

Project No. 6053 Mining Division LIARD
 Latitude 58° 11' N. Longitude 128° 16' W.
 NTS 104 I/LW

To Accompany A Report By: R. Oddy + J. P. Madine
 Dated: Sept. 74
 Map No. 1

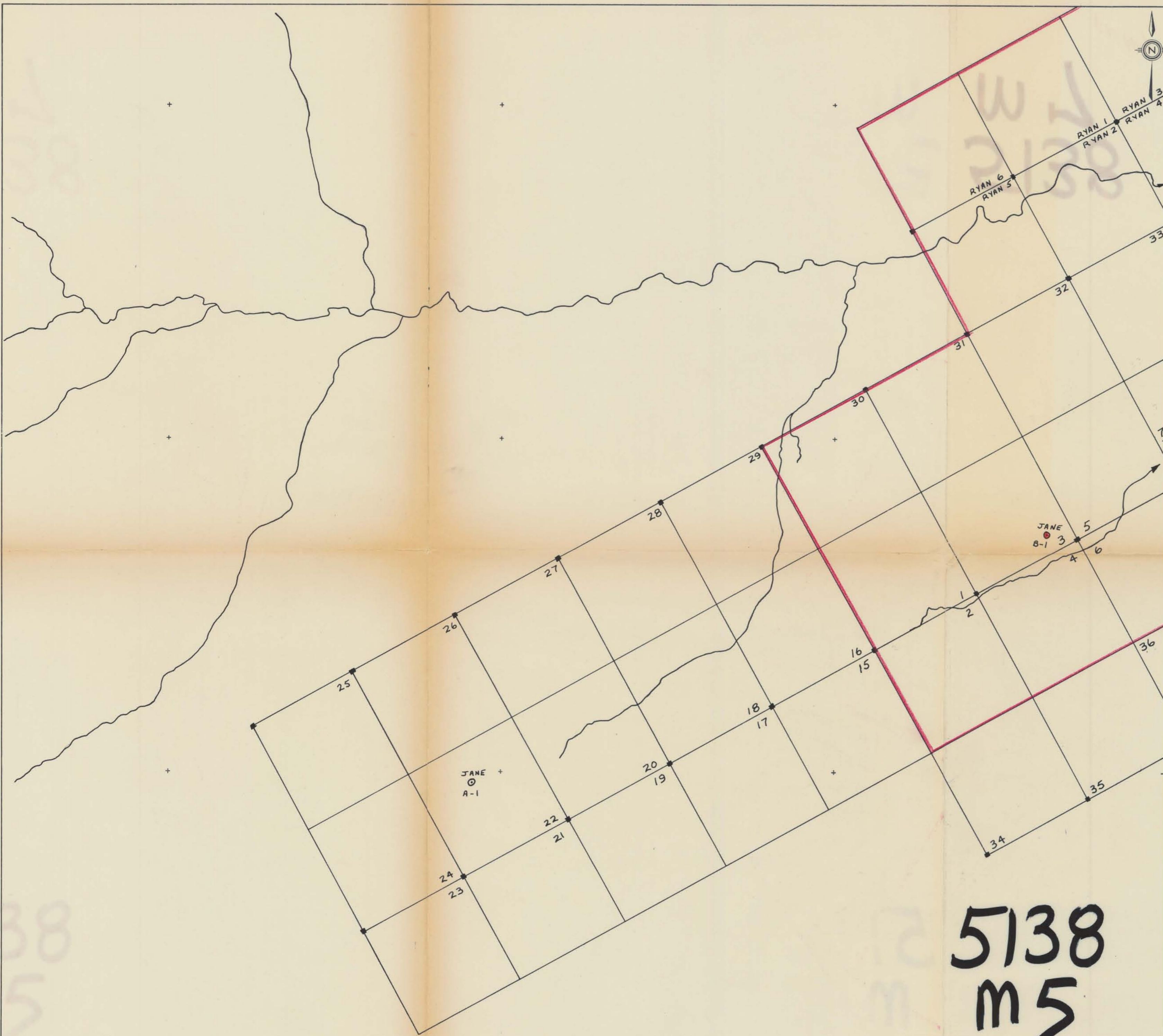


5138
 M 4

800 FT.

R. Oddy

5138
 M 4



LOCATION MAP
 JANE cl.s.
 GROUP No. V.

Department of
 Mines and Petroleum Resources
 ASSESSMENT REPORT
 No. **5138** MAP #5

- SYMBOLS**
- Drift-covered area : : : :
 - Rock outcrop, area of outcrop, float X (XXX) X
 - Geological boundary (defined, approximate interpreted) - - - -
 - Bedding, tops known (horizontal, inclined, vertical, overturned, dip unknown) + / \ / \ / \ / \ /
 - Bedding, tops unknown (inclined, vertical, dip unknown) / \ / \ / \ / \ /
 - Schistosity, gneissosity, cleavage, foliation (horizontal inclined, vertical, dip unknown) + / \ / \ / \ / \ /
 - Lineation, axes of minor folds (horizontal, inclined, vertical) / \ / \ / \ / \ /
 - Drag-fold (arrow indicates plunge) / \ / \ / \ / \ /
 - Fault (defined, approximate, interpreted) ~ ~ ~ ~
 - Fault (inclined, vertical) ~ ~ ~ ~
 - Fault (solid circle indicated downthrow side, arrows indicate relative movement) ~ ~ ~ ~
 - Thrust fault (approximate, interpreted) ~ ~ ~ ~
 - Shearing and dip / \ / \ / \ / \ /
 - Joint (horizontal, inclined, vertical, dip unknown) + / \ / \ / \ / \ /
 - Syncline (defined, approximate) ~ ~ ~ ~
 - Anticline (defined, approximate) ~ ~ ~ ~
 - Anticline and syncline (overturned) ~ ~ ~ ~
 - Intensity (weak, moderate, strong) / \ / \ / \ / \ /

- Trench ~ ~ ~ ~
- Adit or tunnel ~ ~ ~ ~
- Rock dump or tailings ~ ~ ~ ~
- Quarry or mine ~ ~ ~ ~
- Shaft, raise, winze ~ ~ ~ ~
- Diamond-drill hole ~ ~ ~ ~

- Contours ~ ~ ~ ~ 2500 ~ ~ ~ ~ C.I.
- Stream or creek (Perennial, intermittent) ~ ~ ~ ~
- Marsh ~ ~ ~ ~
- Lake ~ ~ ~ ~
- Road ~ ~ ~ ~
- Jeep Road ~ ~ ~ ~
- Trail ~ ~ ~ ~
- Trees ~ ~ ~ ~

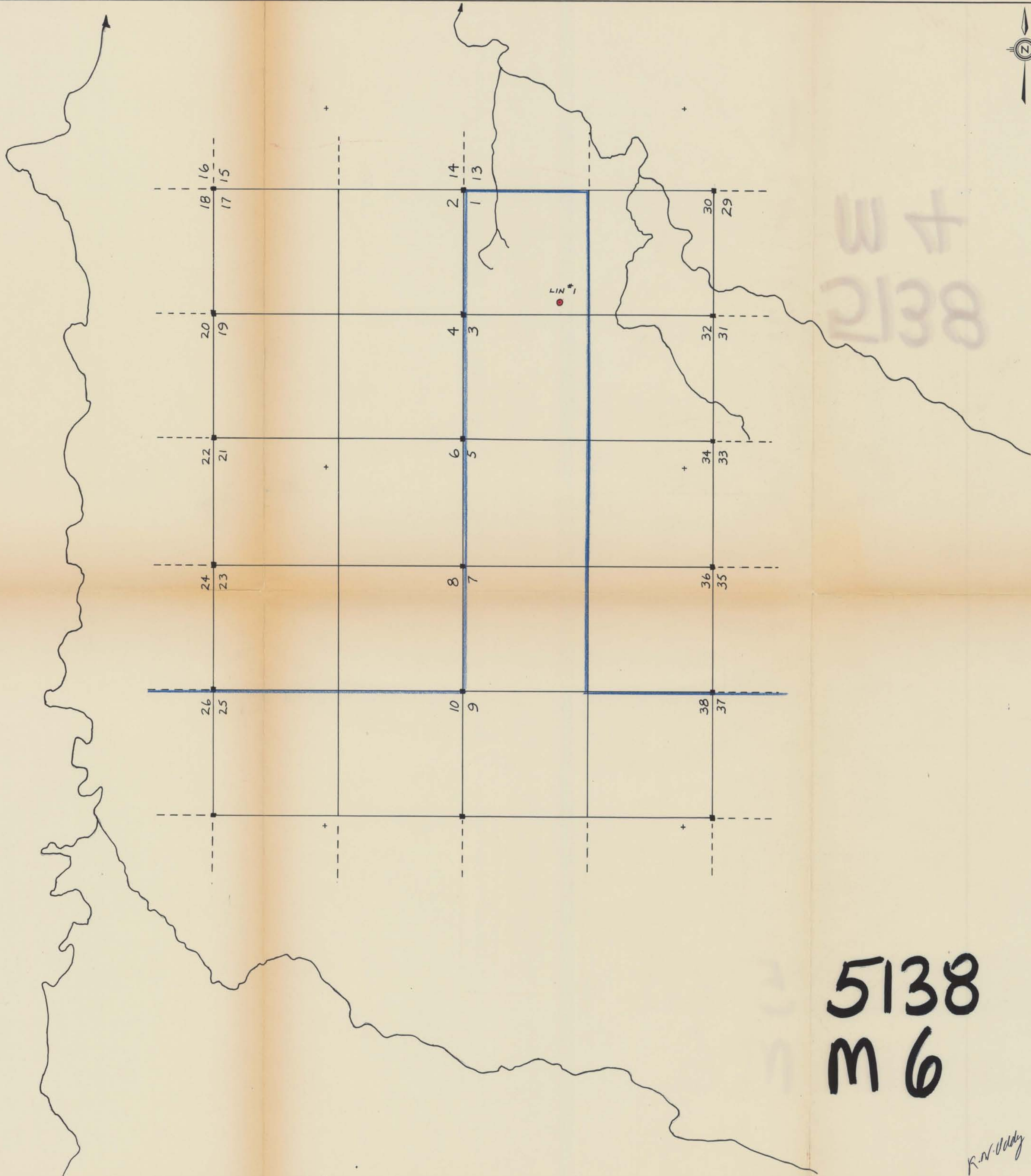
5138
M5

R. W. Oddy

1 in. = 800 ft.

IMPERIAL OIL LIMITED - MINERALS

Project No. _____ Mining Division LIARD
 Latitude 50° 09' Longitude 128° 20' W.
 NTS 104 I/1
 To Accompany A Report By: R. W. O. & J. P. N.
 Dated: Aug 27/74
 Map No. 2



LOCATION MAP
 LIN cl.
 GROUP NO. VI

Department of
 Mines and Petroleum Resources
 ASSESSMENT REPORT
 NO. 5138 MAP #6

- SYMBOLS**
- Drift-covered area
 - Rock outcrop, area of outcrop, float
 - Geological boundary (defined, approximate interpreted)
 - Bedding, tops known (horizontal, inclined, vertical, overturned, dip unknown)
 - Bedding, tops unknown (inclined, vertical, dip unknown)
 - Schistosity, gneissosity, cleavage, foliation (horizontal inclined, vertical, dip unknown)
 - Lineation, axes of minor folds (horizontal, inclined, vertical)
 - Drag-fold (arrow indicates plunge)
 - Fault (defined, approximate, interpreted)
 - Fault (inclined, vertical)
 - Fault (solid circle indicated downthrow side, arrows indicate relative movement)
 - Thrust fault (approximate, interpreted)
 - Shearing and dip
 - Joint (horizontal, inclined, vertical, dip unknown)
 - Syncline (defined, approximate)
 - Anticline (defined, approximate)
 - Anticline and syncline (overturned)
 - Intensity (weak, moderate, strong)
 - Trench
 - Adit or tunnel
 - Rock dump or tailings
 - Quarry or mine
 - Shaft, raise, winze
 - Diamond-drill hole

- Contours 2500 C.I.
- Stream or creek (Perennial, intermittent)
- Marsh
- Lake
- Road
- Jeep Road
- Trail
- Trees

1 in. = 800 ft.

IMPERIAL OIL LIMITED - MINERALS

Project No. _____ Mining Division LIARD
 Latitude 58° 14' N Longitude 128° 28' W.
 NTS 104 I/1W
 To Accompany A Report By: R.W.O. & J.P.N.
 Dated: Aug 27/74
 Map No. 3

5138
 M 6

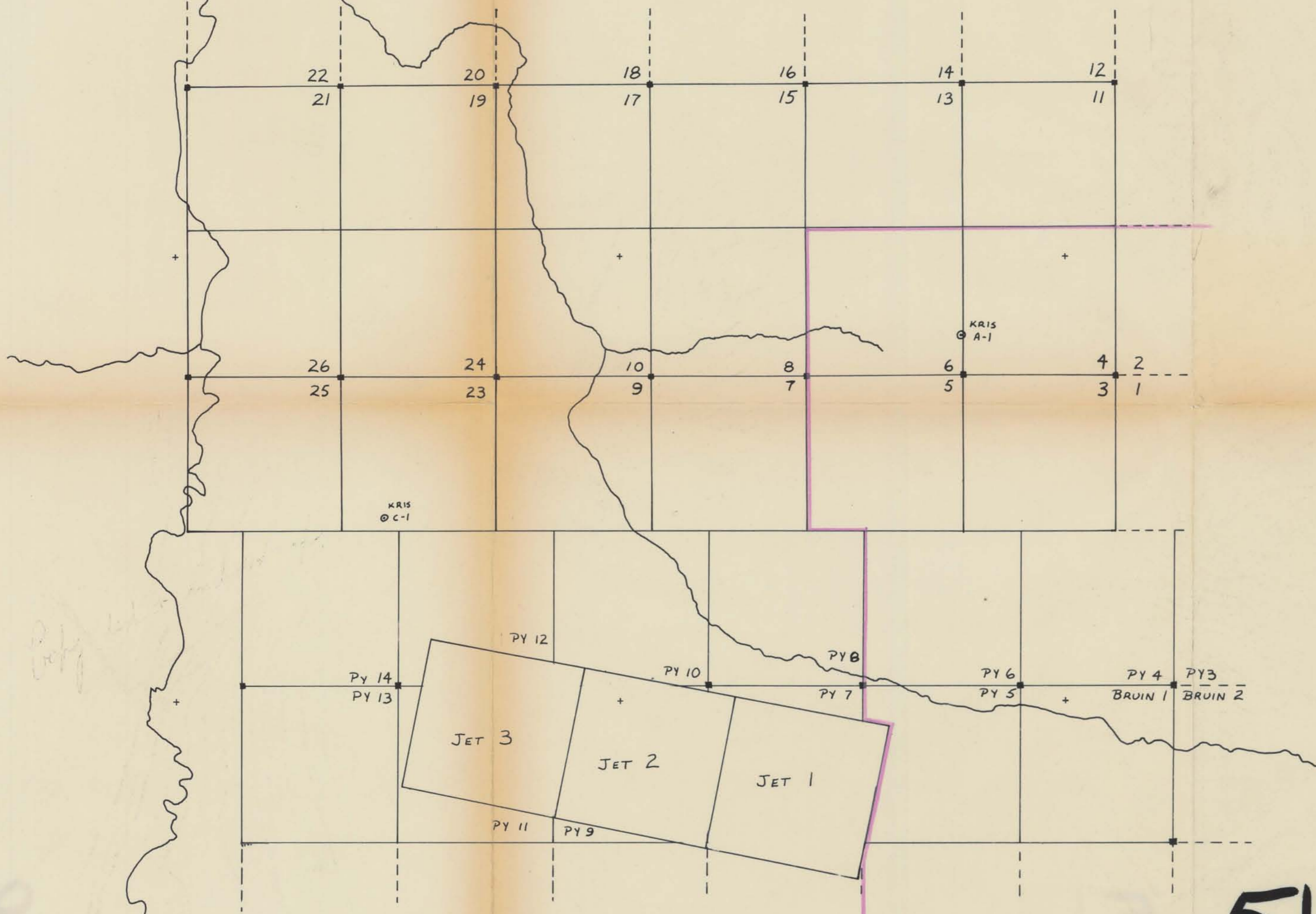
R.W. Oddy

WP
2138



LOCATION MAP
KRIS cls.
GROUP NO. VII

Department of
Mines and Petroleum Resources
ASSESSMENT REPORT
NO. 5138 MAP #7



- SYMBOLS**
- Drift-covered area
 - Rock outcrop, area of outcrop, float
 - Geological boundary (defined, approximate interpreted)
 - Bedding, tops known (horizontal, inclined, vertical, overturned, dip unknown)
 - Bedding, tops unknown (inclined, vertical, dip unknown)
 - Schistosity, gneissosity, cleavage, foliation (horizontal inclined, vertical, dip unknown)
 - Lination, axes of minor folds (horizontal, inclined, vertical)
 - Drag-fold (arrow indicates plunge)
 - Fault (defined, approximate, interpreted)
 - Fault (inclined, vertical)
 - Fault (solid circle indicated downthrow side, arrows indicate relative movement)
 - Thrust fault (approximate, interpreted)
 - Shearing and dip
 - Joint (horizontal, inclined, vertical, dip unknown)
 - Syncline (defined, approximate)
 - Anticline (defined, approximate)
 - Anticline and syncline (overturned)
 - Intensity (weak, moderate, strong)

- Trench
 - Adit or tunnel
 - Rock dump or tailings
 - Quarry or mine
 - Shaft, raise, winze
 - Diamond-drill hole
- Contours 2500 C.I.
 Stream or creek (Perennial, intermittent)
- Marsh
 - Lake
 - Road
 - Jeep Road
 - Trail
 - Trees

1 in. = 800 ft.

IMPERIAL OIL LIMITED - MINERALS

5138
m 7

R.N. Dady

Project No. 6053 Mining Division LIARD
 Latitude 58° 12' N Longitude 128° 28' W
 NTS 104 I/1
 To Accompany A Report By: R.W.O. & J.P.N.
 Dated: Aug 27/74
 Map No. 4