

I A R

Kitcho Creek

R

A

Z

Rainbow Lakes

Wolverine Lake

Gray Lake

Hottah Lake

E S

S

River



KRIS JET + PY
CLAIMS
GROUP EX

CRY LAKE - 104 I/I

5747

S P A T S I Z I P L A T E A U

1,250,000

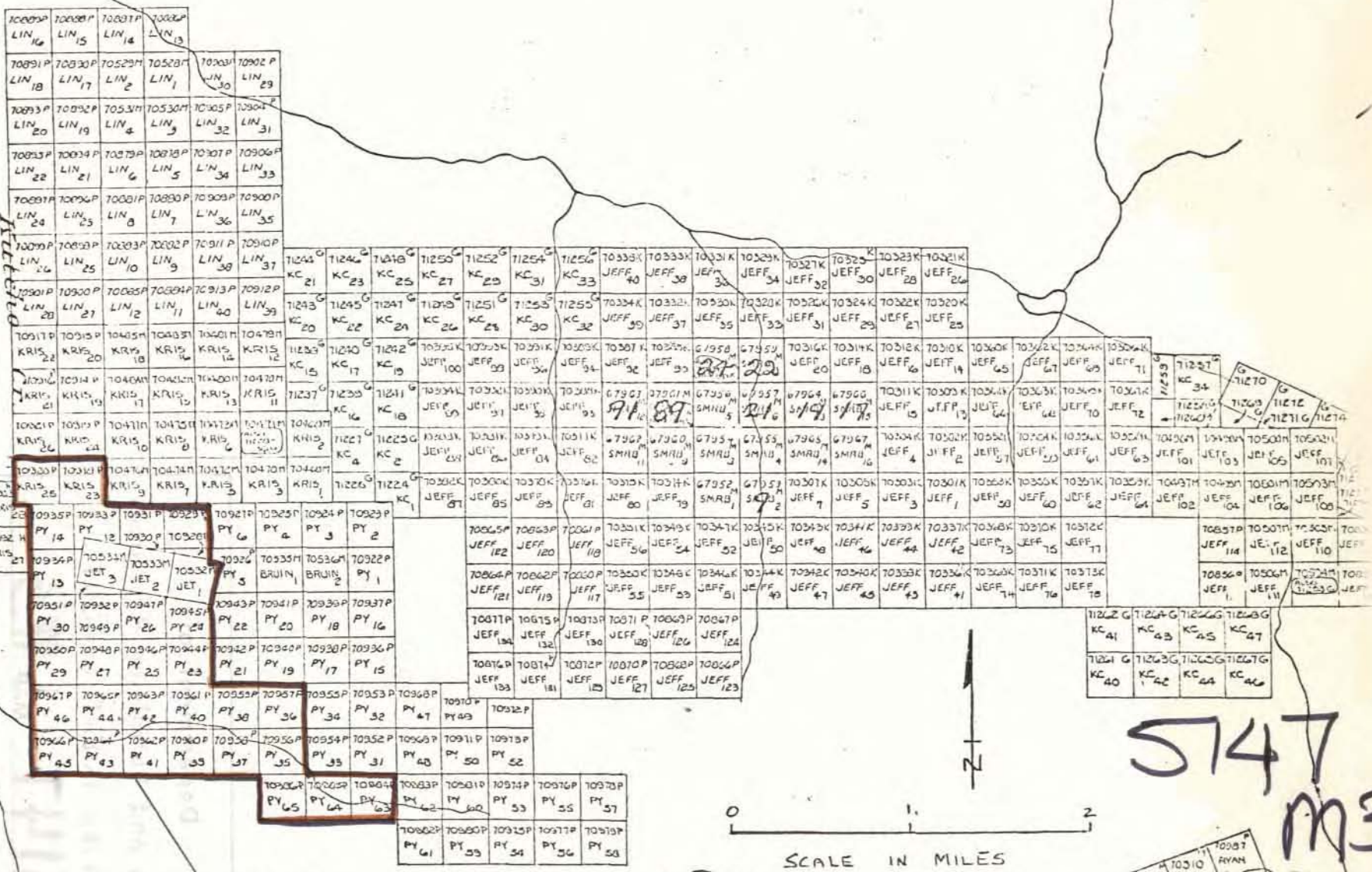
m2

125° 30'

58° 15'

54575	54576	54577	54578
CHAMBERLAIN	CHAMBERLAIN	CHAMBERLAIN	CHAMBERLAIN

6



5

5747
M3

1437H	1435H	1433H	1431H
BOW 20	BOW 18	BOW 16	BOW 14
1436H	1434H	1432H	1430H
BOW 19	BOW 17	BOW 15	BOW 13
1427H	1425H	1423H	1421H
1419H			

10997	RYAN 3
10990	RYAN 1
10996	RYAN 2
10993	RYAN 4
10998	RYAN 5
10995	RYAN 6
10994	RYAN 7
10992	RYAN 8
10991	RYAN 9
10999	RYAN 10
10998	RYAN 11
10997	RYAN 12
10996	RYAN 13
10995	RYAN 14
10994	RYAN 15
10993	RYAN 16
10992	RYAN 17
10991	RYAN 18
10990	RYAN 19
10989	RYAN 20

DIAMOND DRILL CORE LOG

DRILL HOLE NO. Kris C-1 LOCATION: Kris #23 claim
AZIMUTH: 180° CORE SIZE: BQ
INCLINATION: -50° CORE STORAGE: Property

DESCRIPTION

FROM	TO	DESCRIPTION
0	7	Overburden and casing.
7	199	Calcite-Chlorite-Sericite-Quartz Schist: pale green, aphanitic; foliated at 55-70° c/a; occasional argillaceous bands; minor pyrrhotite in seams.
199	206.5	Cherty Argillite: aphanitic, dark grey to black; foliated at 60° c/a.
206.5	211	Argillaceous Chert Augen Schist; grey-green to black; chert augens to 1" common; argillaceous matrix; trace pyrite and pyrrhotite.
211	231	Cherty Argillite: like 199' - 206.5'.
231	266.5	Argillaceous Chert-Quartz Augen Schist: like 206.5' - 211', except some chert augens are replaced by quartz eyes.
266.5	271	Cherty Argillite: like 199' - 206.5'.
271	275	Quartz-Chlorite Augen Schist: fine-grained, pale green to grey; fine augens of quartz in a chloritic matrix; fractured 70 - 90° c/a..
275	286	Cherty Argillite: like 199' - 206.5'.
286	299	Quartz-Chlorite-Chert Augen Schist: similar to 271' - 275' but with less regular chert augens.
299	307	Cherty Argillite: like 199' - 206.5'.
	307	END OF HOLE.

J. Peter Neilans

STATEMENT OF QUALIFICATIONS

I, J. Peter Neilans, of Vancouver, British Columbia, hereby certify the following qualifications:

(a) I obtained a B.A.Sc. degree in Geological Engineering (1973) from the University of British Columbia, Vancouver, B.C.

(b) I have been practising my profession as a geological engineer in Canada for the last year.

J. Peter Neilans
J. Peter Neilans

ARCTIC DIAMOND DRILLING LTD.

P.O. Box 3204, 18^{1/2} Industrial Road
Whitehorse, Yukon Territory Y1A 2V1

Marwell Area - Phone 668-2440 667-5434

730 - 510 W. Hastings Street,
Vancouver, B.C.

Phone 688-3328

August 8, 1974

INVOICE #1621

IN ACCOUNT WITH:

Imperial Oil Limited,
1281 West Georgia Street,
Vancouver 5, B.C.

APPROVED

W. Samuel

6053

Services - Diamond Drilling

Drilling charges August 1 - 8, 1974 (Rainbow Lake Project)

Hole: Kris-C-1 x 50° x BQ

<u>Moving</u>			
6 man hours @ \$8.00 per hour =	\$ 48.00		
3 machine hours @ \$7.00 per hour =	<u>21.00</u>	\$	69.00
<u>Testing</u>			
2 tests @ \$23.00 per test =		\$	46.00
<u>Overburden</u>			
0 - 5 = 5 feet @ \$8.40 per foot =		\$	50.40
<u>Coring</u>			
6 - 307 = 301 feet @ \$8.40 per foot =			\$2,528.40
<u>Remaining Casing</u>			
6 - 7 = 1 foot @ \$7.00 per foot =		<u>\$</u>	<u>7.00</u>
			<u>\$2,700.80</u>

Hole: Lin-1 x 50° x BQ

<u>Moving</u>			
45 man hours @ \$8.00 per hour =	\$360.00		
10.5 machine hours @ \$7.00 per hour =	<u>73.50</u>	\$	433.50
<u>Testing</u>			
2 tests @ \$23.00 per test =		\$	46.00
<u>Overburden</u>			
0 - 15 = 15 feet @ \$8.40 per foot =		\$	126.00
<u>Coring</u>			
15 - 207 = 192 feet @ \$8.40 per foot =		<u>\$1,612.80</u>	\$2,218.30
<u>Moving Out (to Dease Lake)</u>			
180 man hours @ \$8.00 per hour =			\$1,440.00
<u>Demobilization Charge</u>			
(Re: article 14 of Contract) 1/2 x 1900.00 =		<u>\$</u>	<u>950.00</u>

TOTAL INVOICE

\$7,309.10

(Total Contract - 4,891 feet)

Mailed to Calgary Aug 19

COST STATEMENT - GROUP IX.

A. CAMP COST CALCULATION (for entire drilling project)

Equipment (tents, lumber, radios, etc.)	\$ 6,268.10
Fuel (stove oil, propane, gas, etc.)	1,362.37
Food	3,489.14
Air Support (includes mobilization costs)	11,298.55
Fixed Wing	\$ 3,360.21
Helicopter	7,938.34
	<hr/>
TOTAL:	\$ 22,418.16
	<hr/> <hr/>

\$ 22,418.16 ÷ 348 man-days = \$64.42/man-day
- camp costs were calculated at \$64.42/man-day

B. SALARY CALCULATION (Supervisory & Cook)

HOLE	DATES	PERSONNEL*	RATE	TOTAL
Kris C-1	31/7-2/8	P. Neilans (G)	2 d x \$35/d	\$ 220.00
		R. Wittebolle (A)	2 d x \$21/d	
		D. Lindwall (C)	3 d x \$36/d	

* (G) Geologist, (A) Assistant, (C) Cook

DRILL COST SUMMARY

GROUP NO. IX

HOLE NO.	DIRECT DRILL.	MOB/DEMOB	FUEL	HELICOPTER	CAMP	SALARIES SUPERVISORY/COOK	TOTAL	COST/FOOT
Kris C-1	\$ 2,700.80	\$ 811.53	\$ 301.48	\$ 2,112.00	\$ 1,223.98	\$ 220.00	\$ 7,369.79	\$ 24.01

SUMMARY OF DRILLING - GROUP NO. IX.

LE NO.	GRID LOCATION	DATES	CONTRACTOR	DRILL TYPE	AZIMUTH	ANGLE	TOTAL LENGTH	HORIZ. PROJ.	VERT. PROJ.	TOTAL COST	COST/FOOT
Kris C-1	L00; 1+25N	31/7-2/8	Arctic Diamond Drilling Ltd.	BBS-1	180°	-50°	307'	197'	235'	\$ 7,369.79	\$ 24.01

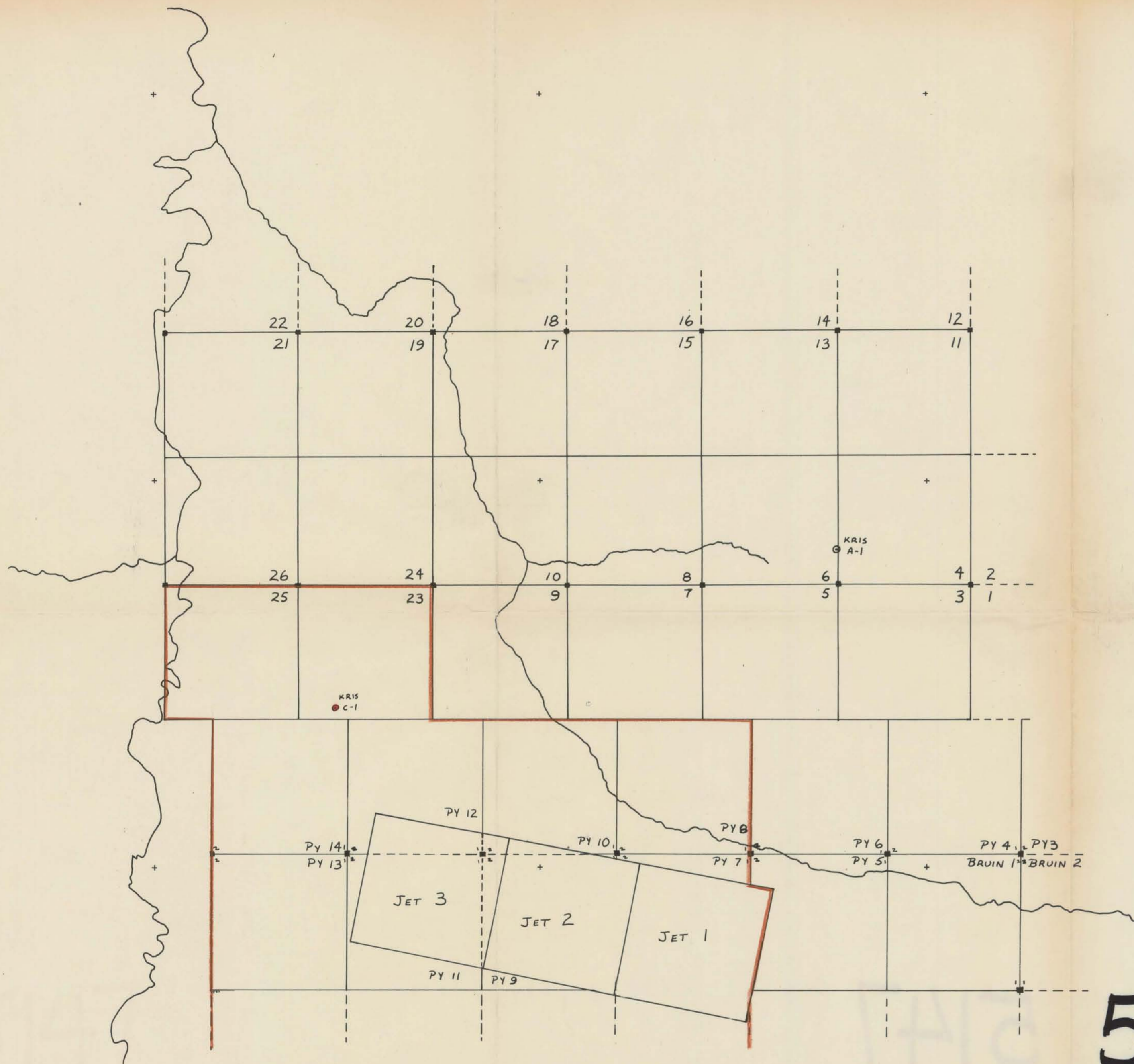


LOCATION MAP

KRIS cls.

GROUP NO. LX

Department of
Mines and Petroleum Resources
ASSESSMENT REPORT
NO. 5147 MAP #1



SYMBOLS

- Drift-covered area
- Rock outcrop, area of outcrop, float
- Geological boundary (defined, approximate interpreted)
- Bedding, tops known (horizontal, inclined, vertical, overturned, dip unknown)
- Bedding, tops unknown (inclined, vertical, dip unknown)
- Schistosity, gneissosity, cleavage, foliation (horizontal inclined, vertical, dip unknown)
- Lination, axes of minor folds (horizontal, inclined, vertical)
- Drag-fold (arrow indicates plunge)
- Fault (defined, approximate, interpreted)
- Fault (inclined, vertical)
- Fault (solid circle indicated downthrow side, arrows indicate relative movement)
- Thrust fault (approximate, interpreted)
- Shearing and dip
- Joint (horizontal, inclined, vertical, dip unknown)
- Syncline (defined, approximate)
- Anticline (defined, approximate)
- Anticline and syncline (overturned)
- Intensity (weak, moderate, strong)
- Trench
- Adit or tunnel
- Rock dump or tailings
- Quarry or mine
- Shaft, raise, winze
- Diamond-drill hole

- Contours 2500 C.I.
- Stream or creek (Perennial, intermittent)
- Marsh
- Lake
- Road
- Jeep Road
- Trail
- Trees

1 in. = 800 ft.

IMPERIAL OIL LIMITED - MINERALS

5147
M1

R. Duddy

Project No. 6053 Mining Division LIARD
 Latitude 58° 12' N Longitude 128° 28' W
 NTS 104 I/1
 To Accompany A Report By: R.W.O. & J.P.N.
 Dated: Sep. 174
 Map No. 1