

5185

92I/2W

REPORT TO
ACAPLOMO MINING AND DEVELOPMENT CO. LTD.

CONCERNING DIAMOND DRILLING

ON ITS

ACA NO. 1 GROUP

OF MAKELSTIN CLAIMS

NEAR MERRITT, B. C.

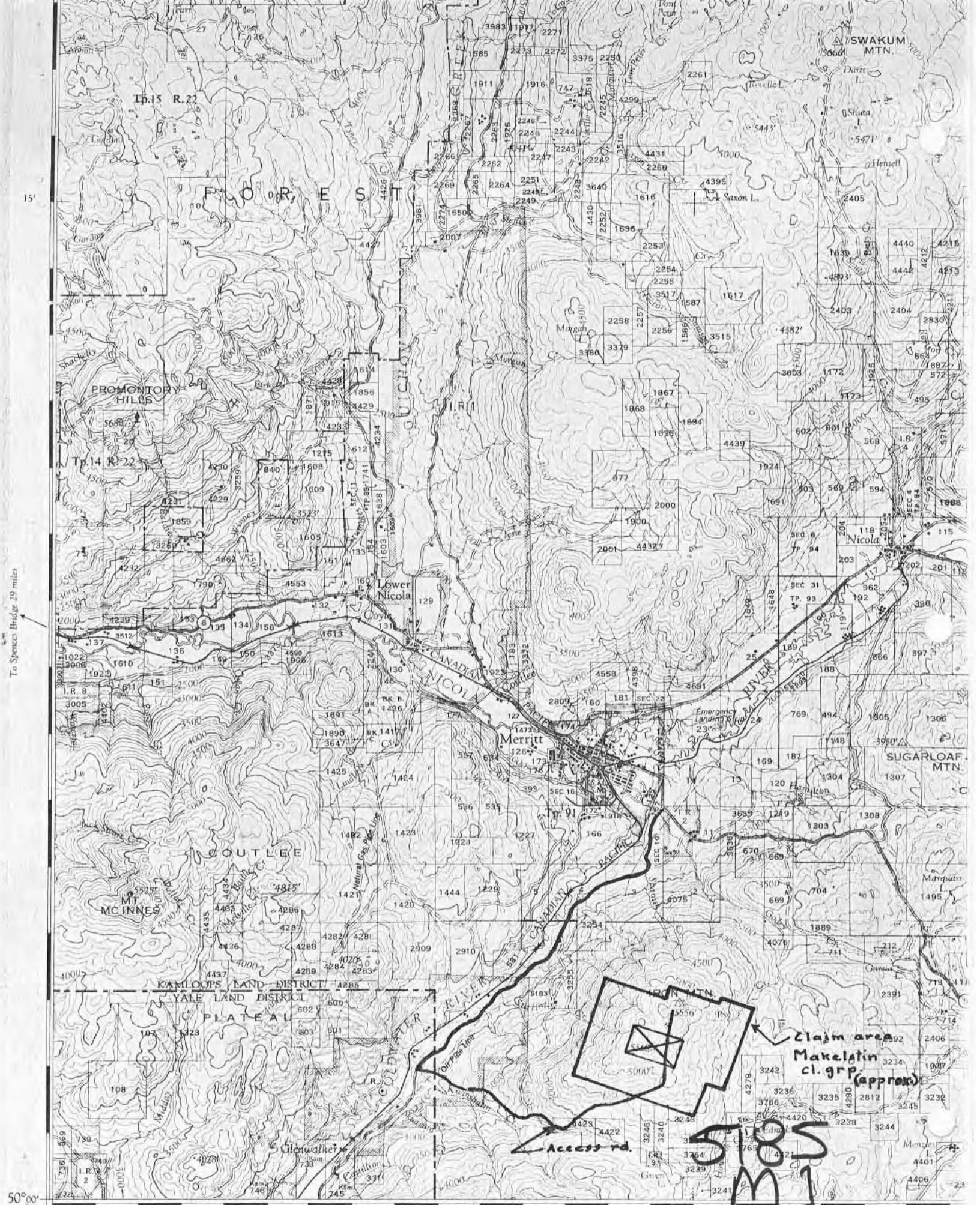
BY

SHERWIN F. KELLY, P. ENG.
GEOLOGIST AND GEOPHYSICIST

OCTOBER 15, 1974

Department of Mines and Petroleum Resources ASSESSMENT REPORT NO. 5185 MAP.....
--





15'

To Spence Bridge 29 miles

50°00'

121°00'

Merritt, B.C. Sheet 92 1/2 SE. Scale: 1 in. = 2 miles.

45' Fig. 1

Claim area
Makelatin
cl. grp.
(approx)

50072

Access rd.

5085

REPORT TO
ACAPLOMO MINING AND DEVELOPMENT CO. LTD.
ON DIAMOND DRILLING ON ITS
MAKELSTIN CLAIMS, NEAR MERRITT, B. C.
BY
SHERWIN F. KELLY, P. ENG.

INTRODUCTION

A short, diamond drilling program was conducted in July, 1974, on mineral claim Makelstin #22A, located on the top of Iron Mtn., just south-east of Merritt, B. C. The work was carried out on a contract basis by Mac's Enterprises Ltd. and the covering Affidavit on Application to Record Work was filed in the office of the Mining Recorder for the Nicola Mining Division, in Merritt, B. C., on July 24, 1974. This present report is submitted in support of the application, which specified that the work was to apply on mineral claims Makelstin nos. 1, 2 and 3.

LOCATION AND ACCESS

The Makelstin group of mineral claims belonging to Acaplomo Mining and Development Co. Ltd., is located on the top of Iron Mountain, on the southeast outskirts of Merritt, B. C., in the Nicola Mining Division. It is accessible from Merritt via the Coldwater Road and branching off that road to the east, a graded gravel road built to service the micro-wave towers on Iron Mtn. These towers are on the north edge of the Acaplomo property and the road to them traverses the length of the claim block. See the accompanying index map, Fig. 1.

The area is contained in the S.W. quadrant of the Merritt sheet, NTS Map 92 I/SE. The co-ordinates are approximately $120^{\circ} 46'$ W longitude and $50^{\circ} 2\frac{1}{2}'$ N latitude.

DIAMOND DRILLING

The drilling was carried out by W. A. McClelland, assisted by Arlin McClelland, of Mac's Enterprises Ltd., Merritt, B. C. An X-ray machine employing EX bits and rods, was utilized. The core diameter is 7/8 in.

The hole was spotted at station 500 E on line 2700 N of the geophysical-geochemical grid. The access road to the micro-wave towers crosses this line at 400 E, so the drill was sited 100 ft. east of the road. The drill collar is 500 ft. east and 300 ft. south of the northwest corner of claim Makelstin No. 22A, marked by the final location post for claims Makelstin 21A and 22A. The elevation is circa 5,400 ft. The drill set-up near a bull-dozed track leading to an area about 500 ft. further east, where showings of copper in a rhyolite breccia had previously been investigated by bull-dozing and drilling. The present hole was spotted to test the formations westerly from those showings. It was drilled east (magnetic) along the grid line, at -46° , to a depth of 50 ft.

RESULTS

Throughout its 50 ft. length, the core revealed the same formation. It is a nearly white, volcanic agglomerate with a rhyolitic ground mass through which are sprinkled small, irregular to rounded fragments of predominantly gray and red, fine grained rocks, probably andesites. Some fractures were encountered. There was no mineralization except that at the end of the core there was a little, minor quartz veining with a few specks of chalcopyrite. Further drilling in the area would be advisable, to test some nearby geochemical anomalies.

The core is stored in a shed at the home of W. A. McClelland, 1201 Quilchena Avenue.

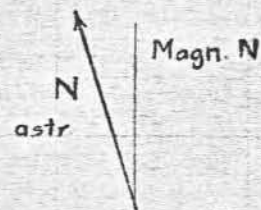
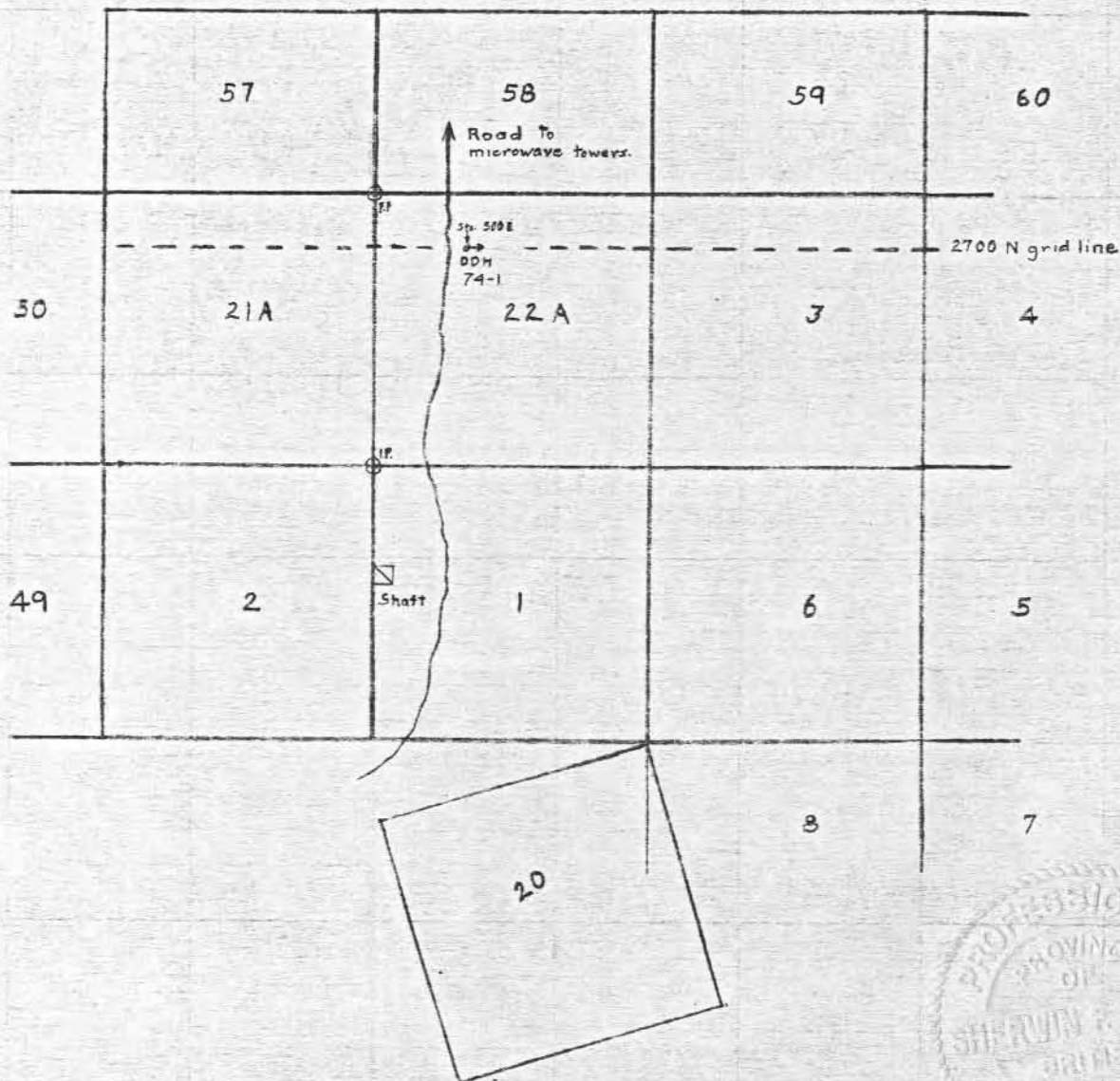
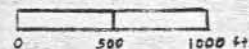


Fig. 2

Location Map

Portion of Makelstin claims
to show location of diamond
drill hole
74-1

Scale



1 in. = 1000 ft.

Numbers are Makelstin
claim numbers.

5185

Acaplamo Mining and
Development Co. Ltd.
Merritt, B.C.

M2



Sherwin F. Kelly, P. Eng.
Oct 15, 1974

EXPENDITURES

The drilling of this hole was contracted for by Mac's Enterprises Ltd., of Merritt, at \$10.00 per foot. Fifty feet were drilled. I undertook the logging of the core and preparation of this report for a professional fee of \$200.00. Expenditures therefor were:

Fifty feet of EX drilling @ \$10.00 per ft.-----	\$500.00
Preparation of this report-----	<u>\$200.00</u>
	\$700.00

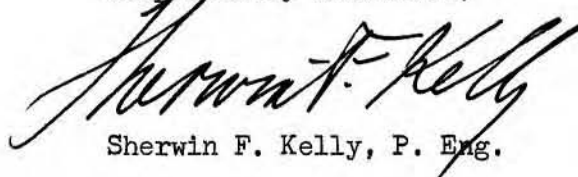
The hole was drilled on claim Makelstin 22A, record no. 36733. The work is to be applied, however, to Makelstin #1, #2 and #3, record nos. 22820/21 (November) and 31682 (July). Makelstin #1 - #3 and #22A are all in group Aca No. 1. The sum of \$600.00 is to be applied for one year's work to each of the three claims mentioned. The remaining balance of \$100.00 may be claimed at a later date.

I hereby certify that the expenditures listed were duly and properly incurred for the work specified.

The log of the core is bound in back of this report.

I am a member of the Association of Professional Engineers of British Columbia.

Respectfully submitted,



Sherwin F. Kelly, P. Eng.

Box 277
Merritt, B. C.
October 15, 1974

DIAMOND DRILL RECORD

COLLAR

~~NORTH~~ 500 ft. E. and 300 Ft. S
 NESE of NW corner, Makelstin #22A
 ELEVATION ...circa 5,400 ft.
 AZIMUTH East (magnetic) ...
 DIPS -46°

COMPANY Acapulco Mining and Development Co. Ltd.

PROPERTY Makelstin Claims

LOCATION Top of Iron Mtn., near Merritt, B. C.

HOLE 74 - 1

STARTED July 19, 1974

FINISHED July 21, 1974

DEPTH 50 ft.

PURPOSE Formation testing

LOGGED BY Sherwin F. Kelly, P. Eng.

% Core Recovery	From	To	Description	Samples				Assays			Averages	
				Sample No.	From	To	Width	Au	Ag	Cu		
			Box 1, 0 to 35 ft.									
80%	0	35	Rhyolite, Volcanic agglomerate with rhyolitic ground mass containing small, irregular to rounded fragments of dark gray and red rocks (some lighter in color) probably andesitic. A few appear themselves agglomeritic and some may be porphyritic. Fracture zones and lost core at 2 ft. and 3 ft. and mud seam, no core, 16½ to 19 ft.									
			Box 2, 35 to 50 ft.									
8%	35	50	Same formation. Fracture zones and lost core, 37 ft. and 42 ft. Couple of small quartz veinings at 50 ft. with few specks of chalcopyrite. End of core.									

Sherwin F. Kelly, P. Eng.