

5217

DRILLING REPORT

82G/12W

Submitted to British Columbia Government
To Support
Application for Credit on KIM GROUP "A" CLAIMS

This is a group of 40 claims in the Fort Steele Mining
Division.

This report contains the following:

- a) An itemized cost statement.
- b) Copies of drill core logs, and statement of qualifications.
- c) A Surface Plan and an Index Map.
- d) Azimuth, inclination of hole, core diameter, etc. is shown on the headings of the Diamond Drill Logs.
- e) Core stored and available for inspection at the Imperial Oil Limited warehouse at 339 - 50th Avenue S.E., Calgary, Alberta.

We also enclose a copy of our "Affidavit on Application for Certificate of Work" which was submitted to Mr. Draper, the Mining Recorder in Cranbrook, British Columbia on September 27, 1974.

At that time we also filed a "Notice to Group" for these claims and paid the \$10,00 annual rental on each claim. A copy of the submittal is also attached. We have submitted costs in excess of the \$8,000.00 required to hold the claims for one year.

J. N. Cryderman
J. N. Cryderman

JNC/gf
09/30/74

Department of	
Mines and Petroleum Resources	
ASSESSMENT REPORT	
NO. 5217	MAP.....

COST STATEMENT

Wescore Drilling Ltd.	\$ 9,725.15
E. J. Frost	<u>613.50</u>
	<u>\$ 10,338.65</u>

The holes were drilled by Wescore Drilling Ltd.

Mr. E.J. Frost is a local prospector, handyman, etc. who was retained to spot the holes, collect core and supervise the program.

MAPS

- #1 Location map
- #2 Diamond Drilling

This will attest that I described the core for the accompanying logs on Hole K-13 and K-12 on the Imperial Oil Limited KIM Claims.

I obtained a Bachelors Degree in Geology from the University of Saskatchewan, in Saskatoon, in 1952.

I have been employed as a geologist since 1953 by Imperial Oil Limited.



J. N. Cryderman

The core from Hole K-13 will be retained at the Imperial Oil Limited warehouse at 339 - 50th Avenue S.E., Calgary, Alberta.

3969

IMPERIAL OIL ENTERPRISES

DIAMOND DRILL LOG

HOLE NO. K-13
 LOCATION KIM CLAIM NO. 166
 CORE SIZE BQ
 PURPOSE EXPLORATION
 STARTED SEPTEMBER 21, 1974
 COMPLETED SEPTEMBER 26, 1974
 DRILLED BY WESCORE DRILLING LTD.
 LOGGED BY J.N. CRYDERMAN

PROPERTY
KIM CLAIM GROUP - KIMBERLEY, B.C.

LATITUDE 49° 39' 26"
 DEPARTURE 115° 51' 36"
 ELEVATION 3,250 +
 AZIMUTH 300°
 DIP 55°
 LENGTH 556'
 HORIZ. PROJ. 455'
 VERT. PROJ. 320'

DIP TESTS

TEST	FROM	TO	TOTAL	DIP	CORR.

FOOTAGE		DESCRIPTION	CORE SAMPLES							
FROM	TO		NUMBER	FROM	TO	WIDTH				
0	12	Overburden, surface till and gravel.								
12	20	Argillite, grey banded, several fracture systems sealed with quartz, traces pyrite, some brown iron stain in fractures.								
20	27	Quartzite, mottled grey and grey brown, brecciated and sealed with quartz, some bands silty.								
27	40	Quartzite, grey, argillaceous, slightly silty.								
40	49	Quartzite, brown, homogeneous with pyrite, nodules and grains. Some coarse (3-4") inclusions of light grey quartzite.								
49	53	Quartzite, light grey, homogeneous as above.								
53	63	Quartzite, brown to grey brown, quartz filled fracture system at 60°.								
63	78	Diorite, black, fine grained, some quartz veining at 39° and 60°.								
78	84	Quartzite, silty brown and grey-brown with random oriented quartz veins.								
84	189	Diorite, black-grey black with scattered quartz veins.								
189	207	Quartzite, grey and buff, interbanded, some near vertical fracturing, some silty bands.								
207	273	Diorite, becoming coarse grained at approximately 240-250'. Fault gouge at 252-254' with clay material. Some minor disseminated pyrite throughout.								
273	316	Quartzite, grey with some thick quartz stringers and blebs at 290-295'.								
316	556	Diorite to quartz-diorite, traces pyrite throughout. Numerous quartz veins throughout with no discernible vein pattern or attitude.								

J.N. Cryderman



PROVINCE OF BRITISH COLUMBIA

RECEIPT

No. 933645D

THE SUM OF Four Hundred ^{xx} DOLLARS (\$ 400.⁰⁰)

RECEIVED FROM Imperial Oil Enterprises September 27 1974

{ Annual Rental
40 claims @ 10.00. Kym Group A.

ON ACCOUNT OF:

Lorambrook, B.C.
ISSUING OFFICE

L. Sinclair
SIGNING OFFICER

BRITISH COLUMBIA MINING RECEIPT

Mining Division Fort Steele

Issued at Lorambrook, B.C. No. 98257 E

Date September 27, 1974

RECEIVED from Imperial Oil Enterprises

the sum of Forty ^{xx} Dollars,

in payment of Notice to Group - Kym 175, 174, 173,

172, 171, 169, 167, 75, 73, 71, 72, 74, 76, 166, 168, 170,

189, 187, 185, 53, 51, 49, 50, 52, 54, 184, 186, 188, 190,

203, 201, 199, 31, 29, 30, 32, 198, 200, 202, 154

(Kym Group A)

Signature [Signature]

\$ 40.⁰⁰/_{xx}

Office Fort Steele

TO ACCOMPANY 'AFFIDAVIT ON APPLICATION FOR CERTIFICATE OF WORK'

KIM GROUP A
FORT STEELE MINING DIVISION

<u>NAME OF CLAIM</u>	<u>RECORD NO'S</u>
KIM 175	10141
174	10140
173	10139
172	10138
171	10137
169	10135
167	10133
KIM 75	10041
73	10039
71	10037
72	10038
74	10040
76	10042
KIM 166	10132
168	10134
170	10136
189	10155
187	10153
185	10151
KIM 53	10019
51	10017
49	10015
50	10016
52	10018
54	10020
KIM 184	10150
186	10152
188	10154
190	10156
203	10169
201	10167
199	10165
KIM 31	9997
KIM 29	9995
30	9996
32	9998
198	10164
200	10166
202	10168
KIM 154	10120

MINERAL ACT

FORM I



NOTICE TO GROUP

Mining Division FORT STEELE Location CRANBROOKName of group KIM GROUP AWe, the undersigned owners* of the following adjoining mineral claims, desire to group them according to the provisions of the *Mineral Act*:—

NAME OF CLAIM	Record No. or Lot No.	SIGNATURE OF OWNER*	Free Miner's Certificate No.
KIM 175	10141		
174	10140	J. N. CRYDERMAN	125756
173	10139		
172	10138	agent for:	
171	10137		
169	10135	IMPERIAL OIL ENTERPRISES	125757
167	10133	LTD.	
KIM 75	10041		
73	10039		
71	10037		
72	10038		
74	10040		
76	10042		
KIM 166	10132		
168	10134		
170	10136		
189	10155		
187	10153		
185	10151		
KIM 53	10019		
51	10017		
49	10015		
50	10016		
52	10018		
54	10020		
KIM 184	10150		
186	10152		
188	10154		
190	10156		
203	10169		
201	10167		
199	10165		
KIM 31	9997		
KIM 29	9995		
30	9996		
32	9998		
198	10164		
200	10166		
202	10168		
KIM 154	10120		

* May be signed by agent on behalf of owner.



Department of
 Mines and Petroleum Resources
 ASSESSMENT REPORT
 NO. **5217** MAP #1

- Contours — 2500
 - Stream or creek (Perennial, intermittent)
 - Marsh
 - Lake
 - Road
 - Jeep Road
 - Trail
 - Trees
- 5 Miles

IMPERIAL OIL LIMITED — MINERALS

**KIM CLAIMS
 LOCATION MAP**

Project No. 6073
 Mining Division FORT STEELE
 Latitude 49°40'
 Longitude 115°55'
 NTS 82G-12
 To Accompany a Report By _____
 Dated _____
 Map No. _____

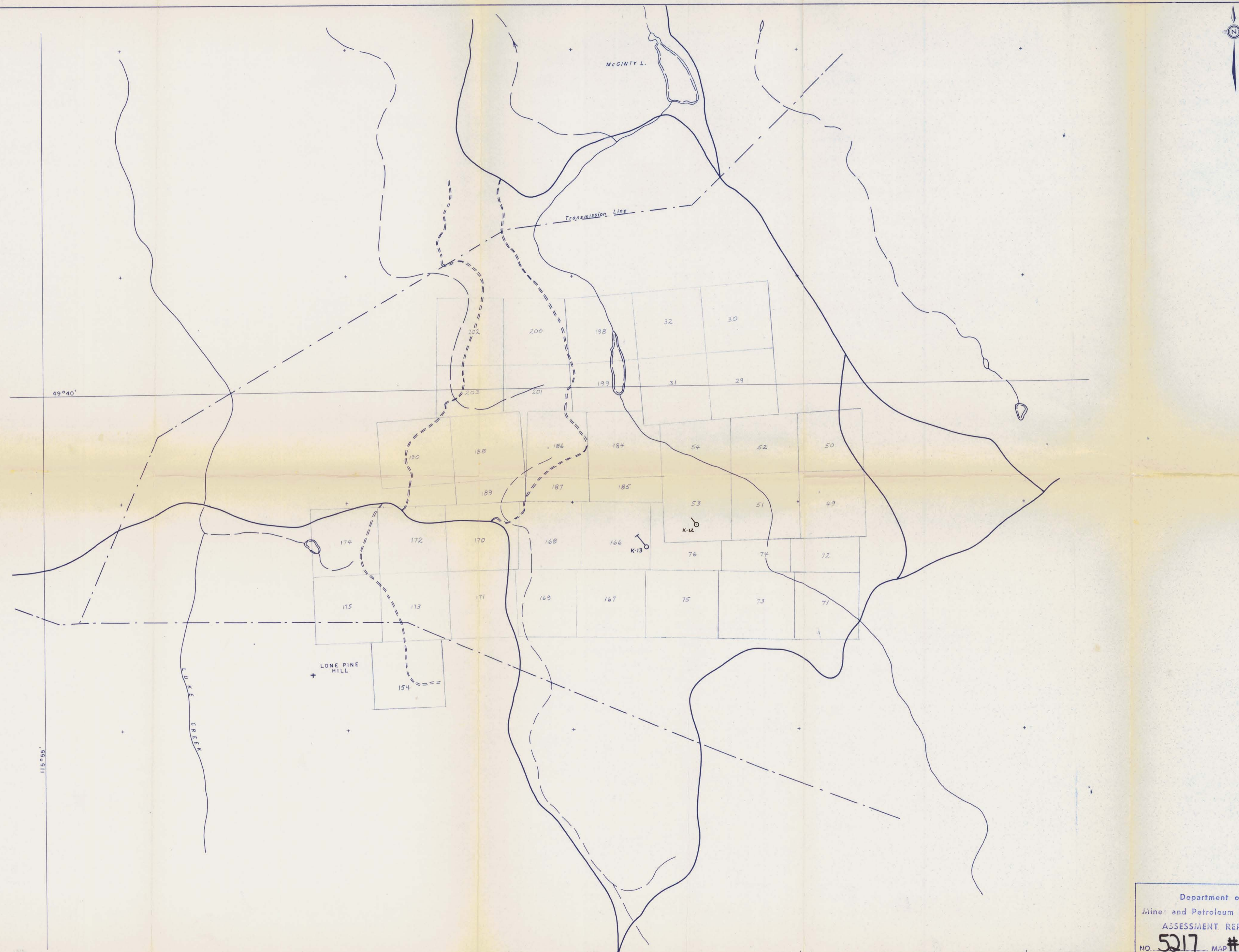
**5217
 MAP 1**

49°45'

49°30'

115°45'

115°15'



SYMBOLS

- Drift-covered area
- Rock outcrop, area of outcrop, float
- Geological boundary (defined, approximate interpreted)
- Bedding, tops known (horizontal, inclined, vertical, overturned, dip unknown)
- Bedding, tops unknown (inclined, vertical, dip unknown)
- Schistosity, gneissosity, cleavage, foliation (horizontal inclined, vertical, dip unknown)
- Lamination, axes of minor folds (horizontal, inclined, vertical)
- Drag-fold (arrow indicates plunge)
- Fault (defined, approximate, interpreted)
- Fault (inclined, vertical)
- Fault (solid circle indicated downthrow side, arrows indicate relative movement)
- Thrust fault (approximate, interpreted)
- Shearing and dip
- Joint (horizontal, inclined, vertical, dip unknown)
- Syncline (defined, approximate)
- Anticline (defined, approximate)
- Anticline and syncline (overturned)
- Intensity (weak, moderate, strong)
- Trench
- Audit or tunnel
- Rock dump or tailings
- Quarry or mine
- Shaft, raise, winze
- Diamond-drill hole
- Contours 2500 C.I.
- Stream or creek (Perennial, intermittent)
- Marsh
- Lake
- Road
- Jeep Road
- Trail
- Trees

IMPERIAL OIL LIMITED - MINERALS

KIM CLAIMS
DIAMOND DRILL LOCATION AND CLAIMS

Project No. 6073 Mining Division FORT STEELE

Latitude 49°40' Longitude 115°55'

NTS 82 G 12 0 1000' 2000'
Feet

Department of
Mines and Petroleum Resources

ASSESSMENT REPORT To Accompany A Report By: _____
Dated: _____

NO. 5217 MAP #2 Map No. _____

5217
M2