

5232

94F/13W

REPORT ON

DIAMOND DRILLING

GATAGA LAKES AREA

RED MINERAL CLAIMS

OF THE RED GROUP

57° 56' N, 125° 45' W.

AUGUST 18, 1974 - AUGUST 28, 1974

Vancouver, B. C.
October 21, 1974


J. H. Schussler

Department of
Mines and Petroleum Resources
ASSESSMENT REPORT

NO. **5232** MAP.....

C O N T E N T S

| | <u>Page</u> |
|---|-------------|
| INTRODUCTION | 1 |
| DIAMOND DRILLING PROGRAM | 1 |
| ASSESSMENT APPLICATION | 1 |
| AFFIDAVIT ON APPLICATION TO RECORD WORK | 2 |
| NOTICE TO GROUP | 3 |
| STATEMENT OF QUALIFICATIONS | 4 |

APPENDICES

APPENDIX A STATEMENT OF DIRECT DIAMOND
DRILLING COSTS

APPENDIX B DIAMOND DRILL HOLE LOGS

MAPS

| | |
|------------------------------------|-------------------|
| #1 REGIONAL LOCATION PLAN | Behind Appendix B |
| #2 LOCATION OF DIAMOND DRILL HOLES | Behind Appendix B |

INTRODUCTION

The Red claims straddle a southeast running creek, west of the middle one of the three Gataga Lakes. See Figure 1. The area is rugged mountainous terrane on the west side of the Rocky Mountains.

Access to the Gataga Lakes is by float plane, 185 miles southeast from Watson Lake, Yukon Territory or 95 miles northeast from Johanson Lake. This lake is at the north end of the B. C. Department of Mines Omineca Access Road from Fort. St. James. A helicopter is needed to get equipment from the lake to the working area 1 1/2 miles west.

DIAMOND DRILLING PROGRAM

The writer staked six mineral claims in the fall of 1973 to cover a gossanous area on the west bank of this small creek. Outcrops in the area are of limonite stained graphitic schist. Diamond drilling was undertaken during August 1974 in an attempt to discover the cause of the gossan. Two holes were drilled, but both had to be abandoned at relatively shallow depths in caving ground. The diamond drilling was performed by S & H Drilling Company Ltd. of Surrey, B.C., of which the writer is President. Equipment was mobilized out of Johanson Lake to the property where a small fly camp was erected for the duration of the job. Subsequent demobilization was out to Watson Lake in the Yukon. All core is now stored with Watson Lake Flying Services at their airport base in Watson Lake.

ASSESSMENT APPLICATION

As required by the Mineral Act of B.C., enclosed are: location plans, copies of diamond drill logs, and the financial statements itemizing the costs.

Vancouver, B. C.
October 21, 1974



J. H. Schussler

S&H DRILLING COMPANY LTD.

13135 - 20th Avenue
SURREY, B.C. V4A 1Z1
Phone 531-4134

October 21, 1974

The Mining Recorder
Liard Mining Division
VICTORIA, B.C.

Dear Sir:

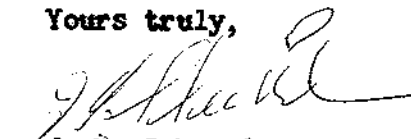
Re: Statements of Qualifications

This is to certify that I carried out the work covered under the attached report. I have been active in the mining industry for over 20 years having worked as a miner, prospector, diamond driller and eventually formed my own drilling company.

In my capacity as a prospector I staked these claims because from my knowledge of mineralization in the area, I felt there was potential here. Through facilities available through my firm I wanted to explore them with diamond drilling.

Mr. Gerald Harper is a graduate (B.Sc.) of University College of Rhodesia where he also studied for his Ph.D. degree under the affiliate sponsorship of the University of London. He has been working for Falconbridge Nickel Mines for the last five years doing considerable exploration work in northern B.C. I have worked with him on several occasions.

Yours truly,



J. H. Schussler

APPENDIX A

STATEMENT OF DIRECT DIAMOND DRILLING

COSTS

STATEMENT OF DIRECT COSTS INVOLVED IN DIAMOND DRILLING OPERATION ON
THE RED CLAIMS - GATAGA LAKES AREA (94 F), LIARD MINING DIVISION, B.C.

AUGUST 18, 1974 - AUGUST 28, 1974

MOBILIZATION

Mobilization from Johanson Lake to Gataga Lake,
August 18, 1974. Watson Lake Flying Service
Beach 18 on floats - Watson Lake to Johanson
Lake to Gataga Lake to Johanson Lake to Gataga
Lake to Johanson Lake to Gataga Lake to Watson
Lake.

\$ 1,258.40

Fuel supplied by S & H Drilling to Watson Lake
Flying Service at Johanson Lake - 8 drums Aviation
Gas

210.96

Labour during move in

200.00

\$ 1,669.36

DRILLING

Labour

\$ 1,150.00

Diamond Articles - 6 AQ Bits \$ 866.10
2 Casing Shoes 158.76
1 Reaming Shell 111.25

1,136.11

Fuel - 2 drums gas

64.50

8 Core Boxes

20.80

Food and Camp Supplies

253.00

Parts - 1 AQ outer tube core barrel \$ 40.85
12 Corelifter springs 42.84
2 Corelifter cases 28.04
2 Stabilizer rings 27.09
1 Locking coupling 57.44
46 ft. AW Casing - 2' lengths -
could not be recovered from
hole 483.00

679.26

3,303.67

DEMobilIZATION

Watson Lake Flying Service - 4 round trips to
Gataga Lake and return to Watson Lake

\$ 1,786.00

Labour

750.00

2,536.00

REPORT PREPARATION

Typing and preparation by Mrs. E. Schussler

50.00

Total

\$ 7,559.03

APPENDIX B

DIAMOND DRILL HOLE LOGS
Nos. 1 & 2

S&H

NORTH _____ STARTED 19.8.74
 EAST _____ COMPLETED 21.8.74
 ELEV. _____ LENGTH 101 ft.
 BEARING _____
 DIP Collar: - 90°

DRILLING COMPANY LTD.

PROPERTY
Red Claims

PURPOSE To test
gossanous zone
 LOGGED BY J. Schussler

HOLE No. 1
 CLAIM Red #1
 SECTION _____
 OFFSET _____
 PLOTTED _____

A Q Core

| FOOTAGE | DESCRIPTION | SAMPLE | FOOTAGE | C.L. | | | | |
|------------|---|--------|---------|------|--|--|--|--|
| 0 - 50' | <u>Overburden</u> - Casing. Very poor recovery of soil and weathered iron stained gossanous graphite schist. | | | | | | | |
| 50' - 101' | <u>Graphite Schist</u> Black, very fine grained, indurated graphitic schist. Very poor core recovery (abt. 30%) as pebbles. Schist cut by numerous quartz stringers up to 1½ inches wide from 70' - 90'. Stringers are 2' - 4' apart cutting core at 65° - 75°. From 90' - 97': 1½ ft. of core recovered of a red leached sponge-like hem rich gossan. Minor fine disseminated pyrite through the whole length of the hole. | | | | | | | |
| 101' | Hole caved preventing further drilling. | | | | | | | |
| | | | | | | | | |
| | | | | | | | | |
| | | | | | | | | |
| | | | | | | | | |

S&H

DRILLING COMPANY LTD.

NORTH _____ STARTED 22.8.74
 EAST _____ COMPLETED 24.8.74
 ELEV. _____ LENGTH 96 ft.
 BEARING 310° M.
 DIP Collar: ~ 55°

PROPERTY
Red Claims

PURPOSE To test
gossanous zone

HOLE No. _____
 CLAIM Red #1
 SECTION _____
 OFFSET _____
 PLOTTED _____

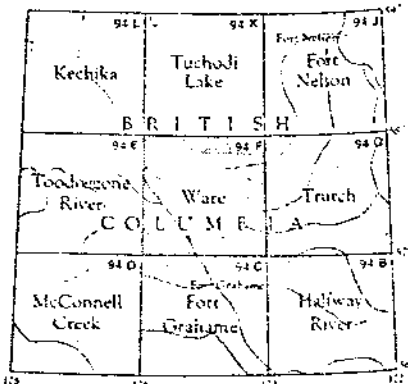
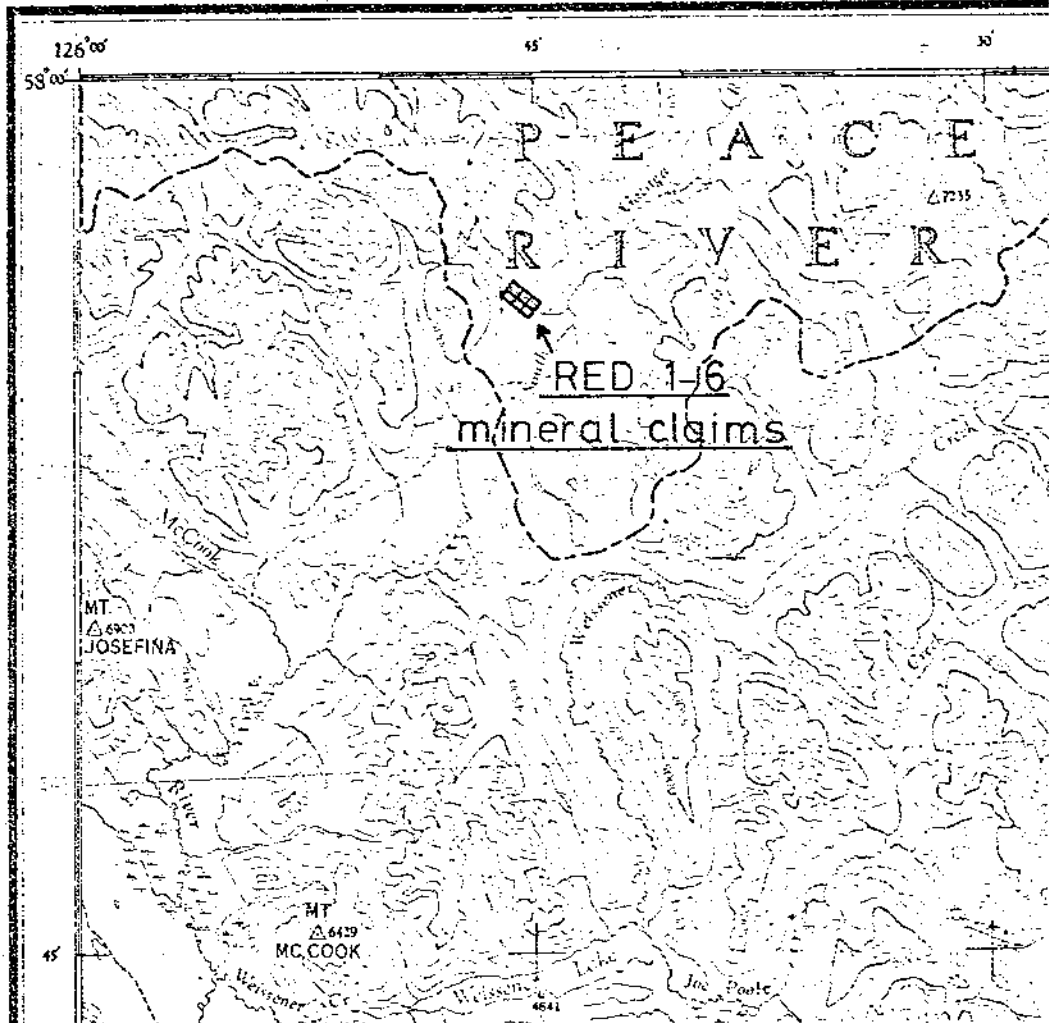
A Q Core

LOGGED BY J. H. Schussler

| FOOTAGE | DESCRIPTION | SAMPLE | FOOTAGE | C. L. | | | | |
|-----------|--|--------|---------|-------|--|--|--|--|
| 0 - 50' | <u>Overburden - Casing.</u> Soil and weathered gossanous graphite schist. | | | | | | | |
| 50' - 96' | <u>Black Graphite Schist</u> Very fine grained black graphite schist with a few randomly oriented quartz stringers. From 80' - 92' quartz stringers more abundant, up to 1½" thick, spaced 2' - 4' apart. Very poor core recovery - estimated at 30% Very minor pyrite in a quartz stringer at 88'. | | | | | | | |
| 96' | Hole caved preventing further drilling. | | | | | | | |
| | | | | | | | | |
| | | | | | | | | |
| | | | | | | | | |
| | | | | | | | | |
| | | | | | | | | |
| | | | | | | | | |
| | | | | | | | | |

HOLE No. 2

NATIONAL TOPOGRAPHIC SERIES



WARE
BRITISH COLUMBIA

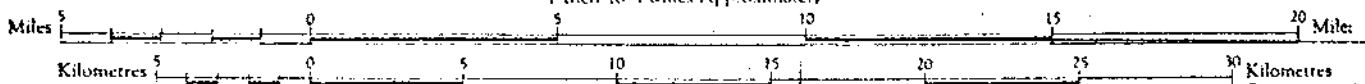
FIRST EDITION

Refer to this Map as: 94 F
EDITION 1 ASE
SHEET 94 F

CANADA, SHEET 94 F

Scale 1 : 250,000

1 Inch to 4 Miles Approximately



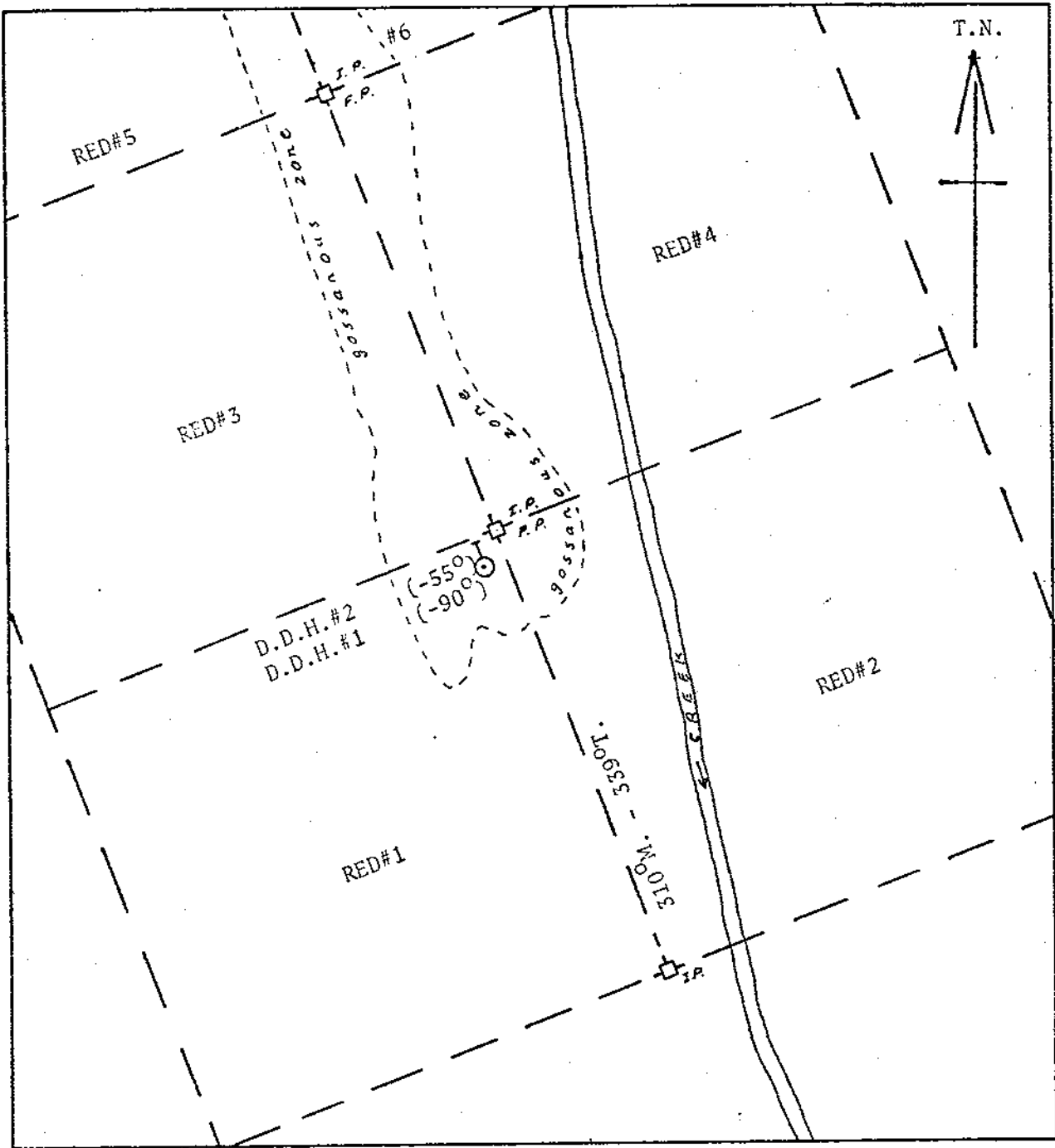
Department of

Mines and Petroleum Resources

ASSESSMENT REPORT

Figure 1. Location of RED 1-6 mineral claims

NO. **5232** MAP **#1**



0 500 1,000 2,000 feet

Scale: 1 inch equals 500 feet.

- ⊙ Diamond drill hole - vertical.
- ⊙- Diamond drill hole - inclined.

Department of
 Mines and Petroleum Resources
ASSESSMENT REPORT
 NO. **5232** MAP **#2**

Figure 2. Location of Diamond Drill Holes on RED mineral claims.