

ZULU EXPLORATIONS LTD (NPL)

DRILLING Z7 DRILL HOLE

The drill used was a Longyear No. 38

Wire Line diamond drill size BQ with 1 7/16" core

LOCATION

Bowron River Area, 50 miles SE of Prince George

CARIBOO MINING DIVISION

ON THE LAD 177 mineral claim

On the Lot adjoining and south of Lot 9590 and

adjoining and West of Lot 4845, or Coal Licence 1644

On the west bank of the Bowron River 100 feet from the river

AZIMUTH . . . . . 1° QUADRILATERAL 53° 121 N.W.

REFERENCE MAP . . . . . 93H/13W

ELEVATION . . . . . APPROXIMATELY 2450

INCLINATION . . . . . 90° from horizontal

DEPTH OF HOLE . . . . . 620 feet

DEPTH OF OVERBURDEN . . 80 feet

BW casing put down to 117 feet

The drill core is stored at the Garraway mine camp.

It is interesting to note that the drill penetrated a lava flow at a depth of 80 feet and after drilling some 30 feet cut brown shale immediately below the lava at 110 feet.

*A. J. Garraway*  
Certified Colliery Manager

Department of	
Mines and Petroleum Resources	
ASSESSMENT REPORT	
NO. 5243	MAP.....

ZULU EXPLORATIONS LTD (NPL)

DIAMOND DRILLING COST

March 2nd, 1973 to April 27th, 1974 ..... 8 weeks

3 men..... 8 weeks each

A. Kary, John Grzyb and A. J. Garraway

SALARIES

SALARY EACH PER MONTH.....\$1,500.00 Gross

3 men at 8 weeks each.....\$9,000.00

Allowance for cooking \$500 per month.....\$1,000.00.....\$10,000.00

MAINTENANCE OF CAMP

Food and supplies.....\$ 960.00

Propane and Diesel fuel.....\$ 176.00.....\$ 1,136.00

TRANSPORTATION

International 4 x 4 truck

from camp to drill and return...10 miles....\$ 40.00

5 return trips to Prince George..100 miles..\$100.00.....\$ 140.00

DIAMOND DRILL

Rental...\$2625.00 per month

8 weeks.....\$5,250.00

Drilling mud.....\$ 65.00

1 BQ Diamond bit.....\$ 431.97

2 BW Casing shoes.....\$ 514.50

2 Tricone bits.....\$ 100.00

Gas & Diesel fuel.....\$ 320.00.....\$ 6,681.47

\$17,957.47

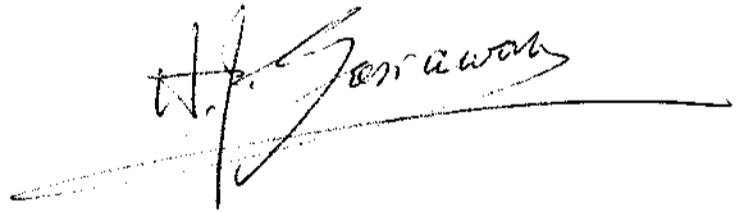
*A. J. Garraway*

ZULU EXPLORATIONS LTD (NPL)

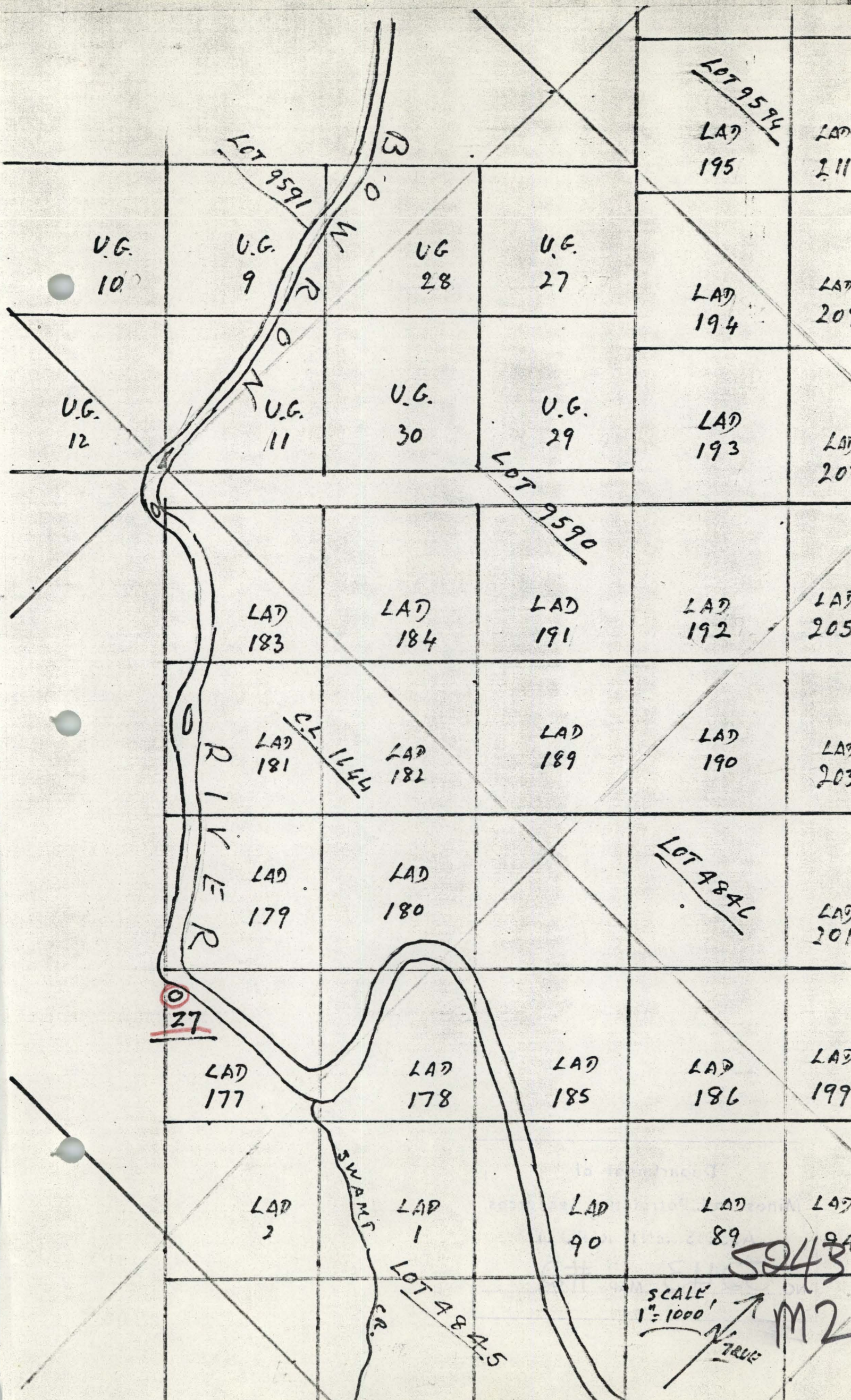
LOGS FOR Z7 DRILL HOLE

0 - 80.....Overburden  
80 - 110.....Lava flow  
110 - 115.....Soft Brown Shale  
115 - 120.....Brown Shale, Harder, Casing to 117 feet  
120 - 216.....Hard Brown Shale, Dark  
216 - 226.....Coal - 10 feet  
226 - 254.....Hard dark brown Shale  
254 - 260.....Conglomerate  
260 - 264.....Sandstone  
264 - 314.....Conglomerate & Sandstone  
314 - 354.....Green Conglomerate with sandstone bands  
354 - 465.....Conglomerate with sandstone bands  
465 - 490.....Hard green Conglomerate - radioactive  
490 - 620.....Fine to course grained greenstone - radioactive

END OF DRILL HOLE

A handwritten signature in black ink, appearing to read "H.P. Jorawa", is written over a horizontal line. The signature is stylized and slanted to the right.





U.G.  
10

U.G.  
9

U.G.  
28

U.G.  
27

U.G.  
12

U.G.  
11

U.G.  
30

U.G.  
29

LAD  
183

LAD  
184

LAD  
191

LAD  
192

LAD  
205

LAD  
181

LAD  
182

LAD  
189

LAD  
190

LAD  
203

LAD  
179

LAD  
180

LAD  
201

LAD  
177

LAD  
178

LAD  
185

LAD  
186

LAD  
199

LAD  
2

LAD  
1

LAD  
90

LAD  
89

LAD  
94

SCALE  
1" = 1000'

5243

M2

TRUE

LOT 9591

LOT 9590

LOT 9594

C.K. 1644

LOT 4846

LOT 4845

RIVER

SWAMP CR.

27

LAD  
211

LAD  
195

LAD  
209

LAD  
194

LAD  
207

LAD  
193

LAD  
205

LAD  
203

LAD  
201

LAD  
199

LAD  
94

LAD  
89



55'

ZULU EXPLORATIONS LTD (NPL)

50'

93H/13W

HUTTON  
CARIBOO DISTRICT  
BRITISH COLUMBIA

5243  
MAP 3

Ét  
LA  
RE  
aé  
Ce  
mi  
de