

only 2,895 acres have been covered in this report. The cost for this portion was \$3,722.14 or \$1.29 per acre.

Respectfully submitted,



R. E. ANDERSON, P. Eng.
Exploration Manager

October 31, 1974

SECTION B - STATEMENT OF EXPENDITURES

1. SURVEY CONTROL (see accompanying invoice) \$2,232.00
(Feb. 28-Mar. 13, 1974) and
(Apr. 30-May 17, 1974.)
McWilliam, Whyte, Goble and Associates -
Kamloops, B.C.

2. TOPOGRAPHIC MAPPING (see accompanying invoice) \$3,722.14
(Feb. 1-15, 1974; July 15-31, 1974)
Pacific Survey Corporation -
Vancouver, B.C.

Total area mapped -	4,270 acres
Area claimed for assessment -	2,895 acres
Total mapping cost -	\$5,490.00
Therefore amount applicable for assessment purposes -	
$\frac{(2,895}{4,270} \times \$5,490)$ -	\$3,722.14

3. BETHLEHEM SUPERVISION \$ 210.00

Erik Andersen - Property Agent
3 days @ \$70.00/day
Accumulated during the time periods
noted in Nos. 1 and 2.

TOTAL EXPENDITURE \$6,164.14

TOTAL CLAIM YEARS 30

204 - 153 SEYMOUR STREET
KAMLOOPS, BRITISH COLUMBIA

INVOICE

TELEPHONE: 372-8835

MAY 22nd

197 4

McWilliam, Whyte, Goble & Associates

BRITISH COLUMBIA LAND SURVEYORS
KAMLOOPS - PRINCE GEORGE - SMITHERS

BETHLEHEM COPPER CORPORATION LTD.,
SUITE 2100 - 1055 WEST HASTINGS STREET
VANCOUVER 1, BRITISH COLUMBIA

ATTN: MR. ERIK ANDERSEN

TERMS: 1 per cent per month charged on overdue accounts

OUR JOB #	74-81	
YOUR FILE #	MAGGIE MINES	Re: Additional Photo Points & Drill Holes,
FEEES	\$	362.00
FIELD WAGES	\$	1,045.00
TRANSPORTATION & EQUIPMENT RENTAL	\$	350.00
OFFICE WAGES	\$	475.00
		<u><u>\$2,232.00</u></u> ✓
TOTAL		

8-845

Est.
FA

PACIFIC SURVEY CORPORATION

INVOICE

Formerly

LOCKWOOD SURVEY CORPORATION LTD.

1409 WEST PENDER STREET VANCOUVER, B. C., CANADA V6B 2S4 TELEPHONE 683-6501

Bethlehem Copper Corporation Limited,
Suite 2100 - 1055 West Hastings Street,
Vancouver, B.C.

Attn: Mr. E. Andersen, Property Agent.

INVOICE NO.	8743
DATE	14 August 1974
YOUR ORDER NO.	
JOB NO.	74-2
PACKING SLIP NO.	
SHIPPED VIA	

QUANTITY	DESCRIPTION	UNIT PRICE	TOTAL
TO:	Completion:		
	1-inch equals 200 feet scribed topographic mapping with a 10 foot contour interval, Maggie Mine area, delivered on Packing Slips 7558, 7825:		
	Lump sum		<u>\$5,490.00</u>
	8-845 A. Pak. K		
TERMS: NET CASH. INTEREST CHARGED ON OVERDUE ACCOUNTS			

PACKING SLIP

PACIFIC SURVEY CORPORATION

Formerly

LOCKWOOD SURVEY CORPORATION LTD.

1409 WEST PENDER STREET VANCOUVER, B. C., CANADA V6B 2S4 TELEPHONE 683-6501

No. 7825

DATE JUL 31 1974

Bethlehem Copper Corporation Ltd.
Ste. 2100 - 1055 West Hastings Street
Vancouver, B.C.

YOUR ORDER NO.

Attn: Mr. Erik Andersen
Property Agent

Our JOB No. 74-2

SHIP VIA Deliver

QUANTITY	DESCRIPTION
One	<p><u>Re: Maggie Mine Area</u></p> <p>Original fairdrawn film positive of each of the following sheets:</p> <p>N12 012 East 3/8 of M12 West 5/8 of 013</p>
Two	<p>Ozolid prints of each of the above.</p>

RECEIVED BY

Erik Andersen

DATE

July 31, 1974

683-6501

Telephone: 755-1144
Cables: CANLOCK

Lockwood Survey Corporation Limited



1450 GORDON STREET, VANCOUVER, B.C. V6G 2S4

1409 West Pender Street, Vancouver, B.C.
V6G 2S4

PACKING SLIP

No. ~~13071~~

7558

SHIP TO

Bethlehem Copper Corporation Ltd.,
Ste. 2100 - 1055 West Hastings Street,
Vancouver, B.C.

DATE 19 February 1974

YOUR ORDER NO.

OUR ORDER NO.

VIA

74-2
Deliver

HS/ba

Attention: Mr. E. Andersen, Property Agent

QUANTITY

DESCRIPTION

One

Re: Maggie Mine Area
Original fairdrawn film positive of sheet K 13 and part of K 14
at a scale of 1-inch equals 200 feet with 10 foot contours.

Two

Ozolid prints of each of the above.

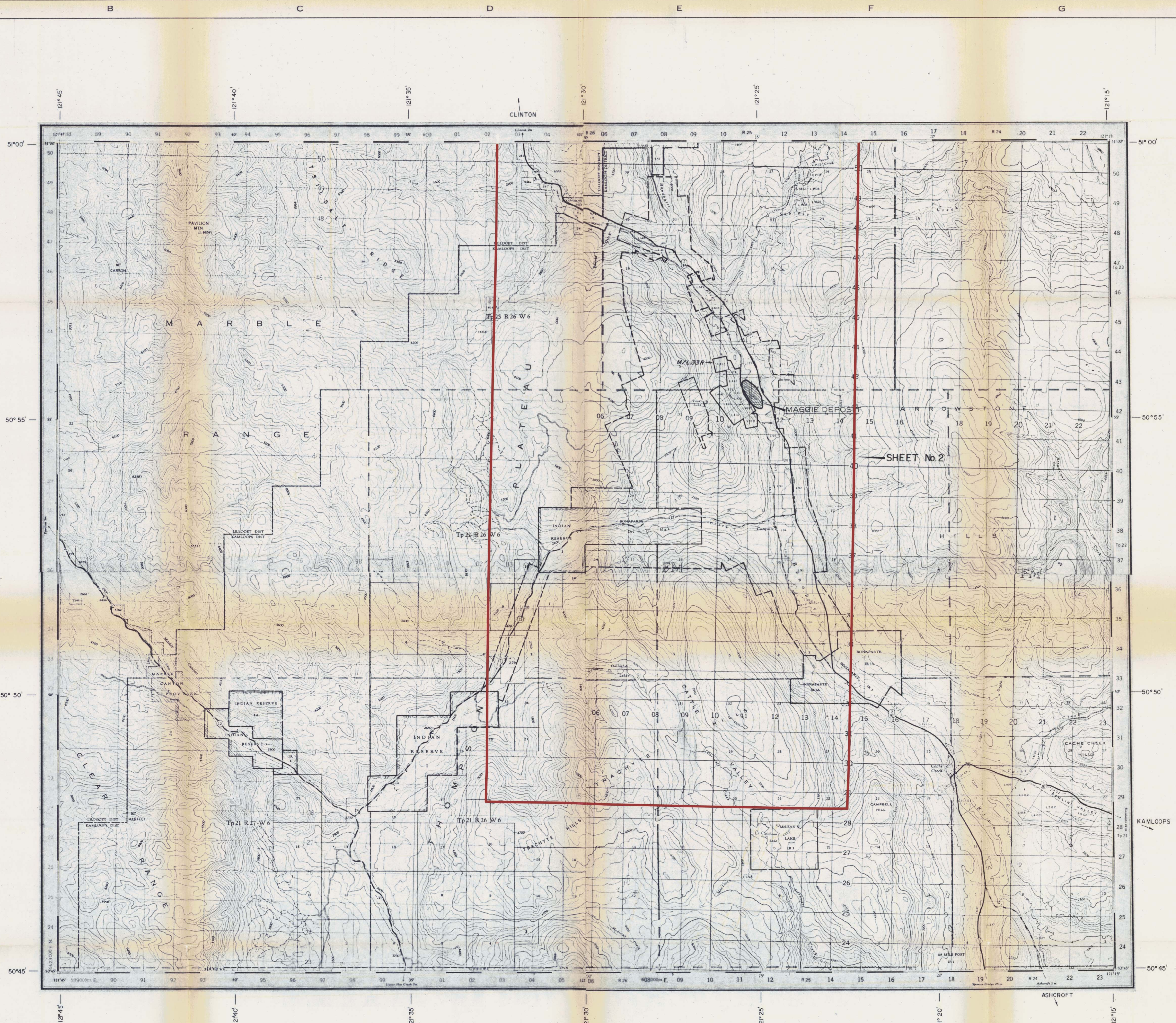
8-860

RECEIVED BY

E. Andersen

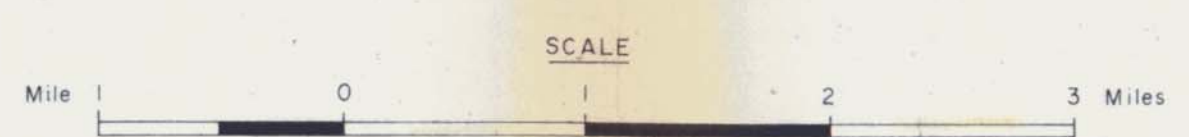
DATE

Feb. 19/74



5261
M1

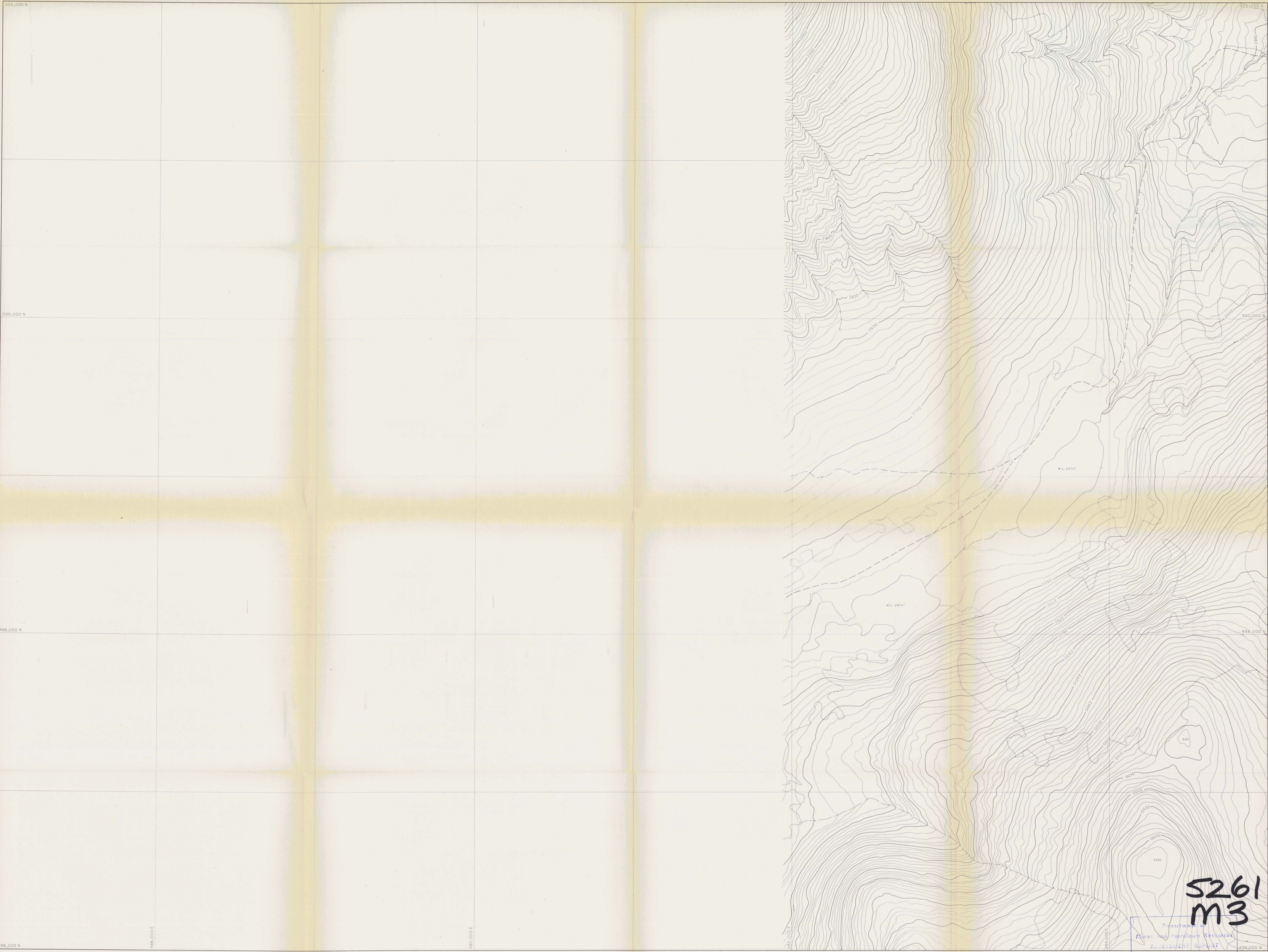
Department of
Mines and Petroleum Resources
ASSESSMENT REPORT
NO. 5261 MAP #1



DATE REVISION	BY	DEPT. - EXPLORATION

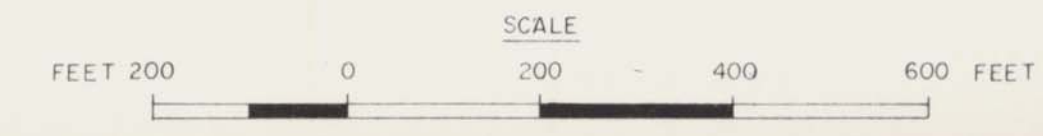


TITLE - MAGGIE MINE PROJECT GENERAL LOCATION MAP	
FILE NUMBER - NTS. 921/13E 8 921/14W	DRAWING NUMBER - 1



5261
M3

Department of
Mines and Petroleum Resources
ASSESSMENT REPORT
NO 5261 MAP #3



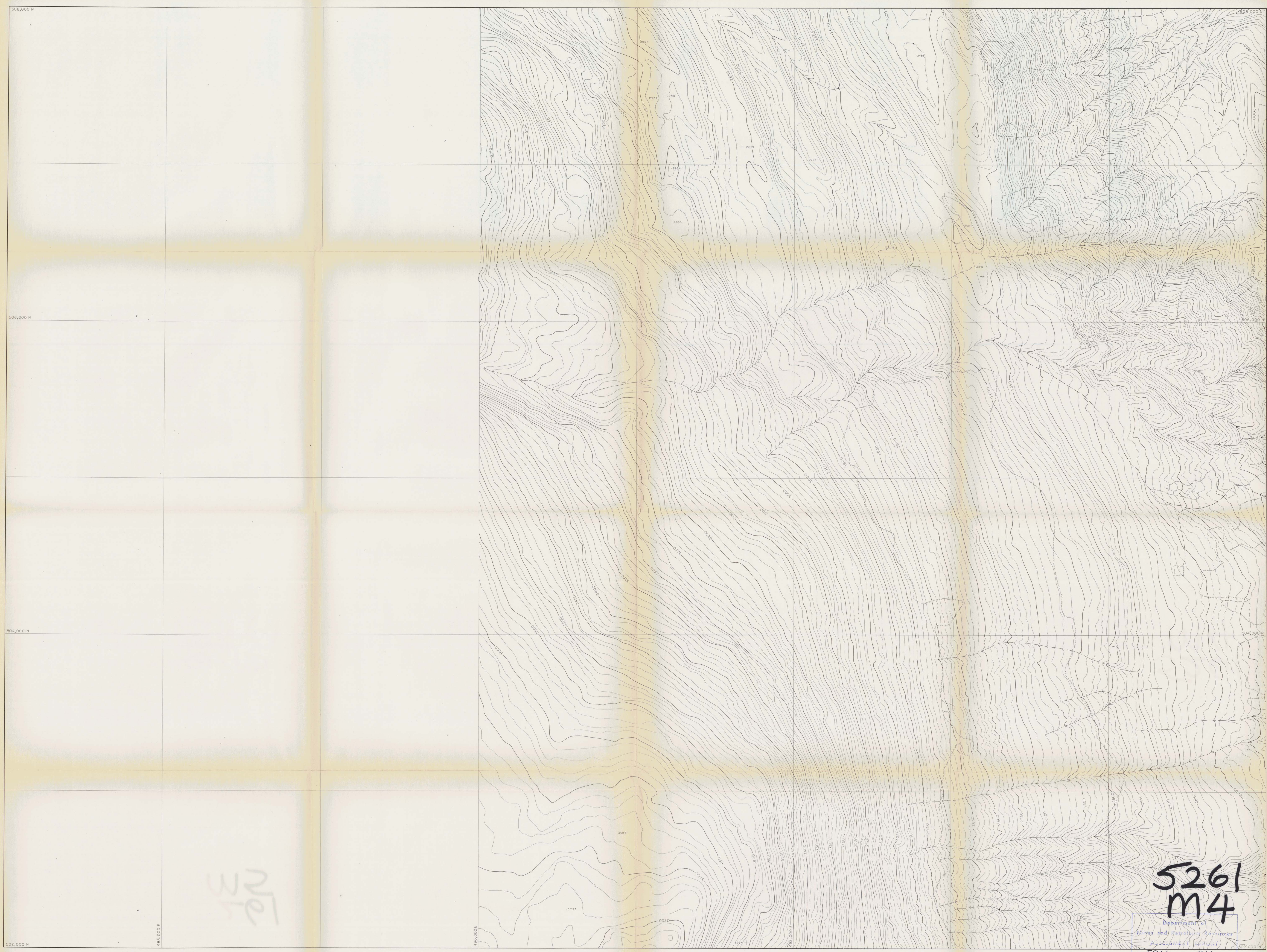
SHEET INDEX

	9	10	11	12	13	14
G						
H						
M						
L						
K						
J						

DATE REVISED	BY	DEPT
CHECKED		DRAWN BY
APPROVED		
DATE		
SCALE - 1 inch equals 200 feet		

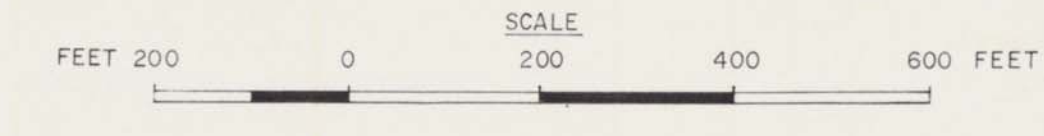


TITLE - MAGGIE MINE PROJECT 1974 TOPOGRAPHIC MAP	
FILE NUMBER -	DRAWING NUMBER -
	M - 12



5261
M4

Department of
Mines and Geotechnical Services
Geological Survey
NO. 5261 Map #4



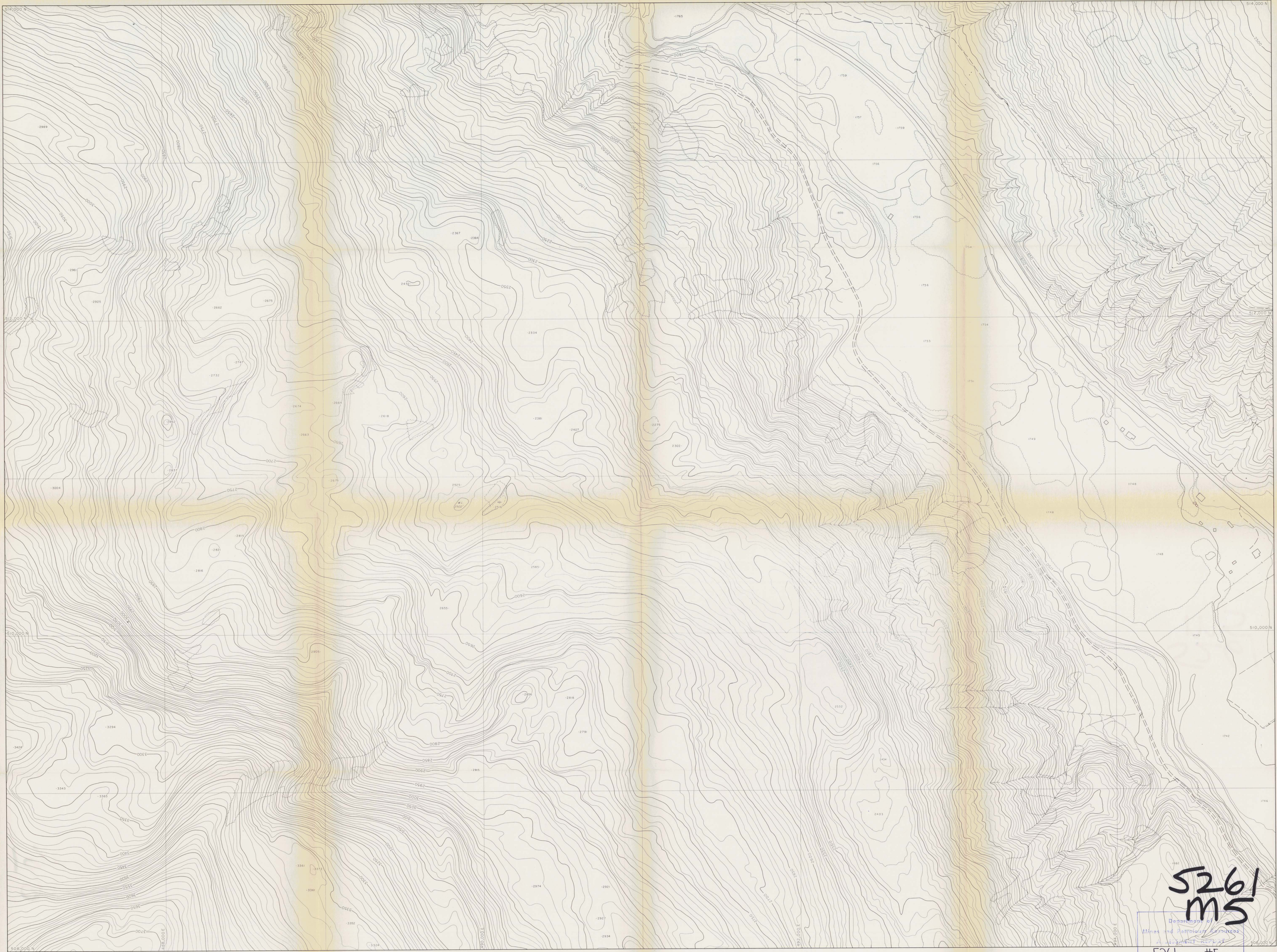
SHEET INDEX

9	10	11	12	13	14
Q					
N					
M					
L					
K					
J					

DATE	REVISED	BY	DEPI -
			DRAWN BY -
			CHECKED -
			APPROVED -
			DATE -
			SCALE - 1 inch equals 200 feet



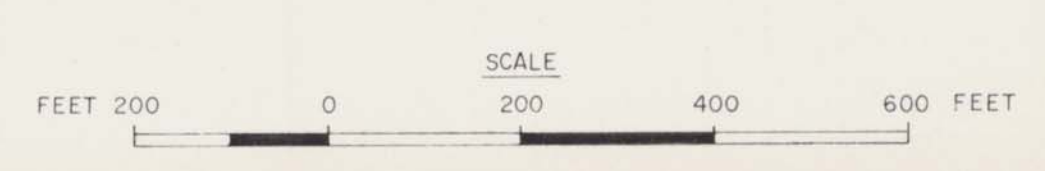
TITLE - MAGGIE MINE PROJECT 1974 TOPOGRAPHIC MAP	
FILE NUMBER -	DRAWING NUMBER -
	N - 12



5261
MS

Department of
Mines and Technical Services
No 5261 MAP #5

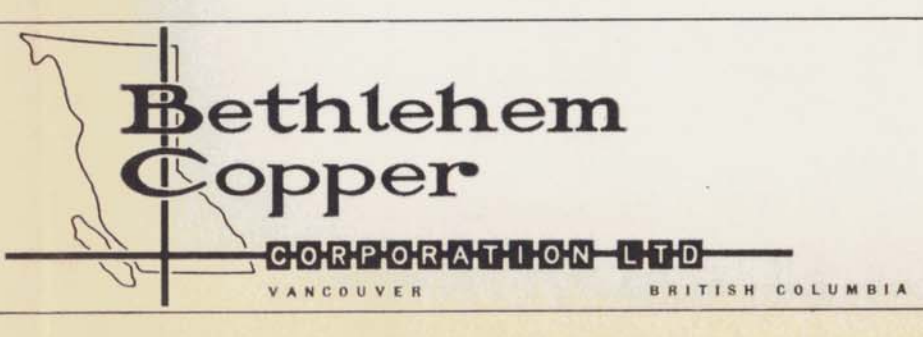
Lockwood Survey Corporation Limited
DATE OF PHOTOGRAPHY, 19 JUNE 1972



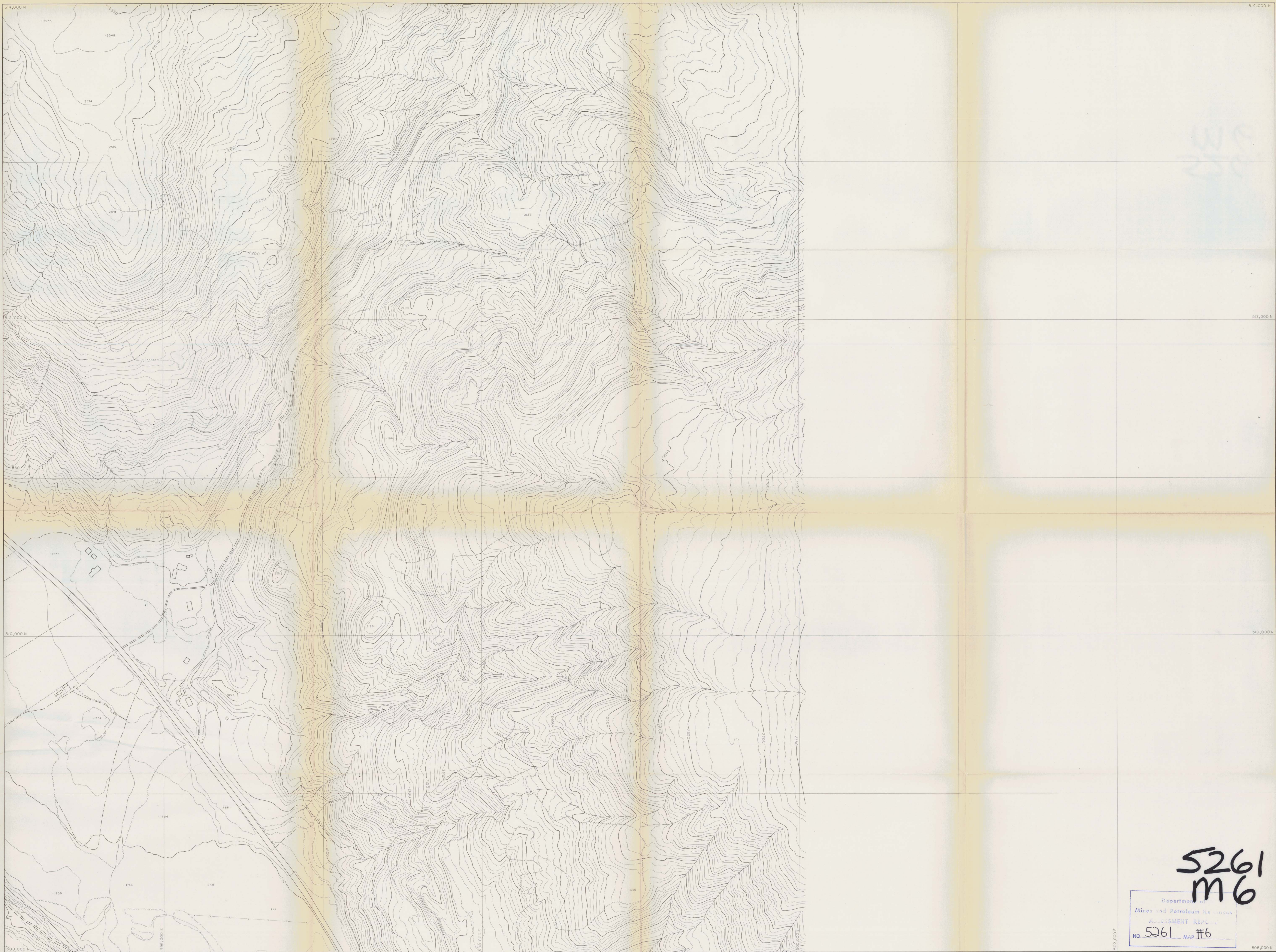
SHEET INDEX -

9	10	11	12	13	14
0					
1					
2					
3					
4					
5					
6					
7					
8					

DATE REVISED	BY	DEPT. -
		DRAWN BY -
		CHECKED -
		APPROVED -
		DATE -
		SCALE - 1 inch equals 200 feet

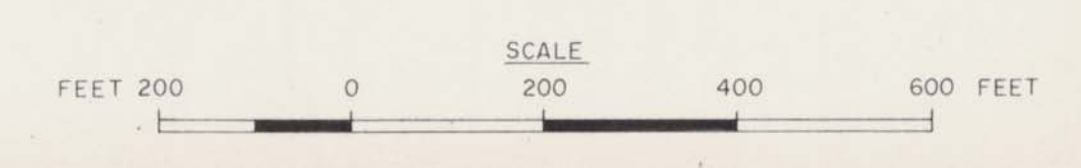


TITLE -	
MAGGIE MINE PROJECT	
1974 TOPOGRAPHIC MAP	
FILE NUMBER -	DRAWING NUMBER -
	0 - 12



5261
M6

Department of
Mines and Petroleum Resources
ASSESSMENT REPORT
NO. 5261 MAP #6



Q	9	10	11	12	13	14
N						
M						
L						
K						
J						

DATE	REVISED	BY	DEPT.



TITLE - MAGGIE MINE PROJECT 1974 TOPOGRAPHIC MAP	
FILE NUMBER -	DRAWING NUMBER -
	0 - 13