

Department of
Mines and Petroleum Resources
ASSESSMENT REPORT
NO. 5262 MAP #20

5262 M20

TO ACCOMPANY GEOLOGICAL & GEOPHYSICAL
REPORT ON HEP-EXPO
LOCATED 50° 127'30"
BY B. BOWEN MAY TO SEPT., 1974

LEGEND

INSTRUMENTATION:
MCPHAR GP-70 PROTON PRECESSION MAGNETOMETER
To obtain total field add 55,140 gammas to the plotted values

CREEK, INTERMITTENT
CREEK, WIDTH DEFINED, INFERRED
ROAD SURVEYED UNSURVEYED
SWAMP

SYMBOLS

Transect Survey, Hubs
Picket Line, Showing line and station designation
Heb Claim Boundary Unsurveyed, showing claim number and claim post
Diamond Drill Hole

A-1	A-2	A-3	A-4	A-5	A-6	A-7	A-8	A-9	A-10	A-11
B-1	B-2	B-3	B-4	B-5	B-6	B-7	B-8	B-9	B-10	B-11
C-1	C-2	C-3	C-4	C-5	C-6	C-7	C-8	C-9	C-10	C-11
D-1	D-2	D-3	D-4	D-5	D-6	D-7	D-8	D-9	D-10	D-11
E-1	E-2	E-3	E-4	E-5	E-6	E-7	E-8	E-9	E-10	E-11
F-1	F-2	F-3	F-4	F-5	F-6	F-7	F-8	F-9	F-10	F-11
G-1	G-2	G-3	G-4	G-5	G-6	G-7	G-8	G-9	G-10	G-11
H-1	H-2	H-3	H-4	H-5	H-6	H-7	H-8	H-9	H-10	H-11

Plate 19

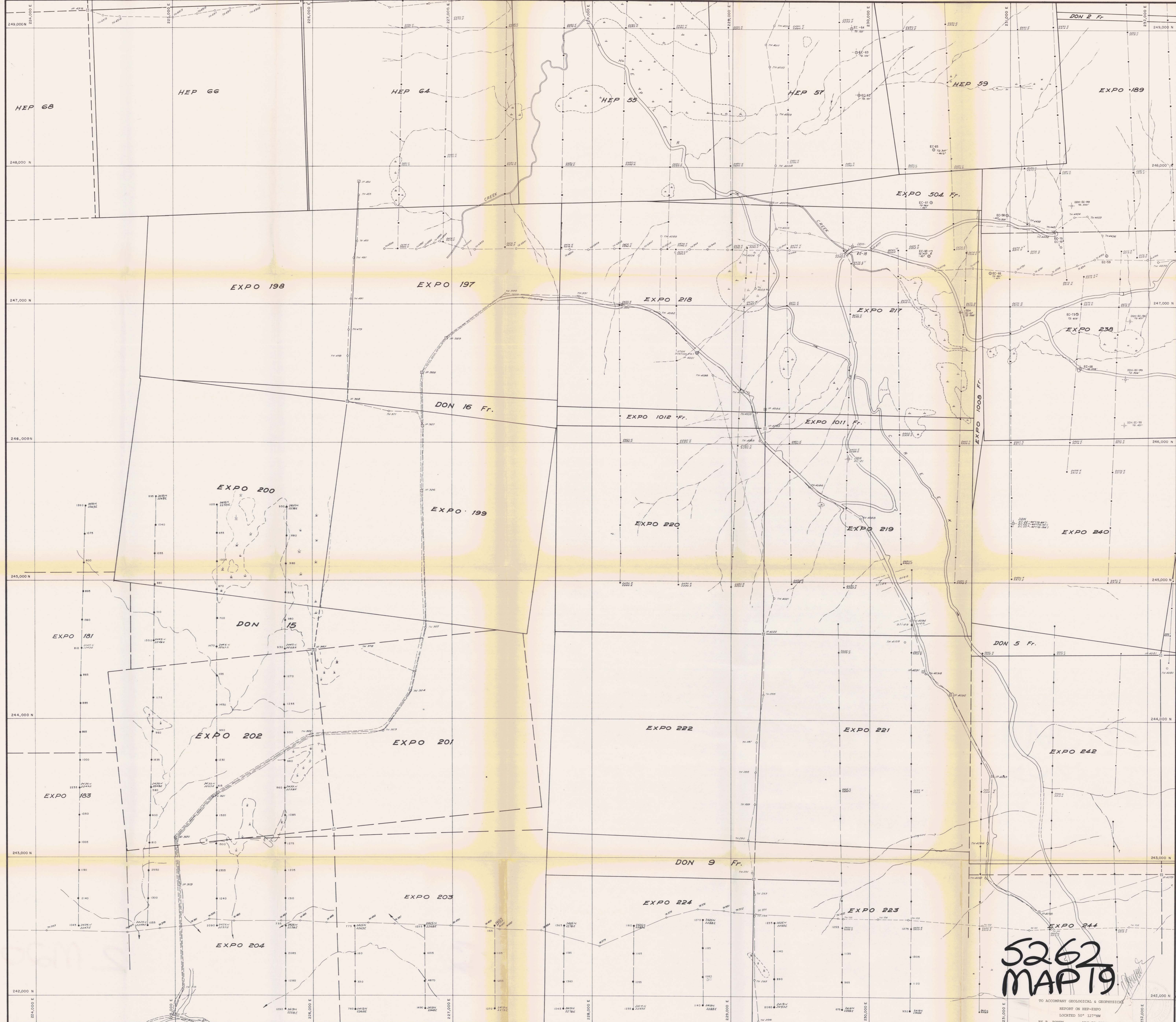
UTAH MINES LTD.
MINERAL EXPLORATION & DEVELOPMENT DEPARTMENT
VANCOUVER ISLAND, BRITISH COLUMBIA

EXPO GROUP
VANCOUVER ISLAND, B. C.

GROUND MAGNETICS SURVEY
TOTAL FIELD INTENSITY

Work by: [Name] Date: Nov 74 NTS Ref: [Number]
Drawn by: [Name] Revised: [Date] MAP of E-5

SCALE: 1" = 100 FEET



LEGEND

INSTRUMENTATION

- McPhar GP-70 PROTON PRECESSION MAGNETOMETER
To obtain total field add 55,140 gammas to the plotted values
- CREEK, INTERMITTENT
- CREEK, WIDTH DEFINED, INFERRED
- ROAD SURVEYED UNSURVEYED
- SWAMP

SYMBOLS

- Transit Survey Hubs
- Picket Line, Showing line and station designation
- HEP Claim Boundary Unsurveyed, showing claim number and claim post
- Diamond Drill Hole

21800	21810	21820	21830	21840	21850	21860	21870	21880	21890	21900	21910	21920	21930	21940	21950	21960	21970	21980	21990		
A-1	A-2	A-3	A-4	A-5	A-6	A-7	A-8	A-9	A-10	A-11	B-1	B-2	B-3	B-4	B-5	B-6	B-7	B-8	B-9	B-10	B-11
C-1	C-2	C-3	C-4	C-5	C-6	C-7	C-8	C-9	C-10	C-11	D-1	D-2	D-3	D-4	D-5	D-6	D-7	D-8	D-9	D-10	D-11
E-1	E-2	E-3	E-4	E-5	E-6	E-7	E-8	E-9	E-10	E-11	F-1	F-2	F-3	F-4	F-5	F-6	F-7	F-8	F-9	F-10	F-11
G-1	G-2	G-3	G-4	G-5	G-6	G-7	G-8	G-9	G-10	G-11	H-1	H-2	H-3	H-4	H-5	H-6	H-7	H-8	H-9	H-10	H-11

**5262
MAP 19**

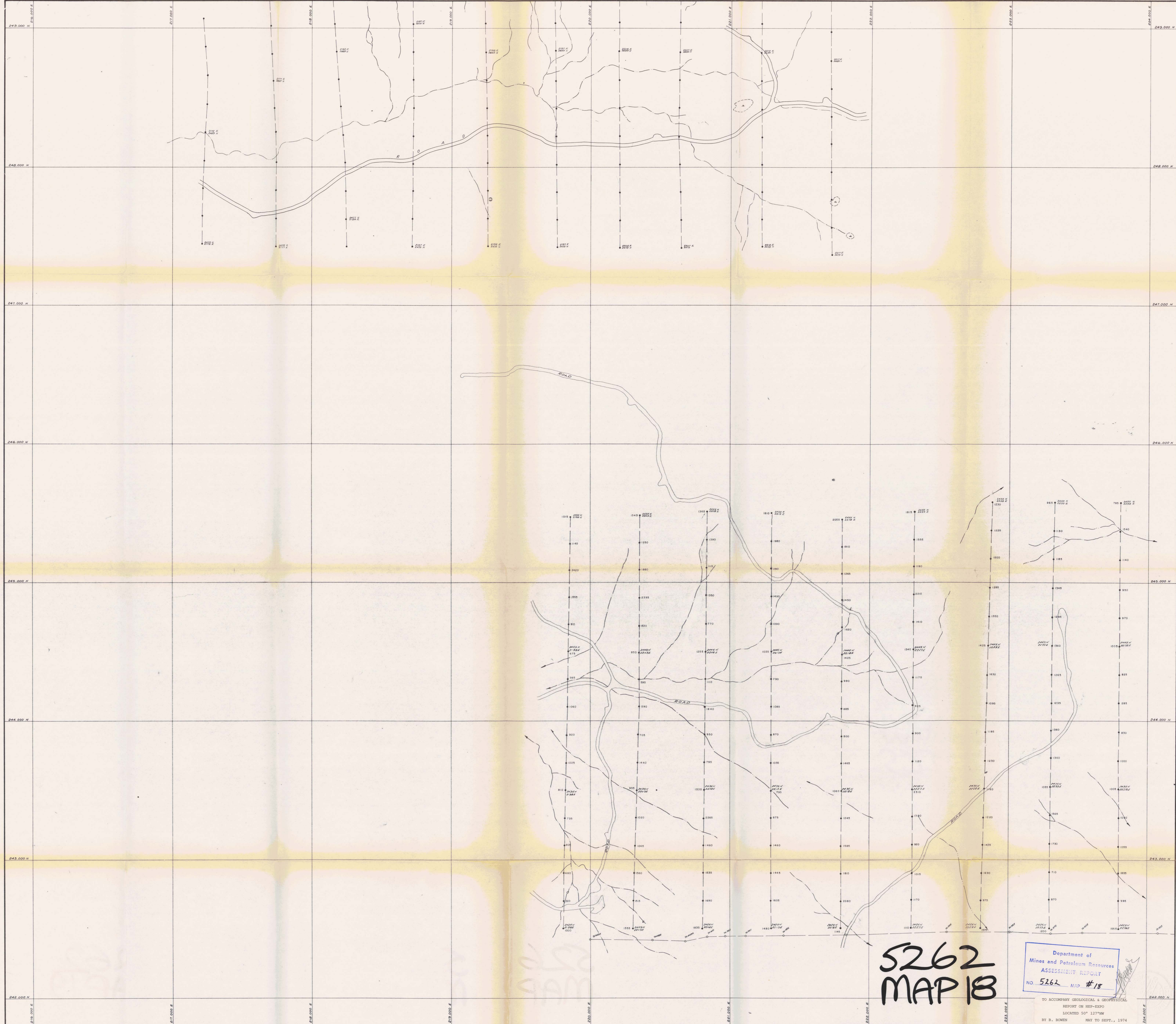
TO ACCOMPANY GEOLOGICAL & GEOPHYSICAL
REPORT ON HEP-EXPO
LOCATED 50° 12' N W
BY B. BOWEN MAY TO SEPT., 1974

Department of
UTAH MINES LTD.
MINES AND PATROL
EXPLORATION & DEVELOPMENT DEPARTMENT
VANCOUVER BRITISH COLUMBIA

5262 MAP #19 EXPO GROUP
VANCOUVER ISLAND, B.C.

**GROUND MAGNETICS SURVEY
TOTAL FIELD INTENSITY**

Work by: R. M. ... Date: ... NTS Ref: ...
Drawn by: C.C. ... Revised: ... MAP of D-5
Scale: 1" = 1000' FEET



5262
MAP 18

Department of
Mines and Petroleum Resources
ASSESSMENT REPORT
NO. 5262 MAP #18

TO ACCOMPANY GEOLOGICAL & GEOCHEMICAL
REPORT ON HEP-EXPO
LOCATED 50° 12' 37" N
BY B. BORNEN
MAY TO SEPT., 1974

LEGEND

INSTRUMENTATION
MPPHAR GP-70 PROTON PRECESSION MAGNETOMETER
To obtain total field add 55,140 gammas to the plotted values
CREEK, INTERMITTENT
CREEK, WIDTH DEFINED, INFERRED
ROAD SURVEYED UNSURVEYED
SWAMP

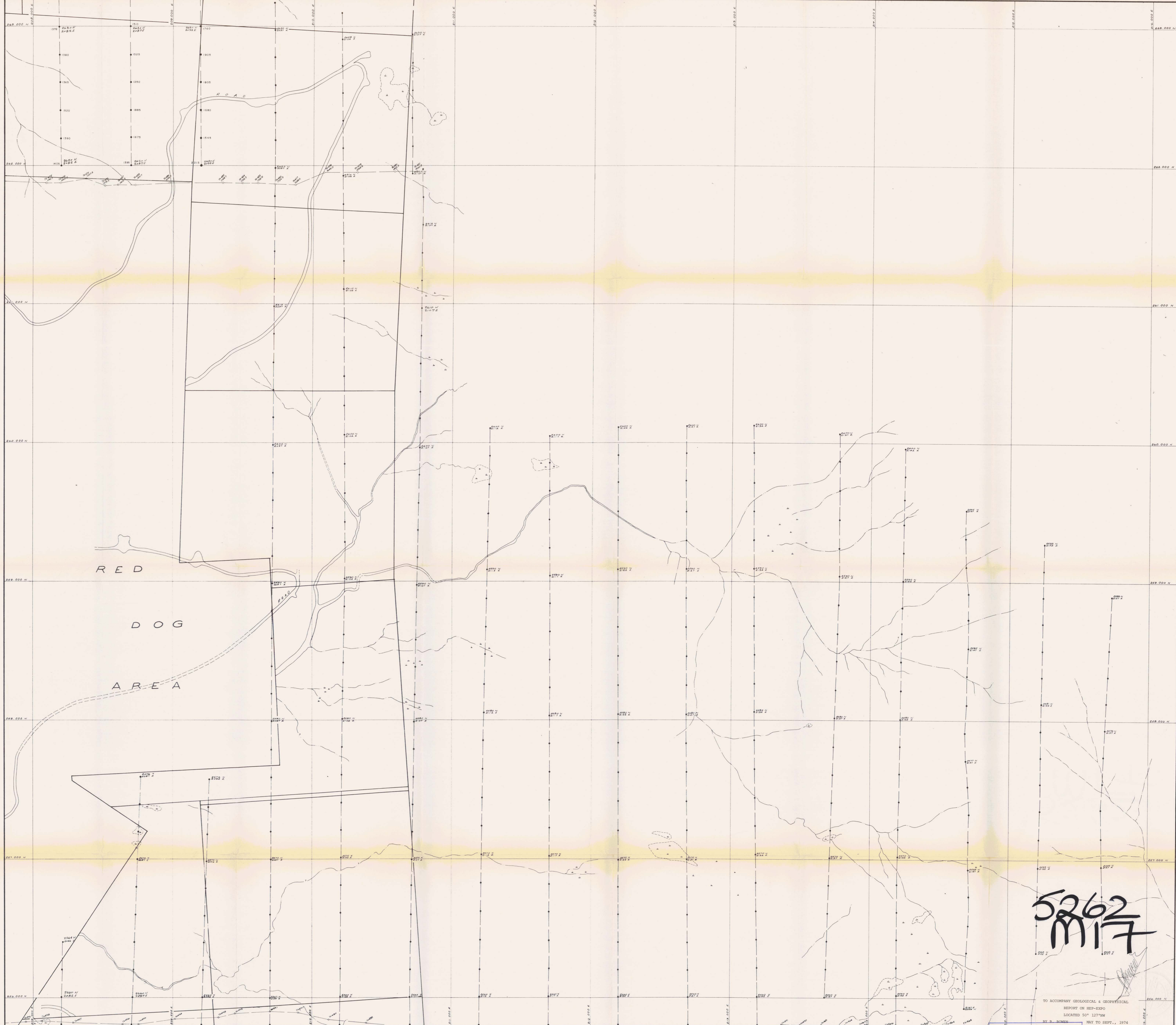
SYMBOLS

Transect Survey Hubs
Picket Line, Showing line and station designation
Heb Claim Boundary Unsurveyed, showing claim number and claim post
Diamond Drill Hole
Exp. Post

A-1	F-1	G-1	H-1	A-2	F-2	G-2	H-2	A-3	F-3	G-3	H-3	A-4	F-4	G-4	H-4	A-5	F-5	G-5	H-5	A-6	F-6	G-6	H-6	A-7	F-7	G-7	H-7	A-8	F-8	G-8	H-8	A-9	F-9	G-9	H-9	A-10	F-10	G-10	H-10	A-11	F-11	G-11	H-11
-----	-----	-----	-----	-----	-----	-----	-----	-----	-----	-----	-----	-----	-----	-----	-----	-----	-----	-----	-----	-----	-----	-----	-----	-----	-----	-----	-----	-----	-----	-----	-----	-----	-----	-----	-----	------	------	------	------	------	------	------	------

Plate 17
UTAH MINES LTD.
MINERAL EXPLORATION & DEVELOPMENT DEPARTMENT
VANCOUVER BRITISH COLUMBIA
EXPO GROUP
VANCOUVER ISLAND, B. C.
GROUND MAGNETICS SURVEY
TOTAL FIELD INTENSITY

Work by: A. Mitchell Date: May 74 NTS Ref:
Drawn by: C.P. Revised: MAP of D-4
Scale: 1" = 1000' FEET



5262
MIT

LEGEND

INSTRUMENTATION
 MPHAR GP-70 PROTON PRECESSION MAGNETOMETER
 To obtain total field add 55,140 gammas to the plotted values
 CREEK, INTERMITTENT
 CREEK, WIDTH DEFINED, INFERRED
 ROAD SURVEYED UNSURVEYED
 SWAMP

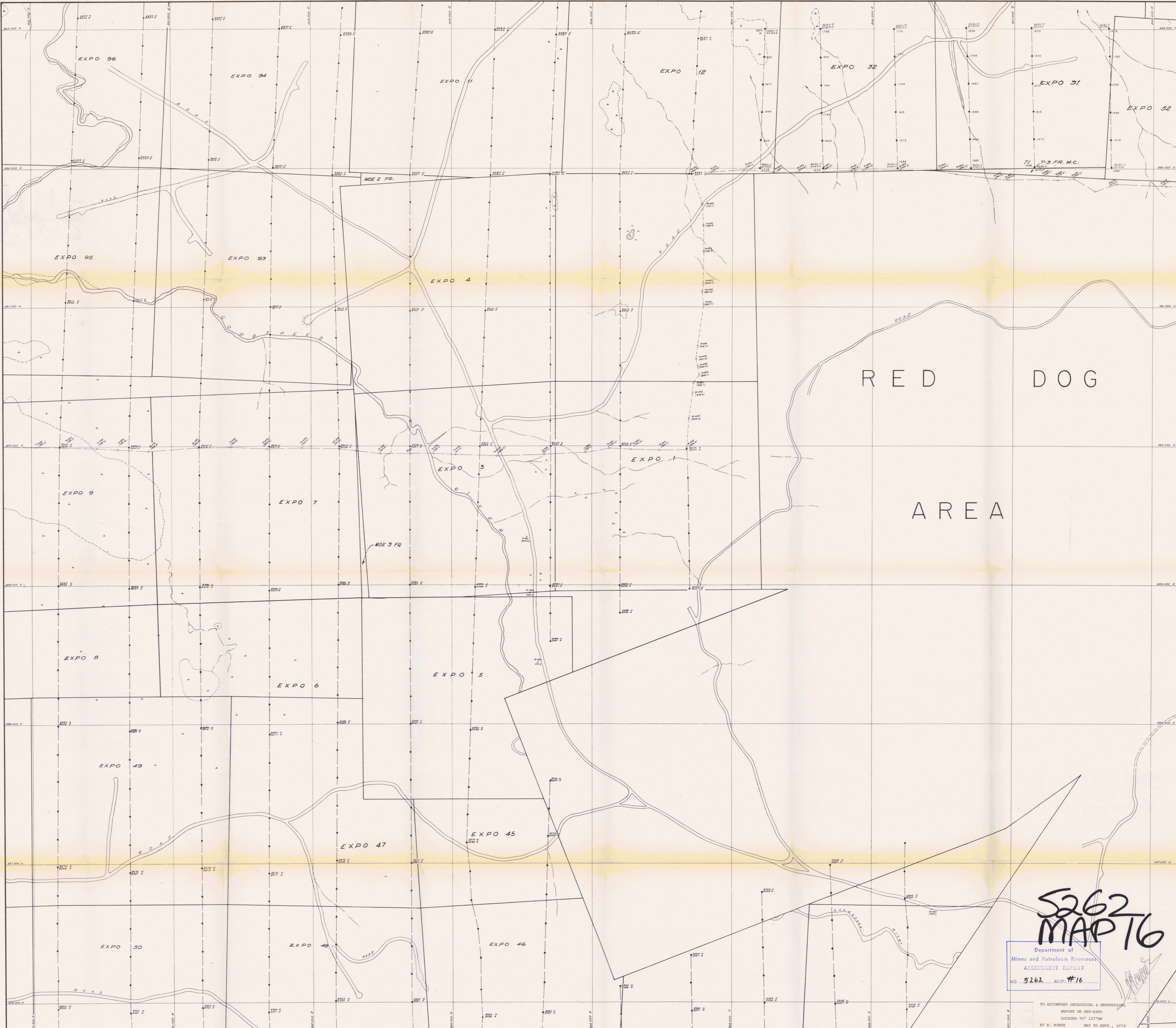
SYMBOLS

Transect Survey, Hubs
 Fisher Line, Showing line and station designation
 Map Claim Boundary Unsurveyed, showing claim number and claim post
 Diamond Drill Hole

LINE	STATION	INTENSITY	LINE	STATION	INTENSITY
A-1	1	1743	A-4	4	1740
A-2	2	1743	A-5	5	1740
A-3	3	1743	A-6	6	1740
A-4	4	1743	A-7	7	1740
A-5	5	1743	A-8	8	1740
A-6	6	1743	A-9	9	1740
A-7	7	1743	A-10	10	1740
A-8	8	1743	A-11	11	1740
A-9	9	1743			
A-10	10	1743			
A-11	11	1743			
B-1	1	1743	B-4	4	1740
B-2	2	1743	B-5	5	1740
B-3	3	1743	B-6	6	1740
B-4	4	1743	B-7	7	1740
B-5	5	1743	B-8	8	1740
B-6	6	1743	B-9	9	1740
B-7	7	1743	B-10	10	1740
B-8	8	1743	B-11	11	1740
B-9	9	1743			
B-10	10	1743			
B-11	11	1743			
C-1	1	1743	C-4	4	1740
C-2	2	1743	C-5	5	1740
C-3	3	1743	C-6	6	1740
C-4	4	1743	C-7	7	1740
C-5	5	1743	C-8	8	1740
C-6	6	1743	C-9	9	1740
C-7	7	1743	C-10	10	1740
C-8	8	1743	C-11	11	1740
C-9	9	1743			
C-10	10	1743			
C-11	11	1743			
D-1	1	1743	D-4	4	1740
D-2	2	1743	D-5	5	1740
D-3	3	1743	D-6	6	1740
D-4	4	1743	D-7	7	1740
D-5	5	1743	D-8	8	1740
D-6	6	1743	D-9	9	1740
D-7	7	1743	D-10	10	1740
D-8	8	1743	D-11	11	1740
D-9	9	1743			
D-10	10	1743			
D-11	11	1743			
E-1	1	1743	E-4	4	1740
E-2	2	1743	E-5	5	1740
E-3	3	1743	E-6	6	1740
E-4	4	1743	E-7	7	1740
E-5	5	1743	E-8	8	1740
E-6	6	1743	E-9	9	1740
E-7	7	1743	E-10	10	1740
E-8	8	1743	E-11	11	1740
E-9	9	1743			
E-10	10	1743			
E-11	11	1743			
F-1	1	1743	F-4	4	1740
F-2	2	1743	F-5	5	1740
F-3	3	1743	F-6	6	1740
F-4	4	1743	F-7	7	1740
F-5	5	1743	F-8	8	1740
F-6	6	1743	F-9	9	1740
F-7	7	1743	F-10	10	1740
F-8	8	1743	F-11	11	1740
F-9	9	1743			
F-10	10	1743			
F-11	11	1743			
G-1	1	1743	G-4	4	1740
G-2	2	1743	G-5	5	1740
G-3	3	1743	G-6	6	1740
G-4	4	1743	G-7	7	1740
G-5	5	1743	G-8	8	1740
G-6	6	1743	G-9	9	1740
G-7	7	1743	G-10	10	1740
G-8	8	1743	G-11	11	1740
G-9	9	1743			
G-10	10	1743			
G-11	11	1743			
H-1	1	1743	H-4	4	1740
H-2	2	1743	H-5	5	1740
H-3	3	1743	H-6	6	1740
H-4	4	1743	H-7	7	1740
H-5	5	1743	H-8	8	1740
H-6	6	1743	H-9	9	1740
H-7	7	1743	H-10	10	1740
H-8	8	1743	H-11	11	1740
H-9	9	1743			
H-10	10	1743			
H-11	11	1743			

Department of Mines and Petroleum Resources
UTAH MINES LTD.
 MINERAL EXPLORATION DEVELOPMENT DEPARTMENT
 VANCOUVER BRITISH COLUMBIA
 NO. 5262 MAP #17
EXPO GROUP
 VANCOUVER ISLAND, B.C.
GROUND MAGNETICS SURVEY
TOTAL FIELD INTENSITY
 Work by: E. H. H. Date: May 1974 NTS Ref: MAP of B-3
 Drawn by: C.P. Revised: May 1974
 SCALE IN FEET

TO ACCOMPANY GEOLOGICAL & GEOPHYSICAL REPORT ON REP-EXPO LOCATED 50° 127'W BY B. BOWEN MAY TO SEPT., 1974



RED DOG
AREA

**5262
MAP 16**

Department of
Mines and Petroleum Resources
ASSESSMENT REPORT
NO. 5262 MAP #16

TO ACCOMPANY GEOLOGICAL & GEOPHYSICAL
REPORT ON HEP-EXPO
LOCATED 50° 12' N W
BY B. BOWEN MAY TO SEPT., 1974

LEGEND

INSTRUMENTATION

- MuPAR GP-70 PROTON PRESSION MAGNETOMETER
To obtain total field add 55,140 gammas to the plotted values
- CREEK, INTERMITTENT
- CREEK, WIDTH DEFINED, INFERRED
- ROAD SURVEYED UNSURVEYED
- SWAMP

SYMBOLS

- Transit Survey, Hubs
- Picket Line, Showing line and station designation
- Heb Claim Boundary Unsurveyed, showing claim number and claim post
- Diamond Drill Hole

12000	12100	12200	12300	12400	12500	12600	12700	12800	12900	13000
A-1	A-2	A-3	A-4	A-5	A-6	A-7	A-8	A-9	A-10	A-11
B-1	B-2	B-3	B-4	B-5	B-6	B-7	B-8	B-9	B-10	B-11
C-1	C-2	C-3	C-4	C-5	C-6	C-7	C-8	C-9	C-10	C-11
D-1	D-2	D-3	D-4	D-5	D-6	D-7	D-8	D-9	D-10	D-11
E-1	E-2	E-3	E-4	E-5	E-6	E-7	E-8	E-9	E-10	E-11
F-1	F-2	F-3	F-4	F-5	F-6	F-7	F-8	F-9	F-10	F-11
G-1	G-2	G-3	G-4	G-5	G-6	G-7	G-8	G-9	G-10	G-11
H-1	H-2	H-3	H-4	H-5	H-6	H-7	H-8	H-9	H-10	H-11

Plate 15

UTAH MINES LTD.
MINERAL EXPLORATION & DEVELOPMENT DEPARTMENT
VANCOUVER, BRITISH COLUMBIA

EXPO GROUP
VANCOUVER ISLAND, B. C.

GROUND MAGNETICS SURVEY
TOTAL FIELD INTENSITY

Work by: B. Bowen Date: May 74 NTS Ref:
Drawn by: C.D. Revised: MAP #16 of B-2

Scale: 1" = 1000'



LEGEND

INSTRUMENTATION

MCPHAR GP-70 PROTON PRECESSION MAGNETOMETER
To obtain total field add 55,400 gammas to the plotted values

CREEK, INTERMITTENT
CREEK, WIDTH DEFINED, INFERRED
ROAD SURVEYED UNSURVEYED
SWAMP

SYMBOLS

Transect Survey, Hubs
Pitak Line, Showing line and station designation
Map Claim Boundary Unsurveyed, showing claim number and claim post
Diamond Drill Hole

256000	257000	258000	259000	260000	261000	262000	263000
A-1	A-2	A-3	A-4	A-5	A-6	A-7	A-8
A-9	A-10	A-11	B-1	B-2	B-3	B-4	B-5
B-6	B-7	B-8	B-9	B-10	B-11	C-1	C-2
C-3	C-4	C-5	C-6	C-7	C-8	C-9	C-10
C-11	D-1	D-2	D-3	D-4	D-5	D-6	D-7
D-8	D-9	D-10	D-11	E-1	E-2	E-3	E-4
E-5	E-6	E-7	E-8	E-9	E-10	E-11	F-1
F-2	F-3	F-4	F-5	F-6	F-7	F-8	F-9
F-10	F-11	G-1	G-2	G-3	G-4	G-5	G-6
G-7	G-8	G-9	G-10	G-11	H-1	H-2	H-3
H-4	H-5	H-6	H-7	H-8	H-9	H-10	H-11

5262

M15

Department of Mines and Petroleum Resources
UTAH MINES LTD.
ASSIGNMENT REPORT
VANCOUVER ISLAND, B.C.

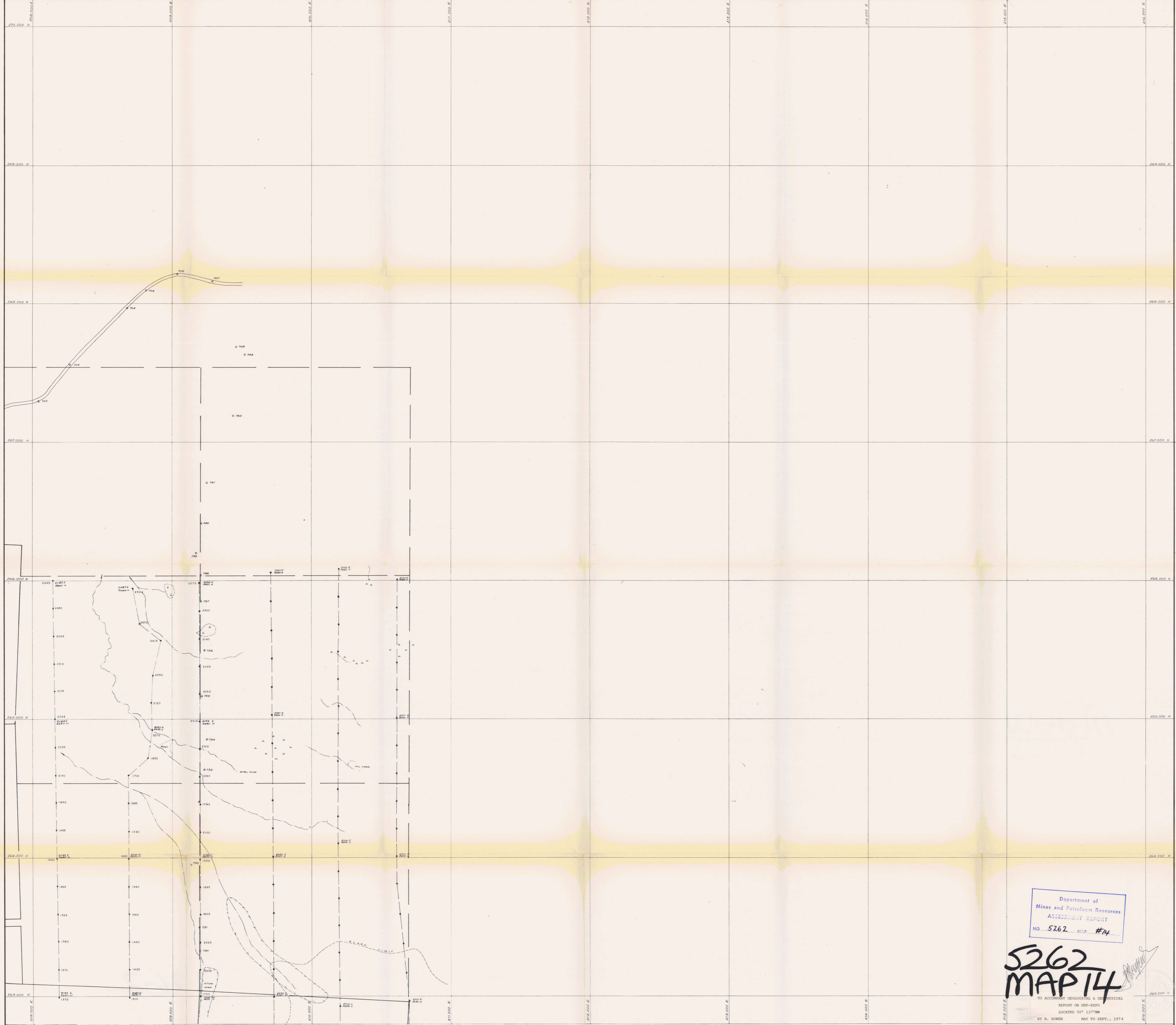
TO ACCOMPANY GEOLOGICAL & GEOPHYSICAL REPORT ON HEP-EXPO LOCATED 50° 12' 17" N MAY TO SEPT., 1974 BY B. BOWEN

Plate 14

GROUND MAGNETICS SURVEY TOTAL FIELD INTENSITY

Map No. 5262

Scale: 1" = 1000'



LEGEND

INSTRUMENTATION:
 MAPHAR GP-70 PROTON PRECESSION MAGNETOMETER
 To obtain total field add 55,140 gammas to the plotted values

CREEK, INTERMITTENT
CREEK, WIDTH DEFINED, INFERRED
ROAD SURVEYED UNSURVEYED
SWAMP

SYMBOLS

--- Transit Survey, Hubs
 --- Pocket Line, Showing line and station designation
 650 678
 697 694 Hep. Claim Boundary Unsurveyed, showing claim number and claim post
 □ Diamond Drill Hole
 * * *

22000	22100	22200	22300	22400	22500	22600	22700	22800	22900	23000
A-1	A-2	A-3	A-4	A-5	A-6	A-7	A-8	A-9	A-10	A-11
B-1	B-2	B-3	B-4	B-5	B-6	B-7	B-8	B-9	B-10	B-11
C-1	C-2	C-3	C-4	C-5	C-6	C-7	C-8	C-9	C-10	C-11
D-1	D-2	D-3	D-4	D-5	D-6	D-7	D-8	D-9	D-10	D-11
E-1	E-2	E-3	E-4	E-5	E-6	E-7	E-8	E-9	E-10	E-11
F-1	F-2	F-3	F-4	F-5	F-6	F-7	F-8	F-9	F-10	F-11
G-1	G-2	G-3	G-4	G-5	G-6	G-7	G-8	G-9	G-10	G-11
H-1	H-2	H-3	H-4	H-5	H-6	H-7	H-8	H-9	H-10	H-11

Department of
 Mines and Petroleum Resources
ASSESSMENT REPORT
 NO. 5262 MAP #14

5262
MAP 14

TO ACCOMPANY GEOLOGICAL & GEOPHYSICAL
 REPORT ON HED-EXPO
 LOCATED 50° 12' 30" N
 BY B. BOWEN MAY TO SEPT., 1974

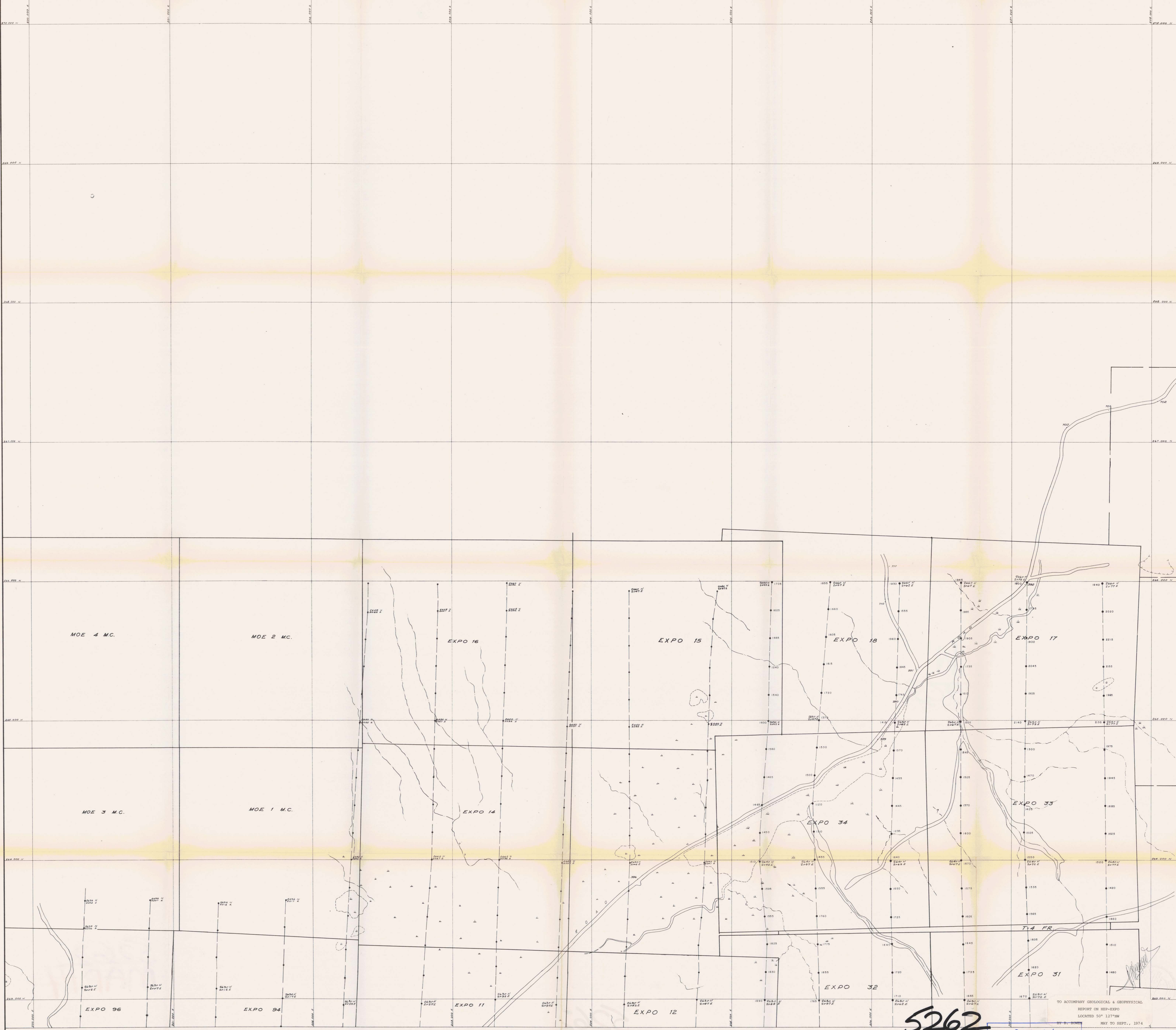
Plate 13

UTAH MINES LTD.
 MINERAL EXPLORATION & DEVELOPMENT DEPARTMENT
 VANCOUVER, BRITISH COLUMBIA

EXPO GROUP
 VANCOUVER ISLAND, B. C.

GROUND MAGNETICS SURVEY
TOTAL FIELD INTENSITY

Work By: *K. Williams* Date Rec'd: _____ NTS Ref: _____
 Drawn By: *CB* Revised: _____ MAP of **A-3**
 0 100 200 300 400 500
 SCALE IN FEET



LEGEND

INSTRUMENTATION:

MIPBAR GP-70 PROTON PRECESSION MAGNETOMETER
 To obtain total field add 55,140 gammas to the plotted values

CREEK, INTERMITTENT
 CREEK, WIDTH DEFINED, INFERRED
 ROAD SURVEYED UNSURVEYED
 SWAMP

SYMBOLS

Transit Survey, Hubs
 Diamond Drill Hole
 Picket Line, Showing line and station designation
 Map Claim Boundary Unsurveyed, showing claim number and claim post

23500	23600	23700	23800	23900	24000	24100	24200	24300	24400	24500	24600	24700	24800	24900	25000
A-1	A-2	A-3	A-4	A-5	A-6	A-7	A-8	A-9	A-10	A-11	A-12	A-13	A-14	A-15	A-16
B-1	B-2	B-3	B-4	B-5	B-6	B-7	B-8	B-9	B-10	B-11	B-12	B-13	B-14	B-15	B-16
C-1	C-2	C-3	C-4	C-5	C-6	C-7	C-8	C-9	C-10	C-11	C-12	C-13	C-14	C-15	C-16
D-1	D-2	D-3	D-4	D-5	D-6	D-7	D-8	D-9	D-10	D-11	D-12	D-13	D-14	D-15	D-16
E-1	E-2	E-3	E-4	E-5	E-6	E-7	E-8	E-9	E-10	E-11	E-12	E-13	E-14	E-15	E-16
F-1	F-2	F-3	F-4	F-5	F-6	F-7	F-8	F-9	F-10	F-11	F-12	F-13	F-14	F-15	F-16
G-1	G-2	G-3	G-4	G-5	G-6	G-7	G-8	G-9	G-10	G-11	G-12	G-13	G-14	G-15	G-16
H-1	H-2	H-3	H-4	H-5	H-6	H-7	H-8	H-9	H-10	H-11	H-12	H-13	H-14	H-15	H-16

5262
MB

Department of Mines and Petroleum Resources
 EXPLORATION & DEVELOPMENT DEPARTMENT
 VANCOUVER BRITISH COLUMBIA

UTAH MINES LTD.
 EXPLORATION & DEVELOPMENT DEPARTMENT
 VANCOUVER BRITISH COLUMBIA

NO 5262 MAP #13
 Plate 12

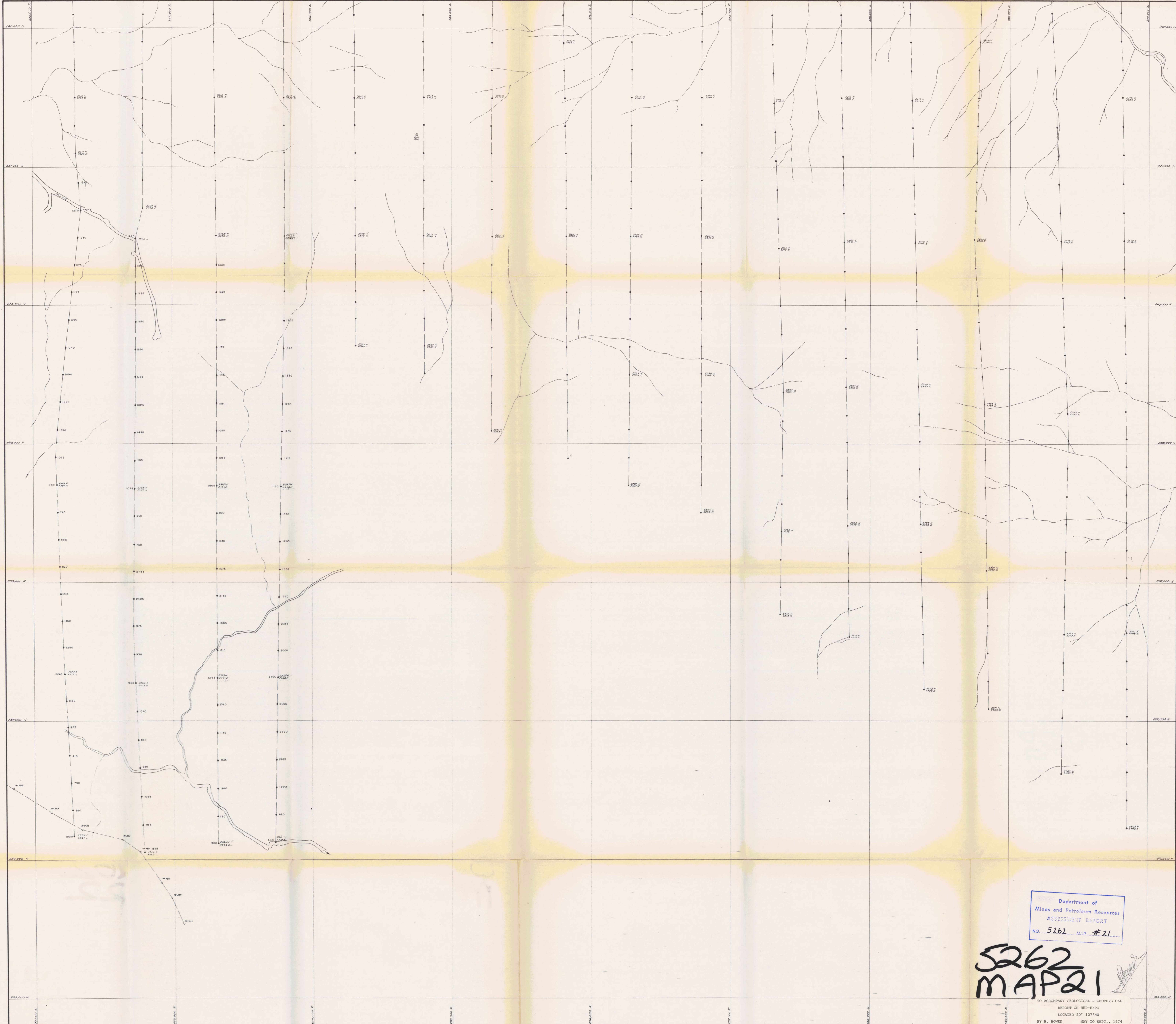
EXPO GROUP
 VANCOUVER ISLAND, B C

GROUND MAGNETICS SURVEY
TOTAL FIELD INTENSITY

Work by J. Wilton Date Nov '74 NTS Ref
 Drawn by C.D. Revised MAP of A-2

Scale in Feet

TO ACCOMPANY GEOLOGICAL & GEOPHYSICAL
 REPORT ON REEF-3000
 LOCATED 50° 13' 10" N
 124° 50' 00" W
 MAY TO SEPT., 1974



Department of
Mines and Petroleum Resources
ASSESSMENT REPORT
NO. 5262 MAP # 21

**5262
MAP 21**

TO ACCOMPANY GEOLOGICAL & GEOPHYSICAL
REPORT ON HEF-EXPO
LOCATED 50° 12' 30" N
BY D. BOWEN MAY TO SEPT., 1974

LEGEND

INSTRUMENTATION
MCPHAR GP-70 PROTON PRECESSION MAGNETOMETER
To obtain total field add 55,140 gammas to the plotted values
CREEK, INTERMITTENT
CREEK, WIDTH DEFINED, INFERRED
ROAD SURVEYED UNSURVEYED
SWAMP

SYMBOLS

Transit Survey Hubs
Picket Line, Showing line and station designation
Heb. Claim Boundary Unsurveyed, showing claim number and claim post
Diamond Drill Hole

A-1	A-2	A-3	A-4	A-5	A-6	A-7	A-8	A-9	A-10	A-11
B-1	B-2	B-3	B-4	B-5	B-6	B-7	B-8	B-9	B-10	B-11
C-1	C-2	C-3	C-4	C-5	C-6	C-7	C-8	C-9	C-10	C-11
D-1	D-2	D-3	D-4	D-5	D-6	D-7	D-8	D-9	D-10	D-11
E-1	E-2	E-3	E-4	E-5	E-6	E-7	E-8	E-9	E-10	E-11
F-1	F-2	F-3	F-4	F-5	F-6	F-7	F-8	F-9	F-10	F-11
G-1	G-2	G-3	G-4	G-5	G-6	G-7	G-8	G-9	G-10	G-11
H-1	H-2	H-3	H-4	H-5	H-6	H-7	H-8	H-9	H-10	H-11

Plate 20

UTAH MINES LTD.
MINERAL EXPLORATION & DEVELOPMENT DEPARTMENT
VANCOUVER ISLAND, B. C.

EXPO GROUP
VANCOUVER ISLAND, B. C.

GROUND MAGNETICS SURVEY
TOTAL FIELD INTENSITY

Work by: K. Williams Date Rev. 74 NTS Ref.
Drawn by: C.D. Revised: MAP of E-6
Scale: 1" = 100' 1" = 300'