

UMEX

UNION MINIERE EXPLORATIONS
AND MINING CORPORATION LIMITED

SUITE 200 - 4299 CANADA WAY
BURNABY B.C. V5G 1V3

TELEPHONE 437-9491

5286

94D/16W

ASSESSMENT REPORT

on

DIAMOND DRILLING

on the

BOW 1-8 MINERAL CLAIMS

(Record Numbers 127858-127861, 127887-127890)

Omineca Mining Division

N.T.S. ¹¹94D/16W

56°45' North, 126°21' West

Department of
Mines and Petroleum Resources
ASSESSMENT REPORT
NO. 5286 MAP _____

by

Colin V. Dyson, P.Eng.

Work Dates: August 27-September 14, 1974

Owner: Union Miniere Explorations and
Mining Corporation Limited

Date: October 18, 1974

CONTENTS

	Page
INTRODUCTION	1
DIAMOND* DRILLING	1

Appendices

APPENDIX I Diamond Drill Logs	2
APPENDIX II Statement of Expenditures	4

Figures

	following page
FIGURE 1 #1 Bow claims, Location Map, 1:250,000	1
FIGURE 2 #2 Location of Drill Hole B-74-1 on Bow #1 Mineral Claim, 1"=800'	1

ASSESSMENT REPORT ON DIAMOND DRILLING
ON THE BOW 1-8 MINERAL CLAIMS

INTRODUCTION

The Bow claims are located in the Omineca Mining Division, and lie four miles west of Fleet Peak at elevations varying from 4500 to 5500 feet (see Figure 1). Access is by helicopter or by float plane, which can land on Wrede Lake that borders the southern edge of the property.

Diamond drilling set-up began on August 27 with drilling commenced on August 29 and terminated on September 14, 1974.

The drill core was logged by Mr. D. Christie, B.Sc. (Geological Engineering) who was under the supervision of Mr. C.V. Dyson, P.Eng.

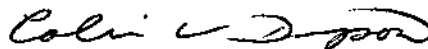
DIAMOND DRILLING

One diamond drill hole of AX size core was completed with a Longyear-24 diamond drill on the Bow #1 mineral claim. The hole was at a 45° angle on a bearing of S85°W, that went to a depth of 202 feet. The elevation of the drill hole is about 5600 feet (see figure 2).

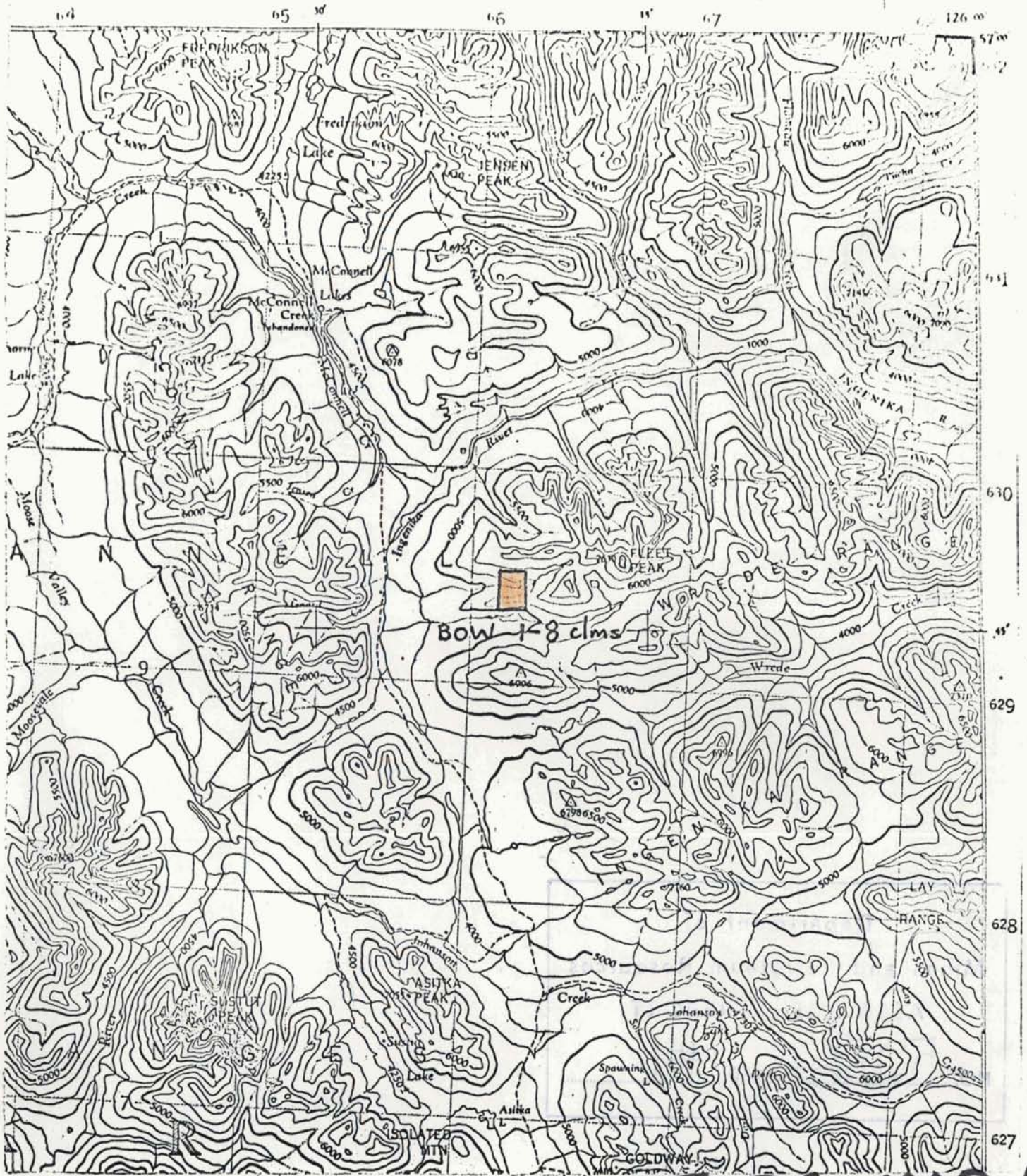
The drill core is stored at 930 Railway Avenue, Richmond, B.C.

The drill logs are attached as Appendix I, and a Statement of Expenditures is given in Appendix II.

Respectfully submitted,



Colin V. Dyson, P.Eng.

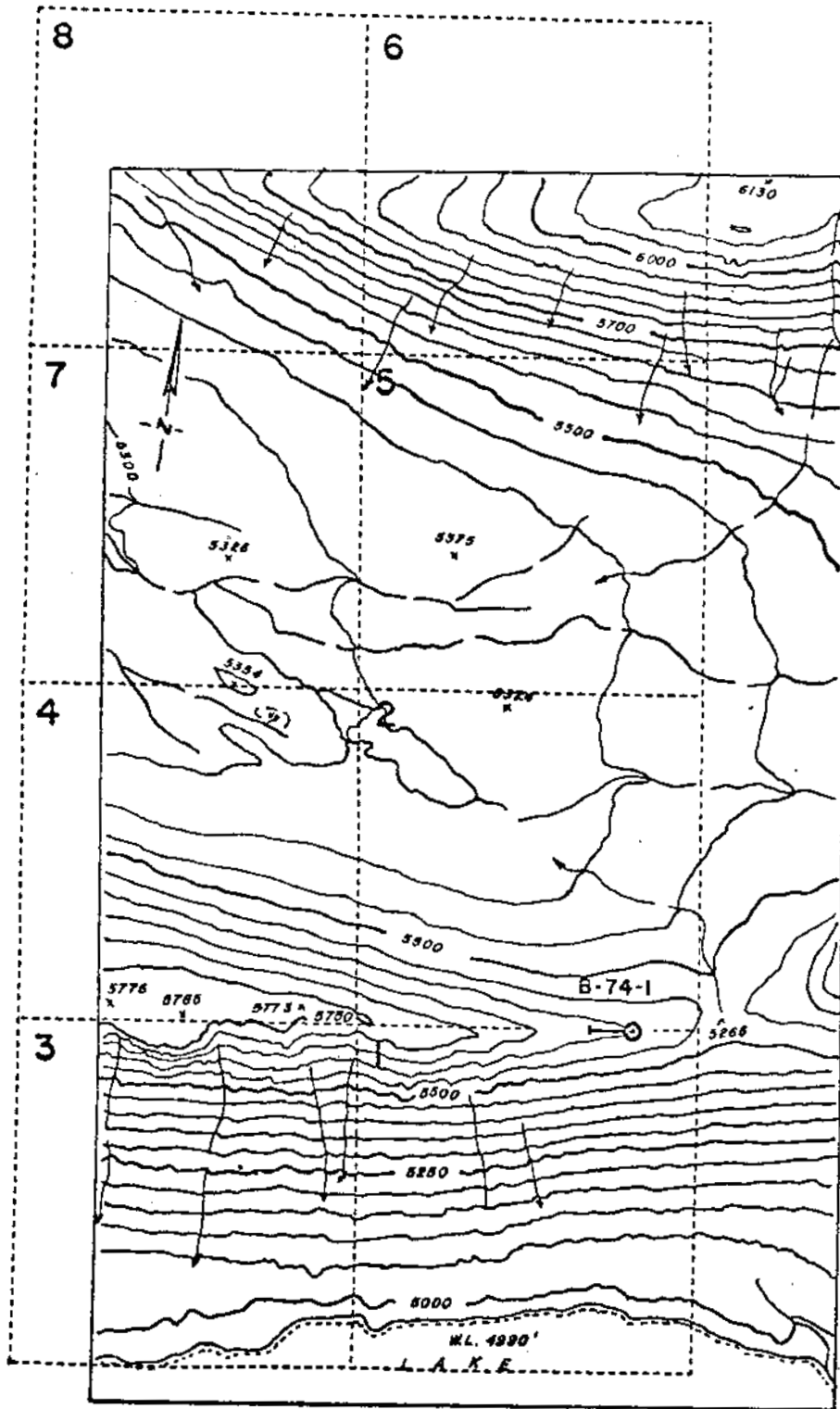


5286 MAP 1

FIGURE 1

BOW CLAIMS, LOCATION MAP
 Omineca Mining Division
 N.T.S. 94D/16 - Scale 1:250,000

C. Dupon



NTS: 940



5286
MAP 2

FIGURE 2

LEGEND

- 2 Claim boundary and number
- Location of diamond drill hole
- Location of Drill Hole B-74-1 on Bow #1 Mineral Claim

Department of
Mines and Petroleum Resources
N.T.S. 940/16

Scale 1"=800'

ASSESSMENT REPORT

NO. 5286 MAP #2

Handwritten signature

APPENDIX I

UNION MINIERE EXPLORATIONS AND MINING CORPORATION LIMITED
DRILL RECORD.

AREA	Hole No. BOW #1 - 74	Depth: 202 feet	Drilled By: R. Morehouse, UMEX
ANOMALY:	Bearing and Dip: 585W, dip -45°	Started: August 29	Machine: Longyear-24
CLAIM:	Local Coord. X= Y= Z=	Completed: September 14	Diam Drill: AX

Described By:
D.H. Christie

Depth		% Core	Description & Lithology	Mineralization	Dip	No. of Sample.
From	To					
Start	16'-4"	?	Rubbly core, broken, oxidized, leached, diorite feldspar porphyry?			
16'-4"	34'		Diorite porphyry with 2 to 3 mm feldspar phenocrysts in very fine grained grey groundmass; phenocryst borders in places indistinct or blurred; phenocrysts very slightly epidotized in other areas. Fractures coated with dried blood-brown stain. Pyrite 0.5% disseminated irregularly throughout. Epidote and pyrite concentration at 16' minus 4' - 1/8" irregular quartz vein with pyrite and peripheral epidotization at 16' minus 2' - small quartz-calcite vein with very pale malachite stain at 16' minus 1/2' - manganese(?) dendrites at 16' minus 1/2', 18', 19 1/2' - core rubbly, oxidized only 4 1/2' of core from 25 to 36 - abundant pyrite on parallel fractures at 34' fractures at approximately 30° to core axis.			
34'	105 1/2'		Dacite porphyry with indistinct plagioclase with blurred outlines; some quartz(?) grains with better distinction; mildly chloritized grey-green aphanitic groundmass - oxide (orange to dried blood-brown) on some fracture surfaces; pyrite irregularly distributed on fractures, in irregular disseminated patches with isolated blebs and cakes. Very pale malachite stain at 42' with manganese(?) dendrites on fracture - 1/8" vein with tiny, well-formed quartz crystals at 43 1/2' - epidote (pale) on fractures with pyrite to 43 1/2' - irregular fracture with pyrite and epidote			N

APPENDIX I (cont'd)

Depth		% of Core	Description & Lithology	Mineralization	Dip	No. of Sample
From	To					
			sub-parallel to core axis at 47' - cavities lined with small quartz crystals at 53' - chlorite increases greatly from 54 to 55 3/4' after this rock could well be called a chloritic phyllite - pyrite decreases markedly - recovery very poor 55 3/4' to 70', i.e., 1 1/2 feet of core - malachite stain in 1" piece 3" before 70' marker - malachite stain on pebble-sized piece at 71 3/4' and 75 1/3' - malachite on fractures with manganese(?) at 77' - recovery improves after 76' and rock becomes more competent with few fractures and no oxidized surfaces - occasional less altered "patches" reveal that it is still a highly chloritized dacite - (?) - pyrite is sporadic in distribution but present in some quantity throughout - some pieces of core approach a chlorite schist with quartz eyes.			
105 1/2	117		Abrupt change to a pale green altered rock (dacite?) all grains indistinct except for pyrite which becomes abundant as irregular small blebs and commonly cubes. Irregular 1/2" to 3/4" vein of quartz and aphanitic black mineral at 107 - small spot of malachite at 110.			
117	202		Return to chloritized (but not phyllitic) dacite; partially epidotized; pyrite more scarce and irregular than previously. Chlorite with quartz in vein at 125' at approximately 20° to core axis - epidote on fracture at 145 - chlorite on parallel fracture also at 145 both fractures sub-parallel to core axis. 1/8" vein pyrite and quartz approximately 15° to core axis at 148 - irregular quartz-chlorite vein with large, well-formed pyrite cubes at 158 - pyrite vein 1/8" approximately 35° to core axis at 165'.			

APPENDIX II

STATEMENT OF EXPENDITURES

Field:

Labour		
2 drillers and 2 helpers		
19 days av. \$160/day		\$3,040.00
Accommodations		
76 man days @ \$12/day		912.00
Diamond drill and pump costs		
19 days @ \$65/day		1,235.00
Drill fuel costs		
135 gallons gas @ \$2/gal.		270.00
Mobilization-Demobilization		
3 hours Hughes-500 Helicopter @ \$200/hr.		600.00
60 gallons JP-4 fuel @ \$1.50/gal.		90.00
3.6 hours Bell 206-B Helicopter @ \$270/hr. plus fuel (Sept. 14, 1974)		1,080.00
Twin Otter: 300 miles @ \$1.65/mile (Sept. 14, 1974)		495.00
Diamond drill bits		200.00
Engineering supervision		
C.V. Dyson - 1 day (August 28) @ \$65/day		65.00
	Total Field Expenditures	<u>\$7,987.00</u>

Office:

C.V. Dyson, 2 days, October 16-17, 1974 @ \$65/day		\$ 130.00
Drafting, secretarial, reproductions, miscellaneous		75.00
	Total Office Expenditures	<u>\$ 205.00</u>
	TOTAL	<u>\$8,192.00</u>

