

TOPOGRAPHIC MAP

CLAIMS: BUTTE, GREAT FALLS C.G., HELENA C.G., BEAR, BROTHER  
OWNER: RIO PLATA SILVER MINES LTD. (N.P.L.)  
ATLIN MINING DIVISION

RETURN TO  
**DEPARTMENT OF MINES, AND PETROLEUM RESOURCES**  
VICTORIA, BRITISH COLUMBIA  
V8V 4S2

Department of  
Mines and Petroleum Resources  
ASSESSMENT REPORT  
NO. 5296 MAP

104 11/12

5296

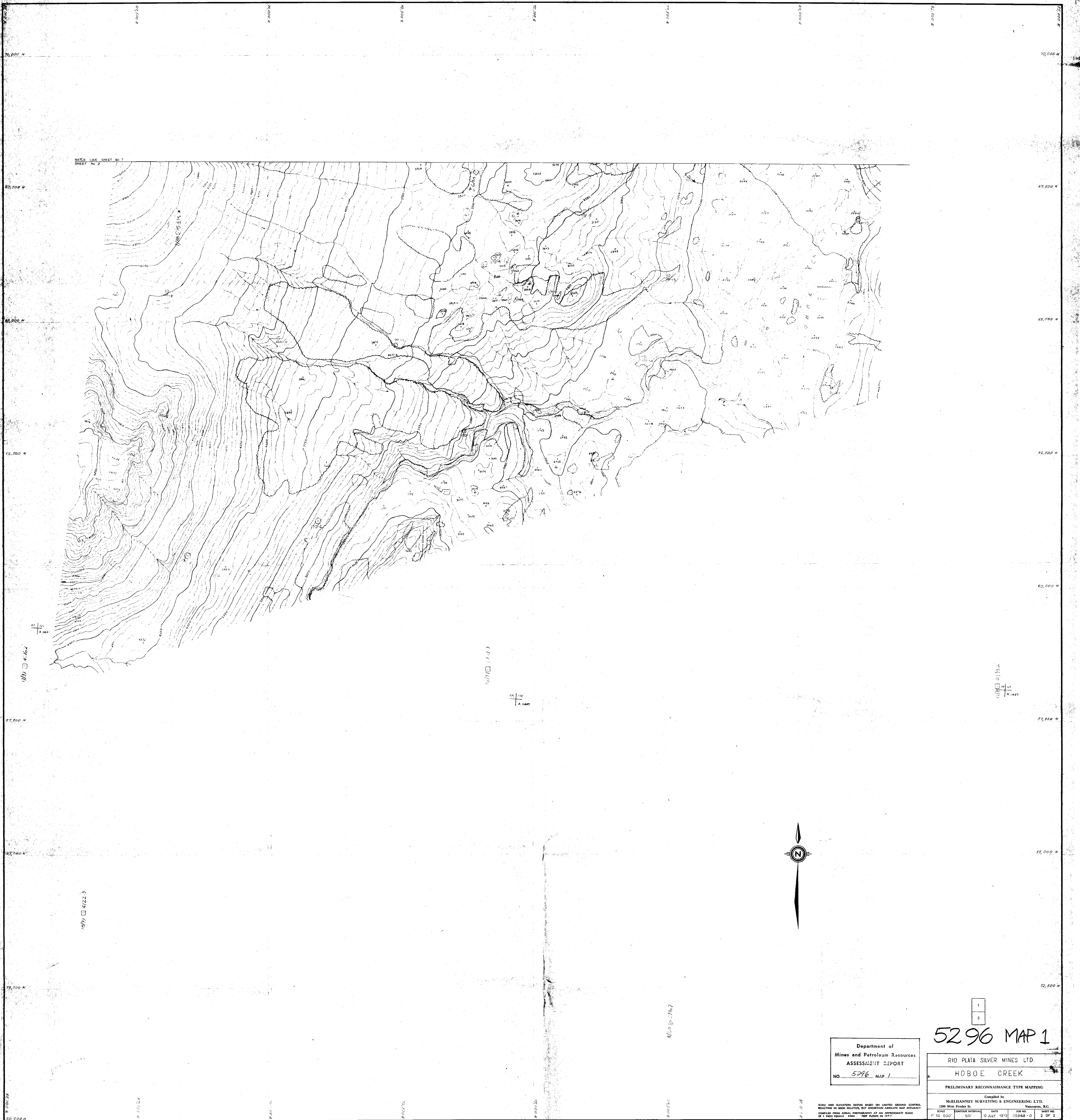


MAPS # 1 & 2 -

RIO PLATA SILVER MINES LTD.

HOBCE CREEK

PRELIMINARY RECONNAISSANCE TYPE  
MAPPING

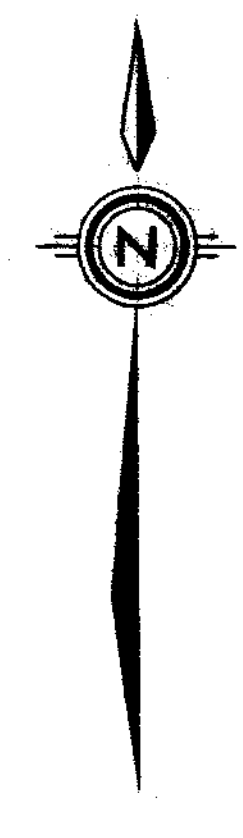


MATCH LINE SHEET No 1  
SHEET No 2

107) □ 4122.3

107) □ 4122.3

107) □ 4122.3

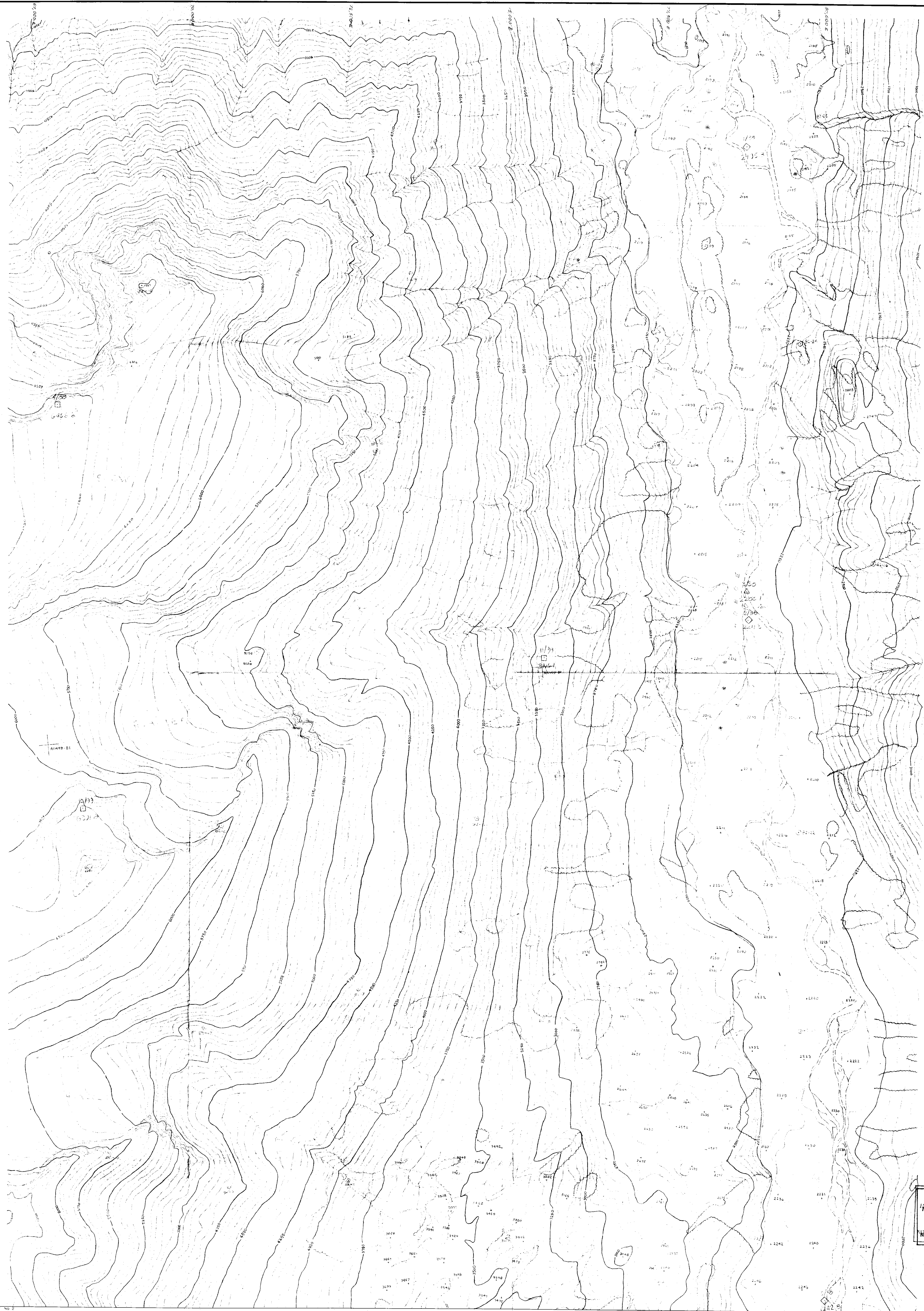


Department of  
Mines and Petroleum Resources  
ASSESSMENT REPORT  
NO. 5296 MAP 1

1 2		<b>5296 MAP 1</b>	
RIO PLATA SILVER MINES LTD.			
HOBEO CREEK			
PRELIMINARY RECONNAISSANCE TYPE MAPPING			
Compiled by McELHANNAY SURVEYING & ENGINEERING LTD. 1206 West Pender St. Vancouver, B.C.			
SCALE	CONTOUR INTERVAL	DATE	SHEET NO.
1" = 10,000'	50'	10 JULY 1973	05296B-0 2 OF 2

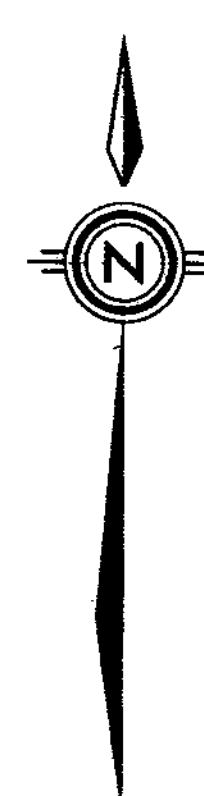
SCALE AND ELEVATION DATUM BASED ON LIMITED GROUND CONTROL. RESULTS IN GOOD RELATIVE, BUT UNIFORM AN ABSOLUTE MAP ACCURACY. COMPILED FROM AERIAL PHOTOGRAPHY AT AN APPROXIMATE SCALE OF 1 INCH EQUALS 1000 FEET PATTERN IN 1957.





9/77  
 121-23

10/79  
 121-23



Department of  
 Mines and Petroleum Resources  
 ASSESSMENT REPORT  
 No. 5296 WARD 2

5296  
 MAP 2

SCALE AND ELEVATION DATUM BASED ON LIMITED GROUND CONTROL  
 MEASUREMENTS RELATIVE, BUT UNCERTAIN, PROSPECT MAP ACCURACY  
 DERIVED FROM AERIAL PHOTOGRAPHY AT AN APPROXIMATE SCALE  
 OF 1 INCH EQUALS 2000 FEET FROM M.T.S.P.

RIO PLATA SILVER MINES LTD.					
HOBEO CREEK					
PRELIMINARY RECONNAISSANCE TYPE MAPPING					
Compiled by MELIHANNEY SURVEYING & ENGINEERING LTD. 100 West Pender St. Vancouver, B.C.					
SCALE	CONTOUR INTERVAL	DATE	JOB NO.	SHEET NO.	
1" TO 500'	50'	10 JULY 1973	05968-0	1 OF 2	

SHEET No 1  
 WHEN LINE SHEET No 2