

# 5308

92I/11W

PERCUSSION DRILLING REPORT

on the

MAP #3-16 MINERAL CLAIMS

RED HILL AREA - ASHCROFT, B.C.

KAMLOOPS MINING DIVISION

---

LATITUDE 50°39' LONGITUDE 120°19'

N.T.S. SHEET No. 92 I/11W

---

BETHLEHEM COPPER CORPORATION

DECEMBER 18, 1974

R. E. Anderson, P.Eng.

Department  
Mines and Petroleum  
ASSESSMENT  
No. 5308 MA

TABLE OF CONTENTS

SECTION A	-	SUMMARY OF WORK
		Introduction
		Location and Access
		Topography
		Percussion Drilling
		Summary of Costs
SECTION B	-	STATEMENT OF EXPENDITURES
		Contractor's Expenditure
		Bethlehem Costs
SECTION C	-	DRILL HOLE LOGS and ASSAYS
SECTION D	-	SCHEDULE OF MINERAL CLAIMS
SECTION E	-	LIST OF ILLUSTRATIONS

## SECTION A - SUMMARY OF WORK

### Introduction

The Red Hill area has long been an exploration target due to the presence of several prominent gossans containing local minor copper mineralization. During the 1960's Noranda Exploration Company conducted a rotary and diamond drilling program and in 1970 Ducanex conducted further diamond and percussion drilling, but both these programs were confined to the west side of the Red Hill.

The "MAP" Group of claims were staked by Bethlehem in early December 1973 and the exploration program planned at that time was to consist of bedrock sampling, soil sampling and geological mapping. This work was carried out in early 1974, and, although no significant targets were developed, it was decided to test the covered areas of the property by percussion drilling.

### Location and Access

The property is located some 11 miles south of Cache Creek, B.C. on the west side of the Thompson River Valley. The geographic co-ordinates are 50°39' latitude and 121°19' longitude. Access is by a dirt road leading from Trans-Canada Highway No. 1.

### Topography

The thirty-two claims lie on the eastern slope of the Red Hill, an elongated north-south trending hill which rises to a height of 2300' A.S.L. The Thompson River, in the valley to the east of the property, is at an elevation of 900' A.S.L. The elevations on the property range from 1300' - 2000'. The general topography is moderate with relatively gentle slopes.

Forest cover is comprised of wide spaced Ponderosa Pine which are generally above the 1500-foot elevation. Below this elevation, sage brush and various grasses predominate.

Percussion Drilling

Josco Mining Co. Ltd. of Kamloops was the drilling contractor employed on the property and they utilized an Atlas Copco Model BBE-57-01 truck-mounted percussion unit. The planned program of three holes was completed between Oct. 9 and 16, 1974. Total footage drilled was 580 feet, the details of which are set out in the following table:-

<u>Hole No.</u>	<u>Dip</u>	<u>Elevation</u> (Approx.)	<u>Overburden</u>	<u>Sample</u> <u>Interval</u>	<u>Total</u> <u>Depth</u>
MAP 74-1	-90°	1600	60	290	350
MAP 74-2	-90°	1490	60	60	120
MAP 74-3	-90°	1300	110	-	110
			—	—	—
			230	350	580

All three holes were planned initially to probe to 350' but hole No. 74-2 was halted at 120' due to shattered ground and subsequent circulation problems while hole No. 74-3 was abandoned at 110' due to extreme pinching.

Summary of Costs

Total costs incurred during this drilling program were \$2807.62 of which 75.5% or \$2120.12 represents expenditures for contractors and 24.5% or \$687.50 represents expenditures directly within the Bethlehem organization.

Respectfully submitted,

*R. E. Anderson*

R. E. Anderson, P.Eng.  
Exploration Manager

SECTION B - STATEMENT OF EXPENDITURES  
(Oct. 1, 1974 - Oct. 31, 1974)

1. CONTRACTORS (see accompanying invoices)	
(a) JOSCO MINING CO. LTD.	\$2053.00
- Percussion drilling contractor	
(b) ALTAIR DRAFTING SERVICES	\$ 18.12
- Drafting and Printing	
(c) BETHLEHEM LABORATORY	\$ 49.00
- Assaying	
	<hr/>
Sub-total	\$2120.12
2. BETHLEHEM COSTS	
(a) Vehicle for Project Supervisor	\$ 50.00
5 days @ \$10.00/day	
(b) Supervision	\$ 637.50
- R. E. Anderson, P.Eng.	\$280.00
Exploration Manager, 2.0 days	
@ \$140.00/day (accumulated during	
Oct. 1-31, 1974)	
- E. Andersen - Property Agent	\$ 70.00
1.0 days @ \$70.00 (accumulated	
during Oct. 1-31, 1974)	
- J. G. Collins - Project	
Supervisor	\$287.50
5 days @ \$57.50/day (Oct. 9-11,15,16, 1974)	
Sub-total	\$ 687.50
TOTAL EXPENDITURE	\$2807.62
TOTAL CLAIM YEARS	14

VENDOR	DATE		INVOICE NUMBER	DESCRIPTION	INVOICE AMOUNT		NET AMOUNT
	DAY	MO					
1980	12	11	121174	INVOICE	2,053.00	.00	2,053.00
1980	12	11	121174	INVOICE	2,243.00	.00	2,243.00
JOSCO MINING CO LTD						TOTAL	4,296.00

DETACH AND RETAIN



BETHLEHEM COPPER CORPORATION LTD.

Suite 2100 Guinness Tower, 1055 West Hastings Street, Vancouver, B.C. V6E 2H8

CONTROL NO.

06422

BANK OF MONTREAL  
MAIN BRANCH  
1-4 VANCOUVER, B.C.

EXACTLY \*\*\*\*4,296 DOLLARS AND 00 CENTS

\$4,296.00

NOVEMBER 15 1974

BETHLEHEM COPPER CORPORATION LTD.  
LEAD OFFICE ACCOUNT.

JOSCO MINING CO LTD  
P O BOX 665  
KAMLOOPS B C

PER

NOT NEGOTIABLE

PER

KGRV

12-7523  
579-9127

JOSCO MINING CO. LTD.  
P. O. Box 665, Kamloops, B.C. V2C 5L7

Nov. 12, 1974

Bethlehem Copper Corp. Ltd.  
2100 - 1055 W. Hastings St.  
Vancouver 1, B. C.

Dear Sirs: Attention: Mr. Jon Colling

Following is a statement of our account for percussion drilling on the  
Map property south of Ashcroft, B. C., during the period Oct. 9 - 16, 1974:

Hole No.	Bedrock Depth	Feet Cased	Total Footage Drilled	Water Truck
Map 74 - 1	50 ft.	50 ft.	350 ft. ✓	1 shift
Map 74 - 2	60 ft.	80 ft.	120 ft. ✓	1 shift
Map 74 - 3	No bedrock	110 ft.	110 ft. ✓	1 shift
Totals			580 ft. ✓	3 shifts ✓

Drilling Charges: 580 ft. @ \$ 2.85 per ft. .... \$ 1653.00 ✓

Extra charge for Map 74 - 3 ( over 100 ft. casing )  
110 ft. @ \$ 0.25 per ft. .... 27.50 ✓

Water Truck Charges: 3 shifts @ \$ 40.00 per shift ..... 120.00 ✓

Mobilization Charges:

Lowbed charges per attached .....	\$ 112.50	
Labor charge moving drill		
14 hrs. @ \$ 7.00 per hr. ....	98.00	✓
Labor charge moving water truck		
6 hrs. @ \$ 7.00 per hr. ....	42.00	✓
Total mobilization charge .....	\$ 252.50	252.50 ✓

Total amount due \$ 2053.00 ✓

Yours very truly

John W. Scott  
Josco Mining Co. Ltd.

Chge 11-944

*ote for Payment  
011-944 \$ 2053.00  
RET*

*O.K. for Payment  
Jon Colling*



BETHLEHEM COPPER CORPORATION LTD.

Accounting Department  
Assay Department

DATE: Oct 17, 1974

RE HEAD OFFICE ASSAY CHARGES

TAG No.	ELEMENT										
	Cu	CuO	Mo	MoS <sub>2</sub>	Au	Ag	Pb	Zn	Ni		
14-1 60-330	29										
TOTAL	29										

FOR HEAD OFFICE USE

100 Cu @ 2.00 =	200.00
Plus 30%	60.00
	140.00

BETHLEHEM COPPER CORPORATION LTD.

Accounting Department  
Assay Department

DATE: Oct 23, 1974

RE HEAD OFFICE ASSAY CHARGES

SINGLE  
WARRANT  
CONTRACT

TAG No.

MAP 74-2 60-120  
842-11

TAG No.	ELEMENT										
	Cu	CuO	Mo	MoS <sub>2</sub>	Au	Ag	Pb	Zn	Ni		
6											
TOTAL	6										

TOTAL

PROJECT No.

FOR HEAD OFFICE USE

OE  
OE  
OE

ORIGINAL 3 FOR SHIPPER - EXPEDIENTIUM

41.40

ENDOR	DATE		INVOICE NUMBER	DESCRIPTION	INVOICE AMOUNT		NET AMOUNT
	DAY	MO					
	31	10	3110/4	INVOICE	1,916.00	.00	1,916.00
0911	31	10	3110/4	INVOICE	1,005.85	.00	1,005.85
\$ 2.12 \$ 16.00 <hr/> \$ 18.12 <hr/>							
ALTAIR DRAFTING SERVICES						TOTAL	2,921.85

DETACH AND RETAIN



# BETHLEHEM COPPER CORPORATION LTD.

Suite 2100 Guinness Tower, 1055 West Hastings Street, Vancouver, B.C. V6E 2H8

CONTROL NO.

## 06310

BANK OF MONTREAL  
 MAIN BRANCH  
 1-4 VANCOUVER, B.C.

1972 EXACTLY **2,921 DOLLARS AND 85 CENTS**

**\$2,921.85**

**OCTOBER 31 1974**

BETHLEHEM COPPER CORPORATION LTD.  
 HEAD OFFICE ACCOUNT.

ALTAIR DRAFTING SERVICES  
 LIMITED

PER \_\_\_\_\_

**NOT NEGOTIABLE**

PER \_\_\_\_\_

*Lam*

*RW*



# Altair Drafting Services

Acct of Oct / 74

Project	Hours	COST (\$8/hr)
960-001	10	80.00
960-005	4	32.00
960-006	5.5	44.00
960-007	3	24.00
960-008	15	120.00
→ 960-011	2	16.00
960-017	27.5	220.00
960-024	1	8.00
960-029	2.5	20.00
960-030	21.5	172.00
960-033	82	656.00
960-034	10	80.00
960-035	2	16.00
960-036	14	112.00
960-037	25.5	204.00
320-005	14	112.00

HGE

OK  
H2

**SECTION C - DRILL HOLE LOGS and ASSAYS**

## DRILL HOLE LOG

## BETHLEHEM COPPER CORPORATION LTD.

SHEET No. 1

Property	RED HILL	Hole No.	MAP-74-1	Bearing		Elevation	1600'	Logged by S. Marr			
District	Kamloops M.D.	Length	350'	Dip	Vertical	Overburden	60'	Date 28th November 1974			
Commenced	10th October 1974	Latitude	240000 N	Hor. Comp.		Recovery					
Completed	10th October 1974	Departure	-75150 E	Vert. Comp.		Purpose					

DESCRIPTION	SULPHIDES	OXIDES	OTHERS	FROM	TO	SAMPLE No.	% Cu.	% Mo.	Oz Au.	Oz Ag.	% RECOV
Impure limestone with either finely disseminated pyrite or pyrite in blebs.	Py Tr cpy	Tr mal		60	70		.017				
Impure limestone with either finely disseminated pyrite or pyrite in blebs.	"			70	80		.014				
Impure limestone with either finely disseminated pyrite or pyrite in blebs.	"			80	90		.010				
50% chips, impure limestone as above; rest is a green rock (altered volcanic?) which is mafic looking with some dark chloritic spots; some quartz and sericite also present; occasional pyrite and specks of chalcopyrite.	Py Tr cpy			90	100		.011				
Rock chips mainly small green chips (more chloritic than above) but also a large number of limestone chips.	Py Specks cpy			100	110		.009				
Rock chips small; rock types as 100-110.	"			110	120		.008				
Very small chips.				120	130		.009				
Chips larger. Green chips have less chlorite and more quartz. Limestone also present, occasionally greenish.	"			130	140		.009				
More limestone than green chips--some are greenish as above. Green chips similar to those at 130-40.	Py			140	150		.008				
Very fine chips. Both types present.				150	160		.010				
160 - E.O.H. Finely ground. The few coarse chips at 320-330 are similar to above; i.e., both limestone and green chips are present.	Py			160	170		.008				

## DRILL HOLE LOG

## BETHLEHEM COPPER CORPORATION LTD.

SHEET No.2

Property RED HILL

Hole No. MAP-74-1

Logged by S. Marr

Date 28th November 1974

DESCRIPTION	SULPHIDES	OXIDES	OTHERS	FROM	TO	SAMPLE No.	% Cu.	% Mo.	Oz Au.	Oz Ag.		% RECOV.
				170	180		.007					
				180	190		.010					
				190	200		.009					
				200	210		.008					
				210	220		.008					
				220	230		.008					
				230	240		.007					
				240	250		.007					
				250	260		.007					
				260	270		.008					
				270	280		.008					
				280	290		.009					
				290	300		.007					









SECTION D - SCHEDULE OF MINERAL CLAIMS

BETHLEHEM COPPER CORPORATION LTD.

MINERAL CLAIMS

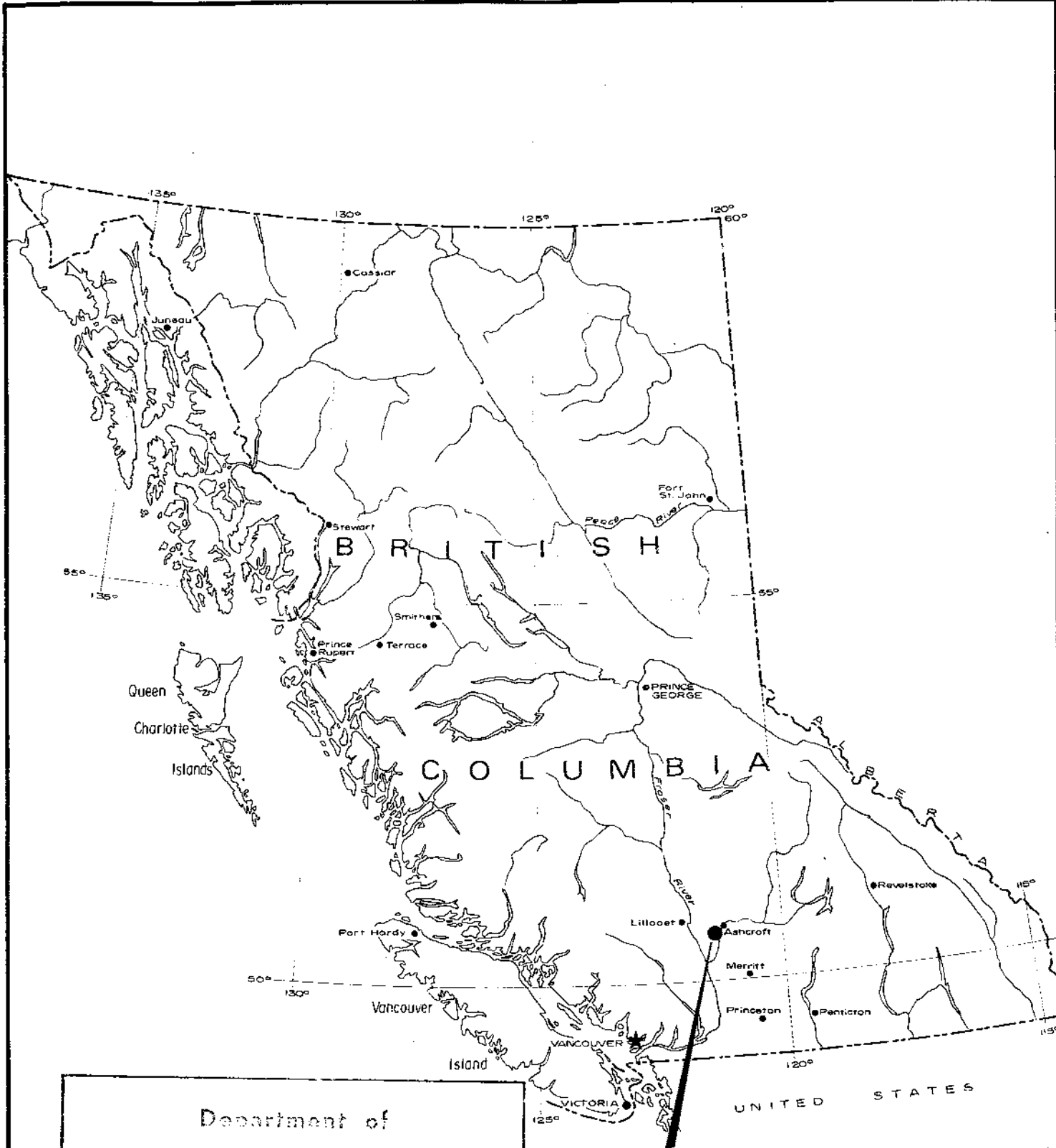
Property: Red Hill

Mining Division: Kamloops

<u>Name of Claim</u>	<u>Record Number</u>	<u>Metal Tag Number</u>	<u>Date Recorded</u>	<u>Expiry Date</u>
MAP #3	127339R	363203M	Dec. 18, 1973	Dec. 18, 1974
MAP #4	127340R	363204M	"	"
MAP #5	127341R	363205M	"	"
MAP #6	127342R	363206M	"	"
MAP #7	127343R	454681M	"	"
MAP #8	127344R	363248M	"	"
MAP #9	127345R	363249M	"	"
MAP #10	127346R	363250M	"	"
MAP #11	127347R	363251M	"	"
MAP #12	127348R	363252M	"	"
MAP #13	127349R	363253M	"	"
MAP #14	127350R	363254M	"	"
MAP #15	127351R	363255M	"	"
MAP #16	127352R	363256M	"	"

SECTION E - LIST OF ILLUSTRATIONS

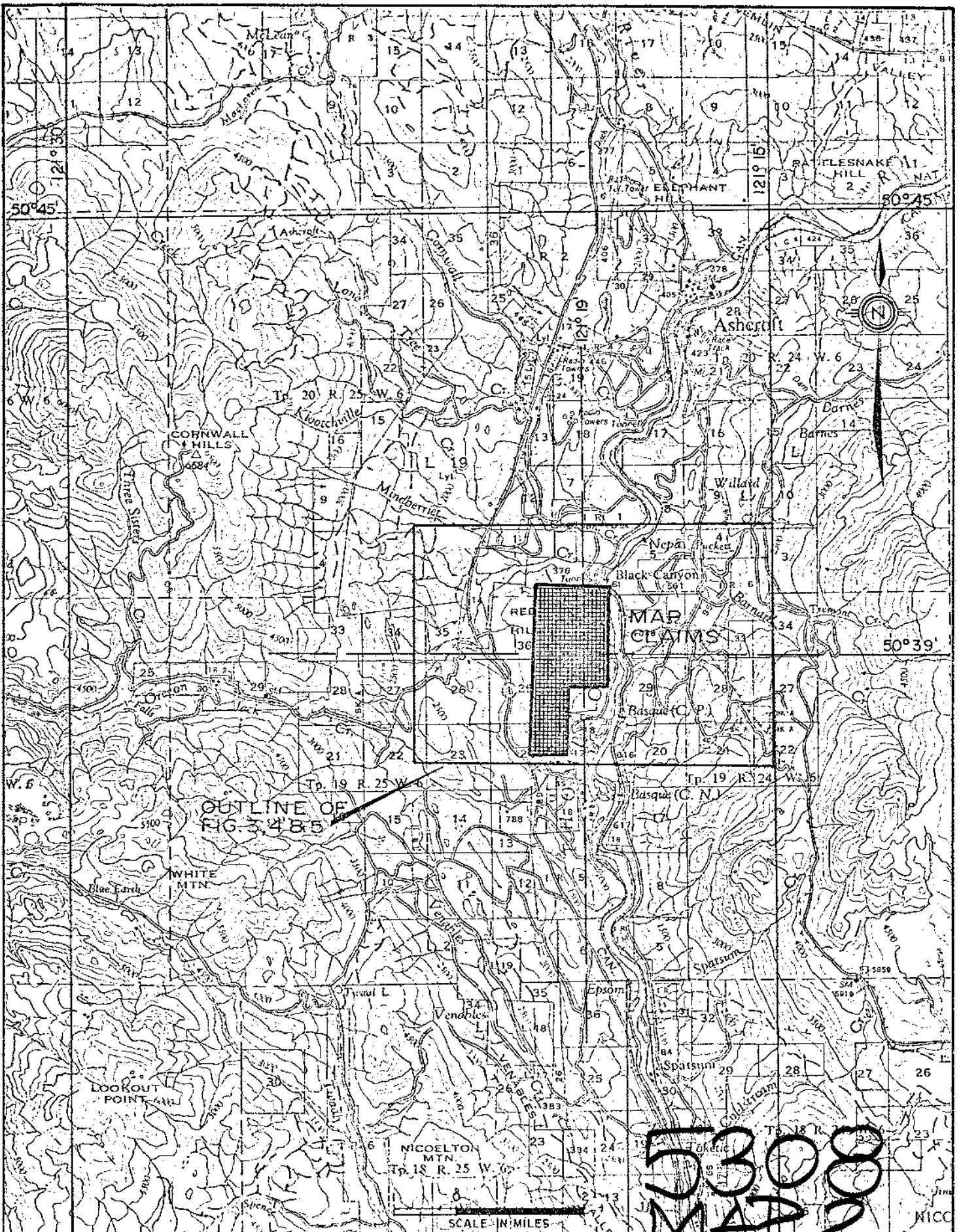
<u>DESCRIPTION</u>	<u>FIGURE NO.</u>
#1 B.C. LOCATION PLAN	1
#2 LOCATION PLAN - Scale 1" = 2 miles	2
#3 MINERAL CLAIMS and LAND STATUS - Scale 1" = 1000'	3
#4 TOPOGRAPHY - Scale 1" = 1000'	4
#5 GEOLOGY and DRILL HOLE PLAN - Scale 1" = 1000'	5



Department of  
 Mines and Petroleum Resources  
 APPENDIX REPORT  
 NO. 5308 MAP #1

PROPERTY  
 5308 M1

BETHLEHEM COPPER CORPORATION  
 RED HILL PROJECT  
 LOCATION PLAN



OUTLINE OF  
FIG. 3485

MAP  
CLAIMS

5308  
MAP 2

SCALE - 1" = 2 MILES

DATE REVISED	BY	DEPT. - EXPLORATION
		DRAWN BY -
		CHECKED -
		APPROVED -
		DATE - MAR. / 1974
		SCALE - 1" = 2 miles

**Bethlehem  
Copper**

CONSOLIDATED  
GOLDEN  
BRITISH COLUMBIA

RED HILL PROJECT LOCATION PLAN	
FILE NUMBER -	DRAWING NUMBER -
N.T.S. 92I / 11f	FIG. 2



Department of  
Mines and Petroleum Resources  
ASSESSMENT REPORT  
NO. 5308 MAP #3

5308  
MAP 3

FIG. 3 to accompany Percussion  
Drilling Report on the MAP 3-16  
M.C.'s, RED HILL AREA, Kamloops  
Mining Division, Dec. 18, 1974 -  
R. E. Anderson, P.Eng.

*R. E. Anderson*

NOTE: Origin of Co-ordinates -50° Lat.  
121° Long.

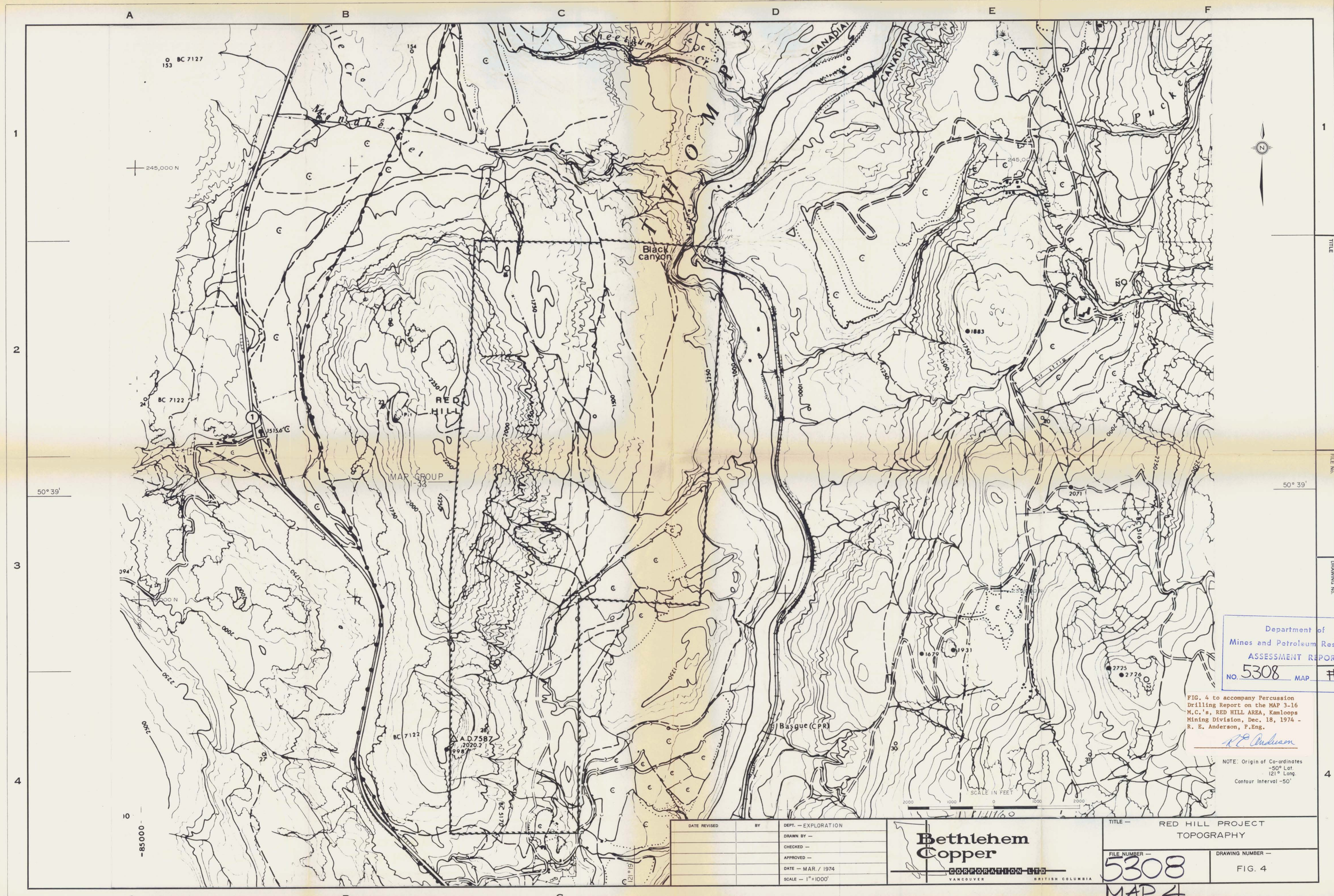


DATE REVISED	BY	DEPT. - EXPLORATION
		DRAWN BY - Altair/m.k.
		CHECKED - E.A.
		APPROVED -
		DATE - MAR / 1974
		SCALE - 1" = 1000'



TITLE - RED HILL PROJECT MINERAL CLAIMS & LAND STATUS	
FILE NUMBER -	DRAWING NUMBER -
	FIG. 3





Department of  
Mines and Petroleum Resources  
ASSESSMENT REPORT  
NO. 5308 MAP #4

FIG. 4 to accompany Percussion  
Drilling Report on the MAP 3-16  
M.C.'s, RED HILL AREA, Kamloops  
Mining Division, Dec. 18, 1974 -  
R. E. Anderson, P.Eng.

*R.E. Anderson*

NOTE: Origin of Co-ordinates  
-50° Lat.  
121° Long.  
Contour Interval -50'

DATE REVISED	BY	DEPT. - EXPLORATION
		DRAWN BY -
		CHECKED -
		APPROVED -
		DATE - MAR. / 1974
		SCALE - 1" = 1000'

**Bethlehem  
Copper**  
CORPORATION LTD.  
VANCOUVER BRITISH COLUMBIA

TITLE - RED HILL PROJECT TOPOGRAPHY
FILE NUMBER - 5308
DRAWING NUMBER - FIG. 4

MAP 4

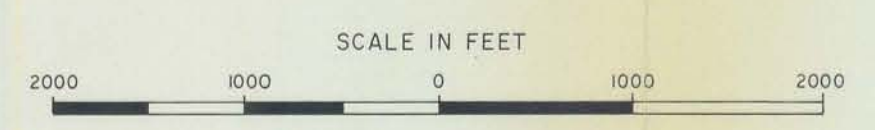


- LEGEND**
- JURASSIC
    - 3 Sandstone, Brown Weathered
  - UPPER TRIASSIC
    - 2 Quartz Diorite, fine grained
  - PERMIAN & EARLIER
    - 1 Volcanics, Quartzite, Schist, Minor Limestone
  - Gossan
  - Outcrop
  - Bedding, Foliation
  - Fault, Assumed
  - X Mineralization or Adit
  - Soil Sample P.P.M. Cu
  - Bedrock Sample P.P.M. Cu
  - Dirt Road or Trail
  - Percussion Drill Hole

Department of  
Mines and Petroleum Resources  
**ASSESSMENT REPORT**  
NO. 5308 MAP #5

FIG. 5 to accompany Percussion  
Drilling Report on the MAP 3-16  
M.C.'s, RED HILL AREA, Kamloops  
Mining Division, Dec. 18, 1974 -  
R. E. Anderson, P.Eng.  
*R. E. Anderson*

NOTE: Origin of Co-ordinates -50° Lat.  
121° Long.



DATE REVISED	BY	DEPT. - EXPLORATION
Oct. 30, 1974	Altair	
		CHECKED - E.A.
		APPROVED -
		DATE - MAR. / 1974
		SCALE - 1"=1000'



TITLE - RED HILL PROJECT GEOLOGY & DRILL HOLE PLAN	
FILE NUMBER - <b>5308</b>	DRAWING NUMBER - FIG. 5

**MAPS**