

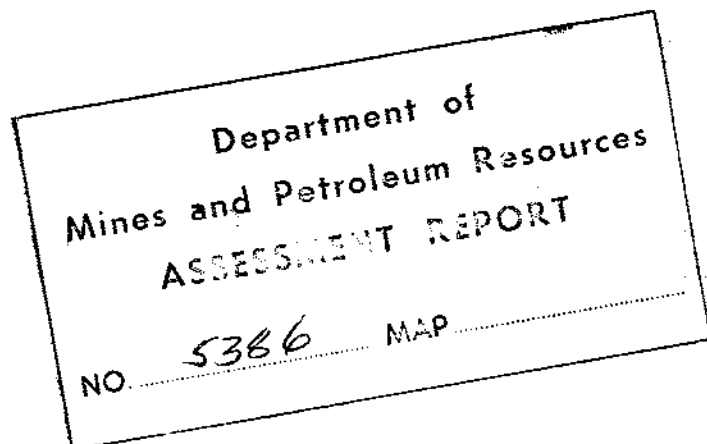
1974 ASSESSMENT

WORK

Les #1-4 #36443 - #36445

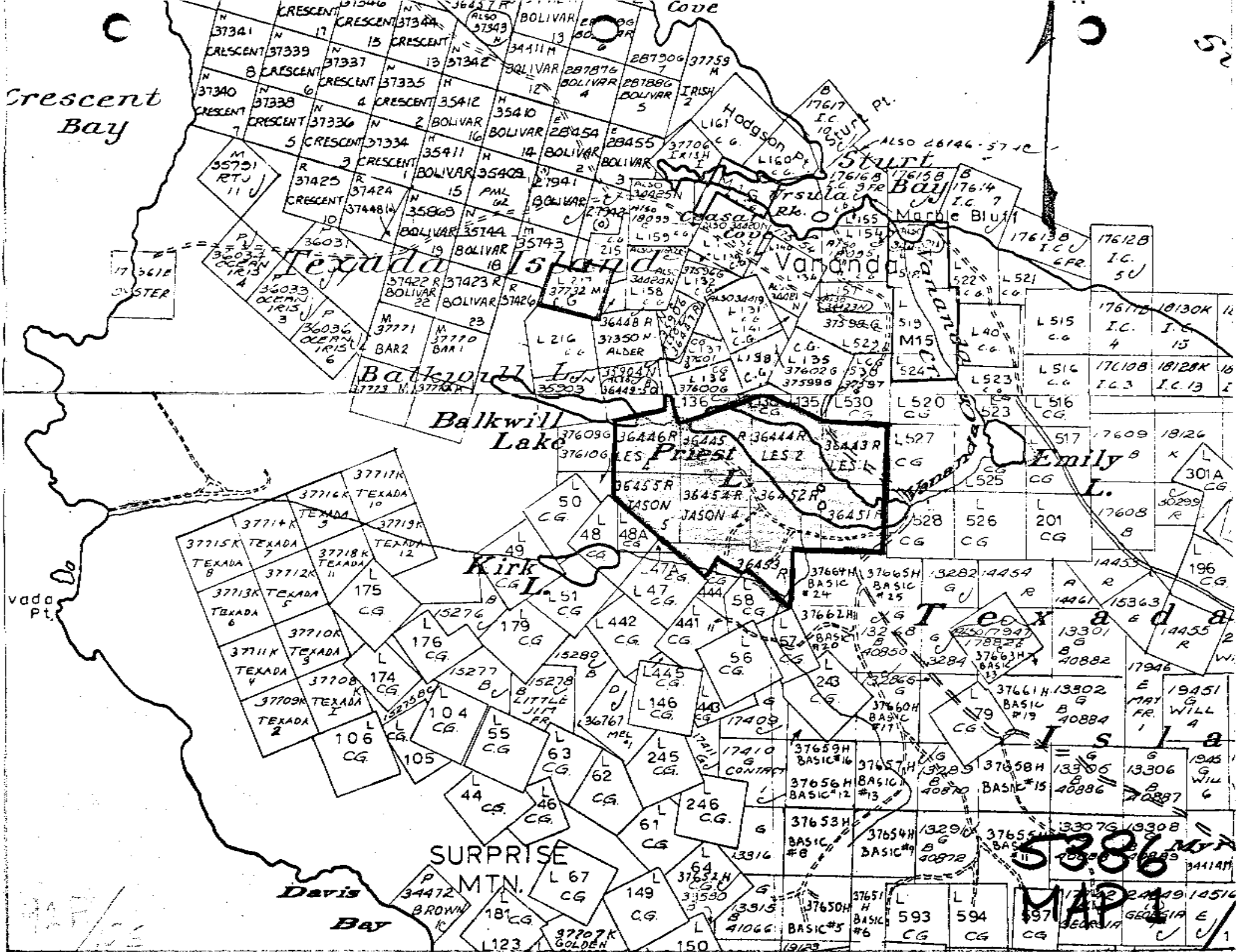
Jason #1-5 #36451 - #36455

- #1 1. Maps and illustrations
2. Type of work - Diamond drilling
3. Itemized cost statement
4. Drilling report
5. Conclusion



1. MAPS AND ILLUSTRATIONS

Crescent Bay



5386
 MAP

3. ITEMIZED COST STATEMENT

STANLEY L. BEALE

- a. November 13 - 19 1974.
- b. \$75.00 per day \$525.00
- c. Room and board \$22.00 per day \$154.00
- d. Pickup truck \$15.00 per day
plus gas \$115.00
- Vancouver - Texada Island re-
turn \$ 60.00
- e. Non-applicable
- f. Non-applicable
- g. Non-applicable
- h. \$25.00
- i. Rental of chain saw \$25.00
Rental of drill and access- \$600.00
ories

JIM BRENNAN

- a. November 14 - 15 1974
- b. \$75.00 per day \$150.00
- c. through i. Non-applicable

RAYMOND WATERS

- a. November 16 - 19 1974
- b. \$70.00 per day \$280.00
- c. through i. Non-applicable

4. DRILLING REPORT

HOLE "A" 65 feet

1 - 10 feet	Diorite	Solid ground
10 - 20 feet	Diorite	Broken ground
20 - 30 feet	Diorite/Limestone	Broken ground, poor recovery
30 - 40 feet	Diorite/Copper traces	Good recovery
40 - 50 feet	Diorite	Good ground
50 - 60 feet	Diorite	Some fractures, moderate recovery
60 - 65 feet	Diorite	Good ground

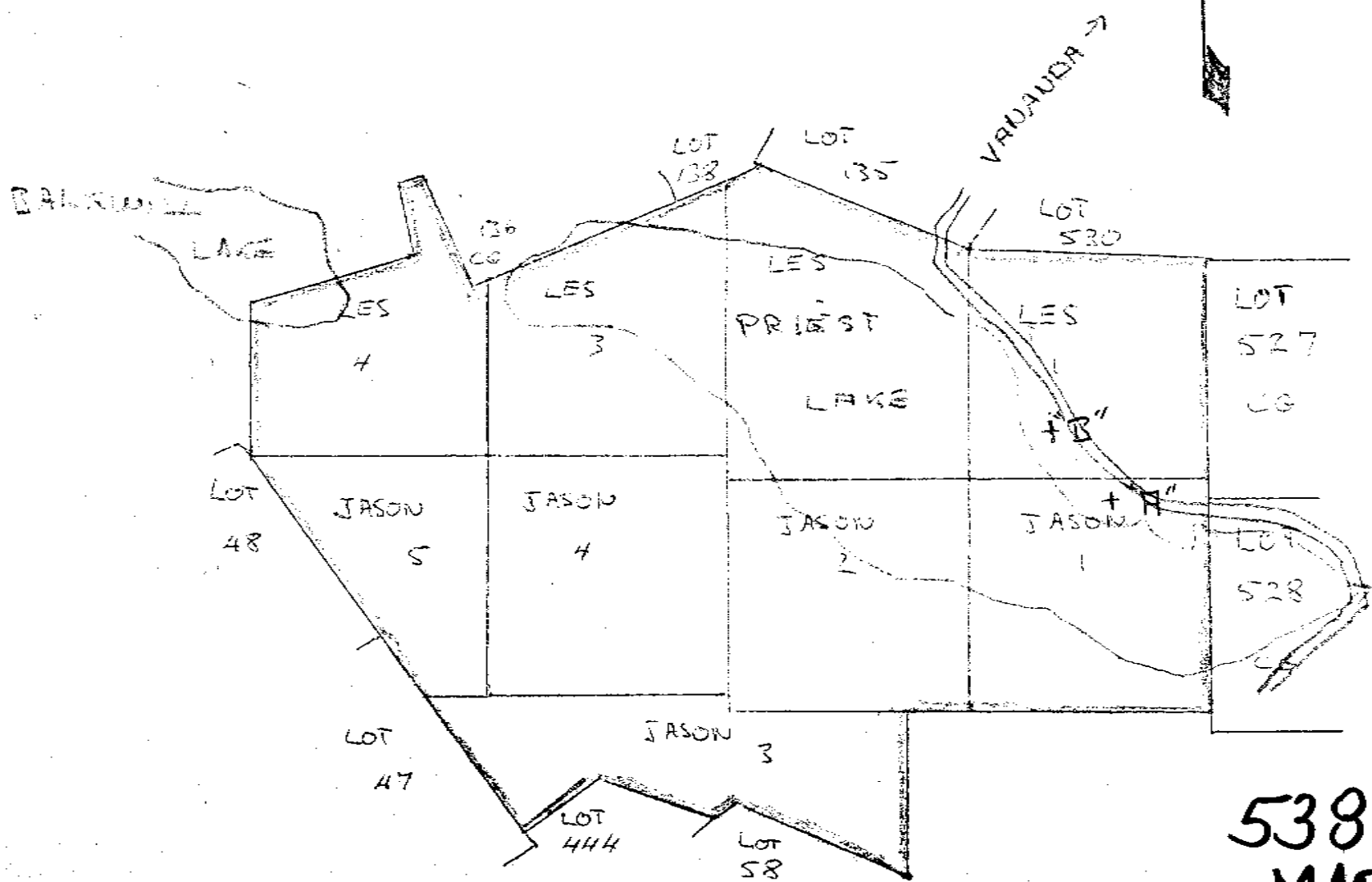
HOLE "B" 45 feet

1 - 10 feet	Diorite	Solid ground
10 - 20 feet	Diorite	Broken, poor recovery
20 - 30 Feet	Diorite	Broken, fractured
30 - 40 Feet	Diorite	Fractured, moderate recovery
40 - 45 feet	Diorite	Fractured ground

Stanley L. Seal
Five Years Prospecting

"C"

COPPER



5386
MAP 2

+ DRILL COLLARS

1" = 1000'

D.

- i) Inclination of hole
- ii) Core diameter
- iii) Elevation

Vertical - 90°

1 Inch

Approximately 200
feet

E. Core Storage

2325 Dyke Road
Richmond, British Columbia

5. CONCLUSION

Further drilling should be attempted to a greater depth. Concentrating closer to the limestone, possibly running diagonal cores through both types of rock.
