

J/W -1

# VAN SILVER EXPLORATIONS LTD.

TELEPHONE  
(604) 687-4150

(N. P. L.)  
501-409 Granville Street,  
XXXXXX WEST HASTINGS STREET  
VANCOUVER 1, B. C.

# 5406

## DRILLING REPORT.

# 92J/3E

February 20, 1975.

<p>Department of Mines and Petroleum Resources ASSESSMENT REPORT</p> <p>NO. <u>5406</u> MAP.....</p>
--

MAPS  
#1 Claim Location  
#2 Claim Location.

ITEMIZED VALUATION OF WORK PERFORMED.

(a) Period Worked:

Twenty (20) days of supervision from December 31, 1974 to January 19, 1975.

Three days (3) for D6 Caterpillar Bulldozer and operator December 28, 29, 30, 1974.

(b) Cost of Work Performed:

Cost of supervision for 20 days x \$75.00	=	\$1,500.00
Cost of Bulldozer and operator 24 hrs. x \$20	=	\$ 480.00
Cost of 4 wheel-drive rental and transportation to and from claims for 20 days	=	\$ 490.00
Cost of food and accomodation for 20 days	=	\$ 500.00

(c) Cost of Drilling:

368' of BQ diamond Drilling @\$9.00	=	\$3,312.00
-------------------------------------	---	------------

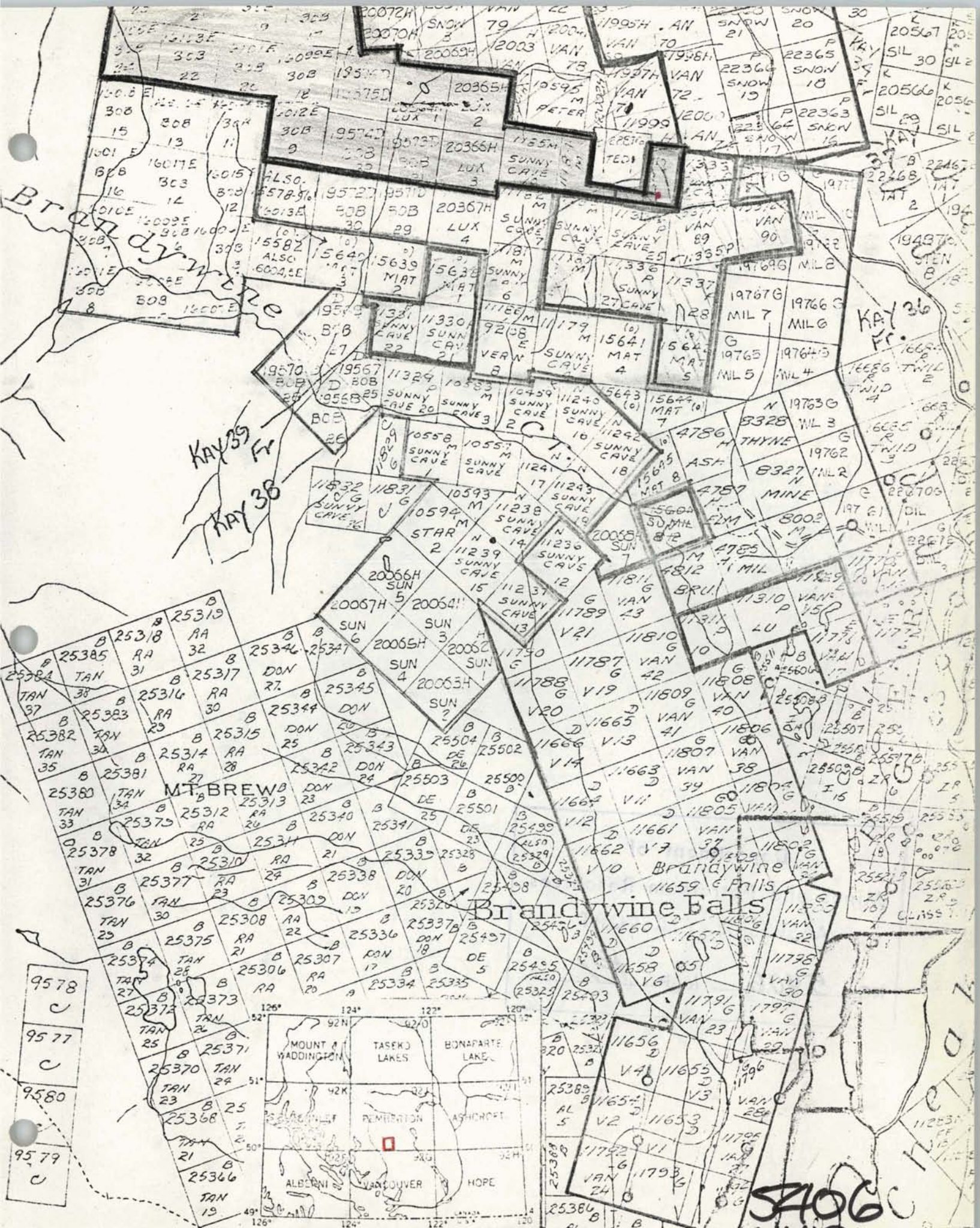
---

Total cost for 20 day period	=	\$6,282.00
------------------------------	---	------------

---

LOCATION OF CORE STORAGE.

Core is stored in Vancouver at 1661 Victoria Drive.



KAY 39 Fr  
KAY 38

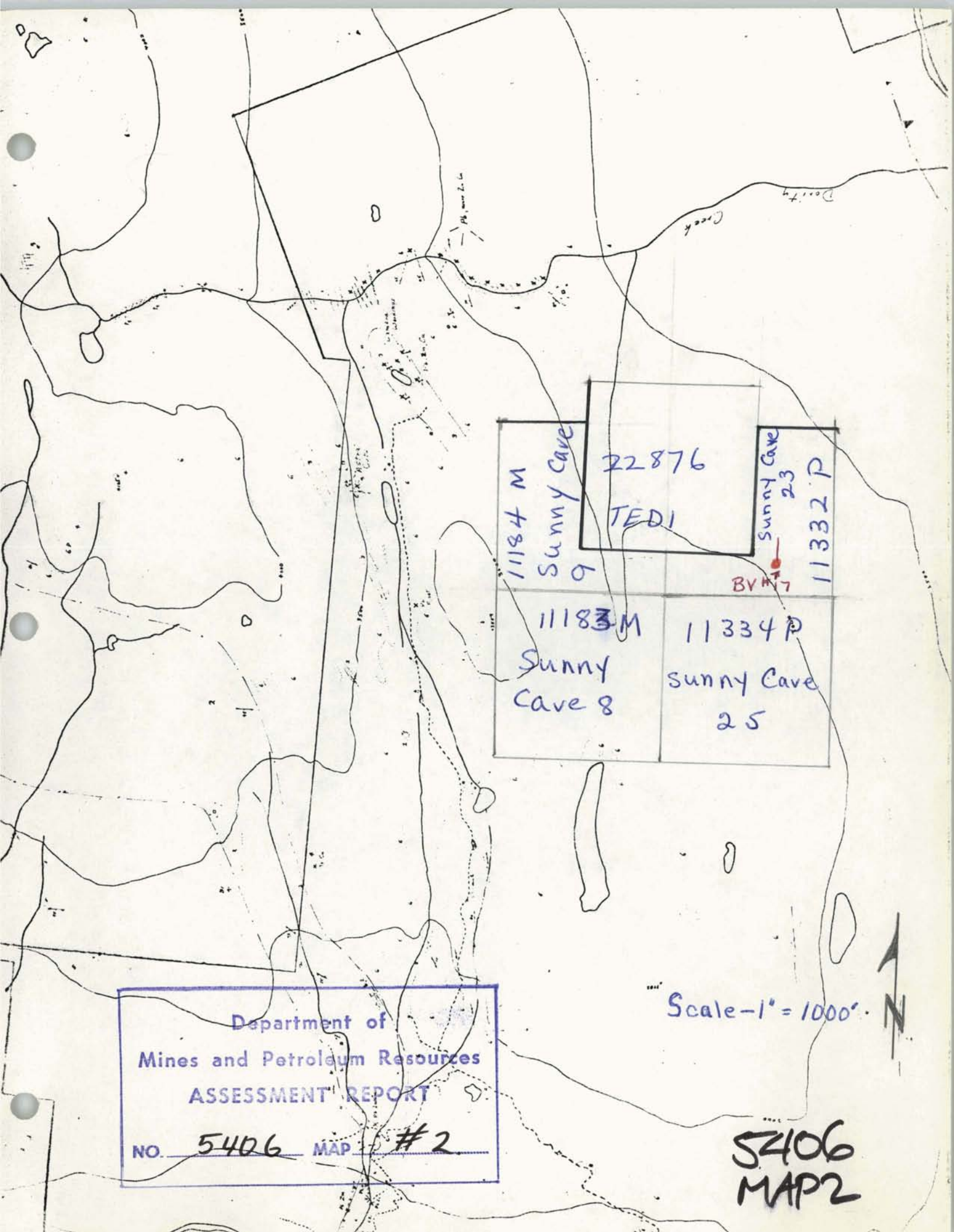
MT. BREW

Brandywine Falls

S106  
MAP 1

□ Claim area  
○ Drill holes

□ Group Outline



Department of  
Mines and Petroleum Resources  
ASSESSMENT REPORT  
NO. 5406 MAP #2

Scale - 1" = 1000'

5406  
MAP 2

Van Silver Explorations Ltd.

Property VAN SILVER EXPLORATIONS

Sheet No. 1

Hole No. BV#17

Project No. N.T.S.

Core Size: BQ

Logged by: R.L.R.

Lat. 199 + 64N

Elev. 3410 (approx)

Dip -45°

Collared

Dep. 200 + 77E

Depth 368

Bearing 37°

Completed

ASSAYS

Footage	Rec'y	Rock Type/Alteration	Graphic Log	Mineralization/Structure	% Sulfides	Sample No.	Lt.				
0 - 3		Casing									
3- 58		Grey green med to f.gr. Andesite, many qtz-carb str. Core badly broken especially 16-17, 18-22, 26-30, 57-58.		Epidote in str. & patches increasing from 17 to end of section. Some rusty fractures.							
58-72.5		Sim to above but somewhat coarser grained.									
72.5-113		F.gr. grey green andesite. Numerous unmineralized narrow qtz-carb str. Broken 75, 76-77, 83, 90, 95 (Rusty, vuggy fracture).		Very sparse fine py.							
113-119.5		Very f.gr., grey-green dacite.		Occas. fine sulph.							
119.5-120.5		Lighter grey volc (dacite) f. gr.									
120.5-122		F. gr. acid volc frag.- light grey. Banding at 70°-80° to the core axis.		Some sulph, including fine galena. Considerable brown limonite (probably along open fractures)							
122-140		Grey, f. gr. dacite, occas. brecciated sections.----- (breccia at 127, 128, 129, 131, 133, 134, 137, 140. Core Broken 136.9-137 & 138).		These areas often contain fair galena, py & minor sph.							



