

27
5 476

Geology and Geochemistry of
Mitch, Ray, Ted, Patty and Ran
Mineral Claims, Sulphurets Creek
Property, 56° 30'N, 130° 15'W,
Unuk River Area, Skeena Mining
Division, British Columbia.

An Assessment Report on 1974
Program on New Mitch and Mitch
No. 12 Claim Groups.

10413/8 F 7 W, 4 F 7 W

by Ed. Kruckowski
Erik Ostensoe

for Granduc Mines, Limited (N.P.L.)
January 31, 1975

Ed Kruckowski
Erik A. Ostensoe

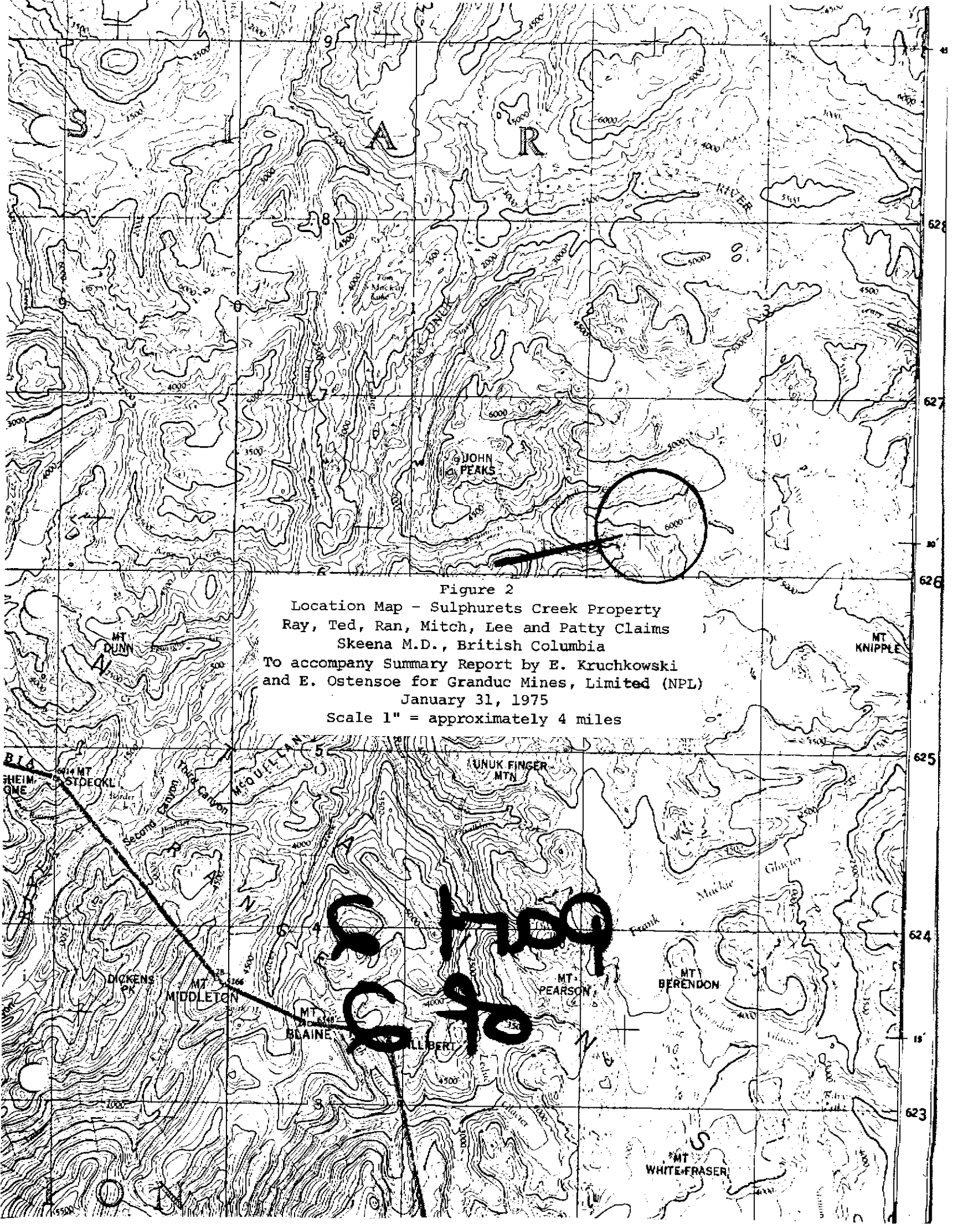
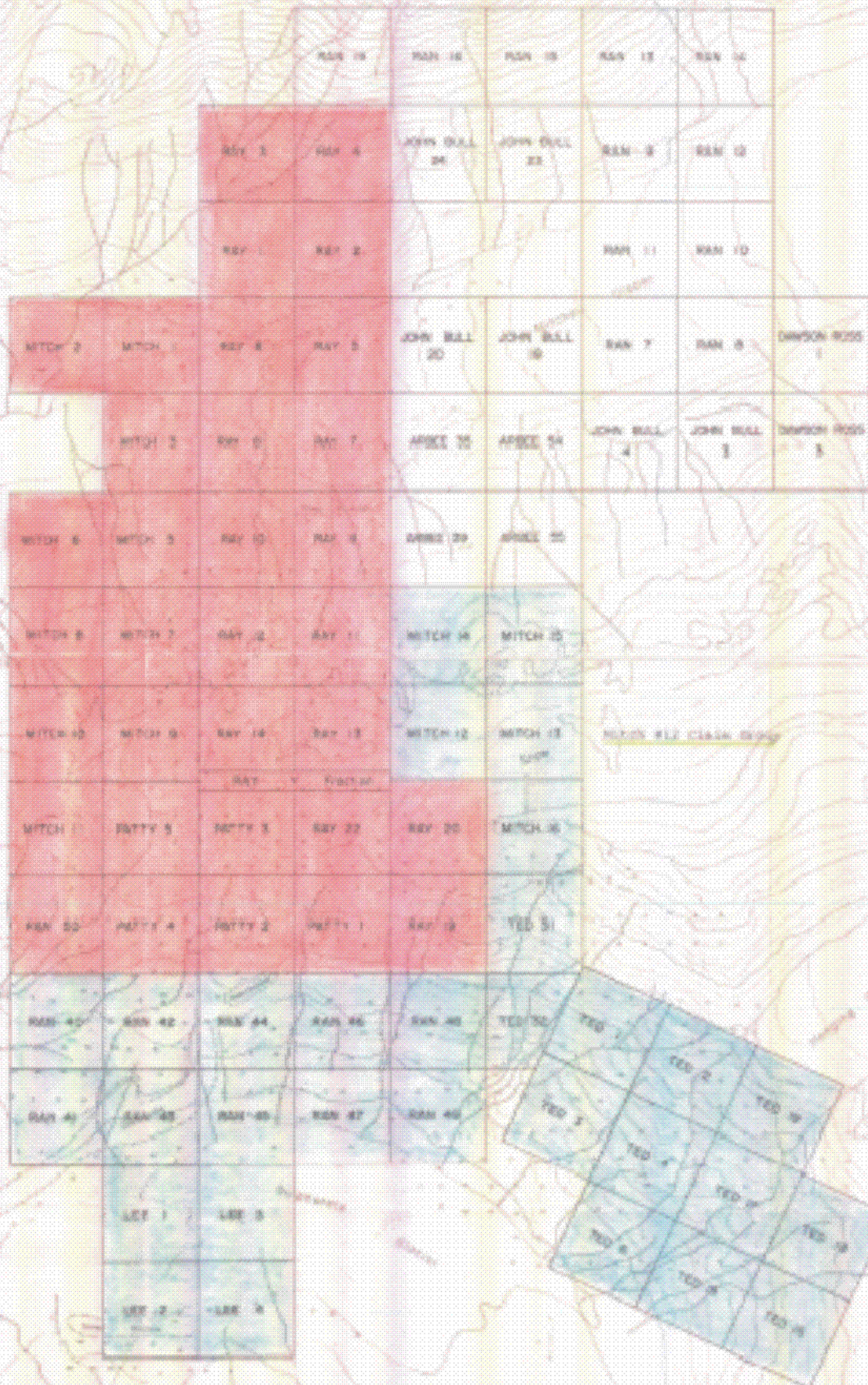


Figure 2
 Location Map - Sulphurets Creek Property
 Ray, Ted, Ran, Mitch, Lee and Patty Claims
 Skeena M.D., British Columbia
 To accompany Summary Report by E. Kruchkowski
 and E. Ostensoe for Granduc Mines, Limited (NPL)
 January 31, 1975
 Scale 1" = approximately 4 miles

**copy
 of
 map**

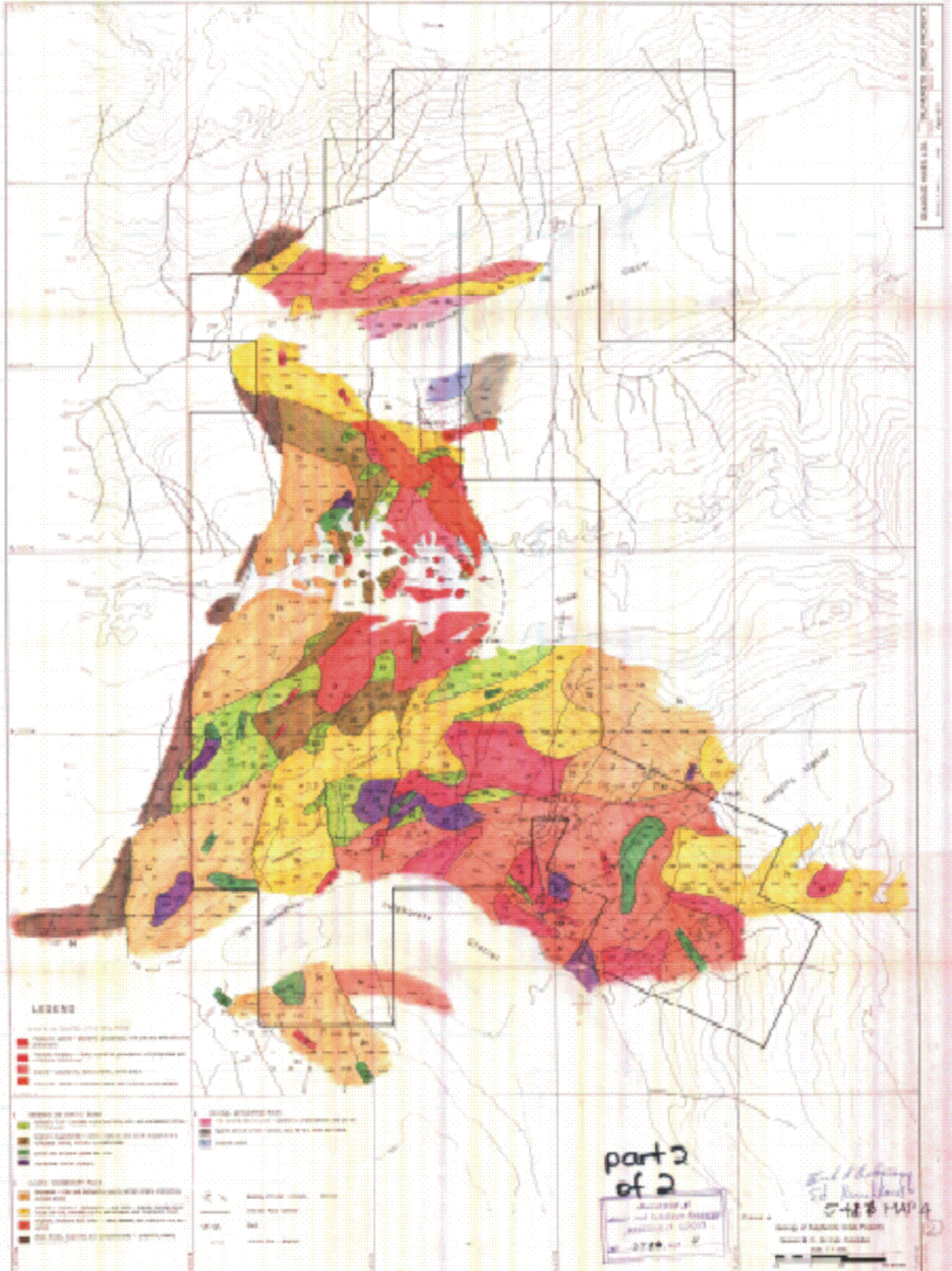


Department of
 Mines and Petroleum Resources
ASSESSMENT REPORT
 NO. 5416 MAP 3

part 2
 of 2

Figure 3.
 New Mitch and Mitch #12 Claim Groups
 To accompany Assessment Report
 Geology and Stratigraphy of Mitch, Ray,
 Patty and Ken (Berke)
 Claims, District W-1,
 British Columbia
 January 31, 1995
 Scale: 1 inch to 1500 feet
 or 450 metres

5416
 MAP 3



LEGEND

- UNCONSOLIDATED DEPOSITS**
 - Recent alluvium (brown)
 - Recent alluvium (yellow)
 - Recent alluvium (red)
 - Recent alluvium (orange)
- GLACIAL DEPOSITS**
 - Recent alluvium (green)
 - Recent alluvium (purple)
 - Recent alluvium (blue)
- GLACIAL DEPOSITS**
 - Recent alluvium (red)
 - Recent alluvium (orange)
 - Recent alluvium (yellow)
 - Recent alluvium (green)
 - Recent alluvium (purple)
 - Recent alluvium (blue)
- GLACIAL DEPOSITS**
 - Recent alluvium (red)
 - Recent alluvium (orange)
 - Recent alluvium (yellow)
 - Recent alluvium (green)
 - Recent alluvium (purple)
 - Recent alluvium (blue)

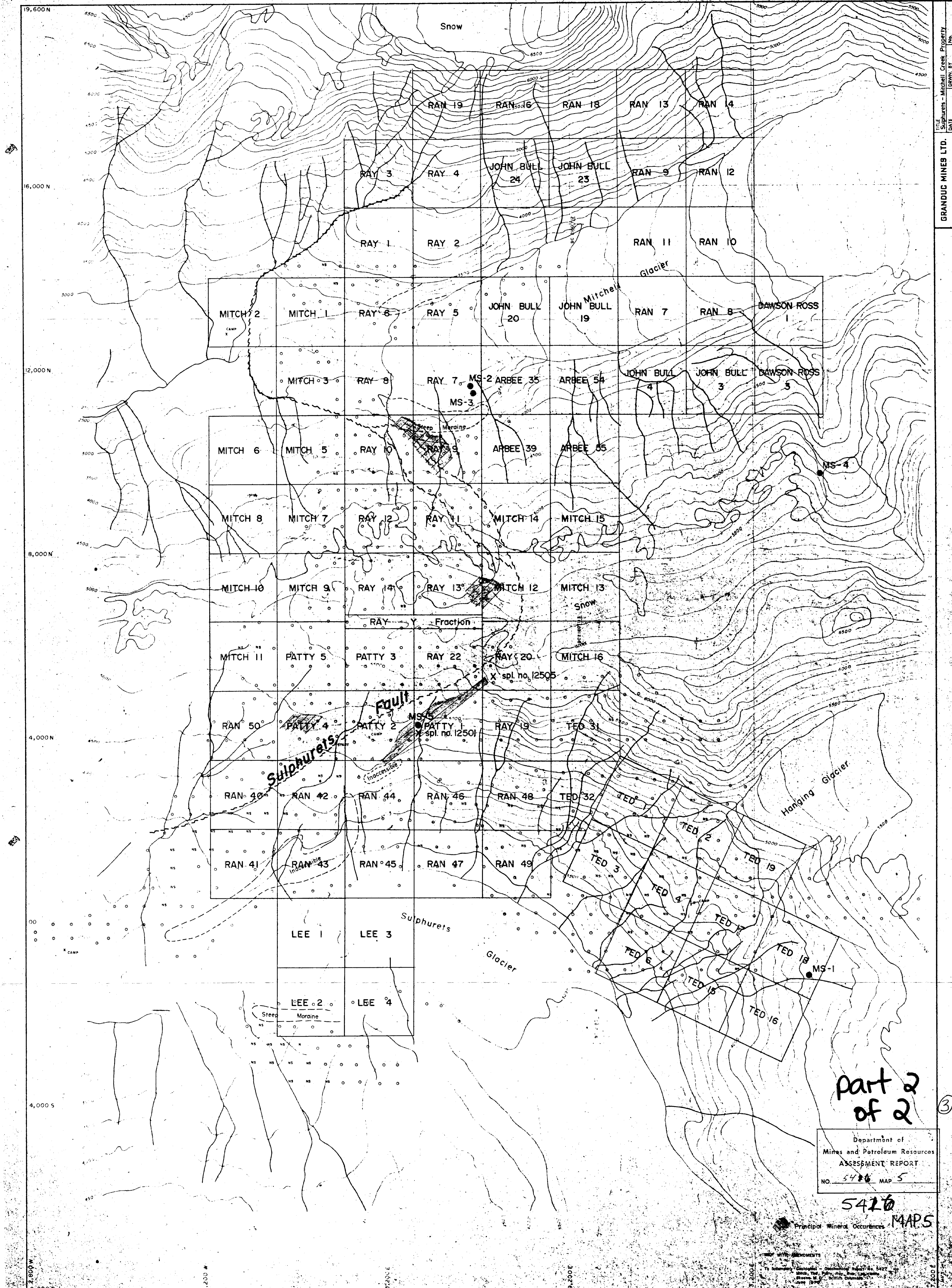
- GLACIAL DEPOSITS**
 - Recent alluvium (red)
 - Recent alluvium (orange)
 - Recent alluvium (yellow)
 - Recent alluvium (green)
 - Recent alluvium (purple)
 - Recent alluvium (blue)

part 2
of 2

MISSISSIPPI
DEPARTMENT OF GEOLOGY
GEOLOGICAL SURVEY
STATE OF MISSISSIPPI
GEOLOGICAL SURVEY
MISSISSIPPI
GEOLOGICAL SURVEY

Ed. J. Jeffrey
Ed. J. Jeffrey
5-18-88 HWP

MISSISSIPPI
DEPARTMENT OF GEOLOGY
GEOLOGICAL SURVEY
STATE OF MISSISSIPPI
GEOLOGICAL SURVEY



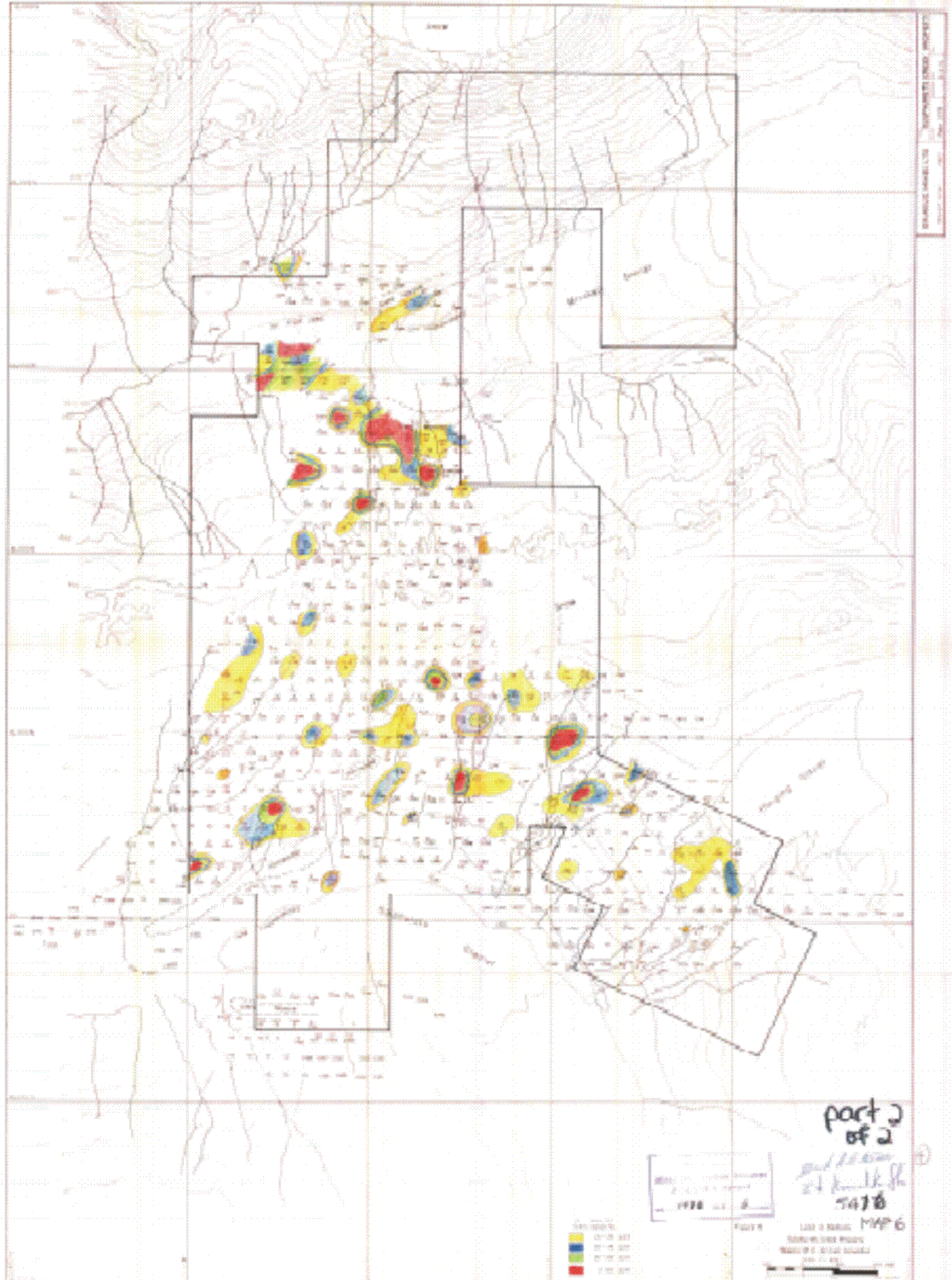
GRANDUC MINES LTD.
 Sulphurets - Mitchell Creek Property
 DRAWN BY: [Name]
 DATE: [Date]
 SCALE 1 INCH = 400 FEET

Part 2
 of 2

Department of
 Mines and Petroleum Resources
 ASSESSMENT REPORT
 NO. 5426 MAP 5

5426 MAP 5
 Principal Mineral Occurrences

WITH AMENDMENTS
 To Assesment Report - Occurrence Report No. 5426
 issued by the Department of Mines and Petroleum Resources
 on 11/11/88 at Perth, Western Australia

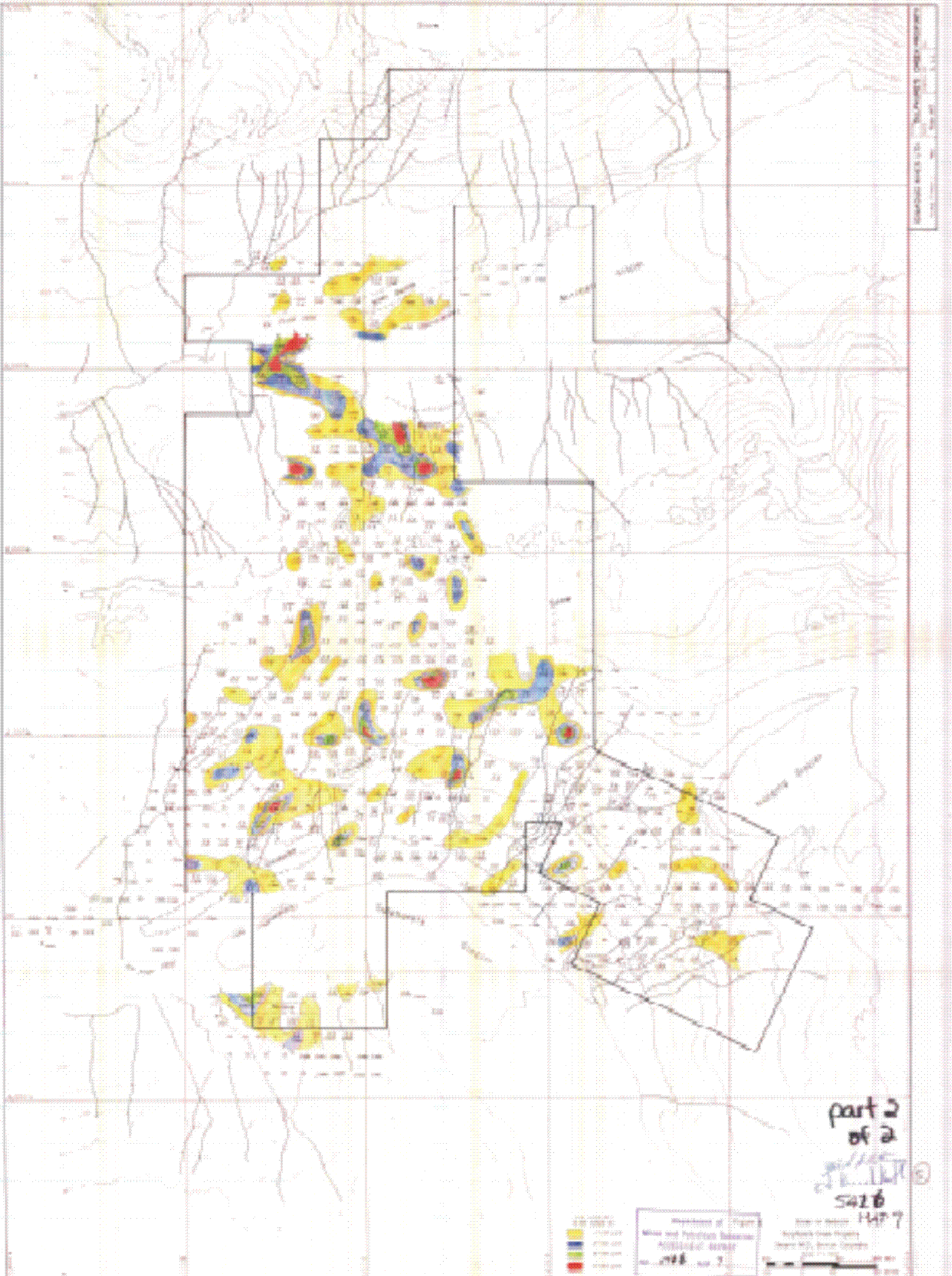


Legend
0.00 - 0.25
0.25 - 0.50
0.50 - 1.00
1.00 - 2.00

FIGURE 5
MAY 1988

part 2
of 2
BRIDGE HARBOR LTD.
24 KENNEDY RD.
5478
MVP 6

BRIDGE HARBOR LTD.
24 KENNEDY RD.
5478
MVP 6



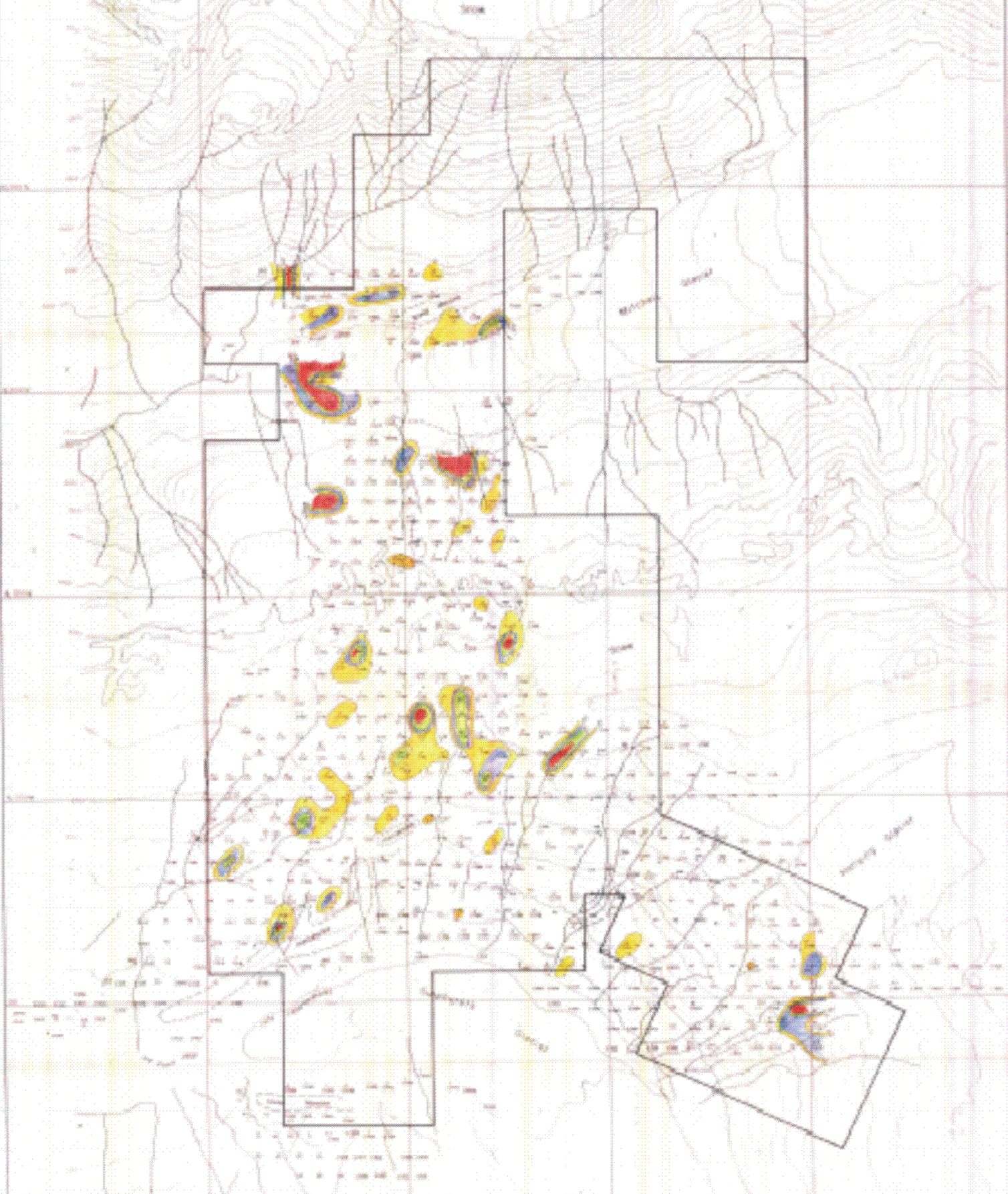
National Map Accuracy Standards
 1:50,000 Scale
 1966 Edition

part 2
 of 2
 5426
 HPT

1000-1500	1500-2000	2000-2500	2500-3000
Yellow	Blue	Green	Red

Department of Energy
 Mine and Petroleum Resources
 Geological Survey
 1978, Vol. 2

Scale of Map
 1:50,000
 North Arrow
 1 inch = 1 mile



Department of
 Mines and Petroleum Resources
 GEOLOGICAL SURVEY
 No. 2928, 1988

part 2
 of 2
 5/11/88
 SL 10-11-12
 5428
 MAB

