



AARON MINING LTD. (N.P.L.)

120 - 890 WEST PENDER STREET, VANCOUVER, B.C. V6C 1J9
TELEPHONE: 681-3451/2

April 3rd 1975

Chief Inspector of Mines,
1837 Fort Street,
Victoria, B. C.

Dear Sirs,

The core for enclosed Diamond Drill Holes
is presently stored at 6470 Cabeldu Crescent, Delta, B. C.

The affidavit on application to record
work was filed in Vancouver on March 7th on Rye 1 - 5, 13 and 15
of the Oats Group.

Enclosed is the following:

1. Drill Logs for Holes # 3, # 7, #8 and #9.
2. Index Maps.
3. Property Map -- 1" = 200'.
4. Copy of Drilling Contractors Contract
5. Copy of Drilling Contractors Invoices.

DEPT. OF MINES AND PETROLEUM RESOURCES		
Rec'd APR 7 1975		

Sincerely,

AARON MINING LTD

D. S. Ashe

DSA/lw

Department of Mines and Petroleum Resources ASSESSMENT REPORT	
NO. 5421	MAP

MAPS
#1 Claim Location.

March 31, 1975.


Aaron Mining Ltd. (N.P.L.)
Leaver Lake Property
New Westminster B.C.
British Columbia

DEEP DRILL HOLE #3 (B.C. CORE SITE)

Dip	-57°	Date started	19 April 1974
Bearing	N 20° W	Date finished	23 April 1974
Depth	126 ft.	Date logged	31 March 1975
Elevation	900 ft.		
Core Recovery	76.4%		

0.0 - 3.0	Overburden
3.0 - 29.0	Gravel-like fragments - rusty on broken surfaces
29.0 - 47.0	Medium grained grey andesite with criss-crossing and radiating patches and veinlets of quartz and calcite pyrite well disseminated (3%)
47.0 - 86.0	Core broken - weak to moderate alteration - pyrite about 2% At 76.0 a 6" broken pink calcite stringer
86.0 - 100.0	Coarse andesite (may be diorite intrusive?) Heavy pyrite 1 - 5% Some chalcopryite specks at 99.0 ft.
100.0 - 126.0	Mixed medium to fine grained andesite At 117.5 ft. 1/2" fracture of pink calcite 15° to core At 109.0 small pyrite fracture 15° to core

END OF HOLE



ASSAYS

<u>Assay No.</u>	<u>From (ft)</u>	<u>To (ft)</u>	<u>Interval (ft)</u>	<u>Ag. (oz)</u>	<u>Au. (oz)</u>
20959	8	10	10	0.19	0.008
60	10	20	10	0.09	0.003
61	20	30	10	0.17	0.003
62	30	35	5	0.12	0.003
20963	35	39	4	0.11	0.003
20954	39	45	6	0.36	0.039
20964	45	50	5	0.13	0.008
65	50	58	8	0.12	0.008
20955	58	61	3	1.02	0.67
20966	61	63	2	0.30	0.029
20956	63	65	2	2.73	0.17
20972	65	70	5	0.23	0.02
20967	70	75	5	0.37	0.057
20968	80	85	5	0.11	0.005
69	88	93	5	0.17	0.003
20957	93	100	7	0.79	0.20
20958	112	117	5	0.31	0.016
20970	121	126	5	0.21	0.003

CORE RECOVERY

<u>From (ft)</u>	<u>To (ft)</u>	<u>Core Length (inches)</u>	<u>From (ft)</u>	<u>To (ft)</u>	<u>Core Length (inches)</u>
8.0	- 19.0	72	79.0	- 83.0	45
19.0	- 23.0	24	83.0	- 88.0	48
23.0	- 30.0	40	88.0	- 93.0	46
30.0	- 37.5	78	93.0	- 98.0	60
37.5	- 47.0	84	98.0	- 100.0	6
47.0	- 59.0	132	100.0	- 102.0	6
59.0	- 63.0	40	102.0	- 106.0	45
63.0	- 75.0	75	106.0	- 116.0	115
75.0	- 79.0	48	116.0	- 126.0	118
			End of Hole	Total	1082

$\frac{1082}{12} = 90.2 \text{ ft.}$

Core Recovery

$\frac{90.2}{118} \times 100 = 76.4\%$

March 31, 1975.

Baron Mining Ltd. (S.S.L.)
Clever Lake Property
New Westminster B.C.
British Columbia

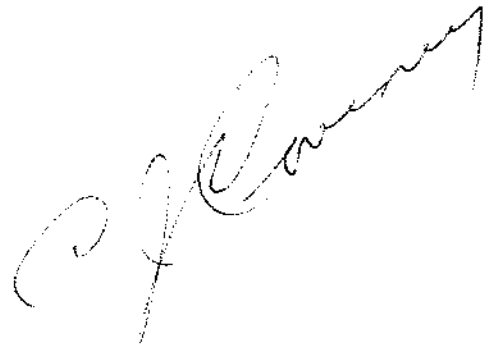
DEEP DRILL HOLE #7 (S.S.L. CLAIM BLOCK)

Dip	-16°	Date started	22 May 1974
Bearing	350°	Date finished	29 May 1974
Claim	1/2	Date logged	31 March 1975
Length	316 ft.		
Depth	225 ft.		
Recovery	91.7%		

0.0 - 10.0 Overburden
10.0 - 56.0 Grey-green andesite
10.0 - 30.0 broken gravel size pieces
30.0 - 57.0 numerous slips with radiating calcite veinlets
minor disseminated pyrite
56.0 - 111.0 Similar to above but slightly coarser texture
a few large slips 25 - 30° to core
at 86.0 - 88.0 coarse pink calcite 20° to core
at 92 1/2" pink calcite fracture 30° to core
111.0 - 114.3 Mainly white quartz
114.3 - 142.5 Similar to section 56.0 - 111.0 ft.
142.5 - 150.5 Dense fine grained light grey andesite
150.5 - 163.0 Greyish andesite with numerous radiating veinlets of white calcite
minor disseminated pyrite
163.0 - 178.0 Similar to above but with white calcite veinlets widespread
and not so numerous
pyrite 1 - 2%
178.0 - 188.0 Grey brown dense andesite with numerous patches and veinlets
of calcite at various angles to core
pyrite 1 - 2%

- 188.0 - 205.0 Dense fine grained grey-green andesite with thready-like black material at 90° to core. The black material (possibly altered mica or hornblende) is fairly uniformly distributed throughout the core
- 205.0 - 229.0 Brown-grey dense fine grained andesite
Fracture at 216.0 is 40° to core
Pyrite 2 - 3%
- Section grades into following section
- 229.0 - 290.0 Greyish andesite - medium to coarse textured
233.0 - 243.5 brecciated section
- 290.0 - 302.0 Similar to above but with some brownish colored or altered patches
Pyrite 1 - 2%
- Grades into next section
- 302.0 - 316.0 Grey coarse andesite
Minor chalcocrite at 310.5 ft.
Widespread scattering of calcite and quartz veinlets throughout the section

END OF HOLE



ASSAYS

<u>From</u> (ft.)	<u>To</u> (ft.)	<u>Interval</u> (ft.)	<u>Ag.</u> (oz.)	<u>Au.</u> (oz.)
85.0	90.0	5.0	0.67	0.03
109.0	114.0	5.0	0.24	0.016
155.0	160.0	5.0	0.10	0.003
205.0	210.0	5.0	0.06	0.003

CORE RECOVERY

<u>From</u> (ft)	<u>To</u> (ft)	<u>Core Length</u> (inches)	<u>From</u> (ft)	<u>To</u> (ft)	<u>Core Length</u> (inches)
10.0	13.0	30	136.0	146.0	119
13.0	18.0	30	146.0	156.0	119
18.0	20.0	4	156.0	166.0	120
20.0	25.0	26	166.0	176.0	119
25.0	30.0	50	176.0	180.0	48
30.0	36.0	60	180.0	189.0	107
36.0	39.0	23	189.0	199.0	120
39.0	44.0	60	199.0	204.0	60
44.0	47.0	36	204.0	215.0	125
47.0	51.0	48	215.0	226.0	131
51.0	60.0	102	226.0	236.0	130
60.0	65.0	60	236.0	246.0	120
65.0	70.0	58	246.0	256.0	119
70.0	81.0	106	256.0	266.0	120
81.0	90.0	106	266.0	276.0	130
90.0	96.0	76	276.0	286.0	120
96.0	101.0	59	286.0	296.0	130
101.0	107.0	59	296.0	306.0	130
106.0	111.0	57	306.0	316.0	120
111.0	122.0	130			
122.0	126.0	43			
126.0	136.0	119			
				Total	3479

$$\frac{3479}{12} = 289.9 \text{ ft.}$$

Core Recovery

$$\frac{289.9}{306} \times 100 = 94.7\%$$

March 31, 1975.

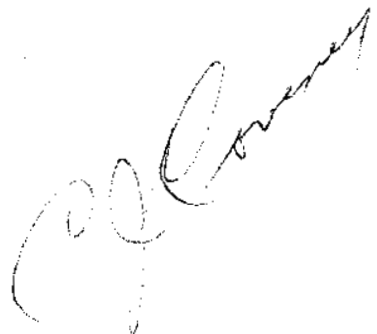
Aaron Mining Ltd. (N.P.L.)
Beaver Lake Property
New Westminster B.C.
British Columbia

SILICEOUS DRILL HOLE #8 (D.G. CORE SITE)

Dip	-45°	Date started	30 May 1974
Bearing	N 70° E	Date finished	30 May 1974
Length	106 ft.	Date logged	31 March 1975
Elevation	850 ft.		
Core Recovery	91.5%		

0.0 - 10.0 Overburden
10.0 - 30.0 Siliceous section - looks like vein material
Some pink calcite
30.0 - 98.0 Grey medium grained andesite - in part agglomeritic
Some small fine grained green-grey patches and small sections
Widespread scattering of small quartz and calcite veinlets
Pyrite about 2 - 3%
98.0 - 106.0 Dense fine grained green-grey andesite
From 103.0 - 104.0 some rusty fractures

END OF HOLE



ASSAYS

<u>Assay No.</u>	<u>From</u> (ft)	<u>To</u> (ft)	<u>Interval</u> (ft)	<u>Ag.</u> (oz)	<u>Au.</u> (oz)
55944	10	15	5	0.33	0.063
45	15	25	10	0.29	0.037
46	25	30	5	0.29	0.13
47	30	35	5	0.12	0.004
55948	35	41	6	0.04	0.003

CORE RECOVERY

<u>From</u> (ft)	<u>To</u> (ft)	<u>Core Length</u> (inches)
10.0	- 25.0	100
25.0	- 31.0	70
31.0	- 41.0	118
41.0	- 46.0	58
46.0	- 51.0	60
51.0	- 56.0	57
56.0	- 61.0	58
61.0	- 66.0	60
66.0	- 71.0	60
71.0	- 76.0	58
76.0	- 81.0	60
81.0	- 86.0	60
86.0	- 91.0	60
91.0	- 96.0	58
96.0	- 101.0	60
101.0	- 106.0	58
Total		<u>1055</u>

$$\frac{1055}{12} = 87.9 \text{ ft.}$$

Core recovery

$$\frac{87.9}{96.0} \times 100 = 91.5\%$$

McLennan

March 31, 1975.

Aaron Mining Ltd. (N.F.L.)
Beaver Lake Property
New Westminster B.C.
British Columbia

DILLON DRILL HOLE #9 (B.C. CORR 5108)

Dip	90°	Date started	3 May 1974
Length	59 ft.	Date finished	3 May 1974
Elevation	850 ft.	Date logged	31 March 1975
Core Recovery	75.5%		

0.0 - 3.0 Overburden

3.0 - 59.0 Medium grained slightly porphyritic andesite

3.0 - 33.0 Numerous rusty coated fractures

50.0 - 52.0 White siliceous sections (quartz)

Some scattered grey sulphides

Occasional specks of chalcocite throughout section

Alteration throughout section weak to moderate

END OF HOLE

C. J. Rowney

D.H. #9

ASSAYS

<u>Assay No.</u>	<u>From</u> <u>(ft)</u>	<u>To</u> <u>(ft)</u>	<u>Interval</u> <u>(ft)</u>	<u>Gr.</u> <u>(oz)</u>	<u>Au.</u> <u>(oz)</u>
55949	3.0	11.0	8	0.69	0.099
50	11.0	15.0	4	1.03	0.200
20981	15.0	20.0	5	0.56	0.107
82	20.0	25.0	5	0.20	0.038
83	25.0	30.0	5	0.09	0.020
84	33.0	38.0	5	0.13	0.010
85	38.0	43.0	5	0.10	0.023
20986	49.0	54.0	5	2.68	0.435

CORE LENGTH

<u>From</u> <u>(ft)</u>	<u>To</u> <u>(ft)</u>	<u>Core Length</u> <u>(inches)</u>
3.0	4.0	5
4.0	7.0	4
7.0	11.0	15
11.0	15.0	0
15.0	20.0	57
20.0	25.0	57
30.0	30.0	57
30.0	33.0	35
33.0	38.0	49
38.0	43.0	60
43.0	48.0	60
48.0	54.0	48
54.0	59.0	60
Total		<u>507</u>

$$\frac{507}{12} = 42.3 \text{ ft.}$$

Core Recovery

$$\frac{42.3}{56} \times 100 = 75.5\%$$

FROM

DEPARTMENT

~~D.S. Ashe Contracting Ltd. 6470 Cabeldu Crescent Delta B.C. V4E 1R3~~

Aaron Mining Ltd. (N.P.L.)

DATE June 4, 1974.

120 - 890 West Fender Street

DIAMOND DRILLING

~~Vancouver B.C. V6C 1J9~~

Bye #2

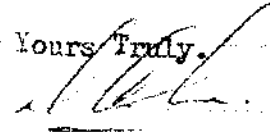
MESSAGE

Diamond Drill Hole #9 - 59 feet @ \$10.00 / ft = \$590.00

Total Invoice = \$590.00

Thank You.

Yours Truly,



D.S. (Don) Ashe

FROM

D.S.Ashe Contracting Ltd. 6470 Cabaldu Cresent, Delta B.C. V1E 1R3

DEPARTMENT

DATE

Aaron Mining Ltd. (N.P.L.)

June 4, 1974.

120 - 890 West Pender Street

SUBJECT

Diamond Drilling

Vancouver B.C. V6C 1J9

Eye #2

MESSAGE

Diamond Drill Hole #7 - 316 feet @ \$10.00 / ft = \$3160.00

Total Invoice = \$3160.00

Thank You.

Yours Truly,



B.M. (Don) Ashe

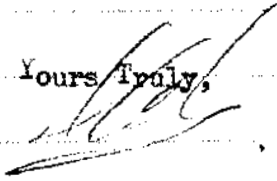
FROM D.S.Ashe Contracting Ltd. 6470 Cabeldu Cresent, Delta B.C. V4E 1R3	DEPARTMENT
Aaron Mining Ltd. (N.P.L.) 120 - 890 West Pender Street, Vancouver B.C. V6C 1J9	DATE May 9, 1974. SUBJECT Diamond Drilling Eye Claims.

MESSAGE

Diamond Drill Hole #3 - 126 feet @ \$10.00 / ft = \$ 1260.00

Total Invoice = \$ 1260.00

Thank You.

Yours Truly,

D.H. (Don) Ashe.



D. S. ASHE CONTRACTING LTD.

~~58 - 845 HORNBY ST. VANCOUVER B.C. V6C 2K6~~
6170 Cabalta Crescent, Delta B.C. V4E 1R3 Ph 596-6593

D. S. ASHE, PRESIDENT

SPECIALIZING IN:
OPEN PIT MINING
DAM CONSTRUCTION

April 12, 1974.

Aaron Mining Ltd. (N.P.L.)
120 - 890 West Pender Street,
Vancouver B.C.

Dear Sir:

Please accept our tender price of \$10.00 per foot
for a minimum of 1000 feet with BQ wire line, to Diamond
Drill your Weaver Lake property.

This price to include all costs, as follows.

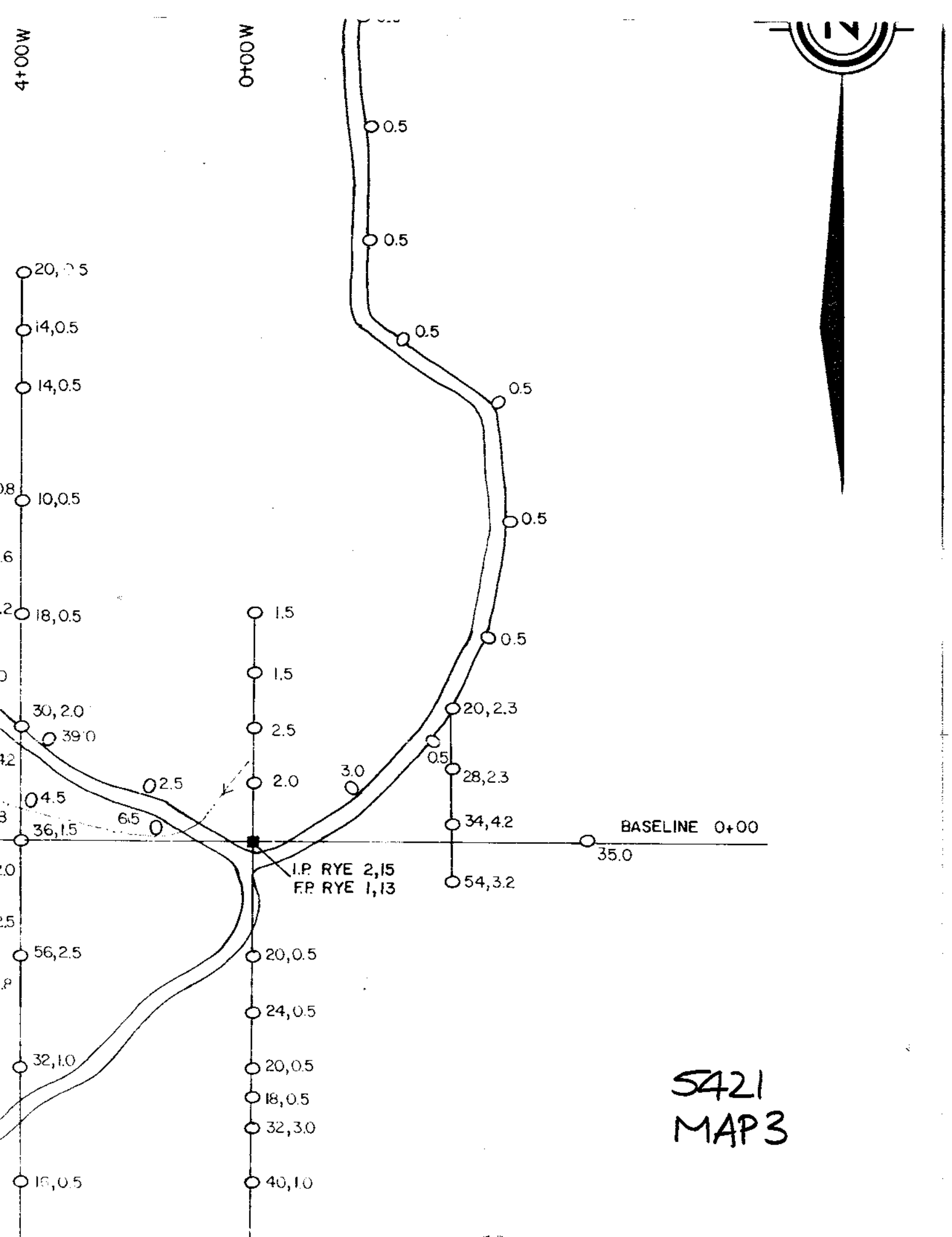
1. Mobilisation in and out.
2. Moving from drill site to drill site.
3. Cementing holes, and any incidental to the drilling program.

Looking forward to your acceptance of our tender.

I remain.

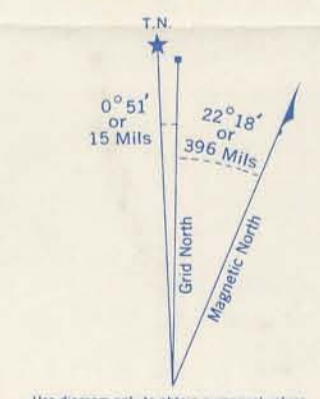
Yours Truly,


D.S. (Don) Ashe





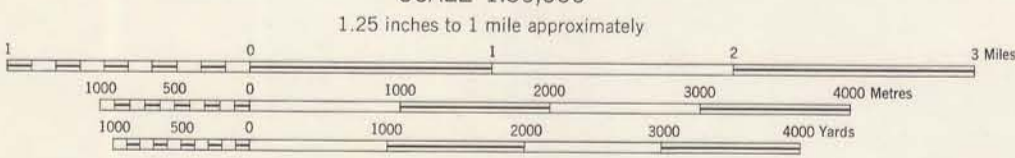
Department of
Mines and Petroleum Resources
ASSESSMENT REPORT
NO. 5421 MAP #1



Produced and printed by the SURVEYS AND MAPPING
BRANCH, DEPARTMENT OF MINES AND TECHNICAL
SURVEYS, 1955, from air photographs taken in 1951.

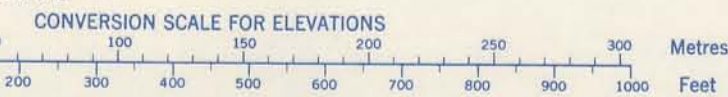
HARRISON LAKE
BRITISH COLUMBIA
WEST OF SIXTH MERIDIAN

SCALE 1:50,000
1.25 inches to 1 mile approximately



CONTOUR INTERVAL 100 FEET
Elevations in Feet above Mean Sea Level
North American Datum 1927
Universal Transverse Mercator Projection

Copies may be obtained from the Map Distribution
Office, Department of Mines and Technical
Surveys,
Ottawa



REFERENCE

Roads: hard surface, all weather	more than 2 lanes	2 lanes
hard surface, all weather	less than 2 lanes	
loose surface, all weather	2 lanes or more	less than 2 lanes
loose surface, dry weather		
winter, cart track		
trail or portage		
Railways: normal gauge, multiple track	Station	
normal gauge, single track	Station	
narrow gauge, single track	Station	
abandoned or under construction		
Bridges: road, railway		
Boundaries: county or district		
township surveyed, unsurveyed		
municipality		
park, reserve, etc.		
section line with number	30	
Lot number	L 1805	
Horizontal control point, with elevation	BM 454	
Bench mark, with elevation	BM 157	

REFERENCE

Mine or Open cut	Lighthouse
Building: Barn	School: Post Office
Church	Cemetery
Built up area	
Power transmission line	
Streams: intermittent or dry	
indefinite	
Lake intermittent, indefinite	
Inundated land, seasonal	
Marsh or Swamp	
Freshwater flats	
Wharf or Pier, Breakwater	
Rocky reef	
Small island, rock bare or awash	
Contours: elevation	
depression	
approximate	
Cliff	
Cutting; Embankment	
Forest	

100,000 M. SQUARE IDENTIFICATION

GRID ZONE DESIGNATION	EK
10U	

TO GIVE A REFERENCE TO NEAREST 100 METRES
EXAMPLE: CAMP COVE POINT
EASTING: Read number on grid line immediately to left of point
Estimate tenths of a square from this line eastward to point.
7
NORTHING: Read number on grid line immediately below point
Estimate tenths of a square from this line northward to point.
692
MILITARY GRID REFERENCE: 847692
Nearest similar grid reference 100,000 metres (about 63 miles)

ONE THOUSAND METRE UNIVERSAL TRANSVERSE MERCATOR GRID ZONE 10

INDEX TO ADJOINING SHEETS

92 G/9	92 H/12	92 H/11
STAVE RIVER	MOUNT URQUHART	SPOZZUM
92 G/8	92 H/5	92 H/6
STAVE LAKE	HARRISON LAKE	HOPE
92 G/1	92 H/4	92 H/3
SUMAS	CHILLIWACK	SKAGIT

5421
MAP 1

HARRISON LAKE
92 H/5 WEST
EDITION 1 ASE

DOMINION MAP LIMITED
571 HOWE STREET 604-605
VANCOUVER 1, B. C.