

# 5428

93H/13W

ZULU EXPLORATIONS LTD (NPL)

DRILLING Z8 DRILL HOLE

The drill used was a Longyear No. 38, a wire line drill size BQ with 1 7/16" core.

LOCATION

Bowron River Area, approximately 50 miles SE of Prince George in the Cariboo Mining Division.

On LAD 2 mineral claim

On Lot 4845

2,400 feet S45E of the Z7 drill hole

1,700 feet S45W of Swamp Creek

AZIMUTH . . . . 1° quadrilateral 53° 121 NW

Reference Map . . . . 93H/13W

ELEVATION . . . . 2,450

INCLINATION . . . . 90° from horizontal

DEPTH OF HOLE . . . . 117 feet

Spring break-up delayed moving the drill to the site of the Z8 drill hole. Although the Z7 drill hole was completed on April 27th, 1974, 17 days were required to obtain the "bulldozer", clear the skid-road, and move the drill. The Z8 drill hole was started on May 14th, 1974.

Department of  
Mines and Petroleum Resources  
ASSESSMENT REPORT  
NO. 5428 MAP

MAPS

#1 Claim Map 1" = 1,000'

#2 Claim Map 1" = 1,000'

#3 Location Map (Hutton)

ZULU EXPLORATIONS LTD (NPL)

Z8 DRILL HOLE

DIAMOND DRILLING COSTS

May 14th, 1974 to May 30th, 1974 . . . . 2 weeks

3 men . . . . 2 weeks each

A. Kary, John Grzyb and A. J. Garraway

SALARIES

Salary each per month . . . . \$1,500.00 Gross

3 Men at 2 weeks each . . . . \$2,250.00

Allowance for cooking \$500.00 per month. . . \$250.00 . . . . \$2,500.00

MAINTENANCE OF CAMP

Food and supplies . . . . \$240.00

Propane and Diesel fuel . \$ 50.00 . . . . . \$ 290.00

TRANSPORTATION

International 4x4 truck from Camp  
to drill site and return

10 miles . . . . . \$20.00 . . . . . \$ 20.00

DIAMOND DRILL

Rental . . . \$2,625.00 per month

2 weeks. . . . . \$1,312.50

Drilling Mud . . . . . \$ 50.00

1 BQ Diamond Bit . . . \$ 431.97

2 BW casing shoes. . . \$ 514.50

2 Tricone bits . . . . \$ 100.00

Gas & diesel fuel. . . \$ 125.00 . . . . . \$2,533.97

\$5,343.97

ZULU EXPLORATIONS LTD (NPL)

Diamond Drill Logs  
for  
Z8 Drill Hole

0 - 115' . . . . . Overburden - gravel, clay and boulders  
115 - 117' . . . . . Broken Lava Flow

HOLE ABANDONED

The overburden down to 115 feet consisted of gravel, clay and boulders. Drilling through the boulders was costly and time consuming. Although drill rods and diamond bits were used to drill through these boulders, considerable time was required to change tricone bits and shoes on the casing. These boulders damaged and ruined several tricone bits and casing shoes.

At a depth of 80 feet the drill penetrated a cavity which required 8 sacks of drilling mud to plug. Two days were wasted waiting for mud to arrive from Kamloops.

At a depth of 115 feet the drill encountered a bed of broken lava. This broken lava flow was extremely hard on all bits and at 117 feet we found it impossible to push the casing down any further. A similar lava flow was encountered in the Z7 drill hole at a depth of 80 feet, and although this bed was 30 feet thick we had little trouble drilling through the bed into the shales below.

We decided to abandon Z8 and move the drill to the NE to the site of Z9 drill hole.

ZULU EXPLORATIONS LTD (NPL)

DRILLING Z9 DRILL HOLE (FIRST SITE)

The drill used was a Longyear No. 38, a wire line drill size BQ with 1 7/16" core.

LOCATION

Bowron River Area, approximately 50 miles SE of Prince George.

CARIBOO MINING DIVISION

On LAD 2 mineral claim

On Lot 4845

2,400 feet SE of the Z7 drill hole

1,200 S45W of Swamp Creek

AZIMUTH . . . . 1° quadrilateral 53° 121 NW

Reference Map . . . . 93H/13W

ELEVATION . . . . 2,450

INCLINATION . . . . 90° from horizontal

DEPTH OF HOLE . . . . 232 feet

DEPTH OF OVERBURDEN . . . . 232 feet

BW casing put down to 232 feet.

The Z8 drill hole was completed on May 30th, 1974, but six days were required to obtain a "skidder" from the logging camp 12 miles SE of the drill site, and the Z9 drill hole was started on June 6th, 1974.

ZULU EXPLORATIONS LTD (NPL)

DIAMOND DRILLING COSTS

Z9 DRILL HOLE (FIRST SITE)

June 6th, 1974 to June 13th, 1974 . . . . one week

3 men . . . . 1 week each

A. Kary, John Grzyb, and A. J. Garraway

SALARIES

Salary each per month . . . . . \$1,500.00

3 men at 1 week each . . . . . \$1,125.00

Allowance for cooking \$500.00

per month . . . . . \$ 125.00 . . . . . \$1,250.00

MAINTENANCE OF CAMP

Food and Supplies . . . . . \$ 120.00

Propane and Diesel fuel . . . . . \$ 20.00 . . . . . \$ 140.00

TRANSPORTATION

International 4x4 truck from  
Camp to drill and return

10 miles. . . . . \$ 10.00

2 trips to Prince George

100 miles return. . . . . \$ 40.00 . . . . . \$ 50.00

DIAMOND DRILL

Rental . . . \$2,650.00 per month

1 week . . . . . \$ 662.50

Drilling Mud . . . . . \$ 140.00

1 BQ Diamond bit . . . . . \$ 431.97

1 BW casing shoe . . . . . \$ 257.25

1 Tricone bit. . . . . \$ 50.00

Gas and Diesel Fuel. . . . . \$ 50.00 . . . . . \$1,591.72

\$3,031.72

ZULU EXPLORATIONS LTD (NPL)

LOGS FOR Z9 DRILL HOLE (FIRST SITE)

0 - 232' . . . Overburden, gravel, clay and boulders  
232 - . . . Soft brown shales

When the drill had penetrated the solid at a depth of 232 feet we decided to push the casing down a few feet into the shales.

After only a few inches the casing stuck, and before the drill could be stopped, the casing broke. We immediately pulled the casing and found that the breakage had occurred 80 feet down from the top of the drill hole. Before we could use the "fisher", the hole caved above the broken casing. A day was spent trying to recover the casing. 150 feet of casing was lost, and we had to immediately order 300 feet of new casing at a cost of \$1,575.00. The drill hole was abandoned on June 13th, 1974.

The assessment work and rental had to be recorded and paid by August 21st, 1974, on the LAD Five Group of 40 claims. Owing to the limited time we decided to move to the Z10 drill site, and after drilling this hole move back to the Z9 drill site.

ZULU EXPLORATIONS LTD (NPL)

DRILLING Z9 DRILL HOLE (SECOND SITE)

The drill used was a Longyear No. 38, a wire line drill size BQ with 1 7/16" core.

LOCATION

Bowron River Area, approximatley 50 miles SE of Prince George.

CARIBOO MINING DIVISION

On LAD 2 mineral claim

On Lot 4845

2,400' SE of Z7 drill hole

1,200' S45W of Swamp Creek

25 feet from the Z9 First site.

AZIMUTH . . . . 1° quadrilateral 53° 121 NW

REFERENCE MAP . . . . 93H/13W

ELEVATION . . . . 2,450

INCLINATION . . . . 90° from horizontal

DEPTH OF HOLE . . . . 815 feet

DEPTH OF OVERBURDEN . . . . 232 feet

Casing firmly set at 240 feet.

Drill Core stored at the camp at the Garraway Mine.

The Z10 drill hole was completed in the forenoon of August 16th, 1974, the drill moved to the Z9 drill site, set up, and drilling started the same day.

ZULU EXPLORATIONS LTD (NPL)

DIAMOND DRILLING COSTS

Z9 DRILL HOLE (SECOND SITE)

August 16th, 1974 to September 12th, 1974 . . . four weeks

3 men . . . four weeks each

A. Kary, John Grzyb and A. J. Garraway

SALARIES

Salary each per month . . . . . \$1,500.00 Gross

3 men at 4 weeks each . . . . . \$4,500.00

Allowance for cooking . . . . . \$ 500.00 . . . . . \$5,000.00

MAINTENANCE OF CAMP

Food and supplies . . . . . \$ 480.00

Propane and diesel fuel . . . . . \$ 80.00 . . . . . \$ 560.00

TRANSPORTATION

International 4x4 truck from Camp  
to drill and return  
10 miles. . . . . \$ 20.00

2 trips to Prince George,  
each 100 miles. . . . . \$ 40.00 . . . . . \$ 60.00

DIAMOND DRILL

Rental . . . \$2,625.00 per month

4 weeks . . . . . \$2,625.00

Drilling mud. . . . . \$ 225.00

1 BQ diamond bit. . . . . \$ 431.97

2 BW casing shoes . . . . . \$ 514.50

2 Tricone bits. . . . . \$ 150.00

Gas and diesel fuel . . . . . \$ 100.00 . . . . . \$4,106.47

\$9,726.47

SUMMARY OF COSTS

Z8 Drill Hole . . . . . \$5,343.97

Z9 (First Site) . . . . . \$3,031.72

Z9 (Second Site). . . . . \$9,726.47

\$18,102.16



ZULU EXPLORATIONS LTD (NPL)

Diamond Drill Logs

for

Z9 Drill Hole EL. 2450

DRILLER'S REPORT

0' - 232 . . . . . Overburden Casing to 240'  
232 - 320 . . . . . Soft Shales  
320 - 390 . . . . . Soft Shales  
390 - 410 . . . . . Brown Shales  
410 - 440 . . . . . Dark Shales  
440 - 476 . . . . . Dark Shales Pitching above 45°  
476 - 578 . . . . . Dark Shales Pitching 45°  
578 - 618 . . . . . Dark Shales Pitching 30°  
618 - 660 . . . . . Dark Shales  
660 - 690 . . . . . Conglomerate Radioactive  
690 - 718 . . . . . Fine Grained Green Rock - Red Colouring  
Also Radioactive  
718 - 815 . . . . . Fine Grained Green Rock - Red Colouring  
(with 2' conglomerate at 804')  
Radioactive

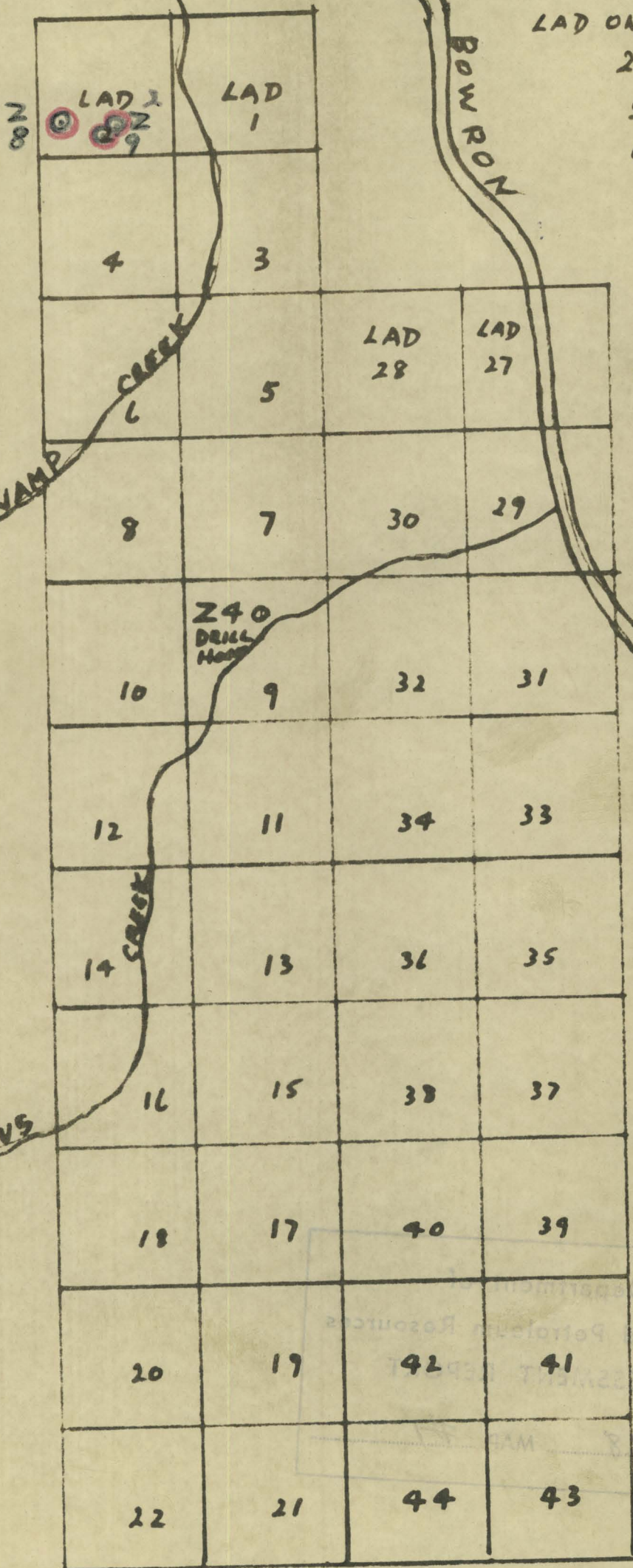
END OF HOLE

The overburden, 232 feet in depth, consisted of gravel, clay and boulders, and drilling was both costly and time consuming.

Logging, sampling and assaying of the drill core from the Z9 drill hole, and other holes drilled by Zulu Explorations Ltd (NPL), will be carried out by Dr. J. E. Hughes, Consulting Geologist, in *JUNE 24, 1975*.

Z8 & Z9 DRILL HOLES  
LAD ONE GROUP  
2383

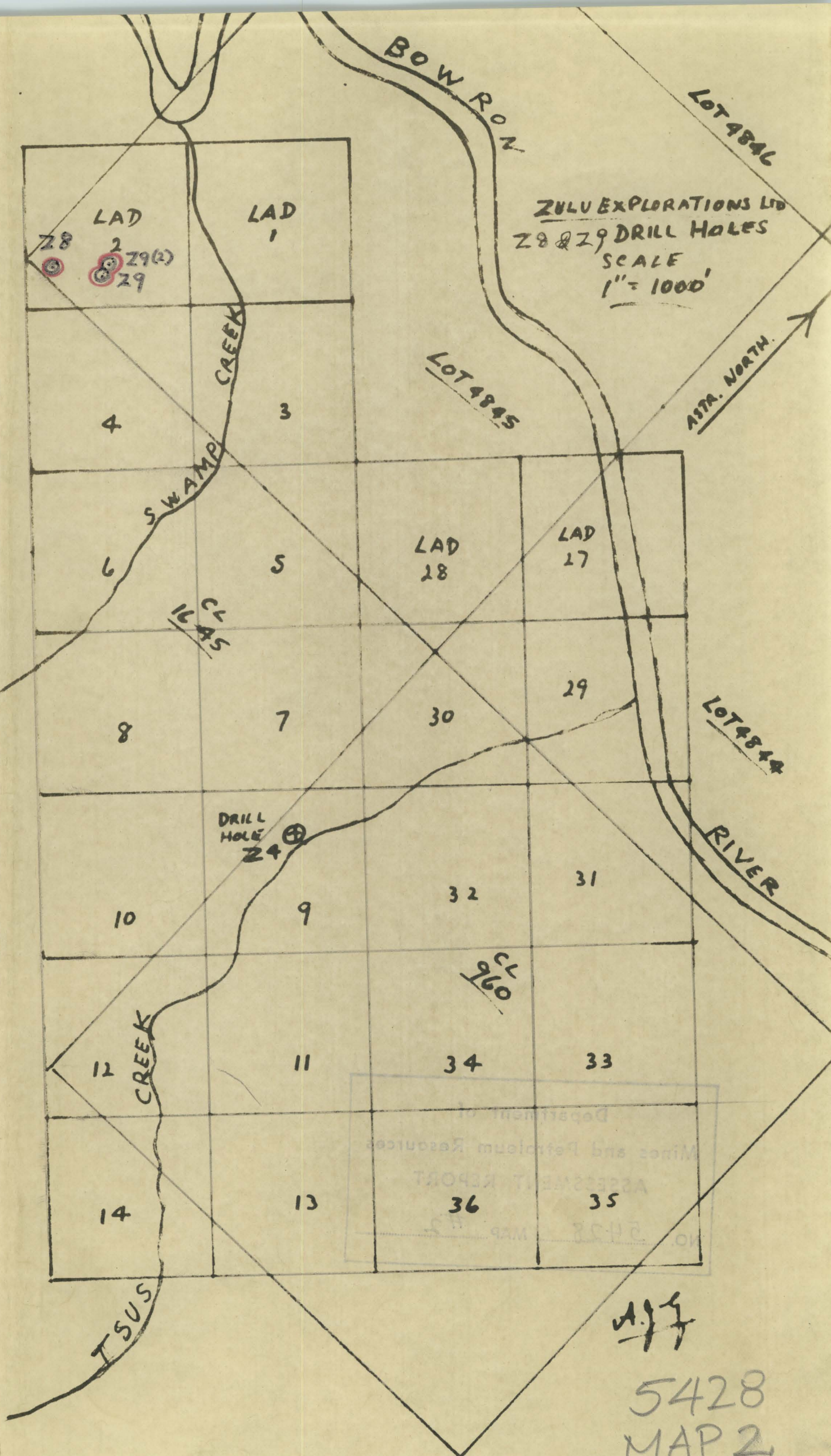
SCALE  
1" = 1500'

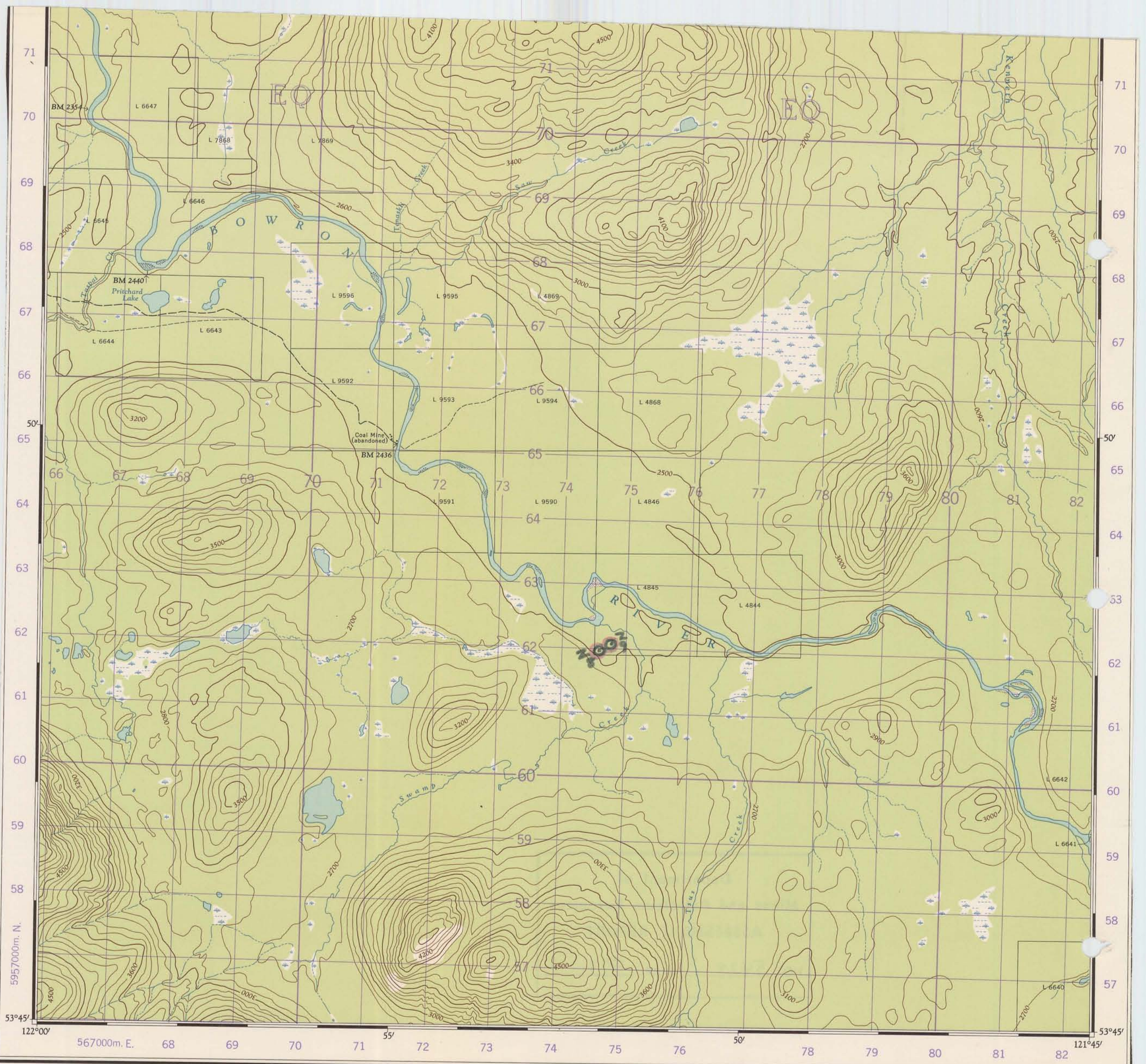


ZULU EXPLORATIONS LTD (NPL)

*AGG*

5428  
MAP 1





Produced and printed by the SURVEYS AND MAPPING BRANCH, DEPARTMENT OF MINES AND TECHNICAL SURVEYS, 1961, from air photographs taken in 1953 and 1955.

HUTTON  
CARIBOO DISTRICT  
BRITISH COLUMBIA

5428  
MAP 3

Établie et imprimée par la DIRECTION DES LEVÉS ET DE LA CARTOGRAPHIE, MINISTÈRE DES MINES ET DES RELEVÉS TECHNIQUES en 1961, d'après les photographies aériennes prises en 1953 et 1955.