

UMEX

5431

UNION MINIERE EXPLORATIONS
AND MINING CORPORATION LIMITED

SUITE 200 - 4299 CANADA WAY
BURNABY, B.C. V5G 1H4

TELEPHONE 497-9491

ASSESSMENT REPORT ON
DIAMOND DRILLING

103G/4E

Mineral Claims

Bella 1 to 6	Record Nos. 37837 - 37842
Bella 7 to 22	37847 - 37862
Marino 1 to 18	37863 - 37880

Skeena Mining Division, British Columbia

N.T.S. 103G/4E

53°05' North Latitude
131°42' West Longitude

by

Alfred A. Burgoyne, M.Sc., P.Eng.

Date: April 15, 1975

Work Dates: February 8 - April 7, 1975

Owner: Union Miniere Explorations and
Mining Corporation Limited

Department of
Mines and Petroleum Resources
ASSESSMENT REPORT

NO. 5431 MAP

CONTENTS

	page
INTRODUCTION	1
DIAMOND DRILLING	1

Figures

	following page
2 FIGURE 1 Location of Bella and Marino Claims	1
3 FIGURE 2 Location of Diamond Drill Holes B75-1, B75-2, B75-3. .	1

Appendices

APPENDIX I	Diamond Drill Logs
APPENDIX II	Statement of Diamond Drilling Costs

ASSESSMENT REPORT ON DIAMOND DRILLING
ON THE BELLA AND MARINO CLAIMS

INTRODUCTION

The Bella and Marino claims are located on the east side of Moresby Island, Queen Charlotte Islands, three miles southeast of Heather Lake and twelve miles south-southeast of Sandspit, B.C. Access to the property is partly by road from Sandspit to the M.O.T. navigation beacon at Gray Point in Gray Bay, a distance of about sixteen miles. From Gray Point it is possible either to follow a packtrail in to the Marino property or fly in by helicopter.

This report is to cover assessment requirements for the Bella 1 to 22 and Marino 1 to 18 mineral claims. The diamond drilling project began on February 8 and terminated on April 7, 1975.

The drilling was under the supervision of A.A. Burgoyne, M.Sc., P.Eng., and the drill core was logged by R. Tolbert, B.Sc. (Geology).

DIAMOND DRILLING

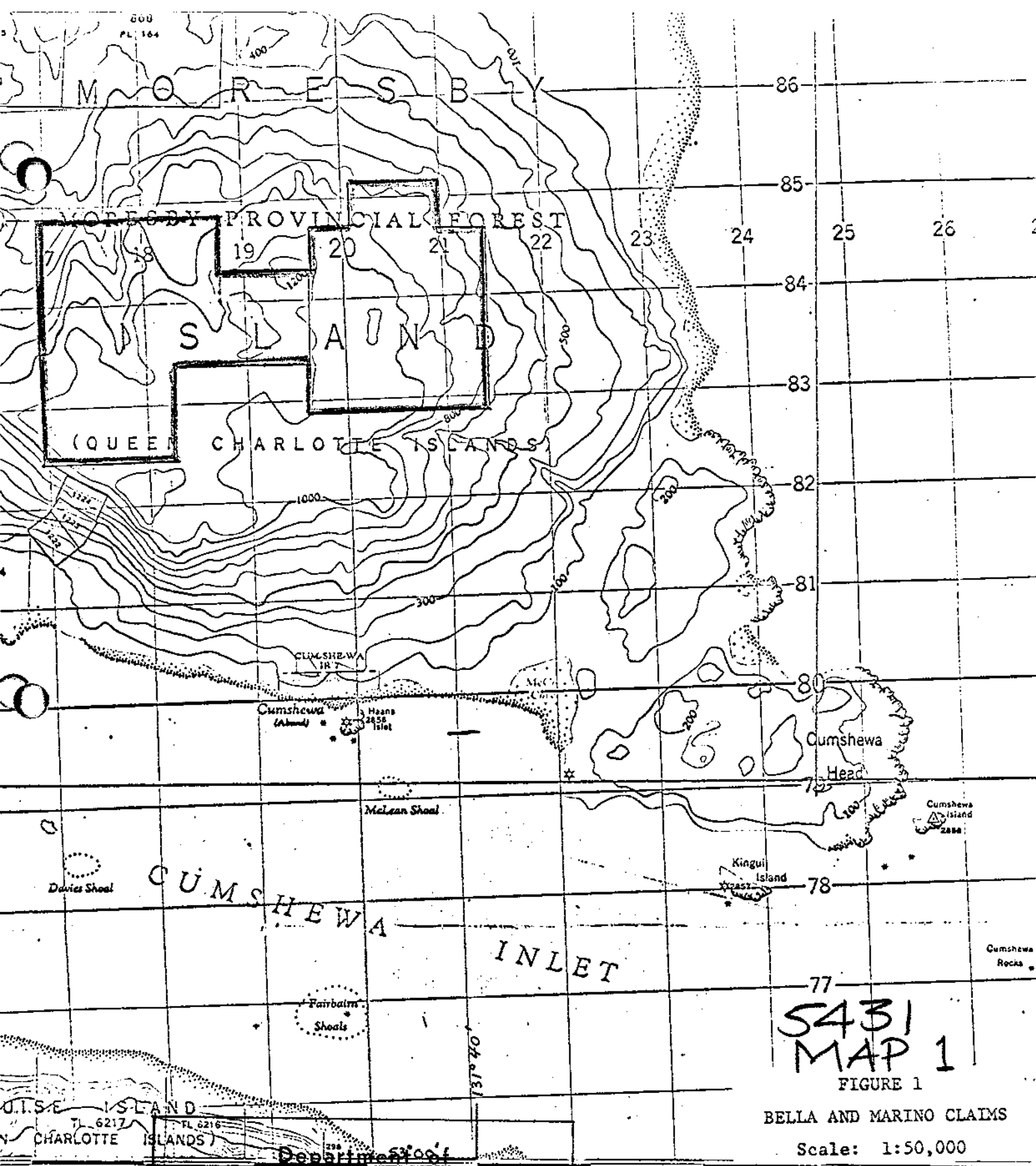
Three diamond drill holes of AX size core were completed using a Long-year-24 Diamond Drill by a UMEX drilling crew on the Bella 3 mineral claim. Note Figures 1 and 2. Drill holes B75-1 and B75-2 were inclined at -45° on a 130° bearing and penetrated to 250 and 245.5 feet, respectively. Drill hole B75-3 was inclined at -45° on a 310° bearing and penetrated to 150 feet. The elevation of hole B75-1 is approximately 1175 feet, whereas the elevation of holes B75-2 and B75-3 is approximately 1125 feet.

The drill core is stored at 930 Railway Avenue, Richmond, B.C.

The diamond drilling logs and a statement of drilling costs are given in the Appendices.

Respectfully submitted,

Alfred A. Burgoyne
Alfred A. Burgoyne, M.Sc., P.Eng.



77
5431
MAP 1

FIGURE 1
 BELLA AND MARINO CLAIMS

Scale: 1:50,000

00m. E. 17 20 18 19 20 21 22 23 24 25 26 27 28 29
 Miles and Petroleum Resources

Department of
ASSESSMENT REPORT
 NO. **5431** MAP **1**

CUMSHEWA

QUEEN CHARLOTTE DISTRICT

BRITISH COLUMBIA

SCALE 1:50,000 ÉCHELLE

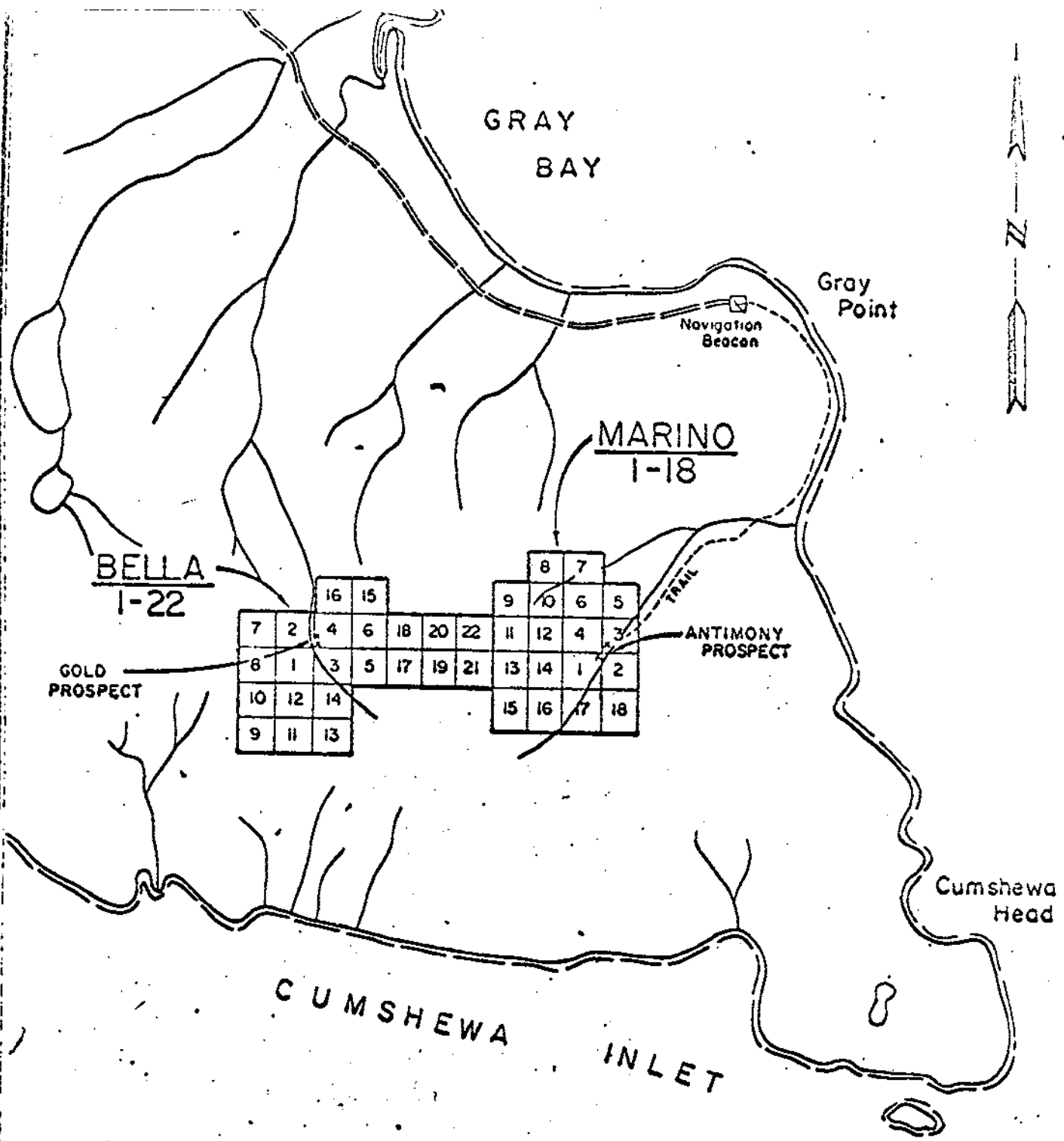
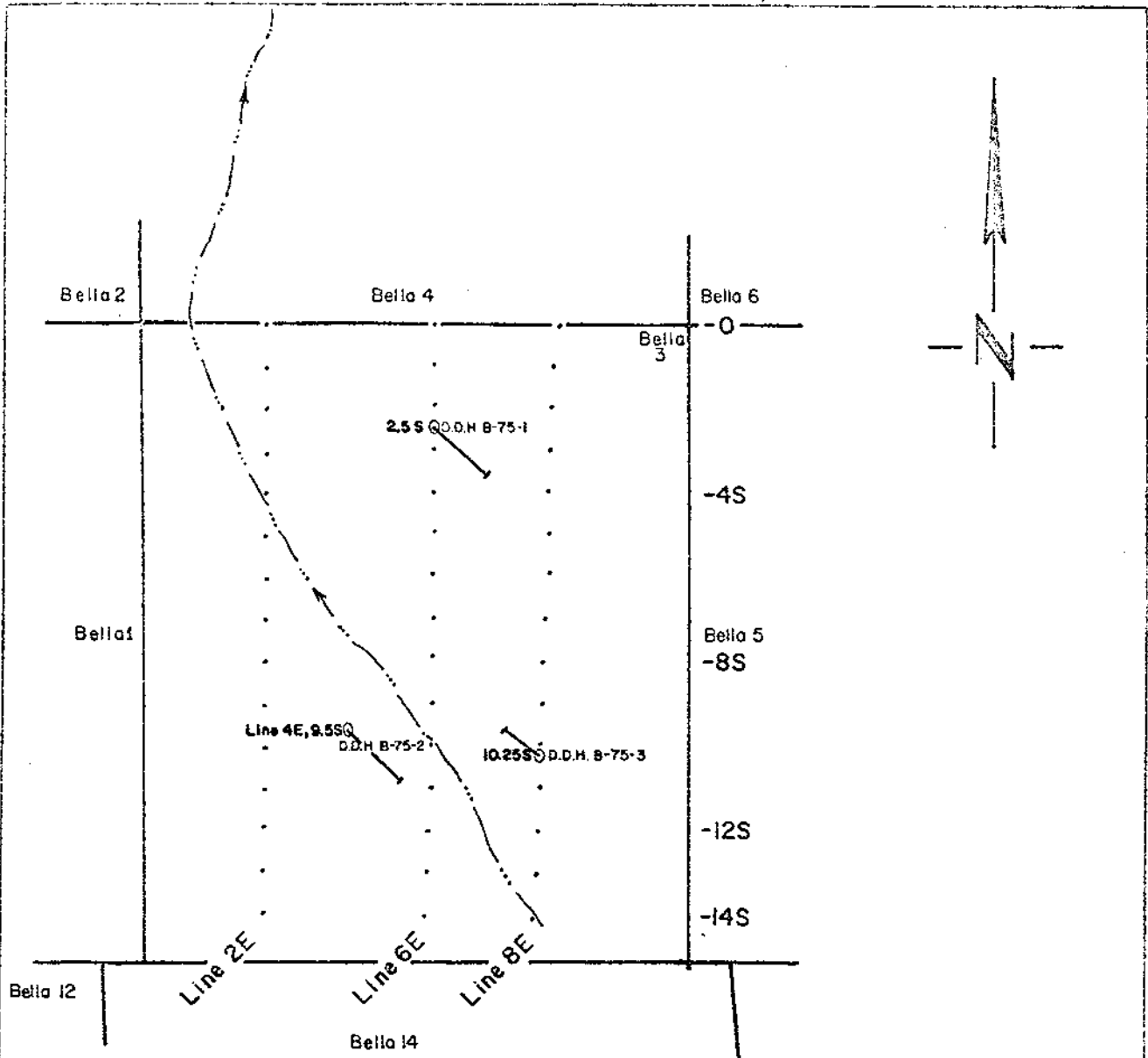


FIGURE 1

Department of
 Mines and Petroleum Resources
 ASSESSMENT REPORT
 BELLA AND MARINO CLAIMS
 Moresby Island,
 Queen Charlotte Islands
 NO. 5431 MAP 2 Scale: 1" = 1 mile

5431
 MAP 2



Department of
Mines and Petroleum Resources
ASSESSMENT REPORT

NO. 5431 MAP 3

FIGURE No. 2

Alfred O. Burgoyne

LEGEND

- Stream
- Diamond Drill Hole

5431
MAP 3

D.D.H. B-75-1 Bearing=130° true, Dip=-45°, Depth=250', Overburden=6'

D.D.H. B-75-2 Bearing=130° true, Dip=-45°, Depth=245'6", Overburden=40'

D.D.H. B-75-3 Bearing=310° true, Dip=-45°, Depth=150', Overburden=43'

**BELLA CLAIMS
1975
DIAMOND DRILL HOLE
LOCATIONS**

Scale. 0 400 800'

UMEX CORPORATION LTD.

Drawn by H. Holm
Date Feb.-March, 1975
Surveyed by B. Morehouse

DWG No

UNION MINIERE EXPLORATIONS AND MINING CORPORATION LIMITED
 DRILL RECORD.

AREA Bella Claims

Hole No. B75-1

Depth: 250'

Drilled By: R. Morehouse

ANOMALY:

Bearing and Dip: 130° True, -45°

Started: Feb. 10, 1975

Machine: Longyear-24

Described By:

CLAIM: Bella 3

Local Coord. X=6+00EY=2+50S Z=

Completed: Mar. 2, 1975

Diam Drill: AX core

R.S. Tolbert

Depth		% Core	Description & Lithology	Sample Footage MINIMUM	Assay	
From	To				ROCK	GR
					Au	PPM
0'	6'		<u>N.B.</u> - A magnet was quickly taken over whole rock section, with no effect. Overburden.	10- 20	<0.003	3
6'	13'6"		Dacite porphyry - greenish brown with speckled appearance due to 1/8" blebs of plagioclase(?). Limonite stained at 13'. Minor disseminated pyrite <5% of rock.	20- 30	<0.003	4
13'6"	14'		Clay seam(?) - broken core.	30- 40	<0.003	2
14'	19'6"		Porphyritic rhyolite - fleshy brown-grey in colour with disseminated pyrite arsenopyrite(?).	40- 50	<0.003	3
19'6"	63'		Dacite-rhyolite - aphanitic, grey-pinkish grey with slightly speckled appearance. Occasional carbonate seams, generally along core axis and diss. pyrite and arsenopyrite(?) - occasionally in seams at 45° to core axis. The pyrite and arsenopyrite account for 5-10% of the rock.	50- 60	<0.003	28
				60- 70	0.054	>500
				70- 80	0.003	60
				80- 90	0.003	30
				90-100	<0.003	27
				100-110	0.003	6
63'	64'		Carbonated rhyolite - 1" calcite vein trending 45° across core axis with stringers up the core giving rhyolite crumbly texture. Pyrite associated with fringes of calcite seams. Broken core.	110-120	<0.003	4
				120-130	<0.003	9
				130-140	<0.003	8
64'	57'6"		Dacite-rhyolite - similar to 19'6"-63'	140-150	<0.003	2
57'6"	68'6"		Rhyolite - yellowish green altered with disseminated pyrite. Broken core.	150-160	0.003	35
68'6"	72'		Dacite-rhyolite - similar to 19'6"-63'.	160-170	0.016	>500
72'	73'		Chloritized seams in rhyolite - black seams with pyrite, arsenopyrite(?) seams trending across core axis making up 20% of rock.	170-180	0.007	70
				180-190	0.007	100
73'	76'6"		Dacite - rhyolite - greyish-pinkish grey similar to 19'6"-63'.	190-200	<0.003	30
76'6"	77'6"		Rhyolite - greenish-yellow seams with whitish-yellow speckled rhyolite <5% pyrite.	200-210	<0.003	60

Depth		% of Core	Description & Lithology	Sample Footage Microclonation	Assay	
From	To				XX Au oz/ton	XX As PPM
77'6"	92'		Rhyolite - greyish-pinkish grey aphanitic microcrystalline with thin carbonated seams along core axis and minor pyrite arsenopyrite 5-10%. 90'-91' shows typical rhyolite flow texture.	210-220	0.014	>500
				220-230	0.075	>500
				230-240	0.005	65
92'	101'		Rhyolite - rhyolite breccia - brownish-grey, brecciated in part. Yellowish altered bands with 3/4" calcite vein at 98'6" and disseminated pyrite, arsenopyrite(?). Similar to Hole B74-2 - 85'6"-90'6".	240-250	<0.003	13
101'	112'		Rhyolite - pinkish-grey, similar to 77'6"-92'.			
112'	114'		Rhyolite-dacite - interfingering of pinkish grey rhyolite and darker grey-greish black dacite.			
114'	122'		Dacite - characteristically dark grey. Though aphanitic has characteristic "salt and pepper" texture and lacks pinkish colour suggestive of more K-rich feldspar that occurs in the rhyolite. 5-10% diss. pyrite.			
122'	125'		Rhyolite - pinkish grey aphanitic with 5% pyrite and arsenopyrite(?).			
125'	126'		Brecciated felsic zone - greyish rhyolite brecciated in part with 1 1/2" f.g. subvitreous flesh-coloured felsic seams and associated pyrite seams of 1/8".			
126'	131'		Dacite - dark grey with 5% disseminated pyrite.			
131'	132'		Brecciated felsic zone - similar to 125'-126' with two subvitreous felsic seams crossing core axis at low angle.			
132'	148'		Rhyolite - pinkish grey, speckled similar to 19'6"-63' with 5-20% disseminated pyrite and arsenopyrite(?).			
148'	149'		Brecciated felsic zone - greyish green felsic seams cross core axis along with pyrite seams.			
149'	160'		Rhyolite - fleshy grey rhyolite with flesh coloured subvitreous felsic portions. Pyrite disseminated and also in a few veins. The pyrite occurs in a few places as coarse crystals up to 1/2"-1".			

Depth		% of Core	Description & Lithology	Sample Footage XXXXXXXXXX	Assay XXXX Au oz/ton	XXX XK XXXX AS PPM
From	To					
160'	161'6"		Carbonated rhyolite - yellowish white carbonated zone. The rhyolite in part almost wholly replaced by calcite.			
161'6"	208'		Rhyolite - pinkish grey aphanitic rhyolite with diss. pyrite make up 5-10% of rock.			
208'	220'		Rhyolite breccia - pinkish grey brecciated rhyolite with subvitreous flesh coloured felsic veins one 1'6" crossing core. <5 pyrite, arsenopyrite(?).			
220'	228'		Carbonated rhyolite - rhyolite breccia - whitish grey with carbonate altering rock and diss. pyrite making up 5% of rock.			
228'	236'		Rhyolite and felsite zone - interfingering pinkish grey rhyolite and subvitreous flesh coloured felsite with <5% pyrite and arsenopyrite(?). Broken core.			
236'	240'		Rhyolite - rhyolite breccia - pinkish-grey with carbonate seam up core axis with <5% pyrite and arsenopyrite. Broken core.			
240'	243'		Pinkish brown rhyolite - with pyrite in seams and finely disseminated making up <10% of rock.			
243'	250'		Rhyolite - pinkish grey - pinkish brown rhyolite speckled in part with carbonate seams, one 1" across with (see sample 248') pyrite along edge and in cubes, in seams and disseminated accounting for 10-15% of rock. End of hole.			

Alfred A. Buzgala

UNION MINIERE EXPLORATIONS AND MINING CORPORATION LIMITED
DRILL RECORD.

AREA Bella Claims
Queen Charlotte Islands
ANOMALY:

Hole No. B75-2

Bearing and Dip: 130° True, -45°

Local Coord. X=4+00E Y=9+50S Z=

Depth: 245'6"

Started: March 9, 1975

Completed March 23, 1975 Diam Drill: AX-core

Drilled By: R. Morehouse

Machine: Longyear-24

Described By:

R.S. Tolbert

CLAIM: Bella 3

Depth		% Core	Description & Lithology	Sample footage	Dip Au oz/ton	Qty. of Sample Ag ppm
From	To					
0	40'		Overburden.			
40	46'		Dacite - weathered, crumbly, f.g., greenish-white with speckled appearance due to mafics. Pyrite <1%.	40- 50	<0.003	3
				50- 60	<0.003	4
46	52'		Dacite - fresh greyish-white speckled with pyrite, disseminated, accounting for 5-10% of rock.	60- 70	0.003	4
				70- 80	<0.003	6
52	58'		Felsite-dacite - flesh-coloured aphanitic felsic rock interveining with greenish microcrystalline dacite.	80- 90	<0.003	3
				90-100	<0.003	14
58	74'		Dacite - greyish-white microcrystalline speckled dacite with <2% disseminated pyrite.	100-110	<0.003	8
				110-120	<0.003	6
74	77'		Dacite - greyish-white microcrystalline. Broken core.	120-130	<0.003	2
77	94'		Dacite - greyish-white microcrystalline with <2% pyrite.	130-140	<0.003	2
94	97'		Carbonated dacite - with 5-10% pyrite.	140-150	<0.003	6
97	111'		Carbonated porphyritic rhyolite - grey-flesh coloured with quartz and mafic phenocrysts <1/8" across in a flesh-coloured aphanitic groundmass. Carbonate is in seams in part, trending up core axis.	150-160	<0.003	600
				160-170	<0.003	3
				170-180	<0.003	5
111	139'		Felsite-rhyolite - aphanitic greyish-purplish rock with pyrite finely disseminated accounting for <5% of rock. Most pyrite however is confined to the carbonate seams which trends up core axis and 45° to core axis.	180-190	<0.003	4
				190-200	<0.003	4
				200-210	<0.003	6
139	140'		Basalt - aphanitic greyish-black magnetic rock with disseminated pyrite accounting for <5% of rock.	210-220	<0.003	5
				220-230	<0.003	25
				230-240	<0.003	6
				240-245.5	<0.003	30

Hole B75-2

2
No.
of
Sampl

Depth		% of Core	Description & Lithology	Mineralization	Dip
From	To				
140	144'		Felsite-rhyolite - greyish-green aphanitic, fractured with carbonate seams up core axis.		
144	145'		Basalt - aphanitic greyish-black magnetic.		
145	147'8"		Felsite - rhyolite - similar to 140-144'.		
147'8"	149'		Diabase(?) - Altered speckled yellowish-green aphanitic magnetic rock with pyrite in <1/8" seams trending at 45° to core axis.		
149	154'		Carbonated rhyolite breccia - with numerous carbonate seams in fractured rock. Pyrite and arsenopyrite(?) disseminated and in carbonate seams. One 3" calcite vein at 149'6" trending at 45° to core axis. 15-20% of rock pyrite-arsenopyrite(?).		
154	156'		Crumbly rhyolite breccia - crumbled mass of carbonated pyritized rhyolite breccia. Broken core.		
156	162'		Rhyolite-rhyolite breccia - greyish-purplish aphanitic fractured rock with pyrite disseminated and in carbonate seams accounting for 5-10% of rock. This rock is weakly magnetic. At 160'9", 1" carbonate vein trending at 45° to core axis brecciating rock.		
162	171'3"		Basalt - greyish-green aphanitic magnetic with 1/4" carbonate seams trending at 45° to core axis. Pyrite disseminated and in seams up core axis. Contact at 171'3" trends at 45° to core axis.		
171'3"	177'		Rhyolite - purplish-flesh coloured microcrystalline with pyrite mostly in seams.		
177	179'		Dacite - greenish microcrystalline speckled magnetic rock with pyrite in seams up core axis and associated with carbonate seams 45° to core axis. Pyrite accounts for <10% of rock.		
179	181'		Fracture dacite - grey with disseminated pyrite and pyrite in seams similar to 177-179'.		

Hole B75-2

3

Depth		% of Core	Description & Lithology	Mineralization	Dip	No. of Samples
From	To					
181	185'		Dacite - greenish-grey microcrystalline, magnetic, with carbonate seams <1/8" across crisscrossing rock.			
185	205'		Rhyolite breccia - grey microcrystalline - aphanitic, with fragments up to one foot across, generally less than 2". Disseminated pyrite and arsenopyrite(?) in seams parallel to and at 45° to core axis. Carbonate seams cross core at 10° to 60°.			
205	207'		Rhyolite - greyish-flesh coloured with disseminated pyrite. Flow banding(?) at 45° to core axis (see sample B75-2 - 206'). Pyrite also in epidotized seams <1/8" across.			
207	230'6"		Rhyolite breccia - flesh coloured-purplish with fragments up to 6" across. Carbonate seams <1/8" across throughout rock. Pyrite and arsenopyrite(?) disseminated throughout rock.			
230'6"	245'6"		Rhyolite - purplish-pinkish tan in colour, microcrystalline speckled in part. It is altered by epidote which occurs in blebs and seams. Pyrite, arsenopyrite(?) is disseminated throughout. In parts accounts for 15% of rock. A few carbonate seams <1/8" across, crossing core at 20-45°. This rock is very similar to that obtained in the bottom of the previous hole, B75-1. End of hole.			

Alfred L. Bingham

UNION MINIERE EXPLORATIONS AND MINING CORPORATION LIMITED
DRILL RECORD.

AREA Bella Claims

Hole No. B75-3

Depth: 150'

Drilled By: R. Morehouse

ANOMALY:

Bearing and Dip: 310° True, -45°

Started: March 27, 1975

Machine: Longyear-24

Described By:

CLAIM: Bella 3

Local Coord. X=8+00E Y=10+25S Z=

Completed: April 7, 1975 Diam Drill: AX Core

R.S. Tolbert

Depth		% Core	Description & Lithology	Mineralization Sample Footage	Dip Au oz/ton	# of As ppm
From	To					
0	42'		Overburden.			
42	43'		Rhyolite-rhyolite breccia - coarse-grained pink porphyritic with aphanitic groundmass. It is rust stained and crumbly containing <1% pyrite.	42- 50	0.005	65
				50- 60	0.003	18
43	58'		Rhyolite-rhyolite breccia - coarse-grained pink, crumbly, showing prominent flowbanding, trending 45° to core axis (i.e., dip near vertical). It contains chloritized mafic blebs up to 1" long. with disseminated pyrite mostly preferring mafic portions of rock.	60- 70	<0.003	6
				70- 80	0.032	4
				80- 90	<0.003	8
				90-100	<0.003	275
58	66'		Rhyolite breccia - coarse-grained pink-tan fragmental crumbly rock with prominent flowbanding. Pyrite <5% of rock.	100-110	0.007	300
				110-120	0.012	>500
66	78'		Rhyolite - light grey, crumbly aphanitic with greenish black chloritized blebs <1/8" with pyrite accounting for <5% of rock.	120-130	0.005	25
				130-140	0.003	22
78	79'		Andesite - greenish grey, granular, compact, magnetic and partially epidotized. <1% pyrite (dyke?).	140-150	0.013	>500
79	85'		Dacite porphyry - light greyish brown - dark grey with prominent greenish <1/8" plagioclase in a finer grained groundmass. Minor pyrite.			
85	89'		Rhyolite - light brownish-grey, aphanitic with flowbanding and <1% pyrite.			
89	100'		Rhyolite - light grey-flesh coloured aphanitic rock with disseminated pyrite in cubes <1/16"-1/4" in size accounting for 5-10% of rock.			
100	101'		Carbonated rhyolite - carbonate seams up to 1" across crossing core perpendicular to core axis with minor disseminated pyrite.			

Hole B75-3

Depth		% of Core	Description & Lithology	Mineralization	Dip	No. of Sample
From	To					
101	114'		Rhyolite - grey-light tan aphanitic with thin carbonate seams $<1/8"$ across crossing core axis at 45° . Disseminated pyrite accounts for 5-10% of rock.			
114	116' 6"		Rhyolite - fleshy pink-tan aphanitic with 7 carbonate seams $<1/8"$ across crossing core at 20° (i.e., 70° dip). Minor disseminated pyrite and greyish metallic prismatic needle-like arsenopyrite associated with carbonate seams.			
116' 6"	125' 3"		Rhyolite - greyish-tan aphanitic similar to 104-114' with pyrite accounting for 5-10% of rock.			
125' 3"	136'		Andesite - dark greyish, microcrystalline, granular, compact, partially epidotized and magnetic with $<1\%$ pyrite and pyrite band at 131' 4" $1/4"$ wide.			
136	140' 5"		Rhyolite - greyish tan aphanitic with mafic blebs up to 1" long and $<5\%$ pyrite.			
140' 5"	146'		Rhyolite-dacite - greyish aphanitic with mafic pseudomorphs(?) of plagioclase. 5-10% disseminated pyrite.			
146	150'		Dacite - altered dark grey-blackish, granular with carbonate seams along and at 45° to core axis. Pyrite and arsenopyrite are disseminated throughout rock and comprise 5-10% of rock. End of hole.			

Alfred J. Buzgoyne

APPENDIX II

STATEMENT OF DIAMOND DRILLING COSTS

Labour:	R. Morehouse, 59 days @ \$ 54.65/day = \$3,224.35	
	J. Trinco, 49 days @ 37.26/day = 1,825.74	
	J. Kinneard, 26 days @ 30.15/day = 783.90	
	C. Gale, 23 days @ 30.15/day = 693.45	
	P. Salmi, 18 days @ 27.00/day = 486.00 . . .	\$ 7,013.44
Engineering		
Costs:	A. Burgoyne, 1 day @ \$100.00/day = \$ 100.00	
	P. Master, 2 days @ 80.75/day = 161.50	
	H. Holm, 3 days @ 48.60/day = 145.80 . . .	407.30
Accommodations (Food and Room)		1,465.38
Vehicle and Fuel Costs		264.91
Diamond Drill Bits		450.00
Diamond Drill and Pump Equivalents Rental Costs		
59 days @ \$25.00/day		1,475.00
Assay Costs - 56 Assays for Gold and Arsenic @ \$5.40/sample		302.40
Helicopter Costs - 14 hours @ \$278/hour		3,892.00
		<u>\$15,270.43</u>