

**HUGH  
HAMILTON  
LIMITED**

FORESTRY AND MAPPING

SUITE 5, 3046 EDMONTON BOULEVARD \* NORTH VANCOUVER, B. C. \* 980-3144

April 2nd 1975

Account #75-044

In Account With:

Canadian Superior Exploration Ltd.  
#2201 - 1177 West Hastings Street  
Vancouver 1, B.C.

To Mapping Services:

Project #75-005

Holmes Creek orthophoto map and 50 foot  
contours as quoted in letter of January  
31st, 1975.

\$755.00



HUGH  
HAMILTON  
LIMITED

FORESTRY AND MAPPING

SUITE 5, 3046 EDGEMONT BOULEVARD \* NORTH VANCOUVER, B. C. \* 980-3144

April 21, 1975

Account #75-052

In Account With:

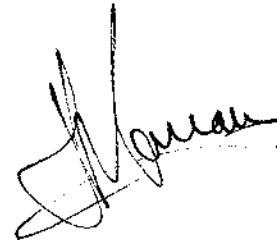
Canadian Superior Exploration Ltd.  
#2201-1177 West Hastings St.  
Vancouver 1, B.C.

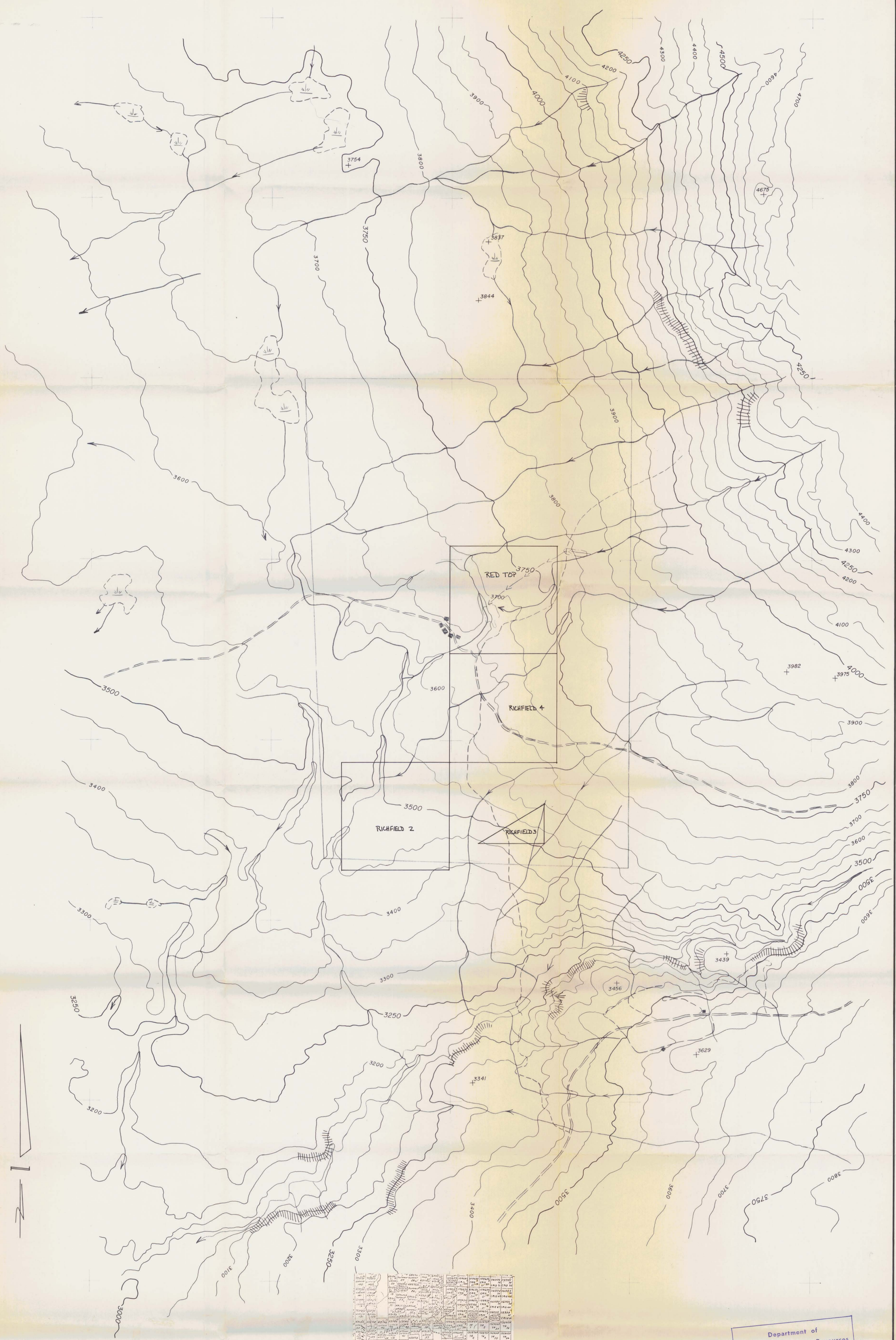
To Mapping Services:

Holmes Creek Project (#75-005)

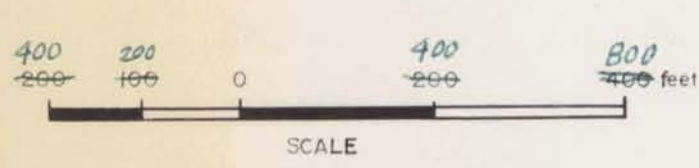
Supply of Topographic map to accompany  
orthophoto in additon to quote of  
January 31, 1975.  
Drafting and supply of mylar plus  
two copies.

\$75.20

A handwritten signature in dark ink, appearing to read "J. G. G. G.", is written over a horizontal line. The signature is stylized and somewhat cursive.



DEPARTMENT OF MINES AND PETROLEUM RESOURCES  
 VICTORIA, B. C.  
 MINERAL CLAIM MAP 93L/9W(M)



Department of  
 Mines and Petroleum Resources  
 ASSESSMENT REPORT  
 NO. 5438 MAP 1

5438 MAP 1

CANADIAN SUPERIOR EXPLORATION LTD.
TOPLEY RICHFIELD PROSPECT
TOPOGRAPHY
23/04/75

Compiled by HUGH HAMILTON LTD. in  
 conjunction with an Orthophotograph  
 produced April 1, 1975.  
 Project No. 75-005.

FIGURE 1