

5446

82K/15W

REPORT ON GEOCHEMICAL SURVEY  
OF THE RENN PROPERTY  
FOR  
MEDESTO EXPLORATION LTD.

by: Dr. E. E. Pelzer, P. Geol.

Brunswick Resources Ltd.

October, 1974.

*E. E. Pelzer*

Department of  
Mines and Petroleum Resources  
ASSESSMENT REPORT  
NO. 5446 MAP \_\_\_\_\_

## INTRODUCTION

An option on the Renn Property, consisting of fifty mineral claims, was acquired by Medesto Exploration Ltd. in early 1974. The property was optioned because it adjoined and lay on structural strike with the known deposit of the Ruth-Vermont mine (Columbia River Mines Ltd.), was underlain by the Mt. Nelson Formation which has hosted the Mineral King and Paradise mines in the same general area, contained surface showings of silver-rich galena, and was readily accessible for detailed exploration via a good gravelled road extending from Parsons, B.C. to the Ruth-Vermont mine.

Following acquisition of the option, plans were made for an initial phase of detailed exploration to consist of establishment of a base line, detailed geological mapping, and a geochemical survey of the indicated primary area centering on the known surface showings. This report is intended to summarize the results of this initial phase of detailed exploration.

## GEOLOGY

As indicated, the Renn Property is underlain by the Mt. Nelson Formation, of Precambrian age. This formation includes dolomitic limestone (which appears to be the most favourable host rock for mineralization), quartzites, and argillites which vary widely in the degree of slaty cleavage. On and in the vicinity of the Renn Property argillite is the most prominent lithology, although both limestones and quartzites have been observed. The Ruth-Vermont orebody to the north of the property consists of replacement ore in a thin (50 ft. <sup>±</sup>) limestone, with apophyses of vein material which, in general, carry higher silver values than the replacement ore.

Previous regional mapping had indicated a series of folds striking approximately N40°W. These folds are superimposed on an overall regional dip which is to the southwest. Most of the folds are relatively low amplitude, and appear to persist for relatively few miles along strike, i.e. they plunge out in both directions. The Ruth-Vermont orebody is located on and along the southwest limb of a synclinal fold. The known surface showings on the Renn Property are all closely associated with a synclinal axis or axes, but at the moment it is considered unlikely that this is a single connected synclinal fold and it is not known whether there is a direct connection with the Ruth-Vermont syncline.

Geological investigations during the 1974 season were adversely affected by inclement weather during each visit to the property. As a result, the geological mapping is as yet incomplete, being largely confined to the jeep trail. Results are shown on the Surface Geology map,

and may be summarized as follows:

- 1) The dominant strike is N40°W to N50°W, with a dominant or regional dip to the southwest in the range of 50°.
- 2) Dip reversals due to small amplitude folds are rather numerous. These folds are generally accompanied by shearing on one or both flanks, and this shearing carries the known surface showings.
- 3) Several thin limey beds have been located near the north end of the baseline. In view of the N40°W regional strike and the topographic slope, the surface trace of these beds will project into the area to the west of the baseline.
- 4) No dominant regional plunge is evident on the work to date; thus it is impossible to say at this point where the Ruth-Vermont limestone should be expected to outcrop on the property.
- 5) The folds which have been mapped appear to be mostly of rather low amplitude and narrow width, and may well prove ultimately to be small drag folds on the limb of a larger structure.

It should be noted that rock outcrop is limited to an estimated 5 percent of the surface area, and that much of the exposure is due to trenching and road-building. It should also be noted that the slaty cleavage of the argillites is often so intense as to completely obscure the bedding, so that considerable caution is necessary in mapping true bedding attitudes.

## SOIL PROFILE

Examination early in the 1974 season revealed a relatively simple soil profile. In general, a thin "A<sub>1</sub>" zone (3" - 6") is underlain by an even thinner (2" - 4") light-coloured to almost white "A<sub>2</sub>" zone, and this rests on what may be described as a "B-C" zone of light brown to reddish-brown soil which is commonly, and almost always at higher elevations, admixed with angular fragments of weathered bedrock. Near the valley floor, and notably near the west end of Line 800 South, a very thick (up to 2 ft.) A<sub>1</sub> zone was encountered. Downslope of Line 200 South, the "B-C" zone carries less bedrock material, and becomes more truly a "B" type of soil.

In view of the decidedly U-shaped profile of Crystal Creek valley, with tributary hanging valleys cut off at an elevation of 7000 ft., it may be surmised that the soil profile is post-glacial and was developed on a scoured bedrock surface. No evidence of glacial deposits was observed in the course of the survey.

## SURVEY METHODS

A line spacing of 200 ft. with sampling every 25 ft. along each line was selected in view of the possibility of narrow but rich veins. Sample collectors were introduced to the soil profile and instructed to select the sample from the top few inches of the "B-C" zone. Lines were run perpendicular to a 2600 ft. baseline oriented parallel to the regional strike; line direction was controlled by compass, spacing by chain. Each 100 foot station was marked by plastic tape to facilitate relocation.

Samples were collected in heavy kraft bags which were sent to Loring Laboratories Ltd., Calgary for drying, sieving and analysis. Each sample, after drying, was sieved to minus 80 mesh and a 500 mg. portion selected for analysis. Digestion was in hot aqua regia for 2-1/2 hours, and subsequent analysis by atomic absorption spectrometry with appropriate standards.

It may be noted that duplicate samples were taken at stations 1000N and 1400S and that very close correspondence of values (see maps) for both Pb and Zn were obtained.

Short segments of line were sampled late in the season to check out previously-indicated anomalies at 100 ft. line spacing. The west end of Line 800S was also re-sampled at this time because of indications that initial sampling had been in the thick A<sub>1</sub> zone. The re-sampling assuredly reached the "B-C" zone, and the contrast in values is quite remarkable.

## DISCUSSION OF RESULTS

Results are presented on the contoured maps 'Pb (ppm) in "B-C" Zone' and 'Zn (ppm) in "B-C" Zone'. For lead, a background of 35 ppm was selected by averaging non-anomalous values on several lines, and for zinc a background of 80 ppm was selected in the same manner. Both maps were then contoured with 2X, 5X, 10X and 20X background contours.

Three principal anomalous areas, one of which may be separated into two different areas, are labelled "A", "B<sub>1</sub>", "B<sub>2</sub>" and "C" on the maps.

Anomaly "A" passes immediately to the east of 1000N on the baseline. The anomaly is 400 ft. long and open at the north end. The zone appears much more anomalous with respect to lead than with respect to zinc, peaking at 137X background at 600N425E. The zinc peak at 1000N 75E is, by comparison, only 28X background. Both the narrow width of this anomaly and the N85°W trend, which is incompatible with bedding traces in the vicinity, suggest that this anomaly could represent a vein.

Anomaly "B<sub>1</sub>" peaks at the rather remarkable value of 26,500 ppm. (2.65%) lead and 12,675 ppm. (1.26%) zinc at station 200N22-W. These values represent 757X background and 158X background respectively. The anomaly disappears abruptly between our check line at 300N and the 400N line. To the south, it is weak on 200S, then redevelops as anomaly "B<sub>2</sub>" which peaks at 400S125W at values of 105X background for lead and 33X background for zinc. The combined B<sub>1</sub> - B<sub>2</sub> anomaly is 1100 ft. in length with the south end not yet defined. Anomaly B<sub>2</sub> is closely coincident with one of the known surface showings on the property, which

consists of stringers of galena up to 1" in width near the axis of a sharp syncline. This anomaly has also been drilled but unfortunately only verbal reports indicating very poor core recovery are available on this as on other drill holes on the property.

Anomaly "C" has a length of 600 ft. and is open at the south end. The peak values of 127X background for lead and 80X background for zinc occur at 800S775W, which is the most southerly line intersecting the anomaly. This anomaly is notably wider than the others. It is interesting to note too that in the earlier-sampled  $A_1$  zone at the west end of 800 South the anomaly is still evident for zinc, but not for lead.

There are several other anomalies of potential interest within the mapped area, although of secondary interest to those discussed above. To the east of and parallel to Anomaly  $B_2$  is a distinct zinc anomaly which reaches 10X background on three separate lines. In view of the results from deeper sampling at the west end of 800 South, some check sampling at and immediately to the east of 1400S is indicated.

It is worth noting that of the three known surface showings in the area, two are not closely coincident with better geochemical anomalies. This offers some promise that the better anomalies are related to better mineralization of the bedrock.



## CONCLUSIONS AND RECOMMENDATIONS

The 1974 soil geochemical survey on the Renn Property has outlined three excellent anomalous trends which show good persistence along strike and peak values exceeding twenty times background for both lead and zinc. One of these anomalies reaches the rather incredible value of 2.65% lead in the soil sample, representing 757 times the background value.

Although additional checking, infilling and extensions of this survey are justified it seems more appropriate that the 1975 season be devoted to drilling the present anomalies to see whether they are associated with economic mineralization.

Accordingly, the following recommendations are made:

- 1) As early as possible in the 1975 season additional detailed geological mapping should be done to obtain information which might assist in finalizing test hole bearings and inclinations.
- 2) Tentatively, and subject to changes resulting from the above, four holes are recommended:
  - a) at 975N40E to check Anomaly A;
  - b) at 250N250W to check Anomaly B<sub>1</sub>;
  - c) at 380S220W to check Anomaly B<sub>2</sub>;
  - d) at 800S725W to check Anomaly C.

A total of 450 ft. of drilling is visualized for this program, and a contingency of 200 ft. should be allowed

for additional checking in the event of blank holes or  
lost holes.

Any further recommendations should logically be dependent on  
the results of this drilling program.

To: MEDESTO EXPLORATIONS,  
 215 A-10th Street N.W.,  
 CALGARY, Alberta  
 Attn: Mr. G. Evans



File No. 8300  
 Date July 2, 1974  
 Samples Geo-Chems

**Certificate of  
 ASSAY OF  
 LORING LABORATORIES LTD.**

-1-

SAMPLE No.	PPM	PPM
	Pb	Zn
ON 25 E	50	64
50	31	50
75	12	75
100	74	60
125	18	175
150	14	52
175	18	93
200	20	79
225	26	93
250	25	98
275	40	86
300	36	98
325	26	55
350	26	57
375	60	77
400	34	57
425	40	98
450	26	81
475	58	84
500	36	28
525	51	67
550	72	93
575	34	95
600	21	98
625	23	350
650	17	95
675	28	86
700	20	67
725	21	84
750	58	44
775	17	64

**I Hereby Certify** THAT THE ABOVE RESULTS ARE THOSE  
 ASSAYS MADE BY ME UPON THE HEREIN DESCRIBED SAMPLES . . . .

Rejects Retained one month.  
 Pulps Retained one month  
 unless specific arrangements  
 made in advance.

*[Signature]*  
 Licensed Assayer of British Columbia

To: MEDESTO EXPLORATIONS,  
 215 A-10th Street N.W.,  
 CALGARY, Alberta

File No. 8300  
 Date July 2, 1974  
 Samples Geo-Chems



Attn: Mr. G. Evans

Certificate of  
 ASSAY OF  
 LORING LABORATORIES LTD.

-2-

SAMPLE No.	PPM Pb	PPM Zn
ON 800 E	20	60
200 N 25 E	65	130
50	28	103
75	40	95
100	21	81
125	15	60
150	20	67
175	29	50
200	325	200
225	29	77
250	28	73
275	65	98
300	26	69
ON 0 W	290	120
200 N 25 W	44	113
50	39	98
75	38	113
100	26	113
200	170	548
225	26500 = 2.65 % !!	12675 = 1.26 % !!
250	190	448
275	39	126
300	36	123
325	23	90
350	28	113
375	960	259
400	17	120
450	12	224
475	36	116
500	33	90
525	29	75
550	50	113

**I Hereby Certify** THAT THE ABOVE RESULTS ARE THOSE  
 ASSAYS MADE BY ME UPON THE HEREIN DESCRIBED SAMPLES . . . .

*Edna J. Mac*  
 Licensed Assayer of British Columbia

Rejects Retained one month.  
 Pulps Retained one month  
 unless specific arrangements  
 made in advance.

To: MEDESTO EXPLORATIONS,  
 215 A-10th Street N.W.,  
 CALGARY, Alberta

File No. 8300  
 Date July 2, 1974  
 Samples Geo-Chems



Attn: Mr. G. Evans

Certificate of  
**ASSAY OF**  
**LORING LABORATORIES LTD.**

-3-

SAMPLE No.	PPM Pb	PPM Zn
200 N 575 W	26	103
600	21	73
625	28	77
650	20	49
675	33	93
700	36	93
725	23	95
750	28	88
775	17	55
800	25	103
825	18	73
850	34	88
875	31	123
900	28	106
925	45	108
950	45	207
975	28	165
1000	96	252
210 N 125 W	28	195
150	33	432
230 N 175 W	102	343
425	68	190
400 N 25 W	23	73
50	26	50
75	26	103
100	23	117
125	25	103
150	40	400
175	18	67
200	26	77
225	12	75

**I Hereby Certify** THAT THE ABOVE RESULTS ARE THOSE  
 ASSAYS MADE BY ME UPON THE HEREIN DESCRIBED SAMPLES . . . .

Rejects Retained one month.

Pulps Retained one month  
 unless specific arrangements  
 made in advance.

*Edmond J. ...*

Licensed Assayer of British Columbia



To: MEDESTO EXPLORATIONS,  
215 A-10th Street N.W.,  
CALGARY, Alberta

File No. 8300  
Date July 2, 1974  
Samples Geo-Chems

Attn: Mr. G. Evans

Certificate of  
ASSAY of  
LORING LABORATORIES LTD.

-4-

SAMPLE No.	PPM	PPM
	Pb	Zn
400 N 250 W	18	67
275	18	97
300	20	90
325	23	112
350	34	160
375	45	200
400	425	507
425	155	155
450	33	44
475	23	75
500	45	35
525	29	77
550	45	117
575	39	103
600	34	97
625	28	95
650	25	95
675	26	98
700	73	103
725	28	69
750	39	109
775	28	95
800	36	79
825	23	90
850	29	88
875	31	106
900	105	123
925	29	88
950	23	66
975	28	106
1000	33	98

I Hereby Certify THAT THE ABOVE RESULTS ARE THOSE  
ASSAYS MADE BY ME UPON THE HEREIN DESCRIBED SAMPLES . . . .

Rejects Retained one month.  
Pulps Retained one month  
unless specific arrangements  
made in advance.

  
Licensed Assayer of British Columbia

To: MEDESTO EXPLORATIONS,  
 215 A-10th Street N.W.,  
 CALGARY, Alberta



File No. 8300  
 Date July 2, 1974  
 Samples Geo-Chems

Attn: Mr. G. Evans

**Certificate of  
 ASSAY of  
 LORING LABORATORIES LTD.**

-5-

SAMPLE No.	PPM PB	PPM Zn
0 25 W	45	88
50	57	113
75	210	277
100	45	86
125	36	93
150	33	116
175	31	93
200	570	500
225	190	283
250	53	120
275	46	108
300	55	69
325	68	88
350	165	536
375	850	309
400	72	103
425	94	113
450	36	64
475	34	120
500	21	81
525	18	47
550	79	309
575	240	1150
600	56	409
650	48	416
675	89	850
700	125	850
725	65	180
750	79	364
775	31	108
800	33	170

**I Hereby Certify** THAT THE ABOVE RESULTS ARE THOSE  
 ASSAYS MADE BY ME UPON THE HEREIN DESCRIBED SAMPLES . . . .

Rejects Retained one month.  
 Pulps Retained one month  
 unless specific arrangements  
 made in advance.

*[Signature]*  
 Licensed Assayer of British Columbia

To: MEDESTO EXPLORATIONS, .....

215A-10th St. N.W., .....

CALGARY, Alta. ....

ATTN: Mr. G. Evans .....



File No. 8355 .....

Date July 4, 1974 .....

Samples Geo-chems .....

Certificate of  
ASSAY OF  
LORING LABORATORIES LTD.

-1-

SAMPLE No.	PPM	PPM
	Pb	Zn
200S	72	130
200S 25E	39	97
50	33	109
75	66	145
100	51	125
125	140	190
150	58	117
175	26	121
200	50	79
225	85	170
250	66	112
275	68	125
300	74	97
325	62	195
350	115	235
375	51	109
400	275	145
425	51	67
450	53	97
475	78	93
500	180	135

I Hereby Certify THAT THE ABOVE RESULTS ARE THOSE  
ASSAYS MADE BY ME UPON THE HEREIN DESCRIBED SAMPLES . . . .

Rejects Retained one month.  
Pulps Retained one month  
unless specific arrangements  
made in advance.

*E. L. McIsaac*

Licensed Assayer of British Columbia



To: MEDESTO EXPLORATIONS,

File No. 8355

Date July 4, 1974

Samples Geo-chems



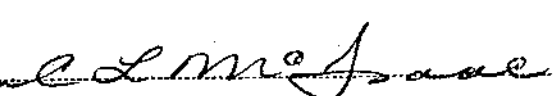
Certificate of  
ASSAY of  
LORING LABORATORIES LTD.

-2-

SAMPLE No.	PPM Pb	PPM Zn
200S 525E	39	84
550	46	135
575	36	93
600	40	112
625	36	64
650	28	71
675	23	84
700	25	93
725	36	93
750	51	64
775	50	77
800	26	52
825	25	34
850	79	71
875	40	81
900	28	88
925	33	88
950	25	60
975	29	54
1000	44	57
400S OE	58	230

I Hereby Certify THAT THE ABOVE RESULTS ARE THOSE  
ASSAYS MADE BY ME UPON THE HEREIN DESCRIBED SAMPLES . . . .

Rejects Retained one month.  
Pulps Retained one month  
unless specific arrangements  
made in advance.

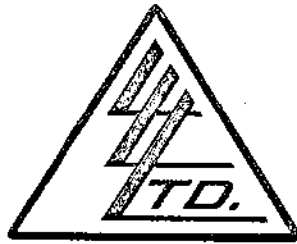
  
Licensed Assayer of British Columbia

To: MEDESTO EXPLORATIONS

File No. 8355

Date July 4, 1974

Samples Geo-chems



Certificate of ASSAY of LORING LABORATORIES LTD.

-3-

SAMPLE No.	PPM	
	Pb	Zn
400S 25E	60	230
50	29	207
75	26	100
100	28	126
125	51	113
150	28	120
175	535	975
200	720	1090
275	39	103
300	58	73
325	51	62
350	45	93
375	65	113
400	60	116
425	39	88
450	36	59
475	40	75
500	42	106
525	53	90
550	44	79
575	33	90

I Hereby Certify THAT THE ABOVE RESULTS ARE THOSE ASSAYS MADE BY ME UPON THE HEREIN DESCRIBED SAMPLES . . . .

Rejects Retained one month. Pulps Retained one month unless specific arrangements made in advance.

*[Signature]*

Licensed Assayer of British Columbia

To: MEDESTO EXPLORATIONS.

File No. 8355

Date July 4, 1974

Samples Geo-chems



Certificate of  
ASSAY of  
LORING LABORATORIES LTD.

-4-

SAMPLE No.	PPM	PPM
	Pb	Zn
400S 600E	23	54
650	21	88
675	14	32
700	26	79
725	28	49
775	29	67
800	23	88
825	26	88
850	25	100
875	44	77
900	36	77
925	29	81
950	23	77
1400S	39	1060
25E	23	1295
75	26	247
100	33	315
125	28	185
150	26	160
175	33	121
200	42	103

I Hereby Certify THAT THE ABOVE RESULTS ARE THOSE  
ASSAYS MADE BY ME UPON THE HEREIN DESCRIBED SAMPLES . . . .

Rejects Retained one month.

Pulps Retained one month  
unless specific arrangements  
made in advance.

*E. L. McFadden*

Licensed Assayer of British Columbia

To: MEDESTO EXPLORATIONS.

File No. 8355

Date July 4, 1974

Samples Geo-chems



Certificate of  
ASSAY  
LORING LABORATORIES LTD.

-5-

SAMPLE No.	PPM Pb	PPM Zn
1400S 225E	39	97
250	48	112
275	29	93
300	38	67
325	21	62
350	36	88
375	29	135
400	58	200
425	57	103
450	39	93
475	33	88
500	29	88
525	36	86
550	39	73
575	74	95
600	40	81
625	38	77
650	36	71
675	31	77
700	36	67
725	38	57

I Hereby Certify THAT THE ABOVE RESULTS ARE THOSE  
ASSAYS MADE BY ME UPON THE HEREIN DESCRIBED SAMPLES . . . .

Rejects Retained one month.  
Pulps Retained one month  
unless specific arrangements  
made in advance.

*E. L. M. J. A. C.*

Licensed Assayer of British Columbia

To: MEDESTO EXPLORATIONS.

File No. 8355

Date July 4, 1974

Samples Geo-chems



Certificate of  
ASSAY of

LORING LABORATORIES LTD.

-6-

SAMPLE No.	PPM Pb	PPM Zn
1400S 750E	40	84
775	48	98
800	45	93
825	42	97
850	33	81
875	36	69
900	33	67
925	66	62
950	36	43
975	44	77
1000	45	64
390S 250E	165	103
750	29	75
1600S 000E	21	295
25	46	144
50	15	95
75	30	188
100	21	200
125	21	160
150	19	91
175	14	14

I Hereby Certify THAT THE ABOVE RESULTS ARE THOSE  
ASSAYS MADE BY ME UPON THE HEREIN DESCRIBED SAMPLES . . . .

Rejects Retained one month.

Pulps Retained one month  
unless specific arrangements  
made in advance.

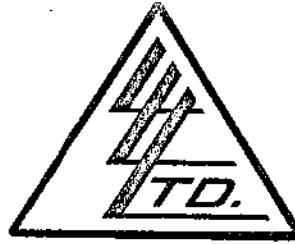
*E. L. McFadden*  
Licensed Assayer of British Columbia

To: MEDESTO EXPLORATIONS.

File No. 8355

Date July 4, 1974

Samples Geo-chems



Certificate of  
ASSAY of  
LORING LABORATORIES LTD.

-7-

SAMPLE No.	PPM Pb	PPM Zn
1600S 200E	23	75
225	21	86
250	29	79
275	33	73
300	33	67
350	180	180
375	74	175
400	50	126
425	31	150
450	25	106
475	48	98
500	29	95
525	17	54
550	25	64
575	26	49
600	23	50
625	26	44
650	26	57
675	28	75
700	25	62
725	20	36

I Hereby Certify THAT THE ABOVE RESULTS ARE THOSE  
ASSAYS MADE BY ME UPON THE HEREIN DESCRIBED SAMPLES . . . .

Rejects Retained one month.

Pulps Retained one month  
unless specific arrangements  
made in advance.

*Edmead*  
Licensed Assayer of British Columbia

To: MEDESTO EXPLORATIONS.

File No. 8355

Date July 4, 1974

Samples Geo-chems



Certificate of  
ASSAY of  
LORING LABORATORIES LTD.

-8-

SAMPLE No.	PPM	PPM
	Pb	Zn
1600S 750E	33	79
775	23	55
800	29	62
825	33	79
850	42	88
900	17	47
950	29	46
975	35	30
1000	38	108
✓ 185S 250W	20	98
+ 190S 100W	21	95
200S 25 W	72	309
50	42	150
75	38	106
x 150	29	49
175	44	95
200	300	145
✓ 225	26	67
275	28	60
300	21	73
325	25	103

I Hereby Certify THAT THE ABOVE RESULTS ARE THOSE  
ASSAYS MADE BY ME UPON THE HEREIN DESCRIBED SAMPLES . . . .

Rejects Retained one month.  
Pulps Retained one month  
unless specific arrangements  
made in advance.

*E. L. M. Isaac*

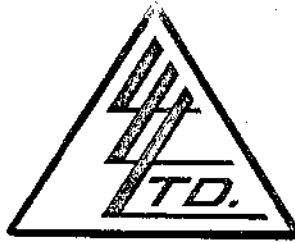
Licensed Assayer of British Columbia

To: MEDESTO EXPLORATIONS.

File No. 8355

Date July 4, 1974

Samples Geo-chems



Certificate of ASSAY OF LORING LABORATORIES LTD.

-9-

SAMPLE No.	PPM Pb	PPM Zn
200S 350W	25	100
375	29	75
400	23	73
425	21	84
450	20	71
475	23	73
500	26	77
525	23	93
550	25	100
575	21	79
600	20	81
625	81	283
650	42	195
675	250	387
700	445	875
725	180	386
750	28	140
775	31	125
800	23	155
825	23	103
850	36	150

I Hereby Certify THAT THE ABOVE RESULTS ARE THOSE ASSAYS MADE BY ME UPON THE HEREIN DESCRIBED SAMPLES . . . .

Rejects Retained one month. Pulp Retained one month unless specific arrangements made in advance.

*E. L. McJannet*

Licensed Assayer of British Columbia

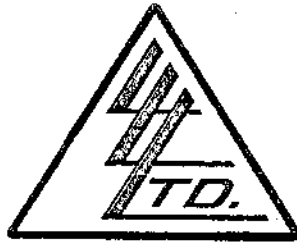


To: MEDESTO EXPLORATIONS.

File No. 8355

Date July 4, 1974

Samples Geo-chems



Certificate of  
ASSAY of  
LORING LABORATORIES LTD.

-10-

SAMPLE No.	PPM Pb	PPM Zn
200S 875W	165	548
900	165	900
925	225	295
950	210	265
400S 25W	107	1450
50	78	259
75	230	170
125	3700 = 0.37 %	2680 = 0.27 %
150	510	378
175	275	322
200	1850	322
225	36	135
250	33	170
275	34	155
300	29	125
325	28	121
350	66	130
375	29	109
400	26	100
425	20	97
450	29	90

I Hereby Certify THAT THE ABOVE RESULTS ARE THOSE  
ASSAYS MADE BY ME UPON THE HEREIN DESCRIBED SAMPLES . . . .

Rejects Retained one month.  
Pulps Retained one month  
unless specific arrangements  
made in advance.

*[Signature]*  
Licensed Assayer of British Columbia

To: MEDESTO EXPLORATIONS.



File No. 8355

Date July 4, 1974

Samples Geo-chems

Certificate of  
ASSAY OF  
LORING LABORATORIES LTD.

-11-

SAMPLE No.	PPM Pb	PPM Zn
400S 475W	39	113
500	33	170
525	62	165
550	28	170
575	34	165
600	780	322
625	94	160
650	68	400
675	500	1260
700	1620	1350
725	530	1120
750	360	1260
775	370	825
800	40	185
825	29	235
850	33	135
875	40	175
900	230	925
925	230	483
950	230	875
1200S 0 W	42	394

I Hereby Certify THAT THE ABOVE RESULTS ARE THOSE  
ASSAYS MADE BY ME UPON THE HEREIN DESCRIBED SAMPLES . . . .

Rejects Retained one month.  
Pulps Retained one month  
unless specific arrangements  
made in advance.

*a Loring*

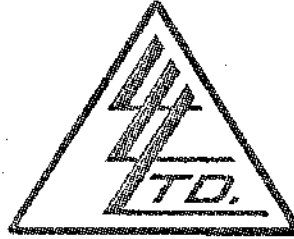
Licensed Assayer of British Columbia

To: MEBESTO EXPLORATION.

File No. 8355

Date July 4, 1974

Samples Geo-chems



Certificate of  
ASSAY OF  
LORING LABORATORIES LTD.

-12-

SAMPLE No.	PPM Pb	PPM Zn
1200S 25W	34	309
50	36	185
75	29	190
100	55	125
125	57	170
150	39	112
175	60	241
200	45	416
225	33	121
250	200	140
275	23	93
300	25	73
325	29	93
350	29	71
375	33	67
200S 125W	26	100
1400S 00-0	38	1000
25 W	33	364
50	72	536
75	48	265
100	23	103

I Hereby Certify THAT THE ABOVE RESULTS ARE THOSE  
ASSAYS MADE BY ME UPON THE HEREIN DESCRIBED SAMPLES . . . .

Rejects Retained one month.

Pulps Retained one month  
unless specific arrangements  
made in advance.

*Edm J. J. J.*

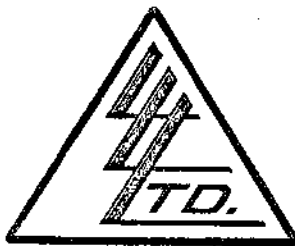
Licensed Assayer of British Columbia

To: MEDESTO EXPLORATIONS.

File No. 8355

Date July 4, 1974

Samples Geo-chems



Certificate of  
ASSAY of  
LORING LABORATORIES LTD.

-13-

SAMPLE No.	PPM Pb	PPM Zn
400S 125W	38	170
150	26	117
175	48	93
200	29	71
250	25	75
225	23	55
275	60	252
300	17	185
325	12	28
No Number	1050	490

I Hereby Certify THAT THE ABOVE RESULTS ARE THOSE  
ASSAYS MADE BY ME UPON THE HEREIN DESCRIBED SAMPLES . . . .

Rejects Retained one month.  
Pulps Retained one month  
unless specific arrangements  
made in advance.

*Edm J. Mac*

Licensed Assayer of British Columbia

To: MEDESTO EXPLORATIONS.  
 215A-10th St. N.W.,  
 CALGARY, Alta.

File No. . . . 8488  
 Date July 22, 1974  
 Samples Geo-chems



ATTN: G. Evans

Certificate of  
**ASSAY**  
 LORING LABORATORIES LTD.

-1-

SAMPLE No.	PPM	PPM
	Pb	Zn
1000N 650W	36	39
675	29	36
700	31	59
725	40	26
750	26	93
775	33	42
800	300	185
825	340	126
850	38	52
875	29	75
900	42	95
925	58	120
975	42	88
1000	65	150
600N 25W	29	50
50	26	73
75	44	28
100	21	19
125	31	66
150	25	60
175	31	60

**I** Hereby Certify THAT THE ABOVE RESULTS ARE THOSE  
 ASSAYS MADE BY ME UPON THE HEREIN DESCRIBED SAMPLES . . . .

Rejects Retained one month.  
 Pulps Retained one month  
 unless specific arrangements  
 made in advance.

*E. L. Meisner*  
 Licensed Assayer of British Columbia

To: MEDESTO EXPLORATIONS.

File No. 8488

Date July 22, 1974

Samples Geo-chems



Certificate of  
ASSAY of  
LORING LABORATORIES LTD.

-2-

SAMPLE No.	PPM Pb	PPM Zn
600N 200W	26	100
225	29	81
250	33	116
275	130	200
300	89	175
325	39	108
350	26	106
375	28	71
400	25	67
450	29	50
475	48	39
500	31	60
525	42	52
550	21	35
575	23	98
600	26	66
625	65	71
650	31	79
600N 25E	21	100
50	23	160
75	18	130

I Hereby Certify THAT THE ABOVE RESULTS ARE THOSE  
ASSAYS MADE BY ME UPON THE HEREIN DESCRIBED SAMPLES . . . .

Rejects Retained one month.  
Pulps Retained one month  
unless specific arrangements  
made in advance.

*C. L. McFarlane*  
Licensed Assayer of British Columbia

To: MEDESTO EXPLORATIONS.  
 \_\_\_\_\_  
 \_\_\_\_\_  
 \_\_\_\_\_



File No. 8488  
 Date July 22, 1974  
 Samples Geo-chems

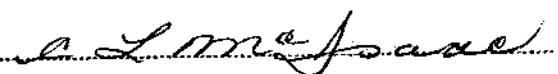
Certificate of  
**ASSAY OF**  
**LORING LABORATORIES LTD.**

-3-

SAMPLE No.	PPM Pb	PPM Zn
600N 125E	21	113
150	29	93
175	17	90
200	17	106
225	18	77
275	31	98
325	20	116
350	55	90
375	48	50
400	33	50
425	4800 = 0.48 %	425
475	42	123
500	28	180
525	66	356
550	48	90
575	46	113
600	48	103
675	73	88
700	74	62
725	25	95
750	39	100

**I Hereby Certify** THAT THE ABOVE RESULTS ARE THOSE  
 ASSAYS MADE BY ME UPON THE HEREIN DESCRIBED SAMPLES . . . .

Rejects Retained one month.  
 Pulps Retained one month  
 unless specific arrangements  
 made in advance.

  
 \_\_\_\_\_  
 Licensed Assayer of British Columbia

To: MEDESTO EXPLORATIONS.

File No. 8488

Date July 22, 1974

Samples Geo-chems



Certificate of ASSAY of LORING LABORATORIES LTD.

-4-

SAMPLE No.	PPM	PPM
	Pb	Zn
600N 775E	34	55
800	28	81
825	81	106
850	39	52
950	48	69
975	36	81
600N 675W	21	73
700	25	81
725	21	59
750	23	84
775	25	71
800	33	93
850	23	88
875	21	77
900	28	81
925	33	77
950	38	81
975	29	69
1000	25	88
580S 225E	33	116
250	33	73

I Hereby Certify THAT THE ABOVE RESULTS ARE THOSE ASSAYS MADE BY ME UPON THE HEREIN DESCRIBED SAMPLES . . . .

Rejects Retained one month.

Pulps Retained one month unless specific arrangements made in advance.

*[Signature]*

Licensed Assayer of British Columbia



To: MEDESTO EXPLORATIONS.

File No. 8488

Date July 22, 1974

Samples Geo-chems



Certificate of ASSAY OF LORING LABORATORIES LTD.

-5-

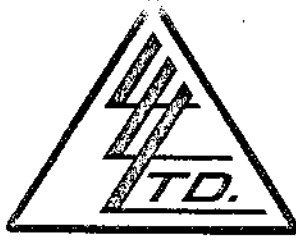
SAMPLE No.	PPM	PPM
	Pb	Zn
580S 275E	40	88
300	44	170
325	40	123
350	29	93
375	38	108
400	33	98
425	23	41
450	26	77
475	48	103
600S 0E	140	1325
100	26	100
125	23	95
150	55	108
175	33	86
200	51	126
500	26	60
600S 25W	34	230
50	210	277
75	360	120
100	225	343
125	200	241

I Hereby Certify THAT THE ABOVE RESULTS ARE THOSE ASSAYS MADE BY ME UPON THE HEREIN DESCRIBED SAMPLES . . . .

Rejects Retained one month. Pulp Retained one month unless specific arrangements made in advance.

Licensed Assayer of British Columbia

To: MEDESTO EXPLORATIONS.



File No. 8488

Date July 22, 1974

Samples Geo-chems

Certificate of ASSAY of LORING LABORATORIES LTD.

-6-

SAMPLE No.	PPM Pb	PPM Zn
600S 150W	190	290
175	220	259
200	87	259
225	26	64
250	21	75
275	29	66
300	26	81

I Herby Certify THAT THE ABOVE RESULTS ARE THOSE ASSAYS MADE BY ME UPON THE HEREIN DESCRIBED SAMPLES . . . .

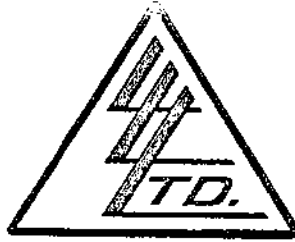
Rejects Retained one month.  
Pulps Retained one month  
unless specific arrangements  
made in advance.

*[Handwritten Signature]*

Licensed Assayer of British Columbia

To: MEDESTO EXPLORATIONS.  
 215A-10th St. N.W.,  
 CALGARY, Alta.

File No. 8457  
 Date July 23, 1974  
 Samples Geo-chems



ATTN: G. Evans

Certificate of  
**ASSAY** of  
**LORING LABORATORIES LTD.**

-1-

SAMPLE No.	PPM Pb	PPM Zn
600N 0W0E	29	116
600N 100E	25	81
250	21	98
300	26	90
625	36	116
650	180	350
875	70	77
900	40	41
925	33	46
1000	39	50
620N 450E	78	57
800N 000	23	66
025 E	20	62
050	57	66
075	26	66
100	17	190
125	31	100
150	48	322
200	310	1,150
225	225	1,250
275	20	88

**I** **Hereby Certify** THAT THE ABOVE RESULTS ARE THOSE  
 ASSAYS MADE BY ME UPON THE HEREIN DESCRIBED SAMPLES . . . .

Rejects Retained one month.  
 Pulp Retained one month  
 unless specific arrangements  
 made in advance.

*G. L. McFadden*

Licensed Assayer of British Columbia

To: MEDESTO EXPLORATIONS.

File No. 8457

Date July 23, 1974

Samples Geo-chems



Certificate of ASSAY OF LORING LABORATORIES LTD.

-2-

SAMPLE No.	PPM	PPM
	Pb	Zn
800N 300E	29	79
325	40	155
350	44	52
375	42	79
400	23	42
425	26	93
450	200	98
475	48	71
500	58	67
525	17	84
550	38	47
575	46	60
600	26	67
625	14	41
650	72	270
700	26	106
725	51	43
750	31	93
775	51	75
800	34	90
850	36	54

I Hereby Certify THAT THE ABOVE RESULTS ARE THOSE ASSAYS MADE BY ME UPON THE HEREIN DESCRIBED SAMPLES . . . .

Rejects Retained one month. Pulps Retained one month unless specific arrangements made in advance.

*Edmond J. ...*

Licensed Assayer of British Columbia

To: MEDESTO EXPLORATIONS.

File No. 8457

Date July 23, 1974

Samples Geo-chems



Certificate of  
ASSAY of  
LORING LABORATORIES LTD.

-3-

SAMPLE No.	PPM Pb	PPM Zn
800N 875E	36	130
900	58	34
950	39	90
975	34	62
1000	42	59
820N 175E	220	123
250	29	27
800N 025	17	52
075W	21	86
100	40	71
125	25	44
175	26	34
200	26	71
225	17	55
250	25	79
275	18	46
300	17	42
325	25	44
350	25	41
375	26	66
400	25	31

I Hereby Certify THAT THE ABOVE RESULTS ARE THOSE  
ASSAYS MADE BY ME UPON THE HEREIN DESCRIBED SAMPLES . . . .

Rejects Retained one month.

Pulps Retained one month  
unless specific arrangements  
made in advance.

*e. l. m. j. a. a.*

Licensed Assayer of British Columbia

To: MEDESTO EXPLORATIONS.

File No. 8457

Date July 23, 1974

Samples Geo-chems



Certificate of  
ASSAY of  
LORING LABORATORIES LTD.

-4-

SAMPLE No.	PPM	PPM
	Pb	Zn
800N 425W	21	52
450	25	88
475	28	64
500	29	67
525	33	62
550	29	71
575	26	47
600	29	77
625	31	98
650	26	90
675	23	88
700	26	86
725	25	71
750	39	75
800	100	81
825	125	69
850	25	93
875	21	86
925	28	90
950	190	195
1000	195	200

I Hereby Certify THAT THE ABOVE RESULTS ARE THOSE  
ASSAYS MADE BY ME UPON THE HEREIN DESCRIBED SAMPLES . . . .

Rejects Retained one month.  
Pulps Retained one month  
unless specific arrangements  
made in advance.

*A. L. McFarlane*  
Licensed Assayer of British Columbia

To: MEDESTO EXPLORATIONS.

File No. 8457

Date July 23, 1974

Samples Geo-chems



Certificate of  
ASSAY of  
LORING LABORATORIES LTD.

-5-

SAMPLE No.	PPM Pb	PPM Zn
1000N OE	38	81
25	33	185
50	165	200
75	1,960 = 0.20%	2,240 = 0.22%
125	25	88
150	34	86
175	44	120
200	98	116
225	39	54
250	65	111
275	33	46
300	57	98
325	62	42
350	34	93
375	25	95
400	33	73
425	15	46
450	23	88
475	20	71
500	20	73
525	42	77

I Hereby Certify THAT THE ABOVE RESULTS ARE THOSE  
ASSAYS MADE BY ME UPON THE HEREIN DESCRIBED SAMPLES . . . .

Rejects Retained one month.  
Pulps Retained one month  
unless specific arrangements  
made in advance.

*a L m J a d e*  
Licensed Assayer of British Columbia

To: MEDESTO EXPLORATIONS.

File No. 8457

Date July 23, 1974

Samples Geo-chems



Certificate of  
ASSAY of  
LORING LABORATORIES LTD.

-6-

SAMPLE No.	PPM Pb	PPM Zn
1000N 550E	25	38
575	53	39
600	62	52
625	26	106
650	33	62
675	31	86
700	21	36
725	28	84
750	25	93
775	65	126
800	31	67
825	21	106
850	23	86
875	33	66
900	33	50
925	44	93
975	34	123
1000	89	108
1000N OW	38	90
25	28	77
50	26	77

I Hereby Certify THAT THE ABOVE RESULTS ARE THOSE  
ASSAYS MADE BY ME UPON THE HEREIN DESCRIBED SAMPLES . . . .

Rejects Retained one month.

Pulps Retained one month  
unless specific arrangements  
made in advance.

*[Signature]*  
Licensed Assayer of British Columbia



To: MEDESTO EXPLORATION.

File No. 8457

Date July 23, 1974

Samples Geo-chems



Certificate of  
ASSAY of  
LORING LABORATORIES LTD.

-7-

SAMPLE No.	PPM Pb	PPM Zn
1000N 75W	25	64
100	33	75
125	26	67
150	40	93
175	28	84
200	29	55
225	36	67
250	23	77
275	12	44
300	38	39
325	29	54
350	23	36
375	42	47
400	17	31
425	15	75
450	21	71
475	26	88
500	29	67
525	40	71
550	42	111
575	39	93

I Hereby Certify THAT THE ABOVE RESULTS ARE THOSE  
ASSAYS MADE BY ME UPON THE HEREIN DESCRIBED SAMPLES . . . .

Rejects Retained one month.

Pulps Retained one month  
unless specific arrangements  
made in advance.

*admjuc*

Licensed Assayer of British Columbia

To: MEDESTO EXPLORATIONS.

File No. 8457

Date July 23, 1974

Samples Geo-chems



Certificate of  
ASSAY of  
LORING LABORATORIES LTD.

-8-

SAMPLE No.	PPM Pb	PPM Zn
1000N600W 625	45 36	32 47

I Hereby Certify THAT THE ABOVE RESULTS ARE THOSE  
ASSAYS MADE BY ME UPON THE HEREIN DESCRIBED SAMPLES . . . .

Rejects Retained one month.

Pulps Retained one month  
unless specific arrangements  
made in advance.

Licensed Assayer of British Columbia

To: MEDESTO EXPLORATIONS,  
 215A-10th St. N.W.,  
 CALGARY, Alta.  
 ATTN: G. Evans

File No. 8619  
 Date August 12, 1974  
 Samples Geo-chems



**Certificate of  
 ASSAY OF  
 LORING LABORATORIES LTD.**

-1-

SAMPLE No.	PPM	PPM
	Pb	Zn
400N25E	51	90
50	79	120
75	81	195
100	68	42
125	31	75
150	40	73
175	50	62
200	53	130
225	44	230
250	100	335
275	44	126
300	58	81
325	74	200
350	23	88
375	45	185
400	44	108
425	42	126
450	63	123
475	44	106
500	60	100
525	38	116
550	58	79
575	70	62
600	38	106
625	48	33
650	46	93
675	31	90
700	25	86
725	26	64
750	36	64
775	29	71
800	58	79

**I Hereby Certify** THAT THE ABOVE RESULTS ARE THOSE  
 ASSAYS MADE BY ME UPON THE HEREIN DESCRIBED SAMPLES . . . .

Rejects Retained one month.  
 Pulps Retained one month  
 unless specific arrangements  
 made in advance.

*E. L. M. Case*  
 Licensed Assayer of British Columbia

To: MEDESTO. EXPLORATIONS,

File No. 8619

Date August 12, 1974

Samples Geo-chems



Certificate of ASSAY OF LORING LABORATORIES LTD.

-2-

SAMPLE No.	PPM	PPM
	Pb	Zn
400N825E	78	230
850	425	108
875	94	283
900	38	218
925	33	247
950	44	283
975	39	55
1000	28	66
300N100W	44	200
125	130	200
150	130	108
175	810	126
200	2225 = 0.22 %	1205
225	78	456
250	29	71
275	23	49
300	26	126
325	48	235
350	33	93
375	63	126
400	125	259
600S325W	39	81
350	33	73
375	21	69
400	23	71
425	165	218
450	31	67
475	23	81
500	25	86
525	23	73
550	190	100
575	39	126

I Hereby Certify THAT THE ABOVE RESULTS ARE THOSE ASSAYS MADE BY ME UPON THE HEREIN DESCRIBED SAMPLES . . . .

Rejects Retained one month.

Puips Retained one month unless specific arrangements made in advance.

*Edm J. A. C.*

Licensed Assayer of British Columbia

To: MEDESTO EXPLORATIONS,

File No. 8619

Date August 12, 1974

Samples Geo-chems



Certificate of  
ASSAY of  
LORING LABORATORIES LTD.

-3-

SAMPLE No.		PPM	PPM
		Pb	Zn
600S600W		62	218
650		57	195
661		55	283
700		140	875
725		290	1235
750		1740	2125 = 0.21%
775		445	1035
800		850	1415
800W125S		58	265
150	N.B.	155	130
175	Samples marked	155	130
200	800W are line	55	113
225	800S; sample	165	111
250	125S is located	1360	335
275	at 25W, etc.	60	93
300	(i.e.:	34	79
325	800W125S = 800S 25W	29	77
350	800W 150S = 800S 50W	28	47
375		39	84
400		40	75
425		39	77
450		36	93
475		34	88
500		34	98
525		33	103
550		31	93
575		44	126
600		51	116
625		36	77
650		26	73
675		31	106
700		25	81

**I Hereby Certify** THAT THE ABOVE RESULTS ARE THOSE  
ASSAYS MADE BY ME UPON THE HEREIN DESCRIBED SAMPLES . . . .

Rejects Retained one month.  
Pulps Retained one month  
unless specific arrangements  
made in advance.

*admsaad*

Licensed Assayer of British Columbia

To: MEDESTO EXPLORATIONS.

File No. 8619

Date August 12, 1974

Samples Geo-chems



Certificate of  
ASSAY of  
LORING LABORATORIES LTD.

-4-

SAMPLE No.	PPM Pb	PPM Zn
800W825S	23	46
850	21	106
875	41	286
900	65	247
925	12	33
950	62	1175
975	23	270
1000	27	276

I Hereby Certify THAT THE ABOVE RESULTS ARE THOSE  
ASSAYS MADE BY ME UPON THE HEREIN DESCRIBED SAMPLES . . . .

Rejects Retained one month.  
Pulps Retained one month  
unless specific arrangements  
made in advance.

*a. l. m. j. a. c.*  
Licensed Assayer of British Columbia

To: MEDESTO EXPLORATIONS,  
 215A-10th Street N.W.,  
 CALGARY, Alta.

File No. 8664  
 Date August 23, 1974  
 Samples Geo-chems



ATTN: G. Evans

**Certificate of  
 ASSAY of  
 LORING LABORATORIES LTD.**

-1-

SAMPLE No.	PPM	PPM
	Pb	Zn
100N 150W	46	126
175	62	303
225	2625 = 0.26 %	2425 = 0.24 %
250	890	1750
275	4450 = 0.44 %	4000 = 0.4 %
300	42	195
325	44	120
350	48	230
375	39	247
425	34	120
130N 200W	380	1515
400	42	195
S780E550	29	103
S800EOWO	125	270
E25	45	140
50	42	175
75	38	103
100	39	145
125	33	100
150	28	112
175	34	165
200	33	112
225	28	130
250	26	140
275	28	125
300	25	93
325	25	100
350	23	97
375	34	103
400	33	112
425	29	103
450	34	103

**I Hereby Certify** THAT THE ABOVE RESULTS ARE THOSE  
 ASSAYS MADE BY ME UPON THE HEREIN DESCRIBED SAMPLES . . . .

Rejects Retained one month.  
 Pulps Retained one month  
 unless specific arrangements  
 made in advance.

*G. Evans*  
 Licensed Assayer of British Columbia

To: MEDESTO EXPLORATIONS,

File No. 8664

Date August 23, 1974

Samples Geo.-chems



Certificate of  
ASSAY OF  
LORING LABORATORIES LTD.

-2-

SAMPLE No.	PPM	PPM
	Pb	Zn
S800E450	34	103
475	28	77
500	29	97
525	29	97
575	26	75
600	25	55
625	48	71
700	25	36
725	36	47
750	31	66
775	23	62
800	29	60
S1000E200	28	106
225	25	108
250	25	95
275	23	95
300	21	77
325	20	93
350	29	81
375	25	95
400	23	106
425	23	90
450	26	100
475	28	77
500	39	93
525	36	90
550	25	90
575	18	106
S1200E200	20	98
225	29	106
250	23	100
275	26	98

I Hereby Certify THAT THE ABOVE RESULTS ARE THOSE  
ASSAYS MADE BY ME UPON THE HEREIN DESCRIBED SAMPLES . . . .

Rejects Retained one month.

Pulps Retained one month  
unless specific arrangements  
made in advance.

  
Licensed Assayer of British Columbia



To: MEDESTO EXPLORATIONS,  
 \_\_\_\_\_  
 \_\_\_\_\_  
 \_\_\_\_\_  
 \_\_\_\_\_



File No. 8664  
 Date August 23, 1974  
 Samples Geo-chems

Certificate of  
 ASSAY of  
 LORING LABORATORIES LTD.

-3-

SAMPLE No.	PPM Pb	PPM Zn
S1200E300	25	84
325	21	95
350	26	93
375	26	50
400	20	66
425	23	71
450	14	90
475	21	106
500	26	57
525	15	88
550	25	103
575	23	88
600	17	79
300S 75W	26	113
100	38	84
125	72	111
150	325	605
175	370	303
200	240	386
225	23	95
300S575W	62	98
600	33	277
625	39	343
650	220	548
675	155	975
700	425	1780
725	240	650
750	74	265
775	51	113
600S 550W	20	111

**I Hereby Certify** THAT THE ABOVE RESULTS ARE THOSE  
 ASSAYS MADE BY ME UPON THE HEREIN DESCRIBED SAMPLES . . . .

Rejects Retained one month.  
 Pulps Retained one month  
 unless specific arrangements  
 made in advance.

*Edmond J. ...*  
 Licensed Assayer of British Columbia

To: MEDESTO EXPLORATIONS, .....  
 215A-10th Street N.W., .....  
 Calgary, Alta. ....  
 ATTN: Mr. C. Evans .....

File No. 8796 .....  
 Date September 17, 1974 .....  
 Samples Geochems .....



Certificate of  
 ASSAY of  
 LORING LABORATORIES LTD.

SAMPLE No.	PPM Pb	PPM Zn
S400-W975	65	295
S400-W1000	255	700
S400-W1025	72	180
S400-W1050	62	150
S400-W1075	33	117
S400-W1100	21	103
S800-W525	17	93
S800-W600	45	130
S800-W625	50	150
S800-W650	140	378
S800-W675	48	350
S800-W700	62	1015
S800-W725	50	825
S800-W750	360	1515
S800-W775	4450 = 0.44 %	3640 = 0.36 %
S800-W800	1100	2086 = 0.21 %
S800-W825	165	1575
S800-W850	530	1545

NB:  
 Resampled -  
 earlier samples  
 in A<sub>1</sub> Zone.

**I Hereby Certify** THAT THE ABOVE RESULTS ARE THOSE  
 ASSAYS MADE BY ME UPON THE HEREIN DESCRIBED SAMPLES . . . .

Rejects Retained one month.  
 Pulps Retained one month  
 unless specific arrangements  
 made in advance.

*A. L. McFadden*  
 Licensed Assayer of British Columbia

To: MEDESTO EXPLORATIONS,  
 215A-10th St. N.W.,  
 CALGARY, Alta.  
 ATTN: G. Evans



File No. 8467  
 Date July 22, 1974  
 Samples Water

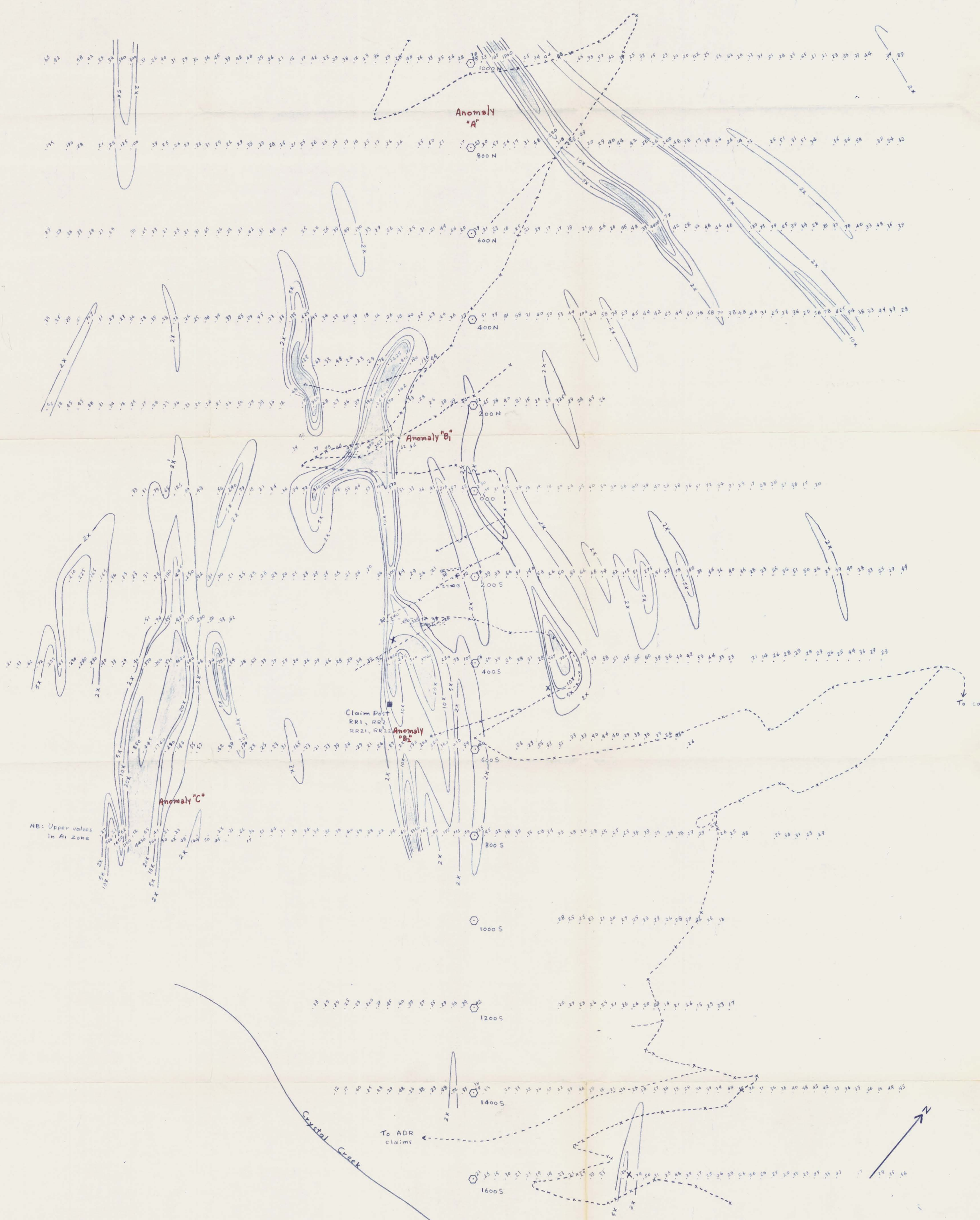
**Certificate of  
 ASSAY OF  
 LORING LABORATORIES LTD.**

SAMPLE No.	PPB Pb	PPB Zn
<u>Water Samples</u>		
SPRING	240	60
#2 Road 1/2 Mi.	190	50
#3 Bomb	190	30
Sample #41	240	40
Greek Show	240	80
1500S Road	340	90
<p><b>I Hereby Certify</b> THAT THE ABOVE RESULTS ARE THOSE          ASSAYS MADE BY ME UPON THE HEREIN DESCRIBED SAMPLES . . . .</p>		

Rejects Retained one month.  
 Pulps Retained one month  
 unless specific arrangements  
 made in advance.

*Alm J. S. Mac*  
 Licensed Assayer of British Columbia





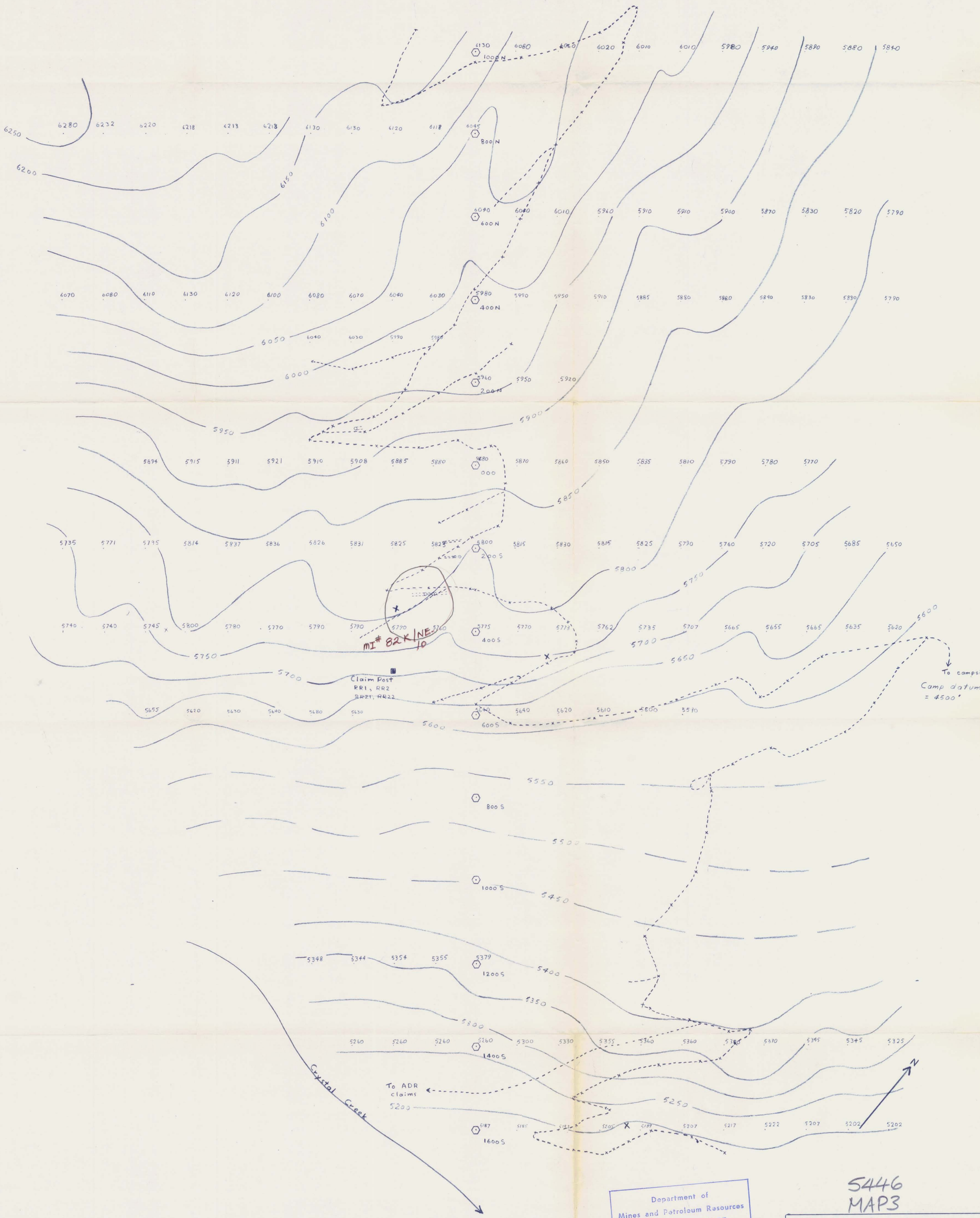
NB: Upper values in A1 Zone

Department of  
Mines and Petroleum Resources  
ASSESSMENT REPORT  
NO. 5446 MAP 1

5446  
MAP 1  
**Medesto Exploration  
RJR Claims**  
Pb (ppm) in "B-C" Zone  
2x > 70  
5x > 175  
10x > 350  
20x > 700  
EEP 1" = 100'

X - Mineral Showing  
--- Old D.D.H (Loc. approx.)





Department of  
Mines and Petroleum Resources  
ASSESSMENT REPORT  
NO. 5446 MAP 3

5446  
MAP 3  
Medesto Exploration  
RJR Claims  
Topography  
(by barometer)  
1" = 100' Sept/74

X - Mineral Showing  
--- Old D.D.H. (Loc. approx.)





Department of  
Mines and Petroleum Resources  
ASSESSMENT REPORT  
NO. 5446 MAP 4

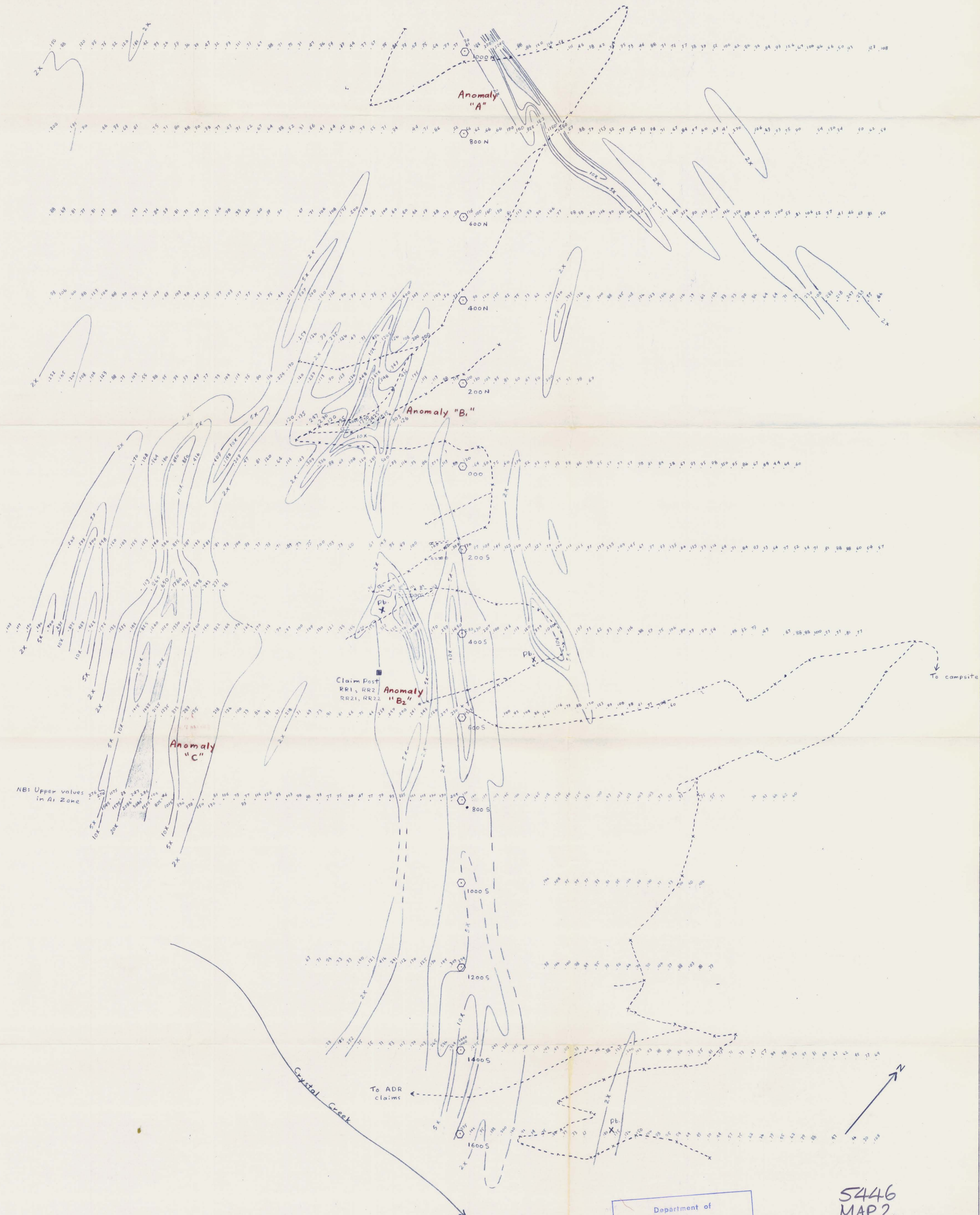
5446  
MAP 4

- Qt. - Quartzite
- Arg. - Argillite
- Ls. - Limestone
- Qtz. Vein
- Shear zone
- Cleavage Attitude
- Bedding Attitude
- X - Mineral Showing
- o-o-o - Old D.D.H (Loc. approx.)

**Medesto Exploration**  
**RJR Claims**  
Surface Geology

EEP 1" = 100' Sept. 1974





NB: Upper values in A1 Zone

Department of  
Mines and Petroleum Resources  
ASSESSMENT REPORT  
NO. 5446 MAP 2

5446  
MAP 2  
**Medesto Exploration**  
**RJR Claims**  
Zn (ppm) in "B-C" Zone  
2X > 160  
5X > 400  
10X > 800  
20X > 1600  
1" = 100'  
EEP Oct./74