

NU GROUP

GEOCHEMICAL REPORT

BY

D.C. MALCOLM, B.A.Sc., P. Eng., 2568  
Consulting Geologist

Vancouver, B.C.

May 23, 1975

Department of  
Mines and Geology Resources  
ASSIGNMENT REPORT  
NO. 5464 X19

C O N T E N T S

	Page
SUMMARY. . . . .	2
CLAIMS . . . . .	2
LOCATION AND ACCESS. . . . .	2
GEOLOGY. . . . .	3
GEOCHEMICAL SURVEY . . . . .	3
CONCLUSION . . . . .	4
MAPS IN POCKET	

MAPS

- #1 LOCATION MAP
- #2 DESCRIPTION MAP
- #3 GEOCHEMICAL SURVEY

NU GROUP

OWNER: BRONSON MINES LIMITED (M.P.L.)

Claims: NU Numbers 14 to 17 and 29 to 34

Location: Princeton

Latitude: 49° N.

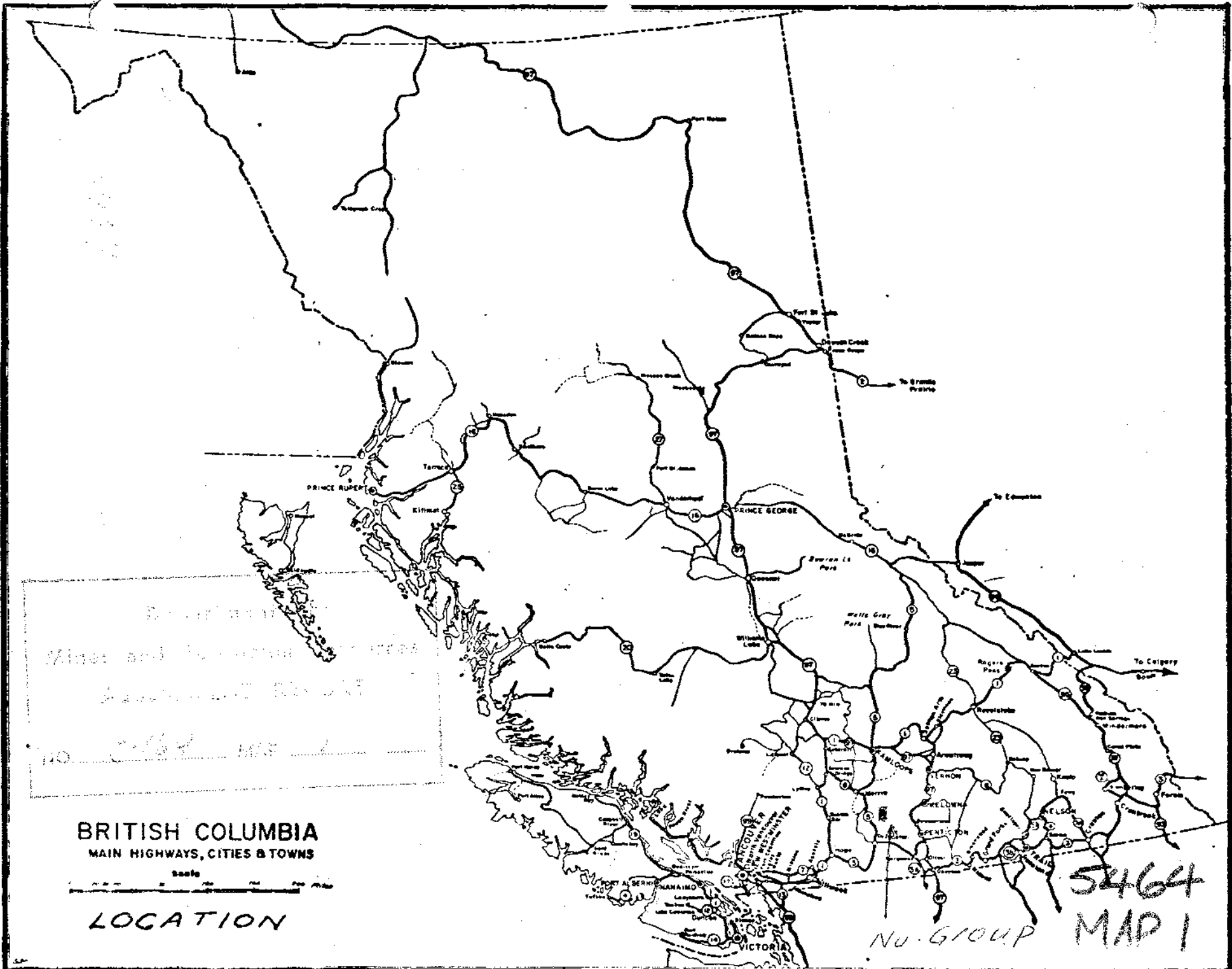
Longitude: 120° N.W.

Similkameen Mining Division

Author: D.C. MALCOLM, B.A.Sc., P. Eng., 2568

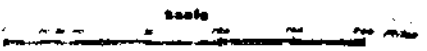
Dates of Work: July 8 to 17, 1974

May 20 to 23, 1975



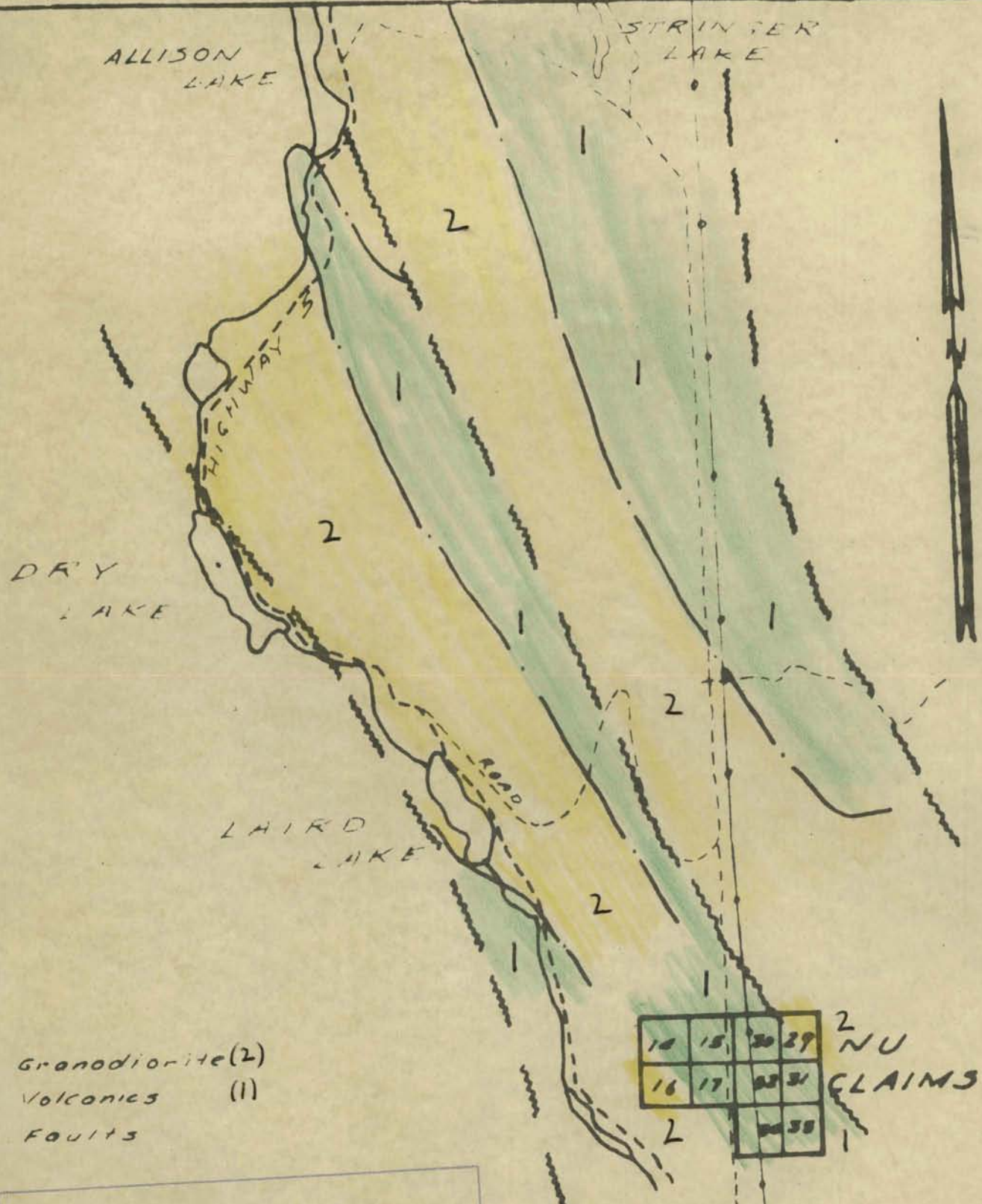
British Columbia  
 Mines and Geology  
 Department  
 No. 5464

**BRITISH COLUMBIA**  
 MAIN HIGHWAYS, CITIES & TOWNS



LOCATION

5464  
 MAP 1  
 NU-GROUP



- Granodiorite (2)
- Volcanics (1)
- Faults

Department of  
Mines and Petroleum Resources  
ASSESSMENT REPORT

NO. 5464 MAP 2 **BRONSON MINES LTD.**

**5464  
MAP 2  
LTD.**

Scale 1" = 50000"

Date 25.5.75

## SUMMARY

The NU claims are along the ridge between Allison and Summers Creeks 11 miles north of Princeton, British Columbia. Geochemical samples were taken every 100 feet from the B soil layer on east to west lines spaced at 400 foot intervals from a north to south base line.

The results in parts per million copper were obtained by assaying by atomic absorption after hot acid digestion.

The results were low.

## CLAIMS

Ten located claims: NU 14 to 17, inclusive; Record Numbers 35,307 to 35,310, inclusive. NU Numbers 29 to 34, inclusive; Record Numbers 35,315 to 35,320, inclusive, in the Similkameen Mining Division, British Columbia.

## LOCATION AND ACCESS

Latitude: <sup>36</sup>49°13' North  
Longitude: 120°34' West  
Elevation: 3,600 to 3,800 Feet

The claims are along the pipe line and power line on the ridge between Allison and Summers Creeks eleven miles north of Princeton.

Access is by the dirt Oliphant Mountain road which leaves the Princeton Merritt Highway No. 5 at the north end of Laird Lake.

The area is of low relief and covered with pine trees, a few spruce and areas of grass.

### GEOLOGY

The area about the claims is on a crushed belt of Nicola volcanics intruded by granodiorite. It lies between the Allison Creek fault to the west and the Summers Creek fault to the east. In the belt there are a series of pyrite and chalcopyrite fracture fillings in the crushed rocks. A large deposit, owned by ADONIS MINES LIMITED, has been explored a short distance to the east of the claim group.

On the NU claims dark massive andesites lie along the east contact of a granodiorite pluton. The rocks show epidote alteration and some pyrite occurs in fractures.

### GEOCHEMICAL SURVEY

A north to south base line was cut along the east side of the claims. About 10 miles of cross lines were run west from the base line at 400 foot intervals.

Five hundred samples were taken at a depth of 6" to 18" in the B soil layer at a 100 foot spacing along the cross lines.

The samples were placed in waterproof soil sample bags labelled to correspond to the line and station number and taken to Acme Analytical Laboratories Limited in Burnaby for assaying. They were assayed there by hot acid digestion and copper determination in parts per million by atomic absorption spectrometer.


The results were very low with only three samples assaying above 100 parts permillion copper. No anomalous copper areas were outlined.

#### CONCLUSION

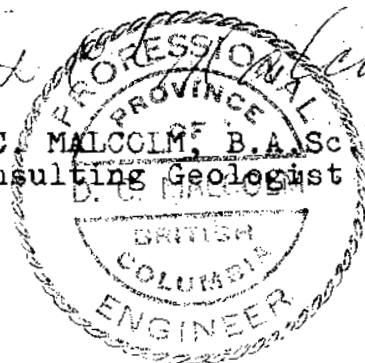
The NU group is underlain by pyritized Nicola volcanics with a low grade of metamorphism. The rocks occur along the east side of a granodiorite intrusion and are extensively faulted.

Geochemical samples were uniformly low in copper content.

Report by

  
D.C. MALCOLM, B.A.Sc., P. Eng.,  
Consulting Geologist

Vancouver, B.C.  
May 23, 1975





DOMINION OF CANADA:  
PROVINCE OF BRITISH COLUMBIA:  
To Wit:

# 5464

In the Matter of

I, Evan Sleeman  
1561 West 26th., Ave.,  
of Vancouver, B.C.

in the Province of British Columbia, do solemnly declare that the following is the true cost of work done on the Nu group of claims.

LABOUR

<u>Name</u>	<u>Dates Worked</u>	<u>Days</u>	<u>Cost</u>	<u>Total</u>
Evan Sleeman	July 8-17, 1974	10	\$50.00	\$500.00
Don Shwery	July 8-17, 1974	10	\$50.00	\$500.00
<u>CAMP COSTS</u>	Two men @ \$10.00 per day each	10	\$20.00	\$200.00
<u>TRAVEL</u>	700 miles using Ford 250 4WD @ 25¢ per mile.....			\$175.00
<u>Supplies</u>	Flagging tape, mosquito repel.. etc.....			\$ 40.00
<u>SAMPLE BAGS</u>	.....			\$ 25.00
<u>Engineering</u>	.....			\$325.00
<u>ASSAYING</u>	497 samples @ \$1.20 per sample.....			\$546.70
<u>TOTAL COST</u>				\$2,311.70

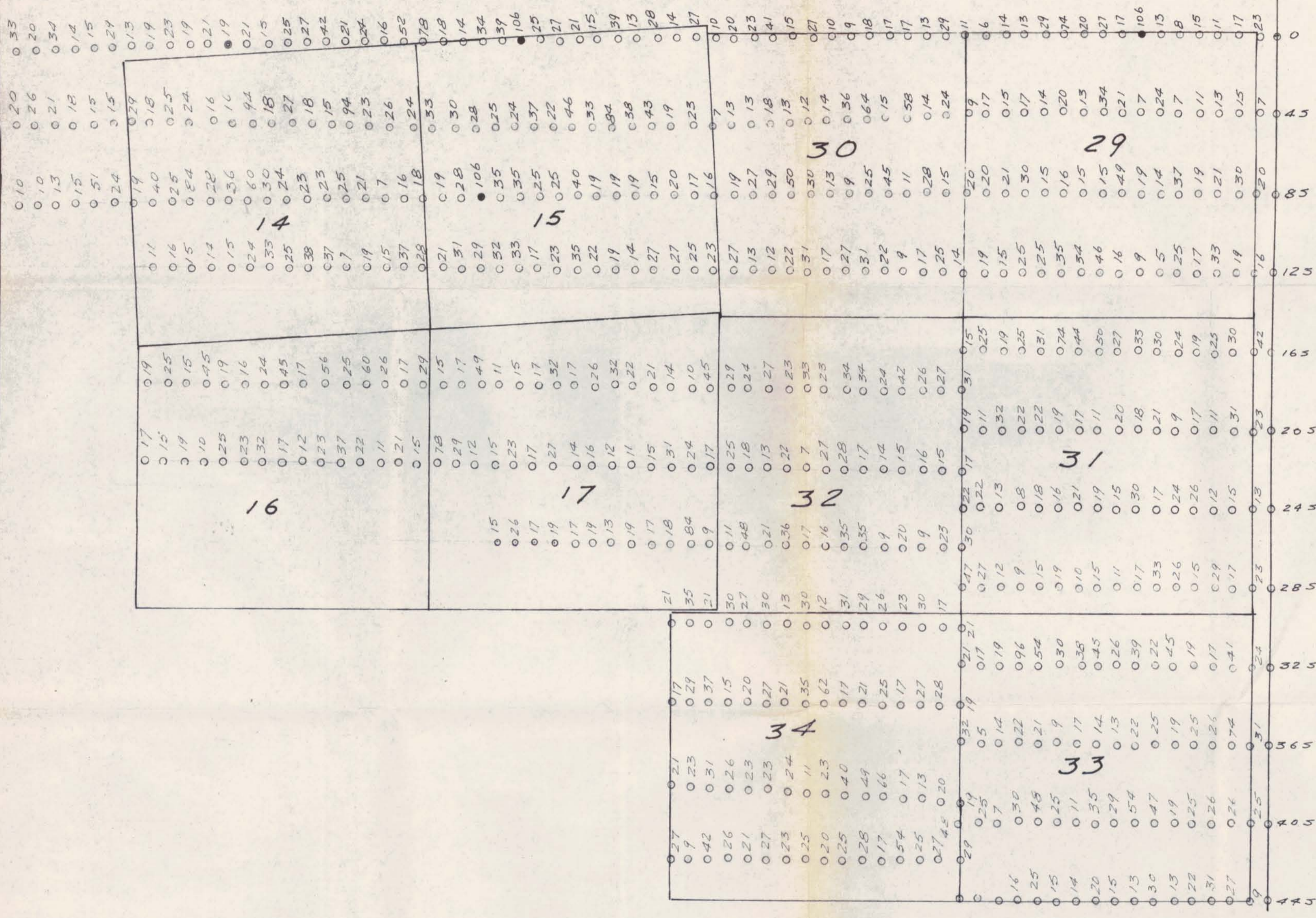
And I make this solemn declaration conscientiously believing it to be true, and knowing that it is of the same force and effect as if made under oath and by virtue of the "Canada Evidence Act."

Declared before me at the City  
of Vancouver, in the  
Province of British Columbia, this 23  
day of May 1975, A.D.

Evan Sleeman

Julie Turner  
A Commissioner for taking Affidavits for British Columbia or  
A Notary Public in and for the Province of British Columbia.  
SUB-MINING RECORDER





Department of  
Mines and Petroleum Resources  
ASSESSMENT REPORT  
NO. 5464 MAP 3

5464  
MAP 3

BRONSON MINES LTD  
NU CLAIMS

Copper - parts per million. GEOCHEMICAL SURVEY  
Scale 1" = 400' Date 23, 5, 75.