

5472

ASSESSMENT REPORT

DOER CLAIM GROUP

SARITA RIVER AREA, 92C/15W

ALBERNI MINING DIVISION, B. C.

92C/15W

for

GRAND WEST MINES LTD. (N.P.L.)

Vancouver, B. C.

by

James W. McLeod, B.Sc.

May 17, 1975

Department of Mines and Petroleum Resources ASSESSMENT REPORT NO. <u>5472</u> MAP.....

SUMMARY

Encouraging results were obtained from the mapping and sampling program conducted on the Doer Claim Group in April, 1975.

INTRODUCTION

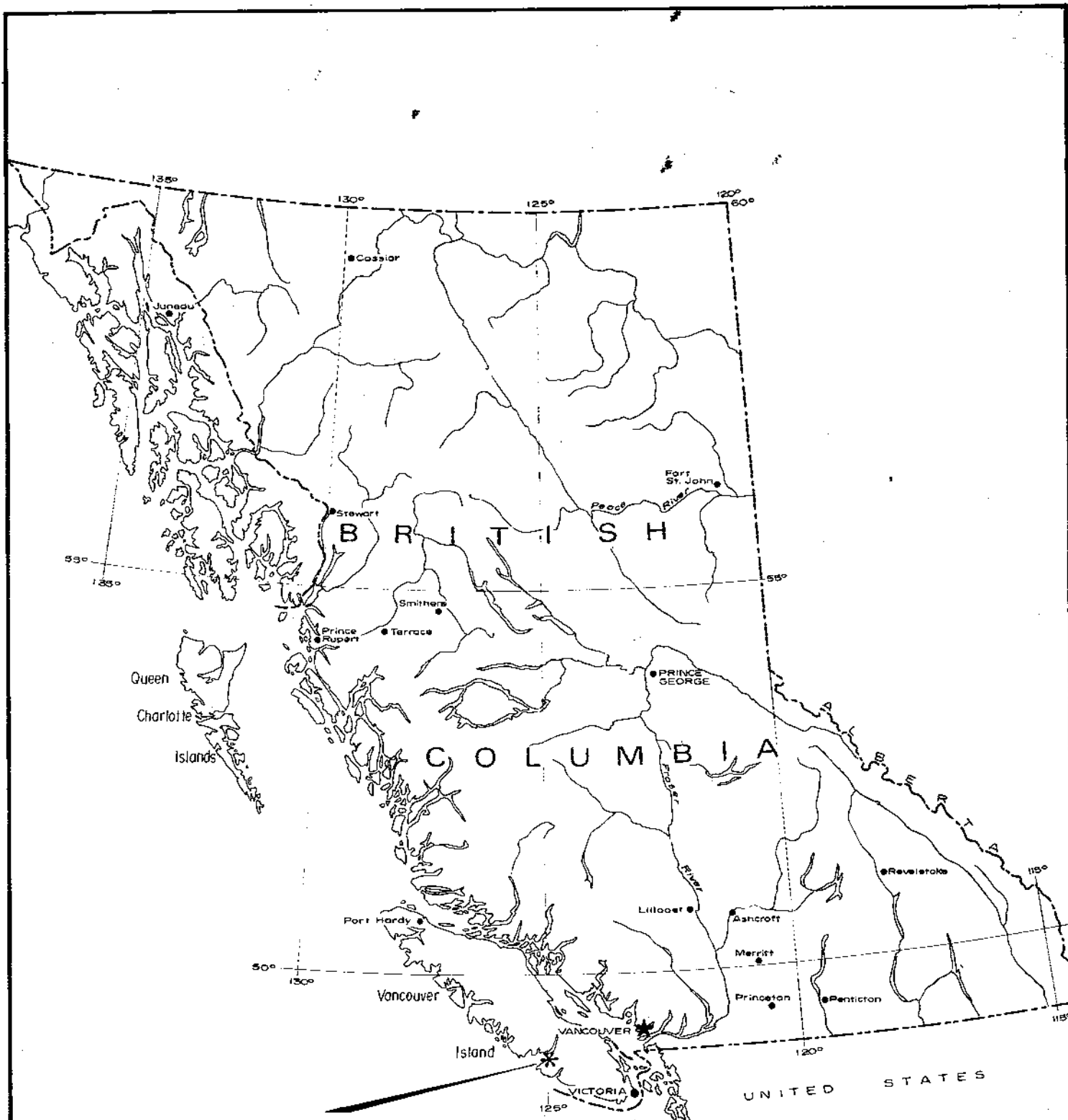
From April 12 - 16 inclusive, 1975, a mapping and rock sampling program was conducted on the Doer 3 - 6 inclusive mineral claims. The work program was carried out under the supervision of the writer, by Mr. Jacob Forster, Mr. Robert Schumacher, and Mr. Walter Kondra all of Vancouver, B. C.

PROPERTY AND OWNERSHIP

The Doer Claim Group is comprised of the Doer 3 - 6 inclusive mineral claims (see Figure 2). The claims are owned by Grand West Mines Ltd. (N.P.L.) of Vancouver, B. C. having been purchased from Mr. Charles Leighton, the claim staker, in 1974.

LOCATION AND ACCESS

The Doer Group is located one mile south of the mouth of the Sarita River on the west coast of Vancouver Island (see Figure 1).



PROPERTY

Department of
 Mines and Petroleum Resources
 ASSESSMENT REPORT
 NO. 5472 MAP 1

FIG. 1
 GRAND WEST MINES LTD. (N.P.L.)
 DOER CLAIMS
 INDEX MAP
 ALBERNI M.D.
 DECLINATION 25° EAST
 SCALE: 1" = 136 Miles
 APRIL 18, 1975

TABLE OF CONTENTS

	<u>Page No.</u>
SUMMARY	1
INTRODUCTION	1
PROPERTY AND OWNERSHIP	1
LOCATION AND ACCESS	1
TOPOGRAPHY	2
GEOLOGY, MINERALIZATION & ALTERATION	2
WORK PROGRAM	3
COST OF PROGRAM	3
ASSAY RESULTS	4
CERTIFICATE	

FIGURES

1. Index Map	in front
2. Geology and Sample Plan	in back
INDEX MAP	IN POCKET

Access to the property is gained by travelling 42 miles in a southwesterly direction from Port Alberni, B. C. to the mouth of the Sarita River on a good all weather logging road and hence one mile in a southerly direction on a good dirt road to the property.

TOPOGRAPHY

The Doer Group lies on the gentle northwesterly facing slope of Poett Heights at an elevation of 0' - 500' M.S.L.

GEOLOGY, MINERALIZATION AND ALTERATION

The Doer Group is underlain by basic to intermediate volcanics and massive limestones of the Triassic Karmutsen Formation which are intruded in places by quartz dioritic rocks of probable Jurassic age.

Mineralization observed by the writer, in order of decreasing abundance, included magnetite, pyrrhotite, pyrite, arsenopyrite, chalcopyrite, sphalerite, malachite, azurite and possibly tetrahedrite.

Alteration observed was typically propylitic in form, namely epidote-calcite-chlorite together with magnetite and in many instances the formation of a limey "skarn". The massive replacement occurrences of magnetite were probably originally massive limestone beds.

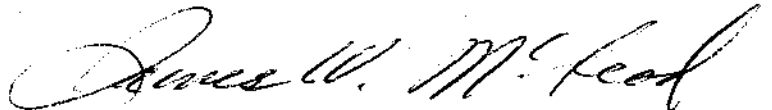
WORK PROGRAM

The work program carried out on the Doer Group consisted of geological outcrop mappings, rock sampling (both on the surface and underground), chaining and marking the showings and the adit, reclamation of the road on the property, cutting out approximately 800 feet of trail from the road to the adit (see Figure 2).

COST OF PROGRAM

Wages	\$1,200.00
3 men @ \$50/day for 5 days	
1 man @ \$75/day for 6 days	
Room and Board	160.00
Transportation	50.00
Equipment and Supplies	20.00
Preparation of Report and Maps	35.00
	<hr/>
	\$1,465.00
	<hr/> <hr/>

Respectfully submitted,


James W. McLeod,
Geologist



VANGEOCHEM LAB LTD.
 1521 PEMBERTON AVE.,
 NORTH VANCOUVER, B.C.,
 CANADA V7P 2S3

TELEPHONE: 988-2172
 AREA CODE: 604

Certificate of Geochemical Analyses

• Specialising in Trace Elements Analyses •

-IN ACCOUNT WITH-

Grand West Mines Ltd.
 c/o Mr. Jim McLeod
 4086 - West 17 th Ave.
 Attention: Vancouver, B C

Report No: 75 01 005 Page 1 of 1
 Samples Arrived: May 21, 1975
 Report Completed: May 24, 1975
 For Project: _____
 Analyst: E. Tang
 In #3271 Job #75024

Sample Marking	Co ppm	Cu ppm	Pb ppm	Zn ppm	Ag ppm	Au ppb
8276	-	-	-	-	3.2	10
8277	-	-	-	-	1.2	10
8278	-	-	-	-	3.0	10
8279	-	-	-	-	3.6	nd
8280	-	-	-	-	3.8	20
8281	-	-	-	-	4.0	10
8282	-	2250	22	140	3.8	100
8283	350	2350	10	35	1.6	50
8284	235	3000	10	70	2.2	40
8285	-	75	35	30	3.2	20
8286	-	13500	20	550	18.0	430
8287	-	2270	22	125	3.2	90

MASTER PRINTING LTD.

REMARKS:

ppb = parts per billion

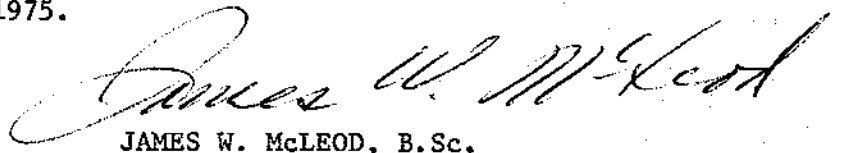
Signed:

% Mo x 1.6683 = % MoS₂ 1 Troy oz./ton = 34.28 ppm 1 ppm = 0.0001% nd = none detected ppm = parts per million
 All values are believed to be correct to the best knowledge of the analyst based on the method and instruments used.

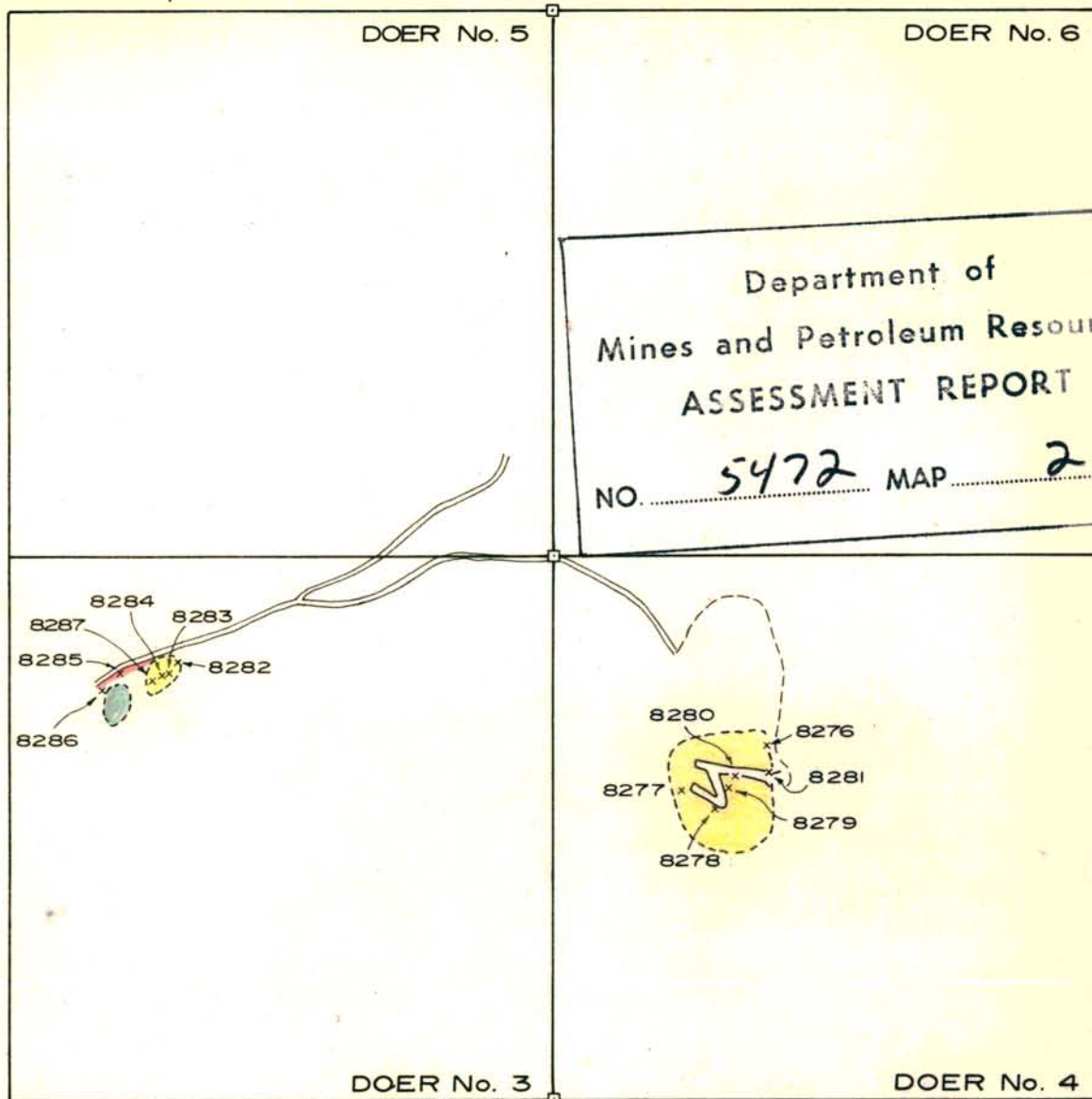
C E R T I F I C A T E

I, James W. McLeod, of the City of Vancouver,
Province of British Columbia, hereby certify as follows:

1. I am a geologist and member of the Geological Association of Canada.
2. I reside at 4086 West 17th Avenue, Vancouver, B. C.
3. I graduated in 1969 from the University of British Columbia, B.Sc. (Major Geology).
4. I have practiced my profession since 1969.
5. I am President of Grand West Mines Ltd. (N.P.L.), and I own 312,500 escrowed shares of the Company.
6. The above report is based on fieldwork performed by myself in April, 1975.


JAMES W. McLEOD, B.Sc.

DATED at Vancouver, B. C.
this 17th day of May, 1975.



SAMPLE NO.	WIDTH
8276	5'
8277	6'
8278	6'
8279	5'
8280	7'
8281	4'
8282	15'
8283	15'
8284	15'
8285	6'
8286	10'
8287	15'



LEGEND

- Quartz Diorite
- Volcanics
- Limestone
- Sample Location and Number
- Road
- Cut Trail (Line cutting)
- Adit
- Claim Post

GRAND WEST MINES LTD. (N.P.L.)
DOER CLAIMS
GEOLOGY AND SAMPLE PLAN

ALBERNI M.D.
DECLINATION 25° EAST

SCALE

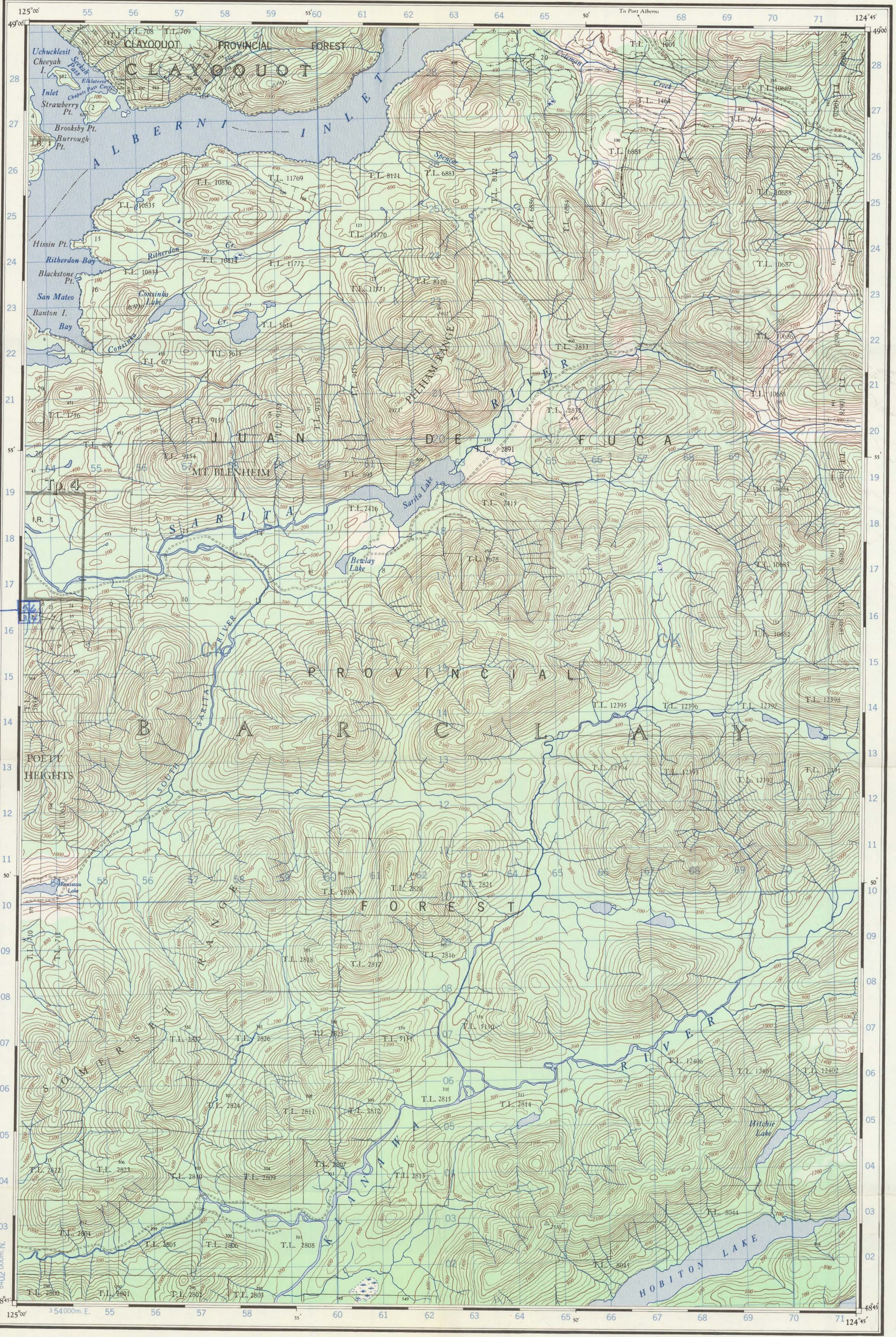
FEET 500 0 500 FEET



**5472
MAP 2**

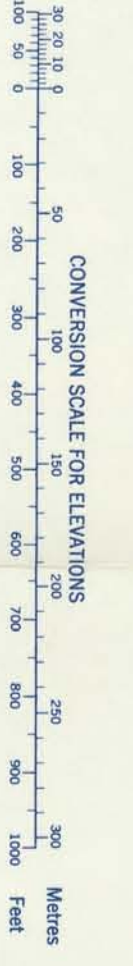
APRIL 18, 1975

92C/15 W



DOER
3-6.1761.

Refer to 92 C/15 West Half
Edition 2 MCE
Series A 721



Use figures only to obtain numerical values.
APPROXIMATE MEAN DECLINATION 1955
FOR CENTRE OF SHEET
Annual magnetic change 25 westerly

GRID ZONE DESIGNATION	10U	100,000 M. SQUARE IDENTIFICATION	CK
-----------------------	-----	----------------------------------	----

TO GIVE GRID REFERENCE ON THIS SHEET
FIGURES, IGNORE THE SMALLER FIGURES PRINTED AROUND THE MARGIN
OF THE MAP. THESE ARE FOR FINDING THE FULL CO-ORDINATES.
USE ONLY THE LARGER FIGURES PRINTED IN THE MARGIN OR
ON THE FACE OF THE MAP. V.S. 354

POINT	HORIZONTAL CONTROL POINT
FOR STANDARD MILITARY GRID REFERENCE	
East	North
64	02
6	9
646	029
STANDARD MILITARY GRID REFERENCE	646029
Nearest similar grid reference: 100,000 Metres (Approximately 63 Miles)	

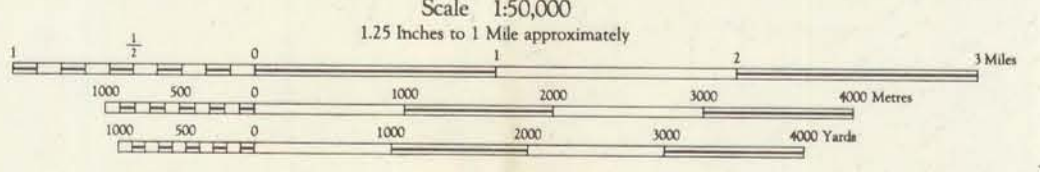
ONE THOUSAND METRE
UNIVERSAL TRANSVERSE MERCATOR GRID
ZONE 10

Surveyed and compiled by the Survey and Mapping Service,
Department of Lands and Forests, British Columbia 1933
Drawn and printed by the Army Survey Establishment, R.C.E.
Department of National Defence 1943
Consented from the 1943 map to 1:50,000 by the A.S.E. 1949
Partially revised and printed by the A.S.E. 1955

NITINAT

BRITISH COLUMBIA

MAGNETIC DECLINATION 33° 44' EAST
AT CENTRE OF MAP, 1955
Annual magnetic change 25 westerly



Note: Land lots shown thus: [Symbol]

ROADS		BOUNDARY, INTERNATIONAL	
hard surface, all weather	more than 2 lanes	Province	—
hard surface, all weather	2 lanes	County or District	—
loose surface, all weather	less than 2 lanes	Township or Parish	—
loose surface, all weather	2 lanes	City or Town	—
loose surface, all weather	less than 2 lanes	Reservation, Indian, Military, etc.	—
Private Road, Trail	Private Road, Trail	Power Transmission Line	—
Railways:		Telephone or Telegraph, main route	—
normal gauge, multiple track	Station	Horizontal Control Point	—
normal gauge, single track	Stop	Boundary Marker	—
abandoned, or under construction	Abandoned	Bench Mark	—
narrow gauge, single track	Abandoned	Spot Elevation, (in feet)	—
Bridge, viaduct or overpass	—	Mine or Pit	—
Tunnel	—		

Contour Interval 100 Feet
All Elevations in Feet above Mean Sea Level
Universal Transverse Mercator Projection
North American Datum 1927
Copies may be obtained from
The Map Distribution Office,
Dept. of Mines and Technical Surveys,
Ottawa.

REFERENCE		REFERENCE	
House, Building	—	Lighthouse	—
School	—	Wharf or Pier	—
Church	—	Foreshore Flats	—
Post Office	—	Swamp or Marsh	—
Tower, Radio Mast, Lookout, etc.	—	Lake or Pond, intermittent	—
Cemetery	—	Glacier or Snowfield	—
Quarry	—	Stream, intermittent	—
Cliff or Gravel Pit	—	Irrigation Canals, Ditches	—
Cutting	—	Inundated Land, seasonal	—
Embankment	—	Contours, elevation	—
Saw Mill	—	Contours, depression	—
		Forest, wooded, Scrub	—

INDEX TO ADJOINING SHEETS

EFFINGHAM	ALBERNI INLET	NANAIMO LAKES
BARILEY SOUND	NITINAT	COWICHAN LAKE
PACHINA POINT	CARRANAH	SAN JUAN

GRAND WEST MINES
DOER CLAIMS
INDEX MAP
REPORT #5472
AUG. 28/15

Department of
Mines and Petroleum Resources
ASSESSMENT REPORT
NO. 5472 MAP 3
NITINAT

92 C/15 WEST HALF 5472
MAP 3