

5516

92F/15E

DIAMOND DRILL REPORT ON HOLE #3
CORTEZ GROUP OF MINERAL CLAIMS,
TEXADA ISLAND.
LATITUDE 49 DEGREES 47 MINUTES NORTH
LONGITUDE 124 DEGREES 36 MINUTES WEST
NANIAMO M.D. (N.T.S. MAP NO. 92F/15E)

Dr. K. Warren Geiger, P.Eng., P.Geol.

July 10, 1975

Department of
Mines and Petroleum Resources
ASSESSMENT REPORT
NO. 5516 MAP

BREAKDOWN OF COSTS - DIAMOND DRILL
HOLE NO. 3 - CORTEZ GROUP, TEXADA
ISLAND, JUNE 4 TO 10, 1975

LABOUR COSTS:

Field Superintendent and Chief Driller, J. A. Stewart 7 days @ \$80.00/day	\$560.00	
Driller, Leo Ouellette 52 hrs @ \$7.36/hr.	382.72	
Drill Helper, David Lyons 58 hrs. @ \$7.36/hr.	426.88	
Bushmen, Clearing and moving drill equipment to new drill sites		
David Murphy - 16 hrs. @ \$5.60/hr.	89.60	
George Beyko - 16 hrs. @ \$5.60/hr.	89.60	
	<hr/>	\$1,548.80

FOOD AND ACCOMODATION

Ground transportation 7 days @ \$50.00 per day 3/4 GMC Truck and 1 ton IHC		350.00
25 man days @ \$15.00/day		375.00

CONTRACT - DRILL ACCESS AND DRILL SITE
CLEARING

D7F Cat - 21 hours @ \$41.00 per hour Numan's Enterprises Ltd., Powell River		861.00
---------------------------------------------------------------------------------	--	--------

CONTRACT - WATER HAUL

Lease tanker truck @ \$25.00/day, 7 days Numan's Enterprises Ltd., Powell River		175.00
------------------------------------------------------------------------------------	--	--------

DRILL EQUIPMENT COSTS - 7 days/\$50.00 per day		350.00
------------------------------------------------	--	--------

MATERIALS AND SUPPLIES		463.51
------------------------	--	--------

TOTAL		<hr/> <hr/> \$4,123.31
-------	--	------------------------


ZWB

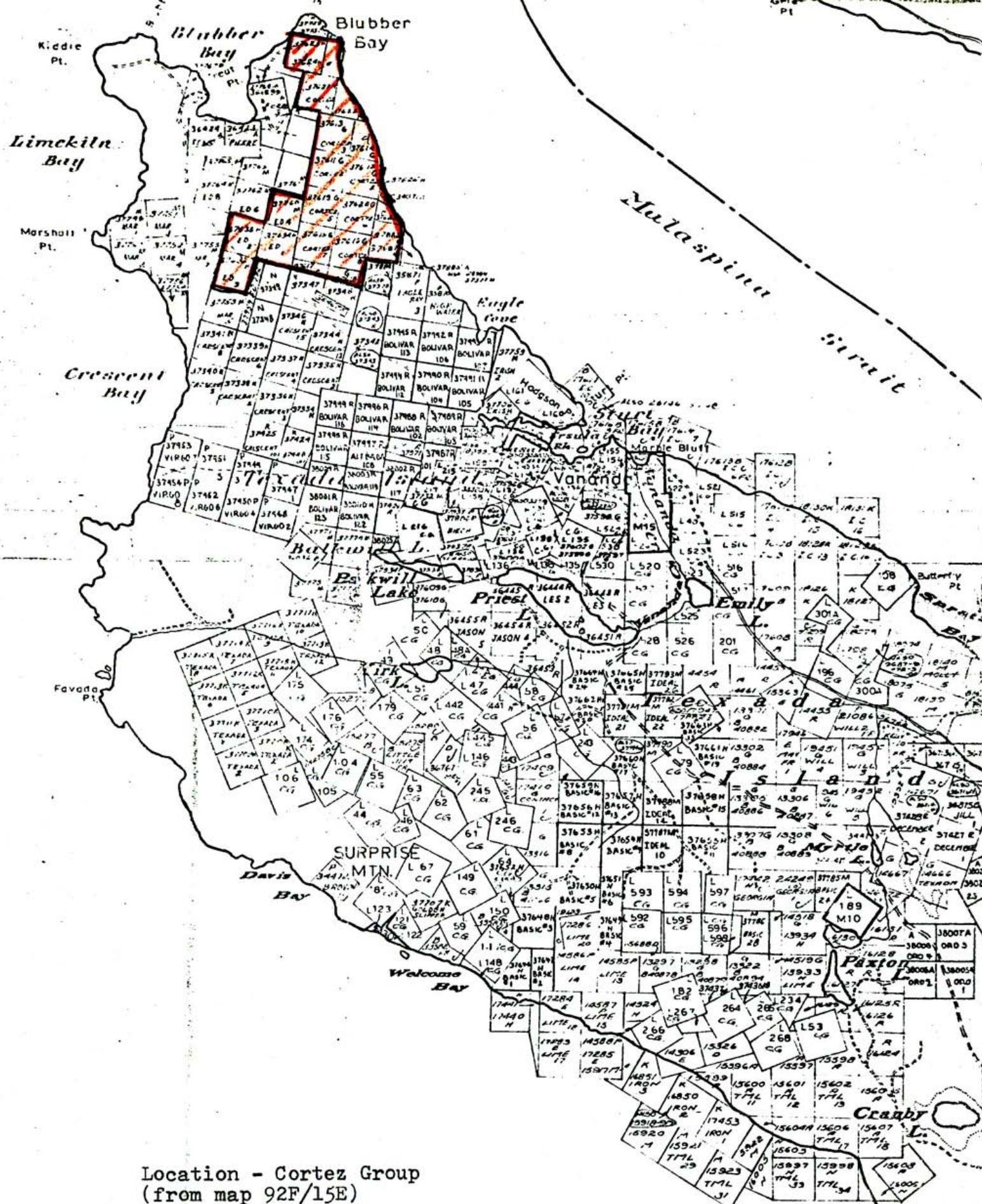
STATEMENT OF QUALIFICATIONS

1. I, K. Warren Geiger, am a consulting geologist with head office at: 12225 - 105 Avenue, Edmonton, Alberta, and reside at Box 368, Rocky Mountain House, Alberta.
2. I have a B.Sc., in Mining Engineering from the University of Alberta at Edmonton and M.S. and Ph.D., degrees in Geology from Cornell University, Ithaca, New York.
3. I am a Professional Geologist registered with the Association of Professional Engineers, Geologists and Geophysicists of Alberta.
4. I am a Professional Engineer registered by non-resident license with the Association of Professional Engineers of the Province of British Columbia.
5. I possess nineteen years of experience in the fields of mineral exploration, mining and groundwater geology.

Within the scope of this submission, all information and conclusions are believed to be accurate.

July 10, 1975.


K. Warren Geiger, Ph.D., P.Eng., P.Geol.
Consulting Geologist,
12225 - 105 Avenue,
Edmonton, Alberta.



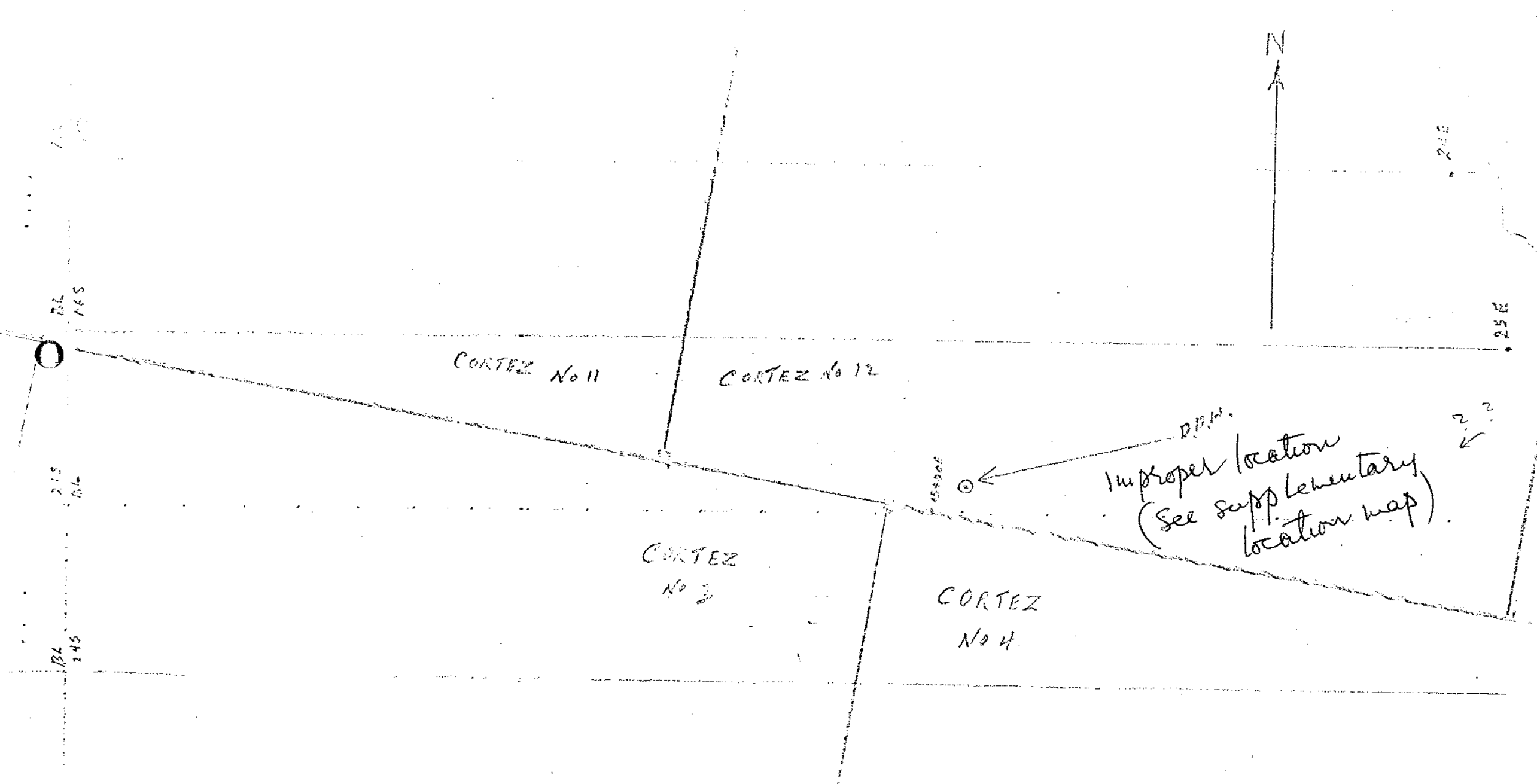
Location - Cortez Group
(from map 92F/15E)

5516
MAP 1 *R.D.H.*

CLAIM NO. Cortez # 12**DIAMOND DRILL RECORD**PROPERTY CortezPage 2
HOLE NO. 3Base Line 21 + 10S - 15 + 50ELATITUDE ELEVATION BEARING 250T^o DEPTH STARTED COMPLETEDDEPARTURE SECTION DIP -70^o DRILLED BY Leo Cuellette LOGGED BY K. W. Geiger

DEPTH FEET	FORMATION	SAMPLE NO.	FROM	TO	WIDTH	ASSAYS			
<u>129.2' - 168.7'</u>	<u>Limestone - White - very broken, much core missing. Probably caves. No metallics.</u>								
<u>168.7' - 187.1'</u>	<u>Limestone - White - Consolidated, no apparent core missing. Essentially no metallics.</u>								
<u>187.1' - 202.75'</u>	<u>Limestone - Light greenish gray - Increasing alteration to green chlorite particularly along irregular fractures accompanied by increasing amount of fine metallics disseminated throughout but more concentrated along the same fractures. Appears to be pyrite, chalcopyrite and possibly magnetite.</u>								
	<u>Note: Size of core - AQ (Wireline)</u>								
	<u>Core stored at camp of Longbar Minerals Ltd., on Texada Island.</u>								

K. W. Geiger



Location: Diamond Drill Hole
Cortez Group
Texada Island

Scale: 1" = 200'

5516 MAP 2

CLAIM NO. Cortez #12

DIAMOND DRILL RECORD

PROPERTY.....

HOLE NO. 3

Base Line 21+10S - 15+50 E

LATITUDE.....

ELEVATION.....

BEARING.....

250°T

DEPTH.....

STARTED.....

COMPLETED.....

DEPARTURE.....

SECTION.....

DIP.....

-70°

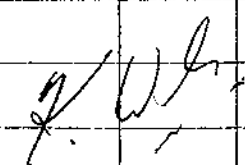
DRILLED BY.....

Leo Ouellette

LOGGED BY.....

K. W. Geiger

DEPTH FEET	FORMATION	SAMPLE NO.	FROM	TO	WIDTH	ASSAYS			
0 -2.2'	Overburden								
2.2'-8.0'	Limestone - White to very light pink. Some dark bands - Mineralized with fine metallics throughout including pyrite, chalcopyrite and possible magnetite often present along fine bands.								
8.0'-13.7'	Dike - Mineralized throughout. Andesite apparently altered through introduction of calcite. Some quartz present towards western side.								
13.7'-51.4'	Limestone - White with irregular fine dark bands. Disseminated metallics throughout often clustering along bands, include pyrite chalcopyrite and magnetite.								
51.4'-55.5'	Dike - Andesite - unmineralized								
55.5'-59.5'	Limestone - White with irregular fine dark bands. Disseminated metallics throughout as above.								
59.5'-113.8'	Limestone - White, bleached, chalk-like in places - Very little metallics.								
113.8' - 128.0'	Limestone - White with irregular fine dark bands. Disseminated metallics as above.								
128.0' - 129.2'	Dike - Altered, mineralized, green.								



Scale 1" = 1,000'
Contour Interval
= 25'



Blubber Bay

MAP SHOWING LOCATION OF DIAMOND
DRILL HOLE #3 ON THE CRESCENT
GROUP OF MINERAL CLAIMS

Location
of D.D.H. #3
Cortez Group

CORTEZ
GROUP

5516
MAP 3

CRESCENT GROUP

BOLIVAR GROUP

