

McWILLIAM, WHYTE, GOBLE & ASSOCIATES

British Columbia Land Surveyors
KAMLOOPS — PRINCE GEORGE — SMITHERS

SUBDIVISIONS
PURCHASES AND LEASES
MINERAL CLAIMS
RIGHT-OF-WAY
HYDROGRAPHIC
TOPOGRAPHIC
CONSTRUCTION

A. W. McWILLIAM, B.C.L.S.
D. G. WHYTE, B.C.L.S.
R. J. GOBLE, B.C.L.S.
R. C. DOMINIK, B.C.L.S.
A. DANILUCK, B.C.L.S.
V. BARTELL, B.C.L.S.
P. G. PENNER, B.C.L.S.

3817 - 2nd Ave.
Telephone 847-3395
P.O. Box 2650
SMITHERS, B.C.
VOJ 2N0

July 21st., 1975
File: 1448

Re: Regulations Governing Assessment Work under the Mineral Act. OIC. No 2542
B.C. Reg. 205/73

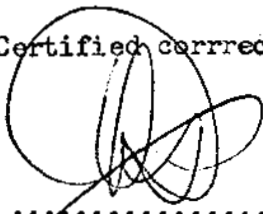
This is to certify that this survey firm completed surface and underground control surveys for Coca Metals Ltd., on their Mount Cronin Project during the period June 10th to July 5th 1975, under the supervision of R.J. Goble, B.C.L.S.

The Results of these surveys are shown on Drawings 1448 -1, 1448-2, 1448-3, and 1448-4. The Geographic location of these drawings are shown on key Map no. 1448-5.

The underground survey was conducted by transit and tape, surface measurements by transit and Geodimeter A76 distancer. Elevations were established by closed trigonometric leveling. Bearings are astronomic derived from Solar Observations.

The co-ordinate grid established is related to existing claims by ties to legal corners of existing surveyed mineral claims as shown on Drawing 1448-4 .

Certified correct, July 21st., 1975


.....
R.J. Goble, B.C.L.S.

Department of
Mines and Petroleum Resources
ASSESSMENT REPORT

NO. 5526 MAP

McWILLIAM, WHYTE, GOBLE & ASSOCIATES

British Columbia Land Surveyors

KAMLOOPS — PRINCE GEORGE — SMITHERS

SUBDIVISIONS
PURCHASES AND LEASES
MINERAL CLAIMS
RIGHT-OF-WAY
HYDROGRAPHIC
TOPOGRAPHIC
CONSTRUCTION

A. W. McWILLIAM, B.C.L.S.
D. G. WHYTE, B.C.L.S.
R. J. GOBLE, B.C.L.S.
R. C. DOMINIK, B.C.L.S.
A. DANILUCK, B.C.L.S.
V. BARTELL, B.C.L.S.
P. G. PENNER, B.C.L.S.

3817 - 2nd Ave.
Telephone 847-3385
P.O. Box 2650
SMITHERS, B.C.
VOJ 2NO

July 4th 1975.
File: 1448
Inv. 75.6.27

Coca Metals Ltd.,
Box 2918,
Smithers, B.C.

Statement:

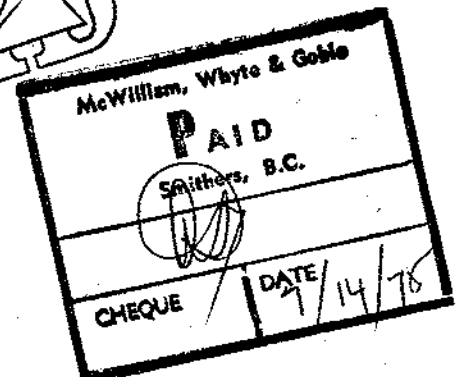
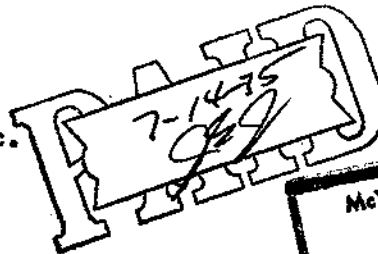
to: Control Survey Control Project. Establish horizontal and vertical control, levels 1, 3 and 5, and connecting surface control to Mineral claims. Preparation of plans.

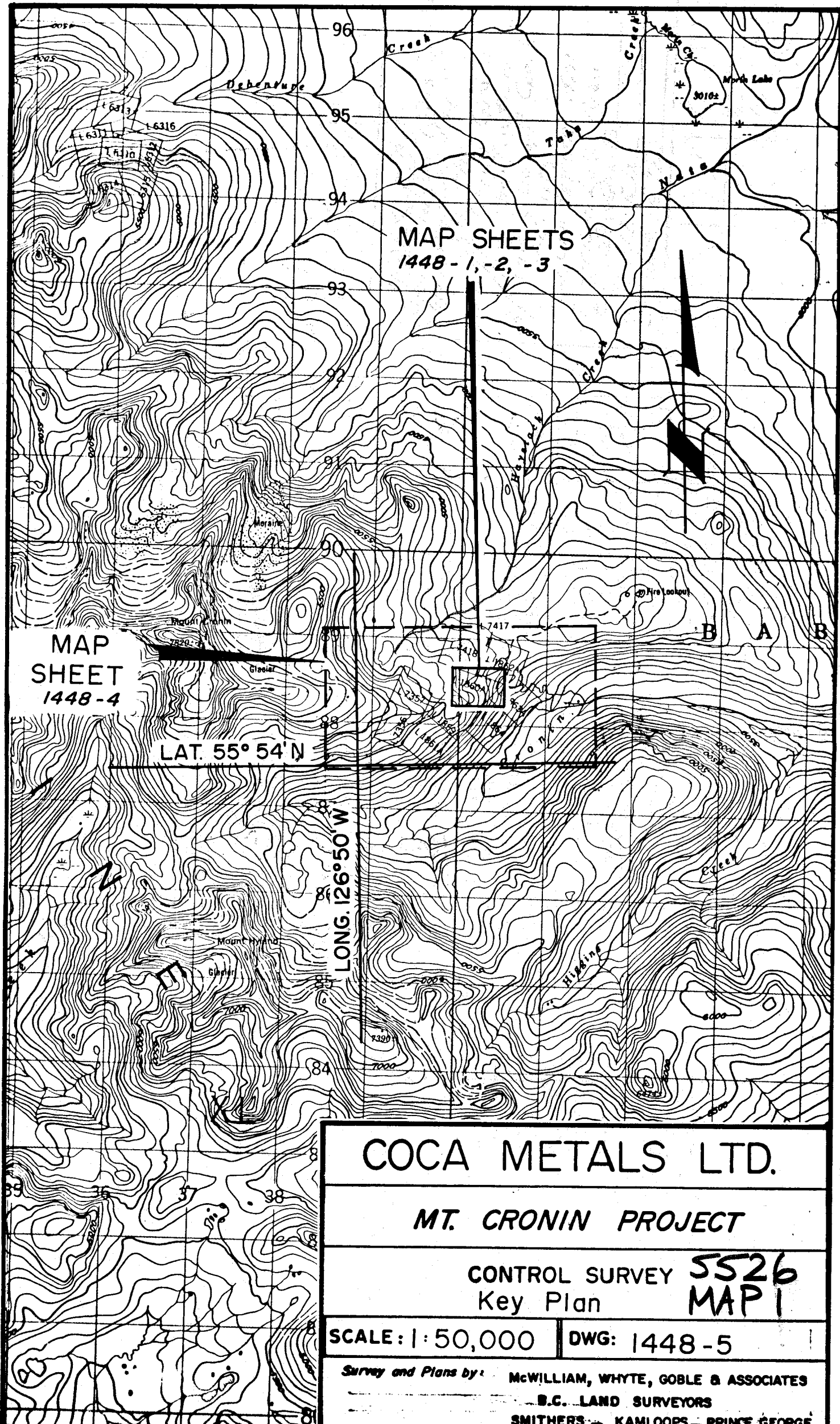
Supervision and Calculations...	12½ days @ \$ 235.00	\$ 2820.00
Instrument man..	15½ days @ \$ 136.00	2108.00
Assistants...	21 days @ \$ 112.00	2352.00
Transportation.. 4x4..	15 days @ \$ 25.00	375.00
	Pickup 15 days @ \$ 5.00	75.00
	275 miles @ .23	63.25
A76 Geodimeter distancer	9 days @ \$ 35.00	315.00
Field expenses.....		<u>317.71</u>
Total		<u>\$ 8425.96</u>

McWilliam, Whyte, Goble and Assoc.

per
R.J. Goble.

RJG:g





MAP SHEETS
1448-1, -2, -3

MAP SHEET
1448-4

LAT. 55° 54' N

LONG. 126° 50' W

COCA METALS LTD.

MT. CRONIN PROJECT

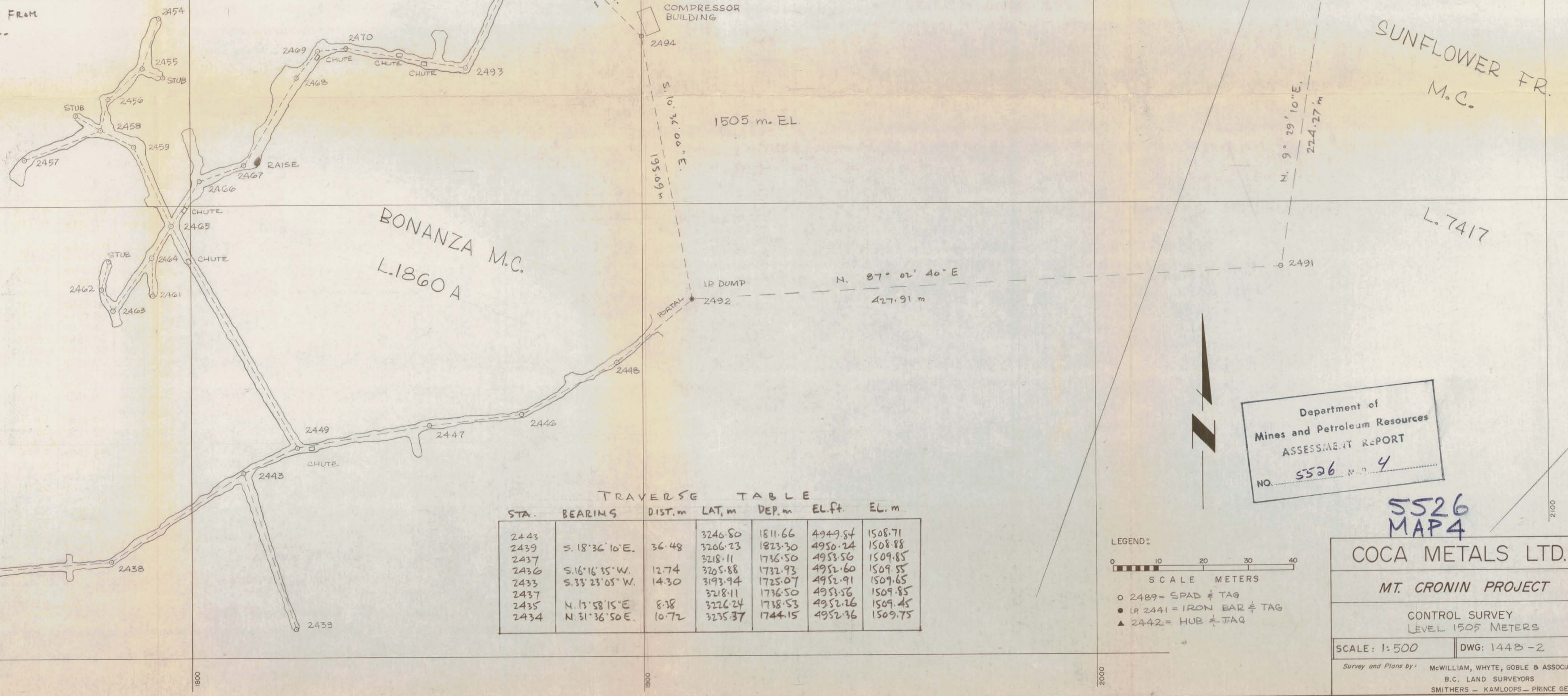
CONTROL SURVEY 5526
Key Plan MAP 1

SCALE: 1:50,000 | DWG: 1448-5

Survey and Plans by: McWILLIAM, WHYTE, GOBLE & ASSOCIATES
B.C. LAND SURVEYORS
SMITHERS - KAMLOOPS - PRINCE GEORGE

STA.	BEARING	DIST. m	LAT. m	DEP. m	EL. ft.	EL. m.
2495			3361.48	1876.55	4939.42	1505.54
2493	S. 25° 46' 15" W.	34.63	3330.30	1861.50	4949.11	1508.49
2470	N. 80° 29' 30" W.	26.94	3334.75	1834.93	4948.36	1508.26
2469	S. 87° 21' 20" W.	6.54	3334.45	1828.40	4950.82	1509.01
2468	S. 38° 22' 50" W.	7.65	3328.45	1823.66	4950.64	1508.96
2467	S. 31° 12' 00" W.	22.51	3309.20	1812.00	4950.55	1508.93
2466	S. 68° 51' 20" W.	10.42	3305.45	1802.28	4951.50	1509.22
2465	S. 33° 45' 20" W.	11.66	3295.75	1795.80	4951.26	1509.14
2449	S. 29° 19' 10" E.	56.72	3246.29	1823.58	4948.25	1508.23
2447	N. 80° 17' 10" E.	29.90	3251.34	1853.05	4947.31	1507.94
2446	N. 84° 23' 20" E.	20.60	3253.35	1873.55	4946.43	1507.67
2448	N. 62° 01' 00" E.	23.91	3264.57	1894.66	4946.23	1507.61
2492	N. 49° 15' 45" E.	21.86	3278.84	1911.23	4938.88	1505.37
2494	N. 10° 36' 00" W.	59.46	3337.26	1900.30	4942.84	1506.58
2495	N. 44° 26' 20" W.	33.92	3361.48	1876.55	4939.42	1505.54
2465			3295.75	1795.80	4951.26	1509.14
2465			3313.16	1787.75	4951.13	1509.10
2459	N. 24° 48' 15" W.	19.18	3313.16	1787.75	4951.13	1509.10
2458	N. 67° 57' 15" W.	8.40	3316.98	1780.28	4950.83	1509.01
3400	STUB	N. 59° 21' 00" W.	6.40	3320.24	1774.77	
2456	N. 13° 58' 00" E.	6.96	3323.73	1781.95	4951.56	1509.24
2455	N. 47° 35' 00" E.	10.39	3330.74	1789.63	4952.01	1509.37
STUB	S. 63° 42' 40" E.	5.18	3328.44	1794.27		
2454	N. 19° 13' 10" E.	11.93	3342.00	1793.55	4951.76	1509.30
2458			3316.98	1780.28	4950.83	1509.01
STUB	N. 59° 21' 00" W.	6.40	3320.24	1774.77		
2457	S. 68° 54' 35" W.	18.05	3310.48	1763.44	4951.30	1509.16
2465			3295.75	1795.80	4951.26	1509.14
2464	S. 32° 08' 40" W.	8.14	3288.86	1791.47	4951.09	1509.09
2461	S. 0° 51' 35" E.	8.40	3280.46	1791.60	4950.55	1508.93
2463	S. 35° 56' 25" W.	14.67	3276.98	1782.06	4950.89	1509.03
2462	N. 28° 31' 30" W.	5.35	3281.68	1780.30	4951.33	1509.17
STUB	N. 14° 30' 30" E.	6.40	3287.88	1781.91		
2449			3246.29	1823.58	4948.25	1508.23
2443	S. 65° 15' 40" W.	13.12	3240.80	1811.66	4949.84	1508.71
2438	S. 56° 40' 10" W.	35.11	3221.51	1782.33	4949.82	1508.71
2437	S. 85° 45' 35" W.	45.95	3218.11	1736.50	4953.56	1509.85
2440			3432.58	1888.10	4869.72	1484.29
2441			3360.77	2041.16	4741.54	1445.22

BEARINGS ARE ASTRONOMIC, DERIVED FROM SOLAR OBSERVATIONS AT STA. 2492.



STA.	BEARINGS	DIST. m	LAT. m	DEP. m	EL. ft.	EL. m.
2443			3246.50	1811.66	4949.84	1508.71
2439	S. 18° 36' 10" E.	36.48	3206.23	1823.30	4950.24	1508.88
2437			3218.11	1736.50	4953.56	1509.85
2436	S. 16° 16' 35" W.	12.74	3205.88	1732.93	4952.60	1509.55
2433	S. 33° 23' 05" W.	14.30	3193.94	1725.07	4952.91	1509.65
2437			3218.11	1736.50	4953.56	1509.85
2435	N. 13° 58' 15" E.	8.38	3226.24	1738.53	4952.26	1509.45
2434	N. 31° 36' 50" E.	10.72	3235.37	1744.15	4952.36	1509.75

Department of Mines and Petroleum Resources
ASSESSMENT REPORT
NO. 5526 MAP 4

5526 MAP 4
COCA METALS LTD.
MT. CRONIN PROJECT
CONTROL SURVEY
LEVEL 1505 METERS
SCALE: 1:500 DWG: 144B-2
Survey and Plans by: McWILLIAM, WHYTE, GOBLE & ASSOCIATES
B.C. LAND SURVEYORS
SMITHERS - KAMLOOPS - PRINCE GEORGE

TRAVERSE TABLE

STA.	BEARING.	DIST. m.	LAT. m.	DEP. m.	EL. ft.	EL. m.
2500			3279.36	1803.43	5039.38	1536.00
2499	S. 71° 47' 40" E.	15.33	3265.13	1809.12	5046.81	1538.27
2496	S. 19° 58' 00" E.	38.49	3228.96	1822.27	5046.09	1538.05
END	S. 70° 16' 50" E.	13.72	3224.31	1835.17		
2499			3265.13	1809.12	5046.81	1538.27
2497	S. 47° 17' 05" W.	25.46	3247.86	1790.42	5047.70	1538.54
END	S. 72° 11' 00" W.	17.07	3242.64	1774.17		
2440			3432.58	1888.10	4869.72	1484.29

BEARINGS ARE ASTRONOMIC DERIVED FROM SOLAR OBSERVATIONS @ STA. 2492



Department of
Mines and Petroleum Resources
ASSESSMENT REPORT
NO. 5526 MAP 5

5526
MAPS

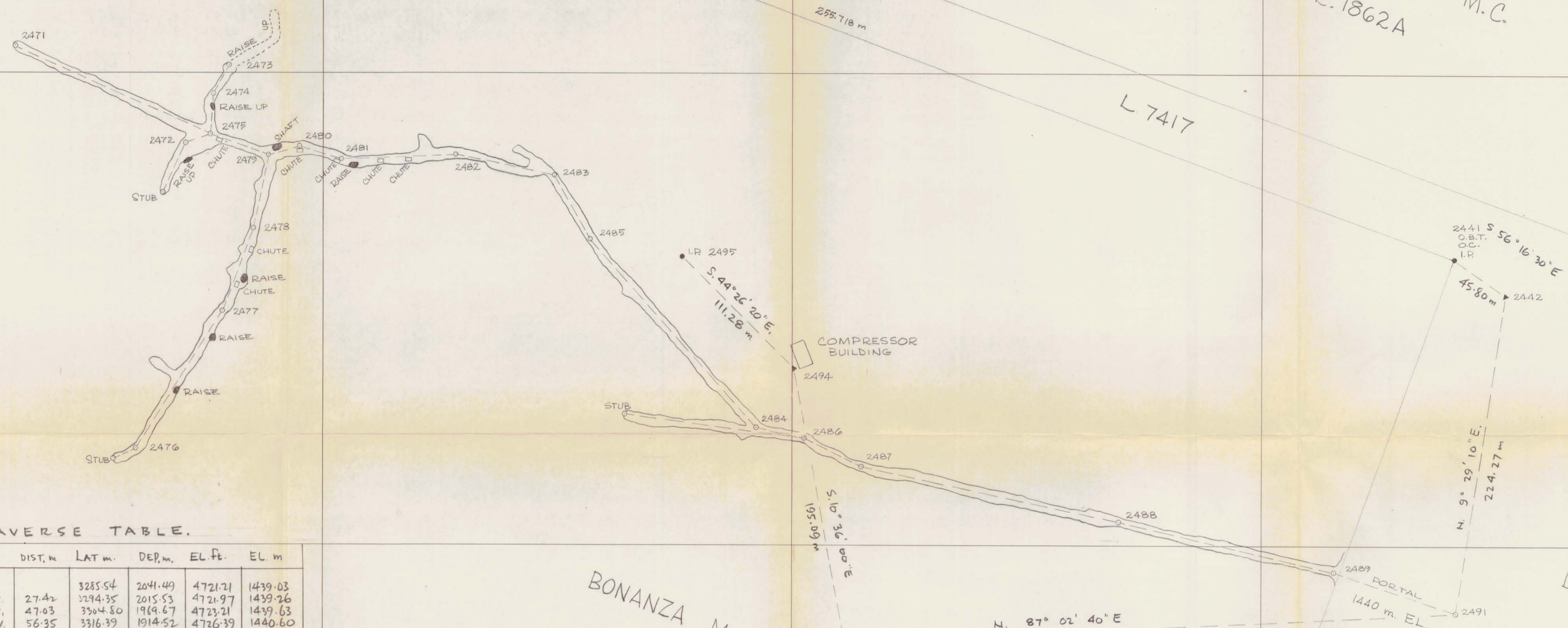
COCA METALS LTD.

MT. CRONIN PROJECT

CONTROL SURVEY
LEVEL 1536 METERS

SCALE: 1:500 DWG: 148-3

Survey and Plans by: McWILLIAM, WHYTE, GOBLE & ASSOCIATES
B.C. LAND SURVEYORS
SMITHERS - KAMLOOPS - PRINCE GEORGE



TRAVERSE TABLE.

STA	BEARING	DIST. m	LAT. m.	DEP. m.	EL. Ft.	EL. m
2491			3285.54	2041.49	4721.21	1439.03
2489	N. 71° 15' 15" W.	27.42	3294.35	2015.53	4721.97	1439.26
2488	N. 77° 16' 15" W.	47.03	3304.80	1969.67	4723.21	1439.63
2487	N. 78° 07' 25" W.	56.35	3316.39	1914.52	4726.39	1440.60
2486	N. 63° 22' 25" W.	13.59	3322.48	1902.38	4726.71	1440.70
STUB	N. 81° 53' 40" W.	38.41	3327.90	1864.35		
2484	N. 76° 27' 45" W.	10.27	3324.89	1892.39	4727.24	1440.86
2485	N. 41° 39' 55" W.	53.28	3364.69	1856.98	4729.44	1441.53
2483	N. 29° 55' 45" W.	15.85	3378.42	1849.07	4729.13	1441.44
2482	N. 77° 35' 35" W.	21.46	3383.03	1828.11	4730.19	1441.76
2481	S. 87° 14' 36" W.	24.34	3381.86	1803.80	4730.47	1441.85
2480	N. 72° 04' 20" W.	9.11	3384.67	1795.13	4730.82	1441.95
2479	S. 74° 54' 05" W.	6.90	3382.87	1788.47	4730.80	1441.95
2478	S. 11° 49' 16" W.	16.28	3366.93	1785.13	4732.03	1442.32
2477	S. 20° 26' 15" W.	18.72	3349.38	1785.59	4732.95	1442.60
2476	S. 32° 26' 40" W.	34.53	3320.24	1760.07	4733.20	1442.68
STUB	S. 64° 14' 10" W.	5.18	3317.99	1755.40		
2479						
2475	N. 71° 16' 00" W.	13.13	3387.11	1776.04	4732.57	1442.49
2471	N. 66° 13' 05" W.	45.46	3405.44	1734.44	4732.18	1442.37
2475						
2472	S. 70° 59' 16" W.	5.38	3385.35	1776.96	4731.45	1442.15
STUB	S. 75° 40' 00" W.	11.89	3374.64	1765.81		
2475						
2474	N. 3° 16' 00" E.	8.47	3395.57	1776.51	4731.75	1442.27
2473	N. 30° 35' 20" E.	6.91	3401.51	1760.02	4733.87	1442.88
2440			3432.58	1888.10	4869.72	1484.29
2441			3360.77	2041.16	4741.54	1445.22

BEARINGS ARE ASTRONOMIC, DERIVED FROM SOLAR OBSERVATIONS AT STA. 2492.

Department of
Mines and Petroleum Resources
ASSESSMENT REPORT
NO. 5526 MAP 3

5526 MAP 3

LEGEND:
0 10 20 30 40
SCALE METERS
○ 2489 = SPAD & TAG
● I.P. 2441 = IRON BAR & TAG
▲ 2442 = HUB & TAG

COCA METALS LTD.
MT. CRONIN PROJECT
CONTROL SURVEY
LEVEL 1440 METERS
SCALE: 1:500 DWG: 1448-1
Survey and Plans by: McWILLIAM, WHYTE, GOBLE & ASSOCIATES
B.C. LAND SURVEYORS
SMITHERS - KAMLOOPS - PRINCE GEORGE



Department of
Mines and Petroleum Resources
ASSESSMENT REPORT
NO. 5526 MAP 2

5526 MAP2

COCA METALS LTD.
MT. CRONIN PROJECT
CONTROL SURVEY

SCALE: 1:2000 DWG: 1448-4
DRAWN BY: WILLIAM WHITE, BOBIE B ASSOCIATES
I.C. LANG, PRINCIPAL
SMITHERS - KAMLOOPS - PRINCE GEORGE