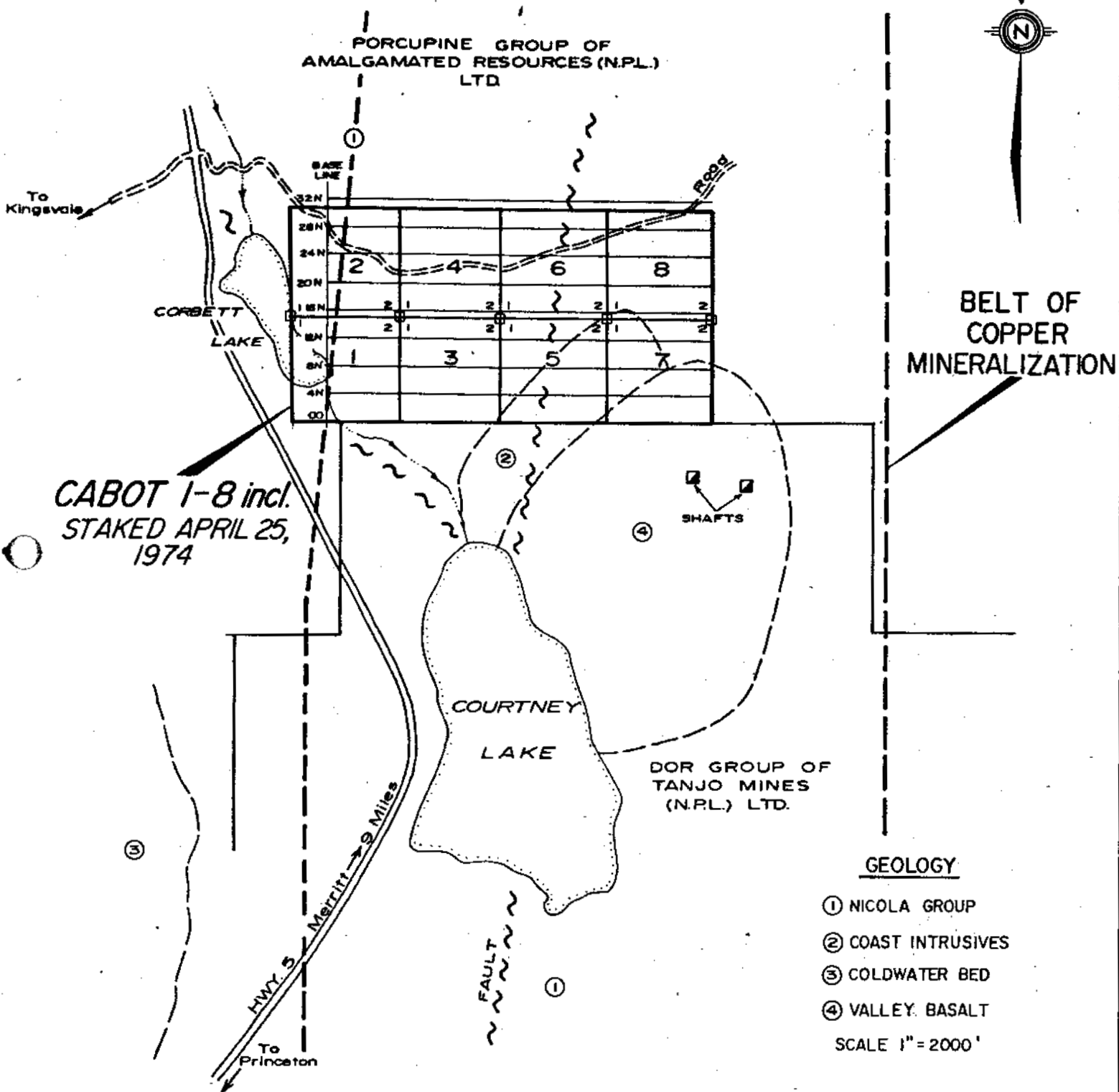




# CABOT MINERAL CLAIMS ASPEN GROVE AREA

PRINCETON - MERRITT HWY. No. 5  
NICOLA MINING DIVISION, BRITISH COLUMBIA  
120° 37' W. LONGITUDE, 50° 01' N. LATITUDE  
ELEV. 3500' - 3800', COMPASS DECL. 22° 20' E.

PORCUPINE GROUP OF  
AMALGAMATED RESOURCES (N.P.L.)  
LTD.



**CABOT 1-8 incl.  
STAKED APRIL 25,  
1974**

**BELT OF  
COPPER  
MINERALIZATION**

DOR GROUP OF  
TANJO MINES  
(N.P.L.) LTD.

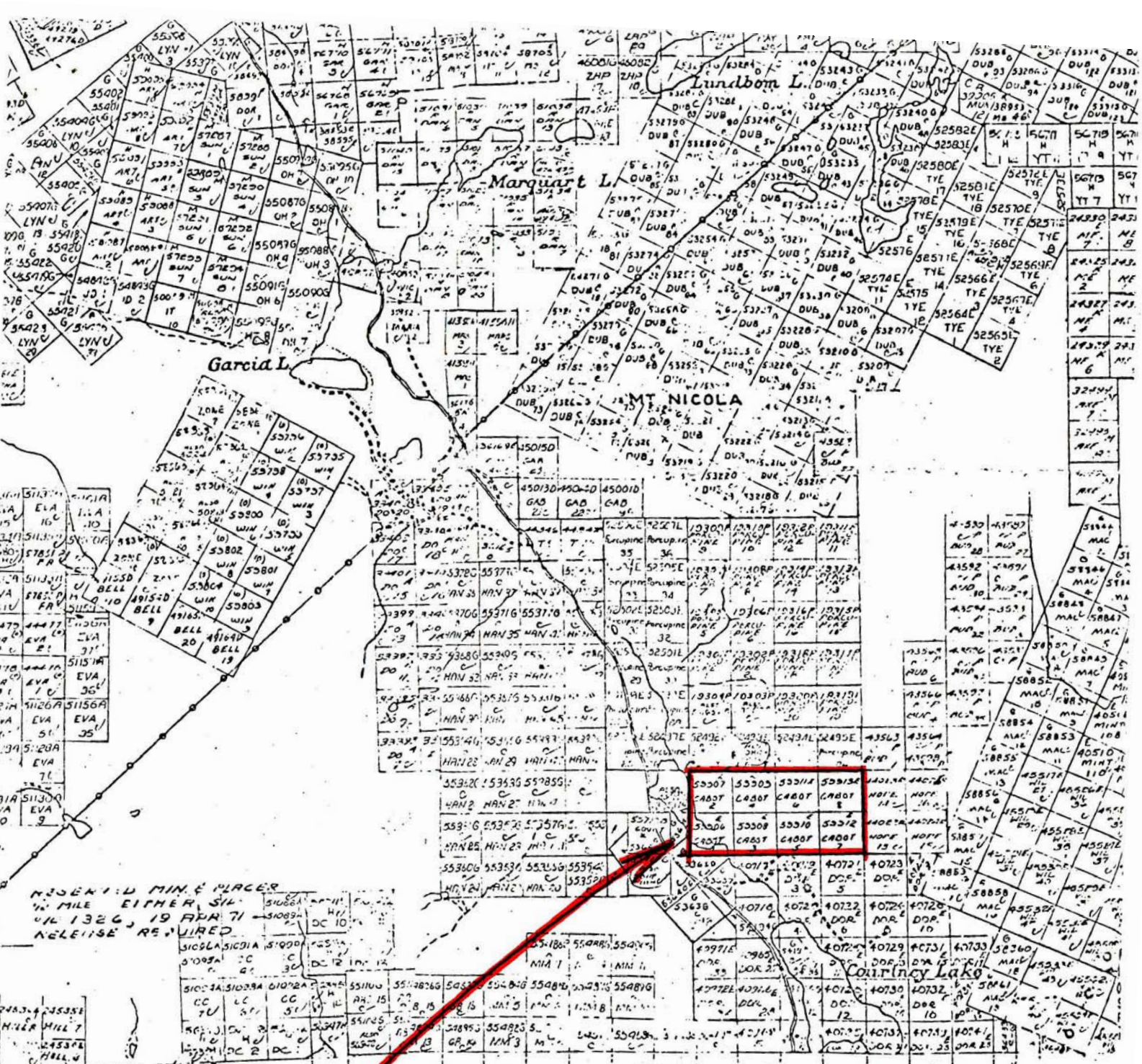
### GEOLOGY

- ① NICOLA GROUP
- ② COAST INTRUSIVES
- ③ COLDWATER BED
- ④ VALLEY BASALT

SCALE 1" = 2000'

1. Method - Chain & Compass
2. Central point - "Initial Post on Lake."
  - a) Base Line established - "Horizontal distance" 600' from Lake (Post)
3. Base line North-South "True"
4. Base line stations - 400' - Line stations - 200', except Lines 4 N. and 32 N. which were 100' stations
5. Pickets used at all stations

**5544  
MAP 1**

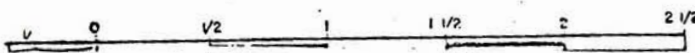


NOSENT D MINER PLACER  
 1/4 MILE EITHER SIDE  
 OF 1326, 19 APR 71  
 RELEASE REQUIRED

TO SOUTH SEE MAP 92H 15E

DEPARTMENT OF MINES AND PETROLEUM RESOURCES  
 VICTORIA, B.C.

MINERAL CLAIM MAP 92I/2E(M)



CABOT MINERAL CLAIMS  
 Aspen Grove Area  
 Nicola Mining Division  
 British Columbia

Record No. 59906 - 59913 inclusive

5544  
 MAP 2