



DEPARTMENT OF MINES AND PETROLEUM RESOURCES

FORM B (Section 51) MINERAL ACT

Sub-Mining Recorder RECEIVED AUG 20 1975 M.R. # \$ VICTORIA, B. C.

Affidavit on Application to Record Work

1. I, Alfred J. Garraway Agent for Zulu Explorations Ltd (NPL)
725 Suffolk Street (Name) 8 - 1070 Douglas Street (Name)
Victoria, B.C. (Address) Victoria, B.C. (Address)
Free Miner's Certificate No. 140824 Free Miner's Certificate No. 140816
Date issued January 29th, 1975 Date issued January 28th, 1975

MAKE OATH AND SAY:

- 2. I have done, or caused to be done, work on the LAD Five Group 40 Claims
LAD 89 - 110 & LAD 137 - 154 Mineral Claim(s)
Record No.(s) 67522 - 67543 & 67570 - 67587
Situate at Bowron River Area in the Cariboo Mining Division,
to the value of at least \$16,000.00 dollars. Work was done from the 21st day
of August 1974, to the 21st day of August 1975
3. The following is a detailed statement of such work done in the 12 months in which such work is required to be done.

(COMPLETE APPROPRIATE SECTION(S) A, B, C, D, BELOW)

A. PHYSICAL (Trenches, open cuts, adits, pits, shafts, reclamation, and construction of roads and trails)

(Give details as required by regulations)

Table with columns for details and COST. Includes a TOTAL row at the bottom.

I wish to apply \$ of this work to the claims listed below.
(State number of years to be applied to each claim and its month of record)

ZULU EXPLORATIONS LTD (NPL)

DRILLING P(a) DRILL HOLE

The drill used was a Longyear No. 38
Wire Line drill size BQ with 1 7/16" core

LOCATION

Bowron River Area, 40 miles SE of Prince George
Cariboo Mining Division
On the NW corner of the LAD 90 mineral claim
On Lot 4845
On the west side and 500 feet from the Bowron River

AZIMUTH 1⁰ quadrilateral 121⁰ 52 N.W.
Reference Map 93H/13W
Elevation 2,450
Inclination of drill
hole. 90⁰ from horizontal.

Depth of Drill Hole to August 20th, 1975 615 feet
Depth of Overburden 197 feet
B.W. casing to 420 feet

The drill core is stored at the camp at the Garraway Mine, and will be logged by Dr. J.E. Hughes, Consulting Geologist.

Department of
Mines and Petroleum Resources
ASSESSMENT REPORT
NO. 5577 MAP

ZULU EXPLORATIONS LTD (NPL)

LAD FIVE GROUP

P(a) DRILL HOLE

July 1st, 1975 - August 20th, 1975 - 7 weeks

3 men - 7 weeks each

A. Kary, John Grzyb, and A.J. Garraway

SALARIES

Salary each per month	-	\$1,500.00 Gross	
3 men at \$1,500.00 per month	.	.	\$4,500.00
Allowance for cooking.	.	.	\$ 500.00
Total per month.	.	.	\$5,000.00
3 men at \$1,250.00 per week	-	7 weeks	\$ 8,750.00

MAINTENANCE OF CAMP

Food and Supplies.	.	.	\$ 850.00
Propane and diesel fuel.	.	.	\$ 150.00
Total.	.	.	\$ 1,000.00

TRANSPORTATION

International 4x4 truck camp to drill and return ten miles	.	.	\$ 25.00
Total.	.	.	\$ 25.00

DRILLING

Rental per month - \$2,625.00			
7 weeks.	.	.	\$4,893.75
Drilling Mud - 50 sacks.	.	.	\$ 400.00
Two Casing Shoes	.	.	\$ 301.39
Two Tricone Bits	.	.	\$ 189.00
Six BQ Bits.	.	.	\$1,489.80
One Adapter.	.	.	\$ 262.50
Fuel - diesel and gas for drill.	.	.	\$ 200.00
Total.	.	.	\$ 7,736.44

\$17,511.44

ZULU EXPLORATIONS LTD (NPL)

LAD FIVE GROUP

P(a) DRILL HOLE

Work was commenced on July 1st, 1975, and three days were required to cut and clear the windfalls from the skid road to the drill site.

The drill and equipment was then moved from the camp to the drill site, a distance of five miles.

On July 5th, the drill was set up and casing put down to a depth of ten feet.

In addition to sand, gravel and clay the overburden contained a number of beds of boulders.

At a depth of 36 feet the tricone bit slipped to the side of a hard boulder breaking the B.W. casing at the connection with the adapter. Although drilling mud was being used the overburden caved making it impossible to recover the adapter and tricone bit. Another adapter had to be made up and shipped from Vancouver at a cost of \$262.50.

The drill had to be moved some ten feet in order to start another drill hole.

Drilling through 197 feet of overburden containing several beds of boulders was both time consuming and costly and used up two casing shoes, two tricone bits, two diamond bits and 40 sacks of drilling mud. The casing was drilled down to a depth of 208 feet and set in the solid strata.

The ground between the depths of 197 feet and 420 feet consisted of beds of sandstones, conglomerates and bentonites. At several different horizons the sandstone seams, or beds, contained considerable magnetite which was extremely damaging to the drill bits and required four bits to drill from 208 feet to 420 feet. Although 20 sacks of drilling mud was used, the mud failed to keep the bottom of the drill hole clean and the bits could not stand up to the abrasive effects of the magnetite.

It was decided to put the casing down to the bottom of the hole in order to prevent any magnetite entering the drill hole.

The 208 feet of casing was pulled out and a tricone bit attached. The casing was then drilled down to a depth of 420 feet. This required another 20 sacks of drilling mud because the high percentage of magnetite made it impossible to recirculate the mud.

The casing was again pulled to replace the tricone bit with a casing shoe. Part of the hole caved but the casing was eventually set in the solid at 420 feet. To clean the hole whilst pushing down the casing used up a further 12 sacks of drilling mud.

At this depth of 420 feet this hole had used up two casing shoes, two tricone bits, six diamond bits and 92 sacks of drilling mud.

Below 420 feet the strata consisted of seams of grey shale up to four feet in thickness, and separated with either sandstone or conglomerate seams of various thicknesses. Between 420 and 465 feet the shales were soft, and the conglomerate seams coarse and broken and difficult to core. With depth these shale and conglomerate seams become harder and more easily cored. Only two diamond bits were required to drill from 420 to 615 feet.

The depth of overburden and difficult drilling conditions, especially from 208 to 465 feet, was both time consuming and costly.

Seven weeks were required to put this hole down to a depth of 615 feet. Drilling was on a one shift basis.

The drilling of this hole is continuing below 615 feet and it is expected that the final depth will be between 1,200 and 1,500 feet.

A. J. Garraway
Project Manager

ZULU EXPLORATIONS LTD (NPL)

LAD FIVE GROUP

DRILLING LOGS FOR P(a) DRILL HOLE

DRILLERS
LOGS

1 - 197 Overburden, sand, gravel, beds of boulders
Casing set at 208 feet

197 - 250 Soft sandstone seams with bands of conglomerate

250 - 270 Soft broken conglomerate

270 - 275 Soft sandstone

275 - 310 Soft sandstone and conglomerate bands with magnetite

310 - 330 Soft sandstone with conglomerate bands

330 - 335 Broken conglomerate

335 - 388 Soft sandstone and conglomerate bands with magnetite

388 - 396 Conglomerate

396 - 413 Soft sandstone

413 - 420 Conglomerate
Casing drilled down to 420 feet

420 - 424 Grey Shale

424 - 427 Sandstone

427 - 432 Grey shales

432 - 436 Conglomerate

436 - 441 Sandstone

441 - 448 Grey shale

448 - 498 Interbedded grey shales and conglomerate bands

498 - 538 Grey shales

538 - 558 Conglomerate

558 - 598 Grey shales - harder

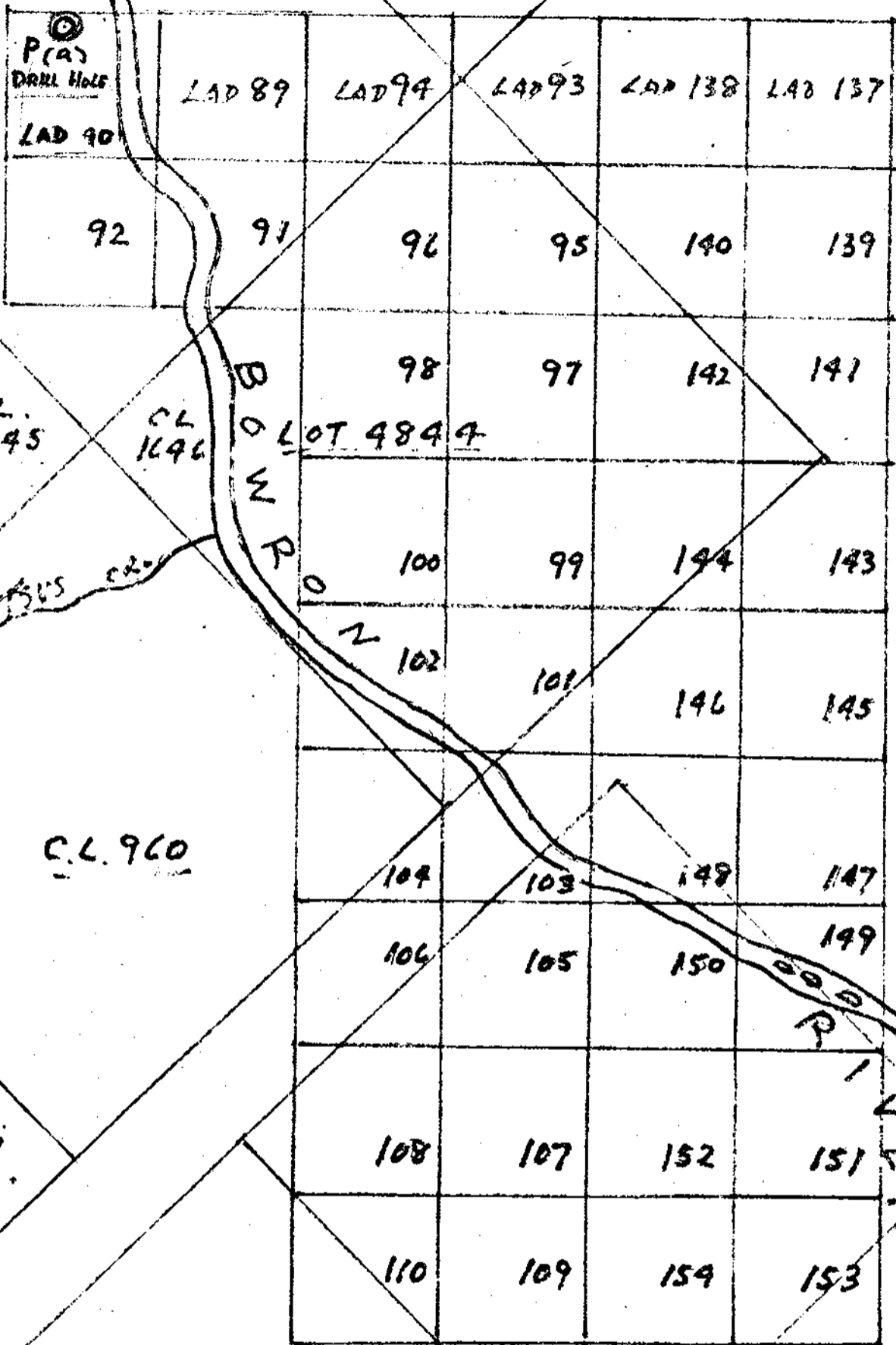
598 - 615 Conglomerate

Drill hole at a depth of 615 feet on August 20th, 1975.
Drill core stored at camp.

Drilling of this hole is continuing and when completed the core will be logged and the hole evaluated by Dr. J. E. Hughes, Consulting Geologist.

LOT 4845
CL 454

LOT 4846
CL 453



P(a)
DRILL HOLE

CL 1645

CL 1646

LOT 4847

CL 960

CL 961

CL 1640

CL 1641

CL 1643

TRUE
N

SCALE
1" = 1500'

LAD FIVE GROUP
P(a) DRILL HOLE

CL 959

CL 1642

[Handwritten signature]

LOT 4845
C.L. 454

LOT 4846
C.L. 453

P (a)
DRILL HOLE

LAD 89

LAD 94

LAD 93

LAD 138

LAD 90

92

91

96

95

140

BOZON

C.L. 1646

98

97

142

C.L. 1645

LOT 4844

100

99

144

TSUR CREEK

102

101

146

C.L. 960

104

103

148

RIVER

SCALE
1" = 1000'

C.L. 1641

LAD FIVE GROUP
P(a) DRILL HOLE

Handwritten signature

C.L. 1690

B. DRILLING

P(a) Drill Hole

(Details as per report submitted)

COST
\$17,511.44

Report to be submitted within 21 days

I wish to apply \$ 16,000.00 of this work to the claims listed below.

(State number of years to be applied to each claim and its month of record)

Two Years LAD 89 - 110 August

Two Years LAD 137 - 154 August

C. PROSPECTING

(Details as per report submitted)

COST

I wish to apply \$ _____ of this work to the claims listed below.

(State number of years to be applied to each claim and its month of record)

D. GEOLOGICAL, GEOCHEMICAL, GEOPHYSICAL (Includes line cutting)

(State type of work)

COST

TOTAL

I wish to apply \$ _____ of this work to the claims listed below.

(State number of years to be applied to each claim and its month of record)

NOTE—Dollar value of work done under A, B, C, or D sections, totalling \$200, may be applied as one year's work.

Who paid for the above-described work?

Name Zulu Explorations Ltd (NPL)

Address 8 - 1070 Douglas Street

VICTORIA, British Columbia

If you intend to claim a refund of cash in lieu under the provisions of the *Mineral Act*, you must make application on this affidavit under A, B, C, or D sections as applicable.

4. That I have not and will not use the work described herein in any way for the purposes of obtaining tax exemption on a Crown-granted mineral claim under the terms of the *Mineral Land Tax Act*.

SWORN and subscribed to at

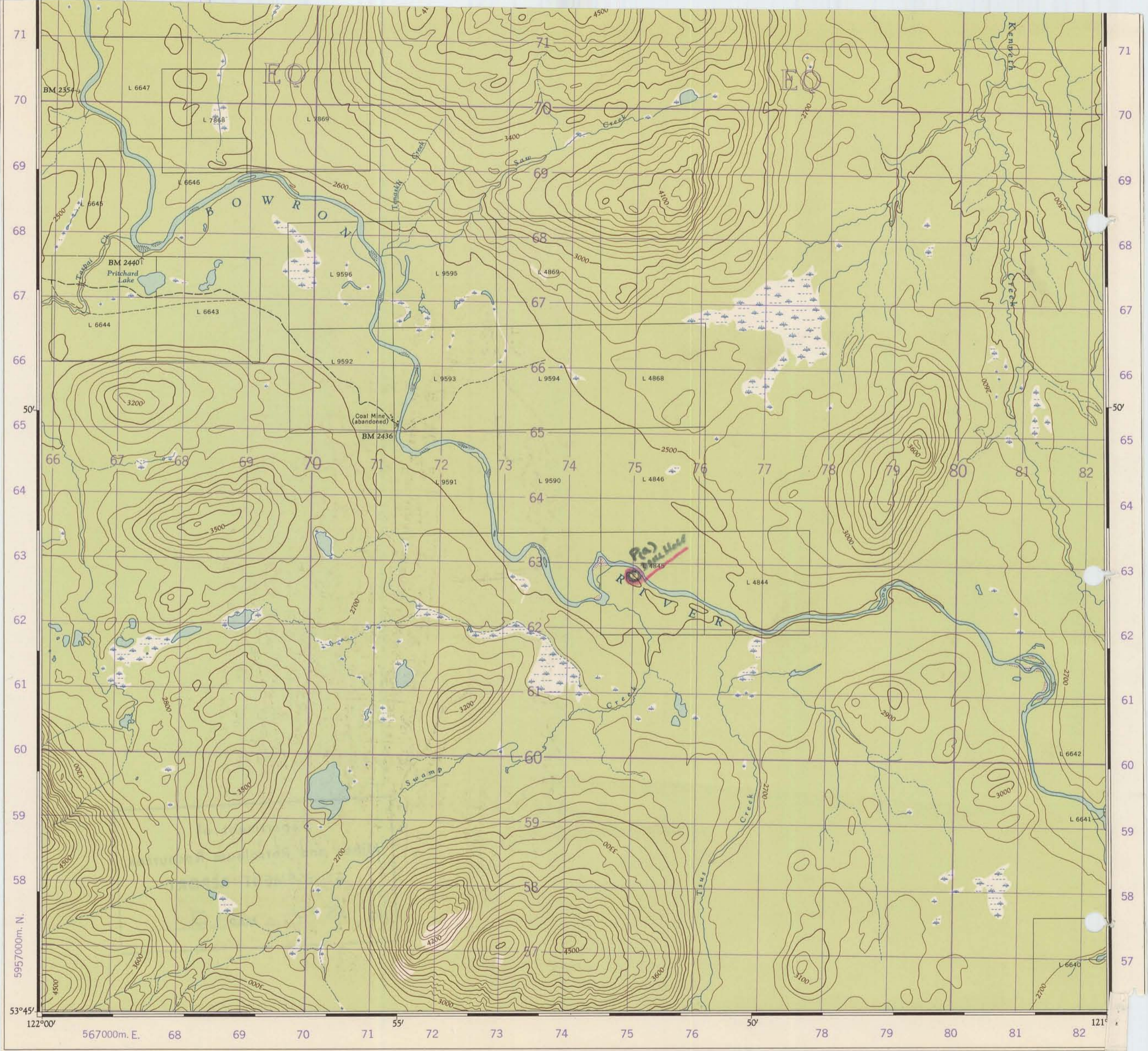
this _____ day of _____

19_____, before me—

*

Mining Recorder

* This affidavit may be taken by a person empowered to take affidavits by the Evidence Act of British Columbia.



Produced and printed by the SURVEYS AND MAPPING BRANCH, DEPARTMENT OF MINES AND TECHNICAL SURVEYS, 1961, from air photographs taken in 1953 and 1955.

HUTTON
CARIBOO DISTRICT
BRITISH COLUMBIA

P(a) DRILL HOLE

Établie et imprimée par la DIRECTION DES LA CARTOGRAPHIE, MINISTÈRE DES RELEVÉS TECHNIQUES en 1961, d'après les aériennes prises en 1953 et 1955.
5577 MAP 3