

COMINCO LTD.

EXPLORATION DIVISION

WESTERN DISTRICT

DIAMOND DRILLING REPORT

ON

CEDAR EXTENSION GROUP

Fort Steele Mining Division

Lat: N: 49° 44' ?

Long: W: 115° 29' ?

N.T.S. 82G/11

Report by:

G.L. WEBBER  
Cominco Ltd.  
Kootenay Exploration  
2450 Cranbrook St.  
Cranbrook, B.C.

under the supervision of

D.W. HEDDLE, P. ENG.

Department of	
Mines and Petroleum Resources	
ASSESSMENT REPORT	
NO. 5584	MAP

TABLE OF CONTENTS

	<u>PAGE</u>
GENERAL STATEMENT	1
INTRODUCTION	
General	1
STATEMENT OF EXPENDITURES	2
DECLARATION	3
STATEMENT OF QUALIFICATIONS	4
DIAMOND DRILL DATA	5
ATTACHMENTS	
Diamond Drill Logs	
# 1 Diamond Drill and Claim Location Map	
2 Location Map	

COMINCO LTD.

EXPLORATION DIVISION

WESTERN DISTRICT

CEDAR EXTENSION GROUP

Fort Steele Mining Division

GENERAL STATEMENT

This report describes the results and expenditures relating to diamond drilling and expenditures on the Cedar Extension Group of claims. Diamond Drilling was performed during the period July 15th to August 15th, 1975 and this material was prepared August 1975. Total expenditures for this diamond drilling program mounted to \$10,100.

It is requested that \$9,600 be applied to the Cedar Extension Group of 20 full-sized claims and two fractions for a total of 48 claim years of assessment credits. Affidavits on application for certificate of work and this report will be filed with the Mining Recorder at Cranbrook, B.C.

Two years assessment credits to be applied to:

CEDAR No. 1, 3, 7, 10, 12, 22, 23, 28, and 29.

COR No. 1, 2, 5, 6, 7, and 8.

New COR Fraction 1 and 2; New COR 3, 4, 9, 11, 13 and two additional years to the CEDAR 28 and 29.

INTRODUCTION

General

The geological mapping and diamond drilling was undertaken to evaluate the economic potential of the Cedar Extension Group of claims, and to meet Option Commitments to the Owners. Diamond drilling was performed on Cedar Claim No. 10.

Diamond drilling was performed by Elgin Exploration Company Limited of Calgary, Alberta. The drill used was a Wesdrill 60 equipped to recover B.Q. core and mounted on a Nodwell. Operator was G. Beilby.

The field program was under the direction of G.L. Webber and the entire program was supervised by D.W. Heddle, Chief Geologist, Cominco Ltd., Western District, registered B.C. Professional Engineer.

EXHIBIT "A"

Statement of Expenditures  
 Cedar Extension Group of Claims  
 Fort Steele Mining Division

## Diamond Drilling - Indirect

## Salaries (field)

G.L. Webber (Geologist) 22 days @ \$100 \$ 2,200.00

## Salaries (office)

G.L. Webber report and map preparation 2 days @ \$100 \$ 200.00

Transportation - Ford 3/4 Ton 4x4 \$ 600.00

\$ 3,000.00

## Diamond Drilling - Direct

## Elgin Exploration Company Ltd.

D.D. Hole C75-1 710' @ \$10.00 foot \$ 7,100.00

\$ 7,100.00

## TOTAL EXPENDITURES

\$10,100.00

Diamond Drilling - Indirect \$ 3,000.00

Diamond Drilling - Direct \$ 7,100.00

SIGNED: G. L. Webber  
 G.L. WEBBER

This Exhibit "A" to the Statutory  
 Declaration of G.L. Webber declared  
 before me this 10<sup>th</sup> day of Sept., 1975.

[Signature]  
 A Commissioner for taking Affidavits  
 for the Province of British Columbia.

IN THE MATTER OF THE  
 B.C. MINERAL ACT  
 AND  
 IN THE MATTER OF A DIAMOND DRILL PROGRAMME  
 CARRIED OUT ON THE CEDAR EXTENSION GROUP OF MINERAL CLAIMS  
 Located on the East Fork of the Wildhorse River  
 in the Fort Steele Mining Division of the  
 Province of British Columbia  
 More Particularly N.T.S. 82G/11

A F F I D A V I T

I, G.L. Webber, of the City of Kimberley in the Province of British Columbia, make Oath and say:

1. That I am employed as a Geologist by Cominco Ltd. and, as such, have a personal knowledge of the facts to which I hereinafter depose;
2. That annexed hereto and marked as "Exhibit A" to this my Affidavit is a true copy of expenditures incurred on Diamond Drilling on the Cedar Extension Group of Mineral Claims.
3. That the said expenditures were incurred between the 15th day of July, 1975 to the 15th day of August, 1975 for the purpose of mineral exploration on the above noted claims.

Sworn Before Me at the city )  
 of Kimberley in the Province of )  
 British Columbia, this 10<sup>th</sup> day )  
 of September, 1975. )

G.L. Webber  
 G.L. WEBBER

[Signature] )  
 A Commissioner for taking Affidavits )  
 in the Province of British Columbia. )

COMINCO LTD.

EXPLORATION DIVISION

WESTERN DISTRICT

STATEMENT OF QUALIFICATIONS

G.L. Webber has been involved in various types of mineral exploration work for Cominco Ltd. over the last twenty years.

I consider him well qualified to carry out the report on all phases of geological exploration work.



---

D.W. HEDDLE  
Chief Geologist, Exploration  
Western District

August 1975

DRILL DATA FOR

DIAMOND DRILL HOLE ON THE CEDAR EXTENSION GROUP

<u>D.D. Hole</u>	<u>Location</u>	<u>Dip</u>	<u>Brng.</u>	<u>Depth</u>	<u>Core Size</u>	<u>Unit Cost</u>	<u>Total Cost</u>
C75-1	East Fork	-45°	114°	710'	B.Q.	10.00	7,100

Elevation of collar 5,780'

Diamond Drilling - Indirect \$ 7,100.00  
Diamond Drilling - Direct \$ 3,000.00

TOTAL CREDIT..... \$10,100.00

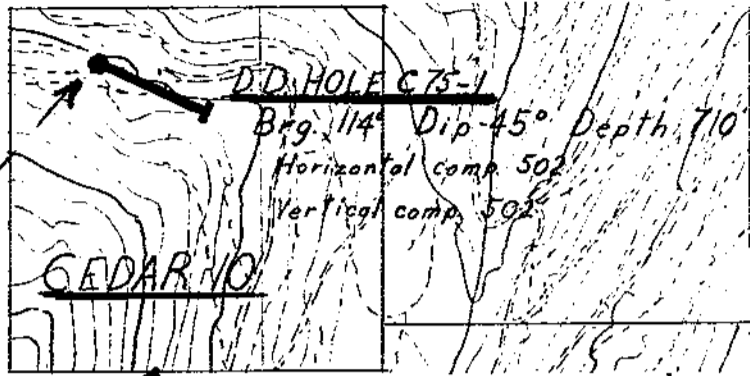
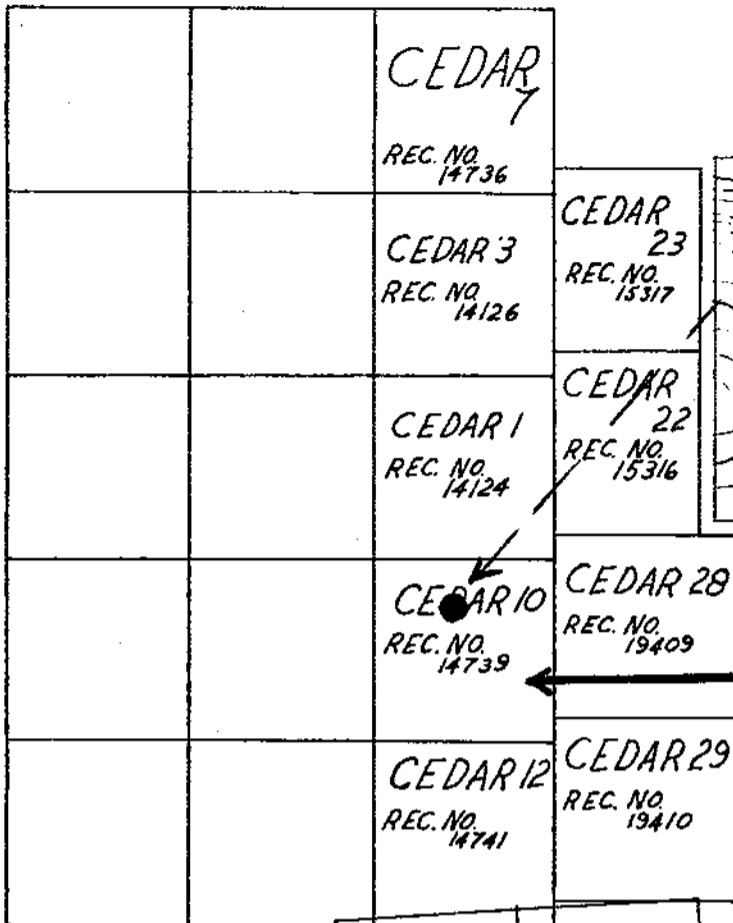
All drill cores are stored at Kimberley, B.C. on the Sullivan Mine Property.

SIGNED: G.L. Webber  
G.L. WEBBER

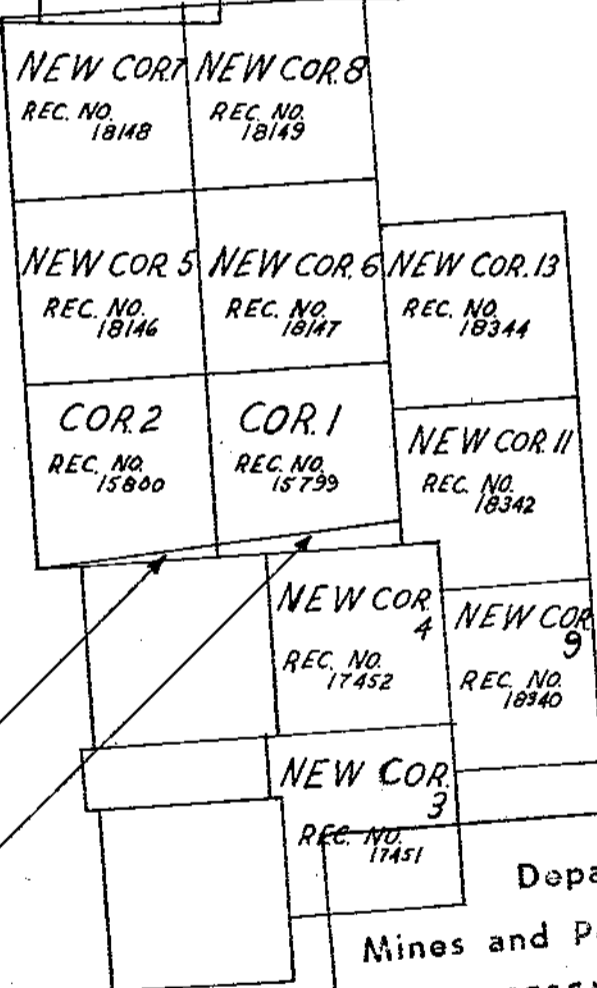
ENDORSED BY: D.W. Heddle  
D.W. HEDDLE, P. Eng.

APPROVAL FOR  
RELEASE BY: W.T. Irvine  
W.T. IRVINE, P. Eng.





Scale 1" = 800'



NEW COR. FR. 1  
REC. NO. 18144

NEW COR. FR. 2  
REC. NO. 18145

**LEGEND**

- CLAIM BOUNDARY
- DIAMOND DRILL HOLE

Department of  
 Mines and Petroleum Resources  
**ASSESSMENT REPORT**  
 NO. 5584 MAP 1

5584 MAP 1



Drawn by: D.P.M.		Traced by:	
Revised by	Date	Revised by	Date

Diamond Drill & Claim  
Location Map

82G/11W

Scale: 1" = 1600'

Date: August, 20, 1975.

Plate:



## Drill Hole Record



Property	CEDAR	District	FORT STEELE	Hole No.	C75-1
Commenced	July 25th, 1975	Location	East Park	Tests at	Hor. Comp. 499'
Completed	Aug. 6th, 1975	Core Size	B.O.	Corr. Dip	-45°
Co-ordinates				True Brg.	114°
Objective				% Recov.	96%
					Logged by GLW and DLP
					Date Sept. 8th, 1975

Footage		Description	Sample No.	Length	Analysis					
From	To									
0	20	OVERBURDEN								
20	26	Syenite								
26	61	Marble								
		Syenite porphyry.								
		Light green (from tremolite alteration) light grey, vuggy in part.								
		Amorphous chrysotile, generally along fractures. Core has a								
		pseudobreccia appearance. Small amounts of pyrite and magnetite								
		disseminated and along fractures at 45'.								
61	63	Syenite								
		Syenite porphyry, pinkish.								
63	212	Dolomite								
		Medium grey to very light grey (N-6, N-7) serpentized with tremolite de-								
		velopment, pseudobreccia sections. Pyrite and magnetite <1%.								
212	215	Dolomite								
		Breccia, mottled, tremolite - actinolite alteration; matrix contains some								
		chlorite. Pyrite and magnetite occurs as euhedral porphyroblasts in								
		clasts and matrix, clasts or serpentized in part ± 2% Fe.								
215	235	Dolomite								
		Same as 63-212 - magnetite generally rims the pyrite.								
235	314	Dolomite								
		Finely crystalline, pseudobreccia appearance in part. N-6, N-7,								
		serpentized, tremolite and actinolite alteration. 235-236 ± 5% pyrite with								
		Tr magnetite, similar sections at 243 and 256, two feet of ± 8% pyrite								
		chloritized sediments at 262, 6in. pyrite at 270 ± 15% finely disseminated								
		pyrite throughout.								
314	332	Dolomite								
		Tremolitic dolomite, vuggy, up to 1 mm vugs containing tremolite crystals.								
332	425	Dolomite								
		Serpentinized and pseudobrecciated in part, some pinkish grey mottling								
		(5YR 8/1) ± 1% pyrite and magnetite. Sediments become more of a massive								
		dolomite from 398'.								

## Drill Hole Record



Property	CEDAR	District	FORT STEELE	Hole No.	C75-1
Commenced		Location		Tests at	Hor. Comp.
Completed		Core Size		Corr. Dip	Vert. Comp.
Co-ordinates				True Brg.	Logged by
Objective				% Recov.	Date

Footage		Description	Sample No.	Length	Analysis						
From	To										
425	446.5	Syenite Pinkish grey, pits up to 2 mm. lined with euhedral pyrite. Total pyrite $\pm$ 2%.									
446.5	469	Dolomite Massive, mottled, pyrite and magnetite disseminated throughout, 6 in. tremolite at 465'; associated pyrite $\pm$ 3%, N-6, N-7, with alterations to light brownish grey (5YR c/1) some alteration to tremolite and chrysotile.									
469	508	Dolomite Massive, N-5, N-6, mottled, tremolite and serpentized sections along fractures, at 485' is 1' of $\pm$ 5% pyrite, at 487' is 6 in. pyrite $\pm$ 2%. Associated chlorite in argillaceous dolomite at 495'.									
508	525	Dolomite Tremolitic, greenish grey (5G6/1) contains sections of pseudo- breccia, with 1 to 6 in. sections of chloritized argillaceous sediments. Pyrite 1 to 10% in matrix, serpentized along fractures.									
525	578	Dolomite Massive (N-7) finely crystalline, serpentized along fractures, chloritized irregular fracture sets, containing up to 20% pyrite. Occasional short sections of tremolite, containing up to 1% disseminated pyrite.									
578	606	Dolomite Massive tremolitic, with short sections of N-7, finely crystallized dolomite. Tremolite sections containing irregular chloritic, argillaceous fracture sets, with pyrite up to 20%.									

## Drill Hole Record



Property CEDAR

District FORT STEELE

Hole No. C75-1

page 3

Commenced

Location

Tests at

Hor. Comp.

Completed

Core Size

Corr. Dip

Vert. Comp.

Co-ordinates

True Brg.

Logged by

Objective

% Recov.

Date

Footage

Description

Sample  
No.

Length

Analysis

From To

606 626

Dolomite

Mottled, N-6, N-7, disseminated magnetite and pyrite.

± 1%. Finely crystalline throughout.

626 706

Dolomite

Altered to cream white mottled marble, chloritized along  
fractures. Weakly disseminated with pyrite and magnetite.

Contains thin pyrite in argillaceous partings. END

Core stored on the Sullivan Mine Property at Kimberley, B.C.

*B. L. Dabbs*

Claim

T Brg.

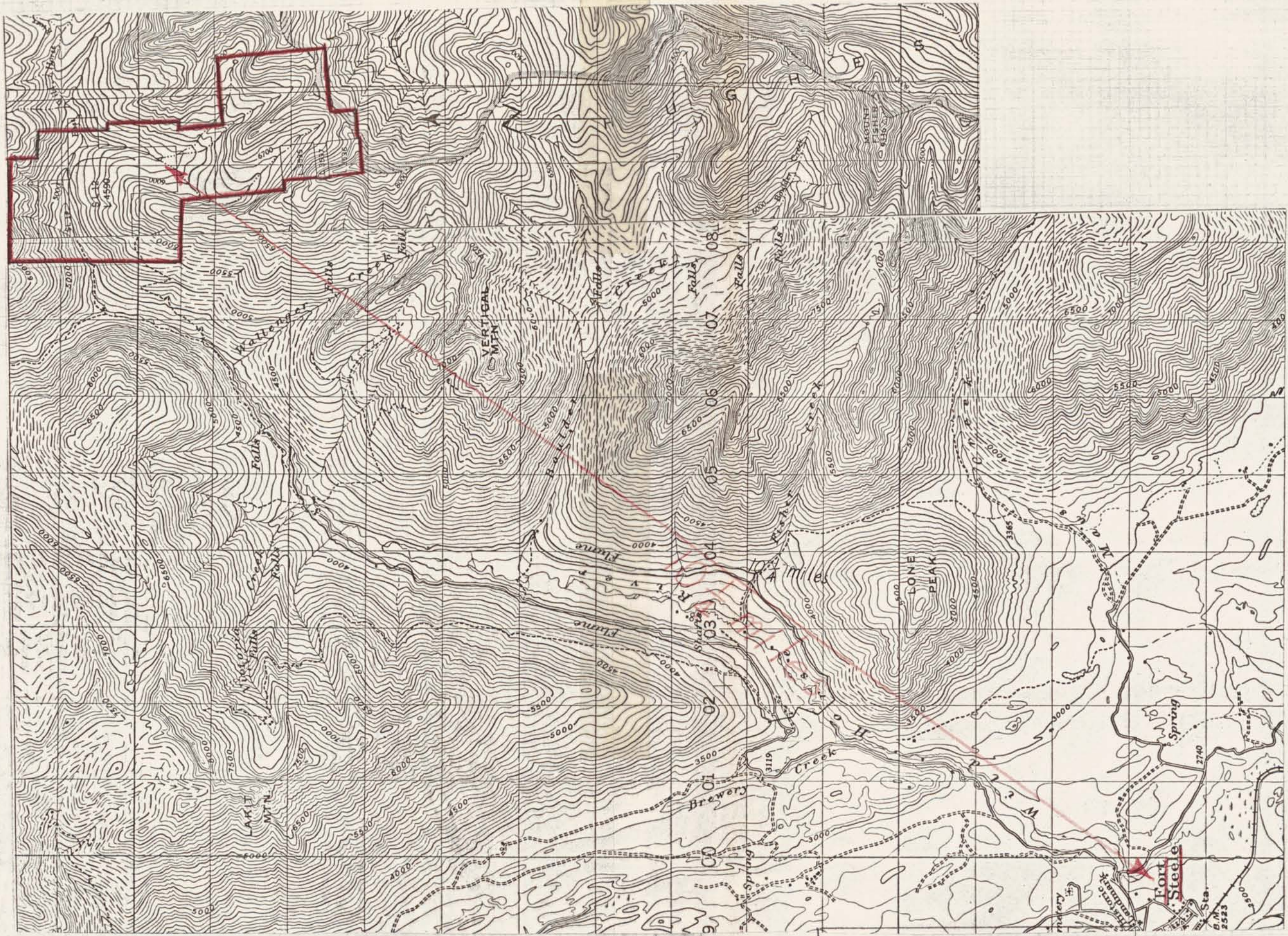
Collar Dip

Elev.

Length

Hole No.

Sheet



*Legend*  
 — Claim Boundary  
 — important Location

Department of  
 Mines and Petroleum Resources  
 ASSESSMENT REPORT

NO. 5584 MAP 2



Drawn by:		Traced by:	
Revised by	Date	Revised by	Date

Drawn by: D.P.M.		Traced by:	
Revised by	Date	Revised by	Date

Cedar Claim Location Map  
 82G/11 + 82G/12

Scale: 1" = 50,000'      Date: August, 21, 1975.      Plate: