



IMPERIAL OIL LIMITED

Minerals Section
E. L. Pekar
Chief Geologist, Western Canada

#314 - 1281 - W. Georgia Street
Vancouver 5, B. C.
Area Code 604 - 681-8231

MV-1947

September 12, 1975

File: 6023

The Mining Recorder
Nanaimo Mining Division
Court House
Nanaimo, B.C.

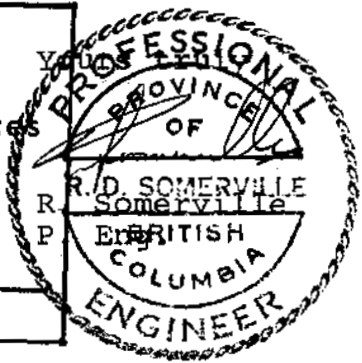
Dear Sir:

I am enclosing the following documents as part of a Diamond Drilling Report:

- 1) A 1:50,000 topographical map showing the geographical location of the property.
- 2) A copy of each of four 1" = 800' claim and topographical maps showing the location of diamond drill holes 75 - 1 through 75 - 3. These maps are keyed to the 1:50,000 maps by the claim boundary and by the position of topographic features such as McKay Lake.
- 3) A copy of each of the logs for holes 75 - 1 through 75 - 3, signed by myself.
- 4) A copy of a drill contract between IOL and Interior Drilling.
- 5) A statement of costs for the drilling work covering the hole logs being filed as assessment work - complete with invoices from the contractor.
- 6) A copy of each of the two Affidavits on Application for Certificate of Work for the two groups.

I trust you will find everything in satisfactory order.

Department of
Mines and Petroleum Resources
ASSESSMENT REPORT
NO. 5604 MAP



RS:JT
Encl.

Maps

1a Index
map

1, 2, 3, 4 in pocket
(claim - DDH loc. maps)

DIAMOND DRILL CORE LOG

DRILL HOLE NO. MT. WASHINGTON LOCATION: 1200' @ 230° from No.1 Post
1975 - 3 of MWC 222 on crest of

AZIMUTH: - CLAIM: MWC 222 FR.
CORE SIZE:

INCLINATION: -90° CORE STORAGE: IOL Warehouse
Puntledge Ave.
Courtenay, B.C.

ELEVATION: -4690

DESCRIPTION

FROM	TO	DESCRIPTION
0	600'	<u>Intrusive Breccia.</u> composed of angular to rounded loosely packed clasts of predominantly hornblende quartz-diorite mixed with minor quantities of siltstone (Comox?) fragments and more rarely altered chloritic fragments which conceivably could be basalt in origin. The matrix consists of finely ground rock flour and very small fragments with some minor silicification.
	at 312'	3" silicified zone at 90° trace of pyrite and chalcoppyrite.
	at 324½'	3 x 1" over 8" silicified bands. 25% chalcoppyrite over ½" in one band.
	at 330'	silicified diorite fragment with traces of chalcoppyrite in chlorite.
341	365	intense clay alteration with frequent silicified patches - occasional 1" - 3" quartz vein sparse pyrite arsenopyrite and realgar.
365	372	moderately fractured, occasional bleached patch, very little alteration.
372	390	moderate clay alteration in patches, minor pyrite, arsenopyrite, and realgar.
390	422	frequent silicified patches with quartz stringers, carrying pyrite, arsenopyrite and realgar.
422	439	increasing pyrite to average 3% total sulphide, minor arsenopyrite, realgar decreases to negligible, heavy clay alteration.
439	444	secondary biotite rimming of breccia fragments, minor sulphides.

DIAMOND DRILL CORE LOG

DRILL HOLE NO. Mt. Washington 75-1 LOCATION: 350' @ 284° from the
 No. 2 post MWC226
 CLAIM: MWC226
 AZIMUTH: -- CORE SIZE: BQ
 INCLINATION: -90° CORE STORAGE: IOL Warehouse
 Puntledge Rd.
 ELEVATION: ~3600' Courtenay, B.C.
 LENGTH: 608' DESCRIPTION

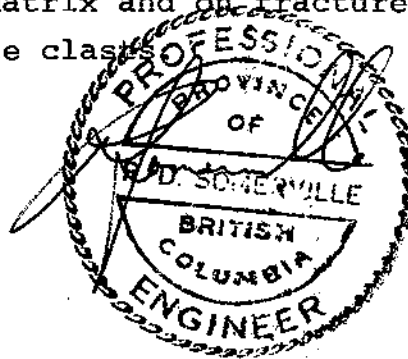
FROM	TO	DESCRIPTION
		Drilled from August 16 to 21, 1975.
0.0	3.5	Collar
3.5	7.0	Overburden
7.0	55.0	Breccia composed of angular, loosely packed clasts of quartzite and siltstone, minor diorite, cemented by a matrix of comb quartz lined with chlorite and infilled with calcite. Most clasts are moderately clay altered and sericite occurs in random patches. Minor small patches of pyrite occur in the vugs with trace arsenopyrite and realgar.
55.0	58.0	Diorite clast with minor pyrite.
58.0	86.0	Breccia as from 7.0 to 55.0 with rare patches of pyrite in the matrix.
86.0	118.0	Breccia with abundant large clay altered diorite clasts. Rare pyrite and arsenopyrite in 2 quartz-sericite veins.
118.0	148.0	Breccia with weakly clay altered, small, angular quartzite and siltstone clasts in a matrix of comb quartz, rare chlorite, and calcite. Rare pyrite in matrix.
148.0	149.2	Minor quartz veins with molybdenite, minor arsenopyrite and trace chalcopyrite.
149.2	169.0	Breccia with weakly clay altered quartzite and siltstone clasts, 20% diorite clasts, in a matrix with rare quartz, abundant chlorite and minor calcite.
169.0	175.0	Single diorite clast in the breccia.
175.0	220.0	Breccia with moderately clay altered clasts. Rare pyrite, arsenopyrite and realgar in matrix and in quartz veins.
220.0	222.5	Diorite clast with 1% chalcopyrite on pre-breccia chloritized and silicified fractures.

DRILL HOLE NO. Mt. Washington 75-1 LOCATION: 350' @ 284° from the
No. 2 post MWC 226

DESCRIPTION

FROM	TO	DESCRIPTION
222.5	227.7	Breccia
227.7	242.0	Diorite clast with 1% chalcopyrite, minor pyrite on pre-breccia fractures. 11
242.0	286.5	Breccia with mainly angular quartzite and siltstone clasts in a matrix of comb quartzite, rare to abundant chlorite and calcite infillings. No sulphides present.
286.5	303.5	Diorite clast with minor pyrite and chalcopyrite on pre-breccia fractures.
303.5	394.0	Breccia with mainly quartzite and siltstone clasts, minor diorite clasts in a matrix of comb quartz and calcite with no chlorite. Minor pyrite and arsenopyrite in calcite infillings, disseminated in clay altered clasts or on fractures.
394.0	504.5	Breccia with fresh to slightly clay altered quartzite and siltstone clasts, 25% diorite clasts in a matrix of rare comb quartz, abundant chlorite and patches of calcite. Rare occurrences of trace sulphides in matrix.
504.5	527.5	Diorite clast with no sulphides.
527.5	554.5	Breccia with mainly quartzite and siltstone clasts and 15% diorite clasts.
554.5	573.0	Breccia with 75% diorite clasts.
573.0	594.0	Breccia with 85% quartzite and siltstone clasts. Minor pyrite and realgar in matrix and on fractures.
594.0	608.0	Breccia with 90% diorite clasts

END



DIAMOND DRILL CORE LOG

DRILL HOLE NO. Mt. Washington 75-2 LOCATION: from No. 1 post MWC 226
 350' @ 305°
 CLAIM: MWC 224
 AZIMUTH: 000° CORE SIZE: BQ
 INCLINATION: -70° CORE STORAGE: IOL Warehouse
 Puntledge Rd.
 ELEVATION: ≈3650' Courtenay, B.C.
 LENGTH: 607' DESCRIPTION

FROM	TO	DESCRIPTION
		Drilled from August 21 to September 1, 1975
0.0	3.0	Overburden
3.0	50.5	Breccia with 95% angular, moderately loosely packed, slightly clay altered quartzite and siltstone clasts and 5% diorite clasts. Matrix consists of comb quartz cementing the clasts, abundant chlorite and calcite infillings.
50.5	66.0	Silicified, biotitized diorite clast with <1% chalcopyrite, minor pyrite.
66.0		1 inch quartz vein with sphalerite and pyrite in sericite and clay altered breccia.
66.0	155.0	Breccia with 95% quartzite and siltstone clasts, weakly clay altered and 5% diorite. Trace pyrite and realgar in a few siltstone clasts.
155.0	204.5	Breccia as above and with 3 thin (6" to 15") diorite porphyry dikes.
204.5	223.0	Breccia with moderately clay altered clasts, rare chlorite in the matrix and common calcite. Small patches of pyrite arsenopyrite and realgar in the matrix and one 1½" quartz vein with arsenopyrite and pyrite.
223.0	243.5	Breccia consisting mainly of large silicified quartzite clasts.
243.5	254.0	Breccia with four clasts of basalt.
254.0	284.0	Breccia with moderately clay altered quartzite clasts. Quartz-carbonate veins with 10% arsenopyrite from 267.0 to 268.0.
284.0	345.5	Breccia with mainly fresh to slightly clay altered quartzite and siltstone clasts and rare basalt. Minor scattered patches and veins with pyrite.
345.5	347.0	Dike of diorite porphyry.

DIAMOND DRILL CORE LOG

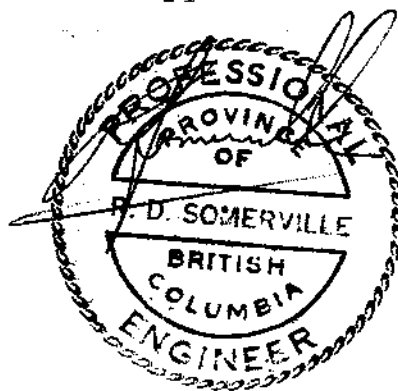
page 2.

DRILL HOLE NO. Mt. Washington 75-2 LOCATION: 350' @ 305° from No. 1 post MWC 226

DESCRIPTION

FROM	TO	DESCRIPTION
347.0	408.0	Breccia with 90% quartzite and siltstone clasts and 10% basalt. No sulphides.
408.0	409.5	Diorite dike.
409.5	479.0	Breccia with 10 - 15% basalt clasts. The only sulphides present are minor pre-breccia disseminations of pyrite in the basalt.
479.0	527.0	Breccia with 60% large basalt clasts and 40% quartzite and siltstone.
527.0	560.5	Basalt cut by two stages of mineralized quartz veins. Fracture and quartz veining intensity averages 5 per foot. Slightly less than 1% pyrite occurring in quartz veins and silicified fractures.
560.5	607.0	Breccia with 85% slightly clay altered quartzite and siltstone clasts and 15% basalt. One inch thick quartz-carbonate vein with arsenopyrite and pyrite and disseminated sphalerite and pyrite at 602.5'.

FND



COST STATEMENT

DIAMOND DRILLING - MOUNT WASHINGTON PROPERTY

PROJECT 6023 (MTW & MWC CLAIMS)

RE: D.D.H. NOS. 75-1; 75-2

1. CONTRACTOR COSTS:

Interior Diamond Drilling Ltd.		
Invoice - August 25 1975	\$	9,720.00
Invoice - Sept. 5 1975		9,705.00
Crown Zellerbach Limited		
Invoice dated August 29, 1975 to clear drill sites		600.00
Subtotal	\$	<u>20,025.00</u>

2. TRANSPORATION COSTS

Okanagan Helicopters Limited		
Invoice No. 104776 (D.D.H. 75-1)		865.15
Invoice No. 104784 (D.D.H. 75-2)		831.63
Budget Rent-A-Truck		
Invoice No. T-DT06632		136.51
Westminster Leasing Ltd.		
August 11 to Sept. 2, 1975 @ \$498.75		370.04
Gas, oil, service, repairs		63.75
Subtotal	\$	<u>2,267.08</u>

3. LABOUR

C. Aird (Supervisor)		
August 14, 1975 -1 day @ \$96.00	\$	96.00
D. Bridge (Project Geologist)		
August 8 to 25 -18 days		
Sept. 2 -19 days @ \$60.00	\$	1,140.00
R. Somerville (Geological Supervisor)		
July 30, 31 -2 days		
August 7, 8 -2 days		
August 19 to 21 -3 days		
August 25 to 31 -7 days		
Sept. 1 to 3 -3 days		
Sept. 10 to 12 -3 days		
-20 days @ \$96.00	\$	1,920.00

COST STATEMENT

2.

DIAMOND DRILLING - MOUNT WASHINGTON PROPERTY

3. LABOUR (Cont'd.)

Amount brought forward	\$	3,156.00
G. Bloy (Assistant) August 5 to 22 -18 days @ \$38		684.00
M. Weber (Assistant) August 5 to 22 -18 days @ \$29.60		532.80
G. Wilson (Assistant) August 25 to 29 -5 days @ \$31.20		156.00
Subtotal	\$	4,528.80

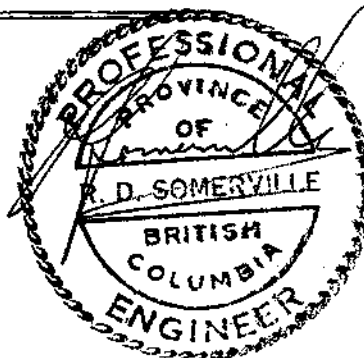
4. CAMP COSTS - AUGUST, 1975

Core Storage logging area @ \$200/mo.	\$	200.00
Food, Lodging, Hardware, Miscellaneous including-ground and air transportation expenses from Vancouver		1,406.00
Subtotal	\$	1,606.00

5. SERVICES

Map Reproduction, Utilities	\$	49.37
-----------------------------	----	-------

TOTAL COSTS FOR DDH 75-1
AND DDH 75-2 \$ 28,476.25



STATEMENT / ÉTAT DE COMPTE

IN ACCOUNT WITH / EN COMPTE AVEC

Interior Diamond Drilling Ltd.
R.R. #2
Summerland, B.C.

TO/A
Imperial Oil Limited
314 - 1281 West Georgia Street
Vancouver, B.C.

Terms / Conditions

Date August 25 1975

	Diamond Drilling on			
	Mt. Washington claims			
	in Courtenay, B.C.			
	608 ft. @ \$15.00/ft.		\$9,120.00 ✓	
	Move - 'Copter base to			
	1st. drill site		600.00 ✓	
	Total		<u>\$9,720.00</u>	
	Invoiced by			
	<i>Norman May</i>			
	APPROVED FOR PAYMENT			
	BY <i>[Signature]</i>			
	CHARGE <u>83-025-28-6023-150-3201</u>			

INVOICE

IN ACCOUNT WITH / EN COMPTE AVEC

Interior Diamond Drilling Ltd.
R.R. #2
Summerland, B.C.

TO / A

Imperial Oil Limited
314 - 1281 West Georgia Street.
Vancouver, B.C.

Date Sept. 5, 1975

Terms / Conditions

	Diamond Drilling on		
	Mt. Washington claims -		
	DDH MW 75 - 2		
	607 ¹ / ₂ ft. @ \$15.00/ft.	\$9,105.00	✓
	Move - 1st drill site to		
	2nd drill site	600.00	✓
	Total	\$9,705.00	✓
	Invoiced by		
	APPROVED FOR PAYMENT		
	BY <i>[Signature]</i>		
	CHARGE 83-025-28-6023-150-3201		
	<i>[Signature]</i>		

SEP 9 ENT'D

CrownZellerbach
Coast Wood Supply Division



SEP 2 REC'D

Crown Zellerbach Canada Limited
Vancouver, B.C.

Imperial Oil Ltd.,
#314 - 1281 West Georgia St.,
Vancouver, B.C.

Location: Box 3310,
Courtenay, B.C.

Attention: Mr. R. D. Somerville

Date: August 29, 1975

Debit Memorandum

We are today debiting your account as follows:

Re Clearing Drill Sites - Mt. Washington

Falling timber - 4 man days at \$150.00/day

\$600.00

APPROVED FOR PAYMENT

BY [Signature]

CHARGE 83-025-28-6023-1150-3201

COST STATEMENT
DIAMOND DRILLING - MOUNT WASHINGTON PROPERTY
PROJECT 6023 (MTW & MWC CLAIMS)
SEPT. 3 TO SEPT. 15, 1975
RE: D.D.H. 75-3

1. CONTRACTOR COSTS

Interior Diamond Drilling Ltd. Invoice - Sept. 12, 1975	\$	10,200.00
Subtotal	\$	10,200.00

2. TRANSPORTATION COSTS

Okanagan Helicopters Invoice #100977: D.D.H. #3 Invoice #100984: D.D.H. #3	\$	1,225.48 303.90
Westminster Leasing Ltd. Sept. 3 to 11, 1975		149.63
Gas, oil, services, repairs		251.11
Subtotal		1,930.12

3. LABOUR

C. Aird Sept. 10 -1 day @ \$96.00	\$	96.00
D. Bridge Sept. 3 to 12 -10 days @ \$60.00		600.00
R. Somerville Sept. 4 to 8 -5 days @ \$96.00		480.00
Subtotal	\$	1,176.00

4. CAMP COSTS - SEPTEMBER 1975

Core Storage and logging area @ \$200/mo.	\$	200.00
Food, Lodging, air fares. ground transportation, general		580.00
Subtotal	\$	780.00

COST STATEMENT

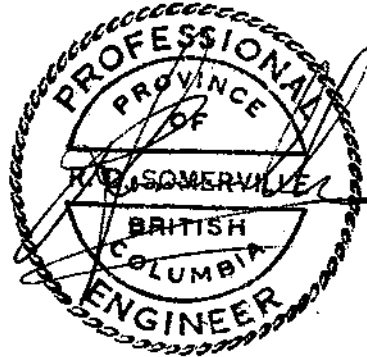
2.

DIAMOND DRILLING - MOUNT WASHINGTON PROPERTY

5. SERVICES

Map Reproduction, Utilities \$ 25.00

TOTAL COSTS FOR HOLE NO.75-3 \$ 14,111.12



IN ACCOUNT WITH / EN COMPTE AVEC

Interior Diamond Drilling Ltd.
R.R. #2
Summerland, B.C.

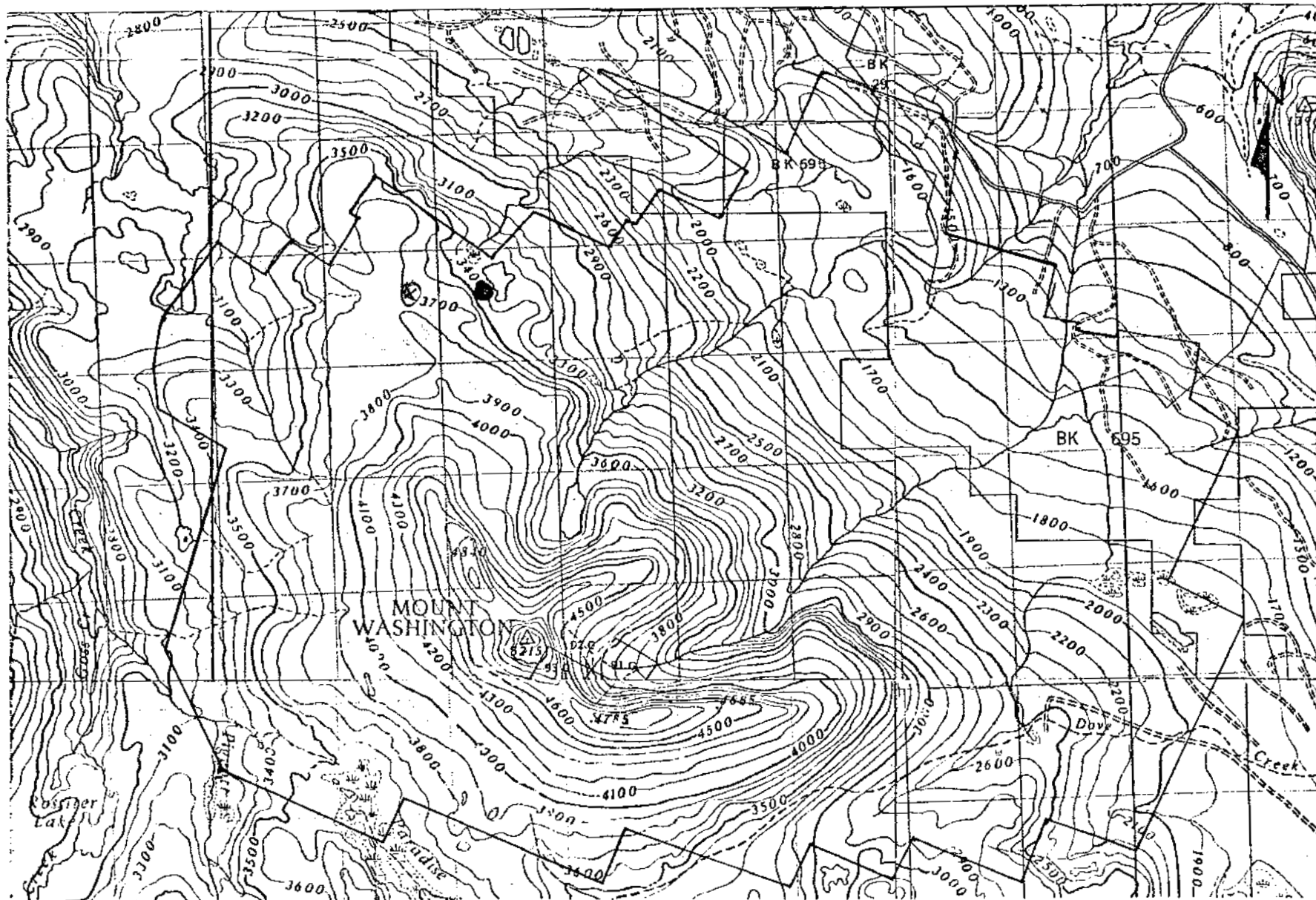
10/A

Imperial Oil Limited
314 - 1281 West Georgia Street
Vancouver 5, B.C.

Terms / Conditions

Date Sept. 12 1975

Diamond Drilling on				
Mt. Washington claims -				
DDH MW 75 - 3				
600 ft. @ \$15.00 /ft.			\$9,000.00	✓
Moves - 2nd drill site				
to 3rd drill site and				
3rd drill site to				
'copter site base				
@ \$600.00			1,200.00	✓
Total			\$10,200.00	✓
<i>A. M. Roy</i>				
Invoiced by				
APPROVED FOR PAYMENT				
BY <i>[Signature]</i>				
CHARGE <u>83-025-28-6023</u> - 1150-3201				



Mt. Washington Claim Boundary and Index Map

Scale 1:50,000

To accompany Report by R. Somerville dated Sept. 12/75

5604 Map 1a

DRILLING CONTRACT

THIS AGREEMENT made this 5th day of *Sept.* A.D., 1975.

BETWEEN:

INTERIOR DIAMOND DRILLING LTD., a body corporate, and registered to carry on work in the Province of British Columbia (hereinafter called "the Contractor")

- and -

IMPERIAL OIL LIMITED, a body corporate, with Head Office at the City of Toronto in the Province of Ontario (hereinafter called "Imperial").

WHEREAS the Contractor has been engaged in diamond drilling in the Province of British Columbia;

AND WHEREAS Imperial now desires that the Contractor drill for it in the Mount Washington Area of the said Province of British Columbia and the Contractor is ready, able and willing to undertake such drilling.

NOW THEREFORE in consideration of the mutual covenants and agreements herein contained, it is agreed by and between the parties hereto as follows:

1. The Contractor agrees that on the 16th day of August, 1975, or thereabouts, it will commence the actual drilling with diamond drilling equipment at a location selected and staked by

Imperial in the Mount Washington Area of Vancouver Island in the Province of British Columbia.

2. Unless drilling shall be sooner discontinued at the direction of Imperial, the Contractor agrees to drill Three (3) holes with due diligence to an approximate total footage of 1,500 feet. Such operations shall be at the sole risk, cost and expense of the Contractor and in accordance with the terms hereof.

3. Imperial shall pay the Contractor as follows at a rate of Fifteen (\$15.00) Dollars per foot drilled:

- (a) Upon completion of Fifty (50%) percent of the work, a sum equal to Fifty (50%) percent of the total consideration within Thirty (30) days of receipt of invoice from Contractor.
- (b) The remaining consideration shall be paid upon completion of the work and within Thirty (30) days of receipt of invoice from Contractor.
- (c) For drilling below the 700 foot depth, Imperial shall pay an additional Dollars per foot drilled.
- (d) Contractor shall be paid a lump sum of Six Hundred (\$600.00) Dollars per move of the drill rig. This includes mobilization of equipment from base and return thereto. Imperial guarantees a minimum of Four (4) moves.

- (e) Provided finally that time lost as a result of the failure of the Contractor's equipment shall be at the Contractor's expense, provided that the work then being performed is the normal and usual drilling practice.

4. In connection with the drilling, only the following material, equipment and services shall be furnished or paid for by Imperial:

- (a) Surface rights, drilling permits, rights of entry and road to the location from the nearest travelled road.
- (b) Any special services specifically requested by Imperial not covered by this Agreement.
- (c) Helicopter as required.
- (d) Core boxes.

5. The Contractor agrees:

- (a) To do and perform any and all things necessary or incidental to the diligent drilling and completion of the hole not herein specifically provided to be done by Imperial.

- (b) To furnish all material, equipment and labour, other than that which Imperial herein agrees to furnish, necessary for the drilling of the hole to completion, including, but not limited to, erection on location of drilling rig capable of drilling to contract depth. All of such material shall be in good condition and working order.
- (c) To provide complete daily drilling reports, if requested by Imperial, and deliver them daily to Imperial's representative at Courtenay, British Columbia. Cores shall be caught, washed clean of mud dried and placed in boxes provided by Imperial, legibly marked as to hole and depth of such intervals and through such sections as designated by Imperial.
- (d) To conduct all operations hereunder in strict conformance with any statutes, governmental regulations or other provisions of law thereto applicable.
- (e) To core as directed by Imperial with approved bits.
- (f) To keep all information pertaining to the said holes and the drilling thereof from all but Imperial or its designated agent or agents, and to cause its own agents and employees to do likewise.

- (g) To furnish Imperial's representative at #314 - 1281 W. Georgia St., Vancouver, B.C. a complete statement of account for the drilling operations herein agreed upon. The Contractor shall pay promptly all bills for drilling equipment, labour, or other indebtedness involved in or arising out of the drilling and shall furnish releases evidencing such payments upon the request of Imperial or its authorized agent.
- (h) The Contractor shall indemnify and save Imperial harmless from any and all liens whatsoever arising out of the work performed by the Contractor hereunder.
- (i) To purchase and use Imperial's products in the performance of all operations under this Contract to the extent that such products are available.
- (j) Upon completion of the drilling program, the Contractor shall remove all rubbish and waste and shall rake, fertilize and seed the disturbed portions of the work area and leave the entire premises as near to its original state as is reasonably possible.

6. In the event Imperial shall desire at any time before the completion of the drilling to discontinue the project, Imperial shall give notice to the Contractor of its intention so to do, and thereupon the Contractor shall cease the further drilling and will be entitled to receive the price or sum per foot hereinbefore specified for each lineal foot in depth to which the hole shall have been drilled at the time of the receipt by it of the said notice; PROVIDED, however, that if the project is so discontinued before the holes have been drilled to a greater aggregate depth than 1,500 feet, Imperial agrees to pay Contractor a minimum footage price based on 1,500 feet of drilling.

7. The Contractor further covenants and agrees while this Agreement remains in force:

- (a) Without in any way limiting the liability of Contractor under this Contract, it shall be the responsibility of Contractor to maintain and keep in force during the term of this Contract automobile liability insurance on all vehicles used in connection with the work under this Contract. In respect of such vehicles not owned by Contractor, it shall maintain and keep in force as aforesaid non-

owned automobile liability insurance protecting its liability including that assumed under this Contract. The limits of such insurance shall be at least:

Bodily Injury (including Passenger Hazard) and Property Damage: \$1,000,000 inclusive any one accident.

- (b) Contractor shall deposit with Imperial upon request at the office from which the Contract is let, before commencement of the work, certificates satisfactory to Imperial as evidence of the insurance required above.
- (c) Imperial has in effect and shall keep in force a policy of insurance with respect to Contractor's liability to members of the public and property of the public (other than liability arising from the operation of licensed vehicles) with inclusive limits of \$1,000,000 any one occurrence in respect of bodily injury and property damage. With respect to damage to property, there is a deductible of \$2,000 each occurrence, for which loss Contractor shall be liable. For purpose of this insurance, Imperial is deemed to be a member of the public.

This insurance does not provide any protection for

- (a) loss to the work under the Contract prior to its acceptance by Imperial, for which loss Contractor shall be liable, or
- (b) damage to or destruction of or loss of use of property owned by or leased to Contractor other than property belonging to Imperial or for which Imperial may have assumed responsibility.
- (d) Imperial assumes no responsibility for the adequacy of the coverage under the policy referred to in clause (c) above. A Memorandum of Insurance setting out the terms and conditions of the policy will be made available to Contractor upon request.
- (e) Any insurance carried by Contractor the cost of which is chargeable to Imperial shall contain a waiver of subrogation in favour of Imperial and all other Contractors engaged in the work.
- (f) Subject to the other provisions of this Contract, Contractor shall provide at its own expense any other insurance which it is required by law to

provide or which Contractor or Imperial considers necessary.

- (g) To comply with the provisions of all laws or governmental regulations of the Province of British Columbia relating to safety and to Workmen's Compensation so far as applicable to the operations hereunder.
- (h) To take all necessary precautions against fire, and any fire due to the Contractor's negligence or faulty equipment will be the Contractor's sole responsibility.
- (i) The Contractor shall be liable for and shall indemnify and save harmless Imperial of and from all manner of actions, causes of action, proceedings, claims, demands, loss, costs, damages and expenses whatsoever which may be brought or made against Imperial, or which it may sustain, pay or incur as a result of or in connection with the performance, purported performance or non-performance of this Contract or of the work hereunder by the Contractor or his sub-contractors and whether the same result from or in connection with the use by the

Contractor or his sub-contractors of any machinery, tools or equipment belonging to Imperial, or from or in connection with the negligence or wilful acts or omissions of Imperial, its servants, agents, employees or its other contractors while acting under the direction or control of the Contractor or his sub-contractors, but excluding any such actions, causes of action, proceedings, claims, demands, loss, costs, damages and expenses to the extent that they are sustained, paid or incurred by reason of or are otherwise attributable to the negligence or wilful acts or omissions of Imperial, its servants, agents, employees or its other contractors while not acting under the direction or control of the Contractor or his sub-contractors, provided, however, that the liability of the Contractor hereunder in respect of loss or damage to property, including loss of use thereof, belonging to or in the custody of Imperial (other than the work, materials and equipment covered by this Contract prior to acceptance by Imperial) shall not exceed \$1,000,000 any one occurrence.

- (j) The Contractor shall promptly pay for all labour and materials and shall allow no liens to become filed against the property of Imperial.
- (k) In the event the Contractor shall fail or refuse to pay claims or indebtedness incurred by the Contractor, or his employees, agents or sub-contractors, in connection with the drilling of the hole herein contracted for, or any other hole or holes drilled by the Contractor for Imperial, Imperial shall have the right to pay said claims or indebtedness, or any of them, out of any money due or payable or to become due or payable to the Contractor by Imperial.

8. The Contractor shall not sublet or assign this Contract without the written consent of Imperial and, if sublet or assigned without such assent, the Contract, at Imperial's election, shall become void.

9. No change, modification or alteration of this Agreement shall be valid unless it be in writing, signed by the parties hereto, and no course of dealing between the parties shall be construed to alter the terms hereof.

10. It is further understood between the parties that no oral agreement or provision of this Contract shall be construed so as to constitute the Contractor the agent, servant or employee of Imperial, and the instruction, management and control of the Contractor's employees shall always remain in the Contractor and the Contractor shall be deemed to be an independent contractor.

IN WITNESS WHEREOF the parties hereto have duly executed this Agreement as of the day and year first above written.

INTERIOR DIAMOND DRILLING LTD.

Donald Mack
Stan Etter

IMPERIAL OIL LIMITED

Charles A. Chief
Margaret Jameson

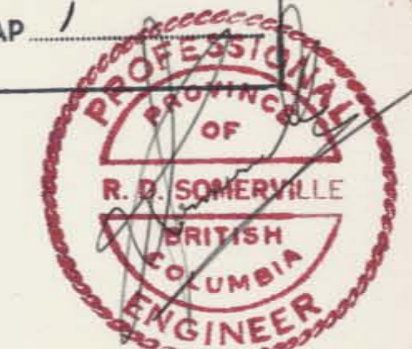


1975-1

1975-2

1975-3

Department of
 Mines and Petroleum Resources
 ASSESSMENT REPORT
 NO. 5604 MAP 1



NOTE:

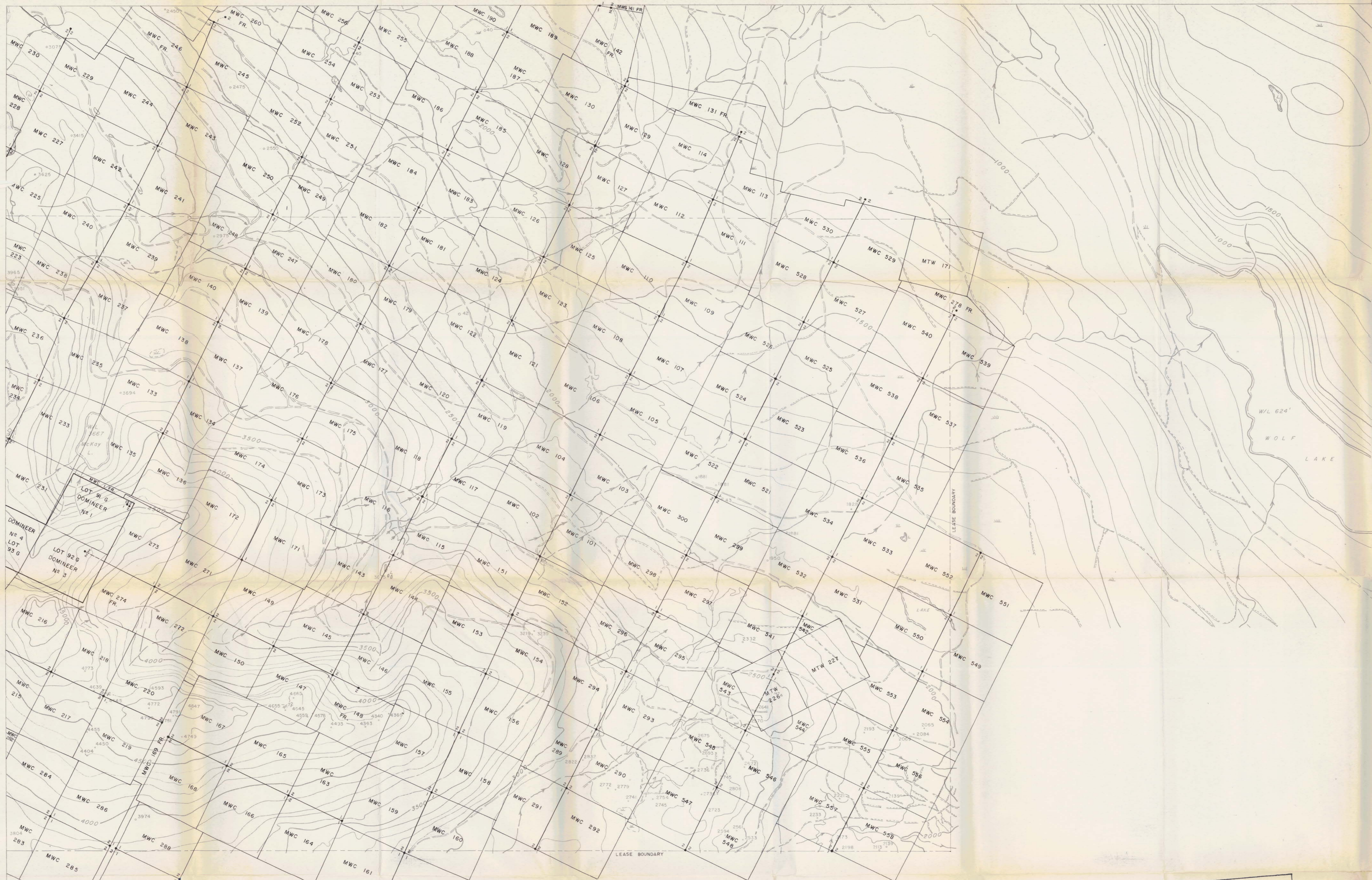
LOCATION POSTS ARE PLOTTED FROM STAKERS SKETCH AND IN SOME PLACES MAY DIFFER ON THE GROUND AS THAT SHOWN ON THIS MAP.
 LEASE BOUNDARY IS PLOTTED FROM THE AERIAL MAPPING CONTROL ESTABLISHED IN 1966.

By: ELHANNEY ASSOCIATES
 PROFESSIONAL LAND SURVEYORS
 1200 WEST PENDER STREET
 VANCOUVER 1, B.C.
 FILE: 03N1-1 DWG. 'D'

- GEOLOGICAL FEATURES**
- Drift-covered area
 - Rock outcrop, area of outcrop, floor
 - Geological boundary (defined, approximate interpreted)
 - Bedding, tops known (horizontal, inclined, vertical, over-turned, dip unknown)
 - Bedding, tops unknown (inclined, vertical, dip unknown)
 - Schistosity, gneissosity, cleavage, foliation (horizontal, inclined, vertical, dip unknown)
 - Lamination, axes of minor folds (horizontal, inclined, vertical)
 - Drag fold (arrow indicates plunge)
 - Fault (defined, approximate, interpreted)
 - Fault (defined, vertical)
 - Fault (defined, strike indicated downthrow side, arrows indicate relative movement)
 - Thrust fault (approximate, interpreted)
 - Shearing and slip
 - Joint (horizontal, inclined, vertical, dip unknown)
 - Syncline (defined, approximate)
 - Anticline (defined, approximate)
 - Anticline and syncline (overturned)
 - Intensity (weak, moderate, strong)

- CULTURE**
- Trench
 - Adit or tunnel
 - Rock dump or tailings
 - Quarry or mine
 - Shaft, raise, winze
 - Diamond-drill hole
- TOPOGRAPHY**
- Contours — 2000 — C.I.
 - Stream or creek (perennial, intermittent)
 - Marsh
 - Lake
 - Road
 - Jump Road
 - Trail

IMPERIAL OIL LIMITED - MINERALS SECTION
 Project No. 6023 Mining Division NANAIMO
 Longitude
 Latitude
 NTS 92 F.14 800 400 0 800
 SCALE FEET
 To Accompany A Report By: R. J. SOMERVILLE P.E.
 Date: 5/27/75
 Map No. 1
MT. WASHINGTON



Department of
Mines and Petroleum Resources
ASSESSMENT REPORT
No. 5604 MAP 2



NOTE:

LOCATION POSTS ARE PLOTTED FROM STAKERS SKETCH AND IN SOME PLACES MAY DIFFER ON THE GROUND AS THAT SHOWN ON THIS MAP.
LEASE BOUNDARY IS PLOTTED FROM THE AERIAL MAPPING CONTROL ESTABLISHED IN 1966.

- GEOLOGICAL FEATURES**
- Drift covered area
 - Rock outcrop, area of outcrop, float
 - Bedding, top known (horizontal, inclined, vertical, over turned, dip unknown)
 - Bedding, top unknown (inclined, vertical, dip unknown)
 - Schistosity, gneissosity, cleavage, foliation (horizontal, inclined, vertical, dip unknown)
 - Location, axes of minor folds (horizontal, inclined, vertical)
 - Drag fold (arrow indicates plunge)
 - Fault (defined, approximate, interpreted)
 - Fault (inclined, vertical)
 - Fault (fold circle indicated downthrow side, arrows indicate relative movement)
 - Thrust fault (approximate, interpreted)
 - Shearing and dip
 - Joint (horizontal, inclined, vertical, dip unknown)
 - Syncline (defined, approximate)
 - Anticline (defined, approximate)
 - Anticline and syncline (overturned)
 - Intensity (weak, moderate, strong)

- CULTURE**
- Trench
 - Add or tunnel
 - Rock dump or tailing
 - Quarry or mine
 - Shaft, raise, winze
 - Diamond-drill hole

- TOPOGRAPHY**
- Contour - 2000 C.I.
 - Stream or creek (Perennial, intermittent)
 - Marsh
 - Lake
 - Road
 - Jeep Road
 - Trail

IMPERIAL OIL LIMITED - MINERALS SECTION
Project No. 6023 Mining Division N.N.A.I.M.O.
Latitude _____ Longitude _____
NTS 92 F 14. 800 400 0 800
SCALE - FEET

Mc ELHANNAY ASSOCIATES
PROFESSIONAL LAND SURVEYORS
1200 WEST PENDER STREET
VANCOUVER 1, B.C.
FILE: 03741-1 DWG 'C'

To accompany A Report By R. S. SOREVILLE P.E.
Dated Sept. 14, 1975
Map No. 10
MT. WASHINGTON PROPERTY



GEOLOGICAL FEATURES

Drift-covered area:

Rock outcrop, area of outcrop, float:

Geological boundary (defined, approximate, interpreted):

Bedding, top known (horizontal, inclined, vertical, over turned, dip unknown):

Bedding, top unknown (inclined, vertical, dip unknown):

Schistosity, gneissosity, cleavage, foliation (horizontal, inclined, vertical, dip unknown):

Lineation, axes of minor folds (horizontal, inclined, vertical):

Dropfold (arrow indicates plunge):

Fault (defined, approximate, interpreted):

Fault (inclined, vertical):

Fault (fold circle indicated downthrow side, arrows indicate relative movement):

Thrust fault (approximate, interpreted):

Shearing and dip:

Joint (horizontal, inclined, vertical, dip unknown):

Syncline (defined, approximate):

Anticline (defined, approximate):

Anticline and syncline (overturned):

Intensity (weak, moderate, strong):

CULTURE

Trench:

Adit or tunnel:

Rock dump or taling:

Quarry or mine:

Shaft, raise, winze:

Diamond-drill hole:

TOPOGRAPHY

Contour:

Stream or creek (Perennial, intermittent):

Marsh:

Lake:

Road:

Jeep Road:

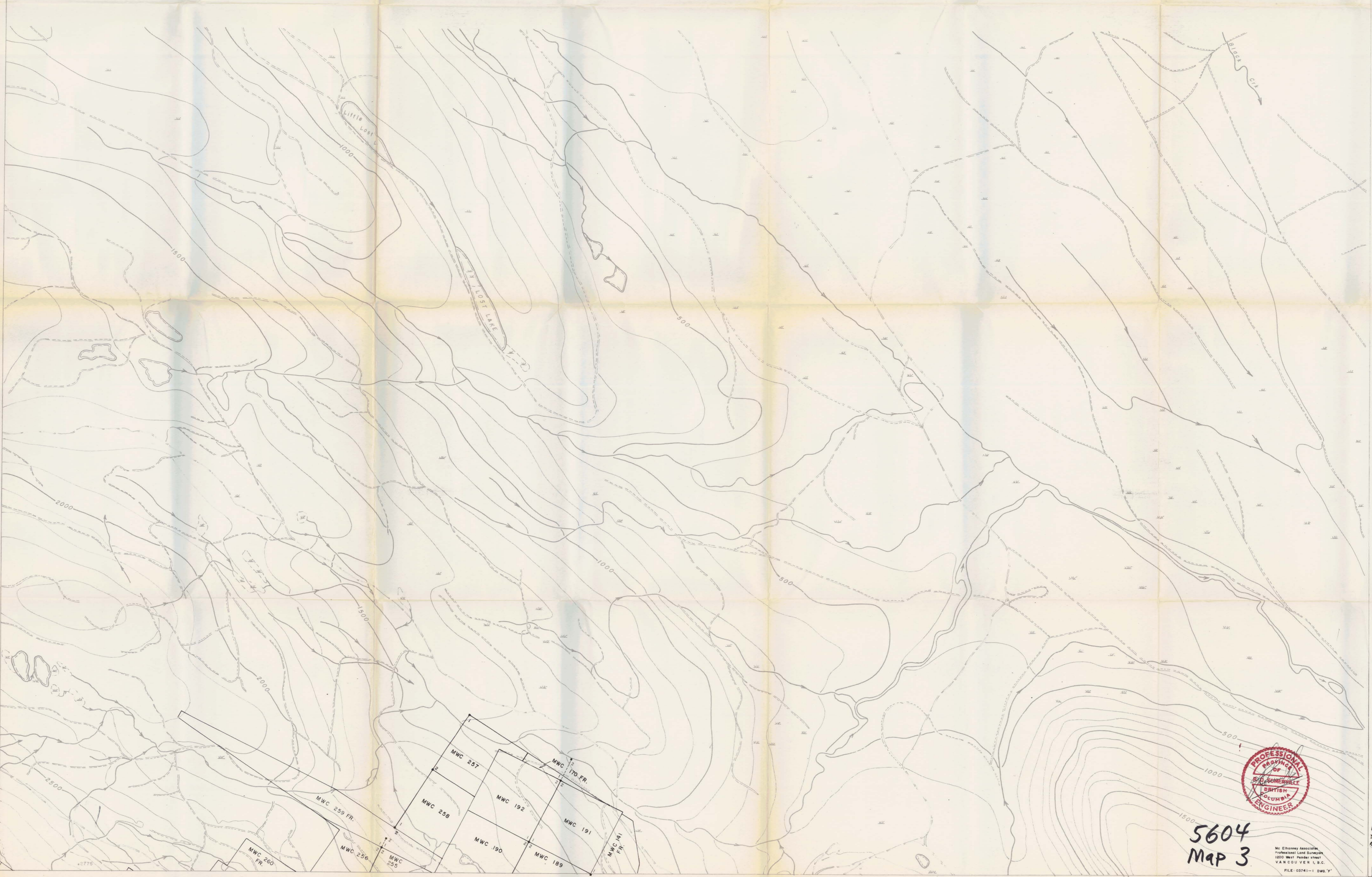
Trail:

IMPERIAL OIL LIMITED - MINERALS SECTION
Project No. 6023 Mining Division NANAIMO
Latitude _____ Longitude _____
NTS 92 F 14 800 400 0 800
SCALE FEET
To Accompany A Report By R. SORRELLA P. ENG
Date SEP 1975
Map No. 4
MT. WASHINGTON

5604
MAP 4



MVC 99
FR



GEOLOGICAL FEATURES

- Drift covered area
- Rock outcrop, area of outcrop, float
- Geological boundary (defined, approximate, interpreted)
- Bedding, top known (horizontal, inclined, vertical, over turned, dip unknown)
- Bedding, top unknown (inclined, vertical, dip unknown)
- Schistosity (pronounced, cleavage, foliation) (horizontal, inclined, vertical, dip unknown)
- Lamination, axes of minor folds (horizontal, inclined, vertical)
- Diapir (arrow indicates plunger)
- Fault (defined, approximate, interpreted)
- Fault (defined, vertical)
- Fault (solid circle indicated downthrow side, arrows indicate relative movement)
- Thrust fault (approximate, interpreted)
- Shearing and dip
- Joint (horizontal, inclined, vertical, dip unknown)
- Syncline (defined, approximate)
- Anticline (defined, approximate)
- Anticline and syncline (overturned)
- Intensity (weak, moderate, strong)

CULTURE

- Trench
- Add or tunnel
- Rock dump or tailing
- Quarry or mine
- Shaft, raise, winze
- Diamond-drill hole

TOPOGRAPHY

- Contours — 2500 — C.I.
- Stream or creek (Perennial, intermittent)
- Marsh
- Lake
- Road
- Loop Road
- Trail

IMPERIAL OIL LIMITED — MINERALS SECTION
Project No. 6023 Mining Division M.A.N.I.M.O.
Latitude _____ Longitude _____
NTS 92.F.14 SCALE- FEET
To accompany a Report by **R. B. BENEKIN P.E.**
Date: Sept 12/55
Map No.
MT. WASHINGTON PROPERTY



5604
MAP 3

McKENZIE ASSOCIATES
Professional Land Surveyors
1200 West Pender Street
VANCOUVER, B.C.
FILE 0341-1 DWG. "F"