

Department of
Mines and Petroleum Resources
ASSESSMENT REPORT

NO. 5653 MAP

5655

ASSESSMENT WORK REPORT

MONICA GROUP

NANAIMO MINING DIVISION

VANANDA, B. C.

IDEAL BASIC INDUSTRIES INC.



P. M. STILES

Department of
Mines and Petroleum Resources
ASSESSMENT REPORT

NO. 5655 MAP _____

SEPTEMBER 1975

TABLE OF CONTENTS:

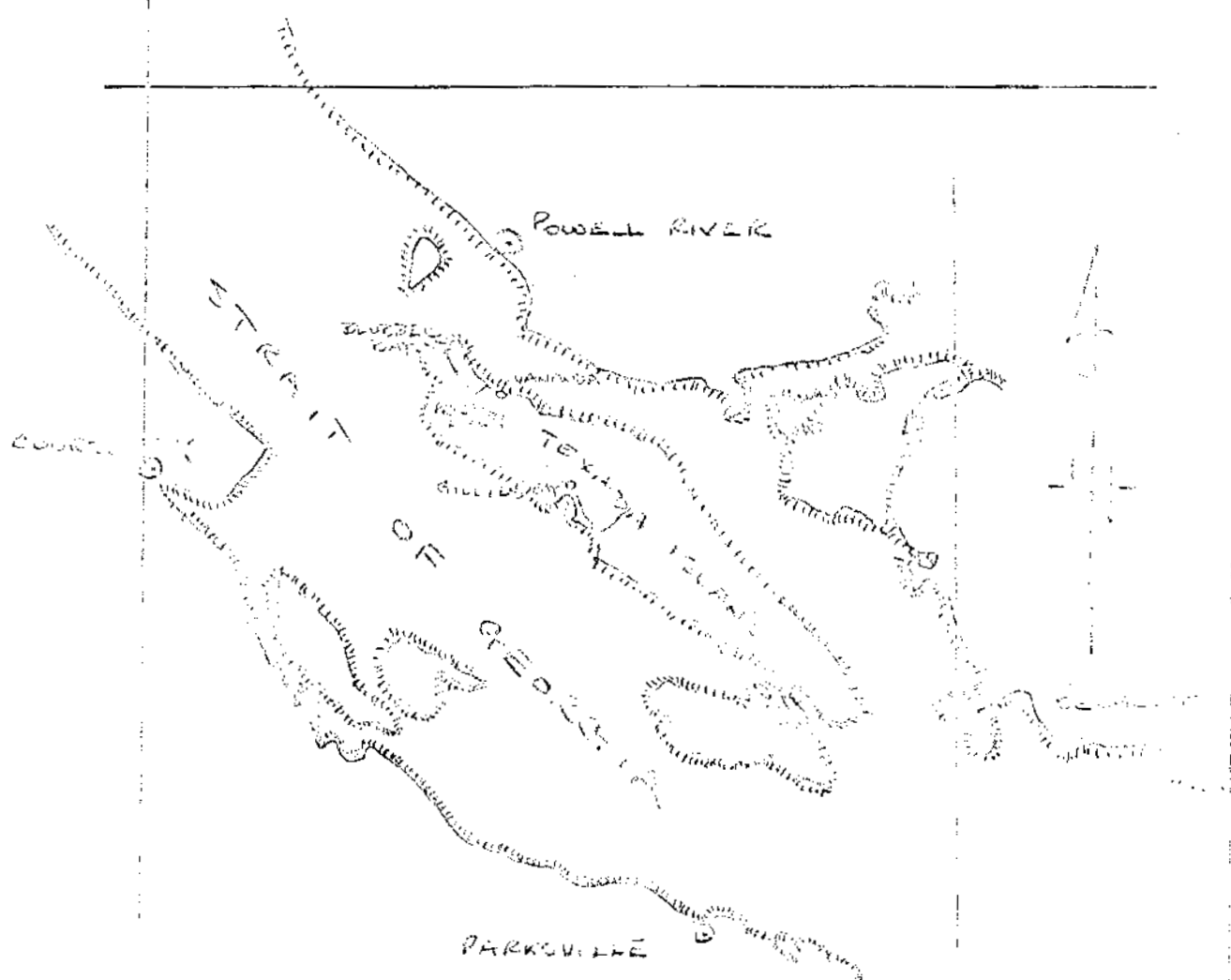
Introduction	Page 1
Description of Work	Page 4
Results	Page 5
Conclusions	Page 7

LIST OF ILLUSTRATIONS:

#1 Area Map	Page 2
#2 Monica Group	Page 3
#3 } ASSESSMENT DRILLING MAPS	
#4 }	

INTRODUCTION:

The Monica Group of 36 located mineral claims forms part of the holdings of Ideal Basic Industries Inc. of 610 - 1200 West Pender Street, Vancouver, B.C., on Texada Island. The group extends from the south shore of Priest Lake to the coast of Texada Island at Beale Cove. Access to Texada Island is by ferry from Powell River or by scheduled air line from Vancouver to a small landing strip near Gillies Bay.

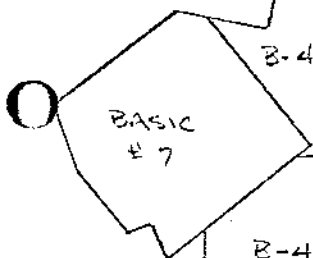
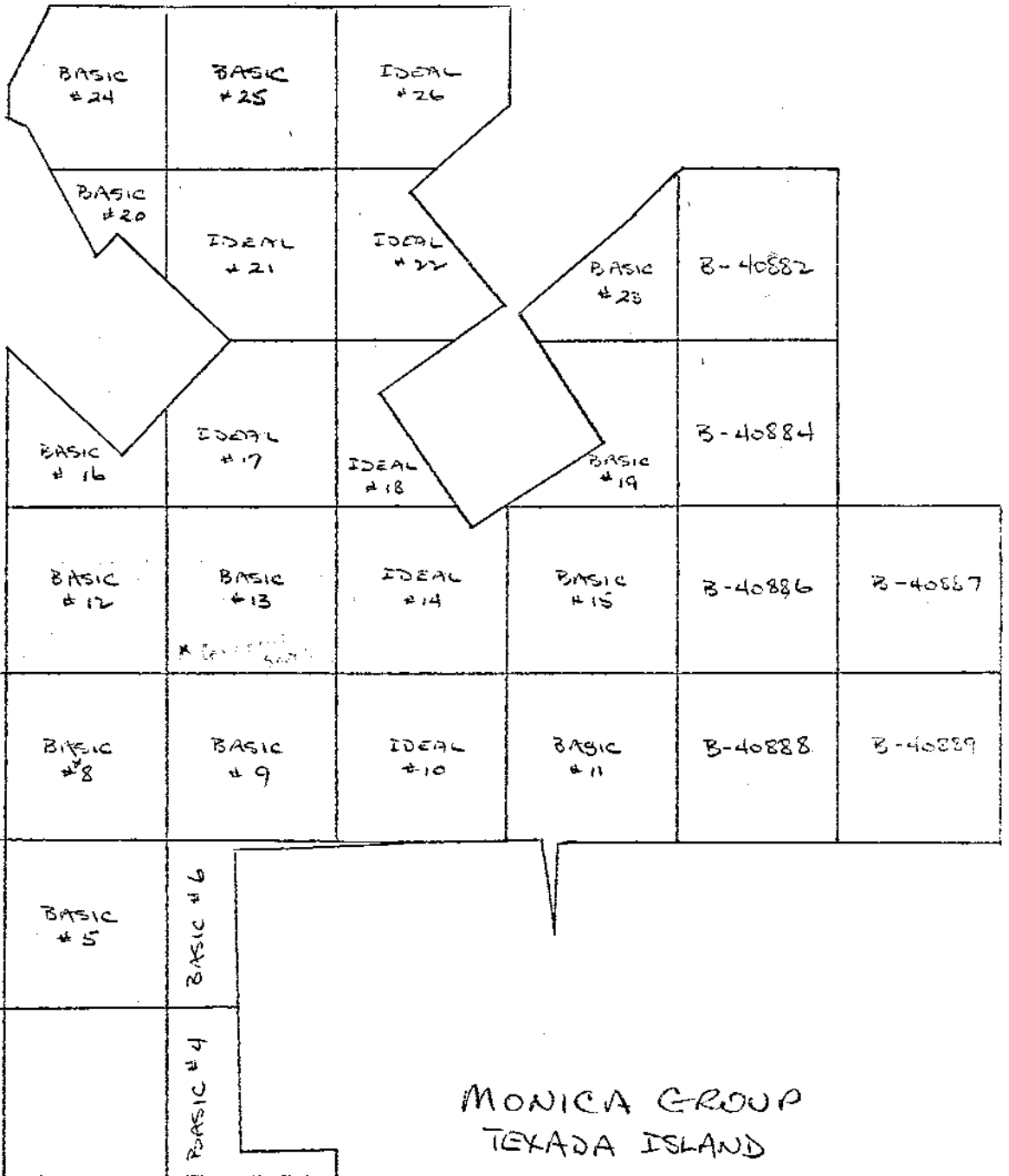
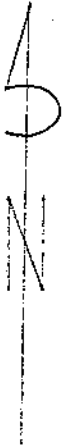


AREA MAP

TEXADA 1978-79

Department of Mines and Petroleum Resources ASSESSMENT REPORT	
NO. <u>3655</u>	MAP <u>1</u>

PRIEST LAKE

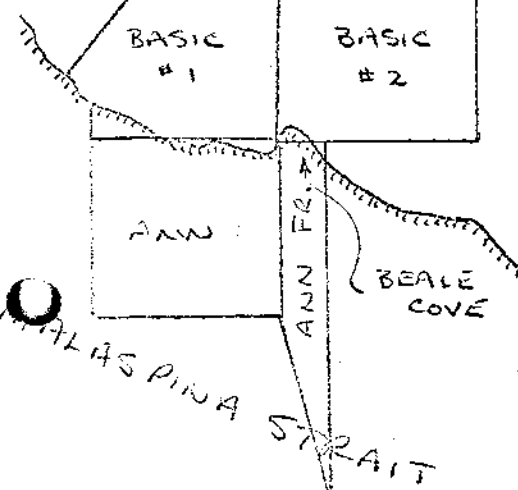


MONICA GROUP
TEXADA ISLAND

SCALE 1" = 1500'

Department of
Mines and Petroleum Resources
ASSESSMENT REPORT
NO. 5655 MAP 2

IDEAL BASIC INDUSTRIES
INC.





SCALE
1" = 500'

BASIC #16

IDEAL #17

BASIC #12

BASIC #13

HAUSAGE ROAD

L. 513

COMMODORE
MINE
SHAFT

L 246

N64°58'E
1500'

S55°02'E
587.0'

N25°02'W
884.9'

S39°46'E
921.5'

N81°35'W

N81°36'W
723.7'

58.95'

N89°44'30"E
446.68'

S89°51'40"E
273.60'

N89°57'20"E
561.23'

B40900

VOLCANIC
LIMESTONE
BASIC #8

BASIC #9

L. 25

N02°39'30"E
2316.86'

N0°08'40"W
1295.47'

B41068

BASIC #5

BASIC #6

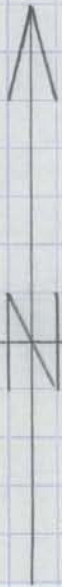
LIMESTONE
VOLCANIC

S87°57'20"E
228'

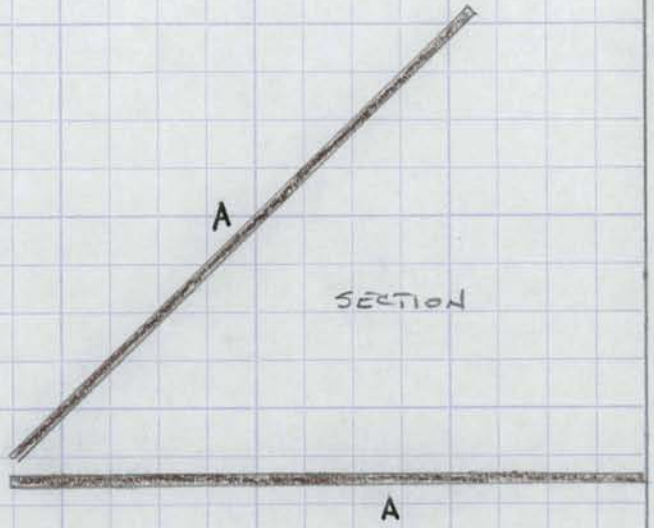
5655 M-3

BASIC #3

EAGLE

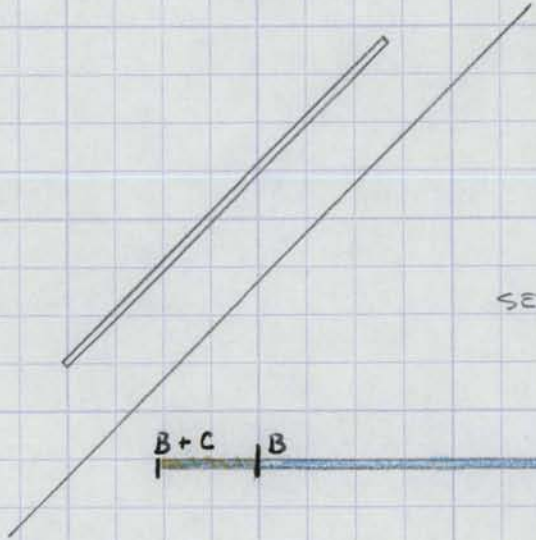


2
1 0



BASIC # 13

SCALE 1" = 30'



- A VOLCANIC
- B LIMESTONE
- C SULPHIDE

BASIC # 8

ASSESSMENT DRILLING
MONIKA GROUD

Department of
 Mines and Petroleum Resources
 ASSESSMENT REPORT
 MAP 4
 2222
 NO.

DESCRIPTION OF WORK:

All work consisted of diamond drilling. A program of drilling was proposed covering three areas of interest on mineral claims, Basic 13, Basic 8 and Basic 1 in the Monica Group. This report covers drilling on Basic 13 and part of that work done on Basic 8. Another report will cover the remainder of the work when completed.

The drilling was carried out using a Hydra-Push portable diamond drill using XRP bits yielding 7/8" core.

1964
1965
1966
1967
1968
1969
1970
1971
1972
1973
1974
1975
1976
1977
1978
1979
1980
1981
1982
1983
1984
1985
1986
1987
1988
1989
1990
1991
1992
1993
1994
1995
1996
1997
1998
1999
2000
2001
2002
2003
2004
2005
2006
2007
2008
2009
2010
2011
2012
2013
2014
2015
2016
2017
2018
2019
2020
2021
2022
2023
2024
2025

RESULTS:

a) Basic 13 M.C.

Two holes were drilled on Basic 13 M.C. near the workings of the old Commodore Mine. The holes were spotted approximately fifty feet north of the Commodore shaft. One was drilled vertically and one dipped at 45 degrees to the north. Both holes were drilled to 100 feet and both were entirely in a dark diorite for their entire length.

This dioritic rock has been identified in other mineralized areas on the Island and has been further described by R. G. McConnell in Memoir 58 of the Canada Department of Mines Geological Survey 1914.

b) Basic 8 M.C.

A sulphide mineralized area of limestone was encountered during the quarrying of limestone on Lot 25 of Texada Island. This area is also covered by the Basic 8 M.C. The zone is exposed for a length of about 180 feet on an east - west face approximately forty feet high. It is bounded on the west by a narrow north

westerly trending vertical dyke. There is no apparent structural eastern boundary. The vertical jointing in the limestone trends parallel to the dyke boundary. The mineralization occurs as fracture filling. In places the host limestone appears brecciated and has been completely surrounded by the sulphides. The sulphides are largely pyrite with very minor amounts of chalcopyrite being visible.

Holes were spotted to test this zone for persistence at depth and for extent horizontally. One 100 foot hole was drilled at -45 degrees fifty feet from the dyke. No intersection was made with the dyke. The sulphide mineralization was encountered from the collar for only fifteen feet. Three more holes are proposed in this area and will be reported on later.

CONCLUSIONS:

a) Basic 13 M.C.

The absence of any metallic mineralization in the drill cores discourages any further drilling in this area at present. This does not rule out possibilities that may show up with a detailed surface geological study in the future.

b) Basic 8 M.C.

The one hole considered in this report intersected only fifteen feet of mineralization. Although not conclusive, the indications are that the zone probably does not extend to depth. Further drilling planned in this area will prove or disprove this conclusion.