

# 5658

DIAMOND DRILLING REPORT

PROPERTY

92I/7 RL Groups  
Rey Lake Area  
Nicola M.D.

Cost

DDH RL 75-25, 310' overburden at \$12/ft -----\$3720  
421' core drilling at \$10/ft --- 4210  
731'  
Lost, 60' BW casing at \$5.94/ft- 356  
Total \$8286

DDH RL 75-26, 444' overburden at \$12/ft -----\$5328  
13' core drilling at \$10/ft --- 130  
Total \$5458

Contractor, H. Allen Diamond Drilling Ltd.  
Box 1397,  
MERRITT, B.C.

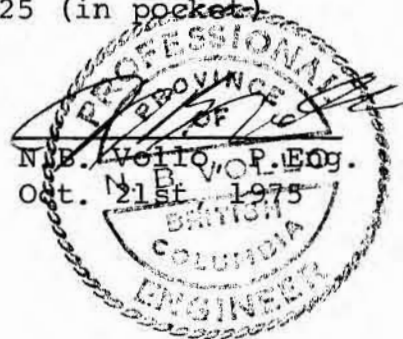
Invoice attached.

Core Storage

On property, see map, 1"=200' in pocket.

Enc.

Drill logs, holes RL 75-25 and 26  
Location Map, 1"=400', RL 75-26  
" " , 1"=200', RL 75-25 (in pocket)  
" , 1:50,000



Department of  
Mines and Petroleum Resources  
ASSESSMENT REPORT  
NO. 5658 MAP.....

H. ALLEN DIAMOND DRILLING LTD.

TELEPHONE 378-4494

P.O. BOX 1397  
MERRITT, B.C.

Invoice No. 189.

June 2, 1975.

To: Craigmont Mines Ltd.,  
Suite 270,  
180 Seymour Street,  
Kamloops, B.C.

In Account With:

H. Allen Diamond Drilling Ltd.,  
Box 1397,  
Merritt, B.C.

This invoice is for diamond drilling at Rey Lake, B.C.

Hole No. 75-24 core drilling from 452 ft. to 627 ft. - 175 ft. @ \$10.00 per ft.....	\$ 1,750.00
Casing non-recoverable from Hole No. 75-24.	
5 pieces 10 ft. B.W. @ \$59.40 each.....	\$ 297.00
1 B.W. casing shoe @ \$141.52.....	\$ 141.52
-----	
Hole No. 75-25 overburden from 0 to 310 ft. - 310 ft. @ \$12.00 per ft.....	\$ 3,720.00
Hole No. 75-25 core drilling from 310 ft. to 731 ft. - 421 ft. @ \$10.00 per ft.....	\$ 4,210.00
Casing non-recoverable from Hole No. 75-25.	
6 pieces 10 ft. B.W. casing @ \$59.40 each.....	\$ 356.40
2 " 5 ft. B.W. casing @ \$33.00 each.....	\$ 66.00
1 B.W. casing shoe @ \$141.52 each.....	\$ 141.52
-----	
Hole No. 75-26 overburden from 0 to 444 ft. - 444 ft. @ \$12.00 per ft.....	\$ 5,328.00
Hole No. 75-26 core drilling from 444 ft. to 457 ft. - 13 ft. @ \$10.00 per ft.....	\$ 130.00
-----	
Hole No. 75-27 overburden from 0 to 240 ft. - 240 ft. @ \$12.00 per ft.....	\$ 2,880.00
Hole No. 75-27 core drilling from 240 ft. to 348 ft. - 108 ft. @ \$10.00 per ft.....	\$ 1,080.00
Casing non-recoverable from Hole No. 75-27.	
2 - pieces 10 ft. B.W. casing @ \$59.40 each.....	\$ 118.80
1 B.W. casing shoe @ \$141.52 each.....	\$ 141.52

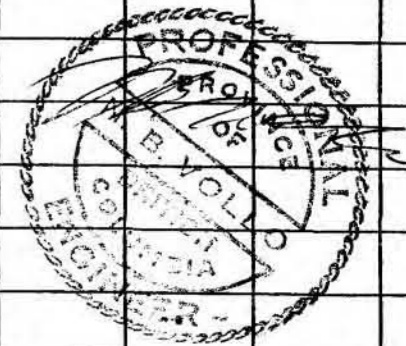
# DIAMOND DRILL CORE LOG - SAMPLE RECORD

DEPTH	DIP	BEARING AST.
COLLAR	-55°	225°
400'	-55°	--
700'	-57°	--

PROPERTY ..... 92I/7 Rey Lake ..... CLAIM Rey 211  
 LATITUDE ..... STARTED April 25th, 1975  
 DEPARTURE ..... FINISHED May 2nd, 1975  
 ELEVATION 4460' approx. .... TOTAL LENGTH 731'

LOGGED BY N.B. Vollo  
 CORE SIZE BQ  
 SECTION 74+00NW  
 ..... 16+00NE  
 HOLE NO. RL 75-25

Footage	DESCRIPTION	MINERALIZATION	Sample	From	To	Length	Copper %	Mo %	Gold Oz.	Silver Oz.
0	Casing - overburden.									
311	Quartz Monzonite Porphyry Grey, coarse grained, with crowded white plag. phenos in a grey matrix. Quite fresh, though highly fractured and broken.	Sparse py cp								
342	Felsite Dike - Grey green, medium grained with no mafics. Moderately sericitized with some plag. phenos completely alt.	2% py, sparse cp								
373	Feldspar Porphyry Dike - scattered white plag. phenos to 10mm in a dark grey matrix. Strongly fractured, with core badly broken. Crushed core, possible fault to	sparse py cp								
400	Felsite - Grey green, medium grained, mod. sericitized. Possibly a highly alt QMP. Sharp change in broken core to	2% py								
E-700										









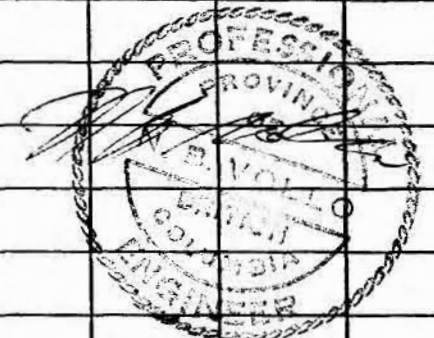
# DIAMOND DRILL CORE LOG - SAMPLE RECORD

DEPTH	DIP	BEARING AST.
COLLAR	-55°	225°

PROPERTY ..... 921/7 Rey Lake ..... CLAIM RL-14 .....  
 LATITUDE ..... STARTED April 25th, 1975 .....  
 DEPARTURE ..... FINISHED May 2nd, 1975 .....  
 ELEVATION ..... 4480' Approx. .... TOTAL LENGTH ..... 731' .....

LOGGED BY N. B. Vollo .....  
 CORE SIZE BQ .....  
 SECTION 98+00NW .....  
                   16+00NE .....  
 HOLE NO. RL 75-26 .....

Footage	DESCRIPTION	MINERALIZATION	Sample	From	To	Length	Copper %	Mo %	Gold Oz.	Silver Oz.
0	Casing - Overburden. Strong water flow at about 400'									
446	Andesite - Green, fairly massive, medium grained, possibly a fine fragmental. A few quartz-carbonate stringers with a little pyrite.	3-5% py, cp on fractures and in quartz stringers. No vis. Mo	1526	444	457	13	0.14	<.005		
457	END									
NOTE:	Casing could be set only to 400'. Core obtained by running rods ahead of casing for one run.									





CRAIGMONT MINES LIMITED

921/7 RL GROUP

LOCATION MAP

1:50,000

Oct. 21st, 1975 N.V.

Department of  
Mines and Petroleum Resources  
ASSESSMENT REPORT

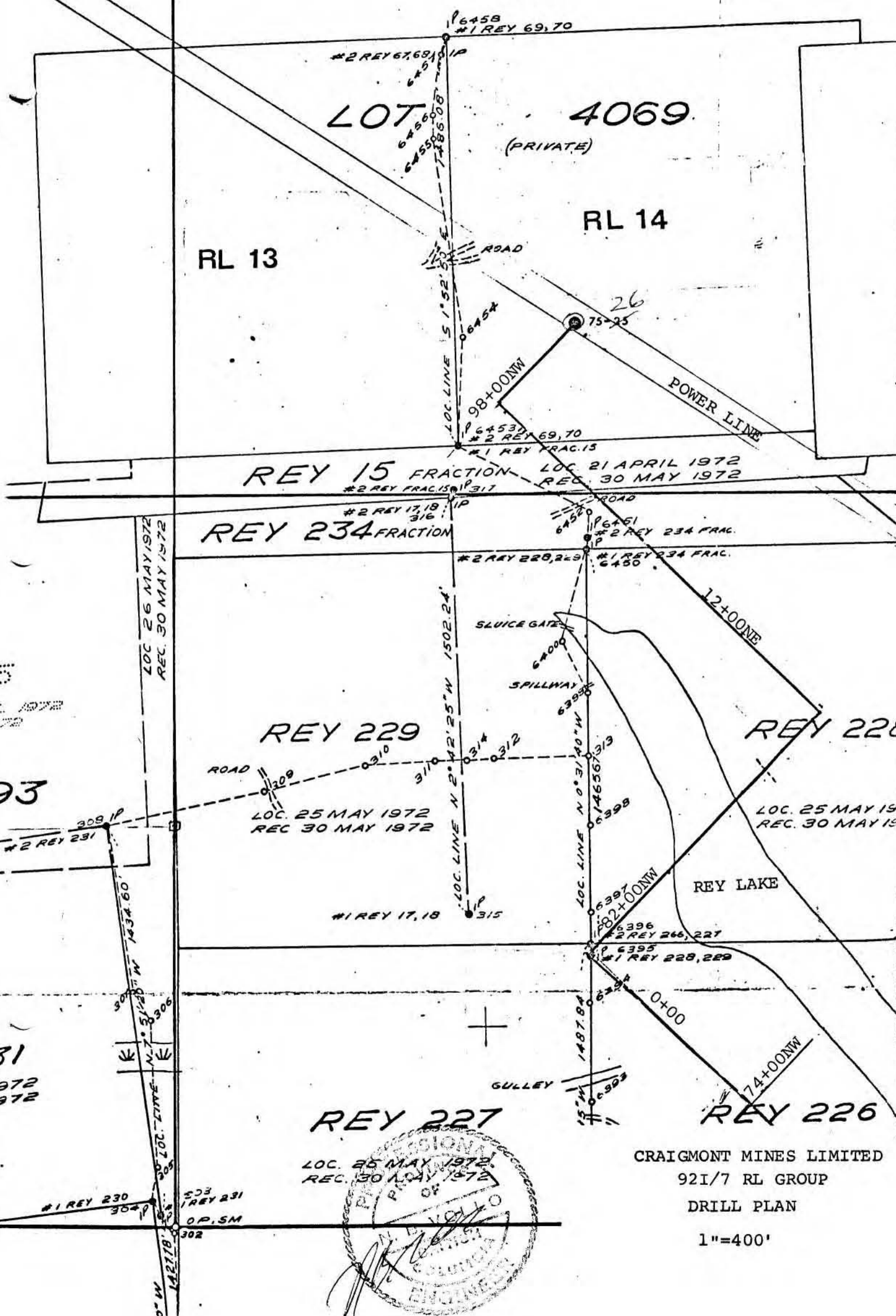
NO. 5658 MAP 1



# 5658 M-2

NICOLA

15,000



LOT 4069 (PRIVATE)

RL 13

RL 14

REY 15 FRACTION LOC. 21 APRIL 1972 REC. 30 MAY 1972

REY 234 FRACTION

REY 229

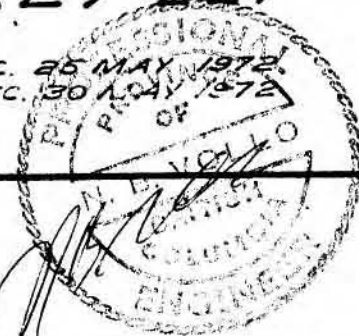
REY 228

REY 227

REY 226

CRAIGMONT MINES LIMITED  
921/7 RL GROUP  
DRILL PLAN

1"=400'







**LOCATION MAP**  
 Scale 1" = 20 miles

**LEGEND**

- Road
- - - Trench
- Claim post, location known, assumed
- △ Survey marker
- Drill hole, Diamond, Percussion, prop.

Department of  
 Mines and Petroleum Resources  
 ASSESSMENT REPORT  
 NO. 5658 MAP 3

**CRAIGMONT MINES LIMITED**  
 KAMLOOPS, B.C.

**921/7 RL GROUP**  
**GEOLOGICAL MAP**

Scale: 1" = 200' Date: \_\_\_\_\_  
 Drawn by: \_\_\_\_\_

5658 M-3





**LOCATION MAP**  
 Scale 1" = 20 miles

**LEGEND**

- Road
- - - Trench
- Drill hole, Diamond, Percussion, prop.
- Claim post, location known, assumed
- △ Survey marker

Department of  
 Mines and Petroleum Resources  
 ASSESSMENT REPORT  
 NO. 5658 MAP 3

**CRAIGMONT MINES LIMITED**  
 KAMLOOPS, B.C.

**921/7 RL GROUP**  
**GEOLOGICAL MAP**

Scale: 1" = 200' Date: \_\_\_\_\_  
 Drawn by: \_\_\_\_\_