

5689

CLAIMS: NICOLAS DICKENS FR.  
COMINCO LTD.  
H.B. MINE, SALMO, B.C.  
ASSESSMENT REPORT 1975  
82F/3E

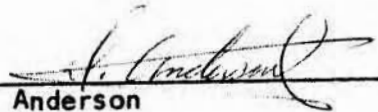
5689

COMINCO LTD.  
H.B. MINE - SALMO, B.C.

Drill Holes completed and paid for by November 12, 1975:

Core to be stored at the 2800 level core shed at the H.B. Mine, Salmo, B.C.

| <u>Hole Number</u> | <u>Azimuth</u> | <u>Inclination</u> | <u>Core Diameter</u> | <u>Elevation</u> |
|--------------------|----------------|--------------------|----------------------|------------------|
| S 306              | 270°           | - 60°              | AQ                   | 3,500'           |
| S 307              | -              | - 90°              | "                    | "                |
| S 308              | 270°           | - 70°              | "                    | "                |
| S 309              | -              | - 90°              | "                    | "                |

  
D. Anderson  
Geologist

DA:mfl  
November 7, 1975

cc: HGB  
RW  
MJM



Department of  
Mines and Petroleum Resources  
ASSESSMENT REPORT  
NO. 5689 MAP


COMINCO LTD.  
H.B. MINE - SALMO, B.C.

Itemized Cost Statement for Diamond Drilling 1975 done on the Dickens Fraction and the Nicolas Mining Claim.

The diamond drilling costs incurred to drill the four holes on three locations are specified below. The drill holes are listed with their corresponding lengths of casing and coring footage. Please refer to contract drill charges as substantiated on invoices from Logan Diamond Drilling Company Limited which are included at the back of this report. I have underlined the applicable costs related to this drilling program. (on invoices 1 and 2)

| <u>Number</u>    | <u>Angle</u> | <u>Overburden<br/>(Casing)</u>               | <u>Cost of Casing<br/>at \$7.50/ft.</u> | <u>Footage<br/>Cored</u> | <u>Cost at<br/>\$5.65/ft.</u> |
|------------------|--------------|--|---|--------------------------|-------------------------------|
| S 306            | -60°         | 0' - 18'                                     | \$ 135.00                               | 18' - 174'               | \$ 881.40                     |
| S 307            | -90°         | 0' - 103'                                    | \$ 772.50                               | 103' - 293'              | \$1,073.50                    |
| S 308            | -70°         | 0' - 112'                                    | \$ 840.00                               | 112' - 298'              | \$1,050.90                    |
| S 309            | -90°         | 0' - 99'                                     | \$ 742.50                               | 99' - 212'               | \$ 638.45                     |
| S 306<br>(Reset) | -60°         | Casing cost under<br>manhours, mud<br>etc. = | \$1,706.25                              | 174' - 396'              | \$1,254.30                    |
|                  |              | Sub-total =                                  | \$4,196.25                              | Sub-total =              | \$4,898.55                    |
|                  |              |  |   |                          | \$4,196.25                    |
|                  |              |  |   |                          | <u>\$ 525.00</u>              |
|                  |              |  |   | Minimum Cost =           | \$9,619.80                    |

Underlined extra charges are for moving between sites =  
(invoice number 1)


---

D. Anderson  
Geologist

DA:mf1  
November 7, 1975



# Diamond Drill Sampling Record

|           |               |           |          |       |          |          |
|-----------|---------------|-----------|----------|-------|----------|----------|
| Hole No.  | S 306         | Sheet     | 1        | Lat.  |          | Hor. Cor |
| Property  | H.B. Mine     | Length    | 396'     | Dep.  |          | Etch. at |
| District  | Nelson        | Bearing   | N 90° W. | Elev. | 3500 ASL | True Dip |
| Commenced |               | Dip       | -60°     |       |          | Location |
| Completed | October, 1975 | Objective |          |       |          |          |

| Footage |       | Description  | Shorts<br>Feet |
|---------|-------|--|----------------|
| From    | To    |  |                |
| 0'      | 17'   | Casing in overburden.  |                |
| 17'     | 36'   | Reeves Limestone. A white, massive limestone. Medium to coarse crystalline.  |                |
| 36'     | 75'   | Reeves Dolomitic limestone. Grey and white banded limestone. Fine to medium crystalline. Banding at 70° to c.a. 58' - 75' Only 4.5 feet recovered.   |                |
| 75'     | 88.5' | Dyke green, mafic dyke. Included from 80' - 85' is white, coarsely crystalline limestone.  |                |
| 88.5'   | 174'  | Reeves Dolomitic limestone. Grey and white, massive then at 104' into banded until 126' when limestone becomes white, massive unit. From 148' - 174' only 4.5 feet recovered. Some oxide coating on limestone. |                |
| 174'    | 223'  | Truman argillite limey, dark brown argillite.  |                |
| 223'    | 396'  | Truman limestone. Grey-white, medium crystalline limestone with argillaceous bands to 15% of total.  |                |

# Diamond Drill Sampling Record

|           |               |           |       |       |      |          |
|-----------|---------------|-----------|-------|-------|------|----------|
| Hole No.  | S 307         | Sheet     | 1     | Lat.  |      | Hor. Cor |
| Property  | H.B. Mine     | Length    | 293'  | Dep.  |      | Etch. at |
| District  | Nelson        | Bearing   | -     | Elev. | 3500 | True Dip |
| Commenced |               | Dip       | - 90° |       |      | Location |
| Completed | October, 1975 | Objective |       |       |      |          |

*H. Anderson*

| Footage |       | Description   | Shorts<br>Feet |
|---------|-------|---|----------------|
| From    | To    |   |                |
| 0'      | 20'   | Casing in overburden.   |                |
| 20'     | 47'   | Reeves limestone. Grey-white, massive limestone which is dolomitic in part.                                 |                |
| 47'     | 86.5' | Reeves limestone. Grey and white banded limestone with minor dolomite.                                      |                |
| 86.5'   | 96'   | Reeves limestone. White, massive, coarsely crystalline unit.  |                |
| 96'     | 116'  | Dyke Oxidized, mafic dyke.  |                |
| 116'    | 146'  | Reeves dolomitic limestone. Grey and white banded limestone. Some broken zones filled with gravel material. |                |
| 146'    | 156'  | Reeves limestone. White, massive with gravel in some small cavities.  |                |
| 156'    | 172'  | Felsite dyke. White with spotting (dendritic) which is probably a feeder from intrusive below.              |                |
| 172'    | 212'  | Truman argillite. Altered green and brown skarny - argillite which is silicified in part.                   |                |
| 212'    | 220'  | Felsite dyke. Same as above. Border phase.  |                |
| 220'    | 293'  | Granite. Medium-grained, leucocratic granite.   |                |

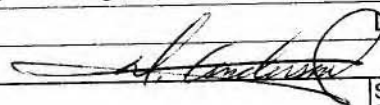
# Diamond Drill Sampling Record

|           |               |           |          |       |      |          |
|-----------|---------------|-----------|----------|-------|------|----------|
| Hole No.  | S 308         | Sheet     | 1        | Lat.  |      | Hor. Cor |
| Property  | H.B. Mine     | Length    | 293'     | Dep.  |      | Etch. at |
| District  | Nelson        | Bearing   | N 90° W. | Elev. | 3500 | True Dip |
| Commenced |               | Dip       | -70°     |       |      | Location |
| Completed | October, 1975 | Objective |          |       |      |          |

| Footage |        | Description  | Shorts<br>Feet |
|---------|--------|--|----------------|
| From    | To     |  |                |
| 0'      | 19'    | Casing in overburden.  |                |
| 19'     | 30'    | Truman argillite - Dark brown, silicified and partly limey argillite.  |                |
| 30'     | 44'    | Truman limestone and argillite - White limestone with brown and green skarny argillite.                          |                |
| 44'     | 62'    | Truman argillite - Altered grey-brown argillite.   |                |
| 62'     | 98'    | Truman limestone - light grey then darker limestone with argillaceous wisps and bands. 85' - 88' Argillite.      |                |
| 98'     | 122.5' | Truman argillite - Green colored argillite becoming dark brown by 100'.  |                |
| 122.5'  | 134'   | Truman limestone - Medium grey with argillaceous beds.   |                |
| 134'    | 171'   | Truman argillite - Dark brown, silicified argillite.   |                |
| 171'    | 218'   | Truman limestone and skarn - Orange and green, altered. Skarnified argillite in limestone.                       |                |
| 218'    | 237'   | Truman argillite - Skarnified. Last 5' green altered argillite.  |                |
| 237'    | 243.5' | Mixed transition zone - Reeves crackle dolomite, limestone, and argillaceous bands.                              |                |
| 243.5'  | 293' E | Reeves Crackle dolomite - Light grey matrix with carbonaceous material. Oxide stain throughout 50'. No sulfides. |                |

# Diamond Drill Sampling Record

|           |               |           |      |       |      |          |
|-----------|---------------|-----------|------|-------|------|----------|
| Hole No.  | S 309         | Sheet     | 1    | Lat.  |      | Hor. Cor |
| Property  | H. B. Mine    | Length    | 212' | Dep.  |      | Etch. at |
| District  | Nelson        | Bearing   | -    | Elev. | 3500 | True Dip |
| Commenced |               | Dip       | -90° |       |      | Location |
| Completed | October, 1975 | Objective |      |       |      |          |



| Footage |        | Description  | Shorts<br>Feet |
|---------|--------|--|----------------|
| From    | To     |  |                |
| 0'      | 15'    | Casing in overburden.  |                |
| 15'     | 39.5'  | Truman argillite - Dark brown and green, siliceous argillite. "Leopard" texture. Very little lime.                                       |                |
| 39.5'   | 85'    | Truman argillite - Skarnified, green and brown argillite. No limestone remains. 73' - 85' Skarn again but limey now.                     |                |
| 85'     | 98'    | Truman limestone - grey, medium crystalline limestone with argillite beds within it.   |                |
| 98'     | 108'   | Truman argillite - green and orangey-brown skarn.  |                |
| 108'    | 185'   | Truman argillite - dark brown, biotite spotted argillite with a pale, greenish-white equivalent. (bleached)<br>Bedding at 10-15° to c.a. |                |
| 185'    | 212' E | Truman argillite and limestone - orangey-brown and green skarn with limestone. Bedding at 10-30° to c.a.                                 |                |





# LOGAN DIAMOND DRILLING CO. LTD.

~~DEKSON LAKE, BOHEMIA, ONTARIO~~  
Box 10, Salmo, B.C. V0G 1S6

October 31, 1975.

Purchase Order No. 1862R.

## FOOTAGE DRILLED (SURFACE) IN OCTOBER 1975 A.Q. Core, H.B. Mine.

| <u>HOLE NO.</u>    | <u>DEGREE</u> | <u>OVERBURDEN</u> | <u>START</u> | <u>FINISH</u> | <u>FOOTAGE DRILLED</u> |
|--------------------|---------------|-------------------|--------------|---------------|------------------------|
| S-308              | -70           |                   | 270 feet     | 298 feet      | 28 feet                |
| S-309              | -90           | 99 feet           | 99 "         | 212 "         | 113 "                  |
| S-306 <i>Reset</i> | -60           | 0 "               | 174 "        | 396 "         | 222 "                  |
| S-215              | -85           | 0 "               | 0 "          | 141 "         | 141 "                  |
| S-216              | -30           | 0 "               | 0 "          | 100 "         | 100 "                  |
|                    |               | <u>99 feet</u>    |              |               | <u>604 feet</u>        |

### EXTRA CHARGES

| <u>DATE</u> | <u>MAN HRS</u> | <u>TRUCK HRS.</u> | <u>DRILL MUD</u> | <u>CASING</u>   | <u>DIAMONDS</u>                           |
|-------------|----------------|-------------------|------------------|-----------------|---|
| Oct. 4      | 8 hrs.         | -                 | 4 bags           | -               | -   |
| " .6        | 16 "           | -                 | 3 "              | 110 ft.         | 1 A.X. Shoe                               |
| " .8        | 10 "           | -                 | 7 "              | -               | -   |
| " .9        | -              | -                 | 3 "              | -               | -   |
| " .10       | 12 "           | -                 | 4 "              | -               | -   |
| " .14       | 8 "            | -                 | 4 "              | -               | 1 A.X. Shoe                               |
| " .17       | 2 "            | 2 hrs.            | -                | -               | 1-B.X. Shoe                               |
| " .20       | 24 "           | -                 | -                | -               | 1 A.X. Shoe                               |
| " .21       | 24 "           | -                 | -                | -               | -   |
| " .22       | 24 "           | -                 | -                | -               | -   |
| " .23       | 16 "           | -                 | -                | -               | -   |
|             | <u>144 hrs</u> | <u>2 hrs.</u>     | <u>25 bags</u>   | <u>110 feet</u> | <u>4 A.X. Shoes</u><br><u>1 B.X. Shoe</u> |

SUMMARY  
ON ATTACHED SHEET

SUMMARY

|                            |           |                 |
|----------------------------|-----------|-----------------|
| 604 feet A.Q.Core drilling | @ 5.65    | = 3,412.60      |
| 99 " Overburden            | @ 7.50    | = 742.50        |
| 144 man hrs.               | @ 7.50    | = 1,080.00      |
| 2 truck hrs.               | @ 7.50    | = 15.00         |
| 25 bags drill mud          | @ 5.85    | = 146.25        |
| 110 ft.A.X.Casing, 50%used | no charge |                 |
| 4 A.X.Casing shoes         | @ 83.30   | = 333.20        |
| 1 B.X.Casing shoe          | @ 131.80  | = 131.80        |
| Total charges              |           | <u>5,861.35</u> |

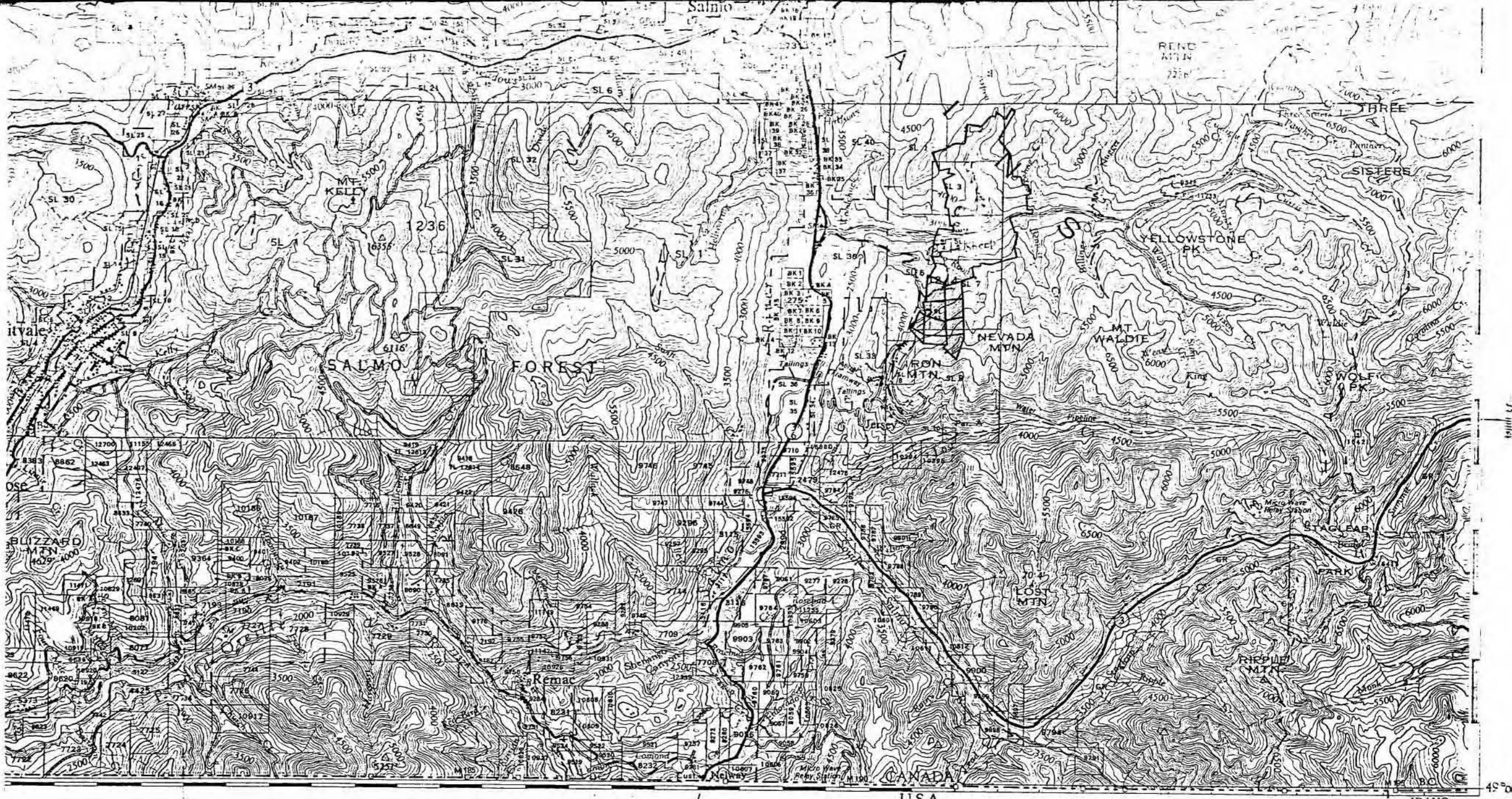
} 1706.25

|       |     |                |       |       |                 |
|-------|-----|----------------|-------|-------|-----------------|
| S-300 | -00 | 0 "            | 174 " | 396 " | 222 "           |
| S-215 | -85 | 0 "            | 0 "   | 141 " | 141 "           |
| S-216 | -30 | 0 "            | 0 "   | 100 " | 100 "           |
|       |     | <u>99 feet</u> |       |       | <u>604 feet</u> |

EXTRA CHARGES

| <u>DATE</u> | <u>MAN HRS</u> | <u>TRUCK HRS.</u> | <u>DRILL MUD</u> | <u>CASING</u>   | <u>DIAMONDS</u>                           |
|-------------|----------------|-------------------|------------------|-----------------|---|
| Oct. 4      | 8 hrs.         | -                 | 4 bags           | -               | -   |
| " .6        | 16 "           | -                 | 3 "              | 110 ft.         | 1 A.X. Shoe                               |
| " .8        | 10 "           | -                 | 7 "              | -               | -   |
| " .9        | -              | -                 | 3 "              | -               | -   |
| " .10       | 12 "           | -                 | 4 "              | -               | -   |
| " .14       | 8 "            | -                 | 4 "              | -               | 1 A.X. Shoe                               |
| " .17       | 2 "            | 2 hrs.            | -                | -               | 1-B.X. Shoe                               |
| " .20       | 24 "           | -                 | -                | -               | 1 A.X. Shoe                               |
| " .21       | 24 "           | -                 | -                | -               | -   |
| " .22       | 24 "           | -                 | -                | -               | -   |
| " .23       | 16 "           | -                 | -                | -               | -   |
|             | <u>144 hrs</u> | <u>2 hrs.</u>     | <u>25 bags</u>   | <u>110 feet</u> | <u>4 A.X. Shoes</u><br><u>1 B.X. Shoe</u> |

SUMMARY  
ON ATTACHED SHEET



To Newport U.S.A. - 75 miles

15'

U.S.A.

IDAHO

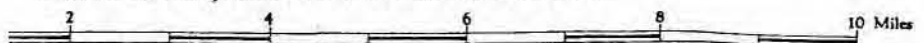
117° 00'

# TRAIL

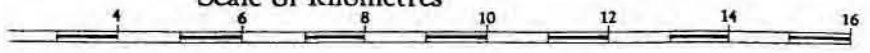
## BRITISH COLUMBIA

# 5689

Scale 1:126,720 or 1 Inch to 2 Miles



Scale of Kilometres



Approximate Magnetic Declination 21° 27' East at centre of map 1971. Decreasing approximately 3' 03" annually.

W. R. YOUNG, CHIEF GEOGRAPHER

Copies of this map may be obtained from Geographic Division, Surveys and Mapping Branch, Department of Lands, Forests, and Water Resources, Victoria, B.C.

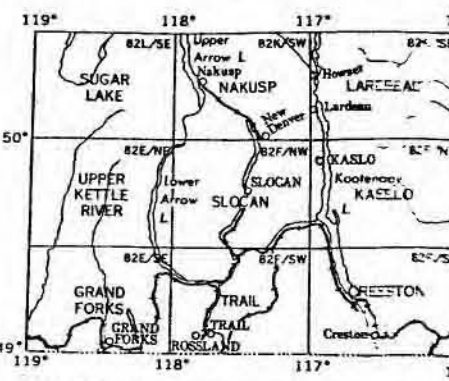
LITHOGRAPHED IN CANADA BY E. M. MACDONALD, QUEEN'S PRINTER, VICTORIA, BRITISH COLUMBIA

# M-1

### REFERENCE

- Road, Hard Surface, All Weather ——— 2 Lanes
- Loose Surface, All Weather ——— 2 Lanes
- Loose Surface, Less than 2 lanes ——— All Weather Dry Weather
- Four Wheel Drive ———
- Trail - - - - -
- Railway ———
- Main Telephone Line ———
- Main Electric Power Line ———
- Horizontal Control Station ———
- Contours (Interval 100 feet) ———
- Elevation in feet above mean sea-level ———
- Intermittent Stream ———
- Intermittent Lake or Seasonal Inundation ———
- Swamp or Marsh ———
- Glacier or Icefield ———
- Spring ———
- Dam ———
- Water Gauge ———
- Water Tank ———
- Saw Mill or Pulp Mill ———
- Gravel Pit ———
- Customs Office ———
- Lighthouse (Occupied) ———
- Abandoned Railway ———
- International Boundary and Monument ———

Universal Transverse Mercator Projection



On the above index, maps published with district lot land status coloured yellow.  
 Land Commissioner's Office is located in Nelson.  
 Mineral Claims are not shown on this sheet.  
 District land lot numbers 24 Sections within Townships 24  
 District land lots, 3 acres or less, may not be shown due to the scale of this map. For detailed information see Departmental Ref. No.

TRUMAN



Department of  
Mines and Petroleum Resources  
ASSESSMENT REPORT  
NO. 5689 MAP 3

ACTIVE



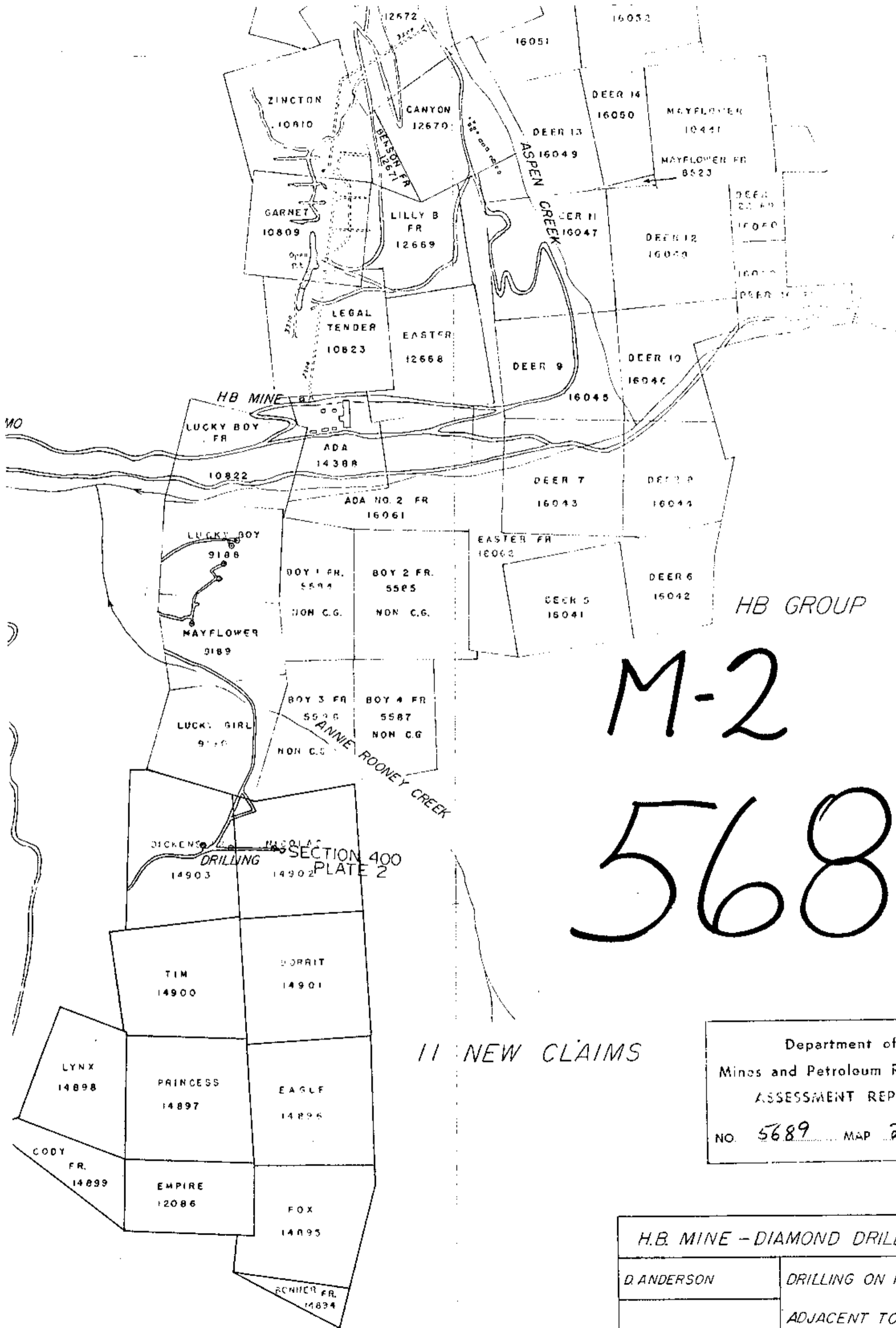
|              |      |            |      |
|--------------|------|------------|------|
| Drawn by: DA |      | Traced by: |      |
| Revised by   | Date | Revised by | Date |
|              |      |            |      |
|              |      |            |      |
|              |      |            |      |
|              |      |            |      |

# DRILLING SECTION 400

Scale: 1" = 300'

Date:

Plate: 2



M-2  
5689

11 NEW CLAIMS

Department of  
 Mines and Petroleum Resources  
 ASSESSMENT REPORT  
 NO. 5689 MAP 2

|                                     |                            |
|-------------------------------------|----------------------------|
| H.B. MINE - DIAMOND DRILLING - 1975 |                            |
| D. ANDERSON                         | DRILLING ON 11 NEW CLAIMS  |
|                                     | ADJACENT TO THE H.B. GROUP |
| SCALE 1" = 1000 FEET                | PLATE 1                    |